

Traffic Calming (Speed Humps) - Stamford Square North and Stamford Square South

Date: October 3, 2025

To: Scarborough Community Council

From: Director, Enforcement and Street Management, Transportation Services

Wards: Ware 20, Scarborough Southwest

SUMMARY

This staff report is about a matter that Community Council has delegated authority from City Council to make a final decision.

Transportation Services is recommending the installation of speed humps on:

- Stamford Square North, between Stamford Square (west intersection) and Stellarton Road; and
- Stamford Square South, between Stamford Square (west intersection) and Stamford Square (east intersection).

Staff's assessment indicates the criteria as set out in the Traffic Calming Policy has been satisfied. Therefore, speed humps should be installed on Stamford Square North and on Stamford Square South.

RECOMMENDATIONS

The Director, Enforcement and Street Management, Transportation Services recommends that:

1. Scarborough Community Council authorize the installation of speed humps on Stamford Square North, between Stamford Square (west intersection) and Stellarton Road.
2. Scarborough Community Council authorize the installation of speed humps on Stamford Square South, between Stamford Square (west intersection) and Stamford Square (east intersection).

3. Scarborough Community Council direct the City Solicitor to prepare a by-law to alter the roadway for the installation of nine speed humps on Stamford Square North, between Stamford Square (west intersection) and Stellarton Road, and on Stamford Square South, between Stamford Square (west intersection) and Stamford Square (east intersection), generally as shown on Attachment 2 and 3, Drawings TC-585 and TC-585-1, dated September 2025, attached to the report entitled "Traffic Calming (Speed Humps) - Stamford Square North and Stamford Square South" from the Director, Enforcement and Street Management, Transportation Services.

FINANCIAL IMPACT

The estimated cost for installing nine speed humps on Stamford Square North and Stamford Square South is \$36,000.00. Funding would be subject to availability and competing priorities within the Transportation Services 2026 Capital Budget.

DECISION HISTORY

This report addresses a new initiative.

COMMENTS

Transportation Services received a request from the Ward Councillor, on behalf of area residents, to investigate the feasibility of installing speed humps on Stamford Square North and Stamford Square South. The residents are concerned that motorists travel at a high rate of speed on both Stamford Square North and Stamford Square South.

Existing Conditions

Stamford Square North and Stamford Square South are characterized by the following conditions:

- They are two-lane, north-south and east-west, local roadways
- They operate two-way traffic on a pavement width of approximately 8.5 metres
- The daily two-way traffic volume is approximately 740 and 340 vehicles, respectively
- The speed limits are 30 km/h
- Heavy trucks are prohibited at all times
- There is no Toronto Transit Commission (TTC) service provided on either street
- There are sidewalks located on both sides of both streets

The land use in the area consists of single-family residential dwellings with Al Abedeen Mosque, located on the west side of Stamford Square South. The subject sections of these streets are not designated as a Community Safety Zone.

A map of the area and proposed locations of the speed humps is included in Attachment 2 and 3.

Study Results

As part of the assessment of the warrant criteria, a vehicle speed and volume study was conducted on Stamford Square North and Stamford Square South from October 1 to 3, 2024.

The study results on Stamford Square North and Stamford Square South disclosed the following:

- 24-hour total vehicle volumes are approximately 740 and 340 vehicles, respectively
- The block lengths are 272 metres and 318 metres, respectively
- The operating speed, which is the speed at which 85 percent of traffic is travelling at or below, were observed at 39 km/h and 45 km/h, respectively
- The 95th percentile speed, which is the speed at which 95 percent of traffic is travelling at or below, were observed at 44 km/h and 47 km/h, respectively

Based on the study results, Stamford Square North and Stamford Square South have satisfied the warrant criteria for both minimum block length and minimum vehicle speed. The block lengths are greater than 120 metres and the operating speeds are 8 km/h over the warranted speed of 30 km/h on both. Additionally, 95th percentile speed on Stamford Square South is 17 km/h over the warranted speed of 30 km/h.

The overall investigation concluded that the eligibility and warrant criteria as outlined in the Traffic Calming Policy has been satisfied. Therefore, staff recommend the installation of speed humps on Stamford Square North and Stamford Square South.

Relative Priority and Other Impacts

In the event that the number of approved requests for roadway traffic calming measures exceed the budget allocated for installation, funding for approved installations will be prioritized using a Prioritization Score. This score is made up of a Quantitative Score and a Qualitative Score.

The Quantitative Score is based on the results of the data collection, including travel speeds and traffic volumes to prioritize locations with higher vehicle speeds and volumes.

The Qualitative Score includes:

- Collision history to prioritize locations with a history of serious injury or fatal collisions and those involving a pedestrian or person cycling
- Equity to prioritize equity-deserving communities with a high-concentration of priority populations and those that are transportation disadvantaged
- Expected presence of vulnerable road users (elderly population, school children and pedestrians, including transit riders) to prioritize locations with a higher risk of fatal and serious injury collisions

The Quantitative and Qualitative Scores are averaged to provide the complete Prioritization Score on Stamford Square North and Stamford Square South, scored 29 ranking points out of a possible 100.

No alterations to parking regulations will be required, nor will the number of parking spaces be affected by the installation of speed humps. Installation of speed humps will have minimal effect on winter services, street cleaning and garbage collection.

Consultation with Emergency Services

Consultation with emergency services (Toronto Police Service, Toronto Fire Services and Toronto Paramedic Services) is required to ensure that the design and layout of a traffic calming proposal does not unduly affect their operations. Emergency services were advised of this proposal.

Comments have not been received back at the time of writing this report from Toronto Police Service and Toronto Fire Services. Toronto Paramedic Services have provided their comments. A copy of their full response is included in Attachment 4. Installing speed humps will result in slower operating speeds for all vehicles, including emergency service vehicles.

The Ward Councillor has been advised of the recommendations in this report.

CONTACT

Dan Clement, CET, Manager Traffic Operations (Area 1), Transportation Services
416-396-3226, Dan.Clement@toronto.ca

SIGNATURE

Mike Barnet, P. Eng.
Director, Enforcement and Street Management, Transportation Services

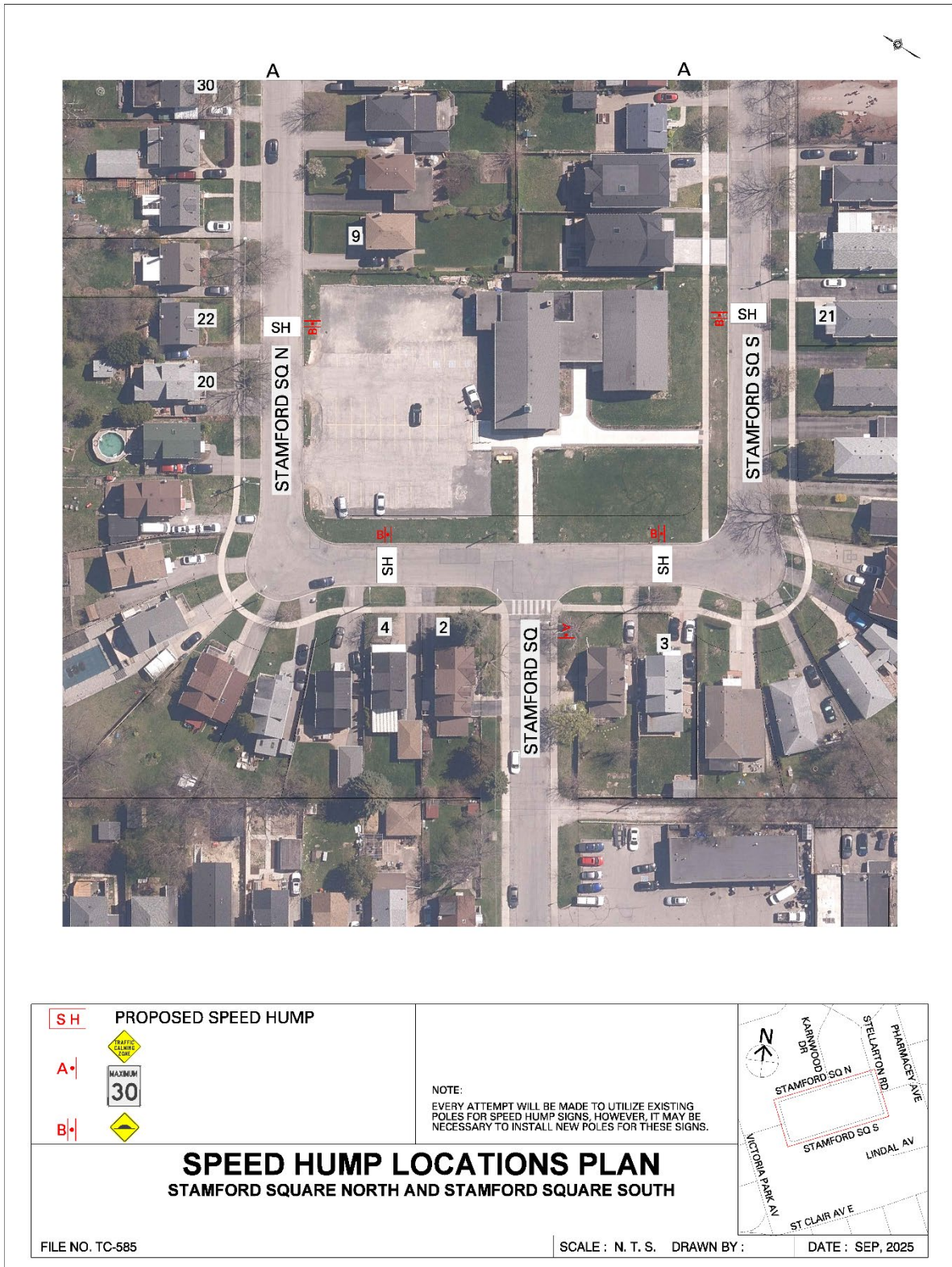
ATTACHMENTS

- Attachment 1: Traffic Calming Warrant - Stamford Square North and Stamford Square South Avenue
- Attachment 2: Speed Hump Locations Plan - Stamford Square Square North and Stamford Square South (Matchline, see drawing TC-585-1)
- Attachment 3: Speed Hump Locations Plan - Stamford Square Square North and Stamford Square South
- Attachment 4: Letter from Toronto Fire Services, dated September 5, 2025

Attachment 1: Traffic Calming Warrant - Stamford Square North and Stamford Square South

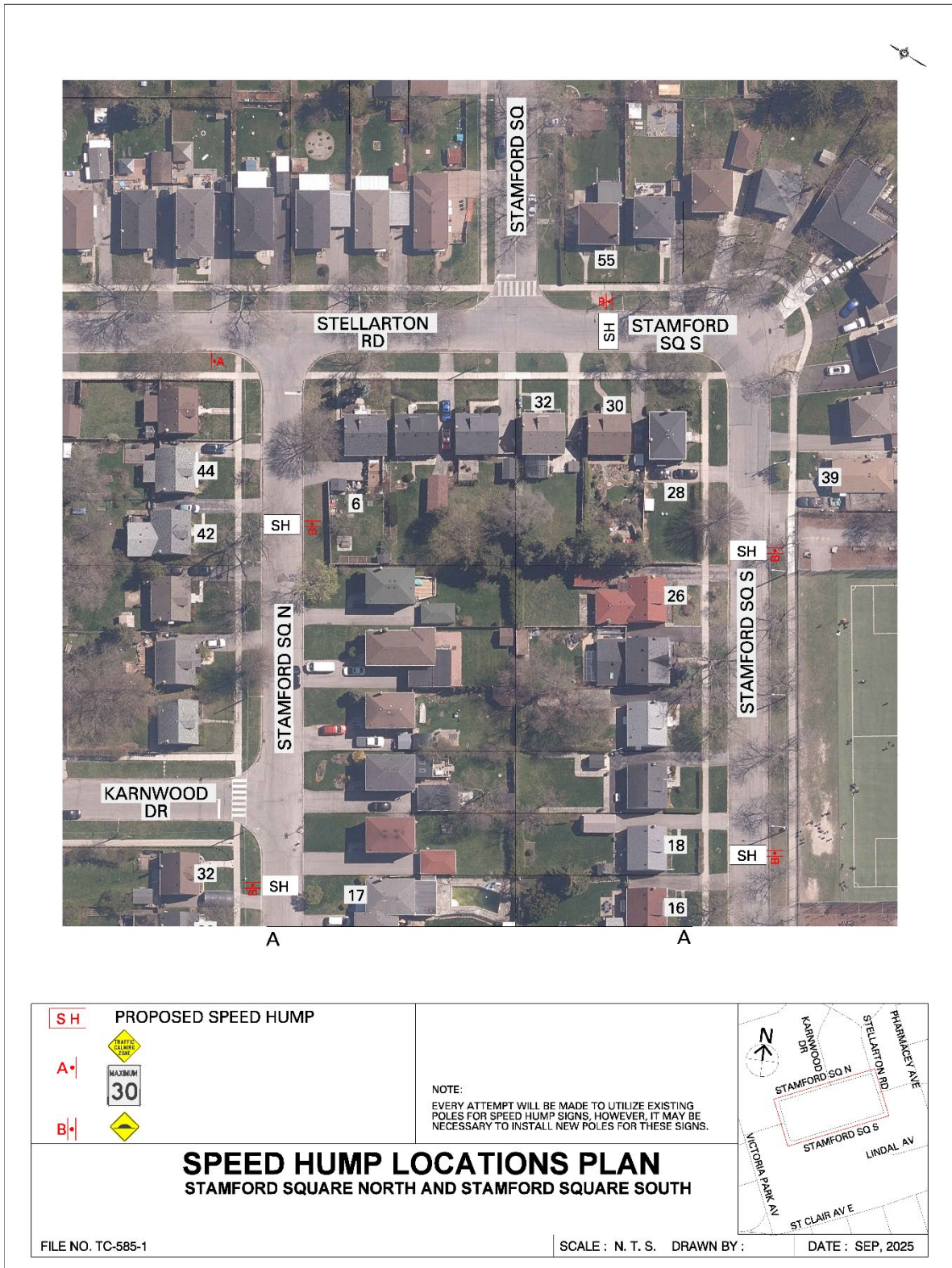
Criteria		Requirement	Warrant Satisfied?
Community Support		A direct request from the Ward Councillor OR identified by Transportation Services in consultation with the Ward Councillor	Yes
Eligibility Criteria	Road Classification	Classified as a local or collector roadway, according to the Toronto Road Classification System	Yes
	Sidewalks	Presence of a sidewalk on at least one side of a local roadway and both sides of a collector roadway is preferred but not required	Yes
	Traffic Volume	Maximum average daily traffic volume of less than 8,000 vehicles per day	Yes
	Road Grade	Maximum roadway grade of up to 5%, can be considered in locations where the road grade is between 5% and 8% with additional review	Yes
	Emergency Services	No significant impacts on emergency services, including Toronto Fire, Paramedic and Police Services	Yes
	Transit Services	No significant impacts to regularly scheduled Toronto Transit Commission (TTC) services	N/A
Warrant Criteria	Minimum Block Length	Minimum block length of 120 metres based on the measured distance from centre to centre of controlled intersections AND	Yes (272 m, 318m)
	85th percentile speed	Minimum 85th percentile speed of 8 km/h over the warranted speed limit OR	Yes (9,15 km/h)
	95th percentile speed	Minimum 95th percentile speed of 15 km/h over the warranted speed limit	Stamford Sq N: No (14 km/h) Stamford Sq S: Yes (17km/h)

Attachment 2: Speed Hump Locations Plan - Stamford Square North and Stamford Square South (Matchline, see drawing TC-585-1)



W:\s-traps01\traps01\PRS\Pedestrian Projects\2-Location Specific Projects\CWP\PLT\SI\PT\TRAFFIC CALMING PROGRAM\Drawing requests Sample\Stamford Square\TC-585 -Stamford Square DGN

Attachment 3: Speed Hump Locations Plan - Stamford Square Square North and Stamford Square South



\\s-trapps01\traps01\PRS\Pedestrian Projects\2-Location Specific\Projects\CWP\PLT\SI\PT\TRAFFIC CALMING PROGR\AM\Drawing requests Sample\Stamford Square\TC-585 -Stamford Square DGN

Attachment 4: Letter from Toronto Fire Services, dated September 5, 2025

Amir Ghanbari

From: EMS Planning
Sent: September 5, 2025 2:02 PM
To: Amir Ghanbari
Cc: Atif Sharif; Brina McMillan; EMS Planning
Subject: RE: Traffic Calming on Stamford Square N and S

Hi Amir,

We have received and reviewed the proposal for installation of speed humps on Stamford Square North and South between Stellarton Road and Stamford Square, with the following comments:

The installation of speed humps on Stamford Square North and South between Stellarton Road and Stamford Square, will impact response and transport times for residents that reside on the roadway speed humps are installed. Impacts may extend to community members if Stamford Square North and South between Stellarton Road and Stamford Square, serves access to other roadways. It is important that the applicant understands that the installation of traffic calming devices will reduce the speed that emergency vehicles travel when responding to emergencies on roadways where they are installed.

Toronto Paramedic Services is supportive of community initiatives that improve the safety of all citizens of, and visitors to, the City of Toronto. Traffic and pedestrian safety are key components of a healthy neighbourhood, and we endeavour to support the wishes of the community to implement measures to improve upon these components.

