

## **Traffic Calming (Speed Humps) - Guild Hall Drive**

**Date:** November 5, 2025

**To:** Scarborough Community Council

**From:** Director, Enforcement and Street Management, Transportation Services

**Wards:** Ward 21, Scarborough Centre

### **SUMMARY**

---

This staff report is about a matter that Community Council has delegated authority from City Council to make a final decision.

Transportation Services is recommending the installation of speed humps on Guild Hall Drive, between Warden Avenue and Ellington Drive. Staff's assessment indicates the criteria as set out in the Traffic Calming Policy has been satisfied. Therefore, speed humps should be installed on Guild Hall Drive.

### **RECOMMENDATIONS**

---

The Director, Enforcement and Street Management, Transportation Services recommends that:

1. Scarborough Community Council authorize the installation of speed humps on Guild Hall Drive, between Warden Avenue and Ellington Drive.
2. Scarborough Community Council direct the City Solicitor to prepare a by-law to alter the roadway for the installation of six speed humps on Guild Hall Drive, between Warden Avenue and Ellington Drive, generally as shown on Attachment 2, Drawing TC-597, dated October 2025, attached to the report entitled "Traffic Calming (Speed Humps) - Guild Hall Drive" from the Director, Enforcement and Street Management, Transportation Services.

## **FINANCIAL IMPACT**

---

The estimated cost for installing six speed humps on Guild Hall Drive is \$24,000.00. Funding is subject to availability and competing priorities within the Transportation Services 2026 Capital Budget.

## **DECISION HISTORY**

---

This report addresses a new initiative.

## **COMMENTS**

---

Transportation Services received a request from the Ward Councillor, on behalf of area residents, to investigate the feasibility of installing speed humps on Guild Hall Drive, between Warden Avenue and Ellington Drive. The residents are concerned that motorists travel at a high rate of speed on Guild Hall Drive.

### **Existing Conditions**

Guild Hall Drive is characterized by the following conditions:

- It is a two-lane, east-west, local roadway
- It operates two-way traffic on a pavement width of 8.5 metres
- The daily two-way traffic volume is approximately 600 vehicles
- The speed limit is 30 km/h
- Heavy trucks are prohibited at all times
- There is no Toronto Transit Commission (TTC) service provided
- There are no sidewalks on either side of the street, except section on the north side between Warden Avenue and a point 50 metres east of Warden Avenue

The land use consists of single-family and multi-family residential dwellings, as well as commercial plaza south of Guild Hall Drive. This subject section of Guild Hall Drive is not within a designated Community Safety Zone.

A map of the area and proposed locations of the speed humps is included in Attachment 2.

### **Study Results**

As part of the assessment of the warrant criteria, a three-day speed and volume study was conducted on Guild Hall Drive from March 4 to 6, 2025.

The study results on Guild Hall Drive disclosed the following:

- 24-hour total vehicle volume is approximately 600 vehicles
- The block length from Warden Avenue to Ellington Drive is 385 metres
- The operating speed, which is the speed at which 85 percent of traffic is travelling at or below, was observed at 44 km/h
- The 95th percentile speed, which is the speed at which 95 percent of traffic is travelling at or below, was observed at 49 km/h

Based on the study results, Guild Hall Drive has satisfied the warrant criteria for both minimum block length and minimum vehicle speed. The block length was greater than 120 metres and the operating speed is 14 km/h over the warranted speed of 30 km/h and the 95th percentile speed is 19 km/h over the warranted speed of 30 km/h.

The overall investigation concluded that the eligibility and warrant criteria as outlined in the Traffic Calming Policy has been satisfied. Therefore, staff recommend the installation of speed humps on Guild Hall Drive.

## **Relative Priority and Other Impacts**

In the event that the number of approved requests for roadway traffic calming measures exceed the budget allocated for installation, funding for approved installations will be prioritized using a Prioritization Score. This score is made up of a Quantitative Score and a Qualitative Score.

The Quantitative Score is based on the results of the data collection, including travel speeds and traffic volumes to prioritize locations with higher vehicle speeds and volumes.

The Qualitative Score includes:

- Collision history to prioritize locations with a history of serious injury or fatal collisions and those involving a pedestrian or person cycling
- Equity to prioritize equity-deserving communities with a high-concentration of priority populations and those that are transportation disadvantaged
- Expected presence of vulnerable road users (elderly population, school children and pedestrians, including transit riders) to prioritize locations with a higher risk of fatal and serious injury collisions

The Quantitative and Qualitative Scores are averaged to provide the complete Prioritization Score. Guild Hall Drive, between Warden Avenue and Ellington Drive, scored 49 ranking points out of a possible 100.

No alterations to parking regulations will be required, nor will the number of parking spaces be affected by the installation of speed humps. Installation of speed humps will have minimal effect on winter services, street cleaning and garbage collection.

## **Consultation with Emergency Services**

Consultation with emergency services (Toronto Police Service, Toronto Fire Services and Toronto Paramedic Services) is required to ensure that the design and layout of a traffic calming proposal does not unduly affect their operations. Emergency services were advised of this proposal.

Toronto Paramedic Services responded and advised of potential delays in emergency responses but expressed support for initiatives that enhance community safety. A copy of their full response is included in Attachment 3. Toronto Fire Services and Toronto Police Service has not provided comments back at the time of writing this report. Installing speed humps will result in slower operating speeds for all vehicles, including emergency service vehicles.

The Ward Councillor has been advised of the recommendations in this report.

## **CONTACT**

---

Dan Clement, CET, Manager Traffic Operations (Area 1), Transportation Services  
416-396-3226, [Dan.Clement@toronto.ca](mailto:Dan.Clement@toronto.ca)

## **SIGNATURE**

---

Mike Barnet, P. Eng.  
Director, Enforcement and Street Management, Transportation Services

## **ATTACHMENTS**

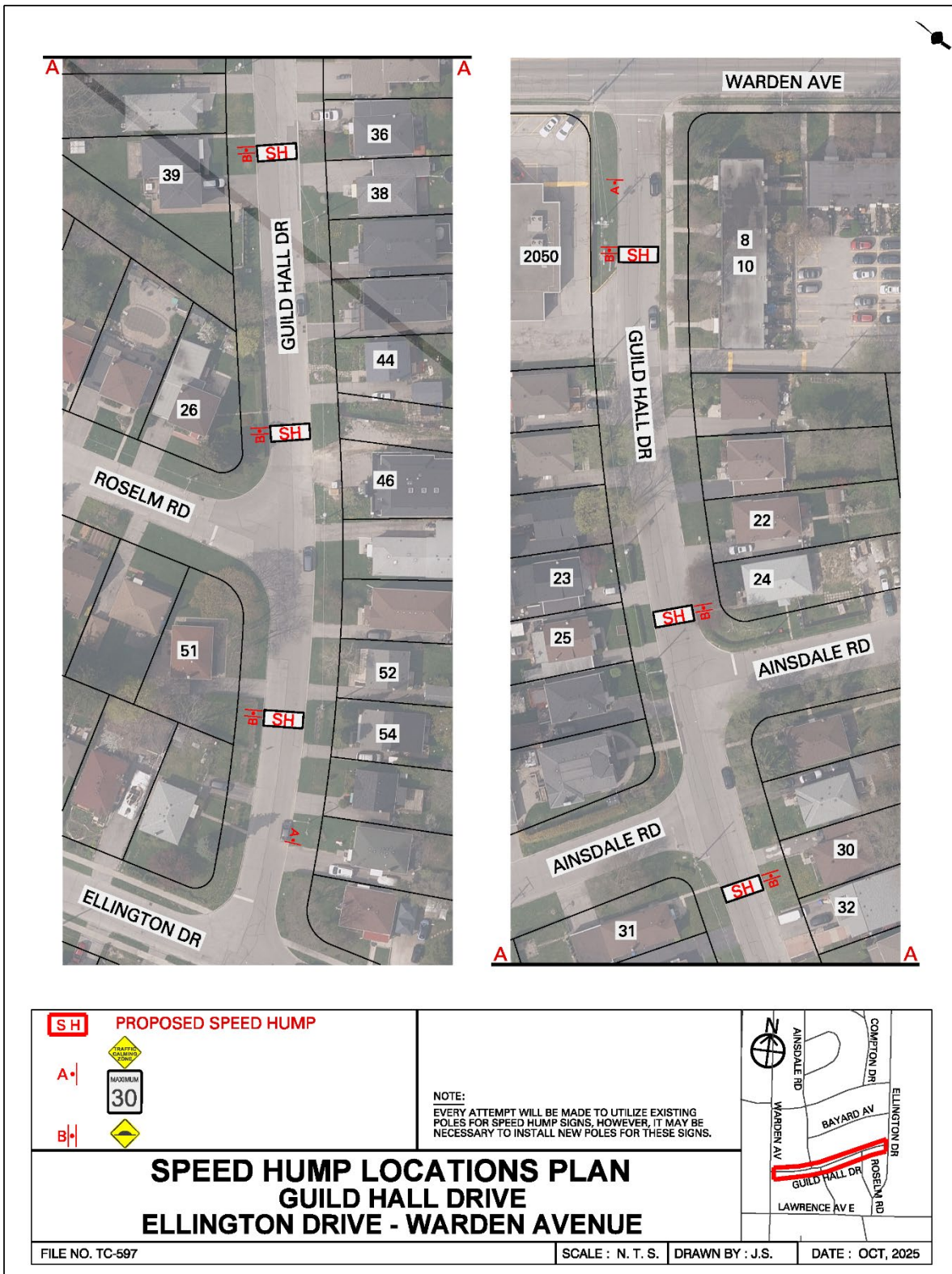
---

- Attachment 1: Traffic Calming Warrant - Guild Hall Drive, between Ellington Drive and Warden Avenue
- Attachment 2: Speed Hump Locations Plan - Guild Hall Drive, Ellington Drive - Warden Avenue
- Attachment 3: Letter from Toronto Paramedic Services, dated October 22, 2025

Attachment 1: Traffic Calming Warrant - Guild Hall Drive, between Ellington Drive and Warden Avenue

Criteria		Requirement	Warrant Satisfied?
Community Support		A direct request from the Ward Councillor OR identified by Transportation Services in consultation with the Ward Councillor	Yes
Eligibility Criteria	Road Classification	Classified as a local or collector roadway, according to the Toronto Road Classification System	Yes
	Sidewalks	Presence of a sidewalk on at least one side of a local roadway and both sides of a collector roadway is preferred but not required	No
	Traffic Volume	Maximum average daily traffic volume of less than 8,000 vehicles per day	Yes
	Road Grade	Maximum roadway grade of up to 5%, can be considered in locations where the road grade is between 5% and 8% with additional review	Yes
	Emergency Services	No significant impacts on emergency services, including Toronto Fire, Paramedic and Police Services	Yes
	Transit Services	No significant impacts to regularly scheduled Toronto Transit Commission (TTC) services	N/A
Warrant Criteria	Minimum Block Length	Minimum block length of 120 metres based on the measured distance from centre to centre of controlled intersections AND	Yes (385 m)
	85th percentile speed	Minimum 85th percentile speed of 8 km/h over the warranted speed limit OR	Yes (14 km/h)
	95th percentile speed	Minimum 95th percentile speed of 15 km/h over the warranted speed limit	Yes (19 km/h)

Attachment 2: Speed Hump Locations Plan - Guild Hall Drive, Ellington Drive - Warden Avenue



## Attachment 3: Letter from Toronto Paramedic Services, dated October 22, 2025

---

**From:** EMS Planning <emsplanning@toronto.ca>  
**Sent:** October 22, 2025 9:22 AM  
**To:** Alena Suslina <Alena.Suslina@toronto.ca>  
**Cc:** Atif Sharif <Atif.Sharif@toronto.ca>; EMS Planning <emsplanning@toronto.ca>  
**Subject:** RE: Speed Humps - Guild Hall Drive between Warden Avenue and Ellington Drive

Hi Alena,

We have received and reviewed the proposal for installation of speed humps on Guild Hall Drive between Warden Avenue and Ellington Drive, with the following comments:

The installation of speed humps on Guild Hall Drive between Warden Avenue and Ellington Drive, will impact response and transport times for residents that reside on the roadway speed humps are installed. Impacts may extend to community members if Guild Hall Drive between Warden Avenue and Ellington Drive, serves access to other roadways. It is important that the applicant understands that the installation of traffic calming devices will reduce the speed that emergency vehicles travel when responding to emergencies on roadways where they are installed.

Toronto Paramedic Services is supportive of community initiatives that improve the safety of all citizens of, and visitors to, the City of Toronto. Traffic and pedestrian safety are key components of a healthy neighbourhood, and we endeavour to support the wishes of the community to implement measures to improve upon these components.

