



SH PROPOSED TWO-WAY SPEED HUMP



A



B



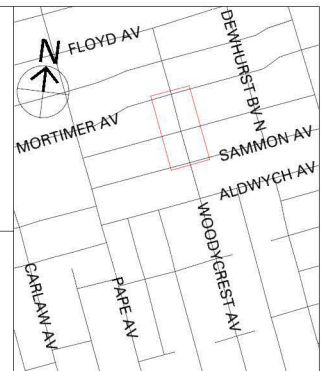
DISCLAIMER:

THIS DRAWING WAS PREPARED UPON REQUEST FROM THE WARD COUNCILLOR

* PLACEMENT OF THIS SPEED HUMP DOES NOT COMPLY WITH THE CITY OF TORONTO'S TRAFFIC CALMING POLICY.

NOTE:

EVERY ATTEMPT WILL BE MADE TO UTILIZE EXISTING POLES FOR SPEED HUMP SIGNS, HOWEVER, IT MAY BE NECESSARY TO INSTALL NEW POLES FOR THESE SIGNS.



SPEED HUMP LOCATIONS PLAN WOODYCREST AVENUE STREET: SAMMON AVE - MORTIMER AVE