

Traffic Calming (Speed Humps) - Rathnelly Avenue, between Macpherson Avenue and Poplar Plains Crescent

Date: May 20, 2025

To: Toronto and East York Community Council

From: Director, Traffic Management, Transportation Services

Wards: Ward 12, Toronto-St. Paul's

SUMMARY

This staff report is about a matter that Community Council has delegated authority from City Council to make a final decision.

Transportation Services has reviewed the need for speed humps on Rathnelly Avenue, between Macpherson Avenue and Poplar Plains Crescent. The assessment indicates the warrant criteria as set out in the updated Traffic Calming Policy has not been satisfied. Therefore, staff do not recommend the installation of speed humps on Rathnelly Avenue.

RECOMMENDATIONS

The Director, Traffic Management, Transportation Services recommends that:

1. Toronto and East York Community Council not authorize the installation of speed humps on Rathnelly Avenue, between Macpherson Avenue and Poplar Plains Crescent.

FINANCIAL IMPACT

There are no financial impacts resulting from the adoption of the recommendation in this report.

If Toronto and East York Community Council amends the recommendation in this report and authorizes the installation of speed humps on Rathnelly Avenue, the estimated cost of installing five speed humps is \$20,000.00. Funding would be subject to availability and competing priorities within the Transportation Services 2025 Capital Budget.

DECISION HISTORY

This report addresses a new initiative.

COMMENTS

Transportation Services received a request from the Ward Councillor, on behalf of area residents, to investigate the feasibility of installing speed humps on Rathnelly Avenue, between Macpherson Avenue and Poplar Plains Crescent. The residents are concerned that motorists travel at a high rate of speed on Rathnelly Avenue.

Existing Conditions

Rathnelly Avenue is characterized by the following conditions:

- It is a two-lane, north-south, local roadway
- It operates two-way traffic on a pavement width of approximately 6.4 metres
- The daily two-way traffic volume is approximately 600 vehicles
- The speed limit is 30 km/h
- Heavy trucks are prohibited at all times
- There is no Toronto Transit Commission (TTC) service provided
- There are sidewalks located on both sides of the street

The land use in this area primarily consists of residential, with general employment areas to the south of Rathnelly Avenue and Macpherson Avenue. This subject section of Rathnelly Avenue is not within a designated Community Safety Zone.

A map of the area and locations of the requested speed humps is included in Attachment 2.

Study Results

In order for speed humps to be recommended on a street, the eligibility and warrant criteria as set out in the City of Toronto's updated Traffic Calming Policy must be satisfied. The eligibility criteria include the road classification, the presence of sidewalks, maximum traffic volume, the road grade and the impacts to emergency services and transit. The warrant criteria include the block length and the operating speeds. Details of the eligibility and warrant criteria are included in Attachment 1.

As part of the assessment of the warrant criteria, a vehicle speed/volume study was conducted on Rathnelly Avenue from June 25 to June 27, 2024.

The study results on Rathnelly Avenue disclosed the following:

- 24-hour total vehicle volume is approximately 580 vehicles
- The block length from Macpherson Avenue to McMaster Avenue is 120 metres, from McMaster Avenue to Cottingham Street is 105 metres and from Cottingham Street to Poplar Plains Crescent is 65 metres
- The operating speed, which is the speed at which 85 percent of traffic is travelling at or below, was observed at 34 km/h
- The 95th percentile speed, which is the speed at which 95 percent of traffic is travelling at or below, was observed at 38 km/h

Based on the study results, the overall warrant for traffic calming was not met for the following reasons:

- Minimum block length: The block length from McMaster Avenue to Cottingham Street is 105 metres, 15 metres under the minimum required length of 120 metres. The block length from Cottingham Street to Poplar Plains Crescent is 65 metres, 55 metres under the minimum required length of 120 metres.
- Minimum speed: The operating speed must be a minimum of 8 km/h over the warranted speed limit. The operating speed of 34 km/h is 4 km/h under the minimum required speed of 38 km/h. The 95th percentile speed must be a minimum of 15 km/h over the warranted speed limit. The 95th percentile speed of 38 km/h is 7 km/h under the minimum required speed of 45 km/h.

The overall investigation concluded that the eligibility and warrant criteria as outlined in the updated Traffic Calming Policy has not been satisfied. Therefore, staff do not recommend the installation of speed humps on Rathnelly Avenue.

Alternate Recommendations

If, despite the findings above, Toronto and East York Community Council decides to proceed with installing speed humps on Rathnelly Avenue, between Macpherson Avenue and Poplar Plains Crescent, it may approve the following:

1. Toronto and East York Community Council authorize the installation of speed humps on Rathnelly Avenue, between Macpherson Avenue and Poplar Plains Crescent.
2. Toronto and East York Community Council direct the City Solicitor to prepare a by-law to alter the roadway for the installation of five speed humps on Rathnelly Avenue, between Macpherson Avenue and Poplar Plains Crescent, generally as shown on Attachment 2, Drawing TC-524, dated April, 2025, attached to the report titled "Traffic Calming (Speed Humps) - Rathnelly Avenue" from the Director, Traffic Management, Transportation Services.

The estimated cost for installing five speed humps on Rathnelly Avenue is \$20,000.00. The installation of speed humps on Rathnelly Avenue would be subject to availability in Transportation Services 2025 Capital Budget and competing priorities.

Relative Priority and Other Impacts

In the event that the number of approved requests for roadway traffic calming measures (speed humps) exceed the budget allocated for installation, funding for approved installations will be prioritized using a Prioritization Score. This score is made up of a Quantitative Score and a Qualitative Score.

The Quantitative Score is based on the results of the data collection, including travel speeds and traffic volumes to prioritize locations with higher vehicle speeds and volumes.

The Qualitative Score includes:

- Collision history to prioritize locations with a history of serious injury or fatal collisions and those involving a pedestrian or cyclist
- Equity to prioritize equity-deserving communities with a high-concentration of priority populations and those that are transportation disadvantaged
- Expected presence of vulnerable road users (elderly population, school children and pedestrians, including transit riders) to prioritize locations with a higher risk of fatal and serious injury collisions

The Quantitative and Qualitative Scores are averaged to provide the complete Prioritization Score. Rathnelly Avenue, between Macpherson Avenue and Poplar Plains Crescent, scored 6 ranking points out of a possible 100.

No alterations to parking regulations would be required, nor will the number of parking spaces be affected by the installation of speed humps. Installation of speed humps will have minimal effect on winter services, street cleaning and garbage collection.

Consultation with emergency services (Toronto Police Service, Toronto Fire Services and Toronto Paramedic Services) is required to ensure that the design and layout of a traffic calming proposal does not unduly affect their operations. Emergency services were advised of this proposal.

Toronto Paramedic Services responded and advised of potential delays in emergency responses but expressed support for initiatives that enhance community safety. A copy of their full response is included in Attachment 3. Toronto Fire Services and Toronto Police Service have not provided comments back at the time of writing this report. Installing speed humps will result in slower operating speeds for all vehicles, including emergency service vehicles.

The Ward Councillor has been advised of the recommendation in this report.

CONTACT

Dan Clement, CET, Manager Traffic Operations (Area 1), Transportation Services
416-397-5021, Dan.Clement@toronto.ca

SIGNATURE



for

Roger Browne, M.A.Sc., P. Eng.
Director, Traffic Management, Transportation Services

ATTACHMENTS

Attachment 1: Traffic Calming Warrant - Rathnelly Avenue

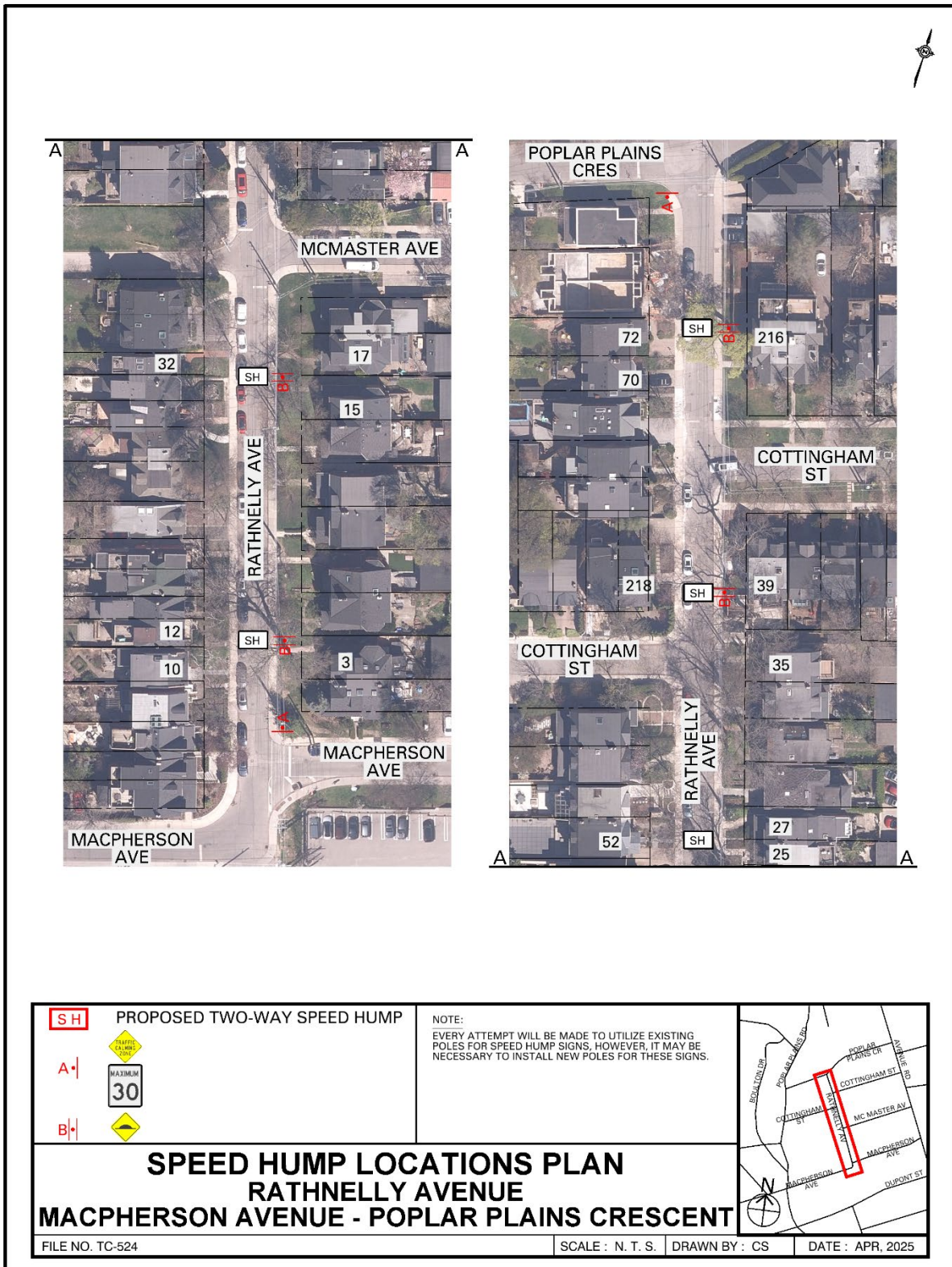
Attachment 2: Speed Hump Locations Plan - Rathnelly Avenue, Macpherson Avenue -
Poplar Plains Crescent

Attachment 3: Letter from Toronto Paramedic Services, dated February 28, 2025

Attachment 1: Traffic Calming Warrant - Rathnelly Avenue

Criteria		Requirement	Warrant Satisfied?
Community Support		A direct request from the Ward Councillor OR identified by Transportation Services in consultation with the Ward Councillor	Yes
Eligibility Criteria	Road Classification	Classified as a local or collector roadway, according to the Toronto Road Classification System	Yes
	Sidewalks	Presence of a sidewalk on at least one side of a local roadway and both sides of a collector roadway is preferred but not required	Yes
	Traffic Volume	Maximum average daily traffic volume of less than 8,000 vehicles per day	Yes
	Road Grade	Maximum roadway grade of up to 5%, can be considered in locations where the road grade is between 5% and 8% with additional review	Yes
	Emergency Services	No significant impacts on emergency services, including Toronto Fire, Paramedic and Police Services	Yes
	Transit Services	No significant impacts to regularly scheduled Toronto Transit Commission (TTC) services	N/A
Warrant Criteria	Minimum Block Length	Minimum block length of 120 metres based on the measured distance from centre to centre of controlled intersections AND	No (McMaster Avenue to Cottingham Street is 105 metres and Cottingham Street to Poplar Plains Crescent is 65 metres)
	85th percentile speed	Minimum 85th percentile speed of 8 km/h over the warranted speed limit OR	No (34 km/h)
	95th percentile speed	Minimum 95th percentile speed of 15 km/h over the warranted speed limit	No (38 km/h)

Attachment 2: Speed Hump Locations Plan - Rathnelly Avenue, Macpherson Avenue - Poplar Plains Crescent



Attachment 3: Letter from Toronto Paramedic Services, dated February 28, 2025

From: EMS Planning <emsplanning@toronto.ca>

Sent: February 28, 2025 8:27 AM

To: Rick Bartel <Rick.Bartel@toronto.ca>

Cc: Jennifer Chung <Jennifer.Chung@toronto.ca>; Atif Sharif <Atif.Sharif@toronto.ca>; EMS Planning <emsplanning@toronto.ca>; EMS Planning <emsplanning@toronto.ca>

Subject: RE: Traffic Calming - Rathnelly Avenue, between Macpherson Avenue and Poplar Plains Crescent

We have received and reviewed the proposal for installation of speed humps on Rathnelly Avenue, between Macpherson Avenue and Poplar Plains Crescent, with the following comments:

The installation of speed humps on Rathnelly Avenue, between Macpherson Avenue and Poplar Plains Crescent, will impact response and transport times for residents that reside on the roadway speed humps are installed. Impacts may extend to community members if Rathnelly Avenue, between Macpherson Avenue and Poplar Plains Crescent, serves access to other roadways. It is important that the applicant understands that the installation of traffic calming devices will reduce the speed that emergency vehicles travel when responding to emergencies on roadways where they are installed.

Toronto Paramedic Services is supportive of community initiatives that improve the safety of all citizens of, and visitors to, the City of Toronto. Traffic and pedestrian safety are key components of a healthy neighbourhood, and we endeavour to support the wishes of the community to implement measures to improve upon these components.

