

Toronto Hydro-Electric System Limited Telephone:  
14 Carlton Street Facsimile:  
Toronto, Ontario M5B 1K5 torontohydro.com



Re: Critical Investments in Streetlight Infrastructure for Public Safety

Dear Members of Toronto City Council,

In response to the request from the Executive Committee, Toronto Hydro is pleased to submit the attached communication. The package includes sample comparisons of LED and conventional lighting across various roadway types, as well as a map illustrating the locations of LED fixtures across the city installed through both reactive replacements and capital investments.

Sincerely  
Dan Smart

A handwritten signature in black ink that reads "Dan Smart". The signature is written in a cursive style with a prominent "D" and "S".

Interim Chief Operating Officer  
Toronto Hydro

# LED STREETLIGHT SAMPLE COMPARISON

April 21, 2026



# LETTER FROM THE INTERIM CHIEF OPERATING OFFICER

Re: EX 30.1 Critical Investments in Streetlight Infrastructure for Public Safety

Dear Members of Toronto City Council,

In response to the request from the Executive Committee, Toronto Hydro is pleased to submit the attached communication. The package includes sample comparisons of LED and conventional lighting across various roadway types, as well as a map illustrating the locations of LED fixtures across the city installed through both reactive replacements and capital investments.

Sincerely,  
Dan Smart

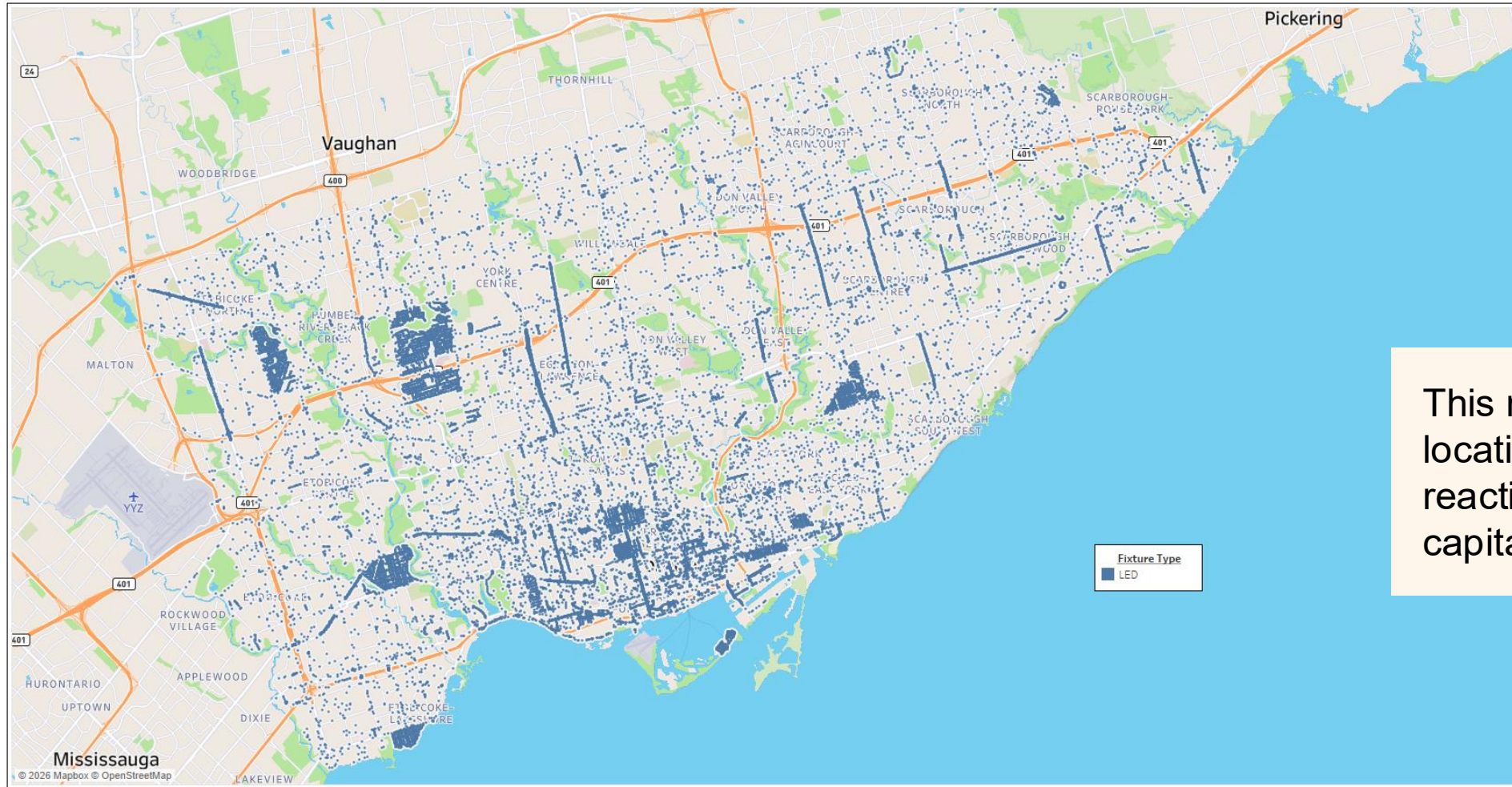
A handwritten signature in black ink that reads "Dan Smart". The signature is written in a cursive style with a long horizontal stroke at the end.

Interim Chief Operating Officer  
Toronto Hydro

# TABLE OF CONTENTS

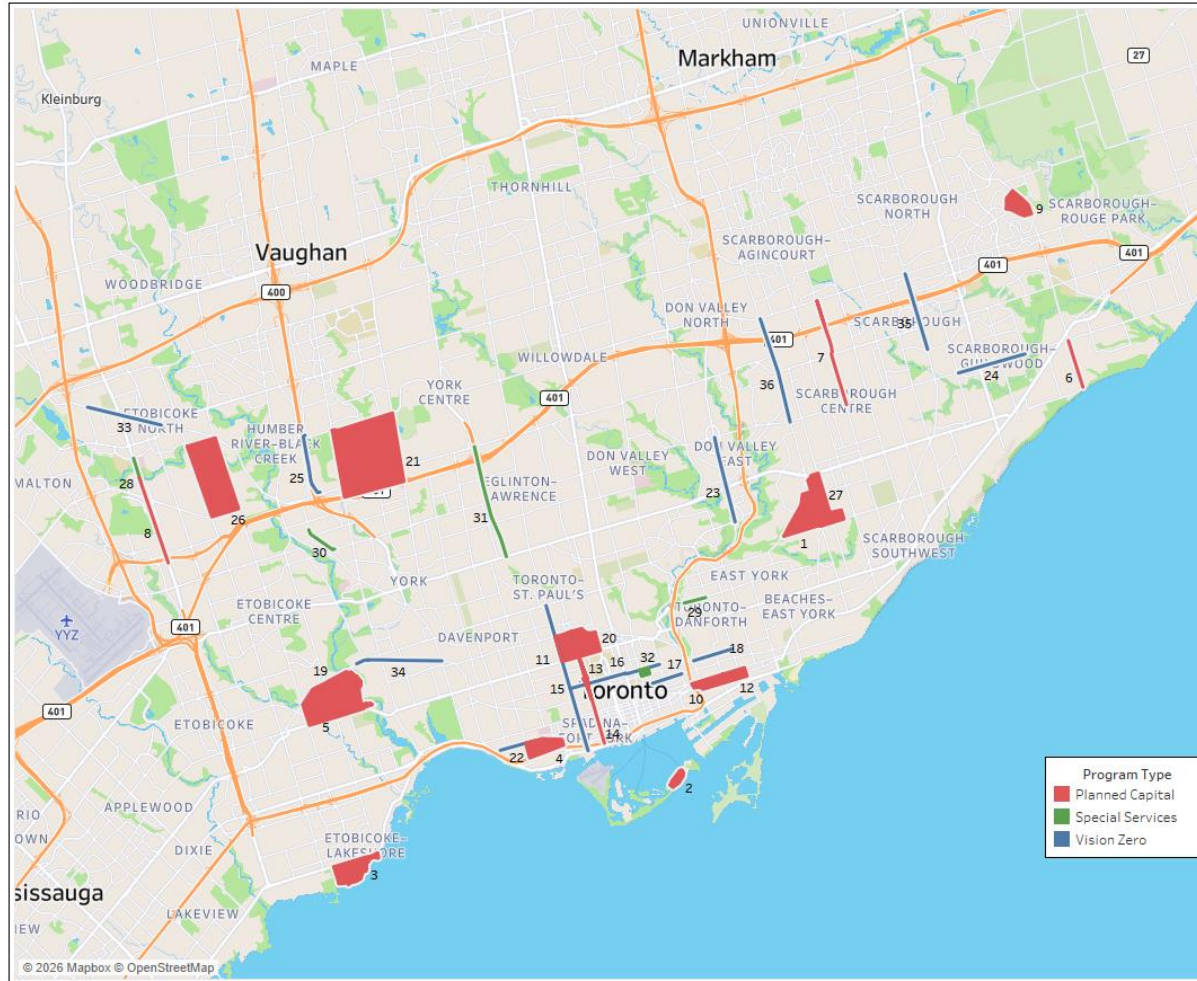
|    |                                 |
|----|---------------------------------|
| 1. | LED locations                   |
| 2. | Types of luminaires             |
| 3. | Major arterial roadway examples |
| 4. | Residential examples            |
| 5. | Acorn examples                  |
| 6. | Laneway examples                |

# LED LUMINAIRE LOCATIONS



This map shows all LED locations — installed reactively or through capital projects.

# CAPITAL PROJECT LOCATIONS WITH LED LUMINAIRES

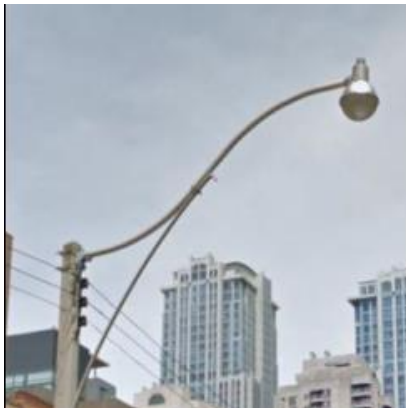


| Project # | Type of Project  | Year | # of LED Installed |
|-----------|------------------|------|--------------------|
| 1         | Planned Capital  | 2020 | 442                |
| 2         | Planned Capital  | 2020 | 158                |
| 3         | Planned Capital  | 2020 | 314                |
| 4         | Planned Capital  | 2021 | 164                |
| 5         | Planned Capital  | 2021 | 816                |
| 6         | Planned Capital  | 2021 | 84                 |
| 7         | Planned Capital  | 2021 | 206                |
| 8         | Planned Capital  | 2021 | 175                |
| 9         | Planned Capital  | 2022 | 117                |
| 10        | Planned Capital  | 2022 | 120                |
| 11        | Planned Capital  | 2022 | 231                |
| 12        | Planned Capital  | 2022 | 173                |
| 13        | Planned Capital  | 2022 | 178                |
| 14        | Planned Capital  | 2022 | 173                |
| 15        | Vision Zero      | 2022 | 8                  |
| 16        | Vision Zero      | 2022 | 4                  |
| 17        | Vision Zero      | 2022 | 107                |
| 18        | Vision Zero      | 2022 | 2                  |
| 19        | Planned Capital  | 2023 | 14                 |
| 20        | Planned Capital  | 2023 | 260                |
| 21        | Planned Capital  | 2023 | 1,427              |
| 22        | Vision Zero      | 2023 | 46                 |
| 23        | Vision Zero      | 2023 | 165                |
| 24        | Vision Zero      | 2023 | 241                |
| 25        | Vision Zero      | 2023 | 68                 |
| 26        | Planned Capital  | 2024 | 814                |
| 27        | Planned Capital  | 2024 | 251                |
| 28        | Special Services | 2024 | 21                 |
| 29        | Special Services | 2024 | 31                 |
| 30        | Special Services | 2024 | 40                 |
| 31        | Special Services | 2024 | 349                |
| 32        | Special Services | 2024 | 92                 |
| 33        | Vision Zero      | 2024 | 161                |
| 34        | Vision Zero      | 2024 | 176                |
| 35        | Vision Zero      | 2024 | 127                |
| 36        | Vision Zero      | 2024 | 222                |

This map specifically indicates areas where we installed LEDs as part of a capital project.

# TYPES OF LUMINAIRES

The streetlight asset base in the city of Toronto is **one of the largest in North America** and includes over **173,100 luminaires** that are predominantly either **conventional cobra head luminaires (109,900)**, **acorn luminaires (36,500)** or **LED luminaires (15,900)**.



*Conventional acorn (metal halide) luminaires are the predominant fixture in the downtown core*



*Conventional cobra head (high-pressure sodium) luminaires are the predominant fixture in the horseshoe*



*LED replacements for acorn (top) cobra head (bottom) luminaires*

# MAJOR ARTERIAL ROADWAY EXAMPLES

Lawrence & Brimley



*LED: Lawrence Avenue East (between Brimley Road & Orton Park Road)*



*Conventional high-pressure sodium cobra head: Lawrence Avenue East (between Brimley Road & Birchmount Road)*

# MAJOR ARTERIAL ROADWAY EXAMPLES

Kennedy & Eglinton



*LED: Kennedy Road (between Eglinton & St. Clair)*



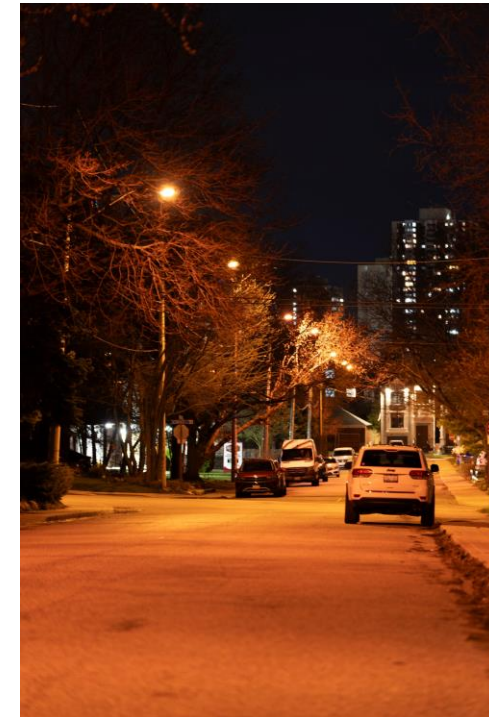
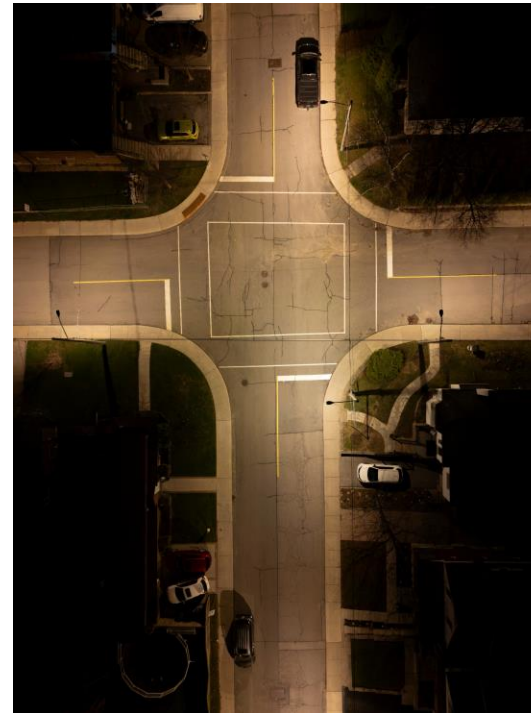
*Conventional high-pressure sodium cobra head: Kennedy Road (between Eglinton & Lawrence)*

# RESIDENTIAL STREET EXAMPLES

Glenburn & St. Clair East



*Street LED: Glenburn Avenue (north of St. Clair Avenue East to Holland Avenue)*



*Conventional high-pressure sodium cobra head: Glenburn Avenue (south of St. Clair Avenue East to Ferris Road)*

# RESIDENTIAL STREET EXAMPLES

Victoria Park & St. Clair East



*LED: Delwood Drive*



*Conventional high-pressure sodium cobra head:  
Pitt Avenue*

# RESIDENTIAL STREET EXAMPLES

Pape & Mortimer/Fulton

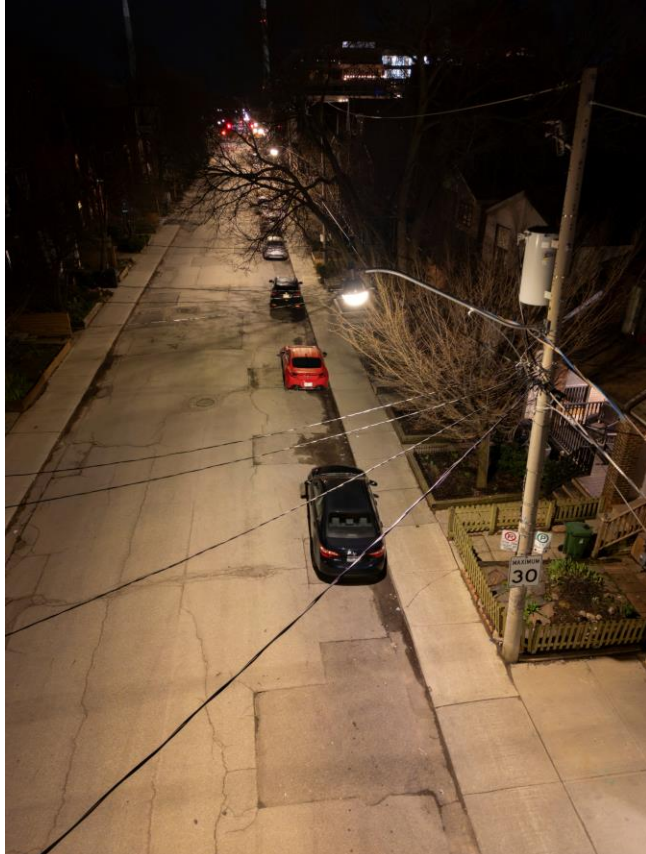


*LED: Mortimer Avenue (between Broadview & Pape)*

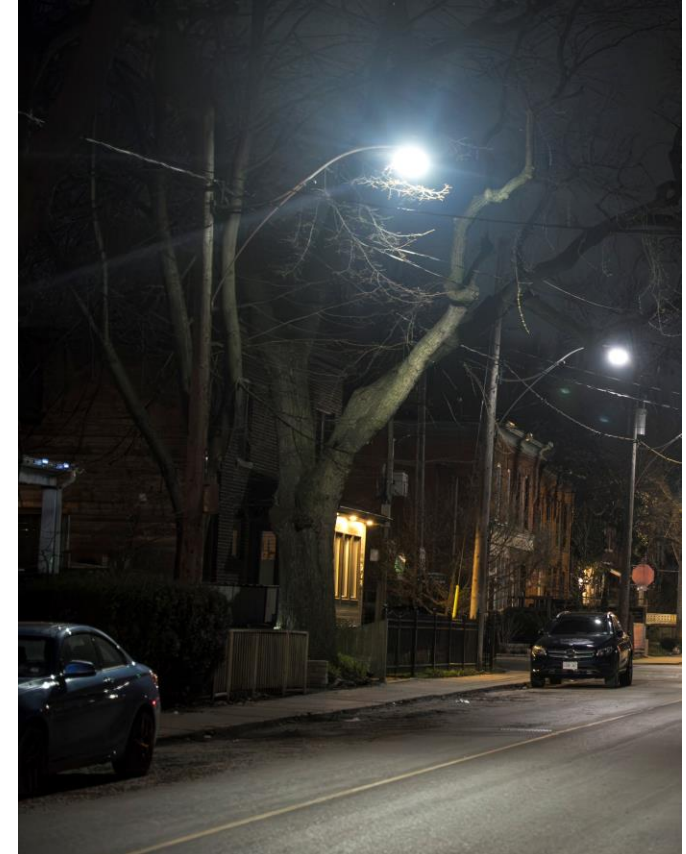


*Conventional high-pressure sodium cobra head:  
Fulton Drive (between Broadview & Pape)*

# RESIDENTIAL STREET EXAMPLES: ACORN LUMINAIRES



*LED: Logan Avenue (south of Queen)*



*Conventional metal halide acorn:  
Logan Avenue (north of Queen)*

\* Minimal visual difference as LED and conventional acorn fixtures look the same with a small variation in colour temperature (3,000 vs 4,000 Kelvins).

# LANEWAY EXAMPLES

Eastern & Queen/Leslie



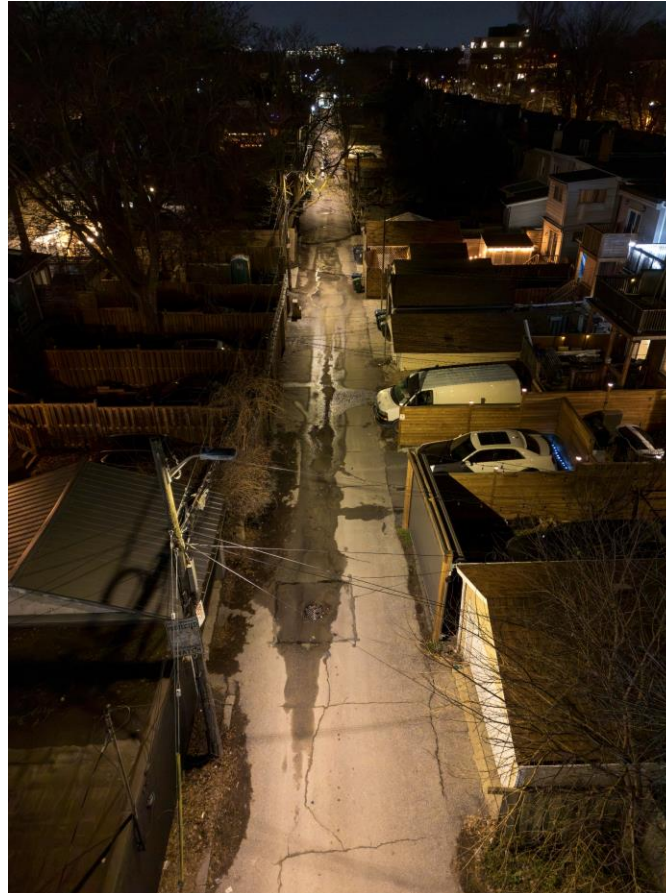
*LED: Caroline & Eastern neighbourhood*



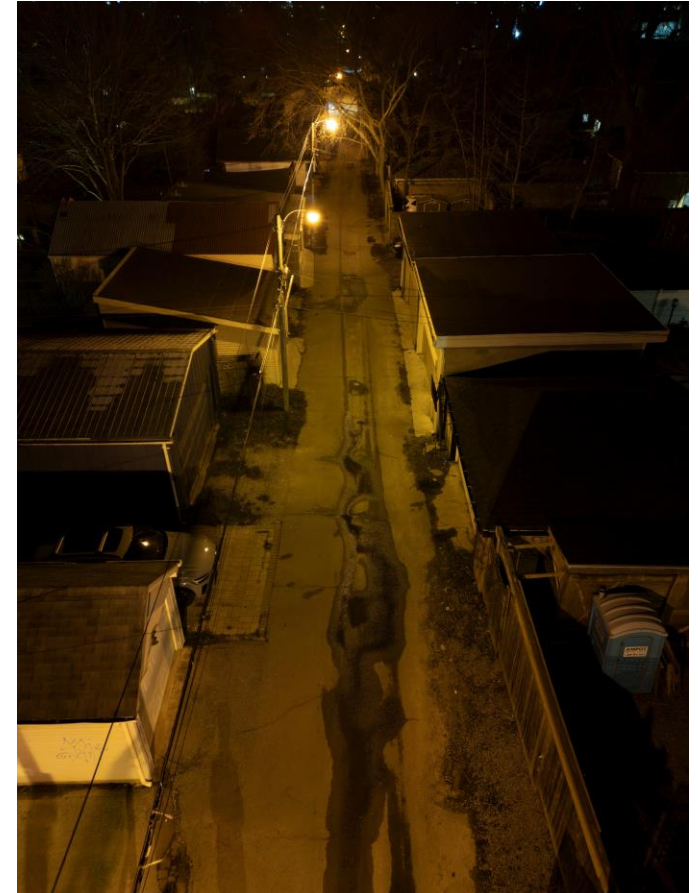
*Conventional high-pressure sodium cobra head:  
Leslie & Queen neighbourhood*

# LANEWAY EXAMPLES

Eastern & Queen/Leslie



*LED: Caroline & Eastern  
neighbourhood*



*Conventional: Leslie & Queen  
neighbourhood*