

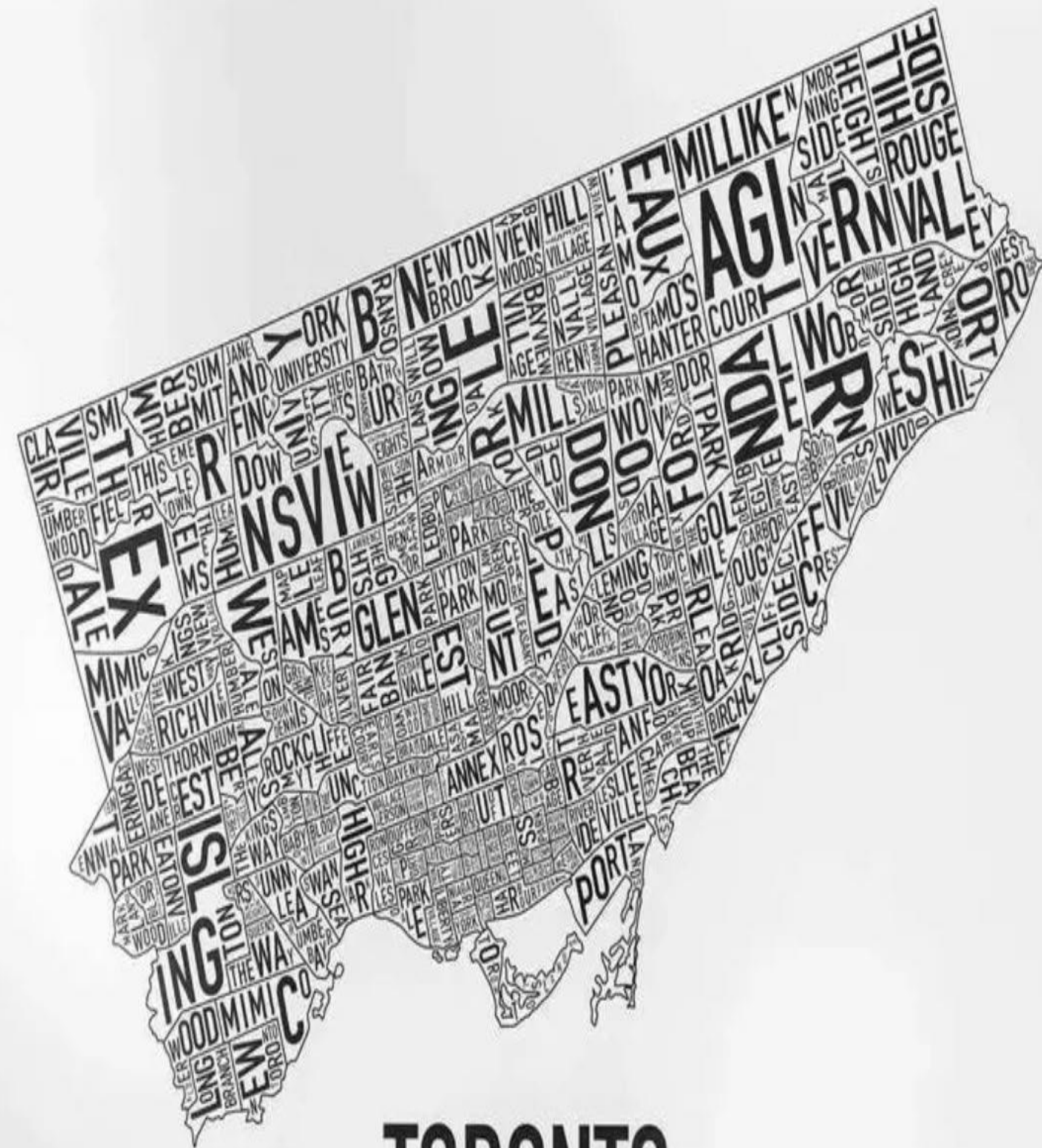
Advancing Community Development through Evidence-Based Planning

Presentation to the
Confronting Anti-Black Racism Action Committee
March 23, 2026

Agenda

This presentation includes the following items:

- The Toronto Strong Neighbourhoods Strategy
- Social and Community Development Plans
- Building Toronto's New Tools for Assessing Neighbourhoods



Toronto Strong Neighbourhoods Strategy

- A place-based equity strategy
- Approved by Council in 2005
- Updated by Council in 2014
- Mission: Activating people, resources, and neighbourhood-friendly policies
- Vision: Equitable opportunities for Torontonians

TSNS Timeline



2005

- 13 Priority Neighbourhoods
- Neighbourhood Action Team/Neighbourhood Action Partnerships
- Service Fairs and Youth Employment Events
- Partnership Opportunities Legacy Fund



2014

- 31 Neighbourhood Improvement Areas
- 8 Emerging Neighbourhoods
- Neighbourhood Planning Tables
- Neighbourhood Grants (Local Leadership Grants)
- TSNS Summit
- Resident Advisory
- Capacity building workshops & Certifications



2020 AND BEYOND

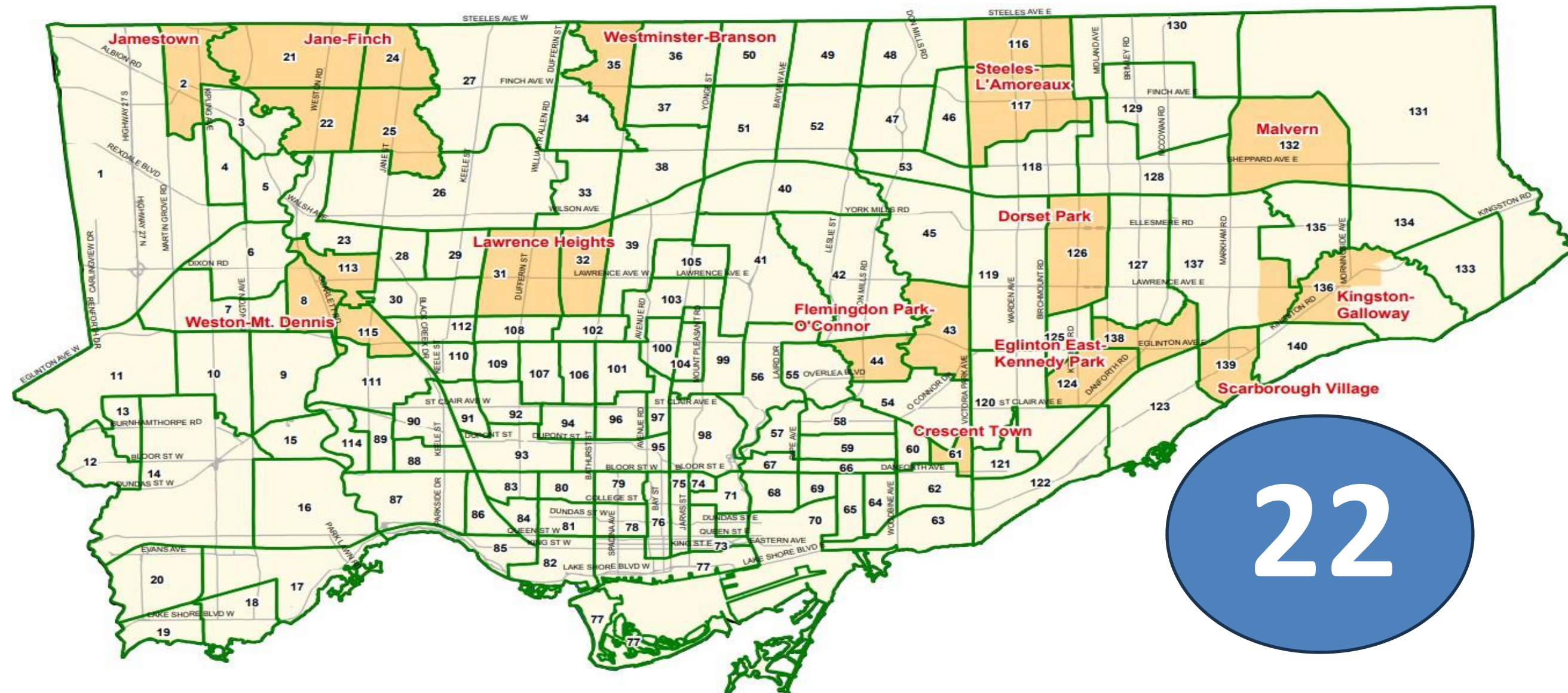
- Citywide scope, Community Newsletters,
- Resident Advisory & Ambassadors
- Local Leadership Grants
- TSNS Summit & Capacity-Building Workshops/Certifications
- Alignment with other Reconciliation and Equity Policies

Social Planning Neighbourhoods



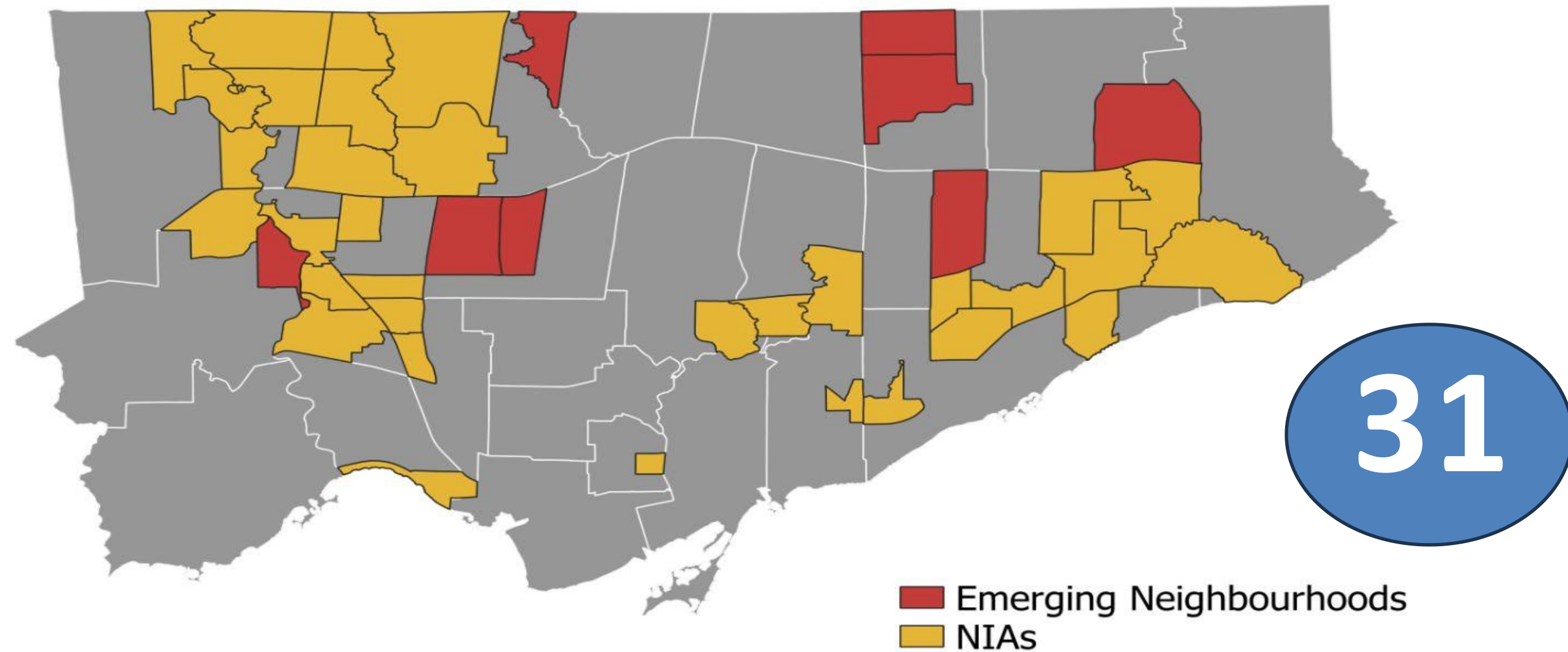
Social Planning Neighbourhoods numbered 140 from the late 1990s through March 2022, when some neighbourhoods were split due to very high population growth. There are now 158 neighbourhoods.

Priority Neighbourhoods



The **Toronto Strong Neighbourhoods Strategy** began in 2005 with the identification of 13 Priority Areas (known as Priority Neighbourhoods). These 13 areas make up 22 social planning neighbourhoods.

Neighbourhood Improvement Areas and Emerging Neighbourhoods



In 2014, City Council approved 31 Neighbourhood Improvement Areas as part of the Toronto Strong Neighbourhoods Strategy and Neighbourhoods Equity Index. 8 former **Priority Neighbourhoods** were identified as **Emerging Neighbourhoods**.

How Does the City Prioritize Investments?

NIA designation is one of many different methods to identify where to target place-based interventions

Estimates of Low-income Residents at Census Tract Level

Secondary Plans

Custom Areas Defined by Policies (e.g. DT East Plan)

Analysis of Asset Mapping in relation to Population Needs

Other Division or Specific Methodology

How Does the City Prioritize Investments?

Beyond NIAs, current supports from Social Development are also determined by some of the following initiatives:

Toronto Poverty
Reduction
Strategy

Action Plan to
Confront Anti-
Black
Racism

Toronto
Reconciliation
Action Plan

Toronto
Newcomer
Strategy

Community
Coordination
Plan

SafeTO

Social and Community Development Plans

How are Social Development and Community Development Plans Identified?

- **Social Development Plans** were identified as a strategy to support Toronto Community Housing (TCH) tenants during a major infrastructure transition in their surrounding community, driven by the Revitalization.

- **Community Development Plans** are identified when an update or a new **Secondary Plan is triggered by significant redevelopment** that will affect families, community groups and businesses in neighbourhoods and regions of the City with populations that have faced historic institutional challenges.

Regent Park Social Development Plan

Timeline of Investments :

- **2007** - Revitalization and SDP Approved
- **2017 – 2019** SDP Refresh completed
- **2020**, City Council approves \$50K budget, 1 full-time permanent City staff and a \$2.5M SDP Grant.
- **2025** – A Community Benefits Agreement valued at \$26.8 M is endorsed by TCH and Tridel, including \$3.4M for community initiatives.

Elements of the SDP

- **Focus:** Actions to support TCH tenants during the Revitalization Process.
- **Collaboration:** TCH and TCHC Tenants, community groups, non-profit organizations and City services.
- **Geographic Scope:** Applies to TCH communities undergoing Revitalization. Triggered by TCH Revitalization.
- **Key Principle:** Social inclusion and Social Cohesion
- **Implementation:** Current community development actions include support of community tables, Youth Tables and engagement of Community-led groups. The Plan is refreshed periodically.
- **Integrated Policy Design:** Leverages existing policies and programs.

Jane Finch Community Development Plan

Timeline of Investments:

- 2024 Council Approves \$50K of existing resources to support engagement activities.
- 2024 UWGT Invests \$1 M over 3 years into community initiatives.

Elements of the CDP

- **Focus:** Embeds equity and reconciliation objectives and policies in a Secondary Plan that mirror actions in a Community Development Plan realized through the development applications process and city budgets.
- **Collaboration:** A City-initiated collaboration among city divisions, agencies, the non-profit sector, the community and the private sector.
- **Geographic Scope:** Applies to neighbourhood and regional areas identified for equitable investments and are undergoing significant growth, which have triggered a Secondary Plan.
- **Key Principle:** Reconciliation, Confronting Anti-Black Racism, and community partnerships.
- **Implementation:** 25-year+ plans. Implemented over 5 or 10-year phases with monitoring of actions and investments through a City Partners Table, Funders Table, Monitoring Mechanism, Resident Leadership Circle, and Community Assemblies.
- **Integrated Policy Design:** Leverages existing, emerging, and new policies and programs.

Evidence-Based Planning: A Tool for Community Development

Building Toronto's New Tool for Assessing Neighbourhoods

What are we building?

- Evidence-driven community wellbeing tools that generate understanding of opportunities, assets and needs within and across Toronto neighbourhoods and communities.

How will it work?

- Tools will generate quantitative and qualitative data analysis to inform priority setting for planning, policy and investments that advance equity and reconciliation.

Who will it benefit?

- All Toronto residents, communities and neighbourhoods.

Tool Development Timeline

***A separate approach will be developed to address the unique needs, opportunities, and the well-being of Indigenous communities.*



2023: Phase 1

- Develop Conceptual Model



2024: Phase 2a

- Identify Quantitative Indicators/Model



2025*: Phase 2b

- Identify Qualitative Model areas



2026: Phase 3

- Testing both Qualitative and Quantitative Models
- Full Tool Development



2027: Phase 4

- Phase 4
- Full Tool Implementation



3 Questions for Feedback from CABRAC

1. Are there learnings from the "Neighbourhood Improvement Area model" that we should be mindful of as we undertake this work?
2. How can we best ensure the City's future equity-informed place-based planning Tool - which includes both qualitative and quantitative data - is accessible and easy for Black communities to engage with and use?
3. How can we best ensure the City's future Tool is meaningful and relevant for Black communities?

Thank You

Presenters:

John Smith, Manager of Community Development

Safiah Chowdhury, Manager of Social Policy