

Traffic Calming (Speed Humps) - Ambleside Avenue

Date: January 30, 2026

To: Etobicoke York Community Council

From: Director, Enforcement and Street Management, Transportation Services

Wards: Ward 3 - Etobicoke - Lakeshore

SUMMARY

This staff report is about a matter that Community Council has delegated authority from City Council to make a final decision.

Transportation Services is recommending the installation of 12 speed humps on Ambleside Avenue, between Islington Avenue and Bentley Drive. Staff's assessment indicates the criteria as set out in the Traffic Calming Policy has been satisfied. Therefore, speed humps should be installed on Ambleside Avenue.

RECOMMENDATIONS

The Director, Enforcement and Street Management, Transportation Services recommends that:

1. Etobicoke York Community Council authorize the installation of traffic calming (12 speed humps) on Ambleside Avenue, between Islington Avenue and Bentley Drive, generally as shown in Attachment 2, Drawing No. TC-598, TC-598-1 and TC-598-2, dated October 2025 from the Director, Enforcement and Street Management, Transportation Services.

FINANCIAL IMPACT

The estimated cost for installing twelve speed humps on is \$48,000. Funding is subject to availability and competing priorities within the Transportation Services interim 2026 Capital Budget.

DECISION HISTORY

This report addresses a new initiative.

COMMENTS

Transportation Services received a request from the Ward Councillor, on behalf of area residents, to investigate the feasibility of installing speed humps on Ambleside Avenue, between Islington Avenue and Bentley Drive. The residents are concerned that motorists travel at a high rate of speed on Ambleside Avenue.

Existing Conditions

Ambleside Avenue is characterized by the following conditions:

- It is a 2-lane, east-west, local roadway
- It operates two-way traffic on a pavement width of approximately 7.0 metres
- The daily two-way traffic volume is approximately 800 vehicles
- The speed limit is 30 km/h
- Heavy trucks are prohibited at all times
- There is no Toronto Transit Commission (TTC) service provided
- There are sidewalks located on both sides of the street
- Castlebar Junior School is located on the northwest corner of Ambleside Avenue and Chartwell Road

The land use in the area consists of primarily single detached residential dwellings. Ambleside Avenue is not within designated Community Safety Zone.

A map of the area and proposed locations of the speed humps is included in Attachment 2.

Study Results

As part of the assessment of the warrant criteria, a vehicle speed and volume study was conducted on Ambleside Avenue for three consecutive days between Tuesday, March 25, 2025, and Thursday, March 27, 2025.

The study results on Ambleside Avenue disclosed the following:

- 24-hour total vehicle volume is 796 vehicles
- The block length from Islington Avenue to Chartwell Road is 320 metres
- The block length from Chartwell Road to Bentley Drive is 400 metres
- The operating speed, which is the speed at which 85 percent of traffic is travelling at or below, was observed at 48 km/h
- The 95th percentile speed, which is the speed at which 95 percent of traffic is travelling at or below, was observed at 53 km/h

Based on the study results, Ambleside Avenue has satisfied the warrant criteria for both minimum block length and minimum vehicle speed. The block length was greater than 120 metres and the operating speed is 18 km/h over the warranted speed of 30 km/h and 95th percentile is 23 km/h over the warranted speed of 30 km/h.

The overall investigation concluded that the eligibility and warrant criteria as outlined in the updated Traffic Calming Policy has been satisfied. Therefore, staff recommend the installation of speed humps on Ambleside Avenue.

Relative Priority and Other Impacts

In the event that the number of approved requests for roadway traffic calming measures exceed the budget allocated for installation, funding for approved installations will be prioritized using a Prioritization Score. This score is made up of a Quantitative Score and a Qualitative Score.

The Quantitative Score is based on the results of the data collection, including travel speeds and traffic volumes to prioritize locations with higher vehicle speeds and volumes.

The Qualitative Score includes:

- Collision history to prioritize locations with a history of serious injury or fatal collisions and those involving a pedestrian or person cycling
- Equity to prioritize equity-deserving communities with a high-concentration of priority populations and those that are transportation disadvantaged
- Expected presence of vulnerable road users (elderly population, school children and pedestrians, including transit riders) to prioritize locations with a higher risk of fatal and serious injury collisions

The Quantitative and Qualitative Scores are averaged to provide the complete Prioritization Score. Ambleside Avenue, between Islington Avenue and Bentley Drive, scored 59 ranking points out of a possible 100.

No alterations to parking regulations will be required, nor will the number of parking spaces be affected by the installation of speed humps. Installation of speed humps will have minimal effect on winter services, street cleaning and garbage collection.

Consultation with Emergency Services

Consultation with emergency services (Toronto Police Service, Toronto Fire Services and Toronto Paramedic Services) is required to ensure that the design and layout of a traffic calming proposal does not unduly affect their operations. Emergency services were advised of this proposal.

Toronto Paramedic Services responded and have advised they are not opposed to the installation of speed humps. However, it may negatively impact their service delivery. A copy of their full response is included in Attachment 3.

Toronto Fire Services and Toronto Police Service have not provided comments back at the time of writing this report. Installing speed humps will result in slower operating speeds for all vehicles, including emergency service vehicles.

The Ward Councillor has been advised of the recommendations in this report.

CONTACT

Shawn Dillon, Manager Traffic Operations (Area 2), Transportation Services
416-394-8409, Shawn.Dillon@toronto.ca

SIGNATURE

Mike Barnet, P. Eng.
Director, Enforcement and Street Management, Transportation Services

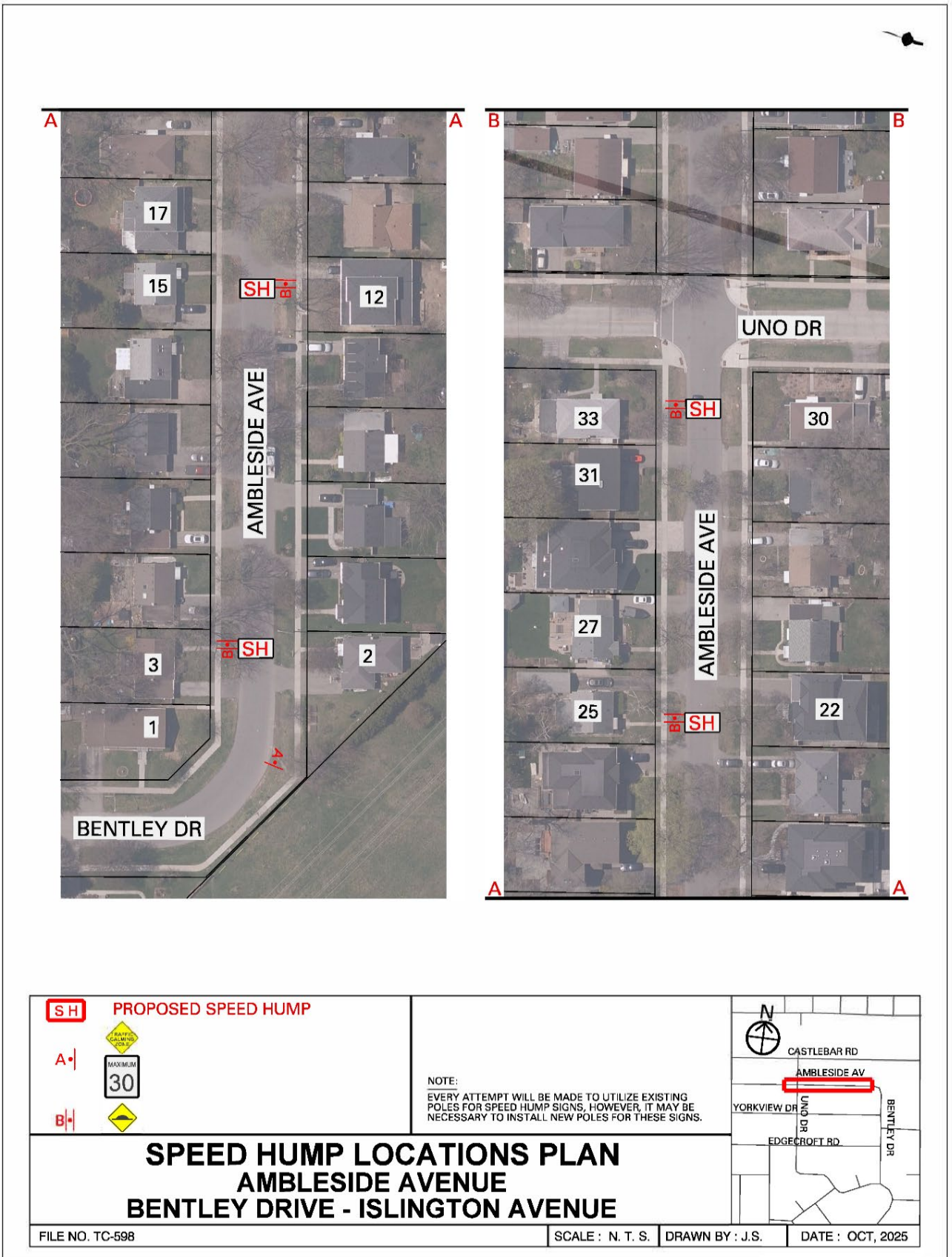
ATTACHMENTS

Attachment 1: Traffic Calming Warrant - Ambleside Avenue
Attachment 2: Speed Hump Locations Plan Speed Hump - Ambleside Avenue
Attachment 3: Letter from Toronto Paramedic Services, dated January 12, 2026

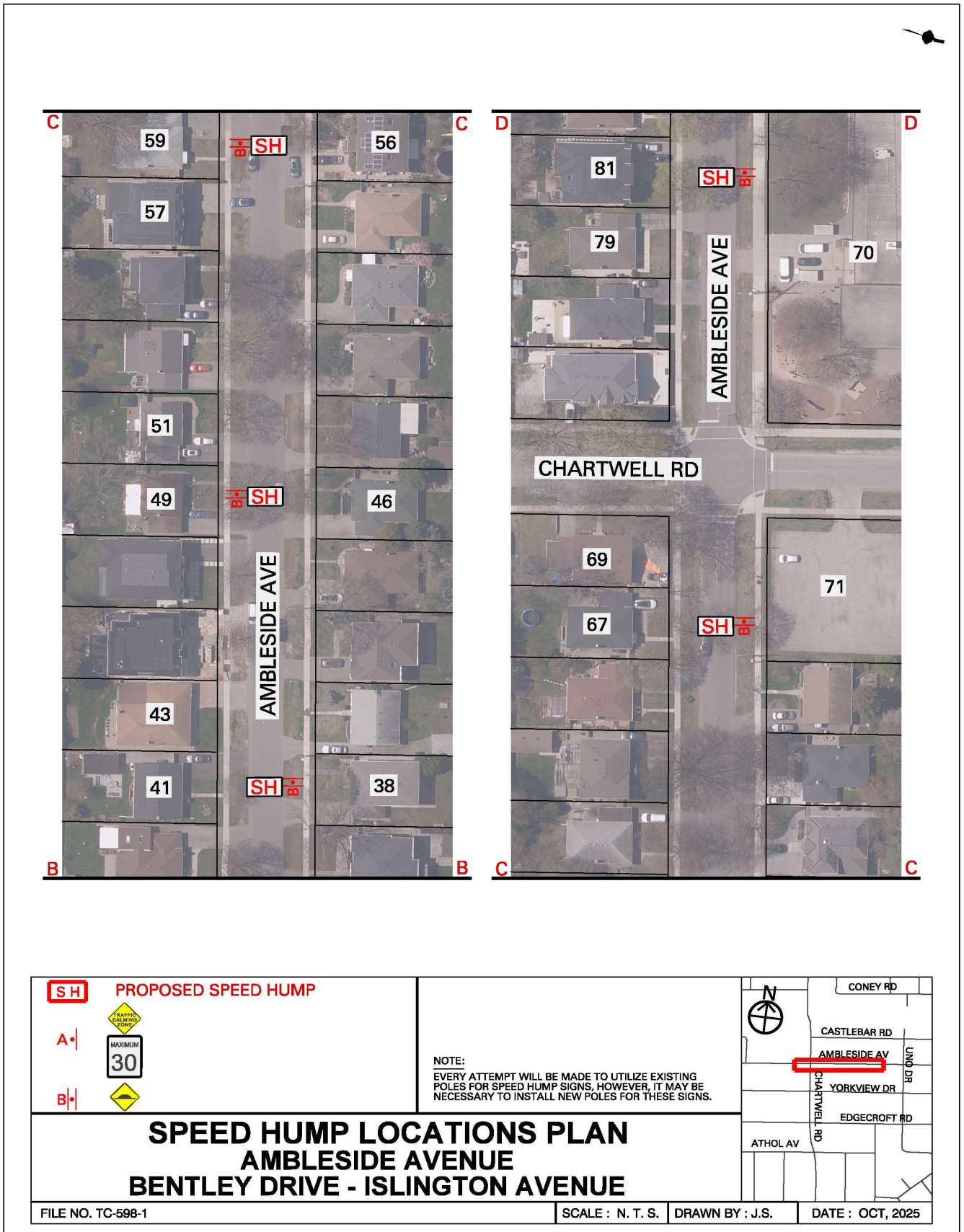
Attachment 1: Traffic Calming Warrant - Ambleside Avenue

| Criteria | | Requirement | Warrant Satisfied? |
|----------------------|-----------------------|--|------------------------|
| Community Support | | A direct request from the Ward Councillor OR identified by Transportation Services in consultation with the Ward Councillor | Yes |
| Eligibility Criteria | Road Classification | Classified as a local or collector roadway, according to the Toronto Road Classification System | Yes |
| | Sidewalks | Presence of a sidewalk on at least one side of a local roadway and both sides of a collector roadway is preferred but not required | Yes |
| | Traffic Volume | Maximum average daily traffic volume of less than 8,000 vehicles per day | Yes |
| | Road Grade | Maximum roadway grade of up to 5%, can be considered in locations where the road grade is between 5% and 8% with additional review | Yes |
| | Emergency Services | No significant impacts on emergency services, including Toronto Fire, Paramedic and Police Services | Yes |
| | Transit Services | No significant impacts to regularly scheduled Toronto Transit Commission (TTC) services | Yes |
| Warrant Criteria | Minimum Block Length | Minimum block length of 120 metres based on the measured distance from centre to centre of controlled intersections AND | Yes (320m and 400m) |
| | 85th percentile speed | Minimum 85th percentile speed of 8 km/h over the warranted speed limit OR | Yes (18 km/h) |
| | 95th percentile speed | Minimum 95th percentile speed of 15 km/h over the warranted speed limit | Yes (23 km/h) |

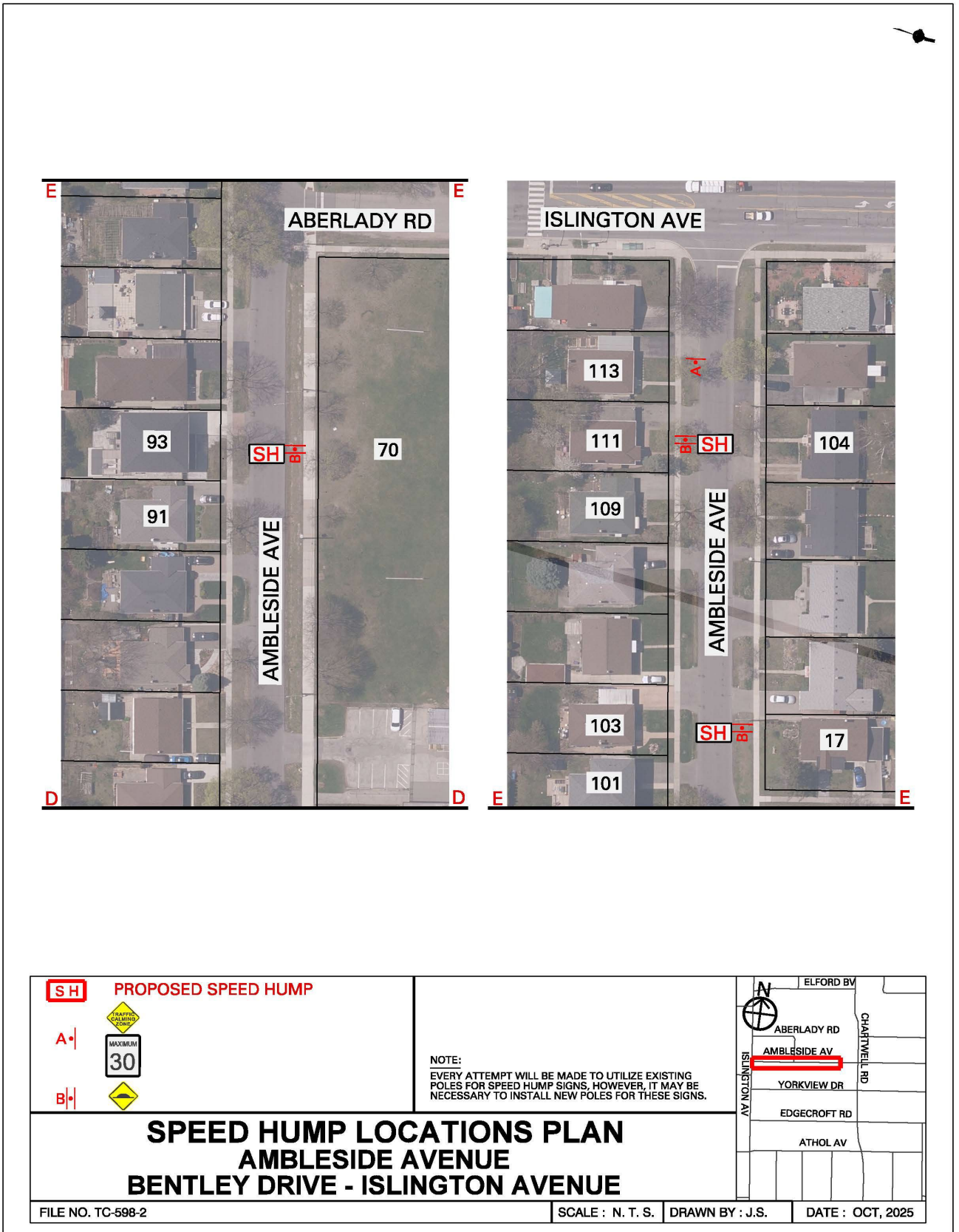
Attachment 1: Speed Hump Locations Plan - Ambleside Avenue



Attachment 2: Speed Hump Locations Plan - Ambleside Avenue



Attachment 3: Speed Hump Locations Plan - Ambleside Avenue



Attachment 3: Letter from Toronto Paramedic Services, January 12, 2025

From: EMS Planning
Sent: January 12, 2026 1:40 PM
To: Harpal Panesar
Cc: Atif Sharif; EMS Planning
Subject: RE: Emergency Services Comments Request - Traffic Calming on Ambleside Avenue

Hi Harpal,

We have received and reviewed the proposal for installation of speed humps on Ambleside Avenue, between Islington Avenue and Bentley Drive, with the following comments:

The installation of speed humps on Ambleside Avenue, between Islington Avenue and Bentley Drive, will impact response and transport times for residents that reside on the roadway speed humps are installed. Impacts may extend to community members if Ambleside Avenue, between Islington Avenue and Bentley Drive, serves access to other roadways. It is important that the applicant understands that the installation of traffic calming devices will reduce the speed that emergency vehicles travel when responding to emergencies on roadways where they are installed.

Toronto Paramedic Services is supportive of community initiatives that improve the safety of all citizens of, and visitors to, the City of Toronto. Traffic and pedestrian safety are key components of a healthy neighbourhood, and we endeavour to support the wishes of the community to implement measures to improve upon these components.

