

Traffic Calming (Speed Humps) - Redgrave Drive between Waterbury Drive and Longbourne Drive

Date: January 30, 2026

To: Etobicoke York Community Council

From: Director, Enforcement and Street Management, Transportation Services

Wards: Ward 1, Etobicoke North

SUMMARY

This staff report is about a matter that Community Council has delegated authority from City Council to make a final decision.

Transportation Services is recommending the installation of speed humps on Redgrave Drive, between Waterbury Drive and Longbourne Drive. Staff's assessment indicates the criteria as set out in the Traffic Calming Policy has been satisfied. Therefore, speed humps should be installed on Redgrave Drive.

RECOMMENDATIONS

The Director, Enforcement and Street Management, Transportation Services recommends that:

1. Etobicoke York Community Council authorize the installation of traffic calming (eight speed humps) on Redgrave Drive, between Waterbury Drive and Longbourne Drive, generally as shown in Attachment 2, Drawing No. TC-631 and TC-631-1, dated December 2025 from the Director, Enforcement and Street Management Transportation Services.

FINANCIAL IMPACT

The estimated cost for installing 8 speed humps on Redgrave Drive is \$32,000. Funding is subject to availability and competing priorities within the Transportation Services interim 2026 Capital Budget.

DECISION HISTORY

This report addresses a new initiative.

COMMENTS

Transportation Services received a request from the Ward Councillor, on behalf of area residents, to investigate the feasibility of installing speed humps on Redgrave Drive, between Waterbury Drive and Longbourne Drive. The residents are concerned that motorists travel at a high rate of speed on this section of Redgrave Drive.

Existing Conditions

Redgrave Drive between Waterbury Drive and Longbourne Drive is characterized by the following conditions:

- It is a two-lane, north-south, local roadway
- It operates two-way traffic on a pavement width of approximately 8.5 metres

The daily two-way traffic volume is approximately 1,600 vehicles

- The speed limit is 30 km/h
- Heavy trucks are prohibited at all times
- There is no Toronto Transit Commission (TTC) service provided
- There are sidewalks located on both sides of the street

The land use in the area consists of detached and semi-detached residential dwellings. Parkfield Junior School is located on the south side of Redgrave Drive opposite Waterbury Drive. The section of Redgrave Drive between Martin Grove Road and Clarion Road is designated a Community Safety Zone.

A map of the area and proposed locations of the speed humps is included in Attachments 2.

Study Results

As part of the assessment of the warrant criteria, vehicle speed and volume studies were conducted on Redgrave Drive in August 2025.

The study results on Redgrave Drive between Waterbury Drive and Longbourne Drive disclosed the following:

- 24-hour total vehicle volume is 1,600 vehicles
- The block length from Waterbury Drive to Longbourne Drive is 575 metres
- The operating speed, which is the speed at which 85 percent of traffic is travelling at or below, was observed at 44 km/h
- The 95th percentile speed, which is the speed at which 95 percent of traffic is travelling at or below, was observed at 49 km/h

Based on the study results, the subject section of Redgrave Drive has satisfied the warrant criteria for both minimum block length and minimum vehicle speed. The block length was greater than 120 metres and the operating speed is 14 km/h over the warranted speed of 30 km/h or 95th percentile 19 km/h over the warranted speed of 30 km/h.

The overall investigation concluded that the eligibility and warrant criteria as outlined in the updated Traffic Calming Policy has been satisfied. Therefore, staff recommend the installation of speed humps on Redgrave Drive between Waterbury Drive and Longbourne Drive.

Although not specifically requested, we also reviewed Redgrave Drive from Martin Grove Road to Waterbury Drive for traffic calming measures. This section of Redgrave Drive is a four-lane collector roadway with a 40 km/h speed limit, when the study results were compared to the warrant criteria, it failed to satisfy the minimum requirements. The operating speed was recorded at 5 km/h over the warranted speed limit of 40 km/h and the 95th percentile was recorded at 9 km/h over the 40 km/h speed limit.

Relative Priority and Other Impacts

In the event that the number of approved requests for roadway traffic calming measures exceed the budget allocated for installation, funding for approved installations will be prioritized using a Prioritization Score. This score is made up of a Quantitative Score and a Qualitative Score.

The Quantitative Score is based on the results of the data collection, including travel speeds and traffic volumes to prioritize locations with higher vehicle speeds and volumes.

The Qualitative Score includes:

- Collision history to prioritize locations with a history of serious injury or fatal collisions and those involving a pedestrian or person cycling
- Equity to prioritize equity-deserving communities with a high-concentration of priority populations and those that are transportation disadvantaged
- Expected presence of vulnerable road users (elderly population, school children and pedestrians, including transit riders) to prioritize locations with a higher risk of fatal and serious injury collisions

The Quantitative and Qualitative Scores are averaged to provide the complete Prioritization Score. Redgrave Drive, between Waterbury Drive and Longbourne Drive, scored 56 ranking points out of a possible 100.

No alterations to parking regulations will be required, nor will the number of parking spaces be affected by the installation of speed humps. Installation of speed humps will have minimal effect on winter services, street cleaning and garbage collection.

Consultation with Emergency Services

Consultation with emergency services (Toronto Police Service, Toronto Fire Services and Toronto Paramedic Services) is required to ensure that the design and layout of a traffic calming proposal does not unduly affect their operations. Emergency services were advised of this proposal.

Toronto Paramedic Services responded and have advised they are not opposed to the installation of speed humps. However, it may negatively impact their service delivery. A copy of their full response is included in Attachment 3.

Comments have not been received back at the time of writing this report from Toronto Police Service or Toronto Fire Services. Installing speed humps will result in slower operating speeds for all vehicles, including emergency service vehicles.

The Ward Councillor has advised of the recommendations in this report.

CONTACT

Shawn Dillon, Manager Traffic Operations (Area 2), Transportation Services
416-394-8409, Shawn.Dillon@toronto.ca

SIGNATURE

Mike Barnet, P. Eng.
Director, Enforcement and Street Management, Transportation Services

ATTACHMENTS

Attachment 1: Traffic Calming Warrant - Redgrave Drive
Attachment 2: Speed Hump Locations Plan - Redgrave Drive
Attachment 3: Letter from Toronto Paramedic Services, December 22, 2025

Attachment 1: Traffic Calming Warrant - Redgrave Drive

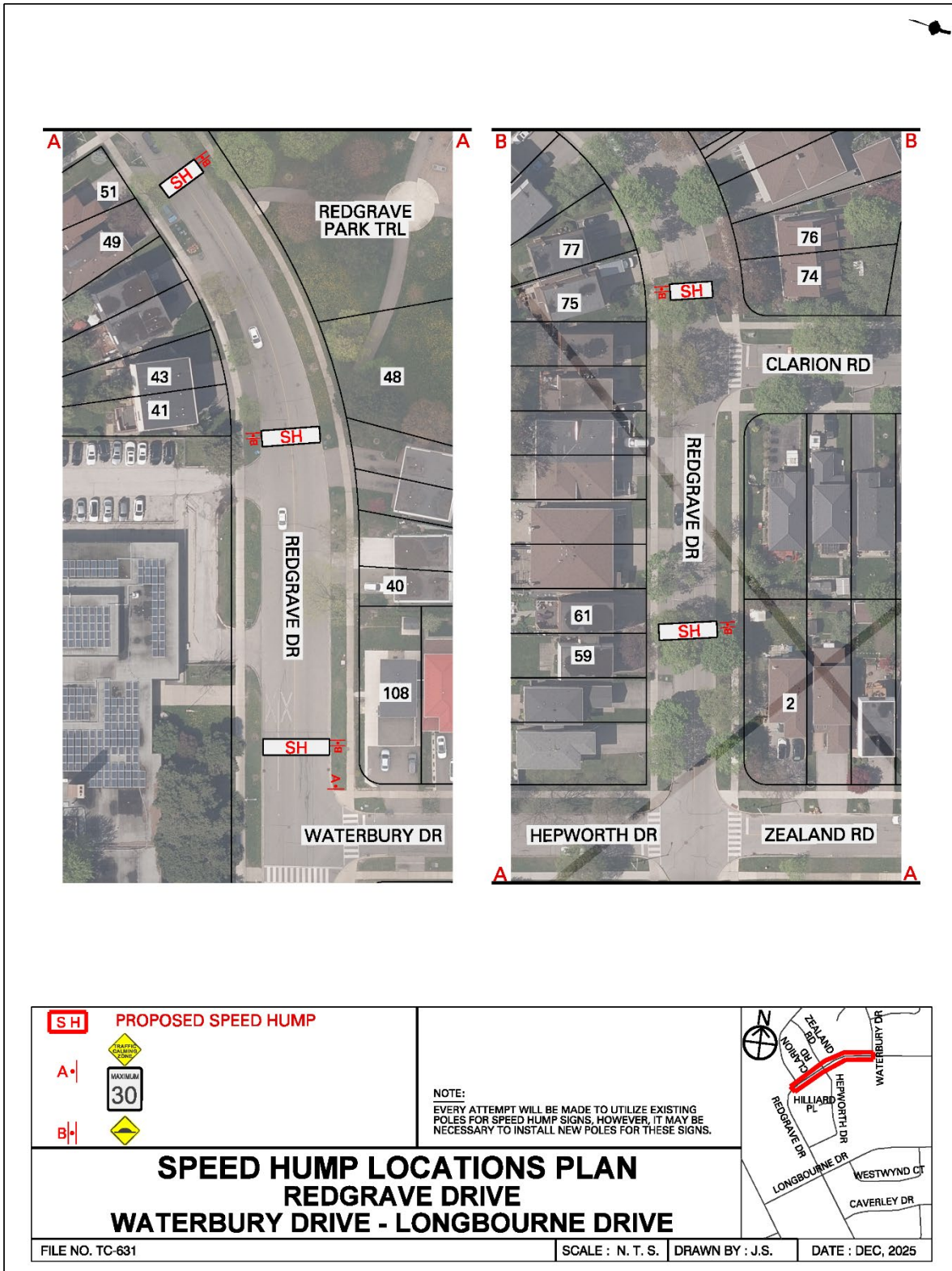
Waterbury Drive to Longbourne Drive

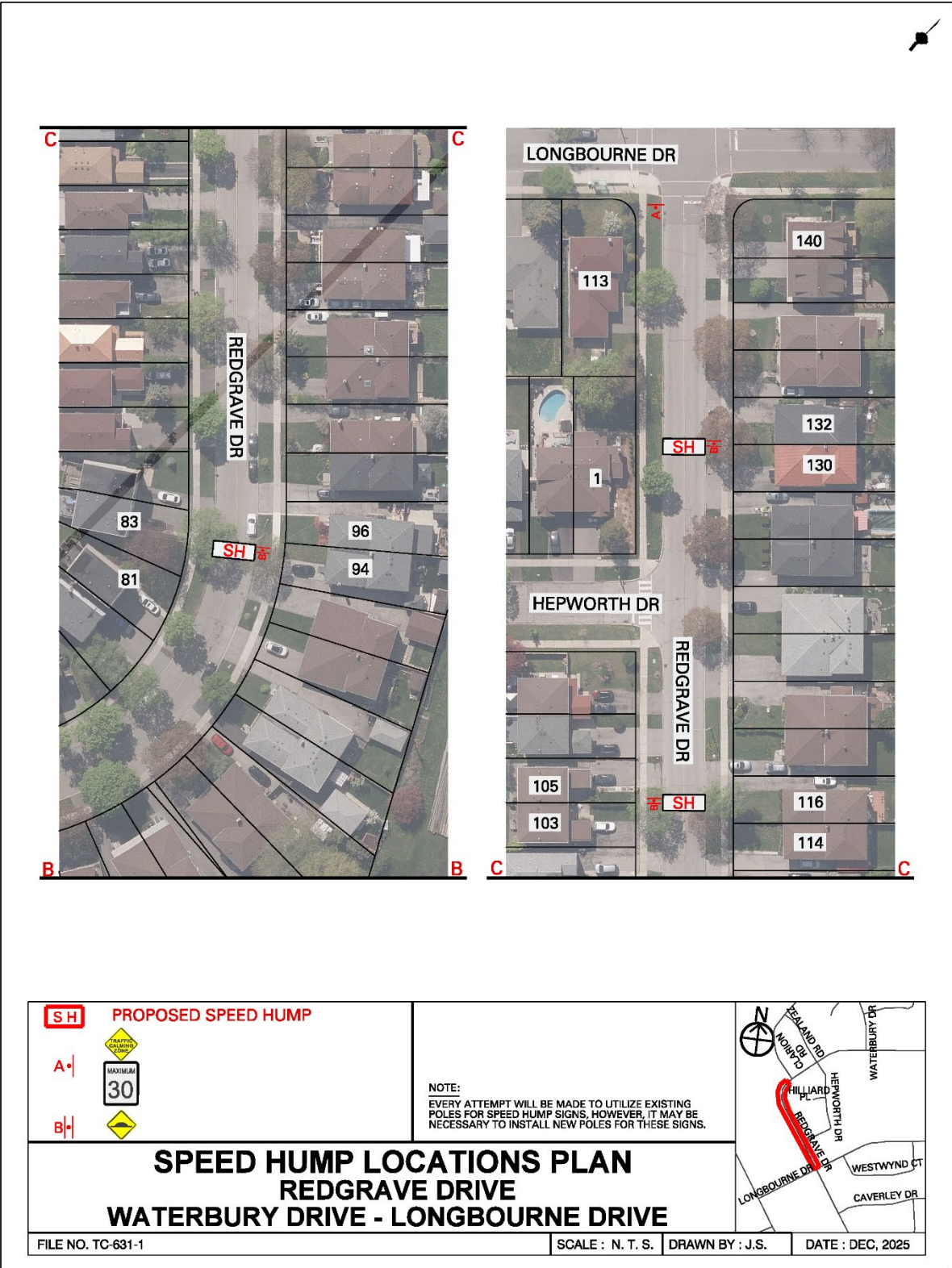
Criteria		Requirement	Warrant Satisfied?
Community Support		A direct request from the Ward Councillor OR identified by Transportation Services in consultation with the Ward Councillor	Yes
Eligibility Criteria	Road Classification	Classified as a local or collector roadway, according to the Toronto Road Classification System	Yes
	Sidewalks	Presence of a sidewalk on at least one side of a local roadway and both sides of a collector roadway is preferred but not required	Yes
	Traffic Volume	Maximum average daily traffic volume of less than 8,000 vehicles per day	Yes
	Road Grade	Maximum roadway grade of up to 5%, can be considered in locations where the road grade is between 5% and 8% with additional review	Yes
	Emergency Services	No significant impacts on emergency services, including Toronto Fire, Paramedic and Police Services	Yes
	Transit Services	No significant impacts to regularly scheduled Toronto Transit Commission (TTC) services	Yes
Warrant Criteria	Minimum Block Length	Minimum block length of 120 metres based on the measured distance from centre to centre of controlled intersections AND	Yes (575)
	85th percentile speed	Minimum 85th percentile speed of 8 km/h over the warranted speed limit OR	Yes (14 km/h)
	95th percentile speed	Minimum 95th percentile speed of 15 km/h over the warranted speed limit	Yes (19 km/h)

Martin Grove Road to Waterbury Drive

Criteria		Requirement	Warrant Satisfied?
Community Support		A direct request from the Ward Councillor OR identified by Transportation Services in consultation with the Ward Councillor	Yes
Eligibility Criteria	Road Classification	Classified as a local or collector roadway, according to the Toronto Road Classification System	Yes
	Sidewalks	Presence of a sidewalk on at least one side of a local roadway and both sides of a collector roadway is preferred but not required	Yes
	Traffic Volume	Maximum average daily traffic volume of less than 8,000 vehicles per day	Yes
	Road Grade	Maximum roadway grade of up to 5%, can be considered in locations where the road grade is between 5% and 8% with additional review	Yes
	Emergency Services	No significant impacts on emergency services, including Toronto Fire, Paramedic and Police Services	T.B.D.
	Transit Services	No significant impacts to regularly scheduled Toronto Transit Commission (TTC) services	TTC bus route
Warrant Criteria	Minimum Block Length	Minimum block length of 120 metres based on the measured distance from centre to centre of controlled intersections AND	Yes (210)
	85th percentile speed	Minimum 85th percentile speed of 8 km/h over the warranted speed limit OR	No (4 km/h)
	95th percentile speed	Minimum 95th percentile speed of 15 km/h over the warranted speed limit	No (9 km/h)

Attachment 2: Speed Hump Locations Plan - Redgrave Drive





Attachment 3: Letter from Toronto Paramedic Services, Dec. 22,2025

From: [EMS Planning](#)
To: [Mohammed Gamar](#)
Cc: [Atif Sharif](#); [EMS Planning](#)
Subject: RE: Emergency Services Comments Request - Traffic Calming on Redgrave Drive between Waterbury Drive and Longbourne Drive
Date: December 22, 2025 1:41:25 PM
Attachments: [image002.png](#)
[image003.png](#)

Hi Mohammed,

We have received and reviewed the proposal for installation of speed humps on Redgrave Drive, between Waterbury Drive and Longbourne Drive, with the following comments:

The installation of speed humps on Redgrave Drive, between Waterbury Drive and Longbourne Drive, will impact response and transport times for residents that reside on the roadway speed humps are installed. Impacts may extend to community members if Redgrave Drive, between Waterbury Drive and Longbourne Drive, serves access to other roadways. It is important that the applicant understands that the installation of traffic calming devices will reduce the speed that emergency vehicles travel when responding to emergencies on roadways where they are installed.

Toronto Paramedic Services is supportive of community initiatives that improve the safety of all citizens of, and visitors to, the City of Toronto. Traffic and pedestrian safety are key components of a healthy neighbourhood, and we endeavour to support the wishes of the community to implement measures to improve upon these components.

