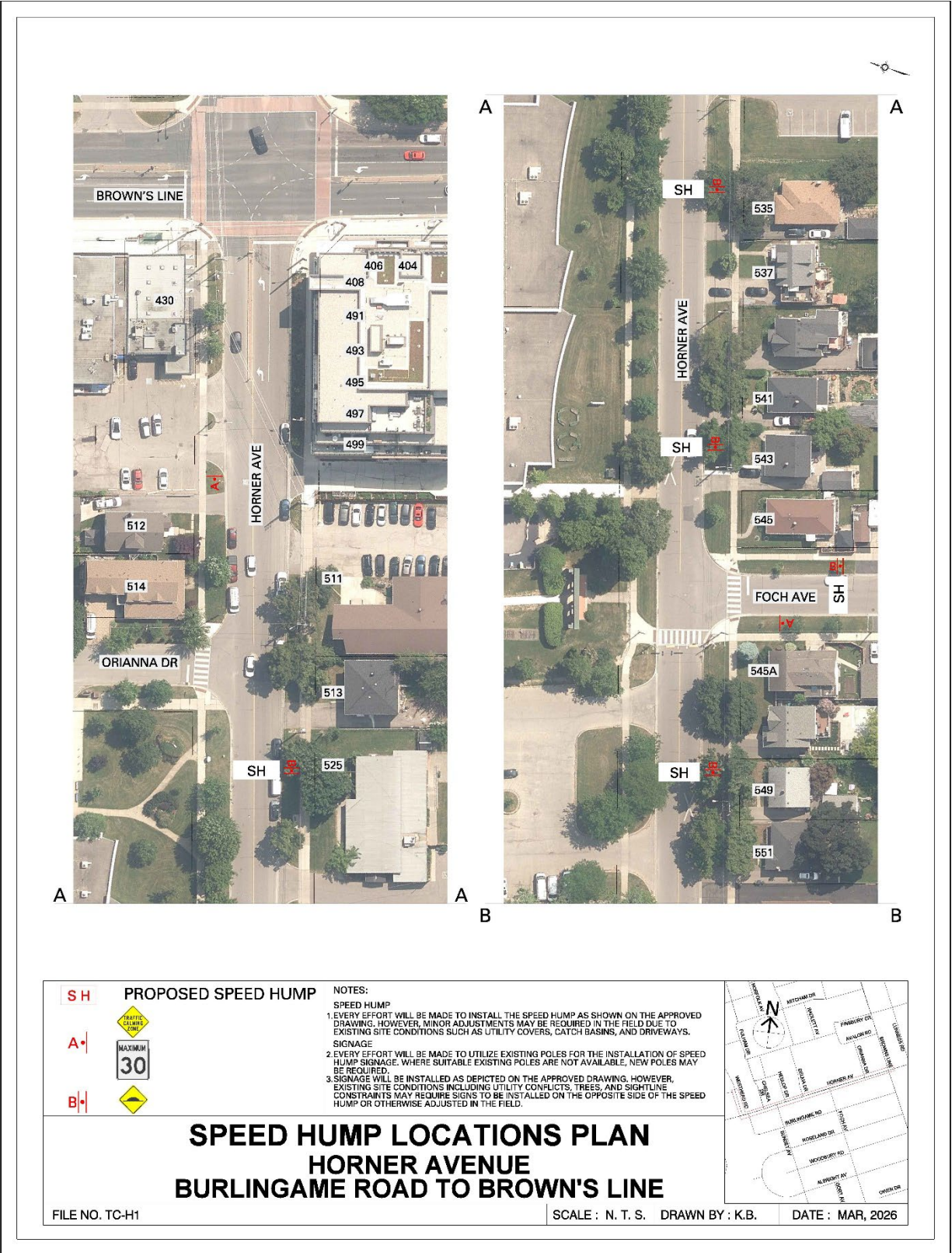
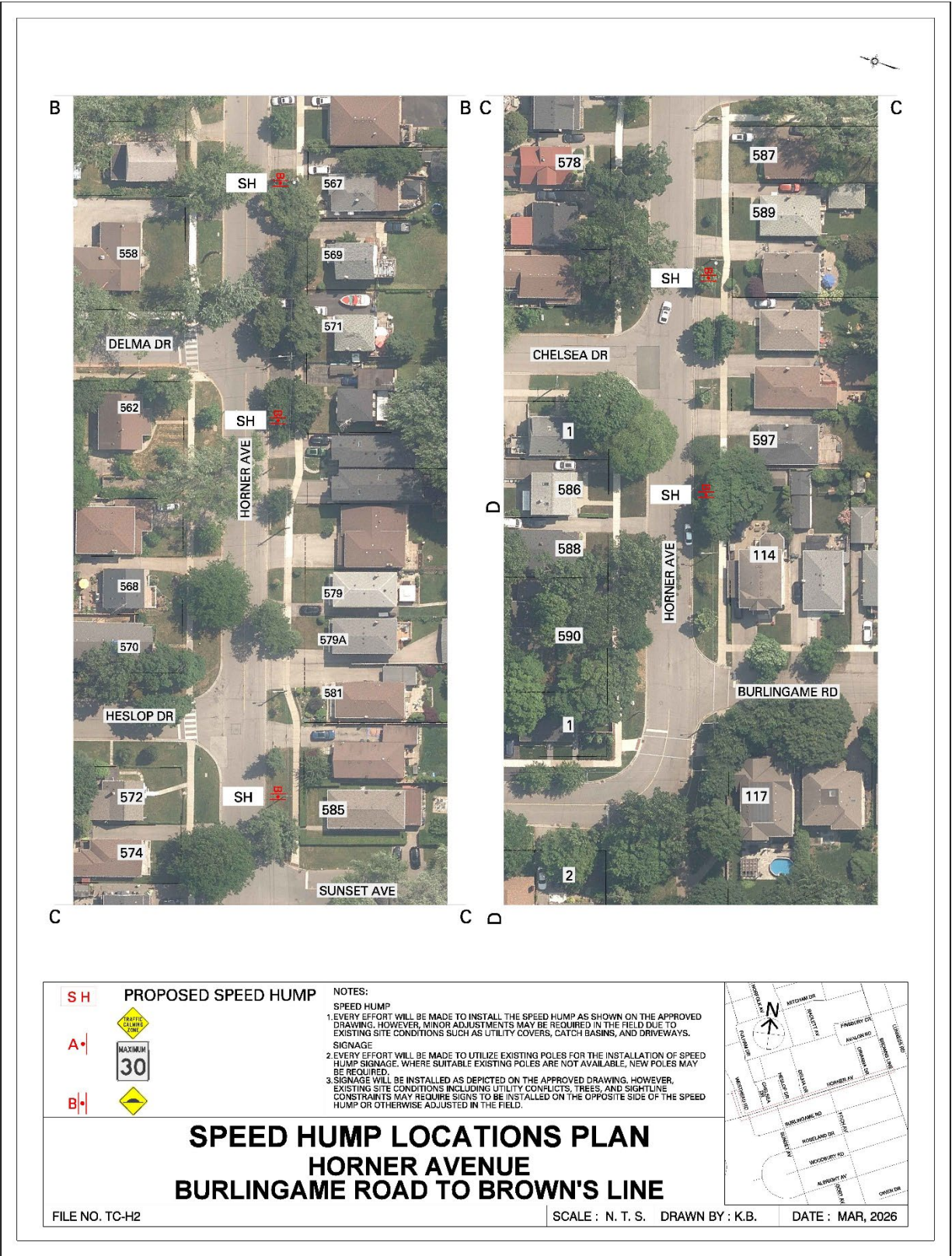


Attachment 12 - Speed Hump Locations Plans



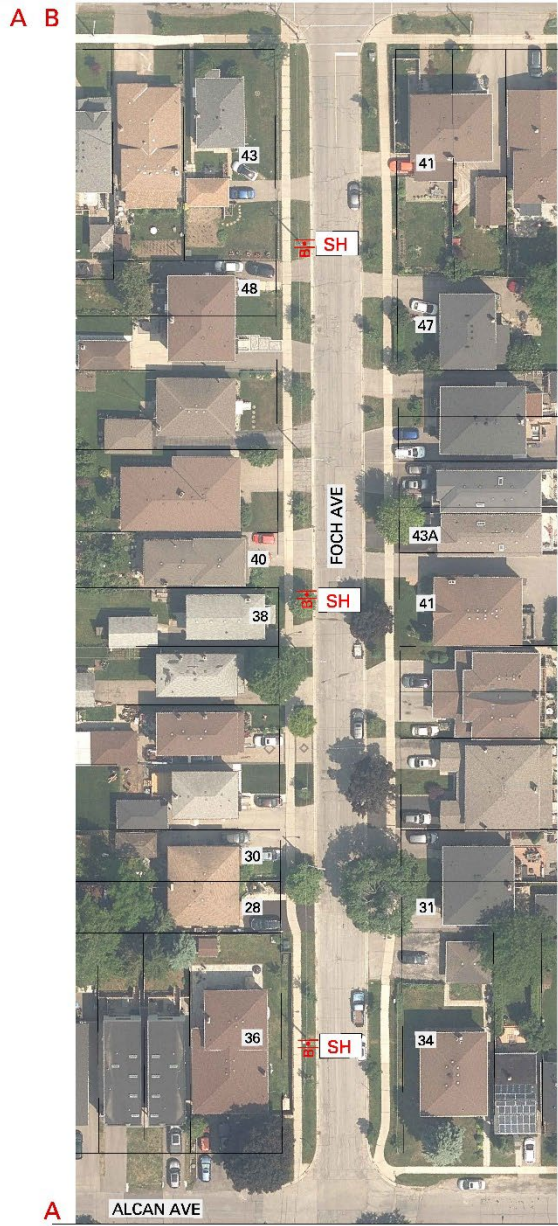




D

D

S H	PROPOSED SPEED HUMP	<p>NOTES:</p> <p>SPEED HUMP</p> <p>1. EVERY EFFORT WILL BE MADE TO INSTALL THE SPEED HUMP AS SHOWN ON THE APPROVED DRAWING. HOWEVER, MINOR ADJUSTMENTS MAY BE REQUIRED IN THE FIELD DUE TO EXISTING SITE CONDITIONS SUCH AS UTILITY COVERS, CATCH BASINS, AND DRIVEWAYS.</p> <p>SIGNAGE</p> <p>2. EVERY EFFORT WILL BE MADE TO UTILIZE EXISTING POLES FOR THE INSTALLATION OF SPEED HUMP SIGNAGE. WHERE SUITABLE EXISTING POLES ARE NOT AVAILABLE, NEW POLES MAY BE REQUIRED.</p> <p>3. SIGNAGE WILL BE INSTALLED AS DEPICTED ON THE APPROVED DRAWING, HOWEVER, EXISTING SITE CONDITIONS INCLUDING UTILITY CONFLICTS, TREES, AND SIGHTLINE CONSTRAINTS MAY REQUIRE SIGNS TO BE INSTALLED ON THE OPPOSITE SIDE OF THE SPEED HUMP OR OTHERWISE ADJUSTED IN THE FIELD.</p>			
A				B	
<p>SPEED HUMP LOCATIONS PLAN WESTHEAD ROAD HORNER AVENUE TO AINTREE COURT</p>			FILE NO. TC-H3	SCALE : N. T. S. DRAWN BY : K.B.	DATE : MAR, 2026



SH PROPOSED SPEED HUMP



NOTES:
SPEED HUMP
 1. EVERY EFFORT WILL BE MADE TO INSTALL THE SPEED HUMP AS SHOWN ON THE APPROVED DRAWING. HOWEVER, MINOR ADJUSTMENTS MAY BE REQUIRED IN THE FIELD DUE TO EXISTING SITE CONDITIONS SUCH AS UTILITY COVERS, CATCH BASINS, AND DRIVEWAYS.
SIGNAGE
 2. EVERY EFFORT WILL BE MADE TO UTILIZE EXISTING POLES FOR THE INSTALLATION OF SPEED HUMP SIGNAGE. WHERE SUITABLE EXISTING POLES ARE NOT AVAILABLE, NEW POLES MAY BE REQUIRED.
 3. SIGNAGE WILL BE INSTALLED AS DEPICTED ON THE APPROVED DRAWING. HOWEVER, EXISTING SITE CONDITIONS INCLUDING UTILITY CONFLICTS, TREES, AND SIGHTLINE CONSTRAINTS MAY REQUIRE SIGNS TO BE INSTALLED ON THE OPPOSITE SIDE OF THE SPEED HUMP OR OTHERWISE ADJUSTED IN THE FIELD.



SPEED HUMP LOCATIONS PLAN FOCH AVENUE EDGEWARE DRIVE TO HORNER AVENUE

FILE NO. T1068

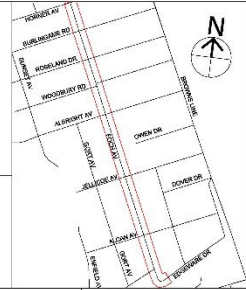
SCALE : N. T. S. DRAWN BY : P.M.

DATE : JAN, 2026



- SH** PROPOSED SPEED HUMP
- A** TRAFFIC CONTROL SIGN
- B** MAXIMUM 30 SIGN

NOTES:
SPEED HUMP
 1. EVERY EFFORT WILL BE MADE TO INSTALL THE SPEED HUMP AS SHOWN ON THE APPROVED DRAWING. HOWEVER, MINOR ADJUSTMENTS MAY BE REQUIRED IN THE FIELD DUE TO EXISTING SITE CONDITIONS SUCH AS UTILITY COVERS, CATCH BASINS, AND DRIVEWAYS.
SIGNAGE
 2. EVERY EFFORT WILL BE MADE TO UTILIZE EXISTING POLES FOR THE INSTALLATION OF SPEED HUMP SIGNAGE. WHERE SUITABLE EXISTING POLES ARE NOT AVAILABLE, NEW POLES MAY BE REQUIRED.
 3. SIGNAGE WILL BE INSTALLED AS DEPICTED ON THE APPROVED DRAWING. HOWEVER, EXISTING SITE CONDITIONS INCLUDING UTILITY CONFLICTS, TREES, AND SIGHTLINE CONSTRAINTS MAY REQUIRE SIGNS TO BE INSTALLED ON THE OPPOSITE SIDE OF THE SPEED HUMP OR OTHERWISE ADJUSTED IN THE FIELD.



SPEED HUMP LOCATIONS PLAN FOCH AVENUE EDGEWARE DRIVE TO HORNER AVENUE

FILE NO. T1068

SCALE : N. T. S.

DRAWN BY : P.M.

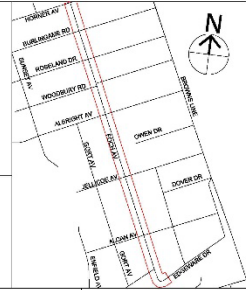
DATE : JAN, 2026



SH PROPOSED SPEED HUMP



NOTES:
SPEED HUMP
 1. EVERY EFFORT WILL BE MADE TO INSTALL THE SPEED HUMP AS SHOWN ON THE APPROVED DRAWING. HOWEVER, MINOR ADJUSTMENTS MAY BE REQUIRED IN THE FIELD DUE TO EXISTING SITE CONDITIONS SUCH AS UTILITY COVERS, CATCH BASINS, AND DRIVEWAYS.
SIGNAGE
 2. EVERY EFFORT WILL BE MADE TO UTILIZE EXISTING POLES FOR THE INSTALLATION OF SPEED HUMP SIGNAGE. WHERE SUITABLE EXISTING POLES ARE NOT AVAILABLE, NEW POLES MAY BE REQUIRED.
 3. SIGNAGE WILL BE INSTALLED AS DEPICTED ON THE APPROVED DRAWING, HOWEVER, EXISTING SITE CONDITIONS INCLUDING UTILITY CONFLICTS, TREES, AND SIGHTLINE CONSTRAINTS MAY REQUIRE SIGNS TO BE INSTALLED ON THE OPPOSITE SIDE OF THE SPEED HUMP OR OTHERWISE ADJUSTED IN THE FIELD.



SPEED HUMP LOCATIONS PLAN FOCH AVENUE EDGEWARE DRIVE TO HORNER AVENUE

FILE NO. T1068 SCALE : N. T. S. DRAWN BY : P.M. DATE : JAN, 2026