

Options for Connecting the Loop Trail to The Meadoway

Date: June 30, 2026

To: Infrastructure and Environment Committee

From: Executive Director, Environment, Climate and Forestry

Wards: City Wide

SUMMARY

Toronto's Ravine Strategy (the "Strategy") provides a long-term framework for protecting, restoring, and enhancing Toronto's ravine system as a key component of the city's green infrastructure. The Strategy guides how the City manages and invests in ravines to support ecological health, improve access to natural areas, and expand opportunities for recreation and active transportation.

"Connect" is one of five guiding principles of the Strategy. Toronto's ravines provide opportunities for residents and visitors to connect with nature, the city's rich history and each other, and to access these spaces in a safe and sustainable manner. The Strategy envisions a more connected network of trails and greenspaces such as linking the Loop Trail, The Meadoway, and Rouge National Urban Park into a continuous, city-wide system.

This report provides an overview of the existing trail networks and outlines key physical and jurisdictional considerations to the planned trail connection between the Loop Trail and The Meadoway. Through coordinated efforts between the City of Toronto, Toronto and Region Conservation Authority and many community and funding partners, infrastructure improvements are well underway with new sections open to the public in summer 2026. The new safe and accessible connection between The Meadoway and the Loop Trail is anticipated to be completed and open to the public by the end of 2027.

RECOMMENDATIONS

The Executive Director of Environment, Climate and Forestry recommends that:

1. The Infrastructure and Environment Committee receive this report for information.

FINANCIAL IMPACT

There are no financial implications resulting from the adoption of this report.

DECISION HISTORY

At the March 25 and 26, 2026 meeting of City Council requested the Executive Director, Environment, Climate and Forestry to work with Toronto and Region Conservation Authority to determine options for a trail hook-up from the proposed "Ravine Loop" to The Meadowway and report to the July 15, 2026, meeting of the Infrastructure and Environment Committee.

[Agenda Item History - 2026.IE27.7](#)

COMMENTS

Improving connectivity across Toronto's ravine system is a key objective of the Ravine Strategy (the "Strategy"), recognizing that gaps in the trail network can limit access, usability, and safe movement through these spaces. Advancing more continuous trail connections supports access to nature, active transportation, and a more integrated city-wide network of greenspaces. Well-connected trail systems also provide more equitable access to Toronto's urban forests within the ravines, enabling residents and visitors to experience the physical and mental health benefits of nature, including reduced stress, improved well-being, and other positive health outcomes.

This report presents existing and planned route options that connect the planned Loop Trail and The Meadowway. It provides an overview of the existing trail networks and outlines key physical and jurisdictional considerations. Both trails support the implementation of the Strategy by improving connectivity within Toronto's ravine and greenspace network.

Toronto's ravine system provides natural north-south corridors through the city, such as through the Don and Humber valleys. In recent years, east-west corridors, including hydro corridors, owned by Hydro One, such as the Finch Hydro Corridor and The Meadowway (also known as the Gatineau Corridor), have been advanced to complement these routes.

The Loop Trail

The Loop Trail is a proposed continuous multi-use trail network of approximately 80 kilometres, connecting the Don and Humber ravines (to the east and west), the Finch Hydro Corridor (to the north), the Martin Goodman Trail (along the waterfront), and the Beltline Trail that cuts through the middle of the city (Figure 1). It supports implementation of the Strategy by enhancing connectivity, access, and engagement within Toronto's ravine system. It is being advanced through a partnership between the

City of Toronto, Toronto and Region Conservation Authority, Evergreen, and the Toronto Foundation.

While much of the route follows existing multi-use trails through parks and hydro corridors, some segments rely on on-road connections. These gaps in the continuous multi-use trail network have been identified through City planning processes, including the Cycling Network Plan and Parks and Recreation capital projects. Addressing these gaps represents an opportunity to improve route continuity, safety, and user experience through a coordinated program of infrastructure improvements delivered by the City and partners, supported by municipal capital funding and partner-led investment. Improvements may include new multi-use trails, improved bike lanes, and improved wayfinding.

When complete, the Loop Trail will connect a wide range of communities, crossing 17 of Toronto's 25 wards and linking dozens of neighbourhoods, including 17 Neighbourhood Investment Areas (NIAs), across the city. The project is partnering with local organizations to establish the first five Hubs along the route. These Hubs will be public spaces designed to support community gathering, cultural programming, and access to food, learning, and nature. They will activate the trail and provide new opportunities for residents and visitors to connect with Toronto's ravine system.

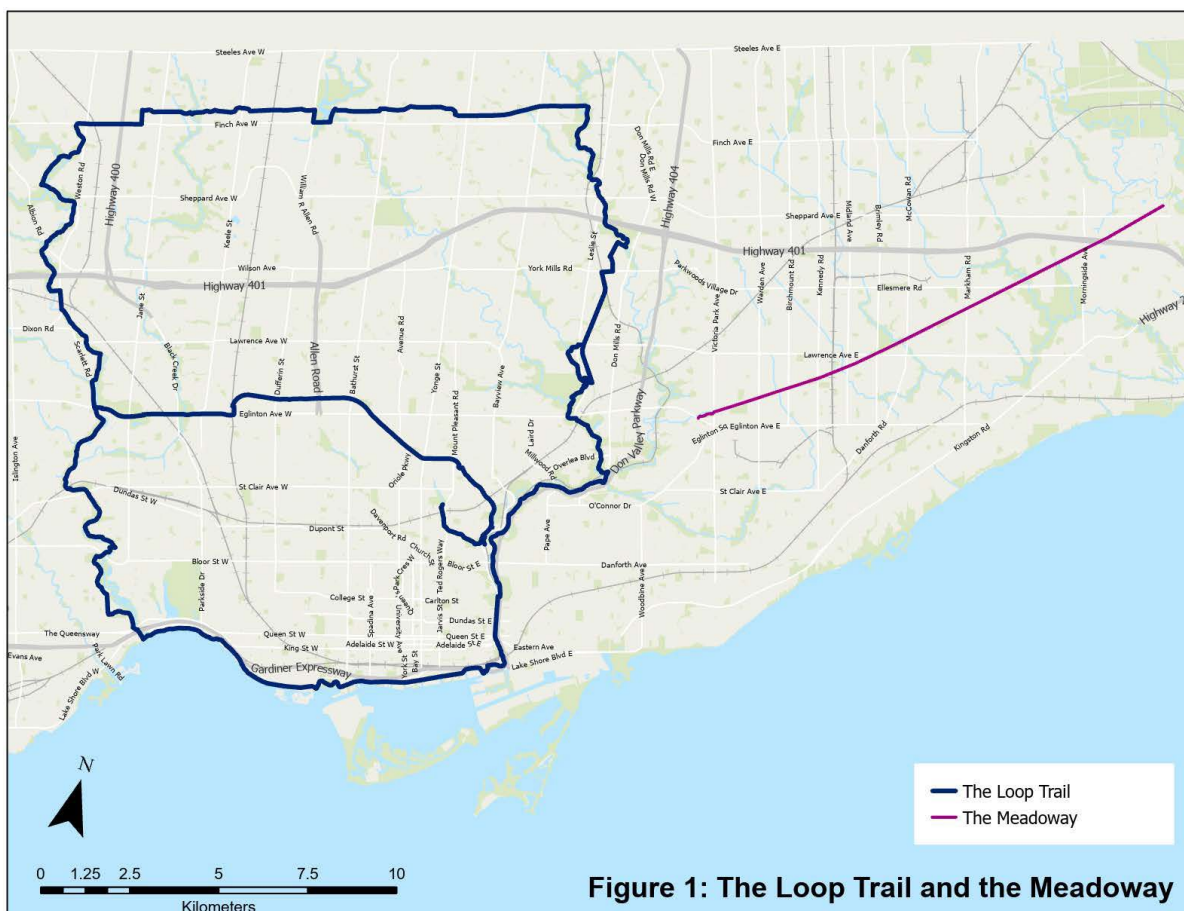


Figure 1: The Loop Trail and the Meadowway

Figure 1: Map of the Loop Trail and The Meadowway

The Meadowway

Once complete, The Meadowway will be a 16-kilometre linear greenspace and multi-use trail located within the Gatineau hydro corridor, connecting the Don River watershed to the Highland Creek and the Rouge National Urban Park (Figure 1). The Meadowway is being advanced by Toronto and Region Conservation Authority with support from the City of Toronto, and the Weston Family Foundation. This corridor has undergone significant ecological restoration, transforming previously maintained turf areas into native meadow habitat.

The Meadowway implementation has completed approximately 80 per cent of the trail and transformed the adjacent corridor into meadow habitat. The remaining 20 per cent of the trail is underway. When complete, The Meadowway will be a critical link between downtown Toronto and Rouge National Urban Park, connecting 15 parks, 13 neighbourhoods and over 150 hectares of meadow habitat.

Current interim connection between the Loop Trail and The Meadowway

The Loop Trail currently follows the Lower and West Don River Trail through the Don Valley, while The Meadowway follows the Gatineau Hydro Corridor from the East Don River to Rouge National Urban Park.

At present, there is no direct multi-use trail connection between these two systems. While the Loop Trail does not extend east toward The Meadowway, users can travel east from the Forks of the Don via the Taylor Creek Trail. The Meadowway is not yet fully constructed, and its current western limit terminates at Eglinton Avenue East.

In advance of the 2015 Pan American Games, an interim connection from the Lower Don Trail to The Meadowway was established through the Pan Am Path project (Figure 2). At that time, The Meadowway trail had only been constructed as far west as Victoria Park Avenue. The Pan Am Path demonstrated how a connection could be achieved using a combination of multi-use trails and on-road segments.

This route was not intended as a long-term solution, as it requires users to navigate stairs at Taylor Creek to Alder Road and include approximately 5 km of on-road route to connect with The Meadowway.

Permanent connection between the Loop Trail and The Meadowway underway

The City of Toronto and Toronto and Region Conservation Authority initiated the East Don Trail Project in 2013, following a feasibility study which examined potential trail alignment options in the East Don Corridor. Further analysis, including an Environmental Assessment, along with extensive public, community liaison and technical stakeholder engagement identified the preferred route of the East Don Trail, which includes a permanent trail connection between the Loop Trail and The Meadowway (Figure 2). The connection from the Loop Trail to The Meadowway provides access between the Lower Don Trail (near the Forks of the Don), the new East Don Trail, then to The Meadowway through the Gatineau Corridor. The East Don Trail and associated

bridge connections will provide a direct route to The Meadoway, reducing the need for stairs and a lengthy on-road section.

The new East Don trail will have a ravine exit at Bermondsey Road across from the hydro corridor (Figure 2). Remaining construction activities for this section of the East Don Trail are anticipated to be completed shortly, with the trail expected to open to the public in summer 2026.

The Meadoway currently terminates at Eglinton Avenue East. A new section of bikeway construction for The Meadoway, in the Gatineau hydro corridor between Bermondsey Road and Eglinton Avenue East, is undergoing detailed design, along with signalized crossings at these major intersections. This is being undertaken by Transportation Services with delivery by Engineering and Construction Services. Construction is scheduled to take place in 2027.

This permanent connection builds on significant planning, technical study, coordination and phased implementation undertaken by the City of Toronto and Toronto and Region Conservation Authority. This connection between The Meadoway and the Loop Trail is anticipated to be completed and open to the public by the end of 2027. Additional opportunities to enhance connectivity within the ravine system may be identified through future planning processes, including potential extensions to the East Don Trail that could further support connections between the Loop Trail and The Meadoway.

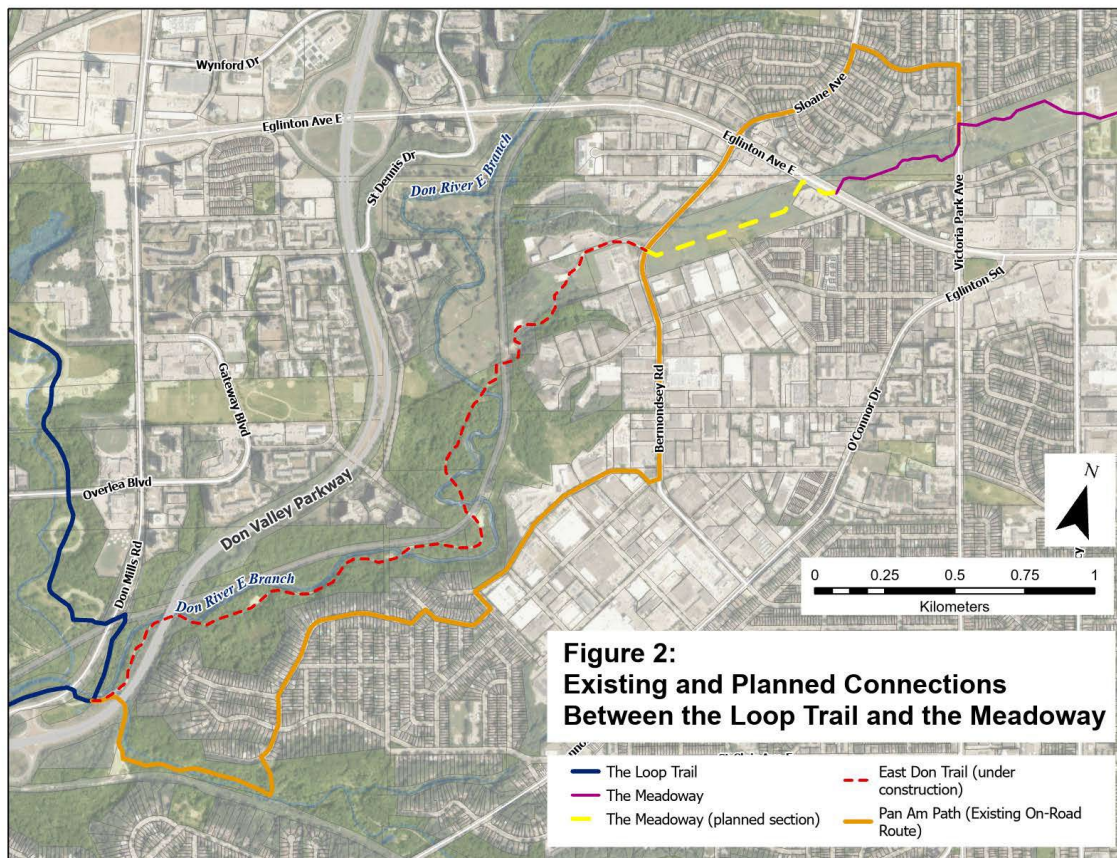


Figure 2: Existing and Planned Connections Between the Loop Trail and The Meadoway.

CONTACT

Kim Statham, Director Urban Forestry, Environment, Climate and Forestry
Tel: 416-392-6478, email: kim.statham@toronto.ca

Jacquelyn Hayward, Director, Strategic Policy and Programs, Strategic Capital
Coordination Office Tel: 416-392-5348, Email: jacquelyn.hayward@toronto.ca

Lisa Turnbull, Associate Director, Professional Services, Toronto and Region
Conservation Authority, Tel:(437) 880-1961, Email: lisa.turnbull@trca.ca

SIGNATURE

James Nowlan
Executive Director, Environment, Climate and Forestry Division