

Traffic Calming (Speed Humps) - Burbank Drive

Date: December 18, 2025

To: North York Community Council

From: Director, Enforcement and Street Management, Transportation Services

Wards: Ward 17, Don Valley North

SUMMARY

This staff report is about a matter that Community Council has delegated authority from City Council to make a final decision.

Transportation Services is recommending the installation of speed humps on Burbank Drive, between Sheppard Avenue East and Forest Grove Drive. Staff's assessment indicates the criteria as set out in the Traffic Calming Policy has been satisfied. Therefore, speed humps OR speed cushions should be installed on Burbank Drive.

RECOMMENDATIONS

The Director, Enforcement and Street Management, Transportation Services recommends that:

1. North York Community Council authorize the installation of traffic calming (16 speed humps) on Burbank Drive, between Sheppard Avenue East and Forest Grove Drive, generally as shown in Attachments 2,3,4, and 5, Drawing Nos. TC-609, TC-609-1, TC-609-2, and TC-609-3, dated October 2025 from the Director, Enforcement and Street Management Transportation Services.
2. Subject to approval of Recommendations 1 above, North York Community Council reduce the speed limit from 40 km/h to 30 km/h on Burbank Drive, between Sheppard Avenue East and Forest Grove Drive, in conjunction with the installation of speed humps.

FINANCIAL IMPACT

The estimated cost for installing 16 speed humps on Burbank Drive is \$64,000. Funding is subject to availability and competing priorities within the Transportation Services 2026 Capital Budget.

DECISION HISTORY

This report addresses a new initiative.

COMMENTS

Transportation Services received a request from the Ward Councillor, on behalf of area residents, to investigate the feasibility of installing speed humps on Burbank Drive, between Sheppard Avenue East and Forest Grove Drive. The residents are concerned that motorists travel at a high rate of speed on Burbank Drive.

Existing Conditions

Burbank Drive is characterized by the following conditions:

- It is a two-lane, north-south collector roadway
- It operates two-way traffic on a pavement width of approximately 11 metres
- The daily two-way traffic volume is approximately 7,000 vehicles
- The speed limit is 40 km/h
- Heavy trucks are prohibited at all times
- There is no Toronto Transit Commission (TTC) service provided
- There is a sidewalk on the east side of the street

The land use in the area consists of detached residential dwellings. This subject section of Burbank Drive is not within designated Community Safety Zone.

A map of the area and proposed locations of the speed humps is included in Attachments 2, 3, 4 and 5.

Study Results

As part of the assessment of the warrant criteria, vehicle speed and volume studies were conducted at on Burbank Drive from October 1 to 3, 2024 at three locations. The study results disclosed the following:

Burbank Drive, between Sheppard Avenue East and Whittaker Crescent (north intersection)

- 24-hour total vehicle volume is 5,232 vehicles
- The block length from Sheppard Avenue East to Citation Drive is 700 metres

- The operating speed, which is the speed at which 85 percent of traffic is travelling at or below, was observed at 49 km/h
- The 95th percentile speed, which is the speed at which 95 percent of traffic is travelling at or below, was observed at 54 km/h

Burbank Drive, between Whittaker Crescent (north intersection) and Hawksbury Drive

- 24-hour total vehicle volume is 6,865 vehicles
- The block length from Sheppard Avenue East to Citation Drive is 700 metres
- The operating speed, which is the speed at which 85 percent of traffic is travelling at or below, was observed at 49 km/h
- The 95th percentile speed, which is the speed at which 95 percent of traffic is travelling at or below, was observed at 53 km/h

Burbank Drive, between Citation Drive and Forest Grove Drive

- 24-hour total vehicle volume is 5,574 vehicles
- The block length from Citation Drive to Forest Grove Drive is 470 metres
- The operating speed, which is the speed at which 85 percent of traffic is travelling at or below, was observed at 50 km/h
- The 95th percentile speed, which is the speed at which 95 percent of traffic is travelling at or below, was observed at 54 km/h

Based on the study results, Burbank Drive has satisfied the warrant criteria for both minimum block length and minimum vehicle speed. The block length was greater than 120 metres and the operating speed is 8 km/h over the warranted speed of 40 km/h.

The overall investigation concluded that the eligibility and warrant criteria as outlined in the updated Traffic Calming Policy has been satisfied. Therefore, staff recommend the installation of speed humps on Burbank Drive.

Relative Priority and Other Impacts

In the event that the number of approved requests for roadway traffic calming measures exceed the budget allocated for installation, funding for approved installations will be prioritized using a Prioritization Score. This score is made up of a Quantitative Score and a Qualitative Score.

The Quantitative Score is based on the results of the data collection, including travel speeds and traffic volumes to prioritize locations with higher vehicle speeds and volumes.

The Qualitative Score includes:

- Collision history to prioritize locations with a history of serious injury or fatal collisions and those involving a pedestrian or person cycling
- Equity to prioritize equity-deserving communities with a high-concentration of priority populations and those that are transportation disadvantaged

- Expected presence of vulnerable road users (elderly population, school children and pedestrians, including transit riders) to prioritize locations with a higher risk of fatal and serious injury collisions

The Quantitative and Qualitative Scores are averaged to provide the complete Prioritization Score. Burbank Drive, between Sheppard Avenue East and Forest Grove Drive, scored 31 ranking points out of a possible 100.

No alterations to parking regulations will be required, nor will the number of parking spaces be affected by the installation of speed humps. Installation of speed humps will have minimal effect on winter services, street cleaning and garbage collection.

Consultation with Emergency Services

Consultation with emergency services (Toronto Police Service, Toronto Fire Services and Toronto Paramedic Services) is required to ensure that the design and layout of a traffic calming proposal does not unduly affect their operations. Emergency services were advised of this proposal.

Toronto Paramedic Services has advised that speed humps will impact response and transport times. A copy of their full response is included in Attachment 6.

Comments have not been received back at the time of writing this report from Toronto Police Service and Toronto Fire Services. Installing speed humps will result in slower operating speeds for all vehicles, including emergency service vehicles.

The Ward Councillor has been advised of the recommendations in this report.

CONTACT

Shawn Dillon, Manager Traffic Operations (Area 2), Transportation Services
416-394-8409, Shawn.Dillon@toronto.ca

SIGNATURE

Mike Barnet., P. Eng.
Director, Enforcement and Street Management, Transportation Services

ATTACHMENTS

Attachment 1: Traffic Calming Warrant - Burbank Drive

Attachment 2: Speed Hump Locations Plan - Burbank Drive, between Sheppard Avenue East and Whittaker Crescent (match line see drawing TC-609-1)

Attachment 3: Speed Hump Locations Plan - Burbank Drive, between Whittaker Crescent and Citation Drive (match line see drawing TC-609-2)

Attachment 4: Speed Hump Locations Plan - Burbank Drive, between Citation Drive and Challister Court (match line see drawing TC-609-3)

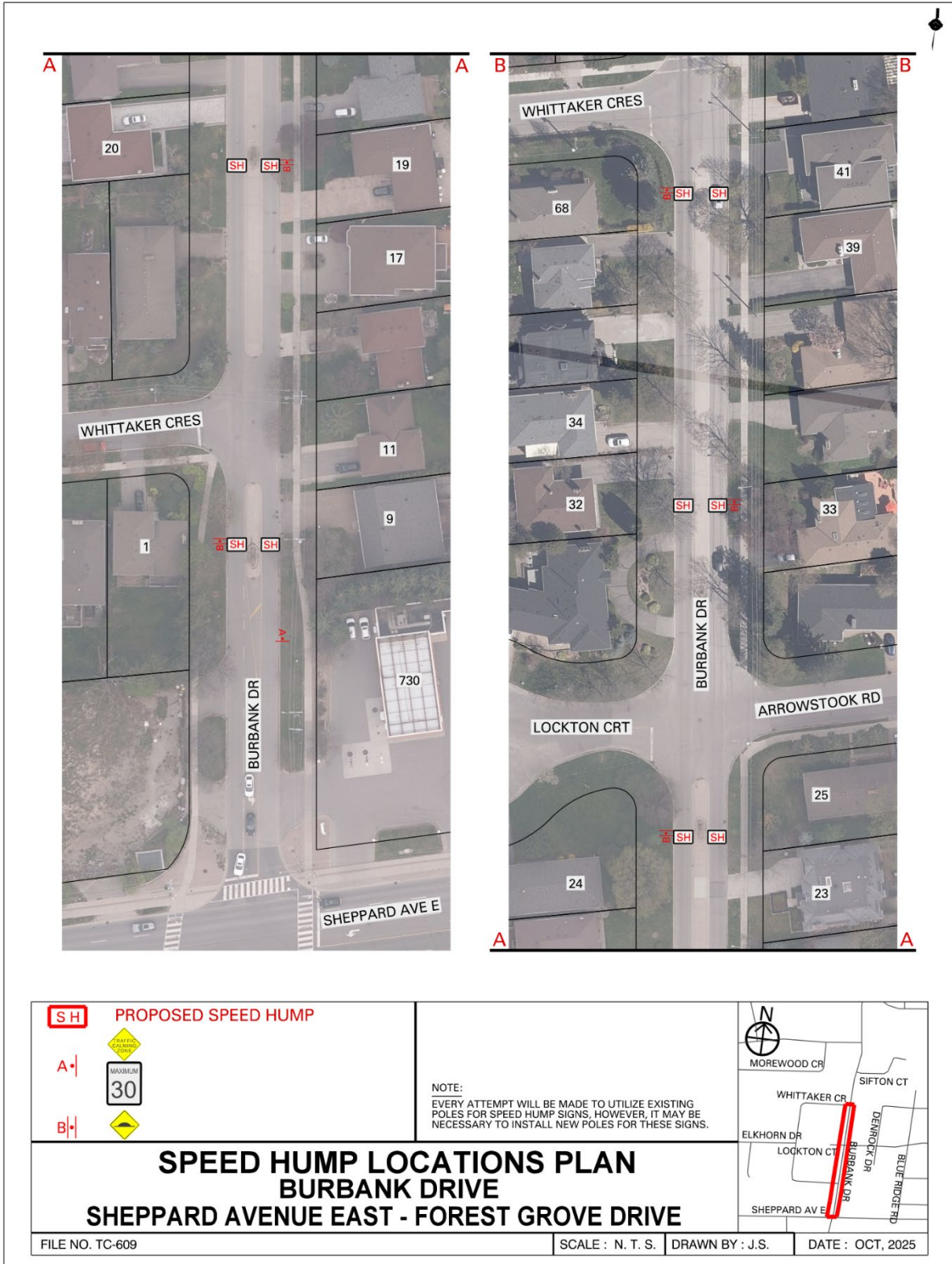
Attachment 5: Speed Hump Locations Plan - Burbank Drive, between Challister Court and Forest Grove Drive

Attachment 6: Email from Toronto Paramedic Services, dated November 4, 2025

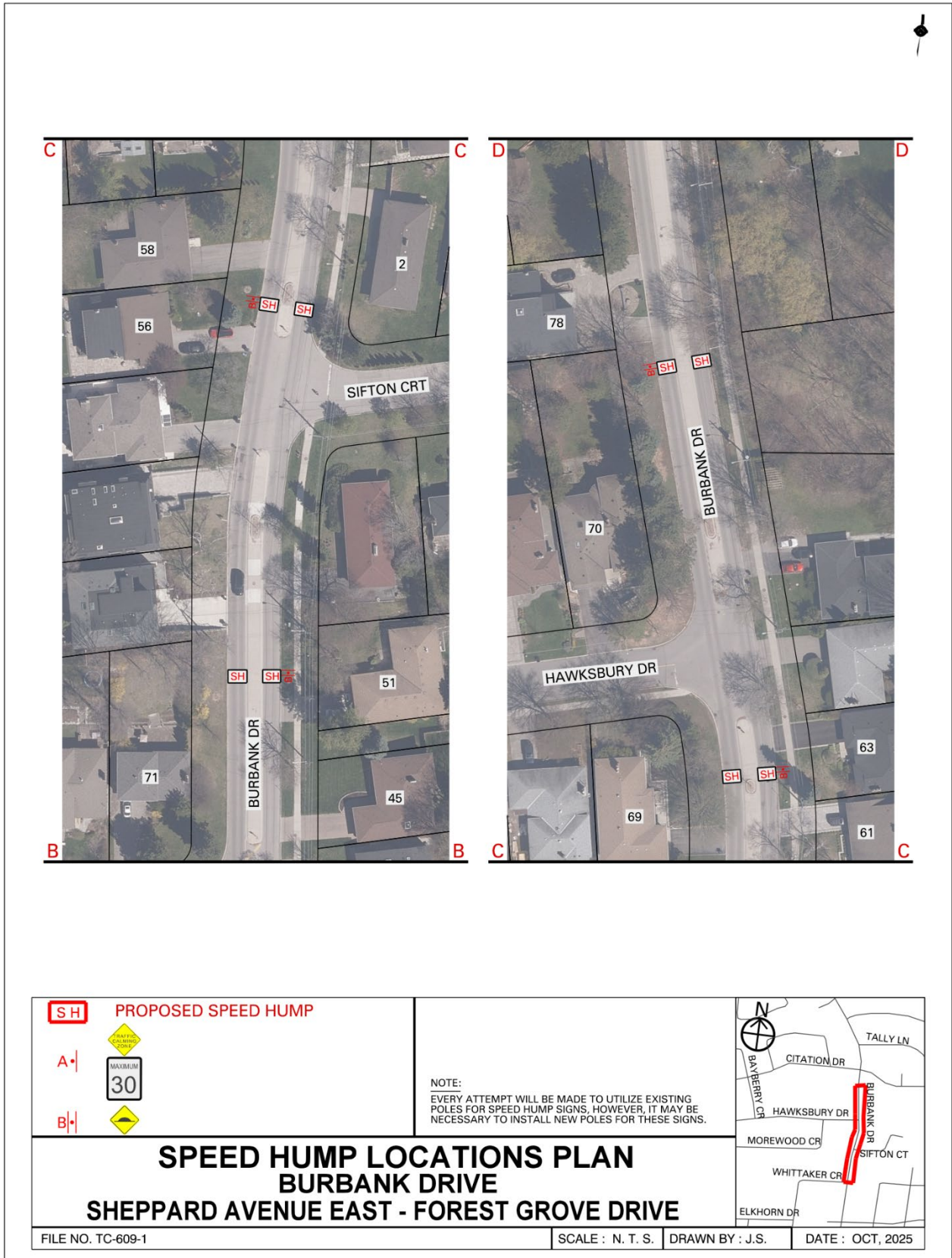
Attachment 1: Traffic Calming Warrant - Burbank Drive

| Criteria | | Requirement | Warrant Satisfied? |
|----------------------|-----------------------|--|--------------------|
| Community Support | | A direct request from the Ward Councillor OR identified by Transportation Services in consultation with the Ward Councillor | Yes |
| Eligibility Criteria | Road Classification | Classified as a local or collector roadway, according to the Toronto Road Classification System | Yes |
| | Sidewalks | Presence of a sidewalk on at least one side of a local roadway and both sides of a collector roadway is preferred but not required | Yes |
| | Traffic Volume | Maximum average daily traffic volume of less than 8,000 vehicles per day | Yes |
| | Road Grade | Maximum roadway grade of up to 5%, can be considered in locations where the road grade is between 5% and 8% with additional review | Yes |
| | Emergency Services | No significant impacts on emergency services, including Toronto Fire, Paramedic and Police Services | Yes |
| | Transit Services | No significant impacts to regularly scheduled Toronto Transit Commission (TTC) services | Yes |
| Warrant Criteria | Minimum Block Length | Minimum block length of 120 metres based on the measured distance from centre to centre of controlled intersections AND | Yes (460) |
| | 85th percentile speed | Minimum 85th percentile speed of 8 km/h over the warranted speed limit OR | Yes (49 km/h) |
| | 95th percentile speed | Minimum 95th percentile speed of 15 km/h over the warranted speed limit | No (53 km/h) |


Attachment 2: Speed Hump Locations Plan - Burbank Drive, between Sheppard Avenue East and Whittaker Crescent (match line see drawing TC-609-1)



Attachment 3: Speed Hump Locations Plan - Burbank Drive, between Whittaker Crescent and Citation Drive (match line see drawing TC-609-2)



SH PROPOSED SPEED HUMP

A-| 

B-| 

B-| 

NOTE:
 EVERY ATTEMPT WILL BE MADE TO UTILIZE EXISTING
 POLES FOR SPEED HUMP SIGNS, HOWEVER, IT MAY BE
 NECESSARY TO INSTALL NEW POLES FOR THESE SIGNS.



**SPEED HUMP LOCATIONS PLAN
 BURBANK DRIVE
 SHEPPARD AVENUE EAST - FOREST GROVE DRIVE**

FILE NO. TC-609-1 SCALE : N. T. S. DRAWN BY : J.S. DATE : OCT, 2025

Attachment 4: Speed Hump Locations Plan - Burbank Drive, between Citation Drive and Challister Court (match line see drawing TC-609-3)



Attachment 5: Speed Hump Locations Plan - Burbank Drive, between Challister Court and Forest Grove Drive



Attachment 6: Email from Toronto Paramedic Services, dated November 4, 2025

RE: Speed Humps - Burbank Drive, between Sheppard Avenue East and Forest Grove Drive



EMS Planning
To: Shawn Dartsch
Cc: Atif Sharif, EMS Planning



Tue 11/04/2025 7:03 PM

Hi Shawn,

We have received and reviewed the proposal for installation of speed humps on Burbank Drive, between Sheppard Avenue East and Forest Grove Drive, with the following comments:

The installation of speed humps on Burbank Drive, between Sheppard Avenue East and Forest Grove Drive, will impact response and transport times for residents that reside on the roadway speed humps are installed. Impacts may extend to community members if Burbank Drive, between Sheppard Avenue East and Forest Grove Drive, serves access to other roadways. It is important that the applicant understands that the installation of traffic calming devices will reduce the speed that emergency vehicles travel when responding to emergencies on roadways where they are installed.

Toronto Paramedic Services is supportive of community initiatives that improve the safety of all citizens of, and visitors to, the City of Toronto. Traffic and pedestrian safety are key components of a healthy neighbourhood, and we endeavour to support the wishes of the community to implement measures to improve upon these components.

