

## **Parking Amendment - Doncliffe Drive**

**Date:** March 13, 2026

**To:** North York Community Council

**From:** Director, Enforcement and Street Management, Transportation Services

**Wards:** Ward 15 - Don Valley West

### **SUMMARY**

---

This staff report is about a matter that Community Council has delegated authority from City Council to make a final decision.

Transportation Services is recommending that parking be prohibited at all times on the north side of Doncliffe Drive, between the east and west intersections with Forest Glen Crescent. Currently parking is allowed for up to three hours (unsigned) on both sides of the Doncliffe Drive, except where parking is prohibited at all times within 45.8 metres of the west intersection with Forest Glen Crescent. Given the 7.2 metre width of Doncliffe Drive, two-way traffic is obstructed when vehicles are parked on both sides of the street. The recommended parking prohibition will address this matter.

### **RECOMMENDATIONS**

---

The Director, Enforcement and Street Management, Transportation Services recommends that:

1. North York Community Council rescind the existing parking prohibition in effect at all times on both sides of Doncliffe Drive, between a point 61.6 metres north of Glen Echo Road and a point 45.8 metres east of Forest Glen Crescent (west intersection)
2. North York Community Council prohibit parking in effect at all times on the south side of Doncliffe Drive, between a point 61.6 metres north of Glen Echo Road and a point 45.8 metres east of Forest Glen Crescent (west intersection)
3. North York Community Council prohibit parking in effect at all times on the north side of Doncliffe Drive, between a point 61.6 metres north of Glen Echo Road and Forest Glen Crescent (east intersection)/Mount Pleasant Road.

## **FINANCIAL IMPACT**

---

The signage costs associated with the proposed amendments are approximately \$500. Funding is available within the Transportation Services 2026 Operating Budget.

## **DECISION HISTORY**

---

This report addresses a new initiative.

## **COMMENTS**

---

The Ward Councillor, on behalf of residents of Doncliffe Drive, requested that parking be prohibited at all times on the north side of Doncliffe Drive to improve traffic flow.

### **Existing Conditions**

Doncliffe Drive is characterized by the following conditions:

- It is a two-lane, east-west local roadway
- It operates two-way traffic on a pavement width of approximately 7.2 metres
- The daily two-way traffic volume is approximately 200 vehicles
- The speed limit is 40 km/h
- Heavy trucks are prohibited at all times
- There is no TTC service provided
- There are sidewalks located on the south side of the street

The unsigned statutory three-hour maximum parking limit is in effect at all times on both sides of Doncliffe Drive, between a point 45.8 metres east of Forest Glen Crescent (west intersection) and Forest Glen Crescent (east intersection)/Mount Pleasant Road. Parking is prohibited at all times on both sides of Doncliffe Drive, between Forest Glen Crescent (west intersection) and a point 45.8 metres east.

### **Proposed Changes**

Given the 7.2 metre width of Doncliffe Drive, two-way traffic is obstructed when vehicles are parked on both sides of the street. Prohibiting parking at all times on the north side of Doncliffe Drive, between the east and west intersections of Forest Glen Crescent, would address this matter.

A map of the area and proposed parking amendment is included in Attachment 1.

The Ward Councillor has been advised of the recommendation of this staff report.

## **CONTACT**

---

Shawn Dillon, Manager Traffic Operations (Area 2), Transportation Services, 416-394-8409, [Shawn.Dillon@toronto.ca](mailto:Shawn.Dillon@toronto.ca)

## **SIGNATURE**

---

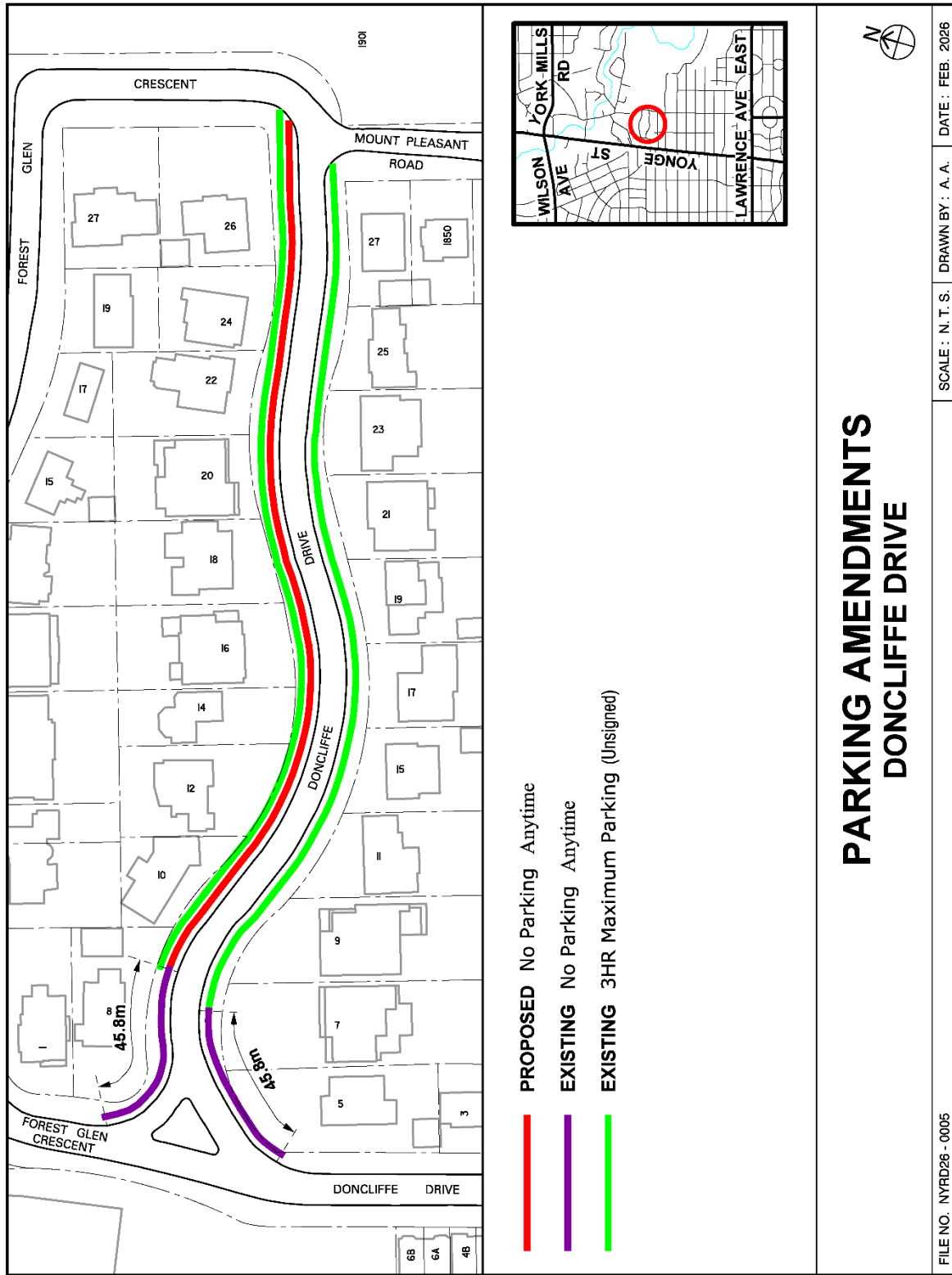
Mike Barnet, P. Eng.  
Director, Enforcement and Street Management, Transportation Services

## **ATTACHMENTS**

---

Attachment 1: Map - Parking Amendment - Doncliffe Drive

Attachment 1: Map - Parking Amendment - Doncliffe Drive



**PARKING AMENDMENTS  
DONCLIFFE DRIVE**