

Traffic Calming (Speed Humps) - Francine Drive

Date: April 13, 2026

To: North York Community Council

From: Director, Enforcement and Street Management, Transportation Services

Wards: Ward 17, Don Valley North

SUMMARY

This staff report is about a matter that Community Council has delegated authority from City Council to make a final decision.

Transportation Services is recommending the installation of speed humps on Francine Drive, between Zircon Court and Janus Court. Staff's assessment indicates the criteria as set out in the Traffic Calming Policy has been satisfied. Therefore, speed humps should be installed on Francine Drive.

RECOMMENDATIONS

The Director, Enforcement and Street Management, Transportation Services recommends that:

1. North York Community Council authorize the installation of traffic calming (eight speed humps) on Francine Drive, between Zircon Court and Janus Court, generally as shown in Attachment 2 and 3, Drawing No. TC-669 and TC-669-1 respectively, dated March 2026, from the Director, Enforcement and Street Management, Transportation Services.

FINANCIAL IMPACT

The estimated cost for installing 8 speed humps on Francine Drive is \$32,000. Funding is subject to availability and competing priorities within the Transportation Services 2026 Capital Budget.

DECISION HISTORY

This report addresses a new initiative.

COMMENTS

Transportation Services received a request from the Ward Councillor, on behalf of area residents, to investigate the feasibility of installing speed humps on Francine Drive, between Zircon Court and Janus Court. The residents are concerned that motorists travel at a high rate of speed on Francine Drive.

Existing Conditions

Francine Drive is characterized by the following conditions:

- It is a two-lane, east-west and north-south local roadway
- It operates two-way traffic on a pavement width of approximately 8.5 metres
- The daily two-way traffic volume is approximately 1,100 vehicles
- The speed limit is 30 km/h
- There is no Toronto Transit Commission (TTC) service provided
- There are sidewalks on both sides of the street

The land use in the area consists of detached residential dwellings. A.Y Jackson Public Secondary School is located on the south side of the street. This subject section of Francine Drive is within designated Community Safety Zone.

A map of the area and proposed locations of the speed humps is included in Attachments 2 and 3.

Study Results

As part of the assessment of the warrant criteria, a vehicle speed and volume study was conducted on Francine Drive, between Zircon Court and Janus Court from October 7, 2025 to October 9, 2025.

The study results on Francine Drive disclosed the following:

- 24-hour total vehicle volume of 1095 vehicles
- The distance between Zircon Court and Janus Court is 600 metres
- The operating speed, which is the speed at which 85 percent of traffic is travelling at or below, was observed at 42 km/h
- The 95th percentile speed, which is the speed at which 95 percent of traffic is travelling at or below, was observed at 48 km/h

Based on the study results, Francine Drive has satisfied the traffic calming warrant criteria. The block length is greater than 120 metres and the operating speed is more than 8 km/h over the warranted speed of 30 km/h and the 95th percentile speed is more than 15 km/h over the speed limit.

The overall investigation concluded that the eligibility and warrant criteria as outlined in the updated Traffic Calming Policy has been satisfied. Therefore, staff recommend the installation of speed humps on Francine Drive.

Relative Priority and Other Impacts

In the event that the number of approved requests for roadway traffic calming measures exceed the budget allocated for installation, funding for approved installations will be prioritized using a Prioritization Score. This score is made up of a Quantitative Score and a Qualitative Score.

The Quantitative Score is based on the results of the data collection, including travel speeds and traffic volumes to prioritize locations with higher vehicle speeds and volumes.

The Qualitative Score includes:

- Collision history to prioritize locations with a history of serious injury or fatal collisions and those involving a pedestrian or person cycling
- Equity to prioritize equity-deserving communities with a high-concentration of priority populations and those that are transportation disadvantaged
- Expected presence of vulnerable road users (elderly population, school children and pedestrians, including transit riders) to prioritize locations with a higher risk of fatal and serious injury collisions

The Quantitative and Qualitative Scores are averaged to provide the complete Prioritization Score. Francine Drive, between Zircon Court and Janus Court, scored 31 ranking points out of a possible 100.

No alterations to parking regulations will be required, nor will the number of parking spaces be affected by the installation of speed humps. Installation of speed humps will have minimal effect on winter services, street cleaning and garbage collection.

Consultation with Emergency Services

Consultation with emergency services (Toronto Police Service, Toronto Fire Services and Toronto Paramedic Services) is required to ensure that the design and layout of a traffic calming proposal does not unduly affect their operations. Emergency services were advised of this proposal.

Toronto Paramedic Services has advised that speed humps will impact response and transport times. A copy of their full response is included in Attachment 4.

Comments have not been received back at the time of writing this report from Toronto Police Service or Toronto Fire Services. Installing speed humps will result in slower operating speeds for all vehicles, including emergency service vehicles.

The Ward Councillor has been advised of the recommendations in this report.

CONTACT

Shawn Dillon, Manager Traffic Operations (Area 2), Transportation Services
416-394-8409, Shawn.Dillon@toronto.ca

SIGNATURE

Mike Barnet., P. Eng.
Director, Enforcement and Street Management, Transportation Services

ATTACHMENTS

Attachment 1: Traffic Calming Warrant - Francine Drive

Attachment 2: Speed Hump Locations Plan - Francine Drive, between Zircon Court and Janus Court (match line see drawing TC-669)

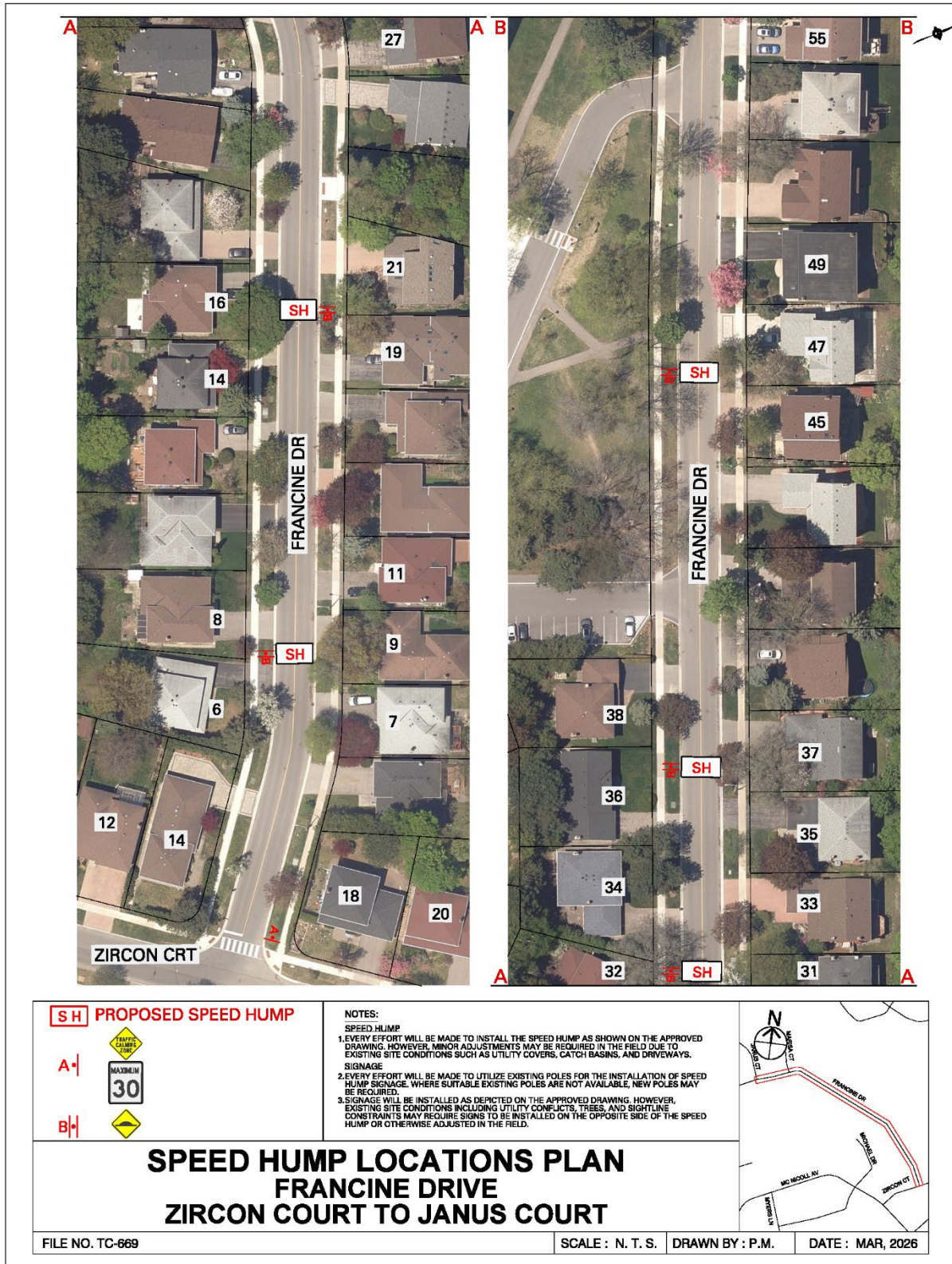
Attachment 3: Speed Hump Locations Plan - Francine Drive, between Zircon Court and Janus Court (match line see drawing TC-669-1)

Attachment 4: Email from Toronto Paramedic Services, dated March 31, 2026

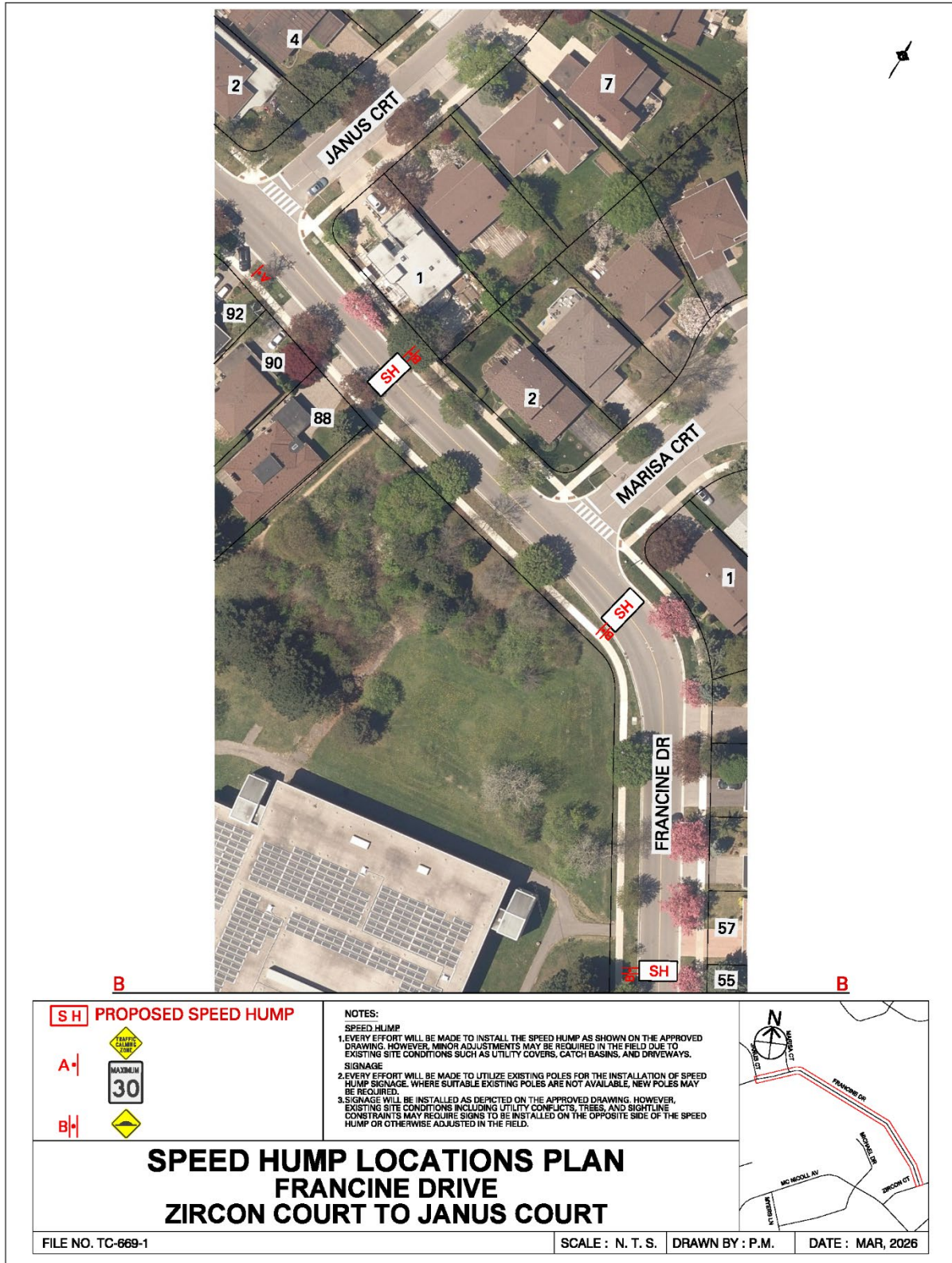
Attachment 1: Traffic Calming Warrant - Francine Drive, between Zircon Court and Janus Court

Criteria		Requirement	Warrant Satisfied?
Community Support		A direct request from the Ward Councillor OR identified by Transportation Services in consultation with the Ward Councillor	Yes
Eligibility Criteria	Road Classification	Classified as a local or collector roadway, according to the Toronto Road Classification System	Yes
	Sidewalks	Presence of a sidewalk on at least one side of a local roadway and both sides of a collector roadway is preferred but not required	Yes
	Traffic Volume	Maximum average daily traffic volume of less than 8,000 vehicles per day	Yes
	Road Grade	Maximum roadway grade of up to 5%, can be considered in locations where the road grade is between 5% and 8% with additional review	Yes
	Emergency Services	No significant impacts on emergency services, including Toronto Fire, Paramedic and Police Services	Yes
	Transit Services	No significant impacts to regularly scheduled Toronto Transit Commission (TTC) services	N/A
Warrant Criteria	Minimum Block Length	Minimum block length of 120 metres based on the measured distance from centre to centre of controlled intersections AND	Yes 200 m
	85th percentile speed	Minimum 85th percentile speed of 8 km/h over the warranted speed limit OR	Yes (42 km/h)
	95th percentile speed	Minimum 95th percentile speed of 15 km/h over the warranted speed limit	Yes (48 km/h)

Attachment 2: Speed Hump Locations Plan - Francine Drive, between Zircon Court and Janus Court (match line see drawing TC-669)



Attachment 3: Speed Hump Locations Plan - Francine Drive, between Zircon Court and Janus Court (match line see drawing TC-669-1)



Attachment 4: Email from Toronto Paramedic Services, dated March 31, 2026

FW: Speed Humps - Francine Drive, between Zircon Court and Janus Court



Farhad Awabin
To: Shawn Dartsch



Wed 03/25/2026 9:57 PM

FYI

From: EMS Planning <emsplanning@toronto.ca>
Sent: March 25, 2026 7:27 PM
To: Farhad Awabin <Farhad.Awabin@toronto.ca>
Cc: EMS Planning <emsplanning@toronto.ca>
Subject: RE: Speed Humps - Francine Drive, between Zircon Court and Janus Court

Hi Farhad,

We have received and reviewed the proposal for installation of speed humps on Francine Drive, between Zircon Court and Janus Court, with the following comments:

The installation of speed humps on Francine Drive, between Zircon Court and Janus Court, will impact response and transport times for residents that reside on the roadway speed humps are installed. Impacts may extend to community members if Francine Drive, between Zircon Court and Janus Court, serves access to other roadways. It is important that the applicant understands that the installation of traffic calming devices will reduce the speed that emergency vehicles travel when responding to emergencies on roadways where they are installed.

Toronto Paramedic Services is supportive of community initiatives that improve the safety of all citizens of, and visitors to, the City of Toronto. Traffic and pedestrian safety are key components of a healthy neighbourhood, and we endeavour to support the wishes of the community to implement measures to improve upon these components.

