

## **Metrolinx Yonge North Subway Extension – Long-Term Temporary Road Closures, Time Extension of the Temporary Delegation of Authority**

**Date:** May 7, 2026

**To:** North York Community Council

**From:** Interim Deputy General Manager, Transportation Services

**Wards:** Ward 18 - Willowdale

### **SUMMARY**

---

This report provides an overview of Metrolinx’s planned construction activities for the Yonge North Subway Extension (YNSE) Steeles Station at the intersection of Yonge Street and Steeles Avenue. The report outlines the key construction stages, anticipated timelines, and associated long-term temporary lane closures, turning restrictions, pedestrian and cycling impacts, transit adjustments, and access considerations required to facilitate construction.

Construction of Steeles Station requires excavation of a large underground station box within the existing Yonge Street right-of-way. Due to the scale and location of the work, it is not feasible to maintain traffic operations within the existing roadway during key stages of construction. To maintain north-south connectivity, Yonge Street will be temporarily realigned onto a newly constructed diversion road west of its existing alignment. Following implementation of the diversion road, Yonge Street, between Steeles Avenue and Madawaska Avenue, will be fully closed to vehicular traffic during the main construction phase.

This report seeks City Council approval for the temporary full closure of Yonge Street, the temporary designation of the diversion road as a public highway and associated temporary traffic and pedestrian by-law amendments required to support construction of Steeles Station.

In addition, this report seeks to extend the delegated authority of the General Manager, Transportation Services, to implement long-term temporary road closures and associated traffic modifications to December 31, 2030, to allow flexibility to respond to refinements in construction staging and scheduling without the need for subsequent reports to Council.

Approval of the recommendations in this report will enable Metrolinx to proceed with critical construction activities while ensuring that impacts to the transportation network, local communities, and road users are effectively managed through coordinated traffic control, access management, and construction mitigation measures.

## RECOMMENDATIONS

---

The Interim Deputy General Manager, Transportation Services recommends that:

### Steeles Station:

Public Laneway (Ln E Yonge S Steeles):

1. City Council approve the temporary closure of the public laneway (Ln E Yonge S Steeles), between Steeles Avenue and Nipigon Avenue, from June 25, 2027 to July 22, 2030, inclusive, to facilitate construction of the Steeles Station as part of the Yonge North Subway Extension.

Yonge Street Detour Road:

2. City Council authorize public highway designation and dedicate the lands, described as Parts 1, 2, 5, 7, 8, and 9 on Reference Plan 66R-34930, being part of PIN 10139-0289 (LT) set out as Attachment 1 of the report (May 7, 2026), to be known as “Yonge Street Diversion Road”, to become effective upon the transfer to the City of the required interest in lands forming the diversion road and the registration of the highway dedication bylaw on those lands.

3. City Council authorize public highway designation and dedicate the lands, described as Part 1 on Reference Plan 66R-34927, being part of PIN 10139-0230 (LT) set out as Attachment 2 of the report (May 7, 2026), to be known as “Yonge Street Diversion Road”, to become effective upon the transfer to the City of the required interest in lands forming the diversion road and the registration of the highway dedication bylaw on those lands.

4. City Council authorize public highway designation and dedicate the lands, described as Part 1 on Reference Plan 66R-34408, being part of PIN 10139-0230 (LT) set out as Attachment 3 of the report (May 7, 2026), to be known as “Yonge Street Diversion Road”, to become effective upon the transfer to the City of the required interest in lands forming the diversion road and the registration of the highway dedication bylaw on those lands.

5. City Council prohibit stopping on both sides of the Yonge Street Diversion Road, between Steeles Avenue and Madawaska Avenue, from September 12, 2028 to July 22, 2030, inclusive, to facilitate construction of the Steeles Station as part of the Yonge North Subway Extension.

6. City Council authorize the installation of temporary traffic control signals at the intersection of Yonge Street Diversion Road and Athabaska Avenue, from December 10, 2026 to July 22, 2030, inclusive, to facilitate construction of the Steeles Station as part of the Yonge North Subway Extension.

7. City Council designate a 40 km/h speed limit on Yonge Street Diversion Road, between Steeles Avenue and Madawaska Avenue, from September 12, 2028 to July

22, 2030, inclusive, to facilitate construction of the Steeles Station as part of the Yonge North Subway Extension.

Yonge Street:

8. City Council designate a 40 km/h speed limit on Yonge Street, between Steeles Avenue and Madawaska Avenue, from June 25, 2027 to September 11, 2028, inclusive, to facilitate construction of the Steeles Station as part of the Yonge North Subway Extension.

9. City Council prohibit stopping at all times on both sides of Yonge Street, between Steeles Avenue and Madawaska Avenue, from June 25, 2027 to September 11, 2028, inclusive, to facilitate construction of the Steeles Station as part of the Yonge North Subway Extension.

10. City Council approve the temporary closure of the west sidewalk to pedestrian traffic on Yonge Street, between Madawaska Avenue and Athabaska Avenue, from December 10, 2026 to June 24, 2027, inclusive, to facilitate construction of the Steeles Station as part of the Yonge North Subway Extension.

11. City Council approve the temporary closure of the west sidewalk to pedestrian traffic on Yonge Street, between Nipigon Avenue and Athabaska Avenue, from June 25, 2027 to January 19, 2028, inclusive, to facilitate construction of the Steeles Station as part of the Yonge North Subway Extension.

12. City Council approve the temporary closure of the west sidewalk to pedestrian traffic on Yonge Street, between Steeles Avenue and Athabaska Avenue, from January 20, 2028 to September 11, 2028, inclusive, to facilitate construction of the Steeles Station as part of the Yonge North Subway Extension.

13. City Council approve the temporary closure of the east sidewalk to pedestrian traffic on Yonge Street, between Abitibi Avenue and Otonabee Avenue, from September 12, 2028 to March 16, 2029, inclusive, to facilitate construction of the Steeles Station as part of the Yonge North Subway Extension.

14. City Council authorize the temporary closure of the existing easterly northbound and westerly southbound reserved lanes to vehicular traffic on Yonge Street, between Steeles Avenue and Madawaska Avenue, from June 25, 2027 to September 11, 2028, inclusive, to facilitate construction of the Steeles Station as part of the Yonge North Subway Extension.

15. City Council approve the temporary closure of the east crosswalk to pedestrian traffic on Yonge Street at Athabaska Avenue, from September 12, 2028 to March 16, 2029, inclusive, to facilitate construction of the Steeles Station as part of the Yonge North Subway Extension.

16. City Council approve the temporary closure of the northbound and southbound curb lanes to vehicular traffic on Yonge Street, between Steeles Avenue and Madawaska

Avenue, from June 25, 2027 to September 11, 2028, inclusive, to facilitate construction of the Steeles Station as part of the Yonge North Subway Extension.

17. City Council approve the temporary full closure to vehicular traffic on Yonge Street, between Steeles Avenue and Madawaska Avenue, from September 12, 2028 to July 22, 2030, inclusive, to facilitate construction of the Steeles Station as part of the Yonge North Subway Extension.

18. City Council prohibit northbound left-turn movement at the intersection of Yonge Street and Athabaska Avenue, from June 25, 2027 to January 19, 2028, inclusive, to facilitate construction of the Steeles Station as part of the Yonge North Subway Extension.

19. City Council prohibit northbound right-turn, southbound left-turn and eastbound through traffic movements at the intersection of Yonge Street and Athabaska Avenue, from September 12, 2028 to March 16, 2029, to facilitate construction of the Steeles Station as part of the Yonge North Subway Extension.

20. City Council prohibit westbound right-turns on red signal at the intersection of Yonge Street and Athabaska Avenue, from June 25, 2027 to March 16, 2029, inclusive, to facilitate construction of the Steeles Station as part of the Yonge North Subway Extension.

Yonge Street and Steeles Avenue:

21. City Council authorize the alteration of the south-west corner of Yonge Street and Steeles Avenue, to remove the east-to-southbound right-turn channel.

22. City Council approve the temporary closure of the south crosswalk to pedestrian traffic on Yonge Street at Steeles Avenue, from June 25, 2027 to March 16, 2029, inclusive, to facilitate construction of the Steeles Station as part of the Yonge North Subway Extension.

23. City Council prohibit eastbound, westbound, northbound, and southbound right-turns on red signal at the intersection of Yonge Street and Steeles Avenue, from June 25, 2027 to September 11, 2028, inclusive, to facilitate construction of the Steeles Station as part of the Yonge North Subway Extension.

Side Streets:

24. City Council approve the temporary closure to vehicular traffic on Nipigon Avenue at Yonge Street, from September 12, 2028 to July 22, 2030, inclusive, to facilitate construction of the Steeles Station as part of the Yonge North Subway Extension.

25. City Council approve the temporary closure to vehicular traffic on Abitibi Avenue at Yonge Street, from September 12, 2028 to July 22, 2030, inclusive, to facilitate construction of the Steeles Station as part of the Yonge North Subway Extension.

26. City Council approve the temporary closure to vehicular traffic on Otonabee Avenue at Yonge Street, from September 12, 2028 to July 22, 2030, inclusive, to facilitate construction of the Steeles Station as part of the Yonge North Subway Extension.

27. City Council approve the temporary closure to vehicular traffic on Athabaska Avenue at Yonge Street, from September 12, 2028 to March 16, 2029, inclusive, to facilitate construction of the Steeles Station as part of the Yonge North Subway Extension.

Steeles Avenue:

28. City Council approve the temporary closure of the westbound right-turn lane to vehicular traffic on Steeles Avenue, between Yonge Street and a point approximately 85 metres, from June 25, 2027 to September 11, 2028, inclusive, to facilitate construction of the Steeles Station as part of the Yonge North Subway Extension.

29. City Council approve the temporary closure of the westbound curb lane to vehicular traffic on Steeles Avenue, between a point approximately 200 metres west of Yonge Street and a point approximately 150 metres east of Yonge Street, from June 25, 2027 to March 16, 2029, inclusive, to facilitate construction of the Steeles Station as part of the Yonge North Subway Extension.

30. City Council approve the temporary closure of the westbound median lane to vehicular traffic on Steeles Avenue, between Yonge Street and a point approximately 85 metres west of Yonge Street, from June 25, 2027 to March 16, 2029, inclusive, to facilitate construction of the Steeles Station as part of the Yonge North Subway Extension.

31. City Council approve the temporary closure of the eastbound curb lane to vehicular traffic on Steeles Avenue, between a point approximately 305 metres west of Yonge Street and a point approximately 150 metres east of Yonge Street, from June 25, 2027 to March 16, 2029, inclusive, to facilitate construction of the Steeles Station as part of the Yonge North Subway Extension.

32. City Council approve the temporary closure of the eastbound median lane to vehicular traffic on Steeles Avenue, between Yonge Street and a point approximately 200 metres west of Yonge Street, from June 25, 2027 to March 16, 2029, inclusive, to facilitate construction of the Steeles Station as part of the Yonge North Subway Extension.

33. City Council approve the temporary closure of the two-way left-turn only lane to vehicular traffic on Steeles Avenue, between a point approximately 125 metres west of Yonge Street and a point approximately 180 metres further west, from June 25, 2027 to March 16, 2029, inclusive, to facilitate construction of the Steeles Station as part of the Yonge North Subway Extension.

34. City Council designate a 40 km/h speed limit on Steeles Avenue, between Dumont Street and a point 360 metres west of Yonge Street, from June 25, 2027 to March 16,

2029, inclusive, to facilitate construction of the Steeles Station as part of the Yonge North Subway Extension.

35. City Council prohibit stopping on Steeles Avenue, between Dumont Street and a point 360 metres west of Yonge Street, from June 25, 2027 to March 16, 2029, to facilitate construction of the Steeles Station as part of the Yonge North Subway Extension.

General:

36. City Council authorize the appropriate City officials to take all steps necessary to implement the proposed dedications referred to in Recommendations 2, 3, and 4 above, including requesting the City solicitor to prepare and submit the relevant Bills and to pay any costs necessary to register the resultant by-laws, if required.

37. City Council authorize the General Manager, Transportation Services, to negotiate, enter into and execute an agreement with Metrolinx on terms and conditions satisfactory to the General Manager, Transportation Services, in relation to, among other things, the construction, maintenance, and warranty work of the diversion road, as well as to negotiate, enter into and execute any necessary agreements and documents, and take steps and measures necessary, on behalf of the City, to temporarily exercise the City's authority.

38. City Council authorize the General Manager, Transportation Services, in issuing any requisite permits to include additional permit terms and conditions as the General Manager, Transportation Services deems necessary and appropriate.

39. City Council authorize the appropriate City officials to submit directly to City Council at the appropriate time any necessary Bills to amend the appropriate City of Toronto Municipal Code and/or Chapters, and any Schedules to the Chapters, to reinstate the traffic and parking regulations to what they were immediately prior to the by-law amendments made in connection with the report (May 7, 2026) from the Interim Deputy General Manager, Transportation Services.

40. City Council authorize the appropriate City officials to submit directly to City Council at the appropriate time any necessary Bills to amend the effective date of any dedication by-law(s) and/or traffic and parking by-law(s) made in connection with the report (May 7, 2026) from the Interim Deputy General Manager, Transportation Services to, among other things, insert a specific effective date, in order to give effect to Recommendations 1 to 35, inclusive, above.

41. City Council authorize the City Solicitor to introduce the necessary Bills to give effect to City Council's decision and City Council authorize the City Solicitor to make any necessary clarifications, refinements, minor modifications, technical amendments, or by-law amendments as may be identified by the City Solicitor or the General Manager, Transportation Services in order to give effect to Recommendations 1 to 40, inclusive, above.

## FINANCIAL IMPACT

---

There is no financial impact to the City. Metrolinx and its contractors are responsible for all costs, including payment of fees to the City for occupancy of the road right-of-way.

## DECISION HISTORY

---

City Council, at its meeting on May 11 and 12, 2022, adopted Item 2022.IE.29.5 “Metrolinx Yonge North Subway Extension Early Works and temporary Delegation for Long-term Road Closures; Eglinton Crosstown Light Rail Transit Extension of the Temporary Delegation for Long-term Road Closures” and approved temporary road closures required for early work as part of the Yonge North Subway Extension project. Additionally, City Council delegated to the General Manager, Transportation Services, the authority to temporarily close to pedestrian and vehicular traffic highways or portion of highways for a period up to and including 365 consecutive days, until December 31, 2026.

<https://secure.toronto.ca/council/agenda-item.do?item=2022.IE29.5>

## COMMENTS

---

Metrolinx’s Yonge North Subway Extension (YNSE) project is a planned 7.4-kilometre extension of the TTC Subway Line 1 from its current location at Finch Station in the City of Toronto to High Tech Station in Richmond Hill. It is a cross-jurisdictional project that will span the City of Toronto and York Region. Figure 1 shows the YNSE route alignment with locations of the stations and emergency exit buildings (EEBs).

Tunnelling for the YNSE is currently underway as part of the Advanced Tunnelling Contract. Metrolinx’s tunnelling contractor, North End Connectors (NEC), is actively operating the tunnel boring machine (TBM) from the launch shaft site located at the north end of the project in the City of Richmond Hill. Beginning in 2027, construction is anticipated to advance to major surface works, including the Steeles Station and Finch Transition Structure.

In 2022, City Council, through Item IE29.5, approved the long-term temporary lane closures required to support early works for the Yonge North Subway Extension project, and authorized a temporary delegation of authority to the General Manager, Transportation Services, to implement long-term temporary road closures.

This report builds on that approval and seeks to:

- Extend the temporary delegation of authority to December 31, 2030; and
- Obtain City Council approval for additional long-term temporary road closures, traffic by-law amendments, and a temporary Yonge Street diversion required to support the next phase of construction for the Steeles Station.

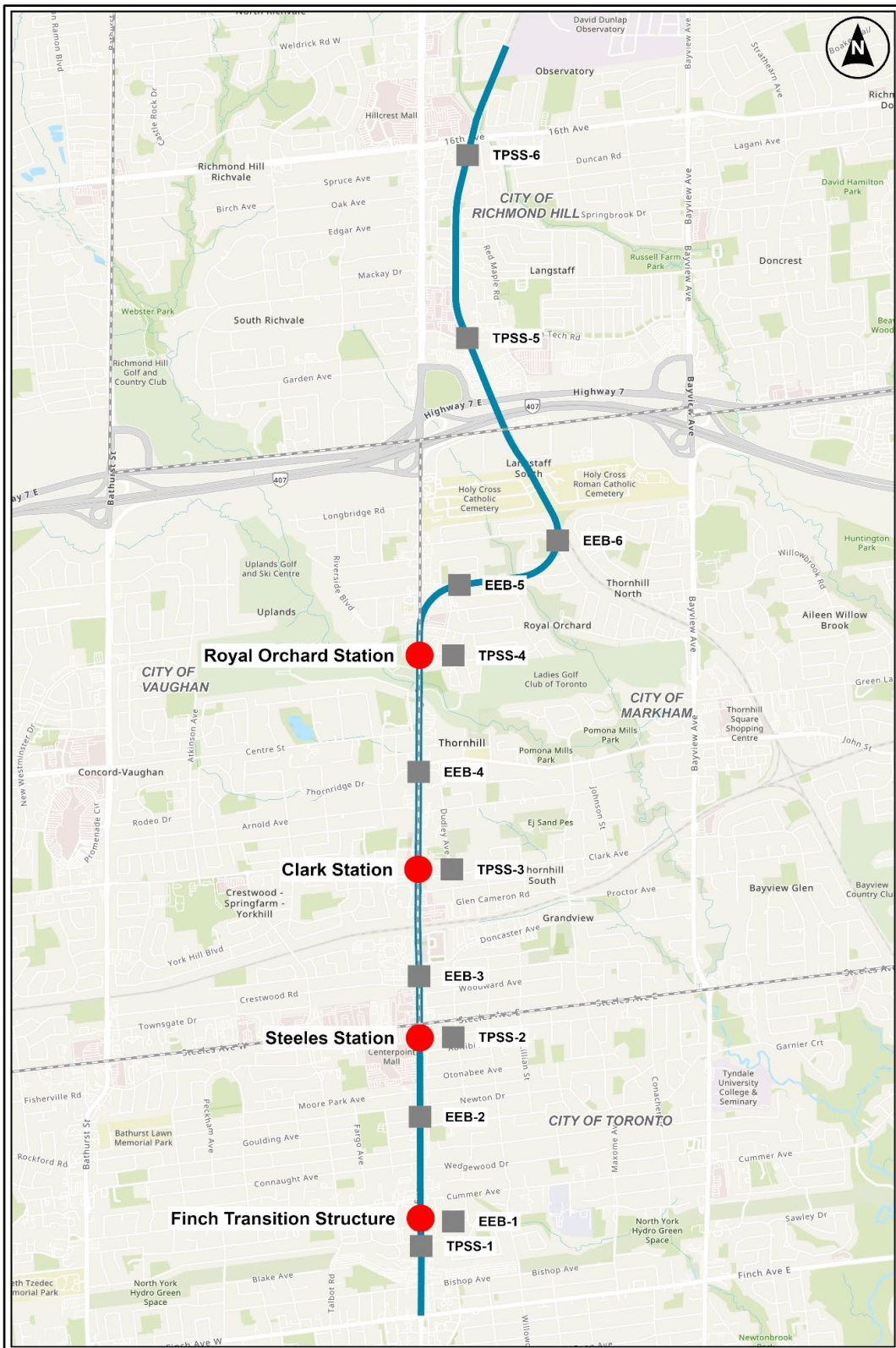


Figure 1 – YNSE Alignment

Source: Metrolinx

## Steeles Station:

The YNSE Steeles Station will be located in the south-west quadrant of the intersection of Steeles Avenue and Yonge Street and will serve as a major transit interchange, including a new subway station, bus terminal, and associated infrastructure. Figure 2 shows the station location with respect to the surrounding road network.

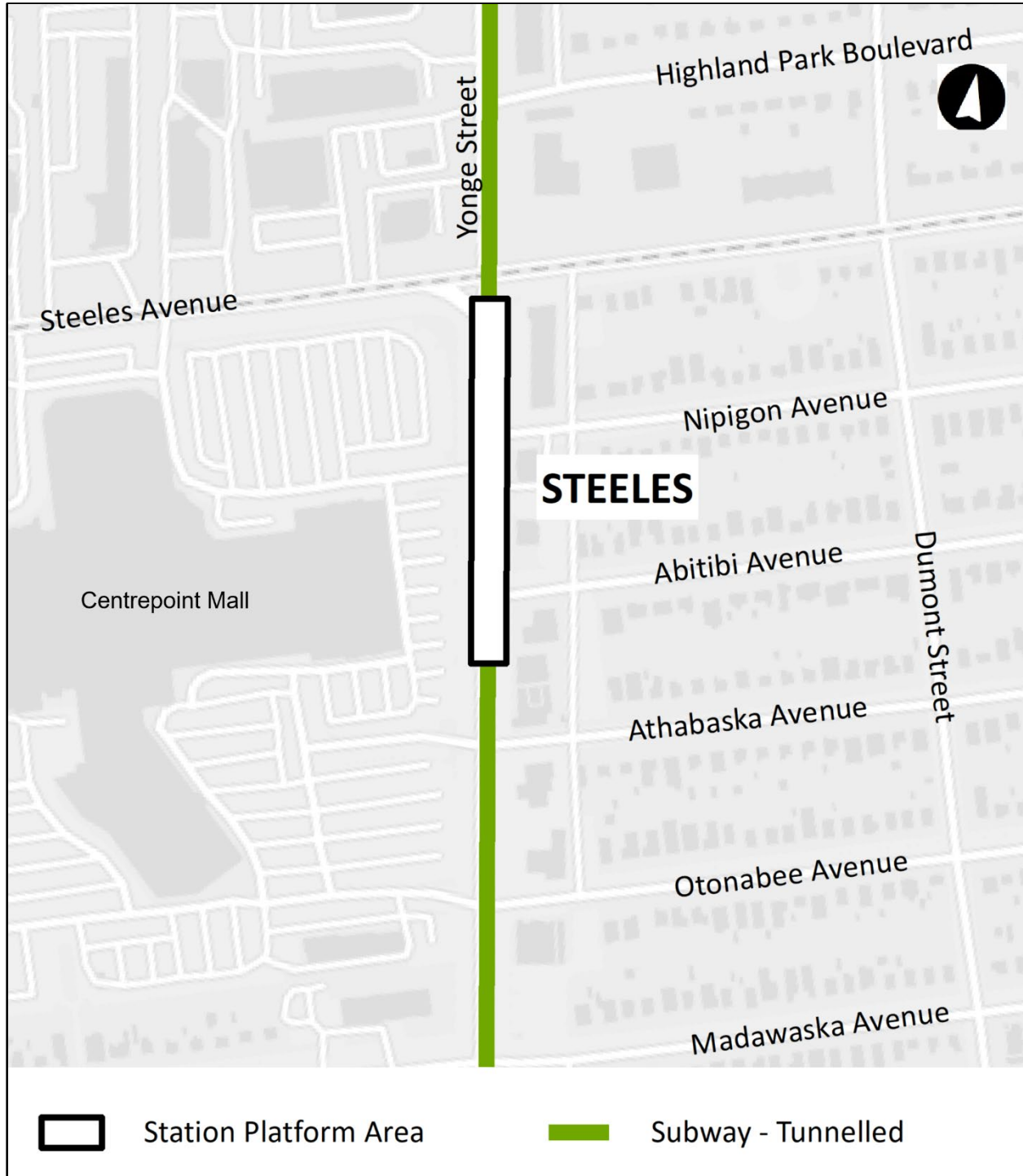


Figure 2 – YNSE Steeles Station

Source: Metrolinx

Construction of Steeles Station requires excavation of a large underground station box within the existing Yonge Street right-of-way. Due to the scale and location of the works,

it is not feasible to maintain traffic operations within the existing roadway during key stages of construction.

To facilitate construction while maintaining transportation network operations, Yonge Street, between Madawaska Avenue and Steeles Avenue, will be temporarily realigned to the west onto a newly constructed diversion road. This diversion road will maintain two northbound and two southbound travel lanes, along with a centre two-way left-turn lane, to support continued traffic flow in the corridor. Figure 3 shows the location of the diversion road in relation to the surrounding road network.



Figure 3 – Yonge Street Diversion Road

Source: Metrolinx

The diversion road will be constructed on privately-owned lands and must be formally designated as a public highway to enable application and enforcement of municipal traffic by-laws, including speed limits, traffic control, and parking regulations.

### Council Approval Requirements

City Council approval is required for:

- Temporary full closure of Yonge Street, between Madawaska Avenue and Steeles Avenue, following implementation of the Yonge Street diversion road;
- The temporary dedication of Yonge Street diversion road as a public highway, subject to transfer of the required land interests to the City; and
- Temporary traffic and pedestrian by-law amendments, including lane closures, sidewalk closures, and related traffic control measures along Yonge Street and Steeles Avenue within the project limits.

## **Construction Staging Overview**

Construction of Steeles Station underground station box will be undertaken in multiple stages. While staging details will continue to be refined as construction progresses, the overall approach is summarized below:

### Pre-Stage – Site Preparation and Utility Relocation

(197 days, December 10, 2026 to June 24, 2027):

Initial works will include site mobilization, utility relocations, demolition, and site set-up. During this stage, adjustments to transit stops and construction of temporary transit facilities, including a Wheel-Trans Mobility Shelter Hub will be undertaken. Access to adjacent properties, including Centrepont Mall, will be maintained with staged adjustments to the driveways to ensure continued access throughout construction.

### Stages 1 and 2 – Diversion Road Construction and Traffic Reconfiguration

(445 days, Stage 1 from June 25, 2027 to January 19, 2028 & Stage 2 from January 20, 2028 to September 11, 2028):

These stages include the construction of the temporary Yonge Street diversion road, installation of temporary traffic signals, and temporary pedestrian walkways. Traffic on Steeles Avenue will be shifted to accommodate construction activities in the south-west quadrant of the Yonge Street and Steeles Avenue intersection. Initial excavation works and support structures will be installed to prepare for the subsequent station construction.

### Stage 3 – Traffic Shift and Enabling Works for Station Construction

(186 days, September 12, 2028 to March 16, 2029):

Following completion of the diversion road, traffic will be shifted onto the temporary alignment. This enables the temporary closure of the existing Yonge Street right-of-way within the station limits. During this stage, utility changeovers, traffic decking, and closure of select side streets will be implemented to support the transition to full station excavation.

### Stage 4 – Station Construction and Restoration

(493 days, March 17, 2029 to July 22, 2030):

With traffic operating on the diversion road, full excavation and construction of the underground station box and associated infrastructure will proceed. Upon completion of major works, temporary infrastructure will be removed, Steeles Avenue will be restored, and Yonge Street will be restored to its final configuration. The site will then be transitioned to subsequent contractors for completion of station systems and finishes.

Figures 4 to 8 show the construction staging and corresponding traffic configurations.

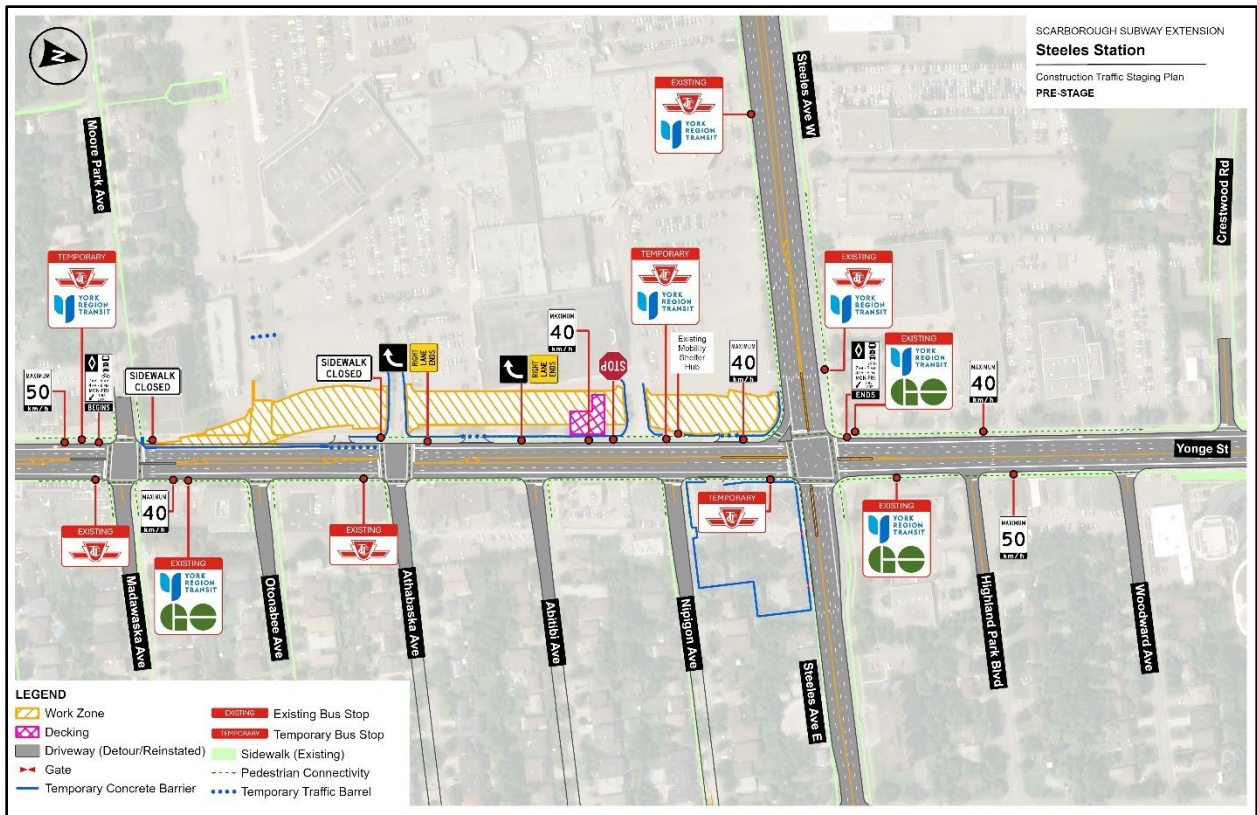


Figure 4 – YNSE Steeles Station Construction Pre-Stage

Source: Metrolinx

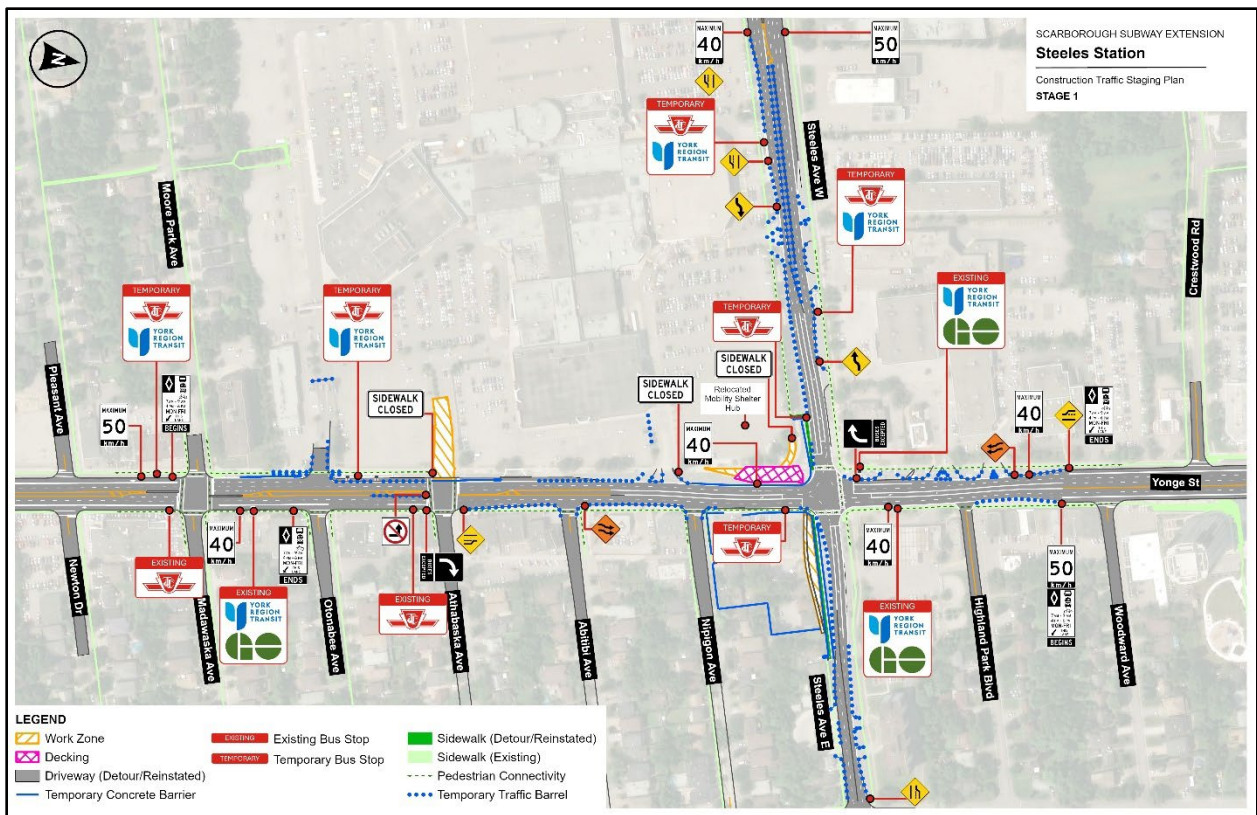


Figure 5 – YNSE Steeles Station Construction Stage 1

Source: Metrolinx

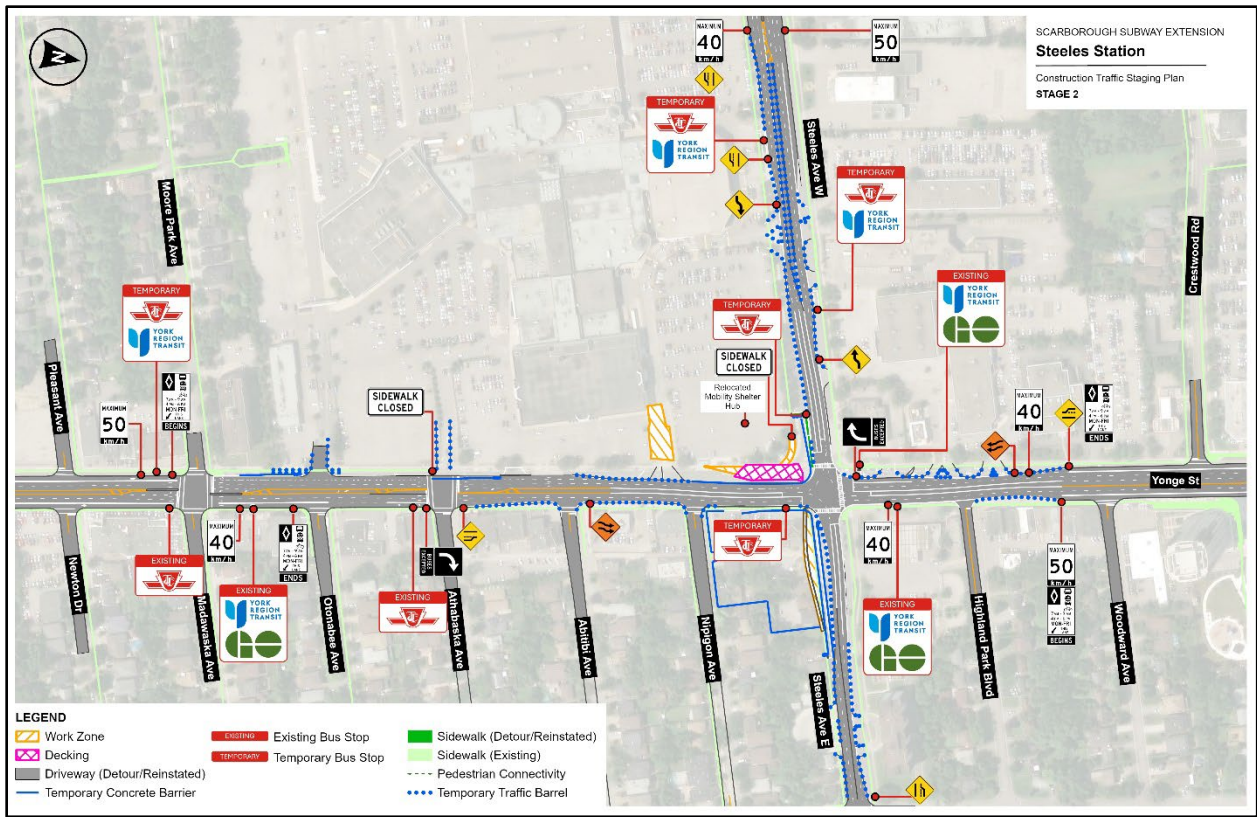


Figure 6 – YNSE Steeles Station Construction Stage 2

Source: Metrolinx

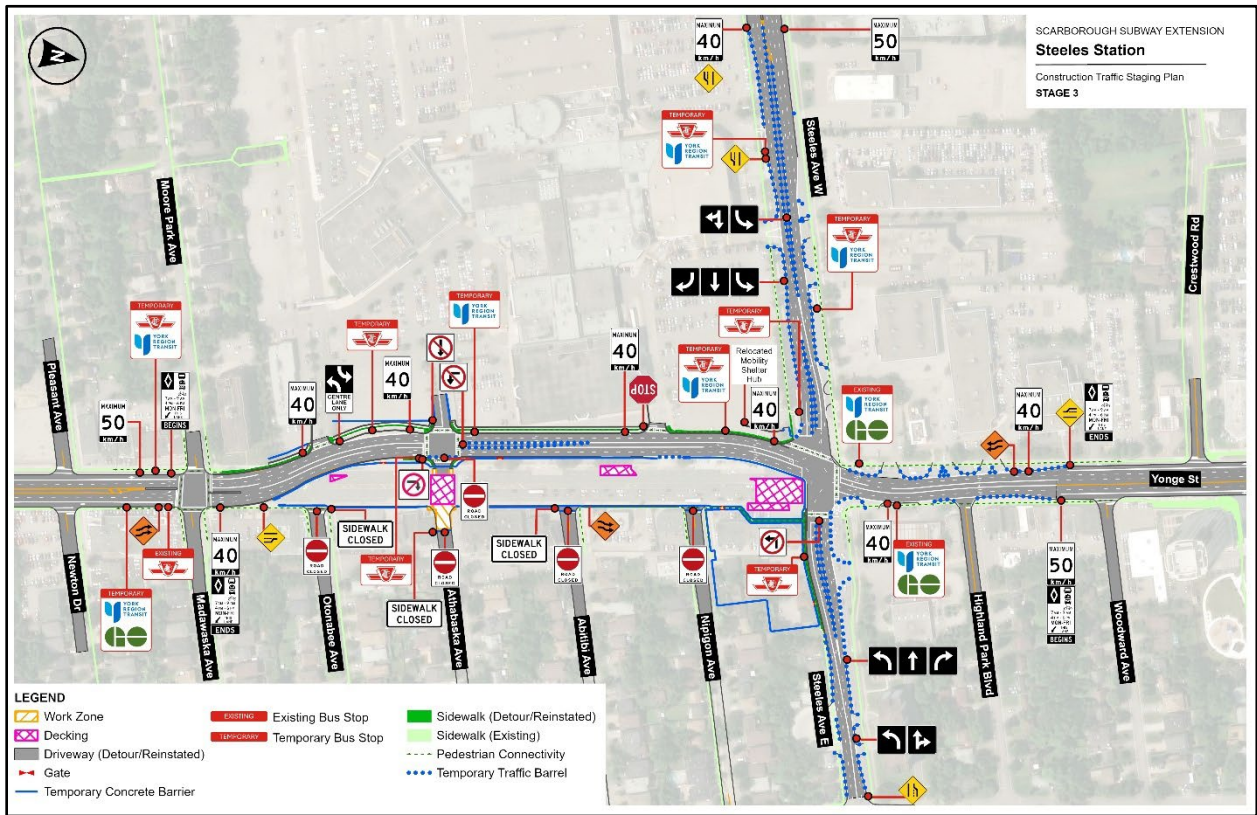


Figure 7 – YNSE Steeles Station Construction Stage 3

Source: Metrolinx

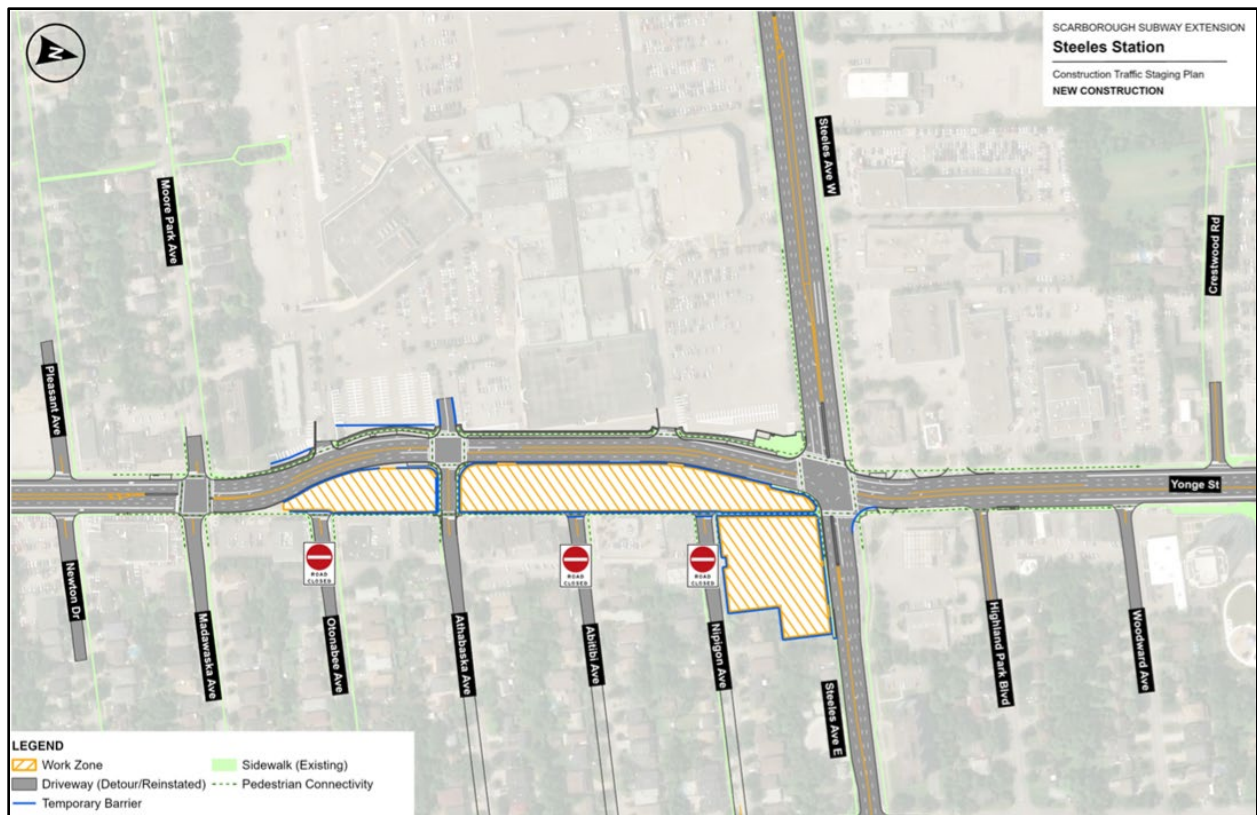


Figure 8 – YNSE Steeles Station Construction Stage 4

Source: Metrolinx

Metrolinx will require the following temporary lane closures and traffic by-law changes for the construction of the Steeles Station. These temporary traffic changes are based on the current construction staging plans and are subject to refinement as design and construction progress. Final lane configurations will be implemented through detailed traffic control plans in accordance with City requirements:

Public Laneway (Ln E Yonge S Steeles):

- Temporary closure of the public laneway (Ln E Yonge S Steeles), between Steeles Avenue and Nipigon Avenue (Stages 1 to 4).

Yonge Street:

- Temporary closure of the west sidewalk on Yonge Street, between Madawaska Avenue and Athabaska Avenue (Pre-Stage).
- Temporary closure of the west sidewalk on Yonge Street, between Nipigon Avenue and Athabaska Avenue (Stage 1).
- Temporary closure of the west sidewalk on Yonge Street, between Steeles Avenue and Athabaska Avenue (Stage 2).
- Temporary closure of the east sidewalk on Yonge Street, between Abitibi Avenue and Otonabee Avenue (Stage 3).
- Temporary traffic signals at the intersection of Yonge Street diversion road and Athabaska Avenue (Pre-Stage to 4).

- Removal of east-to-southbound right-turn channel in the south-west corner of the intersection of Yonge Street and Steeles Avenue (Stages 1 to 4 leading to permanent intersection modification).
- Temporary closure of the south crosswalk at the intersection of Yonge Street and Steeles Avenue (Stages 1 to 3).
- Temporary closure of the east crosswalk at the intersection of Yonge Street and Athabaska Avenue (Stage 3).
- Temporary closure of the westerly southbound and easterly northbound High Occupancy Vehicle (HOV) lanes on Yonge Street, between Steeles Avenue and Madawaska Avenue (Stages 1 to 2).
- Temporary closure of the northbound and southbound curb lanes on Yonge Street, between Steeles Avenue and Madawaska Avenue (Stages 1 and 2).
- Temporary full closure of Yonge Street, between Steeles Avenue and Madawaska Avenue (Stages 3 and 4).

#### Side Streets:

- Temporary closure of Nipigon Avenue at Yonge Street (Stages 3 and 4).
- Temporary closure of Abitibi Avenue at Yonge Street (Stages 3 and 4).
- Temporary closure of Athabaska Avenue at Yonge Street (Stage 3).
- Temporary closure of Otonabee Avenue at Yonge Street (Stages 3 and 4).

#### Steeles Avenue:

- Temporary closure of westbound right-turn lane on Steeles Avenue, between Yonge Street and a point approximately 85 metres east (Stages 1 and 2).
- Temporary closure of westbound curb lane on Steeles Avenue, between a point approximately 200 metres west of Yonge Street and a point approximately 150 metres east of Yonge Street (Stages 1 to 3).
- Temporary closure of westbound median lane on Steeles Avenue, between Yonge Street and a point approximately 85 metres west of Yonge Street (Stages 1 to 3).
- Temporary closure of the eastbound curb lane on Steeles Avenue, between a point approximately 305 metres west of Yonge Street and a point approximately 150 metres east of Yonge Street (Stages 1 to 3).
- Temporary closure of the eastbound median lane on Steeles Avenue, between Yonge Street and a point 200 metres west of Yonge Street (Stages 1 to 3).
- Temporary closure of the two-way left-turn-only lane on Steeles Avenue, between a point approximately 125 metres west of Yonge Street and a point 180 metres further west (Stages 1 to 3).

#### Speed Limit and Traffic Restrictions:

- Temporary posted speed limit of 40 km/h on Yonge Street, between Steeles Avenue and Madawaska Avenue (Stages 1 to 2).
- Temporary posted speed limit of 40 km/h on Yonge Street diversion road, between Steeles Avenue and Madawaska Avenue (Stages 3 and 4).

- Temporary posted speed limit of 40 km/h on Steeles Avenue, between Dumont Street and a point 360 metres west of Yonge Street (Stages 1 to 3).
- Temporary prohibition of eastbound, westbound, northbound, and southbound right-turns on red signal at the intersection of Yonge Street and Steeles Avenue (Stages 1 to 2).
- Temporary prohibition of northbound left-turn movement at the intersection of Yonge Street and Athabaska Avenue (Stage 1).
- Temporary prohibition of northbound right-turn, southbound left-turn and eastbound through traffic movements at the intersection of Yonge Street and Athabaska Avenue (Stage 3).
- Temporary stopping prohibition on both sides of Yonge Street, between Steeles Avenue and Madawaska Avenue (Stages 1 and 2).
- Temporary stopping prohibition on both sides of Yonge Street Diversion Road, between Steeles Avenue and Madawaska Avenue (Stages 3 and 4).

The temporary lane closure impacts during various construction stages are discussed below:

#### Auto Access Impacts:

Construction of Steeles Station will require a work zone within the existing Yonge Street right-of-way between Steeles Avenue and Madawaska Avenue, as well as within the adjacent portion of Steeles Avenue in the vicinity of the Yonge Street intersection.

During Stages 1 and 2, traffic will be maintained on both Yonge Street and Steeles Avenue; however, reduced roadway capacity will be in effect within the project limits. On Yonge Street, the temporary closure of HOV and curb lanes will result in reduced capacity and may impact travel times, particularly during peak periods. On Steeles Avenue, construction activities within the south-west quadrant of the Yonge Street and Steeles Avenue intersection will require modified lane configuration, including closure of portions of the curb and median lanes and lane shifts. These changes will reduce available lane capacity and may result in localized congestion.

Traffic operations will be actively managed through staged traffic control plans, including signal timing adjustments, paid duty officers, traffic agents, and traffic control persons, to maintain safe and efficient movement through the corridors. To enhance safety within the construction zone, a temporary posted speed limit of 40 km/h will be implemented on Yonge Street and Steeles Avenue within the project limits, along with “No Stopping” regulations.

Once the Yonge Street diversion road is operational (Stages 3 and 4), Yonge Street, between Steeles Avenue and Madawaska Avenue, will be closed to vehicular traffic, with all through movements accommodated on the diversion road. This diversion road will operate with two northbound and two southbound travel lanes, along with a centre two-way left-turn lane, maintaining north-south connectivity through the corridor.

During Stage 3, Steeles Avenue will continue to operate in both directions; however, modified lane configuration and reduced capacity will remain in place within the project limits to support ongoing construction activities and maintain intersection functionality.

During Stage 4, all lanes on Steeles Avenue will be restored to their existing configuration.

Access to side streets east of Yonge Street, including Nipigon Avenue, Abitibi Avenue, and Otonabee Avenue, will be restricted at Yonge Street during Stages 3 and 4. Alternative access routes will be maintained via Dumont Street and the surrounding local road network to ensure continued connectivity for residents, businesses, and service vehicles.

To support safe traffic operations, right-turn movements on a red signal will be prohibited at the Yonge Street and Steeles Avenue intersection throughout construction. In addition, a temporary traffic signal will be installed at the intersection of Yonge Street and Athabaska Avenue, with associated turn restrictions to support safe operations.

The public laneway on the east side of Yonge Street, between Steeles Avenue and Nipigon Avenue, will be closed for the duration of construction, with access maintained for utility vehicles servicing Toronto Water infrastructure within the laneway.

#### Pedestrian Impacts:

Construction of Steeles Station will require temporary sidewalk and crosswalk closures within the project limits to support staged construction of the Yonge Street diversion road and station box.

During the early stages of construction (Pre-Stage to Stage 2), pedestrian impacts will primarily occur along the west side of Yonge Street, where segments of the sidewalk will be temporarily closed between Madawaska Avenue, Athabaska Avenue, Nipigon Avenue, and Steeles Avenue, depending on the stage of construction. Pedestrians will be directed to the east side of Yonge Street using signalized crossings at Madawaska Avenue, Athabaska Avenue, and Steeles Avenue. Advance signage will be provided to guide pedestrians to available crossings and detour routes.

During Stage 3, additional impacts will occur on the east side of Yonge Street, including the temporary closure of the sidewalk between Abitibi Avenue and Otonabee Avenue. Pedestrians will be directed to the west side of Yonge Street using signalized crossings at Steeles Avenue and Madawaska Avenue to maintain continuous north-south connectivity. Pedestrian access to businesses fronting Yonge Street within this section will be maintained throughout construction.

Temporary crosswalk closures will also be required to facilitate construction activities. At the intersection of Yonge Street and Athabaska Avenue, the east crosswalk will be temporarily closed during Stage 3 to accommodate traffic decking works. At the intersection of Yonge Street and Steeles Avenue, the south crosswalk will be temporarily closed from Stage 1 through Stage 3. Pedestrians will be directed to adjacent signalized crossings to maintain safe east-west connectivity.

Pedestrian access will be maintained at all times on both Yonge Street and Steeles Avenue through temporary walkways and detours. A minimum unobstructed pedestrian clearway of 1.8 metres will be provided at all times, with a width of 2.1 metres provided

where feasible. All temporary pedestrian routes will be designed and implemented in accordance with accessibility requirements.

All sidewalks and crosswalks will be restored to their final configuration upon completion of construction.

#### Cycling Impacts:

With the temporary removal of HOV lanes on Yonge Street within the construction zone, cyclists who currently use these lanes will be required to share general purpose travel lanes with vehicular traffic during the construction period.

Steeles Avenue does not currently have dedicated cycling infrastructure within the project limits. Cyclists travelling along Steeles Avenue will continue to operate within general purpose travel lanes.

To mitigate impacts to cyclists, several safety measures will be implemented. A reduced posted speed limit of 40 km/h will be in effect within the construction zone, along with “Share the Road” signage to alert motorists to the presence of cyclists in shared travel lanes.

In addition, Metrolinx will maintain the roadway within the construction zone to ensure it remains in a safe condition, including keeping the roadway clear of dirt, debris, and loose material, and addressing potholes or uneven surfaces in a timely manner. Regular inspections will be undertaken to ensure safe conditions are maintained throughout the construction period.

#### Transit Impacts:

TTC bus service along Yonge Street will be maintained throughout the Steeles Station construction period. Due to the location of the work zone, the temporary removal of HOV lanes on Yonge Street, between Steeles Avenue and Madawaska Avenue, will be required. With reduced roadway capacity, TTC buses operating within this section may experience increased travel times, particularly during peak periods.

To address these impacts, the City, TTC, and Metrolinx will regularly monitor traffic operations and coordinate enhanced traffic management measures to support safe, efficient, and reliable transit operations throughout the construction period.

Bus services on Steeles Avenue will also be maintained during all stages of construction. However, temporary lane configurations and reduced lane capacity in the vicinity of the Yonge Street and Steeles Avenue intersection may result in delays to transit services.

Existing TTC, York Region Transit, and GO Transit bus stops in the vicinity of the Steeles Station site will be relocated throughout the various construction stages. A summary of the relocated bus stops is provided in Attachment 4. Metrolinx will coordinate with TTC, YRT, and GO Transit to ensure all relocated bus stops meet

temporary design and placement requirements, including accessibility, safety, and passenger convenience.

Emergency Vehicle Impacts:

Emergency vehicle access through the work zones will be maintained at all times. Metrolinx will coordinate with the emergency services staff to implement any work zone accommodations to enable emergency vehicle access to all properties.

Business Impacts:

Metrolinx will maintain public road access to all businesses and properties within the construction zone throughout the project. During Stages 3 and 4, with the establishment of a work zone within the Yonge Street right-of-way, direct driveway access from Yonge Street will be restricted for several properties between 6267 and 6369 Yonge Street.

Alternative access routes will be provided to all affected properties via the surrounding road network. These access arrangements have been developed to maintain connectivity for residents, businesses, deliveries, and service vehicles.

Pedestrian access to all businesses will be maintained at all times throughout construction. Temporary walkways and clearly signed detour routes will be provided, as required, to ensure safe and convenient access for customers and employees.

A summary of driveway access impacts and corresponding mitigation measures is provided in Table 1. Figure 9 shows the location of affected properties along Yonge Street.

Table 1  
Summary of Driveway Access Impacts and Mitigation Measures

<b>Impact</b>	<b>Mitigation Measure</b>
6369 Yonge Street driveways on Yonge Street blocked	Access via Steeles Avenue East and Nipigon Avenue
6365 Yonge Street - Driveway on Yonge Street blocked	Access maintained via Nipigon Avenue, Dumont Street, Athabaska Avenue, or Steeles Avenue East
6355 Yonge Street - Driveway on Yonge Street blocked	Access maintained via Abitibi Ave, Dumont Street, Athabaska Avenue, or Steeles Avenue East
6347-6353 Yonge Street - Driveway on Yonge Street blocked	Access maintained via public laneway (Ln E Yonge S Abitibi), Abitibi Ave, Dumont Street, Athabaska Avenue, or Steeles Avenue East
6301-6321 Yonge Street - Driveway on Yonge Street blocked	Access via public laneway (Ln E Yonge S Abitibi) and Athabaska Avenue
6283-6293 Yonge Street - Driveway on Yonge Street blocked	Access via public laneway (Ln E Yonge S Athabaska) and Athabaska Avenue
6267 Yonge Street - Driveway on Yonge Street blocked	Access via public laneway (Ln E Yonge S Athabaska), Otonabee Avenue, Dumont Street and Madawaska Avenue



Figure 9 – Property Access & Alternative Routing – Steeles Station Construction Source: Metrolinx

Metrolinx will coordinate with affected businesses and property owners in advance of construction to confirm access arrangements and maintain clear communication throughout the project. Temporary signage and wayfinding will be provided to guide customers, deliveries, and service vehicles to alternative access points.

**Haul Routes:**

Construction-related truck traffic associated with the Steeles Station site will be managed through designated haul routes to minimize impacts on the surrounding road network and local neighbourhoods.

Construction activity at this site is anticipated to generate varying levels of truck traffic depending on the phase of work:

- Up to 20 trucks per hour during peak excavation activities.
- Lower (5 trucks per hour) truck volumes are expected during structural work phases.

Figure 10 shows the Metrolinx-proposed haul routes to and from the Steeles Station construction site.

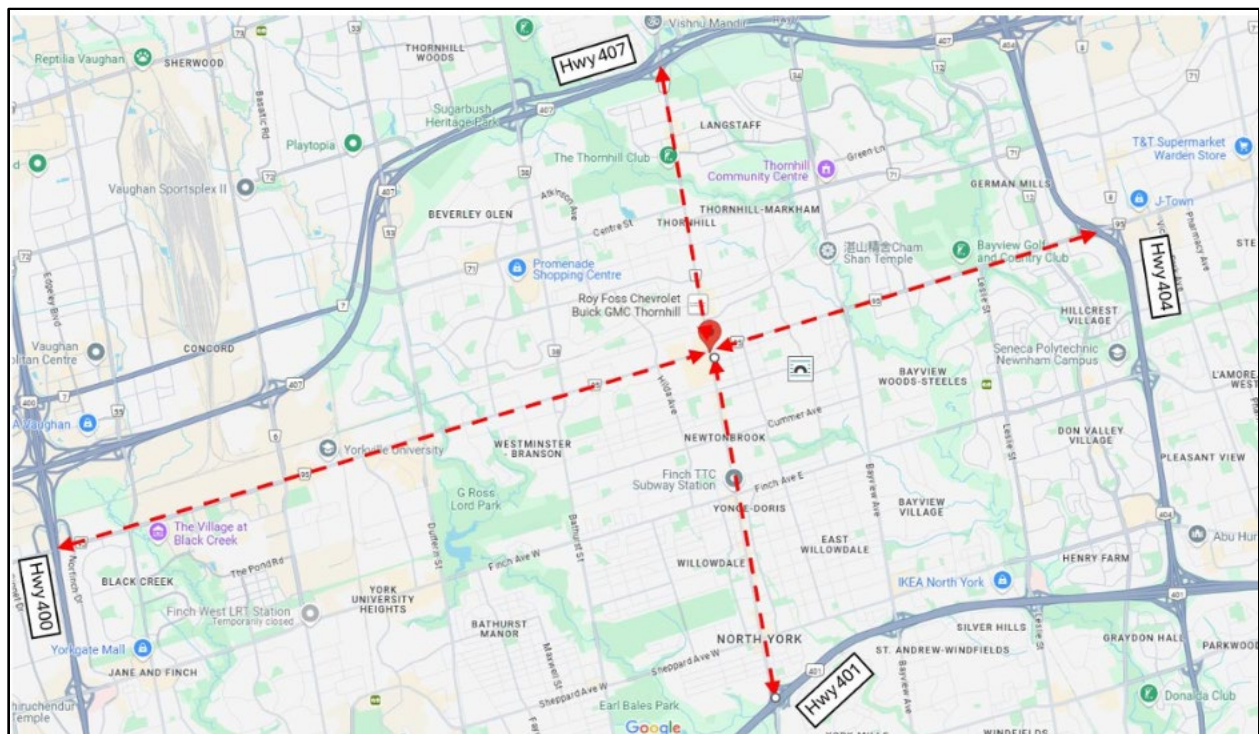


Figure 10 – YNSE Steeles Station - Potential Inbound and outbound Haul Routes

Source: Metrolinx

Truck haul routes have been selected to prioritize arterial roadways and minimize travel time through local residential streets. Construction vehicles may access the site via Yonge Street and Steeles Avenue, with connections to the regional highway network.

Truck operations will include the following measures:

- All trucks will enter and exit the site in a forward motion.
- Traffic control persons will be deployed at site access points, as required.
- Construction vehicle movements will be monitored and adjusted, where necessary, to address operational and safety concerns.
- No staging or idling of construction vehicles will be permitted on local residential streets, and
- Appropriate signage, pavement markings, and lighting will be implemented to enhance visibility and safety for all road users.

### Construction Mitigation Measures:

City staff will coordinate with Metrolinx and its contractors to implement appropriate work zone accommodations to support the safe and efficient movement of all road users during construction of Steeles Station.

Mitigation Measures will include the preparation and implementation of detailed traffic control plans, temporary signage, pavement markings, and the deployment of Traffic Control Persons (TCPs), Traffic Agents, and paid duty officers, as required. Traffic

signal timing adjustments and other operational measures will be implemented to respond to changing traffic conditions and maintain network performance.

Pedestrian, cycling, and transit operations will be maintained throughout construction through the provision of temporary bus stops and traffic mitigation measures. All temporary accommodations will be designed to meet applicable accessibility requirements, including the Accessibility for Ontarians with Disability Act (AODA).

Access to properties, businesses, and emergency services will be maintained at all times. Construction vehicle movements will be managed in accordance with approved haul routes, with measures in place to minimize impacts on local streets and surrounding communities.

City staff will monitor construction activities and traffic conditions throughout the project and require adjustments to traffic management measures, where necessary, to address operational and safety considerations.

### **Permit Requirements:**

In accordance with City of Toronto Municipal Code Chapter 743, Streets and Sidewalks, Use of, Metrolinx's contractor will be required to obtain all necessary permits prior to undertaking any work within the public right-of-way.

As part of the permit application process, the contractor will be required to submit detailed traffic control plans, haul route plans, and supporting documentation in accordance with applicable City and Provincial standards, including the Ontario Traffic Manual (OTM) Book 7, Book 12, and Book 18. Submissions will be reviewed by Transportation Services staff to ensure that the safety, accessibility, and mobility needs of all road users are maintained.

Permits issued for the work will include both standard and project-specific conditions related to construction staging, traffic management, pedestrian and cyclist safety, and construction vehicle operations. The General Manager, Transportation Services, retains the authority to impose additional conditions or modify permits, as required to address safety, access, or coordination issues.

City staff will monitor field implementation to ensure compliance with approved permits and traffic control plans throughout the construction period.

### **Communication and Community Engagement:**

City staff will work closely with Metrolinx and its contractors to ensure that residents, businesses, and stakeholders are kept informed throughout the construction period.

Metrolinx will provide advance notice of construction activities, including information on upcoming work, anticipated impacts, and mitigation measures, through a range of communication channels.

A dedicated contact line and email will be maintained by Metrolinx to receive and respond to inquiries from the public. Issues raised through 311 or local Councillor's

office will be directed to the appropriate Metrolinx project team for timely follow-up and resolution.

City staff will coordinate with the local Councillor's office and provide updates on construction activities, as required. Metrolinx will also engage with affected businesses and community stakeholders to minimize disruption and maintain access throughout construction.

### **Extension of Delegated Authority:**

In 2022, City Council, through Item IE29.5, authorized the General Manager, Transportation Services, to implement long-term temporary road closures required to support the construction of the YNSE project. That delegated authority is currently set to expire on December 31, 2026.

As the project advances into major surface construction, including Steeles Station, the Finch Transition Structure, and other associated works along the Yonge Street corridor, a significant number of road, lane, and sidewalk closures will be required to support utility relocations, excavations, station construction, traffic staging, and roadway restoration activities.

Given the scale, complexity, and evolving nature of these works, timely implementation of closures is critical to maintaining construction schedules. Requiring separate reports to City Council for each closure exceeding 30 days would introduce delays due to Council reporting cycles and limit the City's ability to respond to changing construction conditions.

In addition, the volume of reporting associated with these closures would place a significant administrative burden on Transportation Services staff, reducing their ability to focus on technical review, stakeholder coordination, and work zone management to minimize impacts on the transportation network and surrounding communities.

To address these challenges, this report recommends extending the delegated authority of the General Manager, Transportation Services, to December 31, 2030. This will enable Transportation Services to implement long-term temporary road closures, including closures of up to 365 consecutive days, and associated traffic control measures, as required to support construction activities, without the need for subsequent reports to City Council.

This approach is consistent with previous City Council approvals for major transit projects including the Ontario Line, Scarborough Subway Extension, and Eglinton Crosstown West Extension.

All closures implemented under this authority will remain subject to the City's permit review process, applicable standards, and coordination with Metrolinx, emergency services, and other stakeholders to ensure that impacts to the transportation network, adjacent properties, and surrounding communities are appropriately managed.

## **CONTACT**

---

Navi Tathgar  
Manager, Transit Infrastructure Projects  
Transportation Services  
416-397-4588, navi.tathgar@toronto.ca

## **SIGNATURE**

---

Gregg Loane  
Interim Deputy General Manager

## **ATTACHMENTS**

---

Attachment 1: YNSE Steeles Station – Yonge Street Diversion Road - Reference Plan 1  
Attachment 2: YNSE Steeles Station - Yonge Street Diversion Road - Reference Plan 2  
Attachment 3: YNSE Steeles Station - Yonge Street Diversion Road - Reference Plan 3  
Attachment 4: YNSE Steeles Station - Summary of Transit Bus Stop Relocations







Attachment 4 – YNSE Steeles Station - Summary of Transit Bus Stop Relocations

Stop	Existing Location	Pre-Stage	Stage 1	Stage 2	Stage 3	Stage 4 (New Construction)
Steeles Avenue & Centrepont Mall Eastbound	Midblock	No Change	Relocated 25m West	Relocated 25m West	Relocated 25m West	Restored to Existing
Yonge Street and Steeles Avenue Westbound (TTC)	Far Side	No Change	Relocated 88m West	Relocated 88m West	Relocated 88m West	Restored to Existing
Yonge Street and Steeles Avenue Northbound (TTC)	Near Side	Near Side	Near Side	Near Side	Relocated Far Side (EB on Steeles Ave)	Near Side
Yonge Street and Steeles Avenue Southbound (TTC)	Far Side	No Change	Near Side (EB on Steeles Ave)	Near Side (EB on Steeles Ave)	Far Side on Realigned Road	Far Side on Realigned Road
Yonge Street and Steeles Avenue Northbound (YRT)	Far Side	No Change	No Change	No Change	No Change	Far Side (60m North)
Yonge Street and Steeles Avenue Southbound (YRT)	Near Side	No Change	Relocated 38m North	Relocated 38m North	Relocated 38m North	Restored to Existing
Yonge Street and Athabaska Avenue Northbound	Near Side	No Change	No Change	No Change	Near Side on Realigned Road	Near Side on Realigned Road
Yonge Street and Athabaska Avenue Southbound (TTC)	Near Side	No Change	Relocated 98m South	Restored to Existing	Far Side on Realigned Road (85m South)	Far Side on Realigned Road (85m South)
Yonge Street and Athabaska Avenue Southbound (YRT)	Near Side	No change	Relocated Far Side (115m South)	Restored to Existing	Near Side on Realigned Road (43m South)	Near Side on Realigned Road (43m South)

Yonge Street and Madawaska Avenue Northbound (TTC)	Near Side	No Change	No Change	No Change	No Change	No Change
Yonge Street and Madawaska Avenue Southbound	Near Side	Far Side (53m South)	Far Side (53m South)	Far Side (53m South)	Far Side (53m South)	Far Side (53m South)
Yonge Street and Madawaska Avenue Northbound (YRT/GO Transit)	Far Side	No Change	No Change	No Change	Near Side (97m south)	Near Side (97m south)