

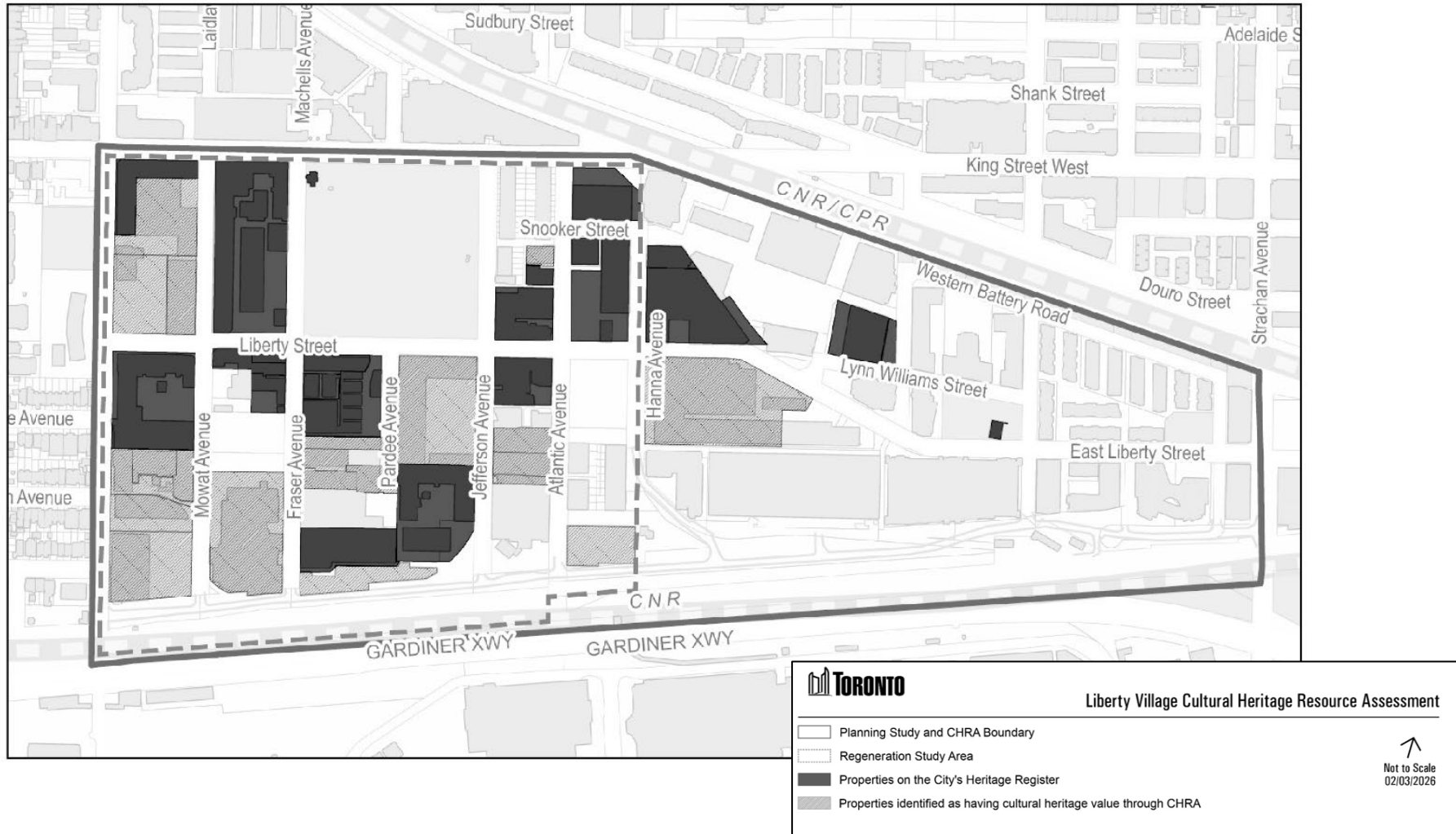


PB43.7

Liberty Village Cultural Heritage Resource Assessment

PB43.7

Liberty Village CHRA Study Area (Attachment 1)



Liberty For All Planning Study

- On December 13, 2023, City Council accepted a settlement which resulted in the conversion and re-designation of lands in Liberty Village west of Hanna Avenue from Core Employment Areas to Regeneration Areas.
- In the Summer of 2024, the Liberty For All Planning Study was initiated to establish a comprehensive planning framework for Liberty Village and to set out a long-term vision for the achievement of a complete community centered around transit investment.



Liberty Street, looking east from Dufferin Street (City of Toronto)

PB43.7

Liberty For All Planning Study Process

Summer/Fall 2024:
CHRA commences

April 2025: Community
Consultation Meeting
#1

May June 2025:
Heritage Focus Group
#1 & #2

June/July 2025: Other
stakeholder meetings:
Residents' Association,
Landowners

November 2025:
Community
Consultation Meeting
#2

April 2026: Final CHRA
recommendations
communicated
through report to TPB

May 2026: Planning
Study Final Report
considered by TEYCC

PB43.7

What is a Cultural Heritage Resource Assessment (CHRA)?

- Documents and analyzes how an area has developed over time
- Gathers an understanding of how communities value the cultural heritage of an area
- Identifies properties with potential cultural heritage value or interest to be considered for inclusion on the City's Heritage Register
- Informs other components of a planning study to integrate cultural heritage resources into plans for growth

More information on CHRAs can be found here:

<https://www.toronto.ca/city-government/planning-development/heritage-preservation/city-wide-heritage-survey-feasibility-study/>



Aerial photo – 1930s (City of Toronto Archives)

Historic Context Statement

The production of a Historic Context Statement is the first step of a CHRA.

A Historic Context Statement:

- explains the area's contemporary form and character by identifying important themes and significant periods in its historical evolution
- informs evaluation of properties with an understanding of how properties relate to and support an area's context



Liberty St and Hanna Ave (Heritage Planning)

Liberty Village Historic Context Statement

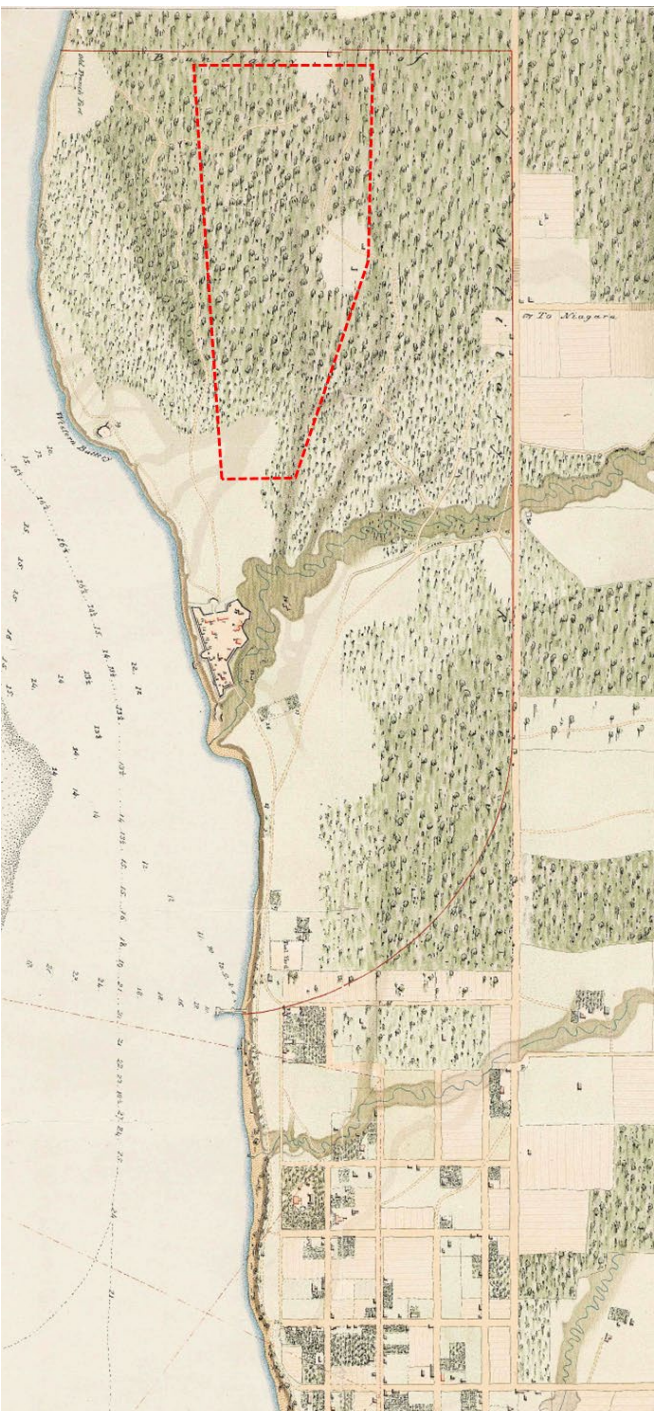
- **Theme: Indigenous Communities**
- **Theme: Ordnance Reserve**
- **Theme: Transportation**
- **Theme: Public Institutions**
 - Sub-theme: Prison History
- **Theme: Industrial Development**
 - Sub-theme: Labour History
 - Sub-theme: Workers Housing & Residential Development
 - Sub-theme: Canadian National Exhibition
- **Theme: Redevelopment and Adaptive Reuse**
 - Sub-theme: Creative Communities & Live/Work Spaces



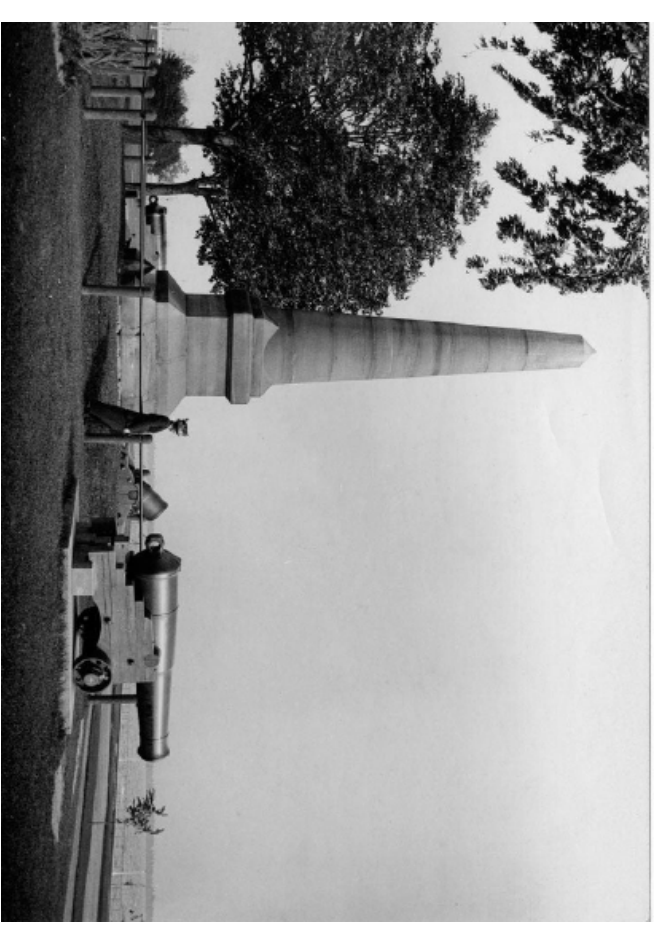
King St W and Dufferin St – 1917 (Library and Archives Canada)

PB43.7

Theme: Indigenous Communities



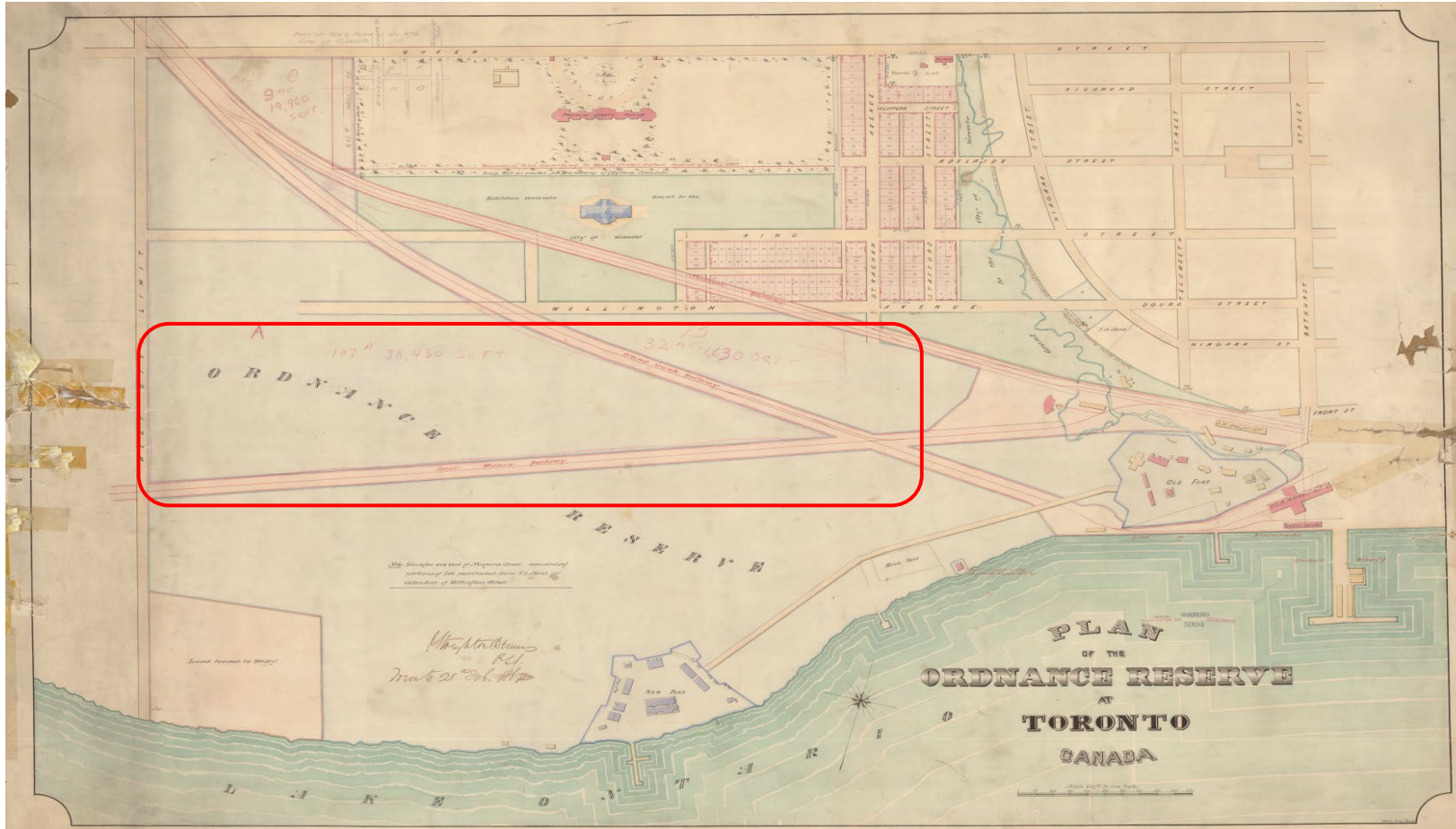
1818 Phillpotts Plan of York, with approximate location of Liberty Village outlined in red



Fort Rouillé Monument, Oct. 11, 1915 (City of Toronto Archives)

PB43.7

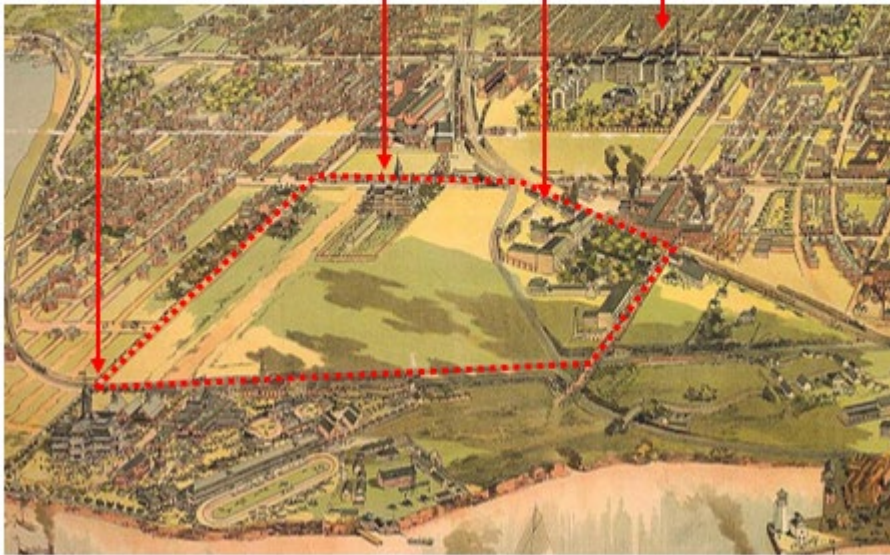
Theme: Ordnance Reserve



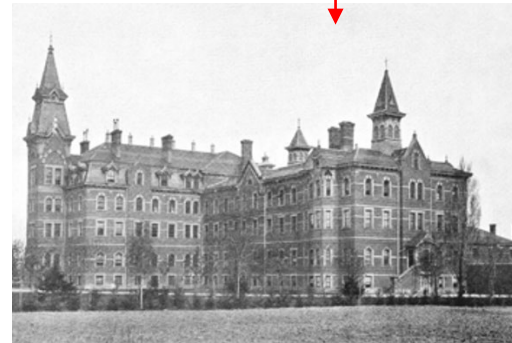
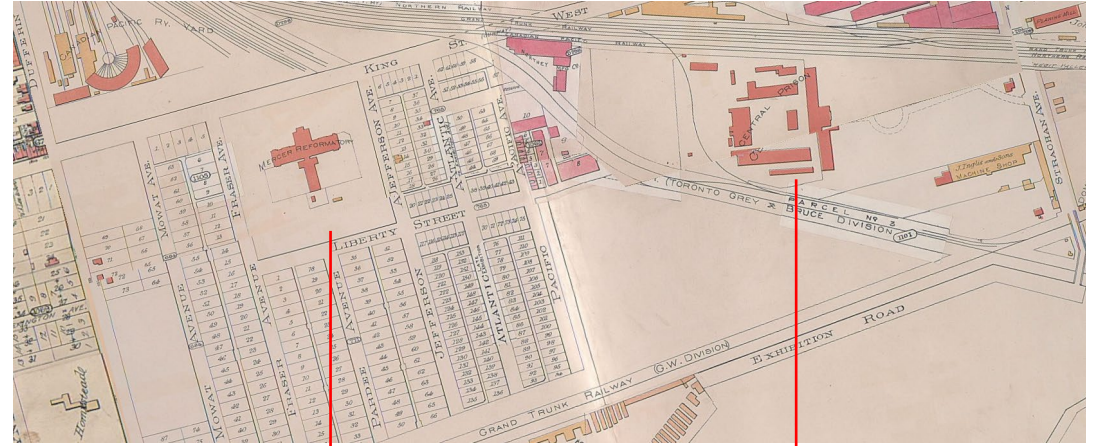
1862 Plan of Ordnance Reserve. Approximate location of the study area outlined in red.

Theme: Public Institutions

Dominion Exhibition Grounds (1878) Central Prison (1873)
Mercer Reformatory (1880) Provincial Lunatic Asylum (1850)



A portion of the 1893 Bird's Eye View by Barclay, Clark, & Co which depicts the institutional uses in and around the study area (Toronto Public Library (TPL))



Mercer Reformatory, 1893 (Toronto Board of Trade: A Souvenir)



Central Prison, 1884 (TPL)

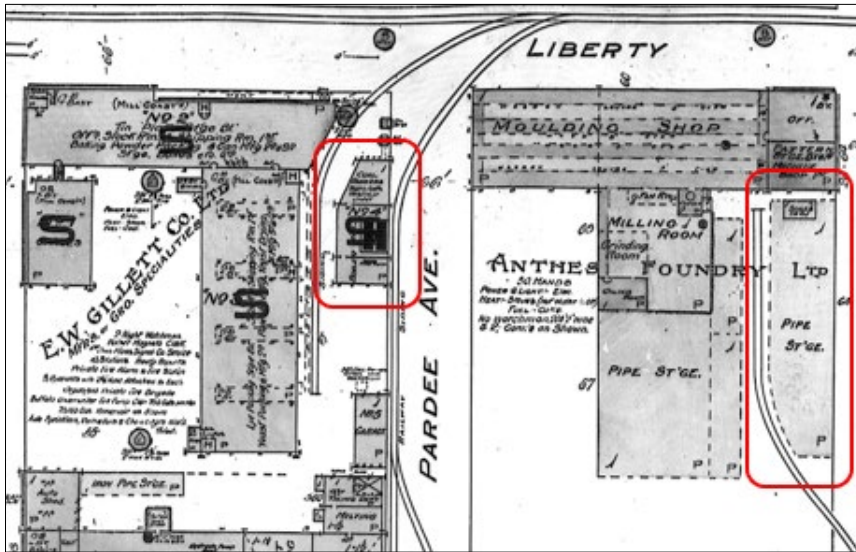


Former Warden's House for the Mercer Reformatory (Google Streetview, 2015)

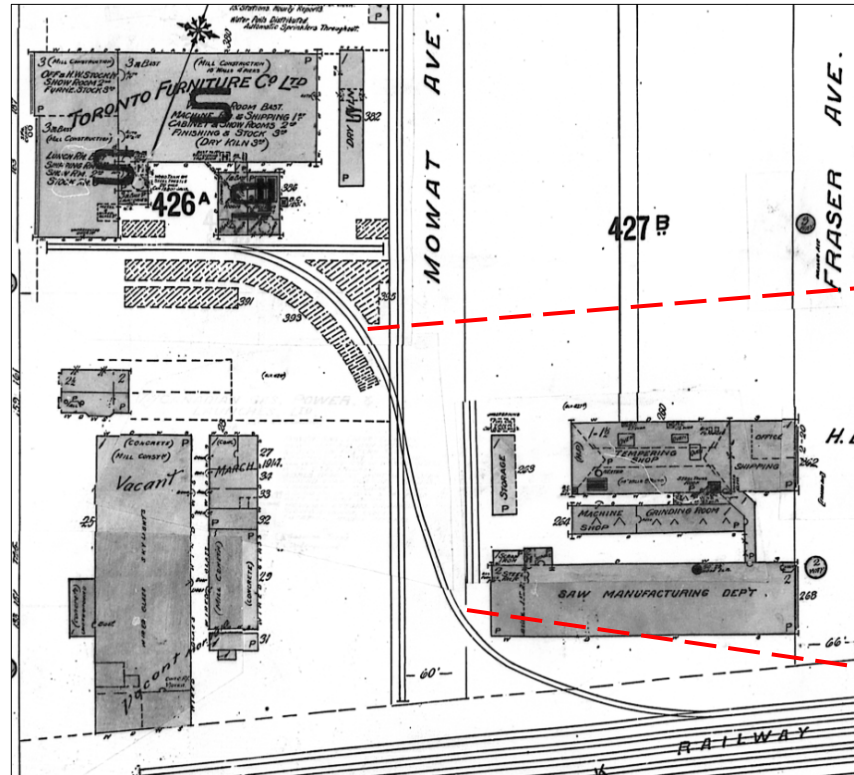


Former Prison Chapel for Central Prison (Heritage Planning, 2025)

Theme: Transportation



1914 Fire Insurance Plan depicting the curved E.W. Gillette Co. Powerhouse Building (extant) and the curved Anthes Foundry storage building (no longer extant). The buildings are outlined in red (City of Toronto Archives)



1914 Fire Insurance Plan depicting the rail spurs running from the main lines north on Mowat Avenue (City of Toronto Archives)



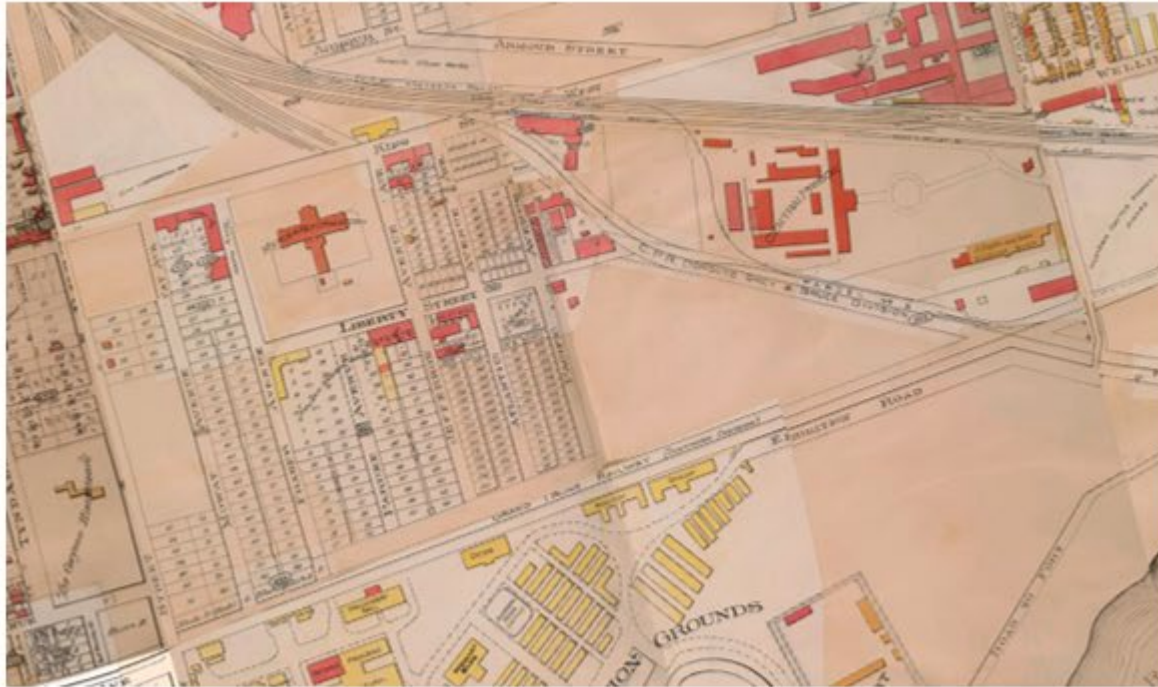
Curved buildings on Mowat Avenue



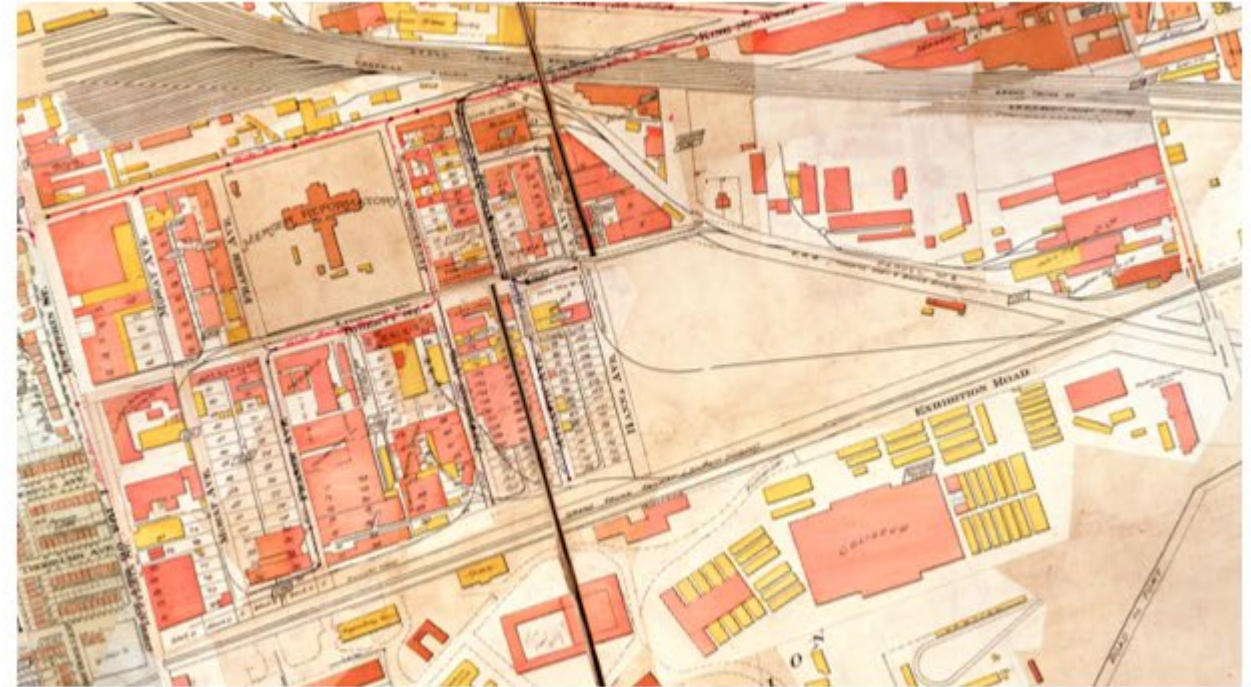
Remnant rail spurs south on Mowat Avenue near the rail lines

PB43.7

Theme: Industrial Development



1903 Fire Insurance Plan showing the few extant buildings in the study area (City of Toronto, iView)



1924 Fire Insurance Plan showing the industrial development of the area (City of Toronto, iView)

PB43.7

Theme: Industrial Development

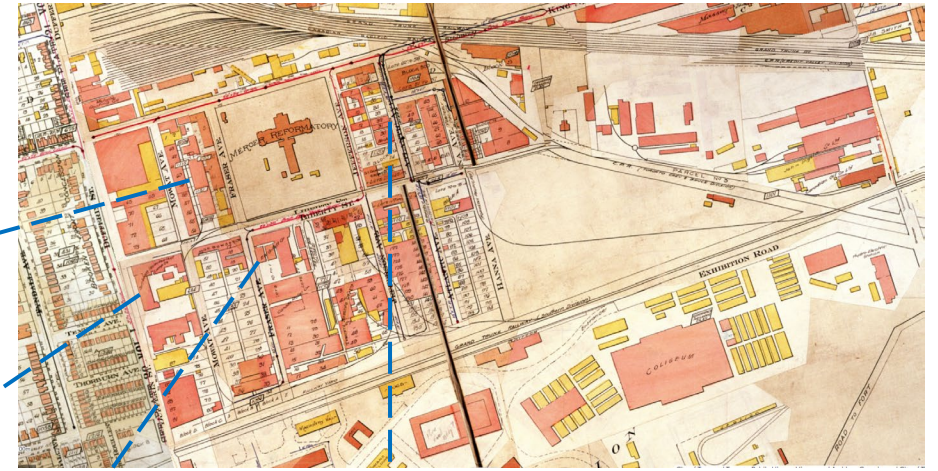


Toronto Carpet Manufacturing Co. – Date unknown (Library and Archives Canada)



CARBON AND TUNGSTEN LAMP WORKS, TORONTO, ONT.

Canadian General Electric Co. factory on Dufferin Street (S. Gardiner)



Goad's Atlas, 1924



E.W. Gillette Co. factory in Liberty Village, c. 1910 (Vintage Toronto)



102 Atlantic Avenue, originally constructed for Sovereign Shoe Company c.1910 (Heritage Planning)

PB43.7

Theme: Industrial Development

Sub-theme: Labour History



Workers on strike in Stanley Park, 1949 (TPL)



Veronica Foster working in John Inglis factory, c. 1940s (Library and Archives Canada)

Theme: Redevelopment and Adaptative Reuse



Liberty Street looking east from Mowat, c. 1974 (City of Toronto Archives)



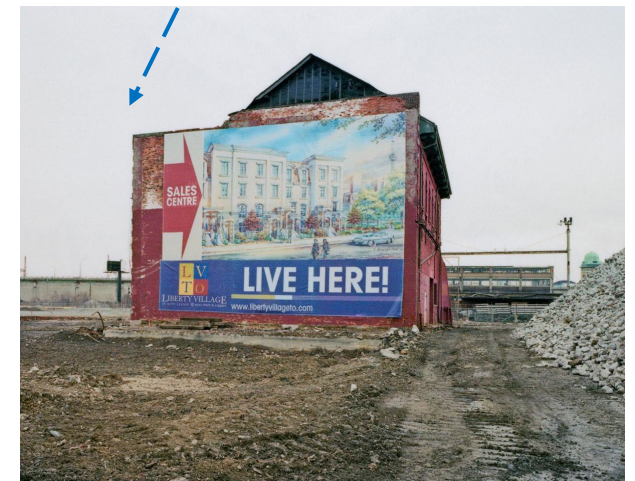
Artscape's artist studios at 60 Atlantic Avenue, c. 2011



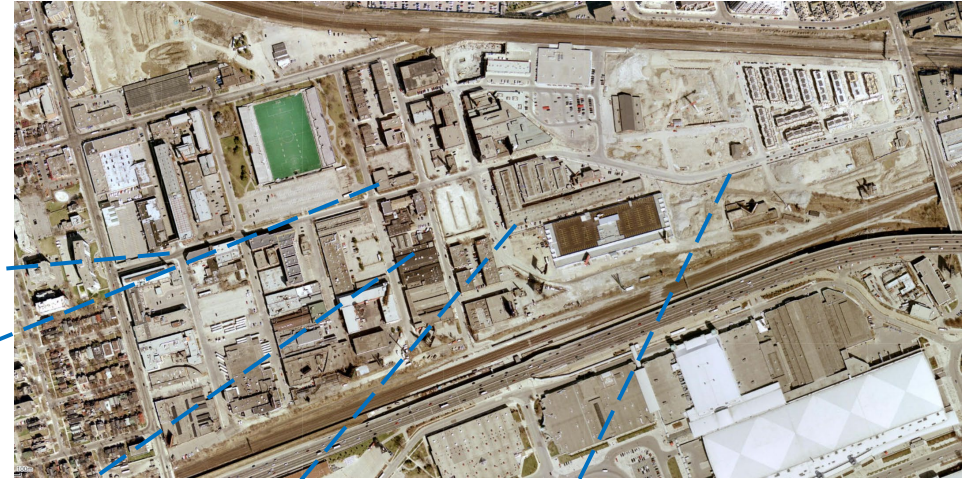
30 Atlantic Avenue



Liberty Market Building



North façade of surviving Prison Chapel with new development Ad, 2002 (Peter MacCallum)



Aerial photo, 2005 (City of Toronto)

Assessment of Properties Informed by Themes

- Sections in each theme connect the theme to the existing landscapes and built form, to inform determination of properties with potential cultural heritage value
- Identify specific types and elements of landscapes and buildings associated with themes
- Identify physical and associative features of a good example of a type within a theme



Atlantic Ave (Heritage Planning)

Theme: Industrial Development

Character Defining/Associative Features:

- Late 19th and early-20th century warehouse / factory building type:
- Brick cladding, typically red, with brick, stone, or wood detailing
- One to six storeys
- Architectural features associated with manufacturing and industrial processes, including brick chimneys or smokestacks
- Buildings predominantly featuring a flat or monitor roofline
- Regular rhythm of bays on all elevations with uniformly sized window openings
- Principal elevation(s) typically feature more elaborate detailing, including at the ground floor level, windows, and cornice/parapet

- May comprise part of a larger complex of detached or interconnected structures forming interior courtyards or mid-block connections
- Mid-twentieth century additions, where present, may feature more modest designs

Associations:

- May be designed by a well known or significant architect
- May be associated with a prominent company
- May be associated with important moments in labour history, including the roles of women
- May be associated with war-time production

Example Property:



102 Atlantic Ave.

Theme: Redevelopment and Adaptive Reuse

Character Defining/Associative Features:

- Industrial buildings that have been modified to accommodate other uses, resulting in a visibly layered built form where the original industrial building remains legible
 - Retains character defining features of an industrial building but has modern additions, materials, or window openings
- Industrial buildings with strong associations to the sub-theme of creative communities and live/work spaces

Example Properties:



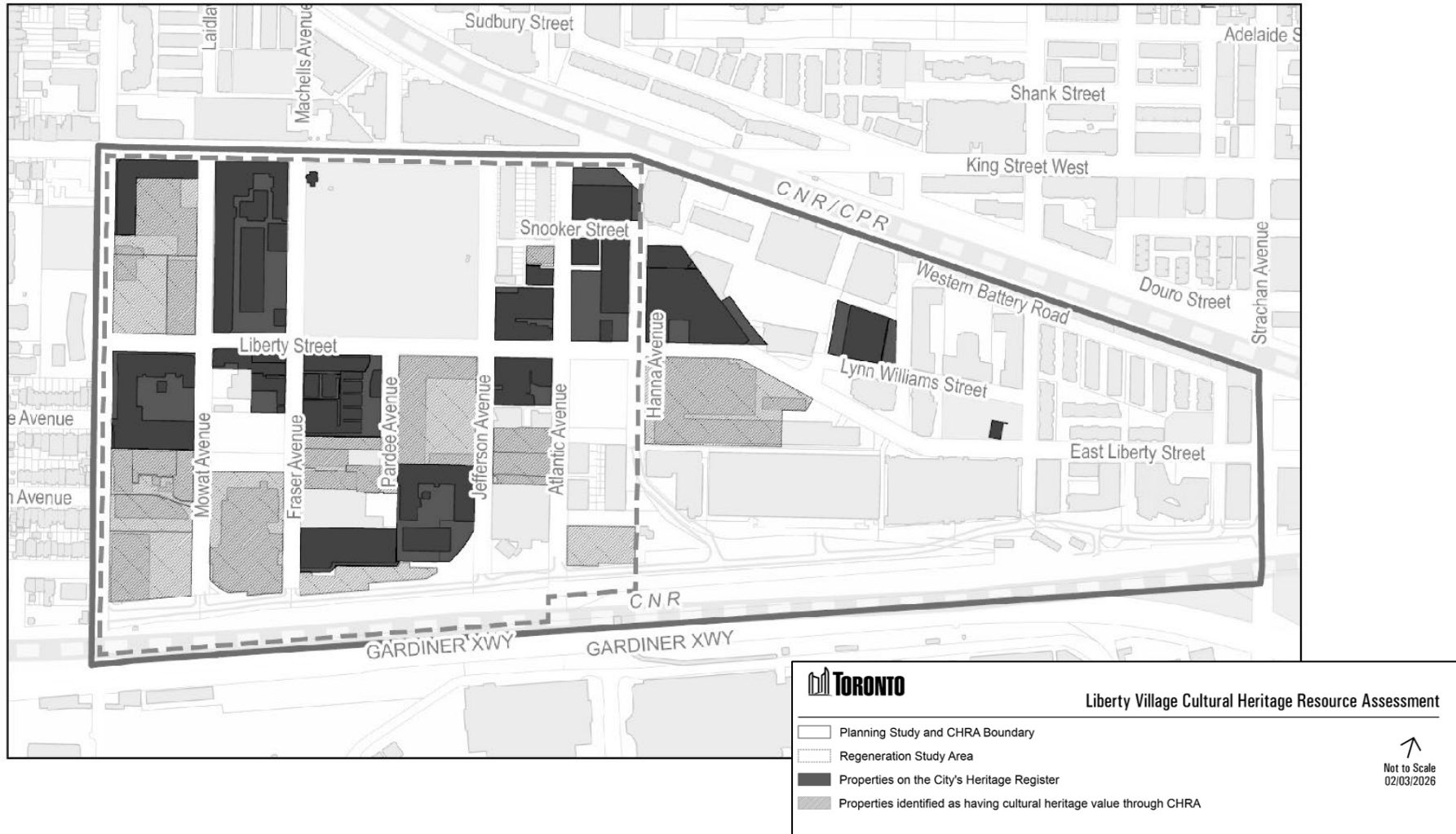
Zoomer Media,
64 Jefferson Ave.



Artscape Building,
60 Atlantic Ave.

PB43.7

Properties with Cultural Heritage Value (Attachment 1)



PB43.7

Properties with Cultural Heritage Value (Attachment 2)



- Planning Study and CHRA Boundary
- Regeneration Study Area
- Properties on the City's Heritage Register
- Properties identified as having cultural heritage value through CHRA



78 Mowat (Dufferin St frontage)



233 Dufferin St



163 & 165 Dufferin St



165 R Dufferin St



153 Dufferin St



159 Dufferin St (Mowat Ave frontage)

PB43.7

Properties with Cultural Heritage Value (Attachment 2)



- Planning Study and CHRA Boundary
- Regeneration Study Area
- Properties on the City's Heritage Register
- Properties identified as having cultural heritage value through CHRA



190 Liberty St



20 and 22 Mowat Ave



2 Fraser Ave



1 Fraser Ave



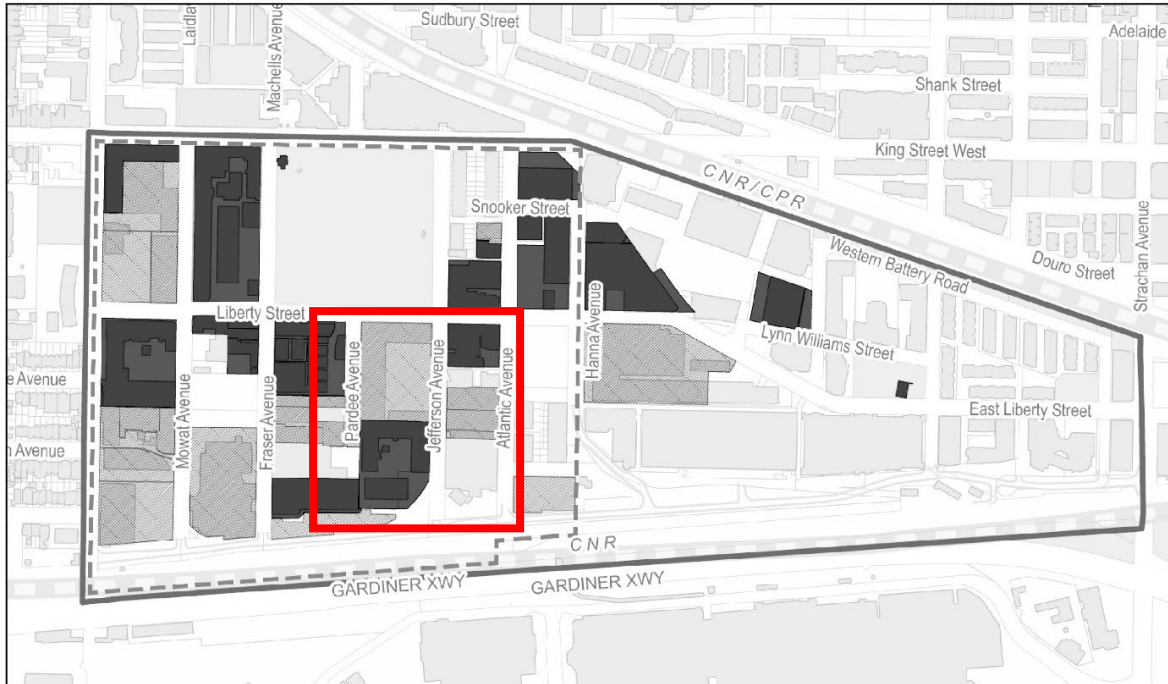
29 Fraser Ave



33 and 35 Fraser Ave

PB43.7

Properties with Cultural Heritage Value (Attachment 2)



- Planning Study and CHRA Boundary
- Regeneration Study Area
- Properties on the City's Heritage Register
- Properties identified as having cultural heritage value through CHRA



2 Pardee Ave



64 Jefferson Ave



28 Atlantic Ave



30 Atlantic Ave (Jefferson Ave frontage)



32 Atlantic Ave

PB43.7

Properties with Cultural Heritage Value (Attachment 2)



- Planning Study and CHRA Boundary
- Regeneration Study Area
- Properties on the City's Heritage Register
- Properties identified as having cultural heritage value through CHRA



102 Atlantic Ave



171 East Liberty St



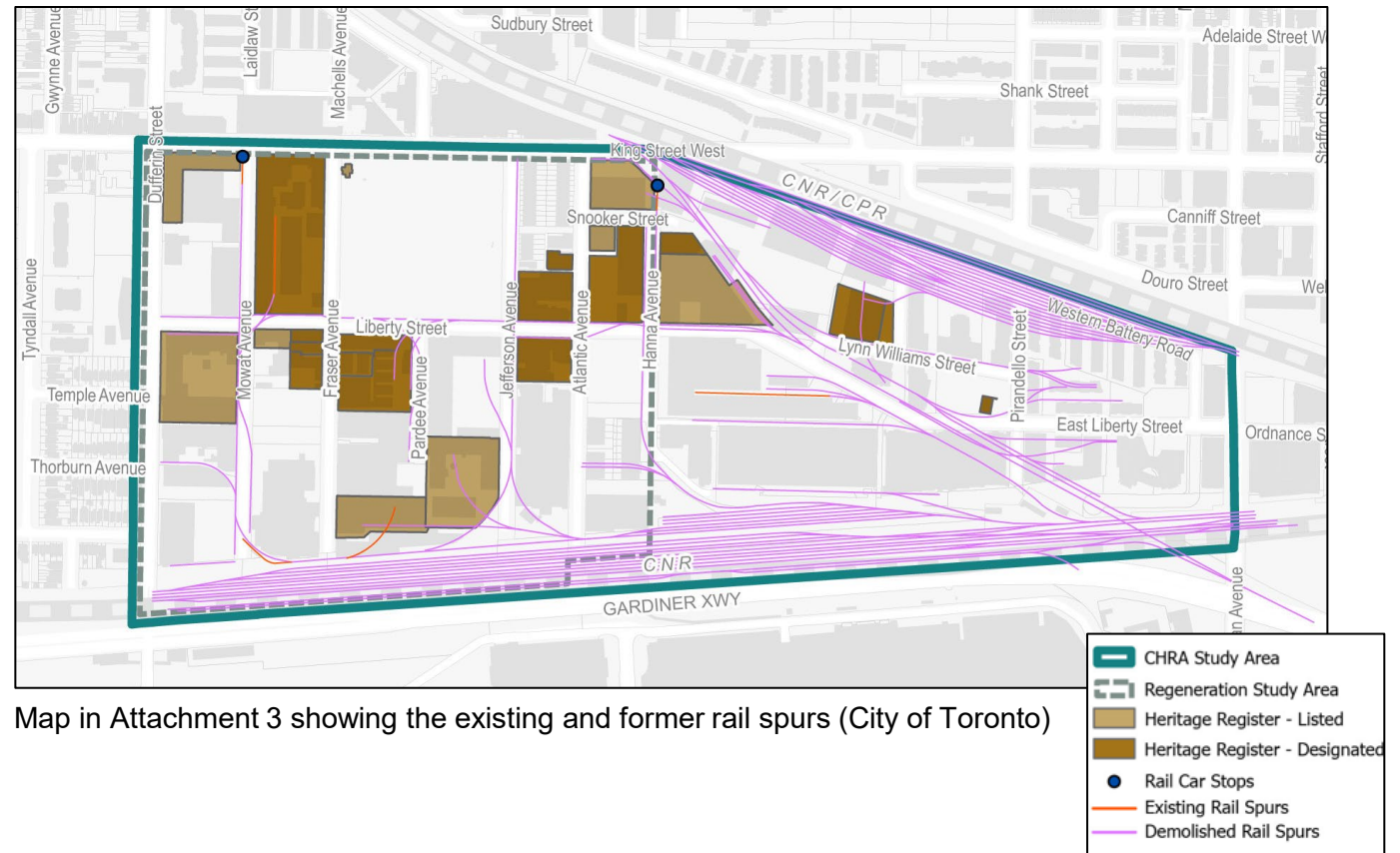
171 East Liberty St



1 Atlantic Ave

CHRA Recommendations

- The CHRA makes recommendations intended to conserve, interpret and commemorate the Liberty Village cultural heritage landscape, including:
 - City Council identify the 22 properties listed in Attachment 2 as having cultural heritage value or interest
 - creative commemoration and interpretation of labour history in the public realm;
 - conservation of remnant rail spurs and smokestacks and the interpretation of former rail spurs;
 - conservation of existing courtyards to support and maintain the former industrial character
- Advancement of truth and reconciliation within new development and public realm design to reflect the values and heritage of Indigenous communities, where supported through consultation with Indigenous communities.



Map in Attachment 3 showing the existing and former rail spurs (City of Toronto)

PB43.7

For more information

The Liberty Village CHRA can be found online here:

<https://secure.toronto.ca/council/agenda-item.do?item=2026.PB43.7>

