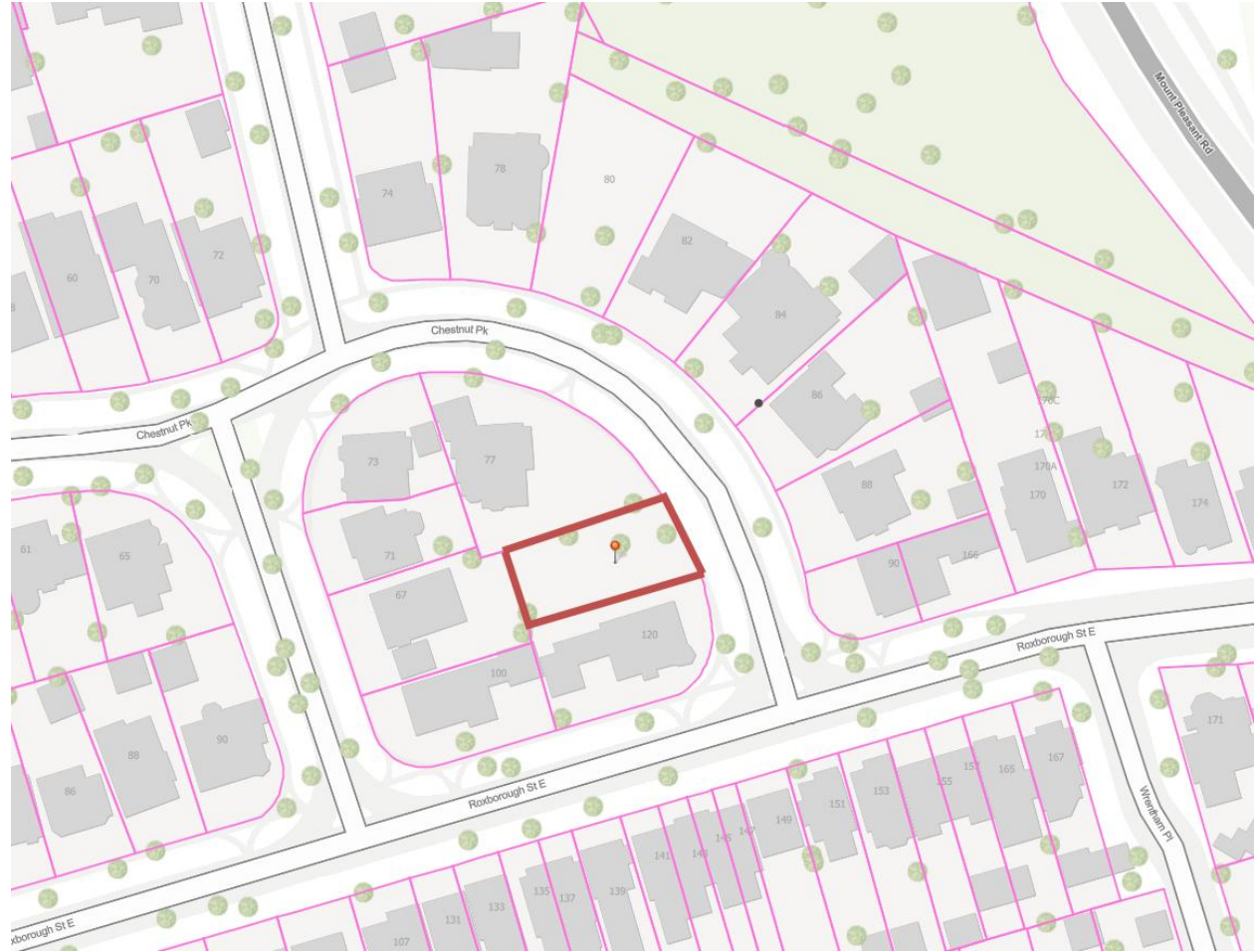




PB44.2

81 Chestnut Park – Application to Erect a Structure in the South Rosedale Heritage Conservation District

PB44.2 81 Chestnut Park



This location map is for information purposes only; the exact boundaries of the property are not shown. The arrow marks the location of the site.

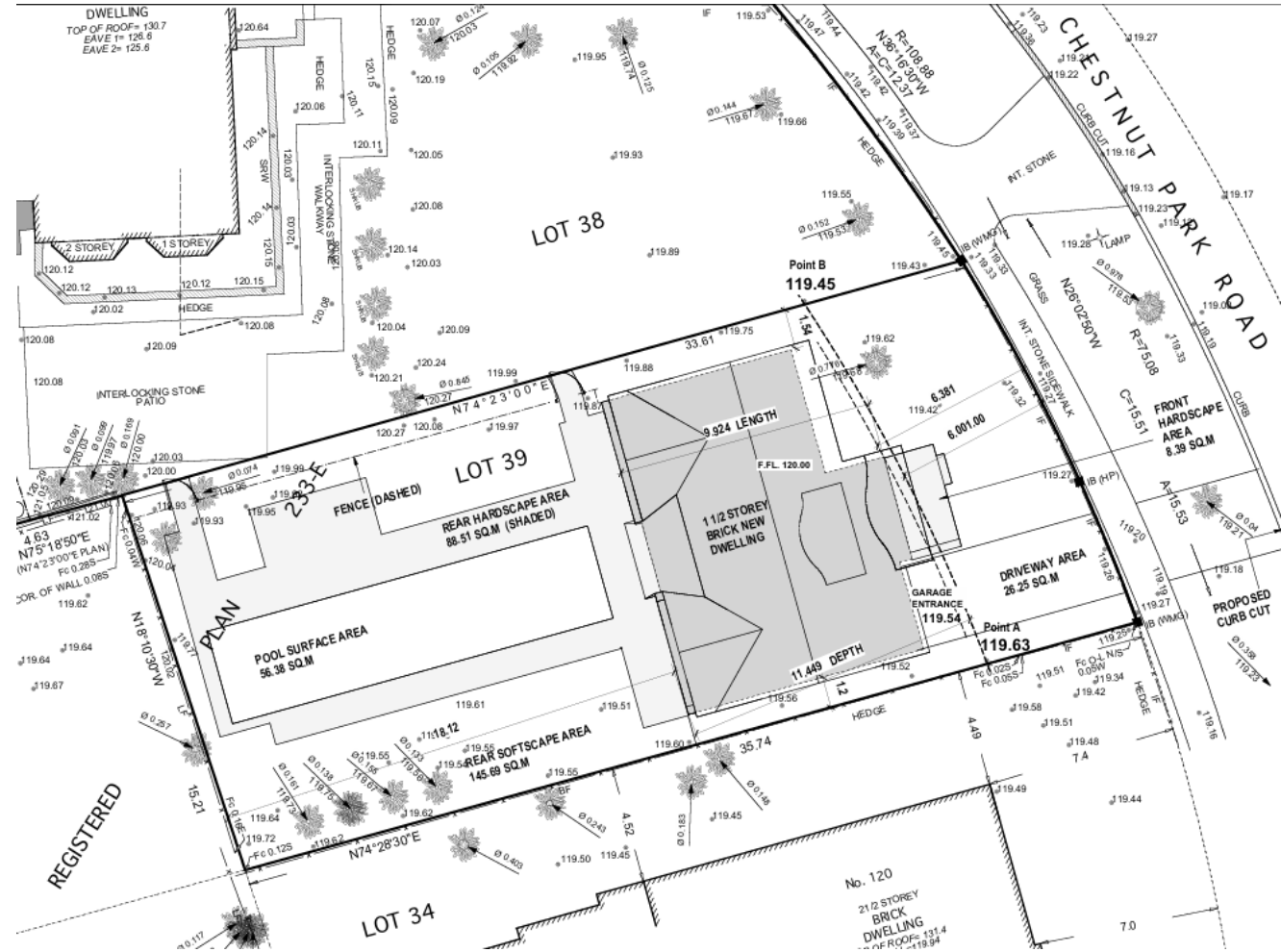


PB44.2
81 Chestnut Park



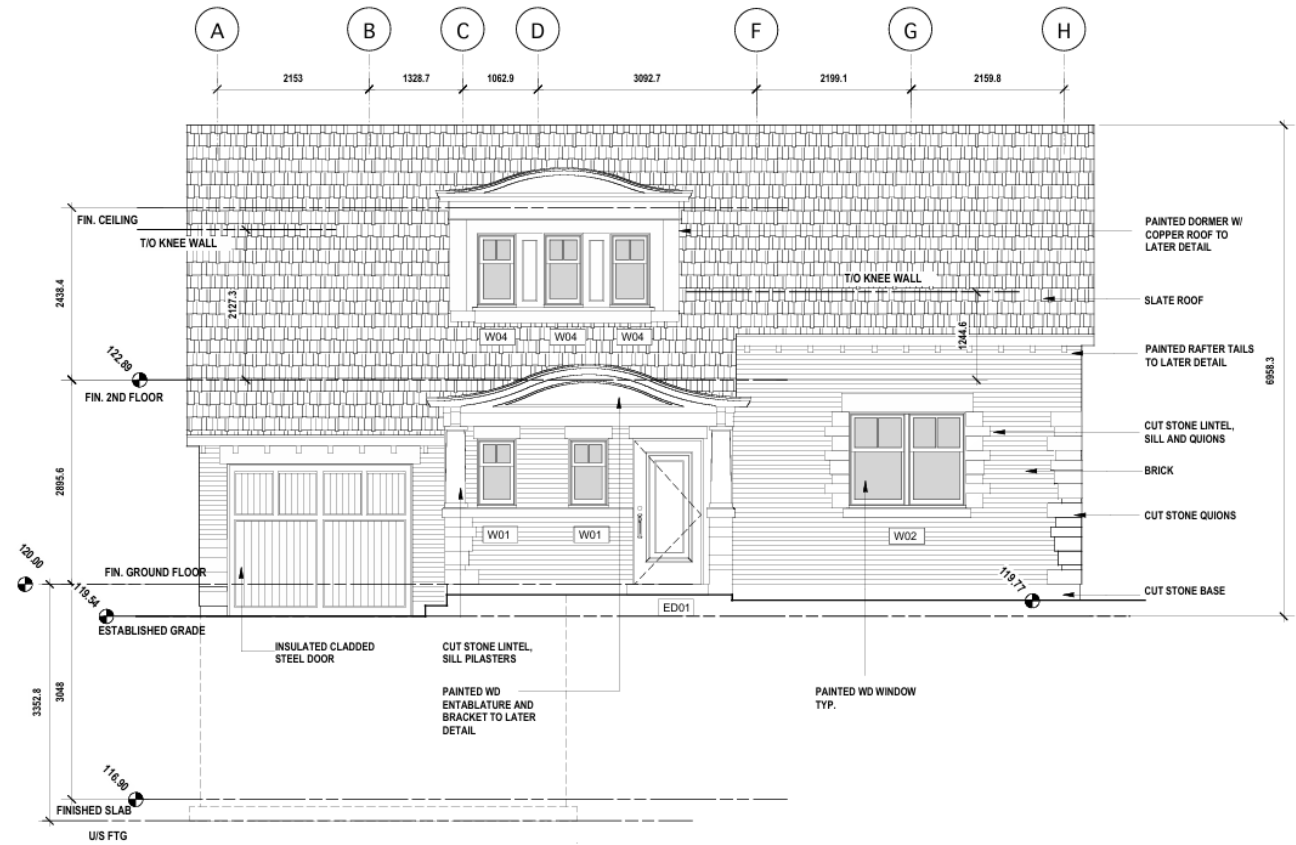
Photo of existing east elevation
(ERA Architects)

PB44.2 81 Chestnut Park



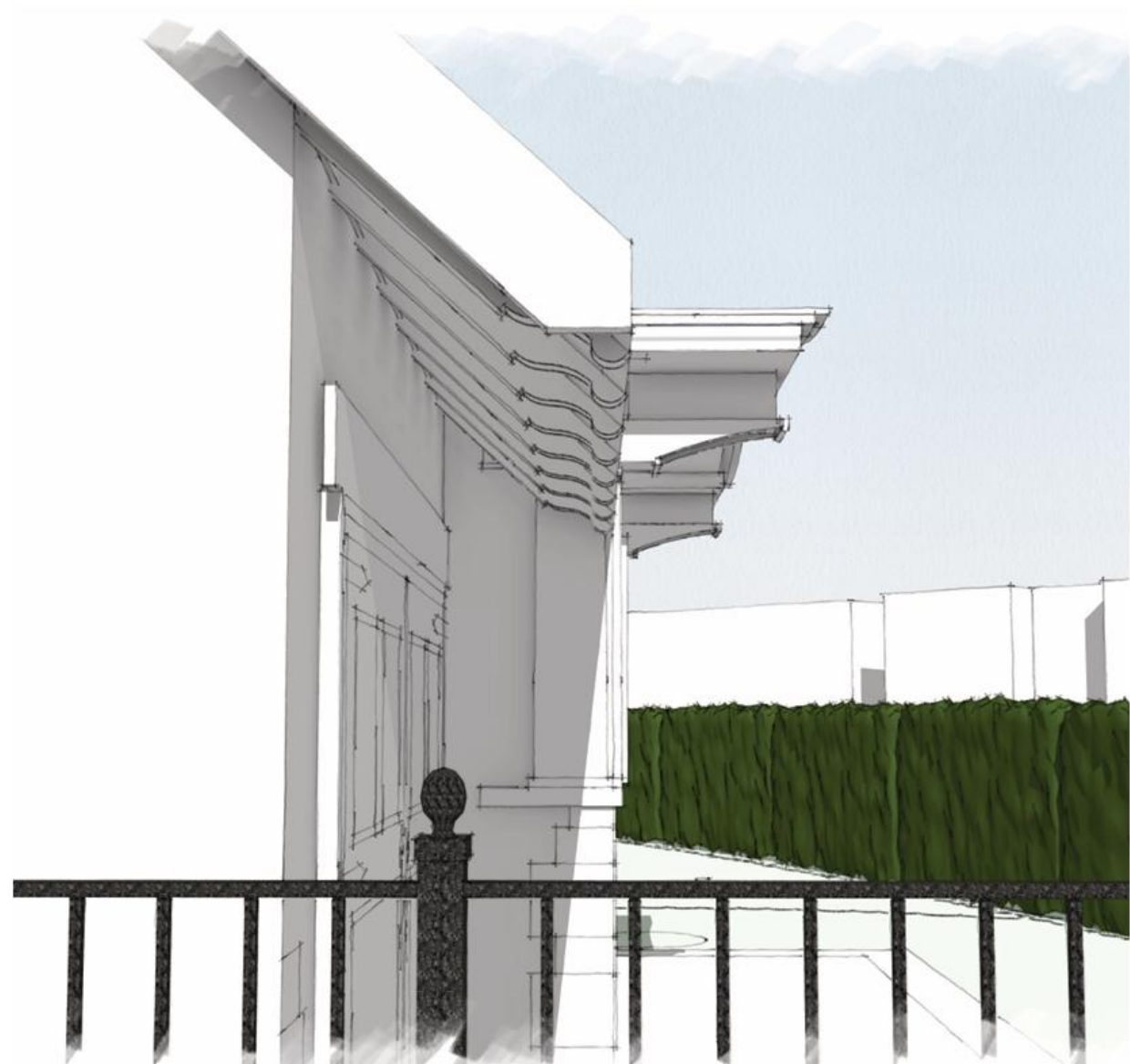
Proposed Site Plan (ERA Architects)

PB44.2
81 Chestnut Park



East elevation drawing (ERA Architects)

PB44.2
81 Chestnut Park



Rendering of partial south elevation showing the setback of the garage (ERA Architects)

PB44.2
81 Chestnut Park



Rendering of proposed carriage house (ERA Architects)