



PB44.5

150 College Street (Medical Sciences Building - 1 King's College Circle) – Alterations to a Designated Heritage Property under Section 33 of the Ontario Heritage Act and Authority to Enter Into a Heritage Easement Agreement

PB44.5

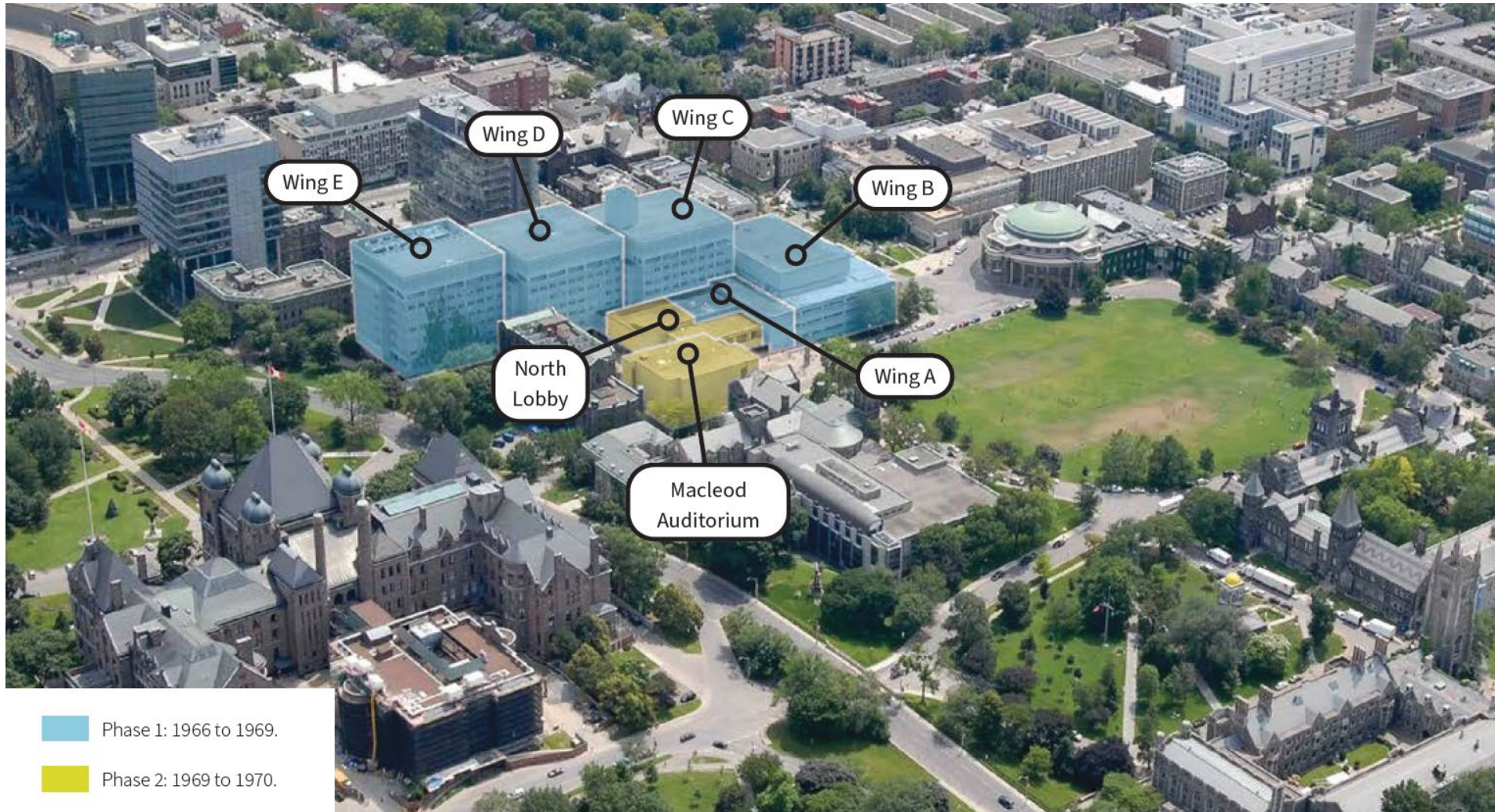
150 College Street (1 King's College Circle)



Location map showing the proposed development site at 150 College Street (1 King's College Circle). The location map is for information purposes only; the boundaries of the property are not shown (City of Toronto Mapping).

PB44.5

150 College Street (1 King's College Circle)



Aerial photograph showing the different wings of the Medical Sciences Building complex (HIA, ERA Architects).

PB44.5
150 College Street (1 King's College Circle)



North elevation of Wing B, looking southwest (Heritage Planning, 2025).



The Medical Sciences Building complex at 1 King's College Circle, north elevation as viewed from King's College Circle lawn, looking southeast (Heritage Planning, 2025).

PB44.5

150 College Street (1 King's College Circle)

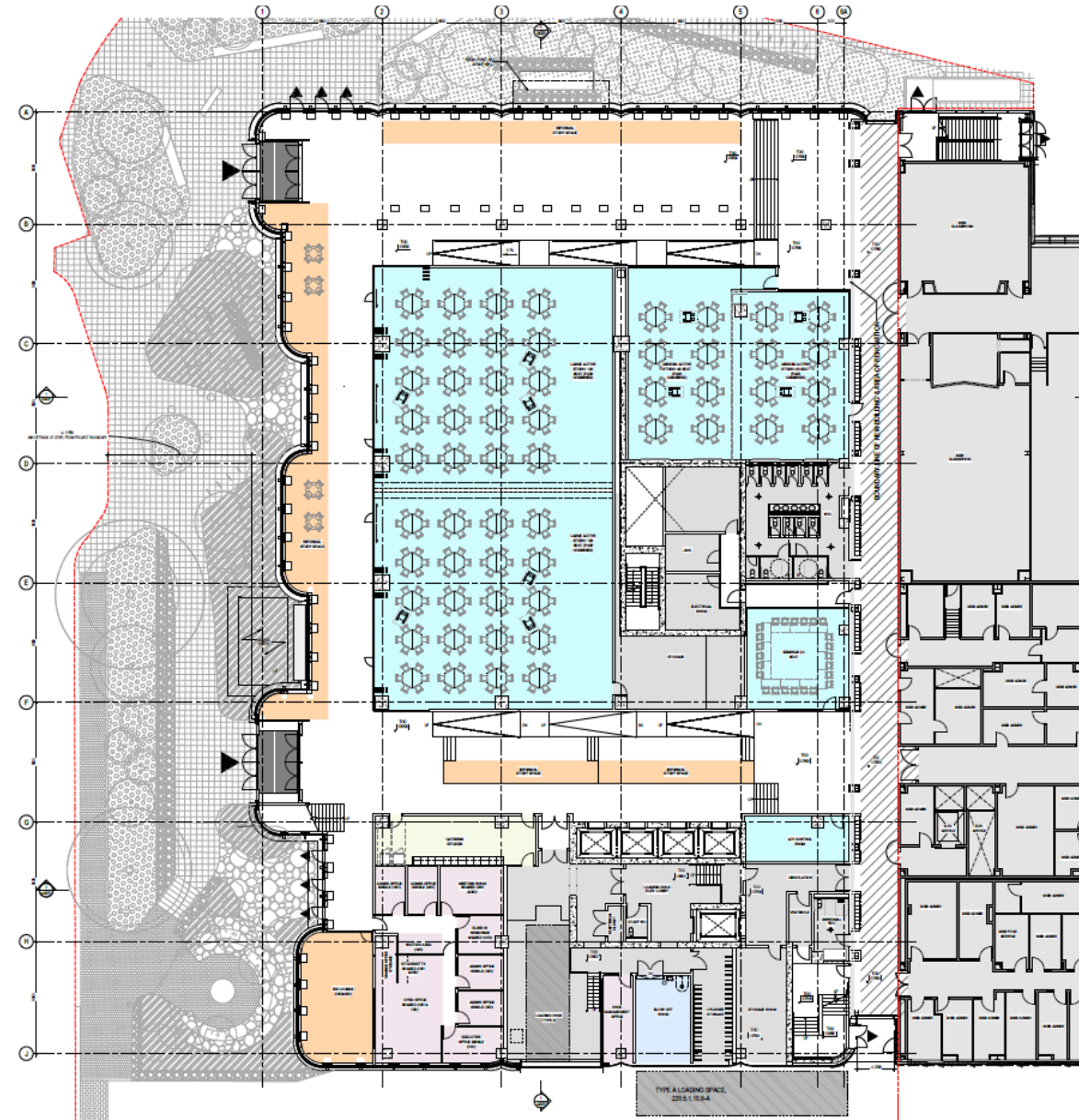


View of the proposed development, looking south (MVRDV/Diamond Schmitt Architects Inc., 2026).

PB44.5
150 College Street (1 King's College Circle)

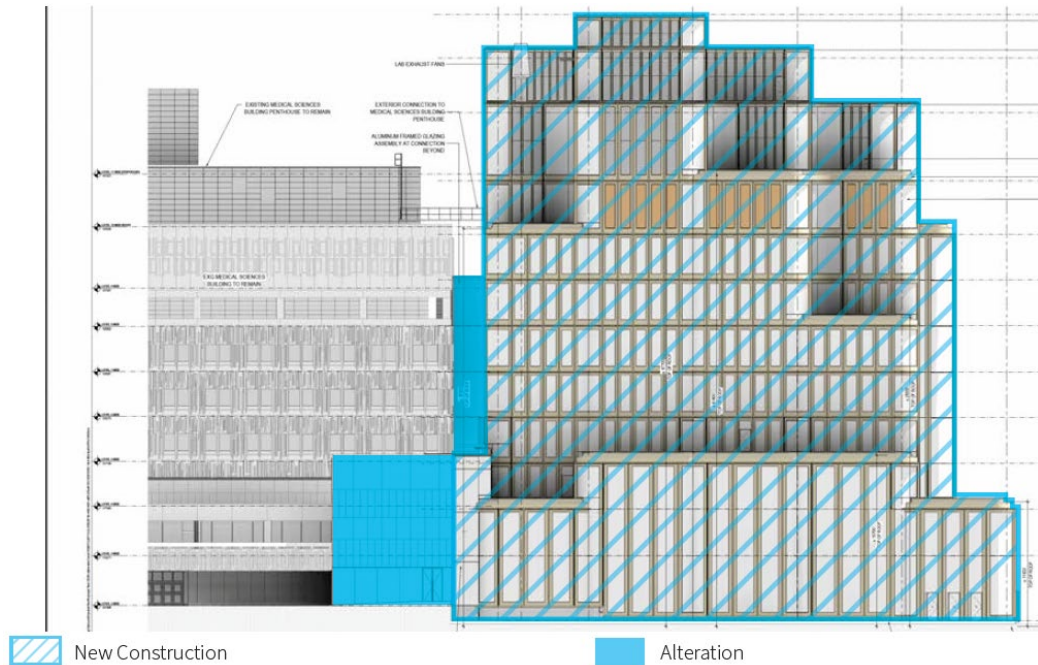


View of the proposed development, looking east across King's College Road (MVRDV/Diamond Schmitt Architects Inc., 2026).

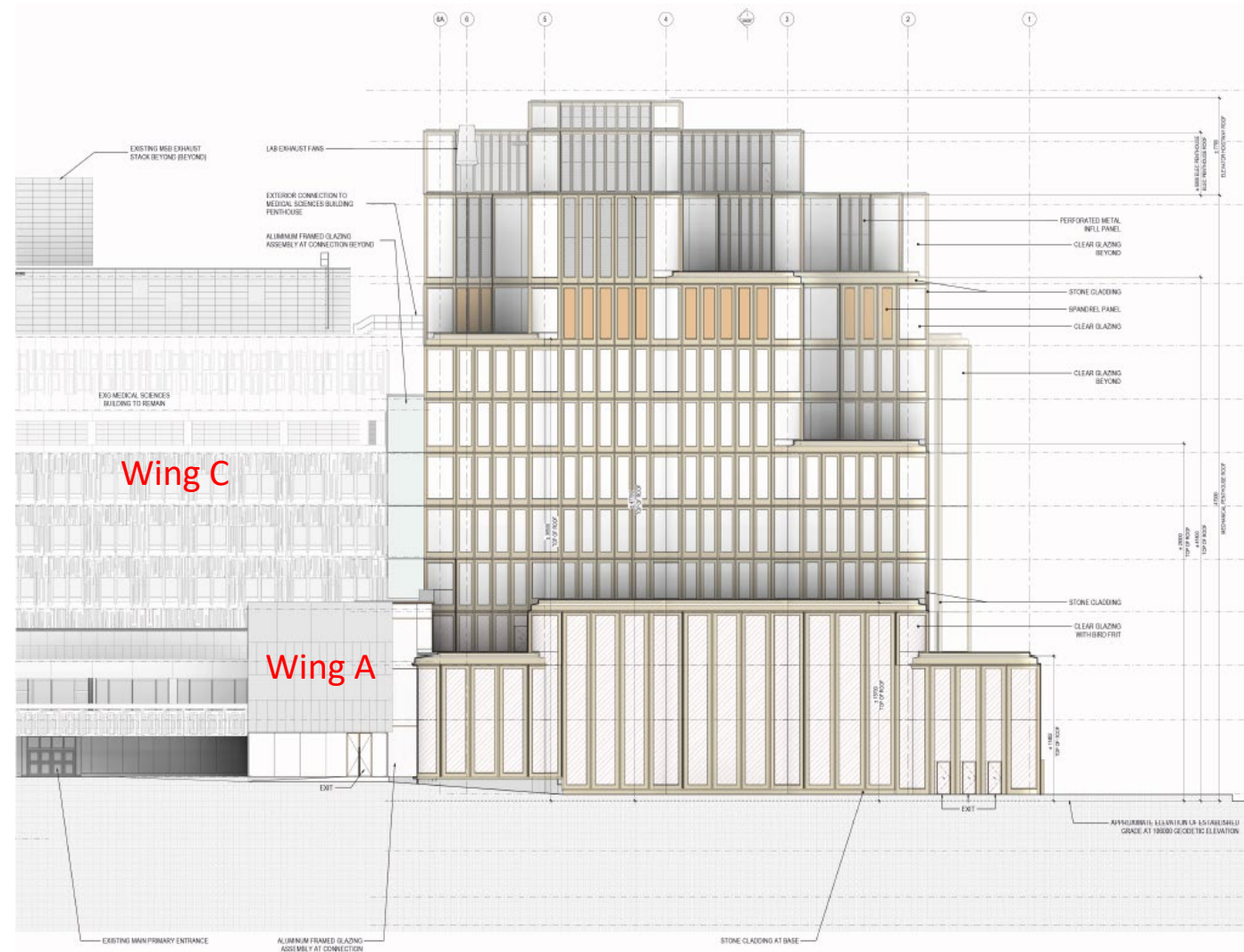


Level 2 (ground) floor plan of the proposed development (MVRDV/Diamond Schmitt Architects Inc., 2026).

PB44.5 150 College Street (1 King's College Circle)



North elevation of the proposed development showing new construction and alterations (HIA, ERA Architects).

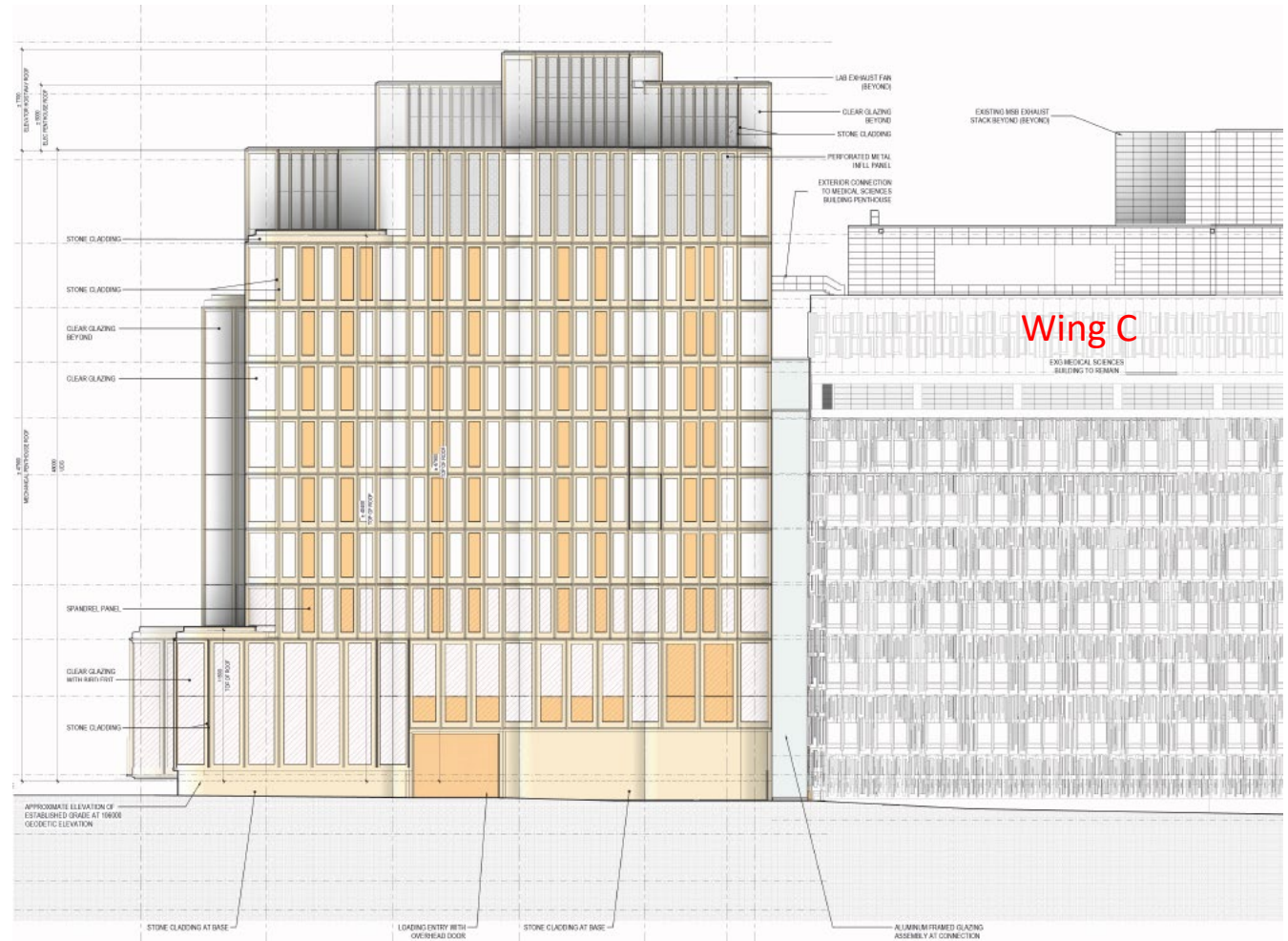


North elevation of the proposed development (MVRDV/Diamond Schmitt Architects Inc., 2026).

PB44.5
150 College Street (1 King's College Circle)

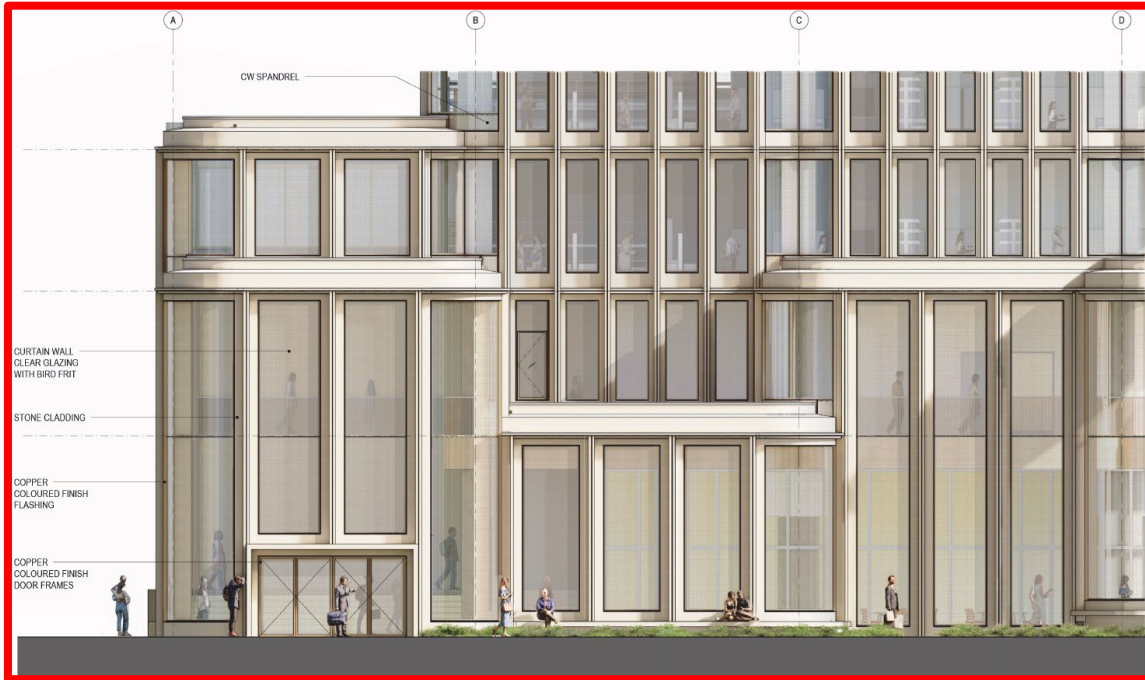


View of the south elevation of the proposal, looking east, showing the consistent built form relationship with Discovery Lane (MVRDV/Diamond Schmitt Architects Inc., 2026).

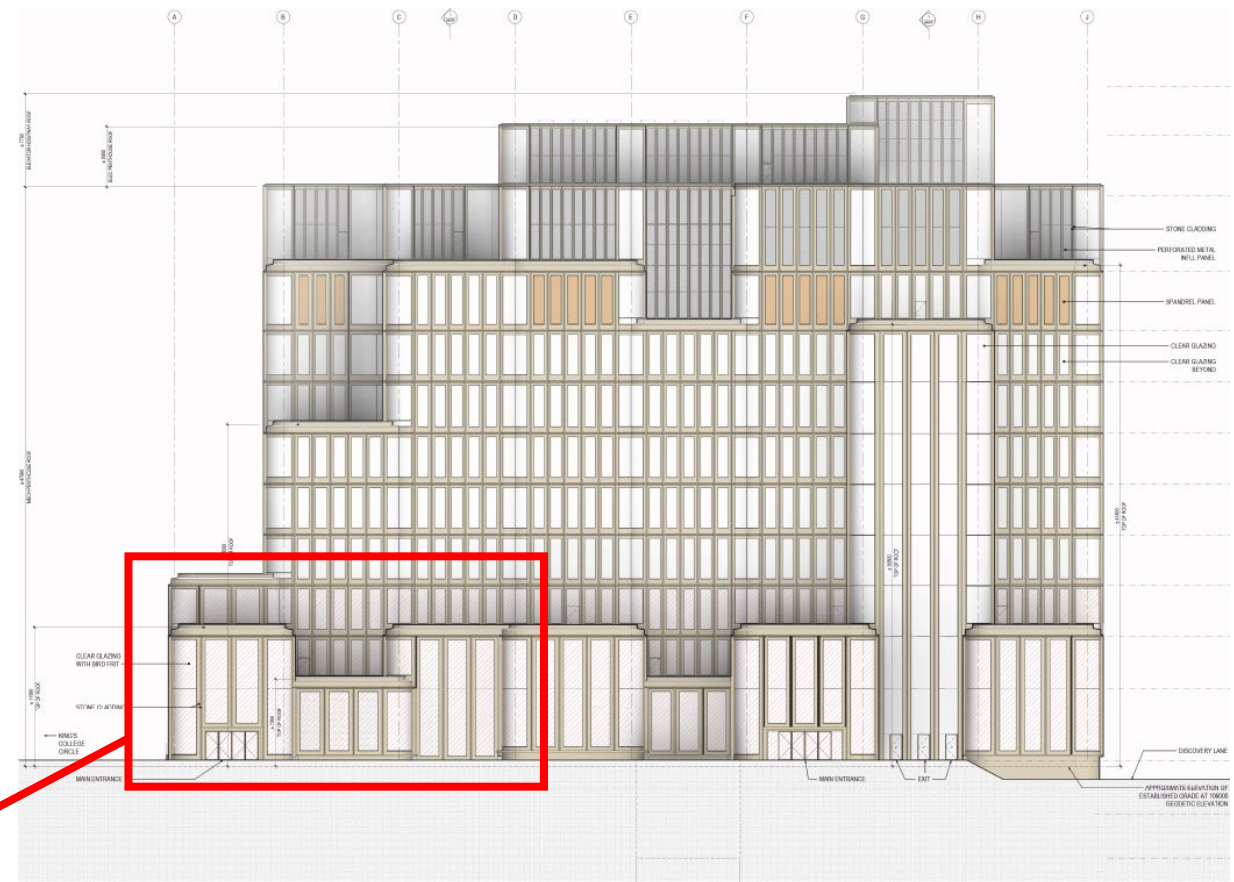


South elevation of the proposed development (MVRDV/Diamond Schmitt Architects Inc., 2026).

PB44.5
150 College Street (1 King's College Circle)



West elevation detail of a portion of the proposed base building (MVRDV/Diamond Schmitt Architects Inc., 2026).

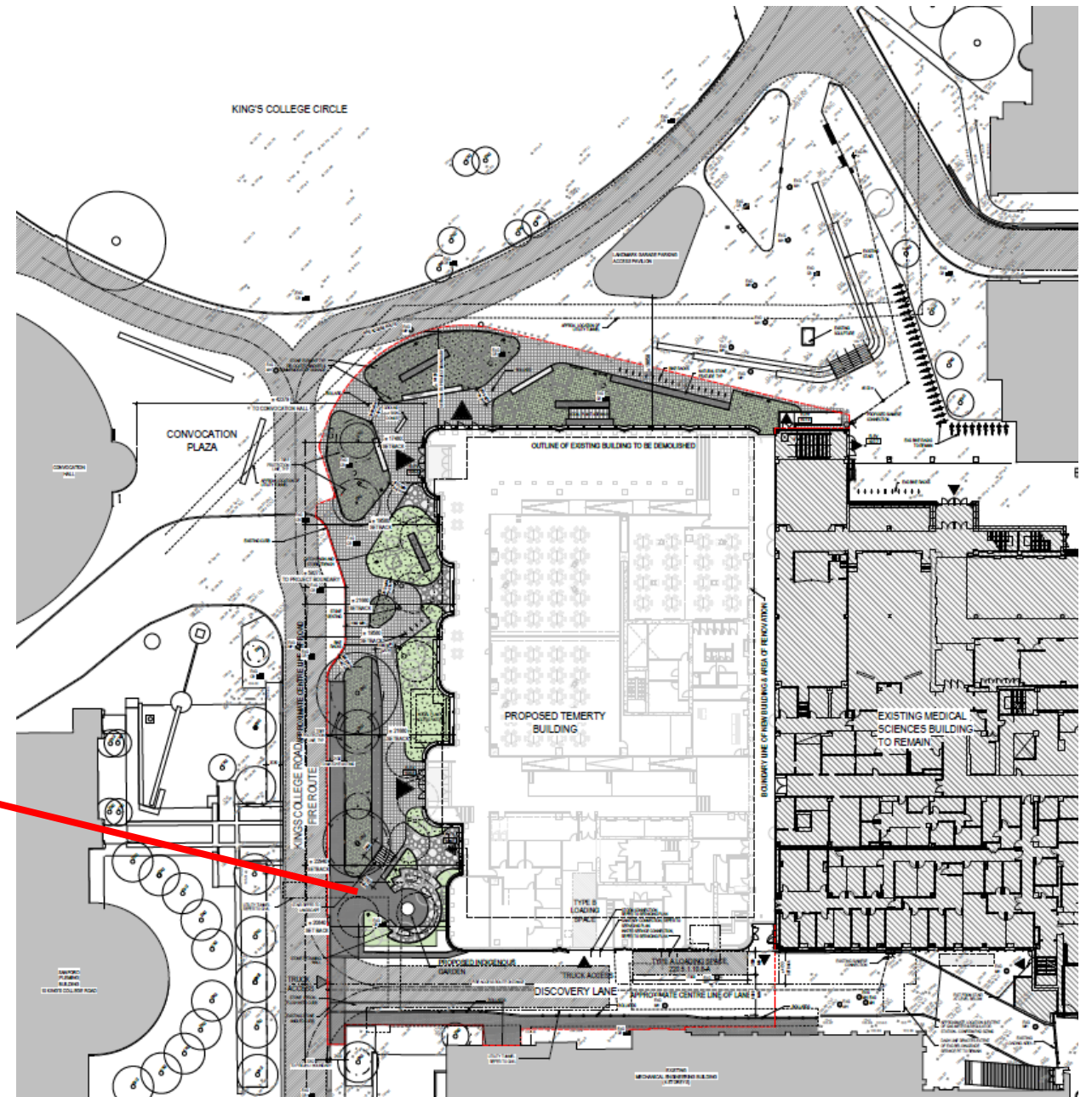


West elevation of the proposed development (MVRDV/Diamond Schmitt Architects Inc., 2026).

PB44.5
150 College Street (1 King's College Circle)



Rendering of the western portion of the proposal, showing the proposed Indigenous Teaching Garden (MVRDV/Diamond Schmitt Architects Inc., 2026).



Site plan of the proposed development (MVRDV/Diamond Schmitt Architects Inc., 2026).

PB44.5

150 College Street (1 King's College Circle)



Rendering of the proposed North Hall (left), conceptually inspired by a Haudenosaunee Longhouse (right) (MVRDV/Diamond Schmitt Architects Inc.; Two Row Architect, 2025) (HIA, ERA Architects).



Rendering of the ground floor elevator lobby and common space, incorporating design elements inspired by Taddle Creek and natural landscapes. (MVRDV/Diamond Schmitt Architects Inc.; Two Row Architect, 2025) (HIA, ERA Architects).