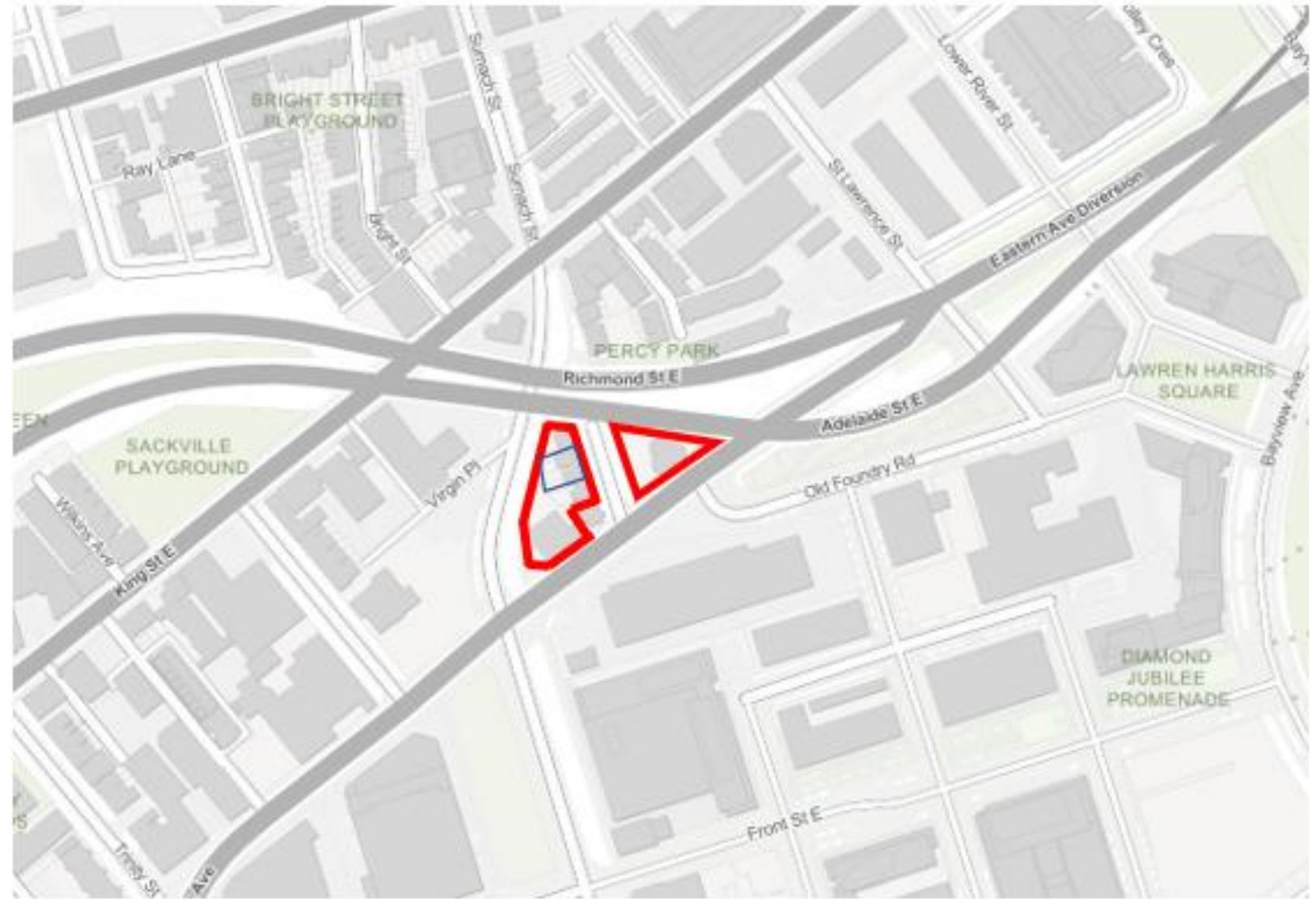




**PB44.8**

**6-8 and 10-12 Sumach Street - Alterations to Designated Heritage Properties Under Section 33 of the Ontario Heritage Act and Authority to Enter into a Heritage Easement Agreement**

**PB44.8**  
**6-8 and 10-12 Sumach Street**



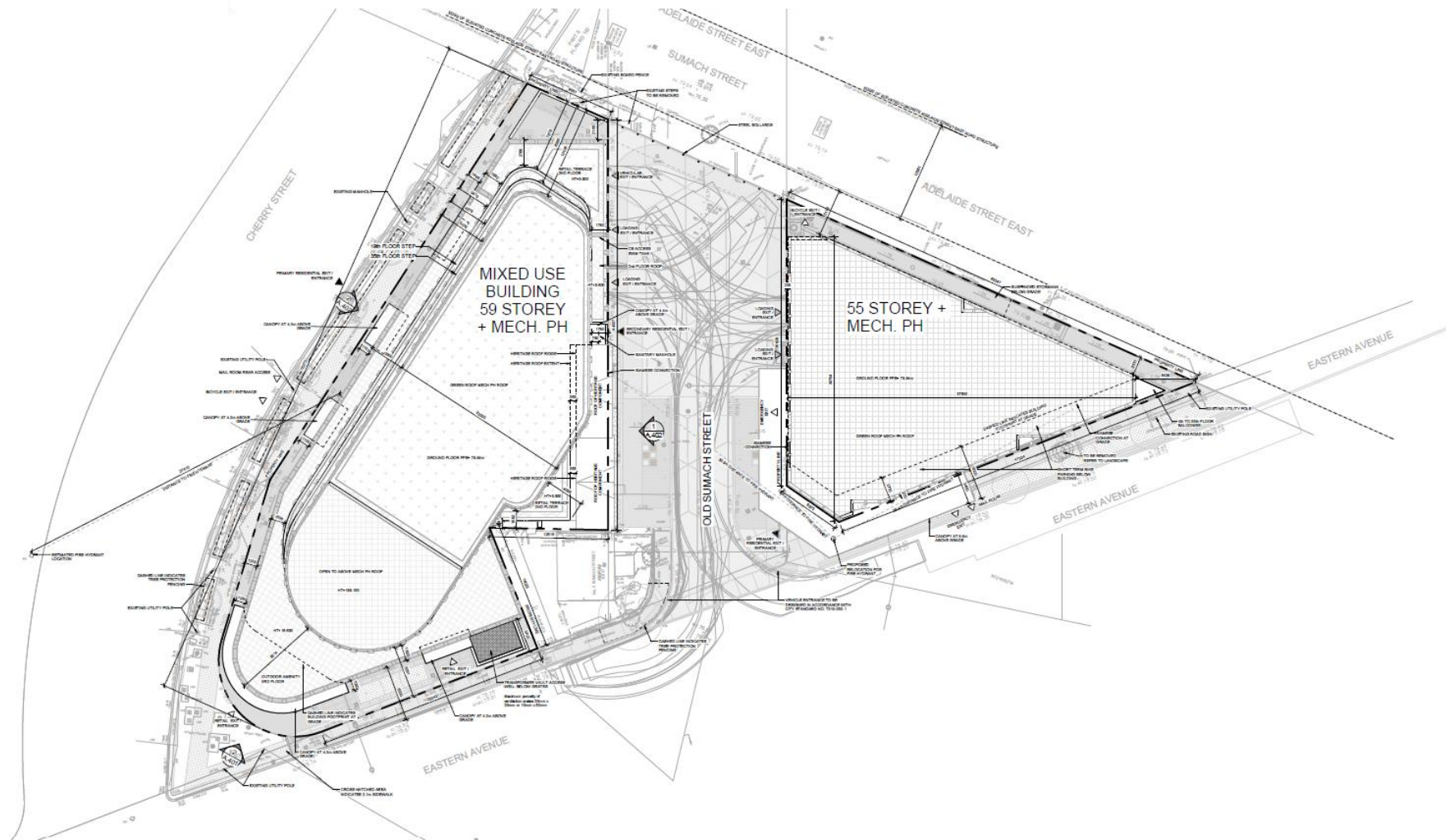
This location map is for information purposes only; the exact boundaries of the property are not shown. The arrow marks the location of the site.



PB44.8  
6-8 and 10-12 Sumach Street

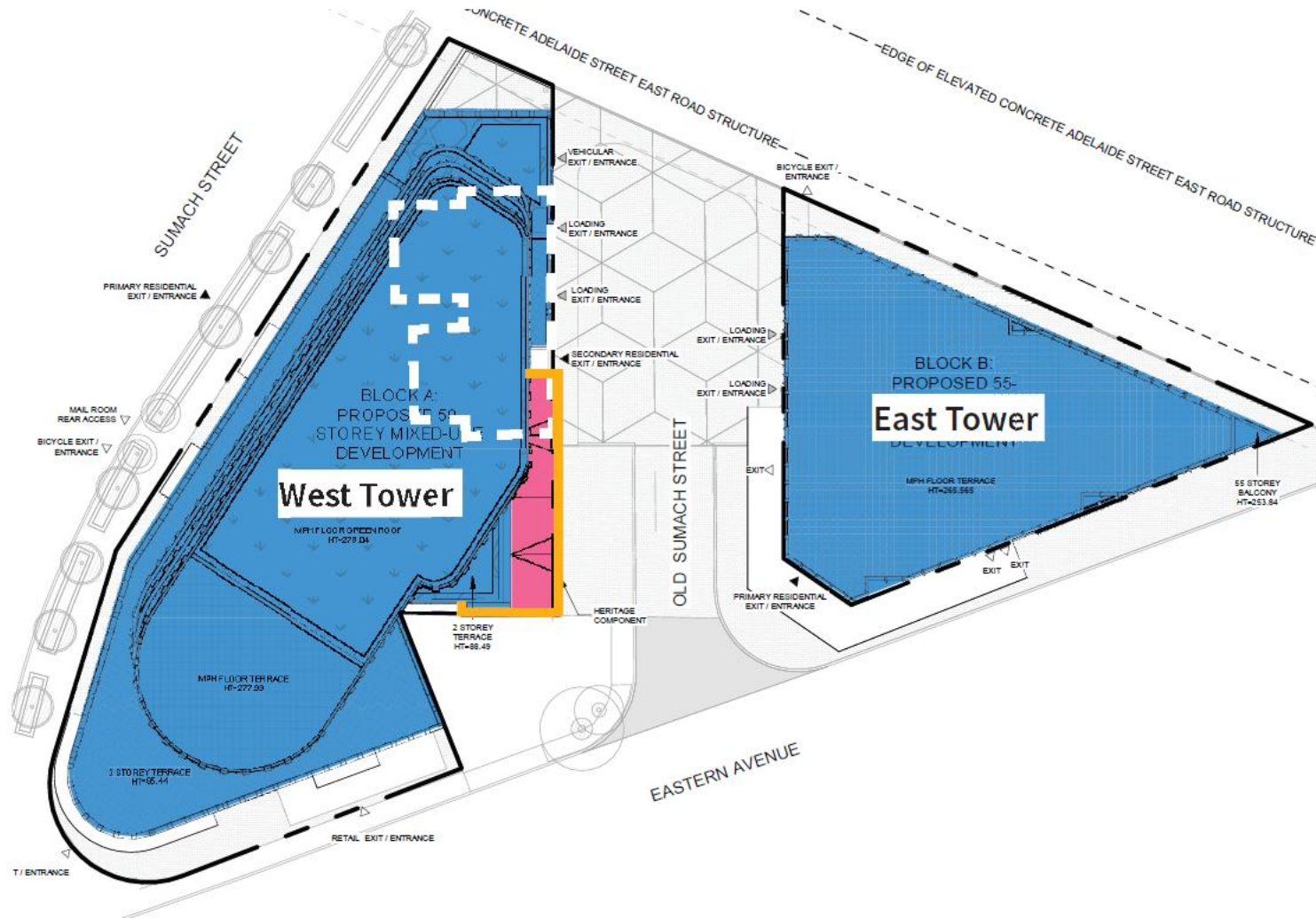


PB44.8  
6-8 and 10-12 Sumach Street



Proposed site plan for 1-16 Sumach Street (RAW Architects Inc., 2026).

PB44.8  
6-8 and 10-12 Sumach Street

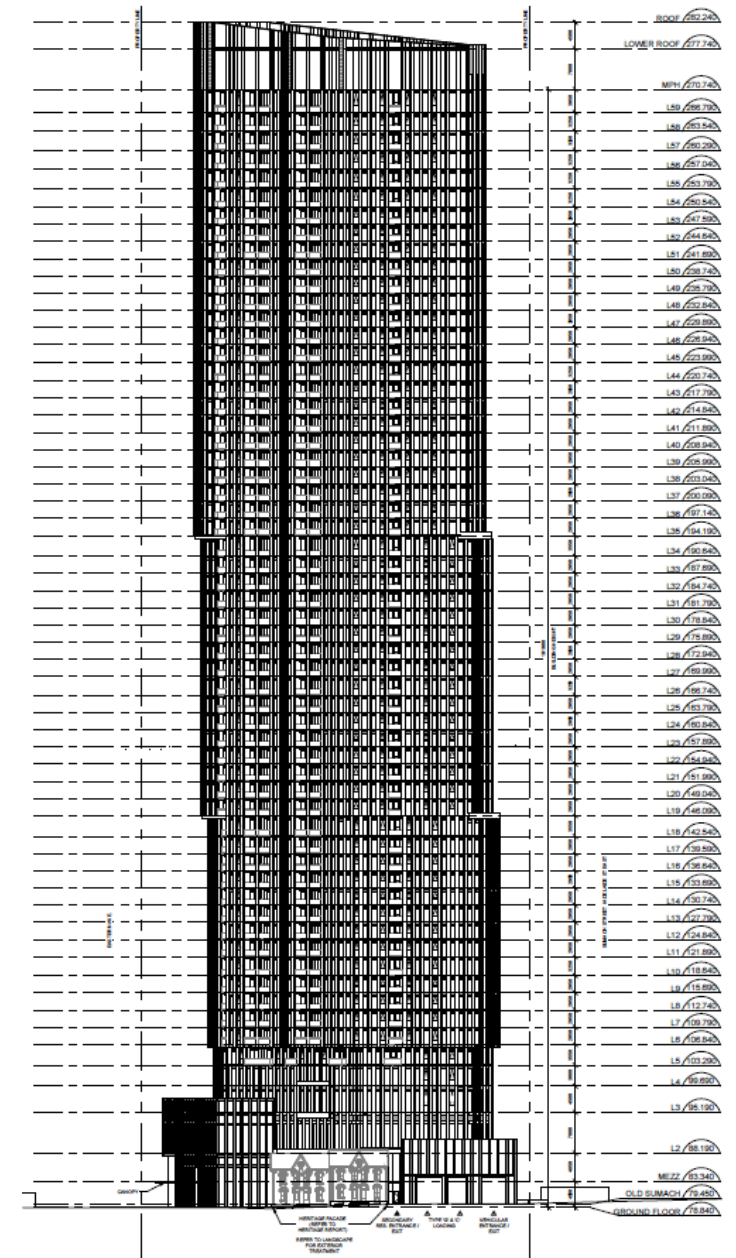


Proposed diagram showing the proposed retention at 1-16 Sumach Street (RAW Architects Inc., annotated by ERA Architects Inc., 2026).

PB44.8  
6-8 and 10-12 Sumach Street



Rendering of 6-12 Sumach Street, looking southwest (RAW Architects Inc., 2026).



East elevation of the west tower (RAW Architects Inc., 2026).

PB44.8  
6-8 and 10-12 Sumach Street



View of 1 Sumach Street, also showing the east (primary) elevations of 6-8 and 10-12 Sumach Street, looking northwest (ERA Architects Inc., 2026).