



PB45.6

64 Wellesley Street East - Alterations to a Designated Heritage Property under Section 33 of the Ontario Heritage Act and Authority to Amend a Heritage Easement Agreement

PB45.6
64 Wellesley Street East



This location map is for information purposes only; the exact boundaries of the property are not shown. The arrow marks the location of the site.



PB45.6
64 Wellesley Street East

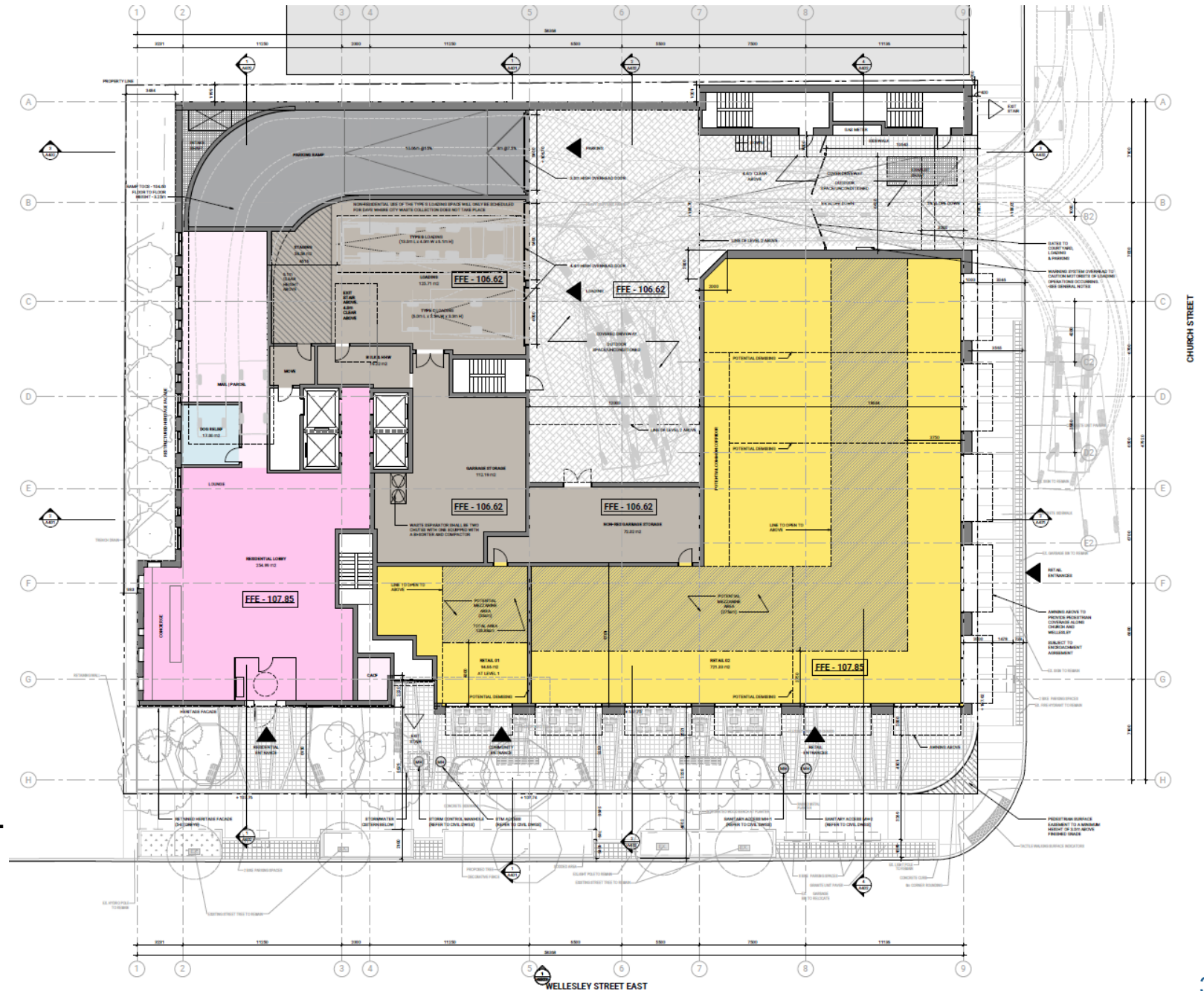


Primary (south) elevation of 64 Wellesley Street East, looking north (ERA Architects Inc., 2026).



Side (west) and the primary (south) elevation of 64 Wellesley Street East, looking northeast (ERA Architects Inc., 2026).

PB45.6 64 Wellesley Street East



Ground floor/site plan for 64 Wellesley Street East (ERA Architects Inc., March 3, 2026).

PB45.6
64 Wellesley Street East

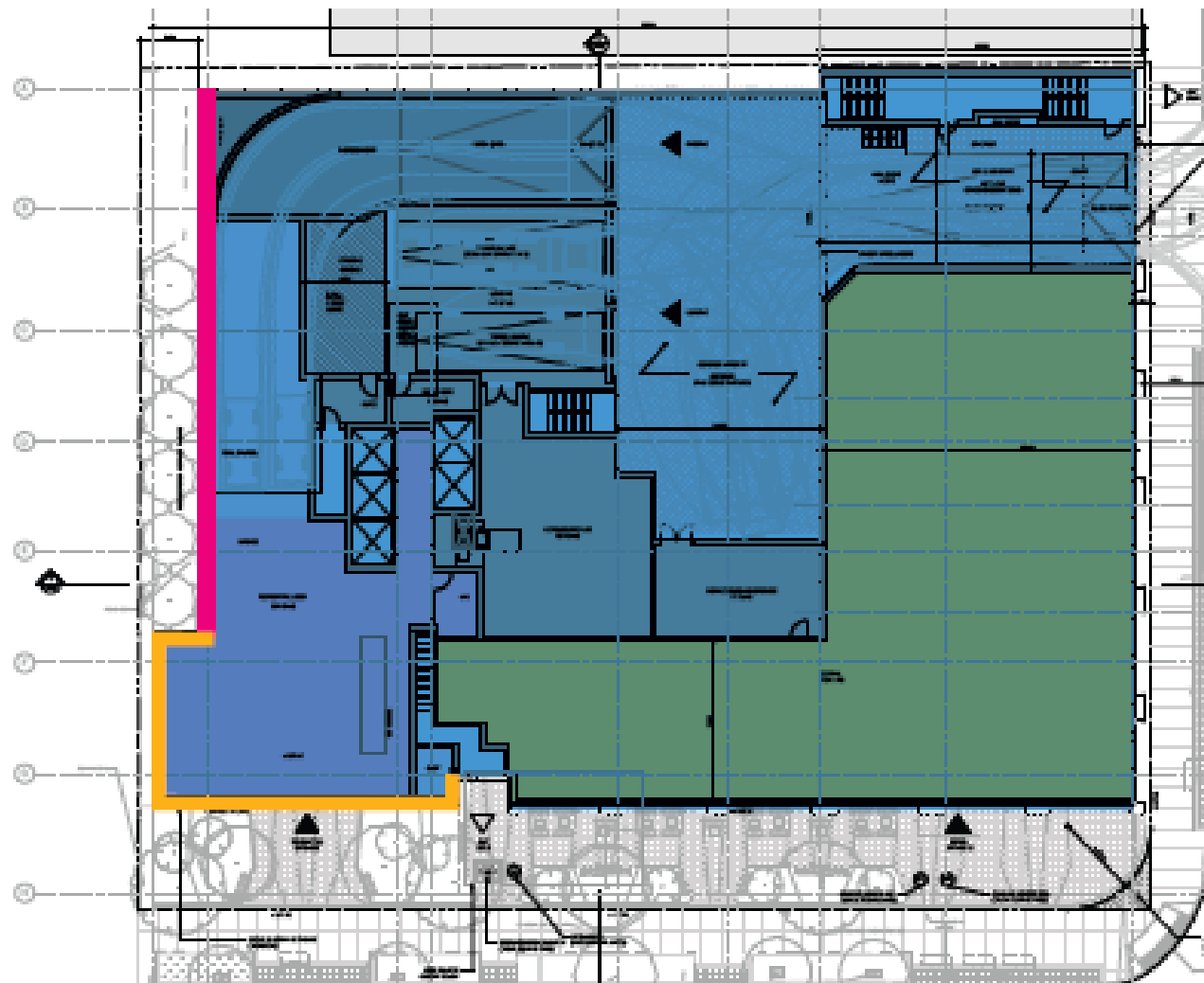
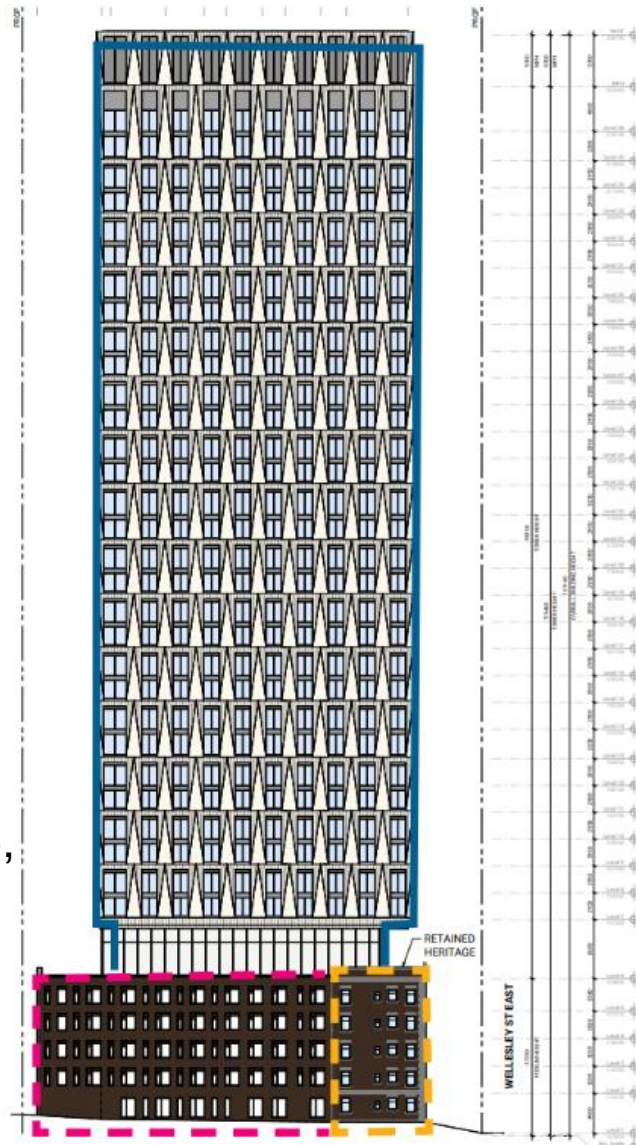


Diagram showing retained elevations, reconstructed elevations, and new construction (Diamond Schmitt Architects Inc., February 6, 2026, annotated by ERA Architects Inc.).

PB45.6
64 Wellesley Street East

West elevation drawing (Diamond Schmitt Architects Inc., February 6, 2026, annotated by ERA Architects Inc.).



Rendered pedestrian eye-level view looking northeast on Wellesley Street East (Diamond Schmitt Architects Inc., February 6, 2026).

PB45.6
64 Wellesley Street East

Rendering of the proposed development, looking northwest (Diamond Schmitt Architects Inc., February 6, 2026).

