

Parking Amendments - Beverly Glen Boulevard

Date: December 18, 2025

To: Scarborough Community Council

From: Director, Enforcement and Street Management, Transportation Services

Wards: Ward 22, Scarborough-Agincourt

SUMMARY

This staff report is about a matter that Community Council has delegated authority from City Council to make a final decision.

Transportation Services is requesting approval to amend the parking regulations on the north side of Beverly Glen Boulevard. The proposed amendment will change the timing of the weekday morning portion of the existing stopping prohibition, currently in effect from 8:00 a.m. to 9:00 a.m., to be in effect from 8:30 a.m. to 9:30 a.m. The proposed amendment will better align with the drop-off time at Beverly Glen Junior Public School, which will help enhance traffic flow during the morning drop-off period and improve safety for all road users in the area.

During the investigation, it was identified that two overlapping bylaws apply to the school bus loading zone on the south side of Beverly Glen Boulevard, in front of Beverly Glen Junior Public School. Recommendation 3 of this report rescinds the older bylaw.

RECOMMENDATIONS

The Director, Enforcement and Street Management, Transportation Services recommends that:

1. Scarborough Community Council amend the existing no stopping regulation on the north side of Beverly Glen Boulevard, between Silver Spruce Drive and a point 67 metres east of Stonebridge Boulevard, in effect from 8:00 a.m. to 9:00 a.m., 11:00 a.m. to 1:00 p.m. and 3:00 p.m. to 4:00 p.m., Monday to Friday, from September 1 of one year to June 30 of the next following year, inclusive, except public holidays, to be in effect from 8:30 a.m. to 9:30 a.m., 11:00 a.m. to 1:00 p.m. and 3:00 p.m. to 4:00 p.m., Monday to Friday, from September 1 of one year to June 30 of the next following year, inclusive, except public holidays.

2. Scarborough Community Council amend the existing no stopping regulation on the north side of Beverly Glen Boulevard, between Silver Spruce Drive and a point 89 metres west, in effect from 8:00 a.m. to 9:00 a.m., 11:00 a.m. to 1:00 p.m. and 3:00 p.m. to 4:00 p.m., Monday to Friday, from September 1 of one year to June 30 of the next following year, inclusive, except public holidays, to be in effect from 8:30 a.m. to 9:30 a.m., 11:00 a.m. to 1:00 p.m. and 3:00 p.m. to 4:00 p.m., Monday to Friday, from September 1 of one year to June 30 of the next following year, inclusive, except public holidays.

3. Scarborough Community Council rescind the existing school bus loading zone regulation, in effect from 8:00 a.m. to 5:00 p.m., on the south side of Beverly Glen Boulevard, between a point 139 metres east of Heatherside Drive and a point 19 metres further east.

FINANCIAL IMPACT

The signage costs associated with the proposed amendments are approximately \$1,500.00. Funding is available within the Transportation Services 2026 Operating Budget.

DECISION HISTORY

On May 29, 2013, Scarborough Community Council adopted Item SC25.15 (School Zone Parking – Beverly Glen Boulevard) to amend the parking regulations fronting Beverly Glen Junior Public School to reduce congestion caused by student pick-up and drop-off activities and to minimize student road crossings. The Scarborough Community Council decision can be found at:

[Agenda Item History - 2013.SC25.15](#)

COMMENTS

Transportation Services staff, at the request of the principal of Beverly Glen Junior Public School and local residents, investigated adjusting the timing of the morning portion of the existing stopping prohibition on the north side of Beverly Glen Boulevard, opposite the school. The regulation, currently in effect from 8:00 a.m. to 9:00 a.m., should be in effect from 8:30 a.m. to 9:30 a.m., to better align with the school's morning entry time.

Existing Conditions

Beverly Glen Boulevard is characterized by the following conditions:

- It is a two-lane, east-west and north-south, collector roadway

- It operates two-way traffic on a pavement width of approximately 8.5 metres
- The daily two-way traffic volume is approximately 2,300 vehicles
- The speed limit is 40 km/h
- U-Turns are prohibited at all times between Heatherside Drive and Bridletown Circle
- Heavy trucks are prohibited at all times
- There is no Toronto Transit Commission (TTC) service provided
- There are sidewalks located on both sides of the street

The surrounding land use is generally residential, consisting of attached and detached dwellings. Beverly Glen Junior Public School, Beverly Glen Park, and Birchcrest Park are located on the south side of the street. Beverly Glen Boulevard, between Heatherside Drive and Bridletown Circle, is designated as a Community Safety Zone.

The parking regulations on Beverly Glen Boulevard are as follows:

Both sides

- No parking from 2:00 a.m. to 6:00 a.m., daily

North side

- No stopping from 8:00 a.m. to 9:00 a.m., 11:00 a.m. to 1:00 p.m. and 3:00 p.m. to 4:00 p.m., Monday to Friday from September 1 of one year to June 30 of the next following year, inclusive, except public holidays, between Silver Spruce Drive and a point 67 metres east of Stonebridge Boulevard, and between Silver Spruce Drive and a point 89 metres west
- Maximum three-hour statutory parking at all other times, where permitted

South side

- Parking for a maximum period of 15 minutes from 8:00 a.m. to 4:00 p.m., Monday to Friday from September 1 of one year to June 30 of the next following year, inclusive, except public holidays, between a point 15 metres east of Heatherside Drive and a point 50 metres further east, and between a point 242.5 metres east of Heatherside Drive and a point 52 metres further east
- No standing anytime, between a point 171 metres east of Heatherside Drive and a point 29 metres further east
- No stopping anytime, between a point 65 metres east of Heatherside Drive and a point 62 metres further east, and between a point 200 metres east of Heatherside Drive and a point 42.5 metres further east
- School bus loading zone from 8:00 a.m. to 5:00 p.m., between a point 139 metres east of Heatherside Drive and a point 19 metres further east
- School bus loading zone from 8:00 a.m. to 5:00 p.m., between a point 127 metres east of Heatherside Drive and a point 44 metres further east
- Maximum three-hour statutory parking at all other times, where permitted

Proposed Changes

The adjustment of the existing stopping prohibition on the north side of Beverly Glen Boulevard, opposite Beverly Glen Junior Public School, to better align with the school's morning entry time is feasible and will reduce the congestion during the morning drop-off period and improve safety for all road users in this area.

A map of the area and proposed parking amendments is included in Attachment 1.

Housekeeping Issues

Transportation Services also identified two overlapping bylaws apply to the school bus loading zone on the south side of Beverly Glen Boulevard, in front of Beverly Glen Junior Public School. Recommendation 3 of this report rescinds the older by-law, as its provisions are already covered within the limits of the newer by-law.

The Ward Councillor has been advised of the recommendations of this staff report.

CONTACT

Dan Clement, CET, Manager Traffic Operations (Area 1), Transportation Services
416-396-3226, Dan.Clement@toronto.ca

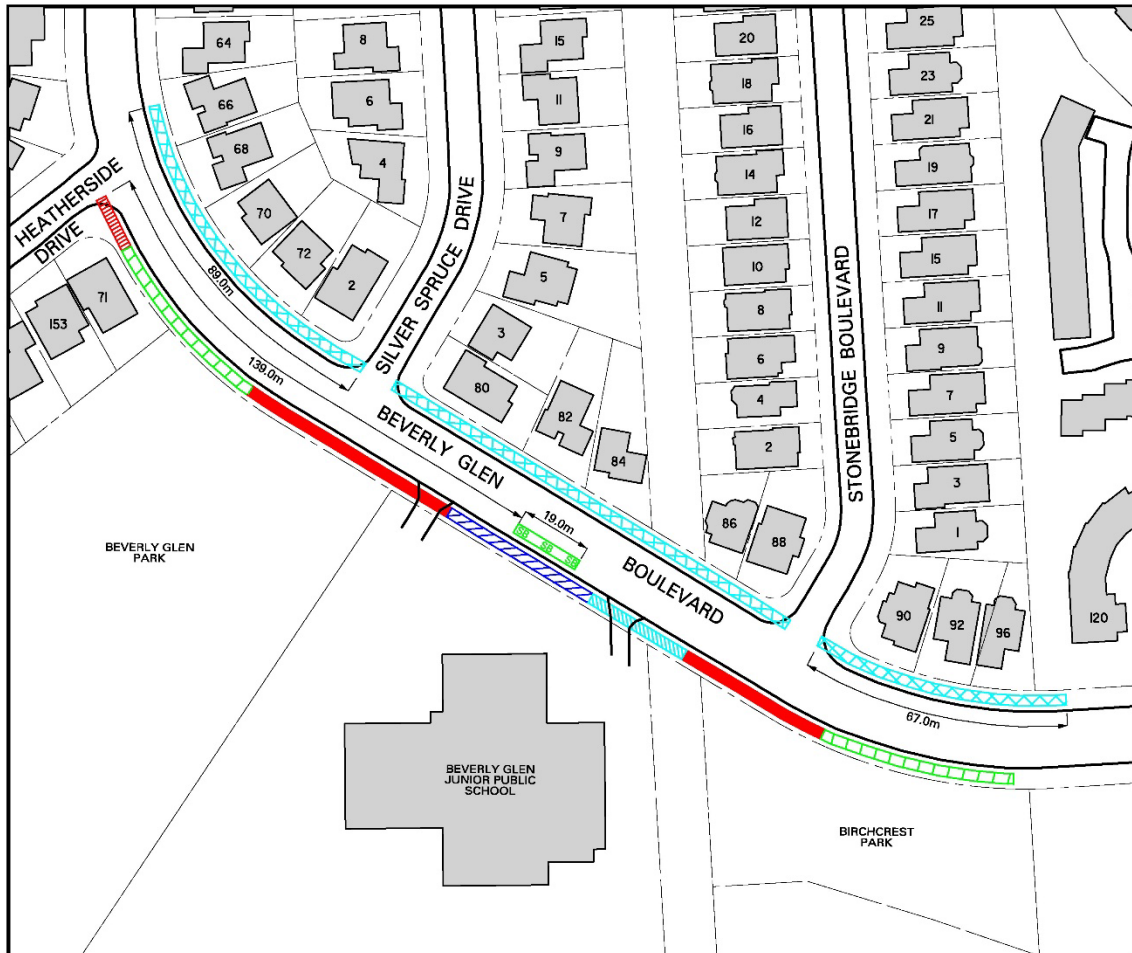
SIGNATURE








Mike Barnet, P. Eng.
Director, Enforcement and Street Management, Transportation Services

ATTACHMENTS

Attachment 1: Map - Parking Amendments - Beverly Glen Boulevard

Attachment 1: Map - Parking Amendments - Beverly Glen Boulevard



-  EXISTING NO STOPPING, 8:00 a.m. TO 9:00 a.m., 11:00 a.m. TO 1:00 p.m., AND 3:00 p.m. TO 4:00 p.m., MONDAY TO FRIDAY FROM SEPTEMBER 1st OF ONE YEAR TO JUNE 30th OF THE NEXT FOLLOWING YEAR, INCLUSIVE, EXCEPT PUBLIC HOLIDAYS TO BE AMENDED.
PROPOSED NO STOPPING, 8:30 a.m. TO 9:30 a.m. ALL OTHERS TIME AND DATE WILL BE REMAINED.
-  EXISTING SCHOOL BUS LOADING ZONES, 8:00 a.m. TO 5:00p.m. TO BE RESCINDED.
-  EXISTING NO PARKING ANYTIME
-  EXISTING RESTRICTED 15 MIN PARKING, 8:00 a.m. TO 4:00 p.m., MONDAY TO FRIDAY FROM SEPTEMBER 1st OF ONE YEAR TO JUNE 30th OF THE FOLLOWING YEAR, INCLUSIVE, EXCEPT PUBLIC HOLIDAYS.
-  EXISTING NO STOPPING ANYTIME
-  EXISTING SCHOOL BUS LOADING ZONES, 8:00 a.m. TO 5:00 p.m.
-  EXISTING NO STANDING ANYTIME



PARKING AMENDMENTS BEVERLY GLEN BOULEVARD



FILE NO. 421T-1053

SCALE : N. T. S.

DRAWN BY : O. K.

DATE : NOV. 2025