

## **Traffic Calming (Speed Humps) - Bennett Road and Dunstall Crescent**

**Date:** May 13, 2026

**To:** Scarborough Community Council

**From:** Director, Enforcement and Street Management, Transportation Services

**Wards:** Ward 25, Scarborough-Rouge Park

### **SUMMARY**

---

This staff report is about a matter that Scarborough Community Council has delegated authority from City Council to make a final decision.

Transportation Services is recommending the installation of speed humps on the two streets sections listed below.

- Bennett Road, between Lawrence Avenue East and the south end of Bennett Road
- Dunstall Crescent, between Bennett Road and Beechgrove Drive

Staff's assessment indicates the criteria as set out in the updated Traffic Calming Policy has been satisfied for both streets. Therefore, speed humps should be installed on the subject sections of Bennett Road and Dunstall Crescent.

### **RECOMMENDATIONS**

---

The Director, Enforcement and Street Management, Transportation Services recommends that:

1. Scarborough Community Council authorize the installation of traffic calming (nine speed humps) on Bennett Road, between Lawrence Avenue East and the south end of Bennett Road, generally as shown in the Attachments 3 and 4, Drawing Nos. TC-693 and TC-693-1, dated May 2026, from the Director, Enforcement and Street Management, Transportation Services.

2. Scarborough Community Council authorize the installation of traffic calming (seven speed humps) on Dunstall Crescent, between Bennett Road and Beechgrove Drive, generally as shown in the Attachments 5 and 6, Drawing No. TC-694 and TC-694-1, dated May 2026, from the Director, Enforcement and Street Management, Transportation Services.

3. Subject to approval of Recommendation 1 above, Scarborough Community Council reduce the speed limit from 40 km/h to 30 km/h on Bennett Road, between Lawrence Avenue East and the south end of Bennett Road, in conjunction with the installation of speed humps.

4. Subject to approval of Recommendation 2 above, Scarborough Community Council reduce the speed limit from 40 km/h to 30 km/h on Dunstall Crescent, between Bennett Road and Beechgrove Drive, in conjunction with the installation of speed humps.

## **FINANCIAL IMPACT**

---

The estimated cost for installing a total of 16 speed humps on Bennett Road and Dunstall Crescent is \$64,000.00. Funding is subject to availability and competing priorities within the Transportation Services 2026 Capital Budget.

The estimated cost by street is as follows:

- Nine speed humps on Bennett Road, between Lawrence Avenue East and the south end of Bennett Road, costing \$36,000.00
- Seven speed humps on Dunstall Crescent, between Bennett Road and Beechgrove Drive, costing \$28,000.00

## **DECISION HISTORY**

---

Scarborough Community Council, at its meeting on May 6, 2008, adopted Item SC15.16 (Speed Limit Regulation Housekeeping on Bennett Road) authorizing the 40 kilometres per hour speed limit on Bennett Road. The Scarborough Community Council decision can be found at:

[Agenda Item History - 2008.SC15.16](#)

## **COMMENTS**

---

Transportation Services received a request from the Ward Councillor, on behalf of area residents, to investigate the feasibility of installing speed humps on Bennett Road, between Lawrence Avenue East and the south end of Bennett Road, and on Dunstall Crescent, between Bennett Road and Beechgrove Drive. The residents of these streets are concerned that motorists travel at a high rate of speed.

## **A. Bennett Road**

### **Existing Conditions**

Bennett Road, between Lawrence Avenue East and the south end of Bennett Road, is characterized by the following conditions:

- It is a two-lane, north-south, local roadway
- It operates two-way traffic on a pavement width of approximately 8.5 metres
- The daily two-way traffic volume is approximately 1,300 vehicles
- The speed limit is 40 km/h. Transportation Services advises that the speed limit is planned to be reduced to 30 km/h on this street by 2026+, consistent with Item 2019.IE6.8 (Vision Zero 2.0 – Road Safety Plan Update)
- Heavy trucks are prohibited at all times, between Lawrence Avenue East and Ravenview Drive
- There is no Toronto Transit Commission (TTC) service provided
- There are sidewalks located on both sides of the street, except the section between the south end of Bennett Road and a point approximately 47 metres north, where the sidewalk is located on the east side only
- There is a pedestrian crossover located approximately 65 metres south of Dunstall Crescent

The land use in the area consists of single-family residential dwellings, Woodgrove Ravine Park, Beechgrove Park, as well as William G Miller Public School and St. Malachy Catholic School. There is a commercial plaza located west of Bennett Road at the north end of the street. The subject section of Bennett Road is within a designated Community Safety Zone.

A map of the area and proposed locations of the speed humps are included in Attachments 3 and 4.

### **Study Results**

As part of the assessment of the warrant criteria, a vehicle speed and volume study was conducted on Bennett Road from May 9 to 11, 2023.

The study results on Bennett Road disclosed the following:

- 24-hour total vehicle volume is approximately 1,300 vehicles
- The block length from Lawrence Avenue East to the south end of Bennett Road is 624 metres
- The operating speed, which is the speed at which 85 percent of traffic is travelling at or below, was observed at 47 km/h
- The 95th percentile speed, which is the speed at which 95 percent of traffic is travelling at or below, was observed at 51 km/h

Based on the study results, Bennett Road, between Lawrence Avenue East and the south end of Bennett Road, has satisfied the warrant criteria for both minimum block length and minimum vehicle speed. The block length was greater than 120 metres, the operating speed is 17 km/h over the warranted speed of 30 km/h and the 95th percentile is 21 km/h over the warranted speed of 30 km/h.

The overall investigation concluded that the eligibility and warrant criteria outlined in the Traffic Calming Policy have been satisfied. Therefore, staff recommend the installation of speed humps on Bennett Road.

## **B. Dunstall Crescent**

### **Existing Conditions**

Dunstall Crescent, between Bennett Road and Beechgrove Drive, is characterized by the following conditions:

- It is a two-lane, east-west and north-south, local roadway
- It operates two-way traffic on a pavement width of 8.5 metres
- The daily two-way traffic volume is approximately 350 vehicles
- The speed limit is 40 km/h. Transportation Services advises that the speed limit is planned to be reduced to 30 km/h on this street by 2026+, consistent with Item 2019.IE6.8 (Vision Zero 2.0 – Road Safety Plan Update)
- Heavy trucks are prohibited at all times
- There is no Toronto Transit Commission (TTC) service provided
- There are sidewalks located on both sides of the street, between Bennett Road and a point approximately 60 metres east of Ravenview Drive, and there are no sidewalks on either side of the street, between a point approximately 60 metres east of Ravenview Drive and Beechgrove Drive

The land use in the area consists of single-family residential dwellings and Beechgrove Park. The subject section of Dunstall Crescent is not within a designated Community Safety Zone.

A map of the area and proposed locations of the speed humps are included in Attachments 5 and 6.

### **Study Results**

As part of the assessment of the warrant criteria, a vehicle speed and volume study was conducted on Dunstall Crescent from October 22 to 24, 2024.

The study results on Dunstall Crescent disclosed the following:

- 24-hour total vehicle volume is approximately 350 vehicles
- The block length from Bennett Road and Beechgrove Drive is 574 metres
- The operating speed, which is the speed at which 85 percent of traffic is travelling at or below, was observed at 38 km/h
- The 95th percentile speed, which is the speed at which 95 percent of traffic is travelling at or below, was observed at 43 km/h

Based on the study results, Dunstall Crescent, between Bennett Road and Beechgrove Drive, has satisfied the warrant criteria for both minimum block length and minimum vehicle speed. The block length was greater than 120 metres, the operating speed is 8 km/h over the warranted speed of 30 km/h and the 95th percentile is 13 km/h over the warranted speed of 30 km/h.

The overall investigation concluded that the eligibility and warrant criteria outlined in the Traffic Calming Policy have been satisfied. Therefore, staff recommend the installation of speed humps on Dunstall Crescent.

## **Relative Priority and Other Impacts**

In the event that the number of approved requests for roadway traffic calming measures exceed the budget allocated for installation, funding for approved installations will be prioritized using a Prioritization Score. This score is made up of a Quantitative Score and a Qualitative Score.

The Quantitative Score is based on the results of the data collection, including travel speeds and traffic volumes to prioritize locations with higher vehicle speeds and volumes.

The Qualitative Score includes:

- Collision history to prioritize locations with a history of serious injury or fatal collisions and those involving a pedestrian or person cycling
- Equity to prioritize equity-deserving communities with a high-concentration of priority populations and those that are transportation disadvantaged
- Expected presence of vulnerable road users (elderly population, school children and pedestrians, including transit riders) to prioritize locations with a higher risk of fatal and serious injury collisions

The Quantitative and Qualitative Scores are averaged to provide the complete Prioritization Score. Bennett Road, Lawrence Avenue East and the south end of Bennett Road, scored 23 ranking points out of a possible 100. Dunstall Crescent, between Bennett Road and Beechgrove Drive, scored 13 ranking points out of a possible 100.

No alterations to parking regulations will be required on any streets, nor will the number of parking spaces be affected by the installation of speed humps. Installation of speed humps will have minimal effect on winter services, street cleaning, and garbage collection.

## **Consultation with Emergency Services**

Consultation with emergency services (Toronto Police Service, Toronto Fire Services and Toronto Paramedic Services) is required to ensure that the design and layout of a traffic calming proposal does not unduly affect their operations. Emergency services were advised of this proposal.

Toronto Paramedic Services responded and advised they support the installation of speed humps, however, there are concerns that it may negatively impact their service delivery. A copy of their full response is included in Attachment 7. Toronto Fire Services and Toronto Police Service have not provided comments back at the time of writing this report. Installing speed humps will result in slower operating speeds for all vehicles, including emergency service vehicles.

The Ward Councillor has been advised of the recommendations in this report.

## **CONTACT**

---

Dan Clement, CET, Manager Traffic Operations (Area 1), Transportation Services  
416-396-3226, [Dan.Clement@toronto.ca](mailto:Dan.Clement@toronto.ca)

## **SIGNATURE**

---

Mike Barnet, P. Eng.  
Director, Enforcement and Street Management, Transportation Services

## **ATTACHMENTS**

---

- Attachment 1: Traffic Calming Warrant – Bennett Road, between Lawrence Avenue East and the south end of Bennett Road
- Attachment 2: Traffic Calming Warrant – Dunstall Crescent, between Bennett Road and Beechgrove Drive
- Attachment 3: Speed Hump Locations Plan – Bennett Road, Woodgrove Drive - Lawrence Avenue East (Matchline, see drawing TC-693-1)
- Attachment 4: Speed Hump Locations Plan – Bennett Road, Woodgrove Drive - Lawrence Avenue East
- Attachment 5: Speed Hump Locations Plan – Dunstall Crescent, Beechgrove Drive – Bennett Road (Matchline, see drawing TC-694-1)
- Attachment 6: Speed Hump Locations Plan – Dunstall Crescent, Beechgrove Drive – Bennett Road
- Attachment 7: Letter from Toronto Paramedic Services, dated April 24, 2026

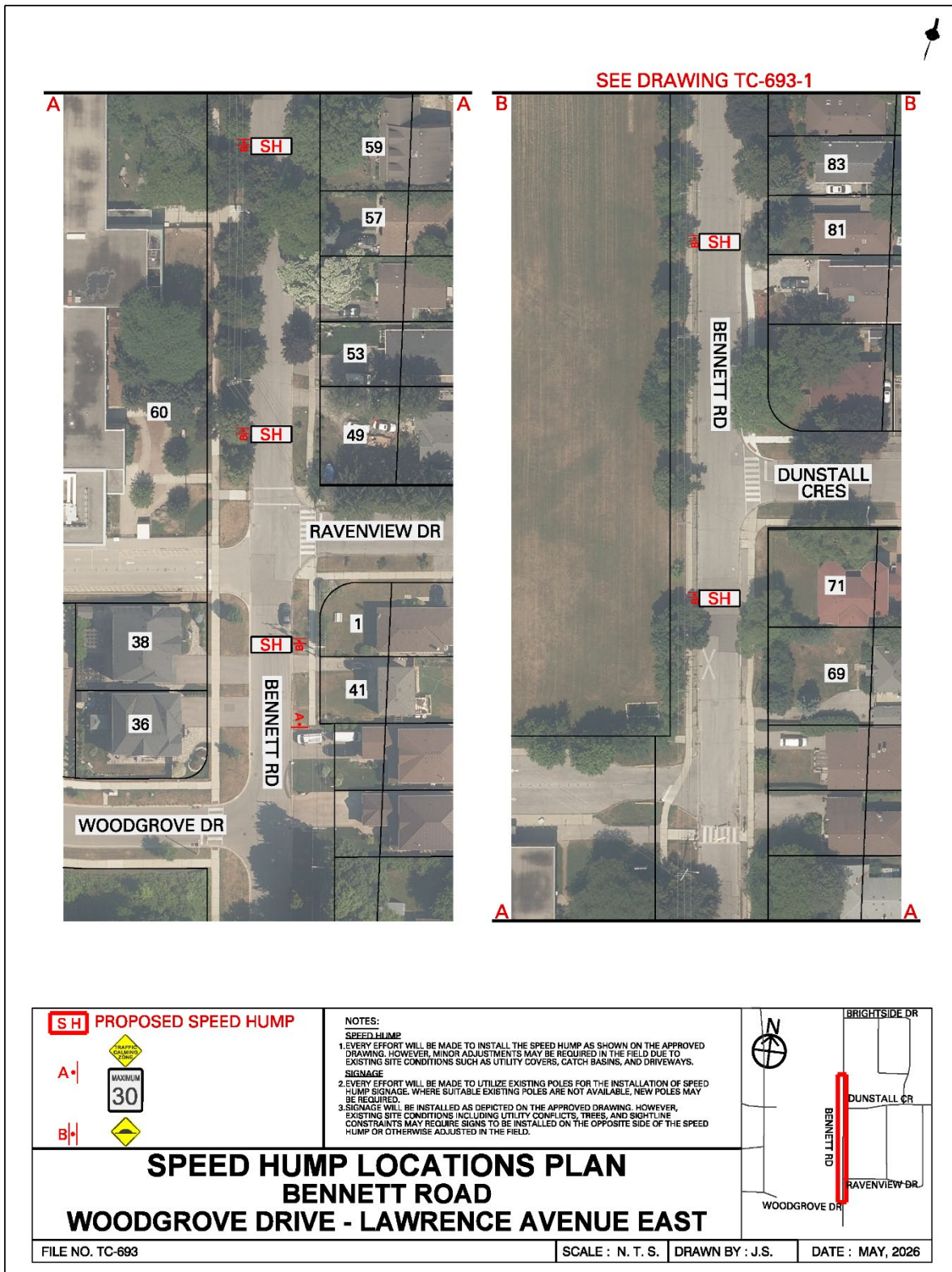
Attachment 1: Traffic Calming Warrant – Bennett Road, between Lawrence Avenue East and the south end of Bennett Road

Criteria		Requirement	Warrant Satisfied?
Community Support		A direct request from the Ward Councillor OR identified by Transportation Services in consultation with the Ward Councillor	Yes
Eligibility Criteria	Road Classification	Classified as a local or collector roadway, according to the Toronto Road Classification System	Yes
	Sidewalks	Presence of a sidewalk on at least one side of a local roadway and both sides of a collector roadway is preferred but not required	Yes
	Traffic Volume	Maximum average daily traffic volume of less than 8,000 vehicles per day	Yes
	Road Grade	Maximum roadway grade of up to 5%, can be considered in locations where the road grade is between 5% and 8% with additional review	Yes
	Emergency Services	No significant impacts on emergency services, including Toronto Fire, Paramedic and Police Services	Yes
	Transit Services	No significant impacts to regularly scheduled Toronto Transit Commission (TTC) services	N/A
Warrant Criteria	Minimum Block Length	Minimum block length of 120 metres based on the measured distance from centre to centre of controlled intersections AND	Yes (624 m)
	85th percentile speed	Minimum 85th percentile speed of 8 km/h over the warranted speed limit OR	Yes (17 km/h)
	95th percentile speed	Minimum 95th percentile speed of 15 km/h over the warranted speed limit	Yes (21 km/h)

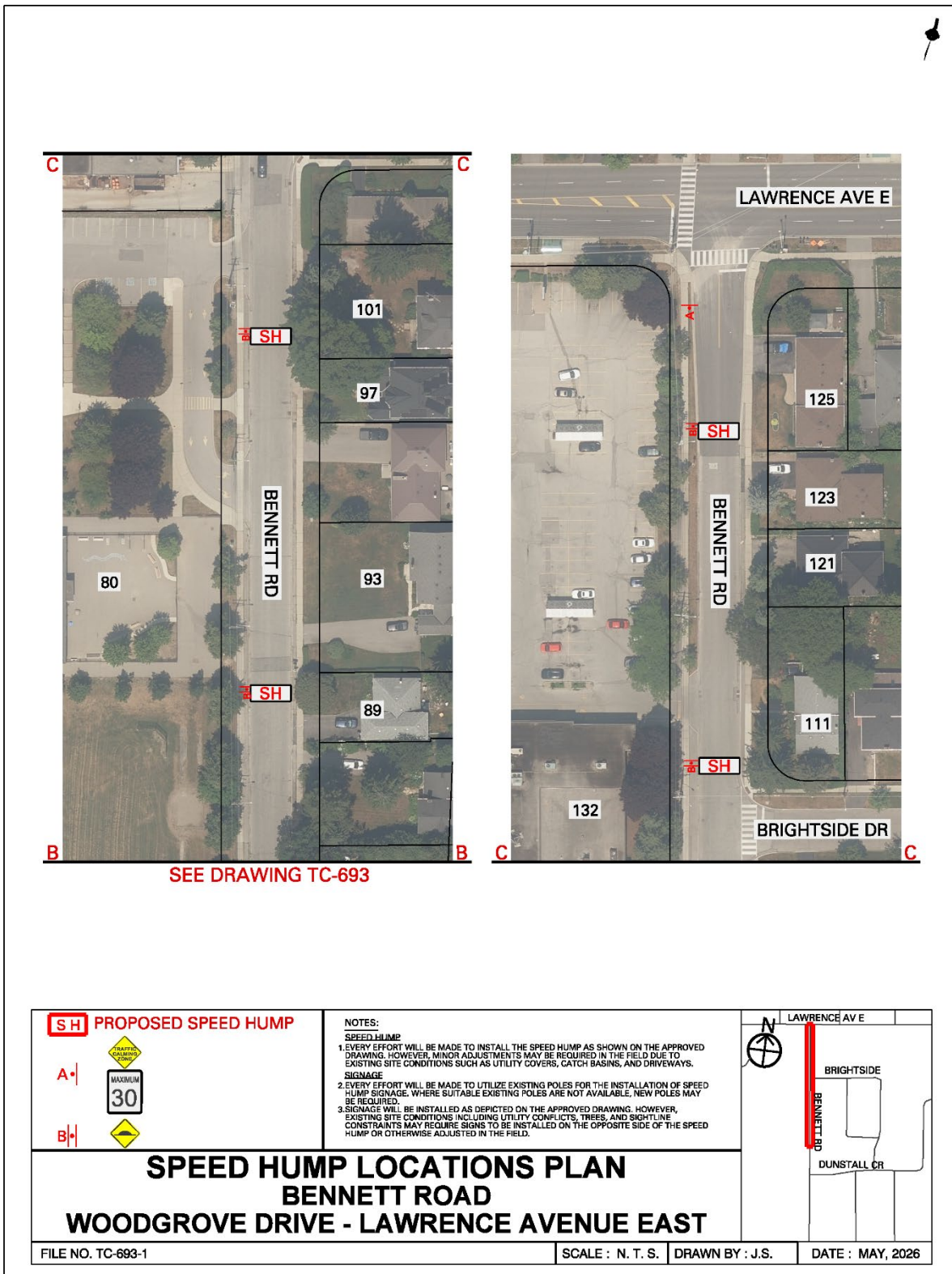
Attachment 2: Traffic Calming Warrant – Dunstall Crescent, between Bennett Road and Beechgrove Drive

Criteria		Requirement	Warrant Satisfied?
Community Support		A direct request from the Ward Councillor OR identified by Transportation Services in consultation with the Ward Councillor	Yes
Eligibility Criteria	Road Classification	Classified as a local or collector roadway, according to the Toronto Road Classification System	Yes
	Sidewalks	Presence of a sidewalk on at least one side of a local roadway and both sides of a collector roadway is preferred but not required	Yes
	Traffic Volume	Maximum average daily traffic volume of less than 8,000 vehicles per day	Yes
	Road Grade	Maximum roadway grade of up to 5%, can be considered in locations where the road grade is between 5% and 8% with additional review	Yes
	Emergency Services	No significant impacts on emergency services, including Toronto Fire, Paramedic and Police Services	Yes
	Transit Services	No significant impacts to regularly scheduled Toronto Transit Commission (TTC) services	N/A
Warrant Criteria	Minimum Block Length	Minimum block length of 120 metres based on the measured distance from centre to centre of controlled intersections AND	Yes (574 m)
	85th percentile speed	Minimum 85th percentile speed of 8 km/h over the warranted speed limit OR	Yes (8 km/h)
	95th percentile speed	Minimum 95th percentile speed of 15 km/h over the warranted speed limit	No (13 km/h)

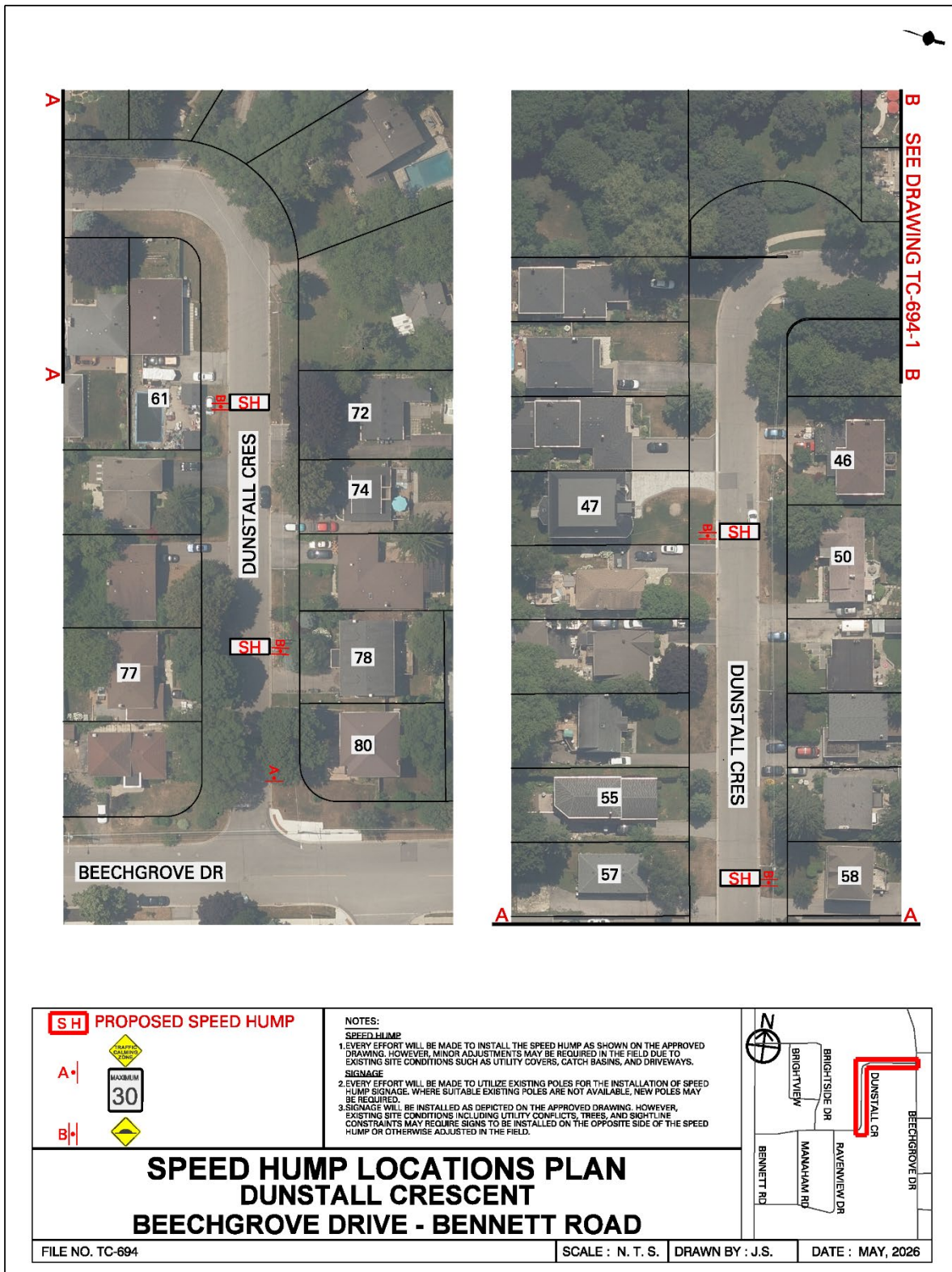
Attachment 3: Speed Hump Locations Plan – Bennett Road, Woodgrove Drive - Lawrence Avenue East (Matchline, see drawing TC-693-1)



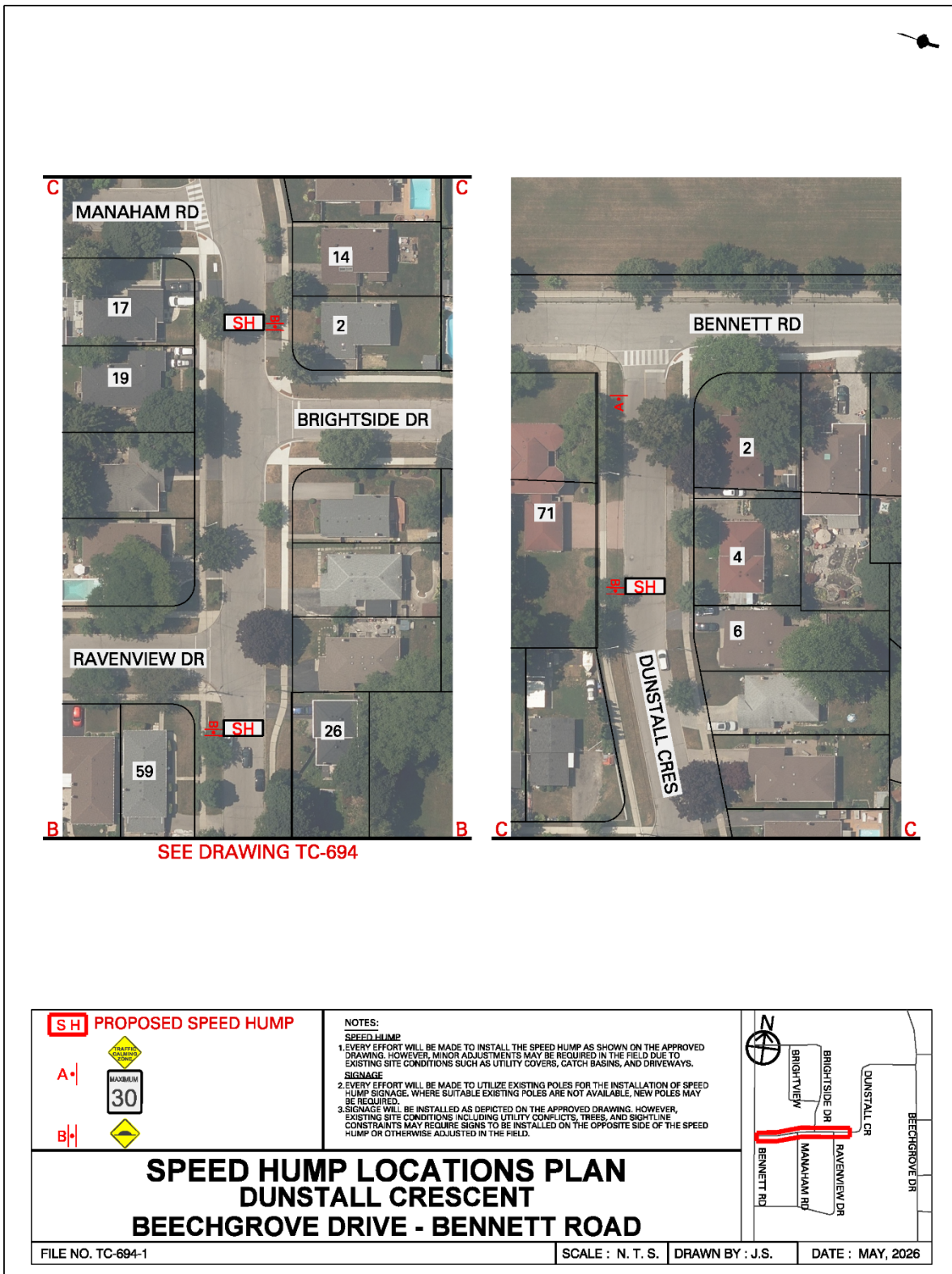
Attachment 4: Speed Hump Locations Plan – Bennett Road, Woodgrove Drive - Lawrence Avenue East



Attachment 5: Speed Hump Locations Plan – Dunstall Crescent, Beechgrove Drive – Bennett Road (Matchline, see drawing TC-694-1)



Attachment 6: Speed Hump Locations Plan – Dunstall Crescent, Beechgrove Drive – Bennett Road



## Attachment 7: Letter from Toronto Paramedic Services, dated April 24, 2026

**From:** EMS Planning <[emsplanning@toronto.ca](mailto:emsplanning@toronto.ca)>  
**Sent:** April 24, 2026 5:44 PM  
**To:** Rizwan Heer <[Rizwan.Heer@toronto.ca](mailto:Rizwan.Heer@toronto.ca)>  
**Cc:** EMS Planning <[emsplanning@toronto.ca](mailto:emsplanning@toronto.ca)>  
**Subject:** RE: Speed Humps - Bennett Road and Dunstall Crescent

Hi Rizwan,

We have received and reviewed the proposal for installation of speed humps on Bennett Road between Lawrence Avenue and Woodgrove Drive and Dunstall Crescent between Bennett Road and Beechgrove Drive, with the following comments:

The installation of speed humps on Bennett Road between Lawrence Avenue and Woodgrove Drive and Dunstall Crescent between Bennett Road and Beechgrove Drive, will impact response and transport times for residents that reside on the roadway speed humps are installed. Impacts may extend to community members if Bennett Road between Lawrence Avenue and Woodgrove Drive and Dunstall Crescent between Bennett Road and Beechgrove Drive, serves access to other roadways. It is important that the applicant understands that the installation of traffic calming devices will reduce the speed that emergency vehicles travel when responding to emergencies on roadways where they are installed.

Toronto Paramedic Services is supportive of community initiatives that improve the safety of all citizens of, and visitors to, the City of Toronto. Traffic and pedestrian safety are key components of a healthy neighbourhood, and we endeavour to support the wishes of the community to implement measures to improve upon these components.

