

Parking Amendments - Westview Boulevard

Date: March 16, 2026

To: Toronto and East York Community Council

From: Deputy General Manager, Transportation Services

Wards: Ward 19 - Beaches-East York

SUMMARY

This report is about parking regulations for which the Community Council has delegated authority from City Council to make a final decision.

Transportation Services is recommending parking prohibitions on Westview Boulevard at the following intersections:

- Westview Boulevard at Amsterdam Avenue
- Westview Boulevard at Galbraith Avenue
- Westview Boulevard at Tiago Avenue
- Westview Boulevard at Selwyn Avenue
- Westview Boulevard at Gardens Crescent
- Westview Boulevard at Joanith Drive

Transportation Services is recommending the proposed parking prohibitions to support the implementation of geometric safety improvements and maintain vehicle maneuverability at these intersections, which were identified for delivery through the City's Transportation Safety and Local Improvements Program and the City's state-of-good-repair program.

RECOMMENDATIONS

The Deputy General Manager, Transportation Services recommends that:

1. Toronto and East York Community Council prohibit parking at all times on the south side of Amsterdam Avenue, between Westview Boulevard and a point 22 metres east.
2. Toronto and East York Community Council prohibit parking at all times on the north side of Amsterdam Avenue, between Westview Boulevard and a point 24 metres east.

3. Toronto and East York Community Council prohibit parking at all times on the west side of Westview Boulevard, between Amsterdam Avenue and a point 20.5 metres north.
4. Toronto and East York Community Council prohibit parking at all times on the south side of Galbraith Avenue, between Westview Boulevard and a point 35 metres east.
5. Toronto and East York Community Council prohibit parking at all times on the north side of Galbraith Avenue, between Westview Boulevard and a point 27 metres east.
6. Toronto and East York Community Council prohibit parking at all times on the west side of Westview Boulevard, between Galbraith Avenue and a point 18 metres south.
7. Toronto and East York Community Council rescind the existing parking prohibition in effect at all times on the south side of Tiago Avenue, between Westview Boulevard and a point 61 metres east of Westview Boulevard.
8. Toronto and East York Community prohibit parking at all times on the south side of Tiago Avenue, between Westview Boulevard and a point 51 metres east.
9. Toronto and East York Community Council prohibit parking at all times on the west side of Westview Boulevard, between Tiago Avenue and a point 19 metres south.
10. Toronto and East York Community Council prohibit parking at all times on the east side of Westview Boulevard, between Tiago Avenue and a point 30 metres north.
11. Toronto and East York Community prohibit parking at all times on the east side of Selwyn Avenue, between Westview Boulevard and a point 26.5 metres south.
12. Toronto and East York Community prohibit parking at all times on the east side of Westview Boulevard, between Selwyn Avenue and a point 22 metres south.
13. Toronto and East York Community prohibit parking at all times on the south side of Gardens Crescent, between Westview Boulevard and a point 26.5 metres east.
14. Toronto and East York Community prohibit parking at all times on the north side of Gardens Crescent, between Westview Boulevard and a point 19 metres east.
15. Toronto and East York Community prohibit parking at all times on the east side of Westview Boulevard, between Gardens Crescent (south intersection) and a point 19 metres south.
16. Toronto and East York Community prohibit parking at all times on the west side of Westview Boulevard, between Gardens Crescent and a point 21 metres north.
17. Toronto and East York Community prohibit parking at all times on the west side of Westview Boulevard, between Gardens Crescent (south intersection) and a point 19 metres south.

18. Toronto and East York Community prohibit parking at all times on the south side of Joanith Drive, between Westview Boulevard and a point 18.5 metres east.

19. Toronto and East York Community prohibit parking at all times on the north side of Joanith Drive, between Westview Boulevard and a point 20 metres east.

FINANCIAL IMPACT

The cost for signage associated with the proposed parking amendments are approximately \$5000. Funding is available within the approved 2026 Operating Budget for Transportation Services.

DECISION HISTORY

This report addresses a new initiative.

COMMENTS

Background

In 2015-2016, the former Ward Councillor requested Transportation Services staff to investigate the intersections of Westview Boulevard and Galbraith Avenue, Westview Boulevard and Tiago Avenue, and Westview Boulevard and Selwyn Avenue for safety improvements.

Transportation Services Staff investigated these three intersections and identified the following operational concerns:

- The existing intersection angles and curb radii permitted motorists to turn at a greater speed than appropriate for a residential neighbourhood; and
- Due to large curb radii, pedestrians (including school children) experience long east-west crossing distances (15 to 20 metres).

To address the concerns above, intersection realignments were programmed as Transportation Safety and Local Improvements Program projects to be delivered with the Topham Park Basement Flooding Protection Program project. The intersection realignment and underground sewer works on Westview Boulevard are now programmed for 2025-2027 as part of Contract 3 of the Topham Park Basement Flooding Protection Program project.

In 2020, the proposed intersection realignments at the intersections of Westview Boulevard and Galbraith Avenue, Westview Boulevard and Tiago Avenue, and Westview Boulevard and Selwyn Avenue were implemented using quick-build materials (paint, bollards, and signs).

In January 2025, Transportation Services staff investigated the intersections of Westview Boulevard and Gardens Crescent, and Westview Boulevard and Joanith Drive and identified similar operational concerns as at the three intersections identified in 2016. Intersection realignments were programmed as Transportation Safety and Local Improvements Program projects to be delivered with the 2025-2027 Contract 3 works as part of the Topham Park Basement Flooding Protection Program project.

In December 2025, through the design development of roadway resurfacing work on Westview Boulevard between Holland Avenue and Amsterdam Avenue programmed for 2026-2027, Transportation Services staff investigated the intersection of Westview Boulevard and Amsterdam Avenue and identified similar operational concerns.

Consultation

Public consultation on the intersection improvements being implemented along Westview Boulevard took place in 2025, including an in-person public information meeting on May 29, 2025 and a site walk with residents and the Ward Councillor on September 10, 2025.

Feedback was received from residents and the Ward Councillor on the proposed intersection improvements. The three primary concerns raised in response to the proposed intersection improvements included:

- Concerns that the existing quick-build (paint, bollards, and signs) intersection realignments of Westview Boulevard and Galbraith Avenue, Westview Boulevard and Tiago Avenue, and Westview Boulevard and Selwyn Avenue, resulted in difficult vehicle maneuverability and knocked-down bollards.
- Concerns with the increased boulevard maintenance responsibilities for residents.
- Concerns with the existing lack of parking signage and lack of clarity as to where vehicles can park, in proximity to the realigned intersections along Westview Boulevard.

Following the consultation period, staff considered community feedback and adjusted the intersection realignment designs to respond to specific community safety and access concerns.

Planned Intersection Improvements and Associated Parking Amendments Proposed

To address the concerns across the six identified intersections along Westview Boulevard, intersection realignments are being implemented to 'normalize' these six intersections. The scope at these intersections included tightening intersection curb radii, reducing crossing distances, widening sidewalks, improving accessibility at the crossings and adding greenspace. These changes will increase safety by reducing vehicle turning speeds, reducing crossing distances for people walking and significantly improving sightlines between all road users. The changes are anticipated reduce the chance of collisions between users, and if a collision should occur, the severity would be greatly reduced.

In order to support the layouts of the intersection realignments, parking by-law amendments are required to ensure the intersections remain unobstructed and vehicle maneuverability is maintained.

Parking prohibitions are proposed on Westview Boulevard at the immediate approaches to/from the following intersections:

- Westview Boulevard at Amsterdam Avenue
- Westview Boulevard at Galbraith Avenue
- Westview Boulevard at Tiago Avenue
- Westview Boulevard at Selwyn Avenue
- Westview Boulevard at Gardens Crescent
- Westview Boulevard at Joanith Drive

There are no permit parking spaces impacted by the proposed parking prohibitions on Westview Boulevard. The proposed parking prohibitions will reduce the capacity of on-street non-permit parking in the vicinity of the above intersections. However, the overall parking capacity along Westview Boulevard is not constrained due to the availability of on-street non-permit parking on connecting side streets and longer, multi-vehicle residential driveways throughout the neighbourhood.

Maps of the area and proposed parking amendments are included in Attachments 1-6.

The Ward Councillor has been advised of the recommendations of this staff report.

CONTACT

Randy McLean
Manager, Vision Zero and Neighbourhood Projects
Planning, Design & Management
Transportation Services
Tel: (416) 392-4628
Email: Randy.McLean@toronto.ca

Jacquelyn Hayward
Director, Strategic Capital Coordination Office
Infrastructure Services
Tel: (416) 392-5348
Email: Jacquelyn.Hayward@toronto.ca

SIGNATURE

Gregg Loane
Deputy General Manager (A)
Transportation Services

ATTACHMENTS

Attachment 1: Map - Parking Amendments - Westview Boulevard and Amsterdam Avenue

Attachment 2: Map - Parking Amendments - Westview Boulevard and Galbraith Avenue

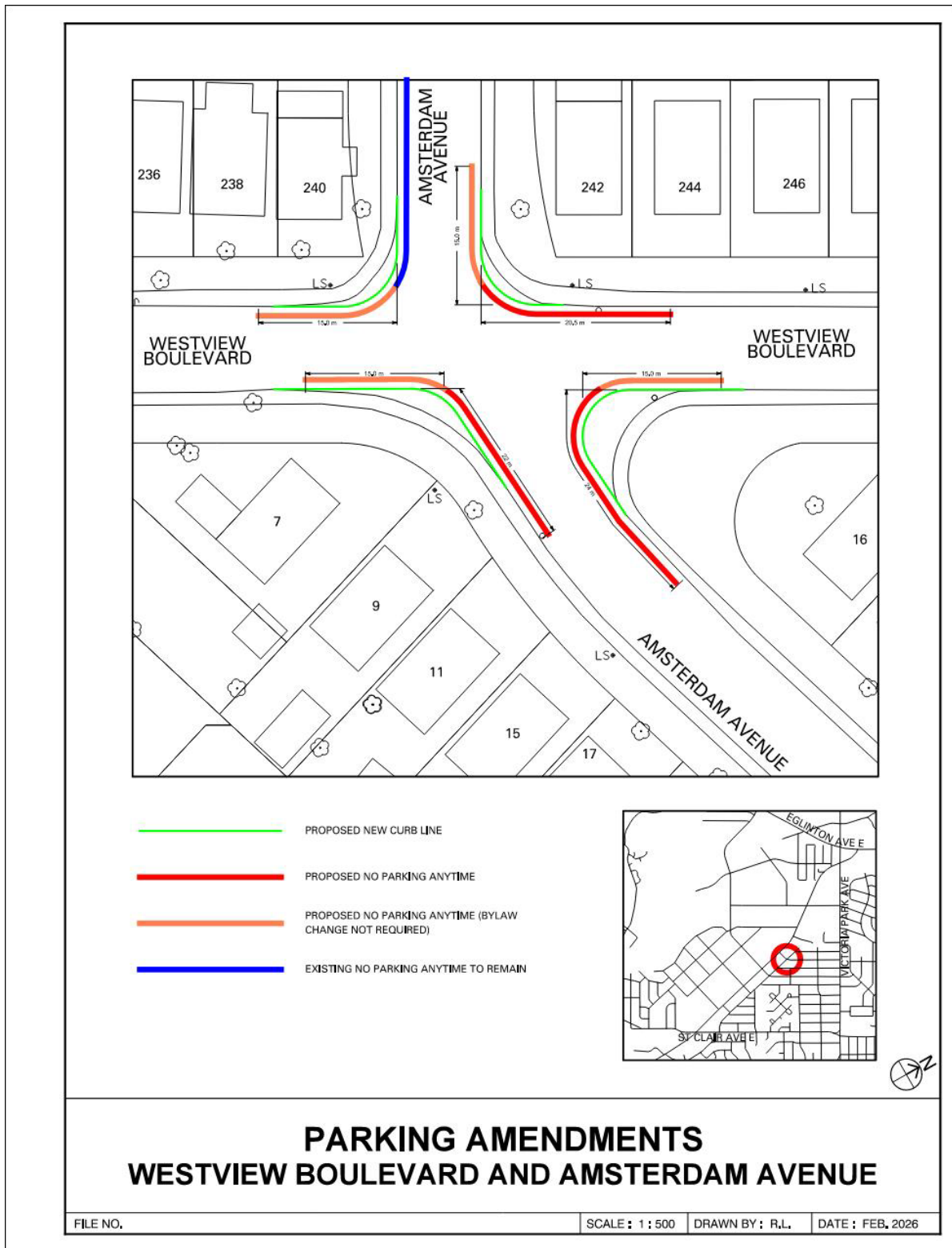
Attachment 3: Map - Parking Amendments - Westview Boulevard and Tiago Avenue

Attachment 4: Map - Parking Amendments - Westview Boulevard and Selwyn Avenue

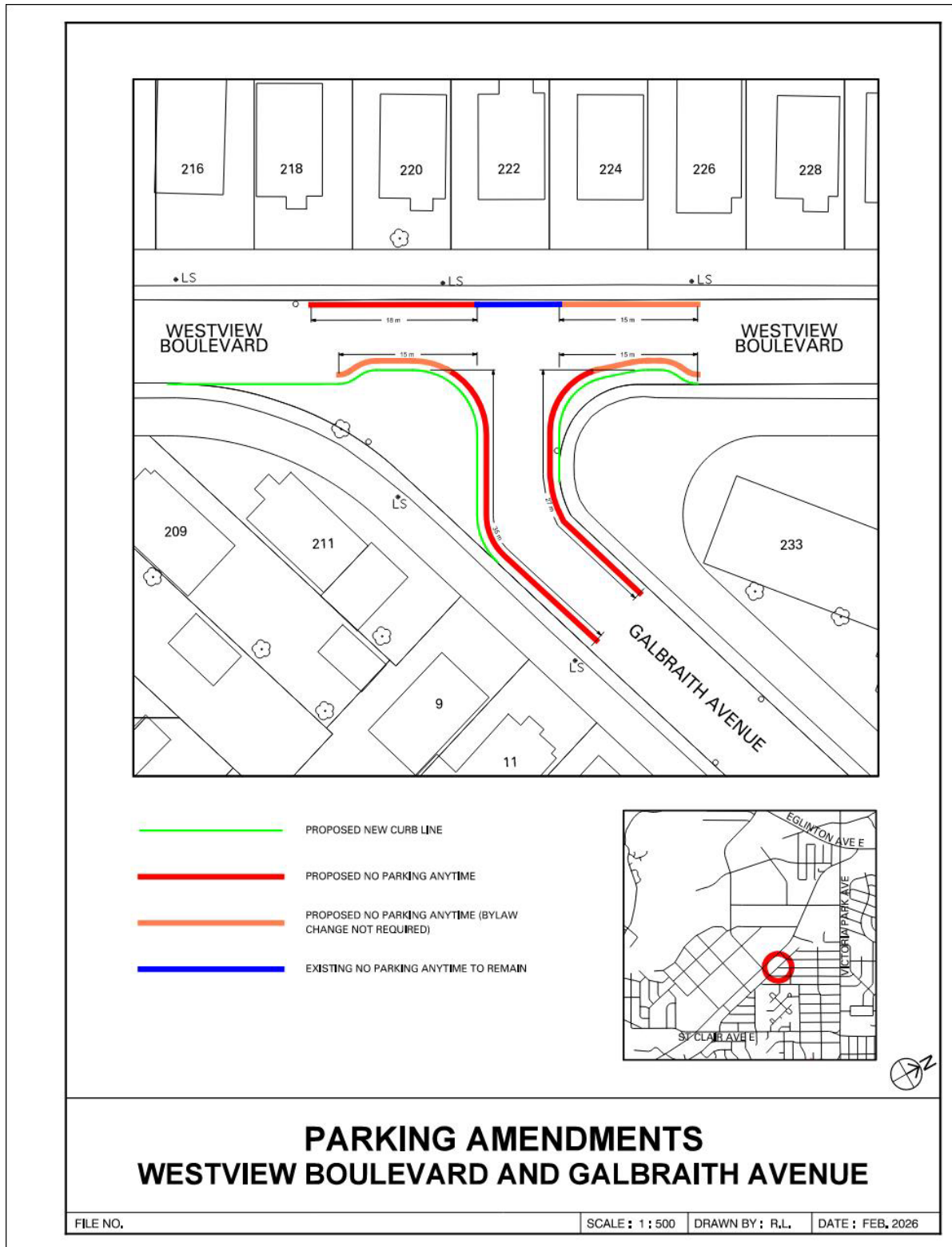
Attachment 5: Map - Parking Amendments - Westview Boulevard and Gardens Crescent

Attachment 6: Map - Parking Amendments - Westview Boulevard and Joanith Drive

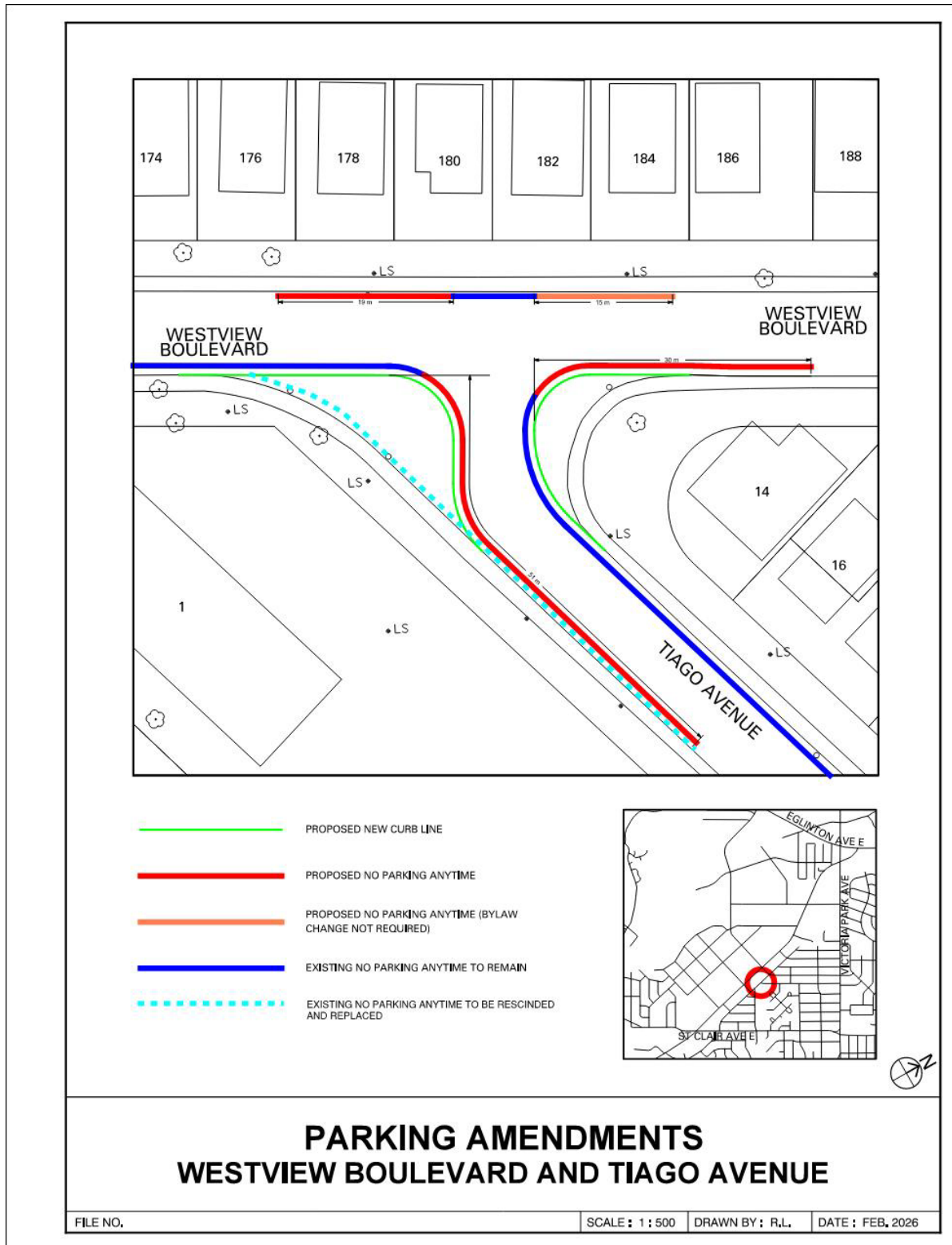
Attachment 1: Map - Parking Amendments - Westview Boulevard and Amsterdam Avenue



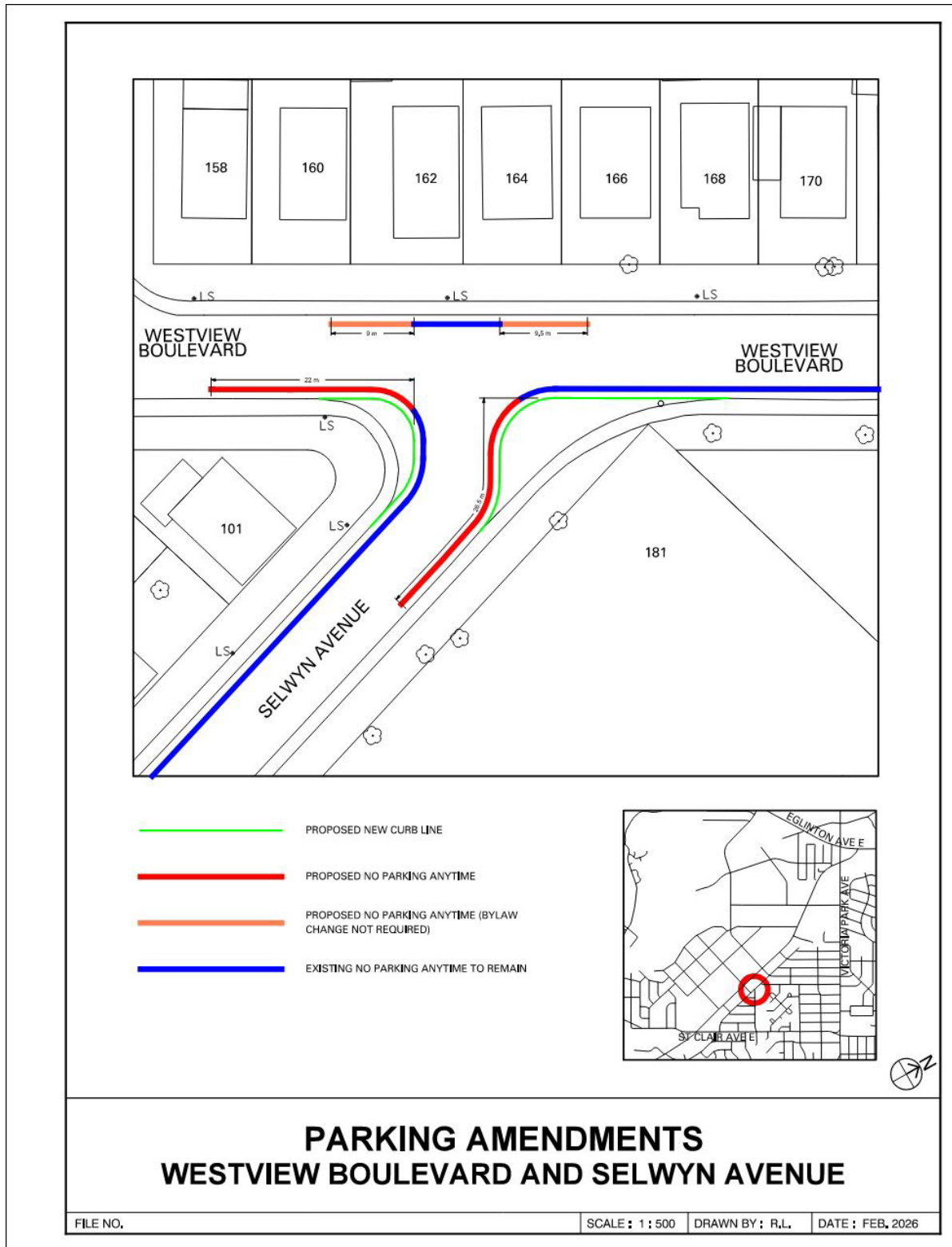
Attachment 2: Map - Parking Amendments - Westview Boulevard and Galbraith Avenue



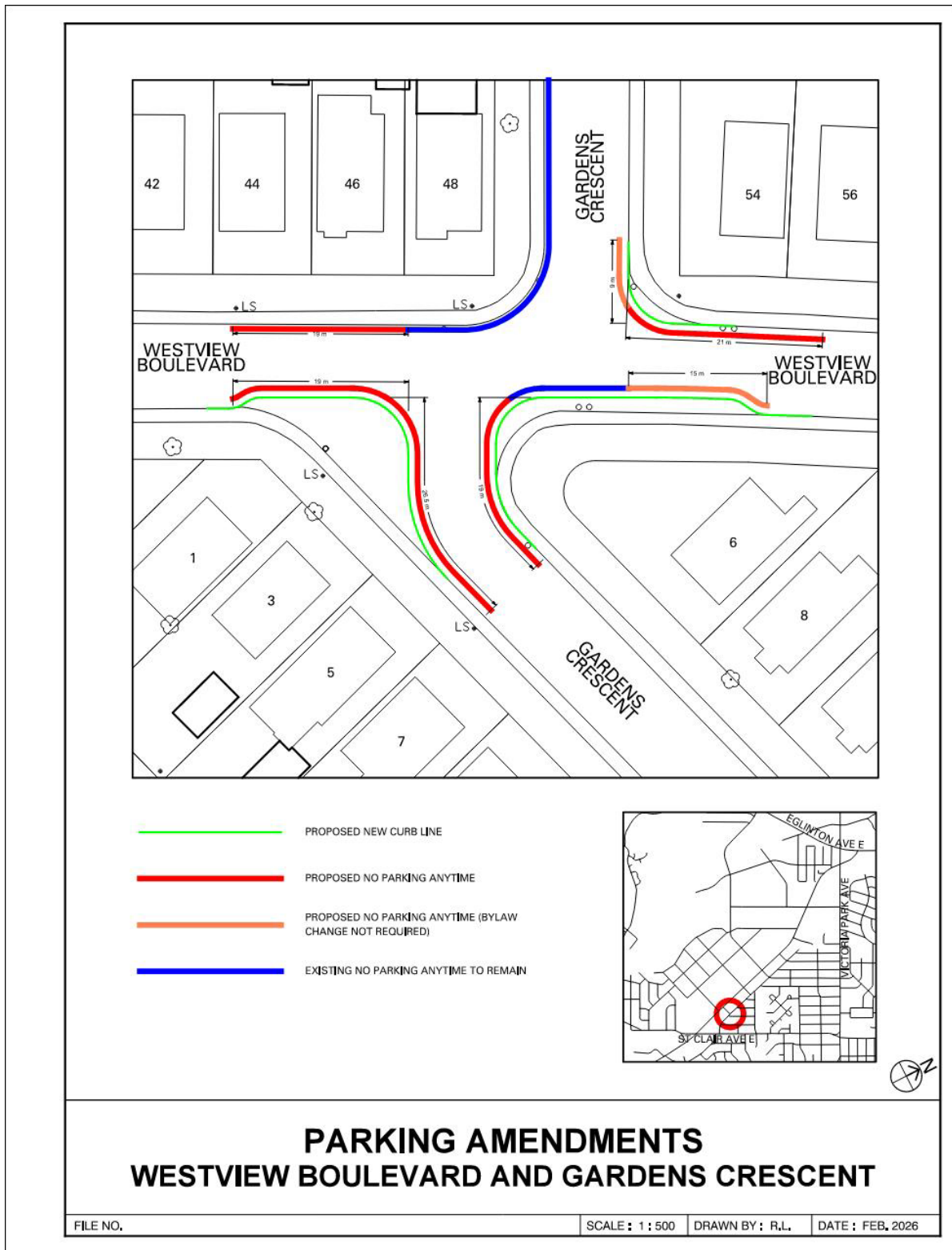
Attachment 3: Map - Parking Amendments - Westview Boulevard and Tiago Avenue



Attachment 4: Map - Parking Amendments - Westview Boulevard and Selwyn Avenue



Attachment 5: Map - Parking Amendments - Westview Boulevard and Gardens Crescent



Attachment 6: Map - Parking Amendments - Westview Boulevard and Joanith Drive

