

An aerial photograph of a city skyline, likely New York City, viewed from a high angle. The image is overlaid with a semi-transparent blue filter. The text '04' is positioned in the upper left area of the image.

04

History of the Railway Lands

An aerial photograph of a city skyline, likely Chicago, featuring numerous skyscrapers and a large airport (Midway International Airport) situated on a peninsula. The city is surrounded by water, and a large green park area is visible in the foreground. The word "TODAY" is overlaid in large white letters in the top right corner.

TODAY



**But this is
relatively
recent.**

1999

HISTORICAL EVOLUTION

How did we get here?

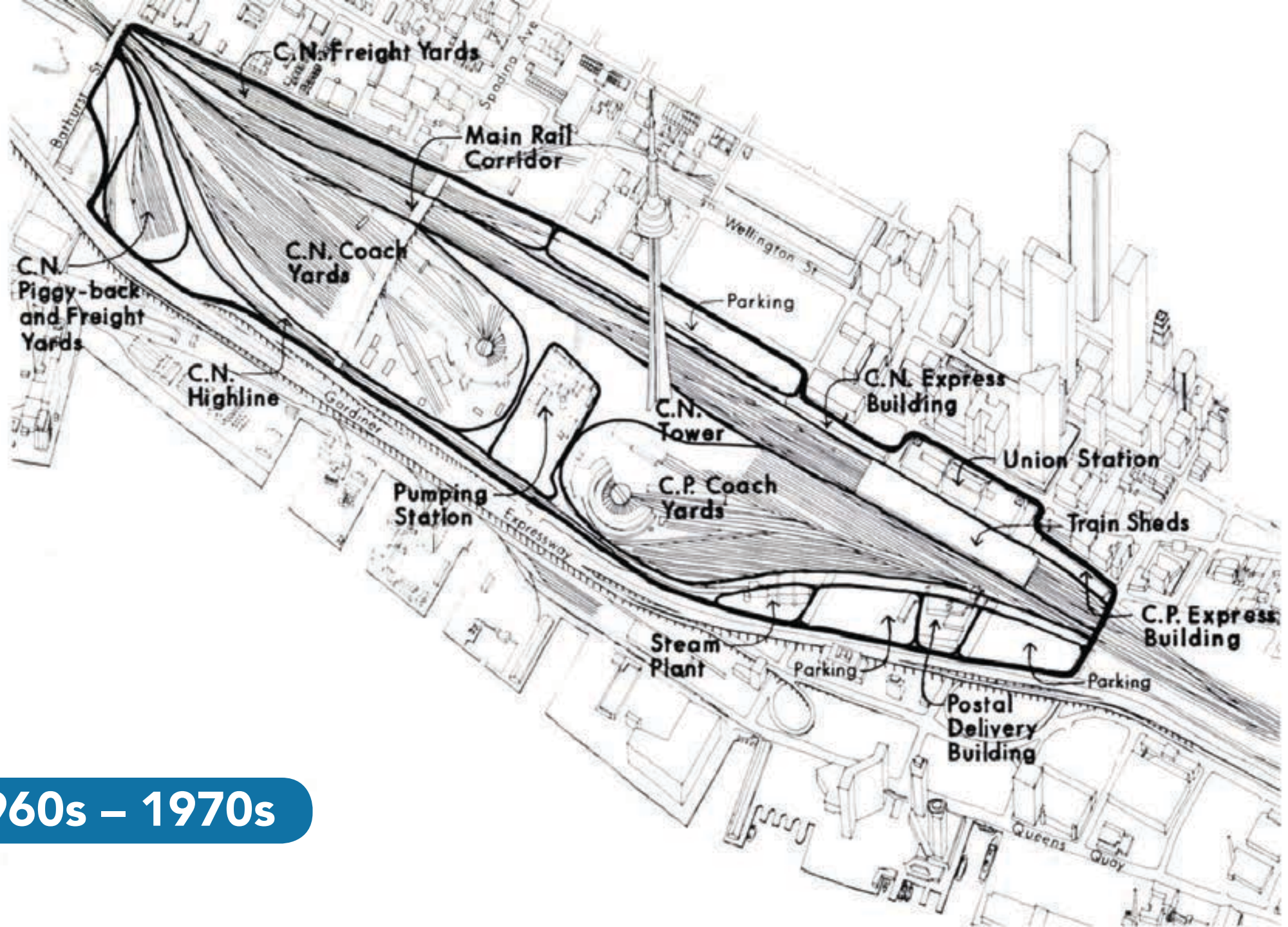
ISOLATED & ISOLATING

An aerial photograph of the Chicago Railway Lands in the 1940s. The image shows a vast area of land, mostly covered in dirt and gravel, with numerous tracks and roads crisscrossing it. In the background, the city of Chicago is visible, including the Willis Tower (then known as the Sears Tower) and the Lake Michigan shoreline. The foreground shows some industrial buildings and a large stadium, likely the Comiskey Park. The overall scene depicts a large-scale urban development project.

The Railway Lands in the 1940s



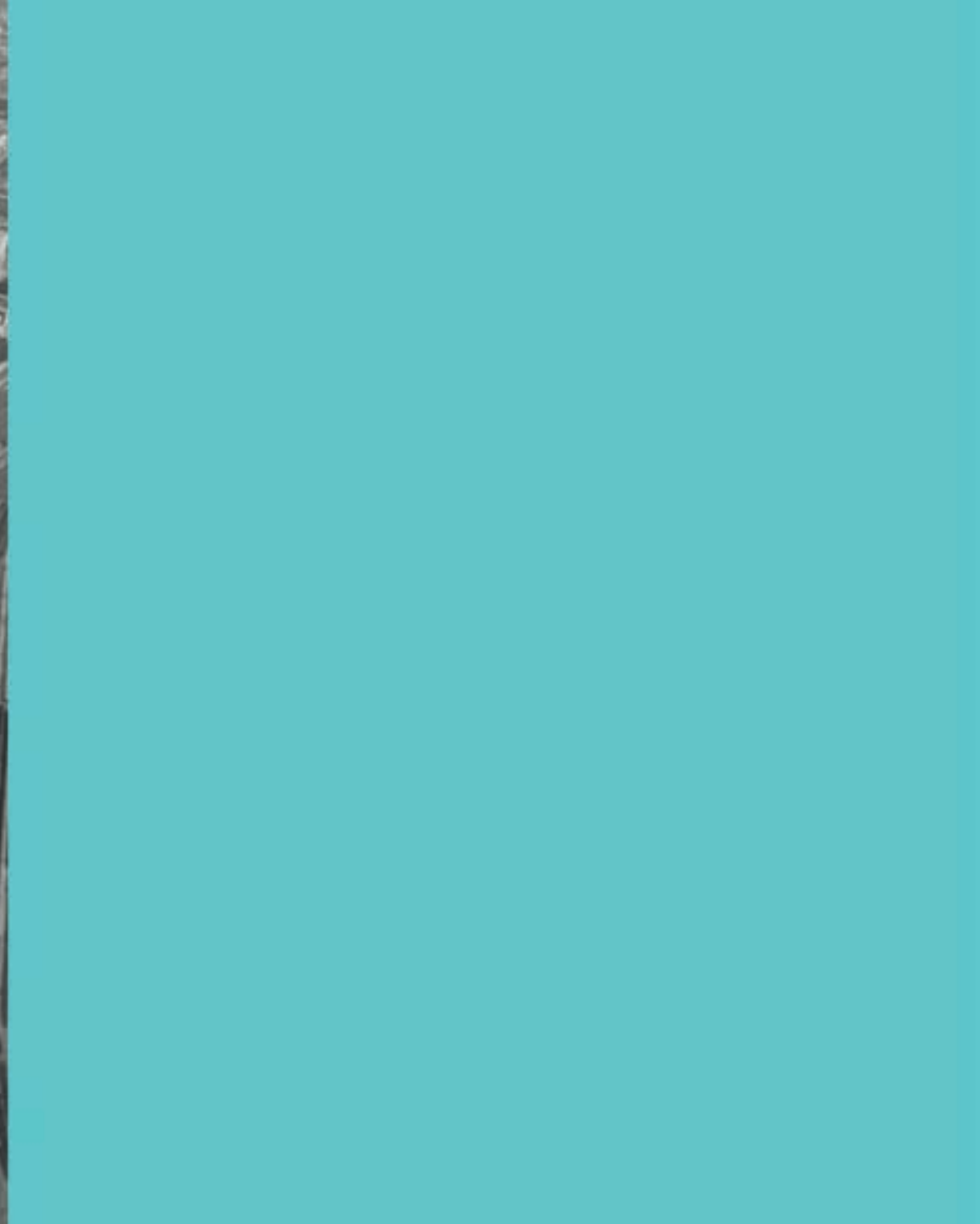
1960s – 1970s



1960s – 1970s



1970s



1980-1990s





2000s



2000s

The Rise of New 21st Century Neighbourhoods



2010s

How did the Railway
Lands add 20,000 people
in 20 years?

The Railway Lands Secondary Plans (1992,1994)

The Railway Lands Secondary Plans (1992,1994)



670,120 m²
(6,700 units)

1,217,620 m²

Connections over rail corridor

HOW HAVE THE RAILWAY LANDS TRANSFORMED?

The Railway Lands Secondary Plans (1992,1994)



Residential

1,217,620 m²
(16,970 units)



Non-Residential

1,369,490 m²

6

Connections over
rail corridor

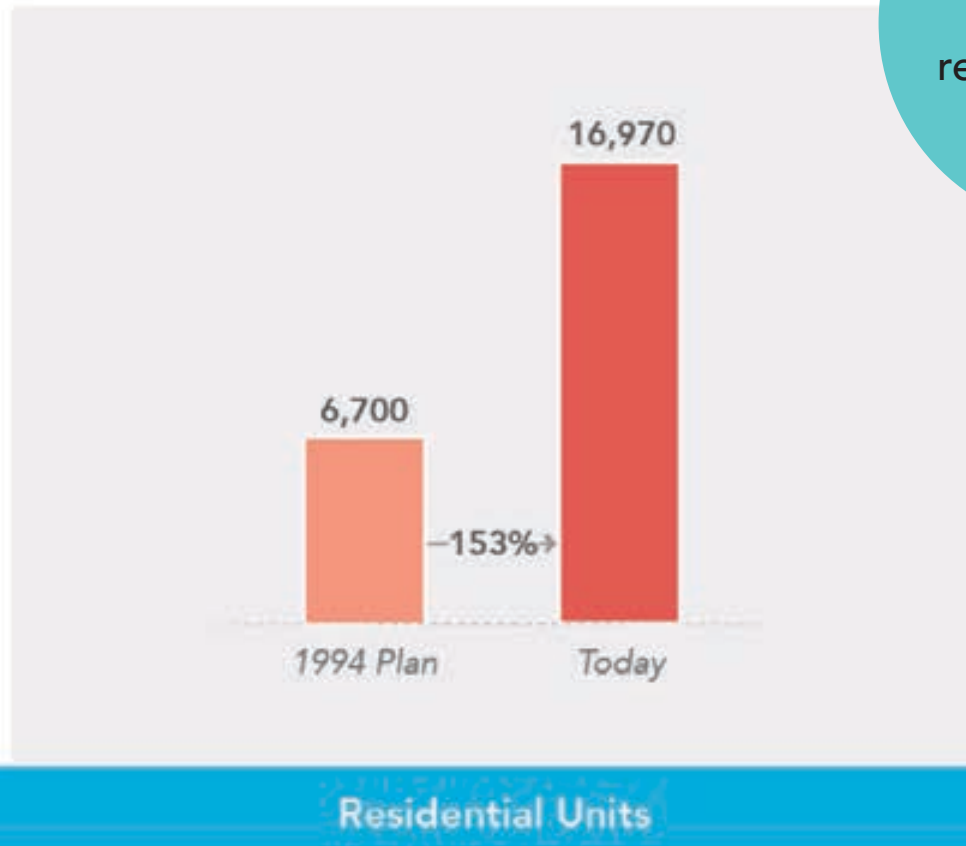
RAILWAY LANDS: RESIDENTIAL & NON-RESIDENTIAL USES

From Planning to Today



RAILWAY LANDS: RESIDENTIAL & NON-RESIDENTIAL USES

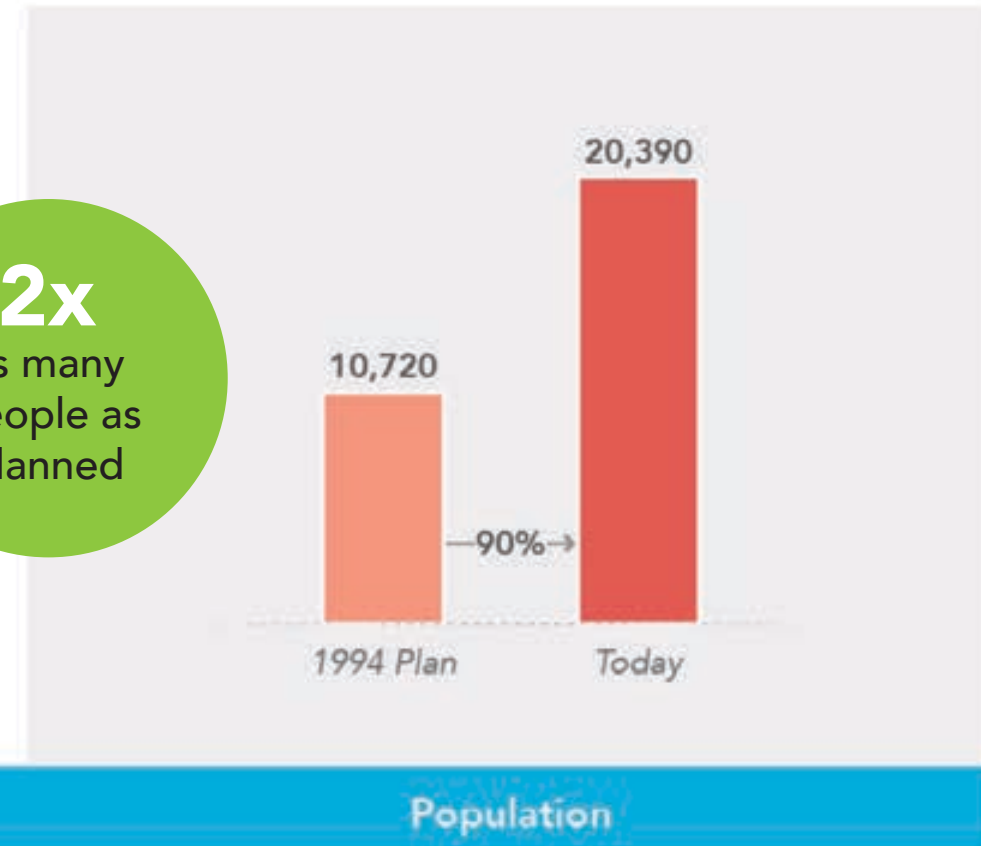
From Planning to Today



+153%

increase in
residential units
as planned

2x
as many
people as
planned



—90%→

RAILWAY LANDS: RESIDENTIAL UNITS & POPULATION

From Planning to Today

Planned Population:

10,270

Actual Population 2016:

20,390



RAILWAY LANDS: PARKLAND

From Plan to Today – How much parkland is there per person in the Railway Lands? (hectare /1000 people)

1994 Railway Lands Plans:

1.05



2016:

0.55



Parks have
not kept
pace with
growth

RAILWAY LANDS: PARKLAND

From Plan to Today – How much parkland would it take to provide the same proportion of parkland for today's population?

+10

hectares of new parkland
is required to serve
current population



3x size
Of Canoe
Landing Park

And more
growth is coming...

2010



Today

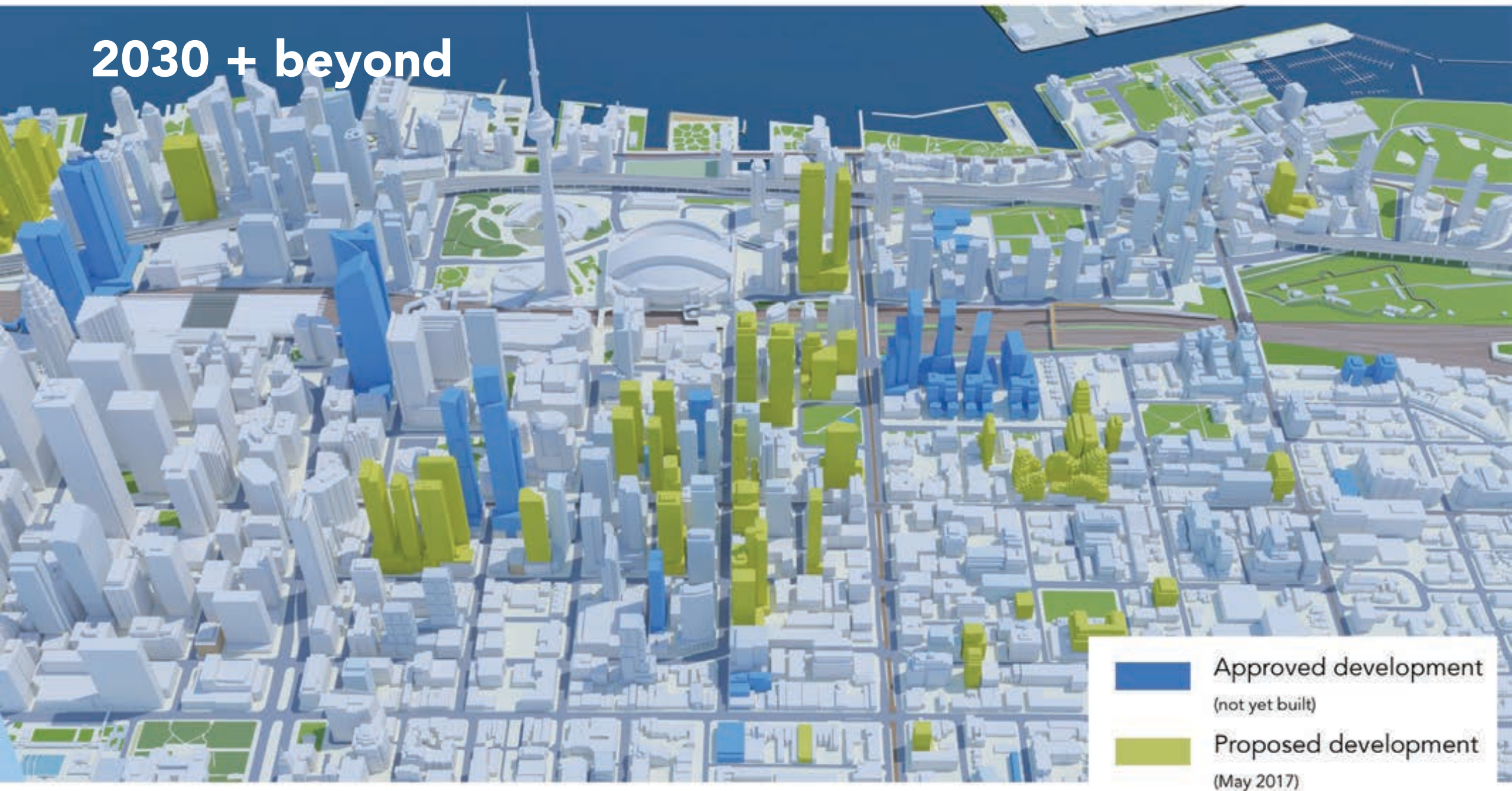


Approved



Approved development
(not yet built) as of May 2017

2030 + beyond



-  Approved development
(not yet built)
-  Proposed development
(May 2017)

An aerial photograph of a city skyline, likely New York City, viewed from a high angle. The image is heavily filtered with a blue color and has a semi-transparent dark blue overlay. The text "05 The Need for a Downtown Park" is superimposed on the left side of the image. The city features numerous skyscrapers and a dense urban layout, with a body of water visible in the upper left corner.

05

The Need for a Downtown Park



Trinity Bellwoods Saturday afternoon



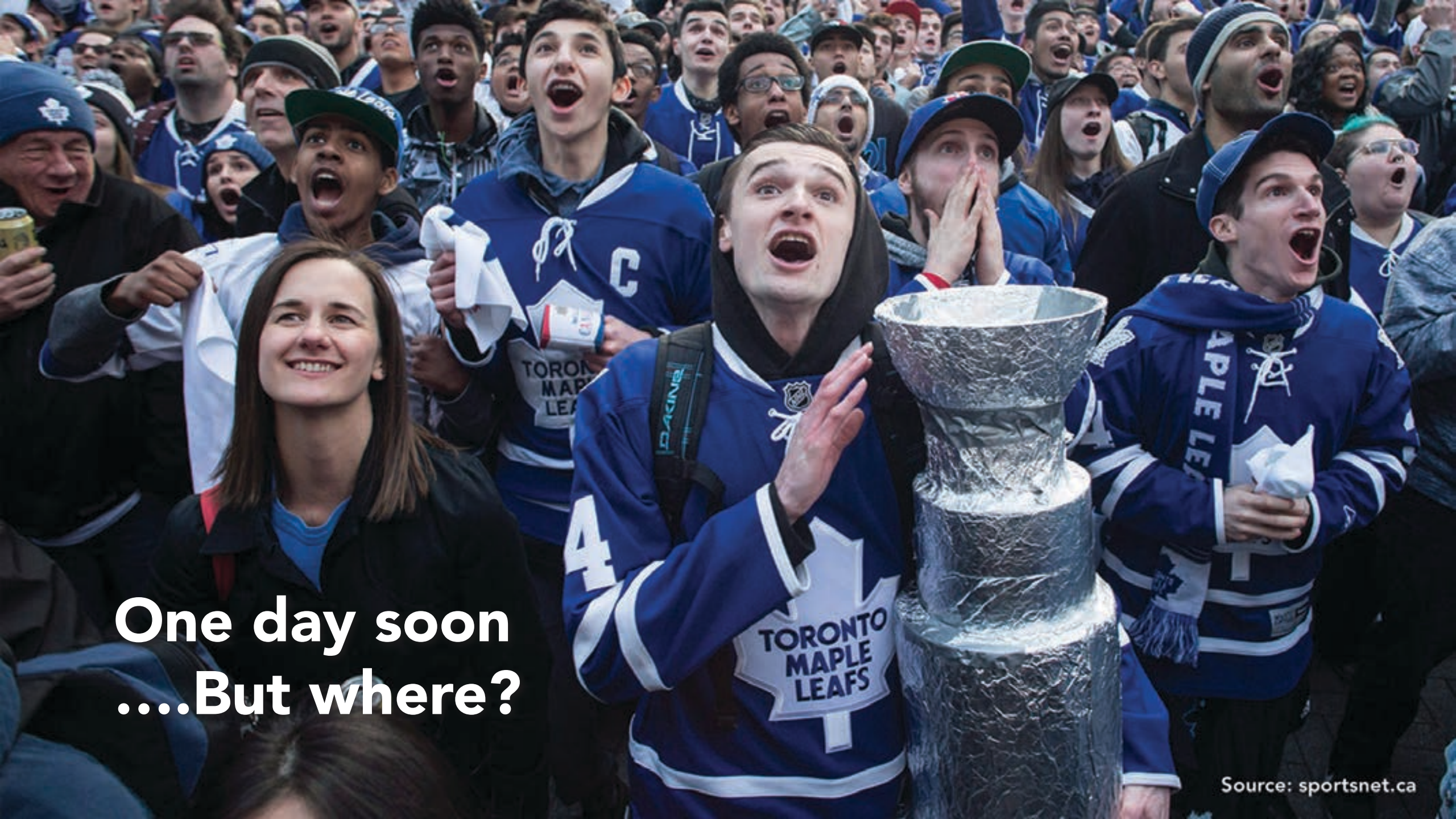
Canoe Landing Park Easter weekend



David Pecaut Square September



Nathan Philips Square January

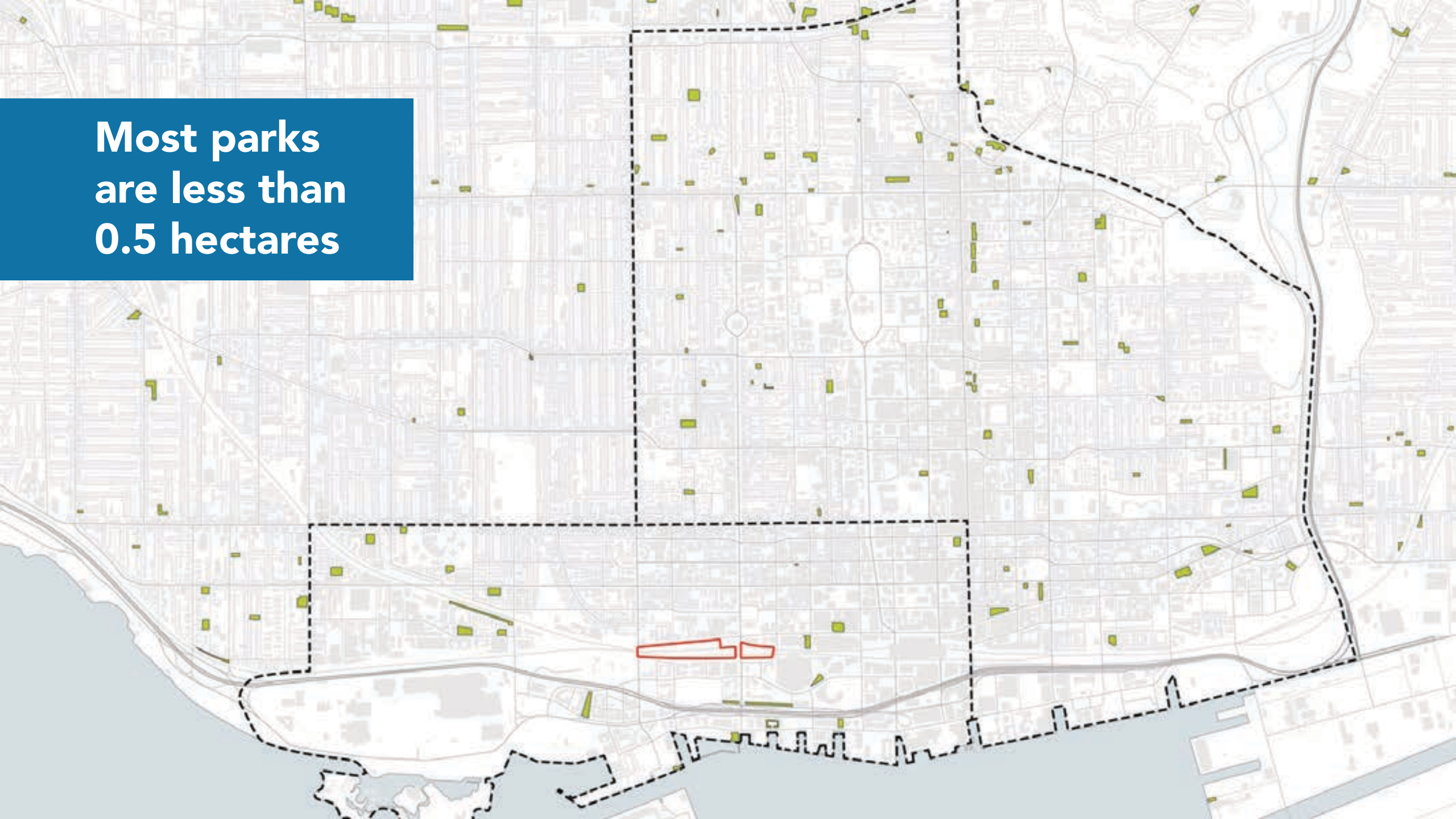


**One day soon
....But where?**

PARKS IN THE DOWNTOWN AREA



**Most parks
are less than
0.5 hectares**



Limited large parks



- District Parks (5 to 15 hectares)
- Community Parks (3 to 5 hectares)