

**DELEGATED APPROVAL FORM
CHIEF CORPORATE OFFICER
DIRECTOR OF REAL ESTATE SERVICES**

TRACKING NO.: 2017-138

Approved pursuant to the Delegated Authority contained in City Council Item CC27.6 entitled "**Metrolinx-City of Toronto-Toronto Transit Commission Master Agreement for Light Rail Transit Projects**" adopted by City Council on October 30, 31 and November 1, 2012. City Council confirmatory By-law No. 1448-2012, enacted on November 1, 2012.

| | | | |
|----------------|--------------|------------|----------------------|
| Prepared By: | Trixy Pugh | Division: | Real Estate Services |
| Date Prepared: | May 31, 2017 | Phone No.: | (416) 392-8160 |

Chief Corporate Officer has approval authority to approve the disposal to Metrolinx of certain Transit Lands in accordance with the Real Estate Principles identified in the Master Agreement (on terms satisfactory to the Chief Corporate Officer and in a form acceptable to the City Solicitor).

| | |
|-------------------------|---|
| Purpose | To amend an existing licence to Metrolinx, at 2457 Eglinton Avenue East, to include additional lands, as required for the implementation of the Eglinton-Scarborough Crosstown Light Rail Transit Project (the "Project"). |
| Property | Part of City-owned land located at 2457 Eglinton Avenue East (the "Property"), shown as Part 3 on the draft Reference Plan in Appendix "A" (the "Additional Lands"). |
| Actions | <ol style="list-style-type: none"> Authority be granted to amend an existing temporary licence with Metrolinx, dated October 15, 2015, over the Additional Lands, to include more lands for the purpose of construction staging, commuter parking, and connecting the LRT concourse to the existing TTC subway concourse. The appropriate City Officials be authorized and directed to take the necessary action to give effect thereto. |
| Financial Impact | There is no financial impact resulting from this approval. |
| Comments | <p>Pursuant to Schedule F (Real Estate Protocol) contained in the Master Agreement between the City, the Toronto Transit Commission and Metrolinx for the implementation of the Toronto Light Rail Transit Program dated November 28, 2012 ("Master Agreement"), temporary use property requirements not required for City purposes are transferred to Metrolinx for nominal consideration.</p> <p>The Deputy City Manager & Chief Financial Officer has reviewed this DAF and agrees with the financial impact information.</p> <p>The Property is part of the Scarborough Rapid Transit Kennedy Station and TTC Commuter Parking Lot. There was an amendment to the draft reference plan used for the original DAF 2015-256 and Agreement dated October 15, 2015, to now include the Additional Lands.</p> <p>Under the Master Agreement established between Metrolinx, TTC and the City, Metrolinx has identified the subject property as a requirement for the Project.</p> <p>TTC has been consulted and concurs with the amendment.</p> |
| Terms | The existing terms as outlined in DAF 2015-256, and in the existing Licence dated October 15, 2015. |

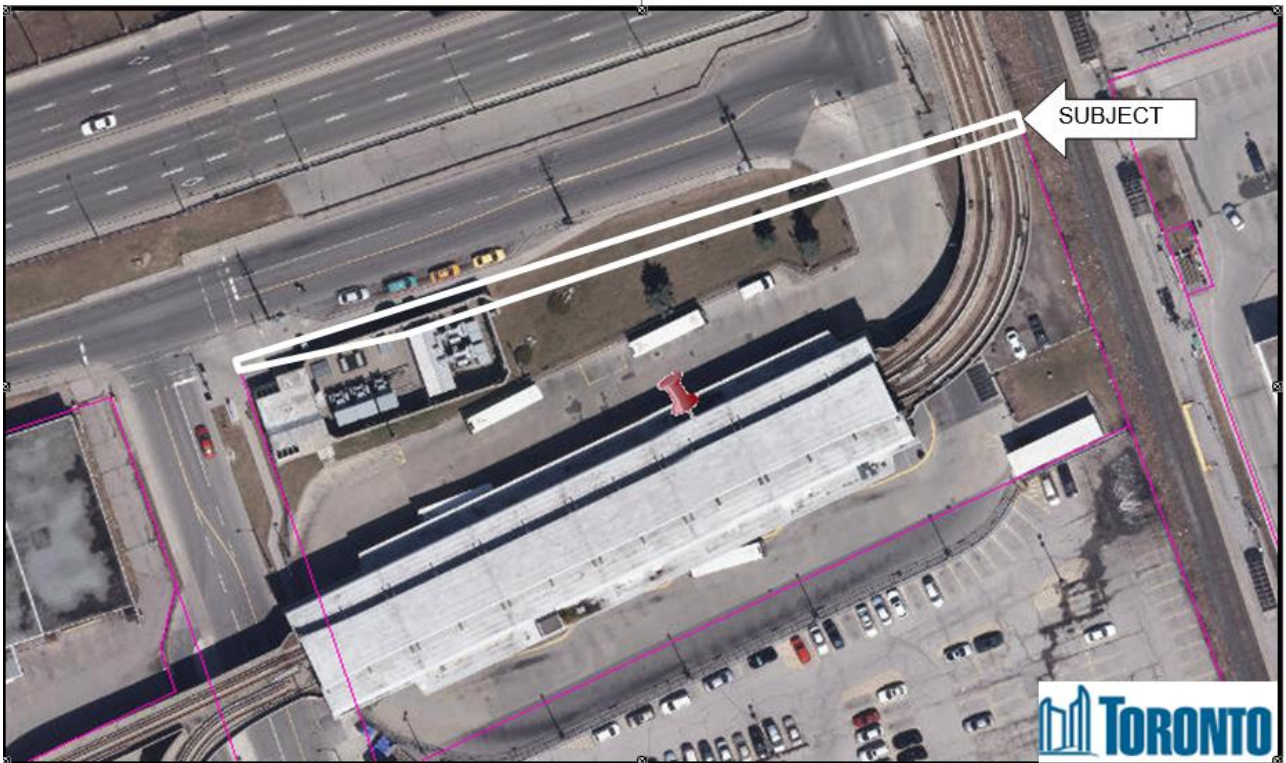
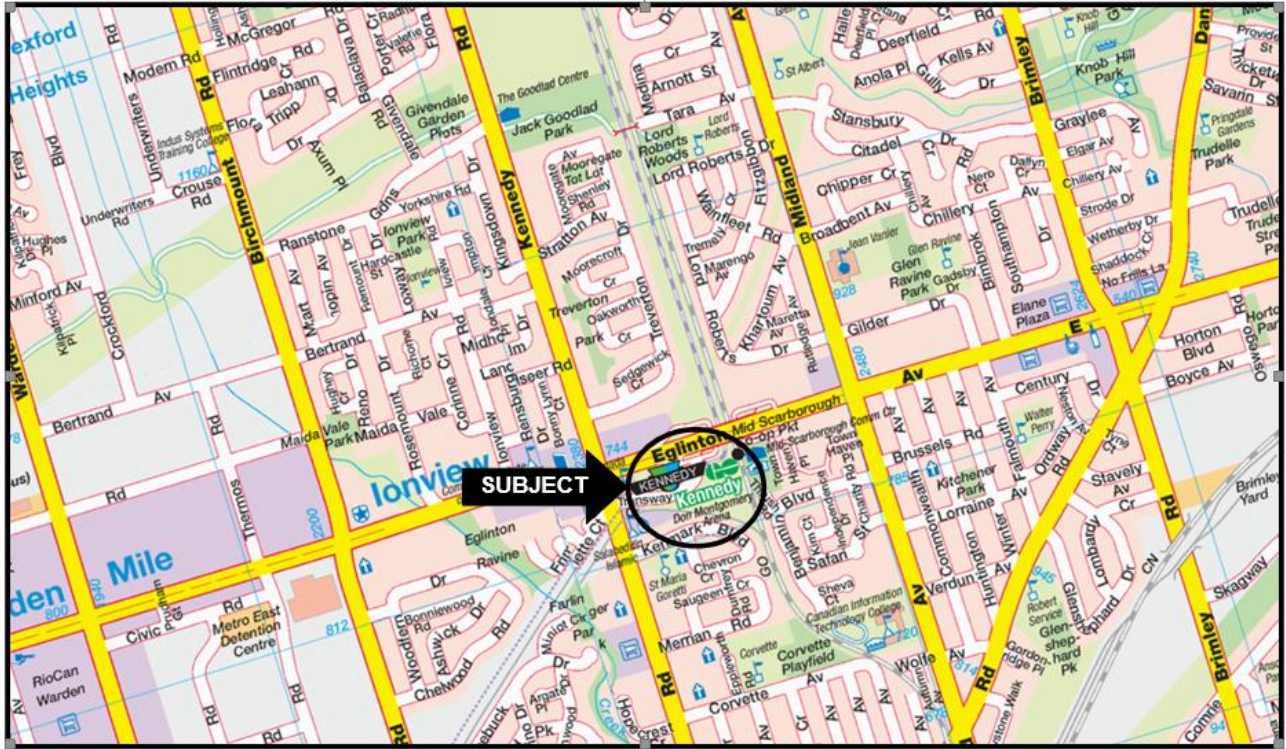
| | | |
|-------------------------|-----------------------------|---|
| Property Details | Ward: | 35 – Scarborough Southwest |
| | Assessment Roll No.: | 1901-04-1-221-00100 and part of 1901-04-1-221-00150 |
| | Approximate Size: | |
| | Approximate Area: | 430.7 m ² ± (4,636 ft ² ±) |
| | Other Information: | |

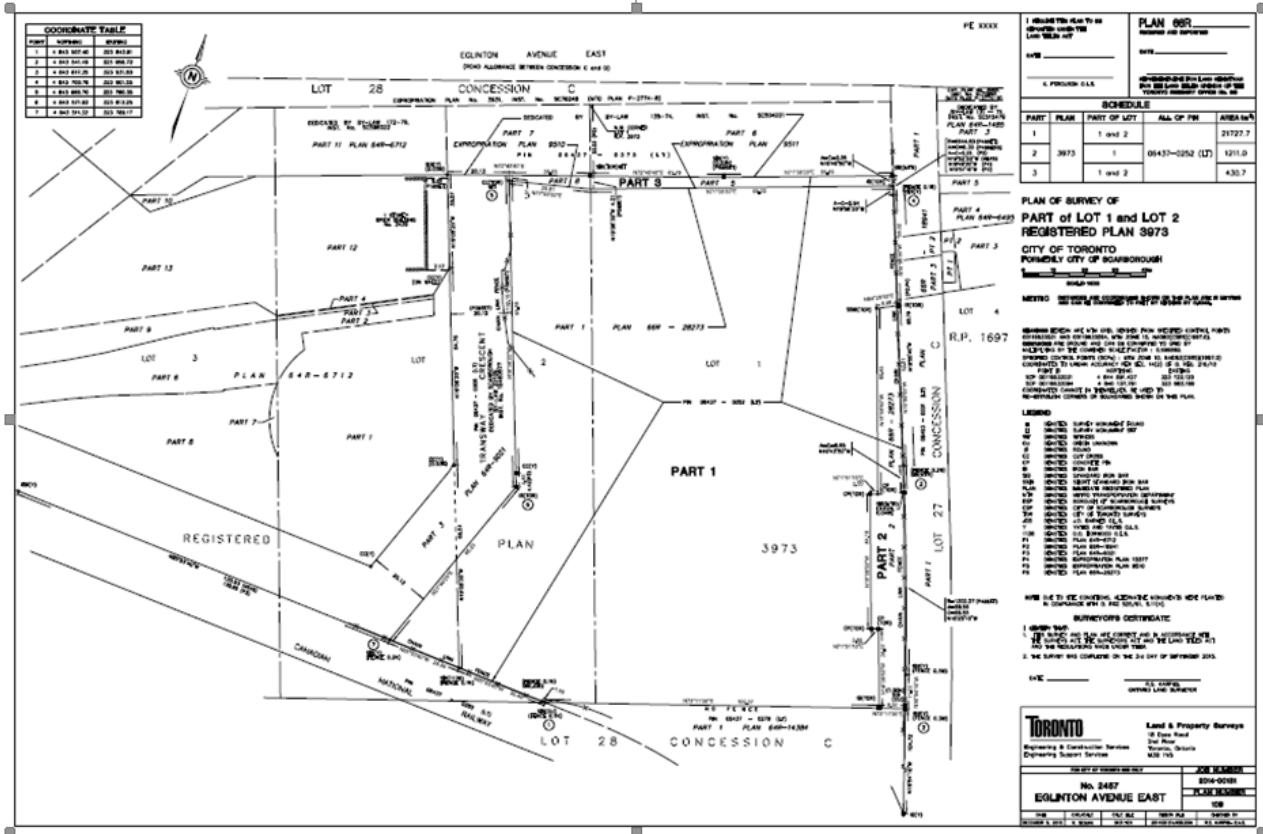
| Consultation with Councillor(s) | | | | | | | | | |
|---------------------------------|--------------------------|-------------------------------------|--------|--|------|---------------|--------------------------------------|--|--|
| Councillor: | Michelle Berardinetti | | | | | Councillor: | | | |
| Contact Name: | Michelle Berardinetti | | | | | Contact Name: | | | |
| Contacted by: | Phone | <input checked="" type="checkbox"/> | E-Mail | | Memo | | Other | | |
| Comments: | July 16, 2016 (notified) | | | | | Comments: | | | |
| Consultation with ABCDs | | | | | | | | | |
| Division: | TTC | | | | | Division: | Financial Planning | | |
| Contact Name: | Pam Kraft | | | | | Contact Name: | Filisha Mohammed | | |
| Comments: | Incorporated into DAF | | | | | Comments: | Incorporated into DAF (May 16, 2017) | | |
| Legal Division Contact | | | | | | | | | |
| Contact Name: | Lisa Davies (2-7270) | | | | | | | | |

| DAF Tracking No.: 2017-138 | Date | Signature |
|--|--------------|--------------|
| Recommended by: Manager | May 31, 2017 | Nick Simos |
| <input checked="" type="checkbox"/> Recommended by: Director of Real Estate Services Joe Casali | June 1, 2017 | Joe Casali |
| <input type="checkbox"/> Approved by: | | |
| <input checked="" type="checkbox"/> Approved by: Chief Corporate Officer Josie Scioli | June 1, 2017 | Josie Scioli |

Appendix "A"

DAF No. 2017-138





COORDINATE TABLE

| POINT | NORTHING | EASTING |
|-------|--------------|------------|
| 1 | 4 802 907.45 | 503 994.88 |
| 2 | 4 802 947.03 | 503 998.72 |
| 3 | 4 802 952.73 | 503 997.00 |
| 4 | 4 802 952.73 | 503 997.00 |
| 5 | 4 802 952.73 | 503 997.00 |
| 6 | 4 802 952.73 | 503 997.00 |
| 7 | 4 802 952.73 | 503 997.00 |
| 8 | 4 802 952.73 | 503 997.00 |
| 9 | 4 802 952.73 | 503 997.00 |
| 10 | 4 802 952.73 | 503 997.00 |
| 11 | 4 802 952.73 | 503 997.00 |
| 12 | 4 802 952.73 | 503 997.00 |
| 13 | 4 802 952.73 | 503 997.00 |
| 14 | 4 802 952.73 | 503 997.00 |
| 15 | 4 802 952.73 | 503 997.00 |
| 16 | 4 802 952.73 | 503 997.00 |
| 17 | 4 802 952.73 | 503 997.00 |
| 18 | 4 802 952.73 | 503 997.00 |
| 19 | 4 802 952.73 | 503 997.00 |
| 20 | 4 802 952.73 | 503 997.00 |
| 21 | 4 802 952.73 | 503 997.00 |
| 22 | 4 802 952.73 | 503 997.00 |
| 23 | 4 802 952.73 | 503 997.00 |
| 24 | 4 802 952.73 | 503 997.00 |
| 25 | 4 802 952.73 | 503 997.00 |
| 26 | 4 802 952.73 | 503 997.00 |
| 27 | 4 802 952.73 | 503 997.00 |
| 28 | 4 802 952.73 | 503 997.00 |
| 29 | 4 802 952.73 | 503 997.00 |
| 30 | 4 802 952.73 | 503 997.00 |
| 31 | 4 802 952.73 | 503 997.00 |
| 32 | 4 802 952.73 | 503 997.00 |
| 33 | 4 802 952.73 | 503 997.00 |
| 34 | 4 802 952.73 | 503 997.00 |
| 35 | 4 802 952.73 | 503 997.00 |
| 36 | 4 802 952.73 | 503 997.00 |
| 37 | 4 802 952.73 | 503 997.00 |
| 38 | 4 802 952.73 | 503 997.00 |
| 39 | 4 802 952.73 | 503 997.00 |
| 40 | 4 802 952.73 | 503 997.00 |
| 41 | 4 802 952.73 | 503 997.00 |
| 42 | 4 802 952.73 | 503 997.00 |
| 43 | 4 802 952.73 | 503 997.00 |
| 44 | 4 802 952.73 | 503 997.00 |
| 45 | 4 802 952.73 | 503 997.00 |
| 46 | 4 802 952.73 | 503 997.00 |
| 47 | 4 802 952.73 | 503 997.00 |
| 48 | 4 802 952.73 | 503 997.00 |
| 49 | 4 802 952.73 | 503 997.00 |
| 50 | 4 802 952.73 | 503 997.00 |
| 51 | 4 802 952.73 | 503 997.00 |
| 52 | 4 802 952.73 | 503 997.00 |
| 53 | 4 802 952.73 | 503 997.00 |
| 54 | 4 802 952.73 | 503 997.00 |
| 55 | 4 802 952.73 | 503 997.00 |
| 56 | 4 802 952.73 | 503 997.00 |
| 57 | 4 802 952.73 | 503 997.00 |
| 58 | 4 802 952.73 | 503 997.00 |
| 59 | 4 802 952.73 | 503 997.00 |
| 60 | 4 802 952.73 | 503 997.00 |
| 61 | 4 802 952.73 | 503 997.00 |
| 62 | 4 802 952.73 | 503 997.00 |
| 63 | 4 802 952.73 | 503 997.00 |
| 64 | 4 802 952.73 | 503 997.00 |
| 65 | 4 802 952.73 | 503 997.00 |
| 66 | 4 802 952.73 | 503 997.00 |
| 67 | 4 802 952.73 | 503 997.00 |
| 68 | 4 802 952.73 | 503 997.00 |
| 69 | 4 802 952.73 | 503 997.00 |
| 70 | 4 802 952.73 | 503 997.00 |
| 71 | 4 802 952.73 | 503 997.00 |
| 72 | 4 802 952.73 | 503 997.00 |
| 73 | 4 802 952.73 | 503 997.00 |
| 74 | 4 802 952.73 | 503 997.00 |
| 75 | 4 802 952.73 | 503 997.00 |
| 76 | 4 802 952.73 | 503 997.00 |
| 77 | 4 802 952.73 | 503 997.00 |
| 78 | 4 802 952.73 | 503 997.00 |
| 79 | 4 802 952.73 | 503 997.00 |
| 80 | 4 802 952.73 | 503 997.00 |
| 81 | 4 802 952.73 | 503 997.00 |
| 82 | 4 802 952.73 | 503 997.00 |
| 83 | 4 802 952.73 | 503 997.00 |
| 84 | 4 802 952.73 | 503 997.00 |
| 85 | 4 802 952.73 | 503 997.00 |
| 86 | 4 802 952.73 | 503 997.00 |
| 87 | 4 802 952.73 | 503 997.00 |
| 88 | 4 802 952.73 | 503 997.00 |
| 89 | 4 802 952.73 | 503 997.00 |
| 90 | 4 802 952.73 | 503 997.00 |
| 91 | 4 802 952.73 | 503 997.00 |
| 92 | 4 802 952.73 | 503 997.00 |
| 93 | 4 802 952.73 | 503 997.00 |
| 94 | 4 802 952.73 | 503 997.00 |
| 95 | 4 802 952.73 | 503 997.00 |
| 96 | 4 802 952.73 | 503 997.00 |
| 97 | 4 802 952.73 | 503 997.00 |
| 98 | 4 802 952.73 | 503 997.00 |
| 99 | 4 802 952.73 | 503 997.00 |
| 100 | 4 802 952.73 | 503 997.00 |

SCHEDULE

| PART | PLAN | PART OF LOT | ALL OF THE | AREA IN M ² |
|------|------|-------------|-----------------|------------------------|
| 1 | | 1 AND 2 | | 21727.7 |
| 2 | 2973 | 1 | 69437-1252 (LT) | 12211.0 |
| 3 | | 1 AND 2 | | 430.7 |

PLAN OF SURVEY OF PART OF LOT 1 AND LOT 2 REGISTERED PLAN 5973 CITY OF TORONTO FORMERLY CITY OF SCARBOROUGH

LEGEND

- 1. BOUNDARY
- 2. CONVEYANCE
- 3. EASEMENT
- 4. ENCUMBRANCE
- 5. EXISTING
- 6. FUTURE
- 7. INTEREST
- 8. LINES
- 9. MARKERS
- 10. METERS
- 11. NOTES
- 12. PLANS
- 13. RECORDS
- 14. SURVEY
- 15. TOWNSHIP
- 16. WELLS
- 17. ZONING

REGISTERED PLANS

| PLAN | DATE | DESCRIPTION |
|------|------|----------------|
| 1 | 1988 | PLAN 448-8712 |
| 2 | 1988 | PLAN 888-28273 |
| 3 | 1988 | PLAN 888-14384 |
| 4 | 1988 | PLAN 888-14384 |
| 5 | 1988 | PLAN 888-14384 |
| 6 | 1988 | PLAN 888-14384 |
| 7 | 1988 | PLAN 888-14384 |
| 8 | 1988 | PLAN 888-14384 |
| 9 | 1988 | PLAN 888-14384 |
| 10 | 1988 | PLAN 888-14384 |
| 11 | 1988 | PLAN 888-14384 |
| 12 | 1988 | PLAN 888-14384 |
| 13 | 1988 | PLAN 888-14384 |
| 14 | 1988 | PLAN 888-14384 |
| 15 | 1988 | PLAN 888-14384 |
| 16 | 1988 | PLAN 888-14384 |
| 17 | 1988 | PLAN 888-14384 |
| 18 | 1988 | PLAN 888-14384 |
| 19 | 1988 | PLAN 888-14384 |
| 20 | 1988 | PLAN 888-14384 |
| 21 | 1988 | PLAN 888-14384 |
| 22 | 1988 | PLAN 888-14384 |
| 23 | 1988 | PLAN 888-14384 |
| 24 | 1988 | PLAN 888-14384 |
| 25 | 1988 | PLAN 888-14384 |
| 26 | 1988 | PLAN 888-14384 |
| 27 | 1988 | PLAN 888-14384 |
| 28 | 1988 | PLAN 888-14384 |
| 29 | 1988 | PLAN 888-14384 |
| 30 | 1988 | PLAN 888-14384 |
| 31 | 1988 | PLAN 888-14384 |
| 32 | 1988 | PLAN 888-14384 |
| 33 | 1988 | PLAN 888-14384 |
| 34 | 1988 | PLAN 888-14384 |
| 35 | 1988 | PLAN 888-14384 |
| 36 | 1988 | PLAN 888-14384 |
| 37 | 1988 | PLAN 888-14384 |
| 38 | 1988 | PLAN 888-14384 |
| 39 | 1988 | PLAN 888-14384 |
| 40 | 1988 | PLAN 888-14384 |
| 41 | 1988 | PLAN 888-14384 |
| 42 | 1988 | PLAN 888-14384 |
| 43 | 1988 | PLAN 888-14384 |
| 44 | 1988 | PLAN 888-14384 |
| 45 | 1988 | PLAN 888-14384 |
| 46 | 1988 | PLAN 888-14384 |
| 47 | 1988 | PLAN 888-14384 |
| 48 | 1988 | PLAN 888-14384 |
| 49 | 1988 | PLAN 888-14384 |
| 50 | 1988 | PLAN 888-14384 |
| 51 | 1988 | PLAN 888-14384 |
| 52 | 1988 | PLAN 888-14384 |
| 53 | 1988 | PLAN 888-14384 |
| 54 | 1988 | PLAN 888-14384 |
| 55 | 1988 | PLAN 888-14384 |
| 56 | 1988 | PLAN 888-14384 |
| 57 | 1988 | PLAN 888-14384 |
| 58 | 1988 | PLAN 888-14384 |
| 59 | 1988 | PLAN 888-14384 |
| 60 | 1988 | PLAN 888-14384 |
| 61 | 1988 | PLAN 888-14384 |
| 62 | 1988 | PLAN 888-14384 |
| 63 | 1988 | PLAN 888-14384 |
| 64 | 1988 | PLAN 888-14384 |
| 65 | 1988 | PLAN 888-14384 |
| 66 | 1988 | PLAN 888-14384 |
| 67 | 1988 | PLAN 888-14384 |
| 68 | 1988 | PLAN 888-14384 |
| 69 | 1988 | PLAN 888-14384 |
| 70 | 1988 | PLAN 888-14384 |
| 71 | 1988 | PLAN 888-14384 |
| 72 | 1988 | PLAN 888-14384 |
| 73 | 1988 | PLAN 888-14384 |
| 74 | 1988 | PLAN 888-14384 |
| 75 | 1988 | PLAN 888-14384 |
| 76 | 1988 | PLAN 888-14384 |
| 77 | 1988 | PLAN 888-14384 |
| 78 | 1988 | PLAN 888-14384 |
| 79 | 1988 | PLAN 888-14384 |
| 80 | 1988 | PLAN 888-14384 |
| 81 | 1988 | PLAN 888-14384 |
| 82 | 1988 | PLAN 888-14384 |
| 83 | 1988 | PLAN 888-14384 |
| 84 | 1988 | PLAN 888-14384 |
| 85 | 1988 | PLAN 888-14384 |
| 86 | 1988 | PLAN 888-14384 |
| 87 | 1988 | PLAN 888-14384 |
| 88 | 1988 | PLAN 888-14384 |
| 89 | 1988 | PLAN 888-14384 |
| 90 | 1988 | PLAN 888-14384 |
| 91 | 1988 | PLAN 888-14384 |
| 92 | 1988 | PLAN 888-14384 |
| 93 | 1988 | PLAN 888-14384 |
| 94 | 1988 | PLAN 888-14384 |
| 95 | 1988 | PLAN 888-14384 |
| 96 | 1988 | PLAN 888-14384 |
| 97 | 1988 | PLAN 888-14384 |
| 98 | 1988 | PLAN 888-14384 |
| 99 | 1988 | PLAN 888-14384 |
| 100 | 1988 | PLAN 888-14384 |

Toronto Land & Property Services
 Engineering & Construction Services
 Planning & Construction Services
 Engineering Support Services

PLAN OF SURVEY
 No. 2487
 EGLINTON AVENUE EAST

DATE 2017-11-08
SCALE 1:1000
PROJECT 17-000-0000-0000-0000