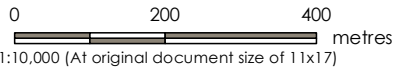


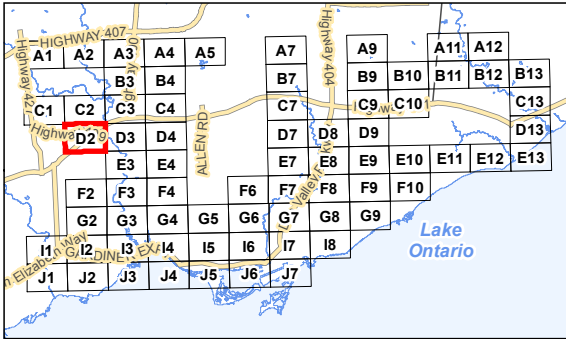


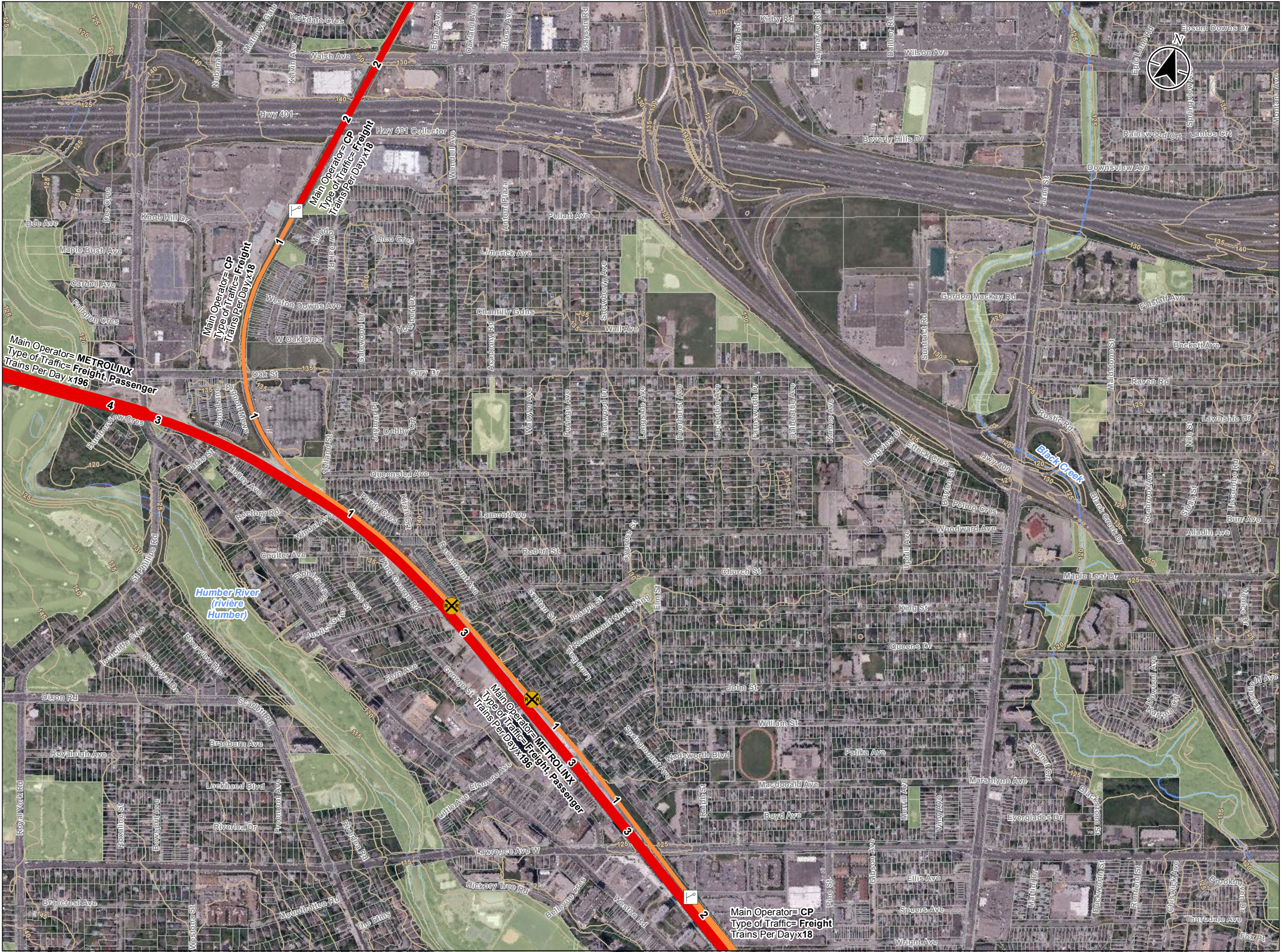
Legend

- Level Crossing
- Switch(es)
- Rail Yard
- Elevation Contour
masl (5 meter
Intervals)
- Watercourse
- Green Space/ Parks
- Parcel Fabric
- Waterbody
- Maximum Speed
Line Colour Represents
Speed (Max Passenger
Speed/Max Freight Speed)
 - Class 1 (15/10 mph)
 - Class 2 (30/25 mph)
 - Class 3 (60/40 mph)
 - Class 4 (80/60 mph)
 - Class 5 (100/80 mph)
- Number of Tracks
Line width represents
of tracks
 - 1
 - 2
 - 3
 - 4 or more
- Type of Railway
Line Pattern Represents
Railway Type
 - Principal Main Line
 - Secondary Line
 - Spur
 - Yard





- Notes
- Coordinate System: NAD 1927, 1974 adjustment3° Modified Transverse Mercator (MTM), Zone 10
 - Base features produced under license with the Ontario Ministry of Natural Resources and Forestry © Queen's Printer for Ontario, 2017.
 - Orthoimagery © First Base Solutions, 2016. Imagery Date, 2016.
 - Property Parcel Fabric and Green Space Contains information licensed under the Open Government Licence – Toronto








Legend


Level Crossing

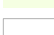
Switch(es)


Rail Yard

Elevation Contour
masl (5 meter
Intervals)

Watercourse

Green Space/ Parks

Parcel Fabric

Waterbody

Number of Tracks

Line width represents
of tracks

1

1

2

2

3

3

4

4 or more

Type of Railway

Line Pattern Represents
Railway Type

Principal Main Line

Secondary Line

Spur

Yard

Maximum Speed

Line Colour Represents
Speed (Max Passenger
Speed/Max Freight Speed)

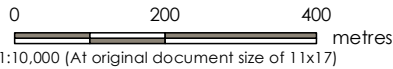
Class 1 (15/10 mph)

Class 2 (30/25 mph)

Class 3 (60/40 mph)

Class 4 (80/60 mph)

Class 5 (100/80 mph)

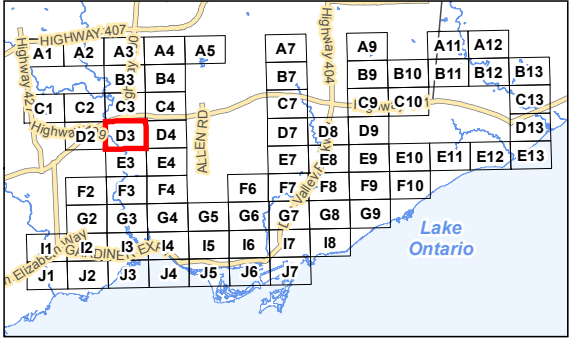


- Notes
1. Coordinate System: NAD 1927, 1974 adjustment3° Modified Transverse Mercator (MTM), Zone 10

2. Base features produced under license with the Ontario Ministry of Natural Resources and Forestry © Queen's Printer for Ontario, 2017.

3. Orthoimagery © First Base Solutions, 2016. Imagery Date, 2016.

4. Property Parcel Fabric and Green Space Contains information licensed under the Open Government Licence – Toronto



Project Location

City of Toronto

113520030 REV A

Prepared by DH on 2017-08-30

Technical Review by AW on 2017-06-29

Independent Review by SR on 2017-07-25

Client/Project

CITY OF TORONTO

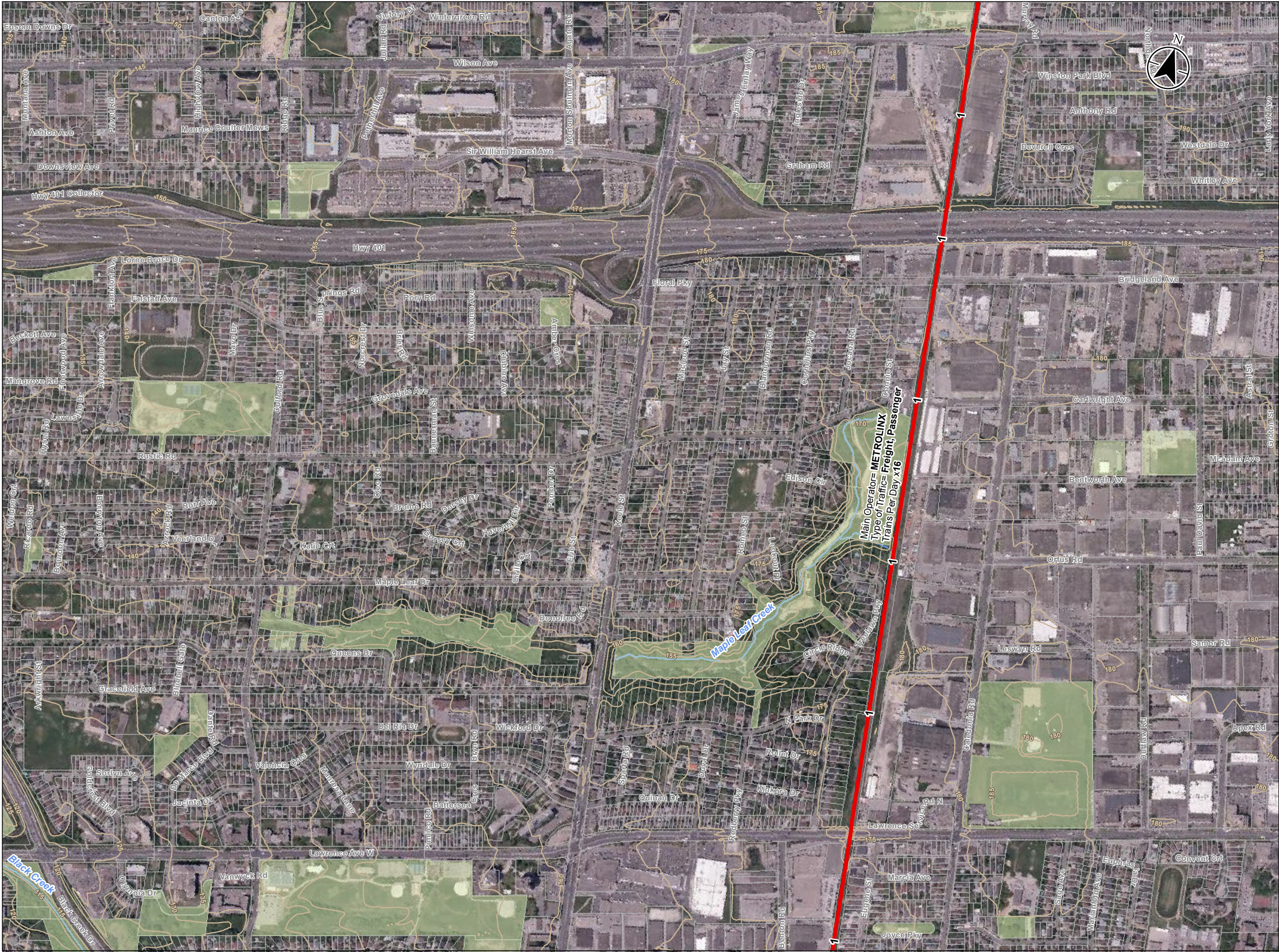
CITY-WIDE LAND USE STUDY: DEVELOPMENT IN PROXIMITY TO RAIL OPERATIONS

Title No.

D3

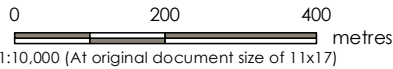
Title

City of Toronto Railways

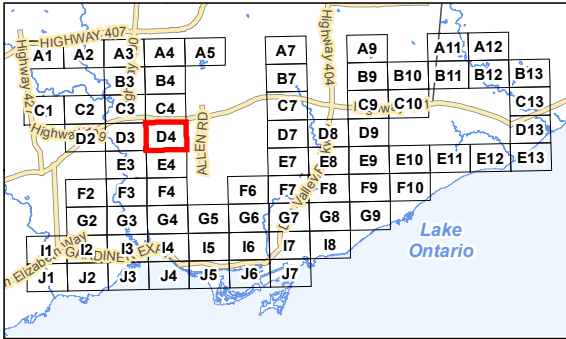


Legend

- Level Crossing
- Switch(es)
- Rail Yard
- Elevation Contour
masl (5 meter
Intervals)
- Watercourse
- Green Space/ Parks
- Parcel Fabric
- Waterbody
- Maximum Speed**
Line Colour Represents
Speed (Max Passenger
Speed/Max Freight Speed)
 - Class 1 (15/10 mph)
 - Class 2 (30/25 mph)
 - Class 3 (60/40 mph)
 - Class 4 (80/60 mph)
 - Class 5 (100/80 mph)
- Number of Tracks**
Line width represents
of tracks
 - 1
 - 2
 - 3
 - 4 or more
- Type of Railway**
Line Pattern Represents
Railway Type
 - Principal Main Line
 - Secondary Line
 - Spur
 - Yard



- Notes**
- Coordinate System: NAD 1927, 1974 adjustment3° Modified Transverse Mercator (MTM), Zone 10
 - Base features produced under license with the Ontario Ministry of Natural Resources and Forestry © Queen's Printer for Ontario, 2017.
 - Orthoimagery © First Base Solutions, 2016. Imagery Date, 2016.
 - Property Parcel Fabric and Green Space Contains information licensed under the Open Government Licence – Toronto



Project Location
City of Toronto

113520030 REVA
Prepared by DH on 2017-08-30
Technical Review by AW on 2017-06-29
Independent Review by SR on 2017-07-25

Client/Project
CITY OF TORONTO
CITY-WIDE LAND USE STUDY: DEVELOPMENT IN
PROXIMITY TO RAIL OPERATIONS

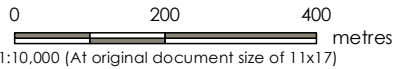
Title No.
D4

Title
City of Toronto Railways

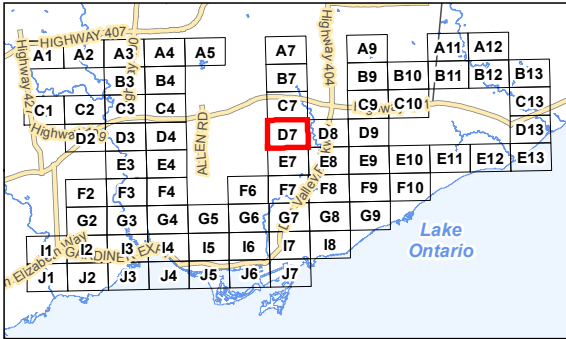


Legend

- Level Crossing
- Switch(es)
- Rail Yard
- Elevation Contour
masl (5 meter
Intervals)
- Watercourse
- Green Space/ Parks
- Parcel Fabric
- Waterbody
- Maximum Speed
Line Colour Represents
Speed (Max Passenger
Speed/Max Freight Speed)
- Class 1 (15/10 mph)
- Class 2 (30/25 mph)
- Class 3 (60/40 mph)
- Class 4 (80/60 mph)
- Class 5 (100/80 mph)
- Number of Tracks
Line width represents
of tracks
- 1
- 2
- 3
- 4 or more
- Type of Railway
Line Pattern Represents
Railway Type
- Principal Main Line
- Secondary Line
- Spur
- Yard



- Notes
- Coordinate System: NAD 1927, 1974 adjustment3° Modified Transverse Mercator (MTM), Zone 10
 - Base features produced under license with the Ontario Ministry of Natural Resources and Forestry © Queen's Printer for Ontario, 2017.
 - Orthoimagery © First Base Solutions, 2016. Imagery Date, 2016.
 - Property Parcel Fabric and Green Space Contains information licensed under the Open Government Licence – Toronto



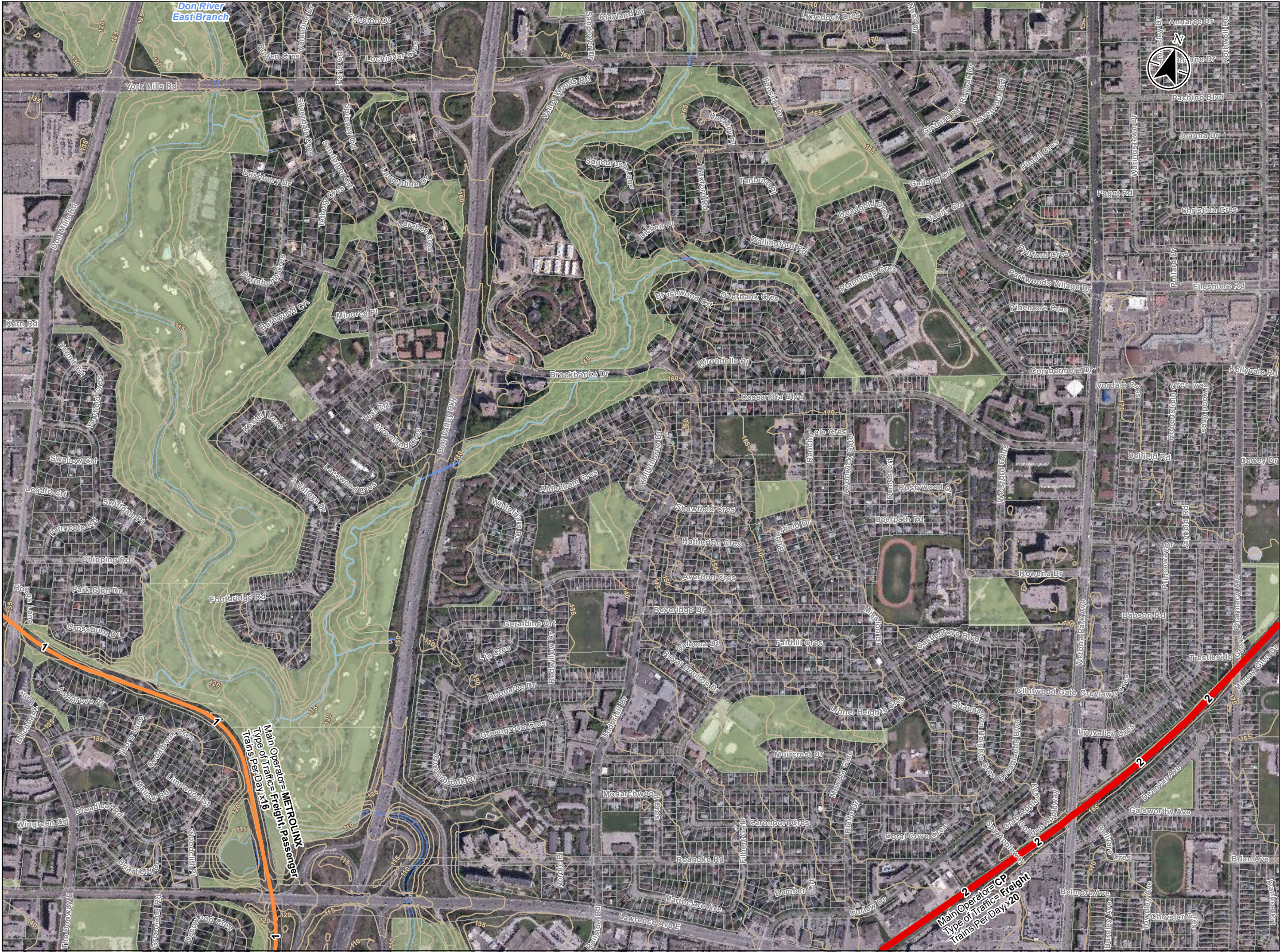
Project Location
City of Toronto

113520030 REVA
Prepared by DH on 2017-08-30
Technical Review by AW on 2017-06-29
Independent Review by SR on 2017-07-25

Client/Project
CITY OF TORONTO
CITY-WIDE LAND USE STUDY: DEVELOPMENT IN
PROXIMITY TO RAIL OPERATIONS

Title No.
D7

Title
City of Toronto Railways



Legend

- Level Crossing
- Switch(es)
- Rail Yard
- Elevation Contour
masl (5 meter
Intervals)
- Watercourse
- Green Space/ Parks
- Parcel Fabric
- Waterbody

Number of Tracks
Line width represents
of tracks

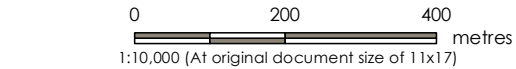
- 1
- 2
- 3
- 4 or more

Type of Railway
Line Pattern Represents
Railway Type

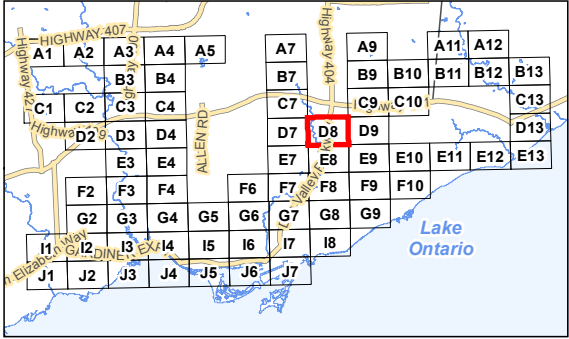
- Principal Main Line
- Secondary Line
- Spur
- Yard

Maximum Speed
Line Colour Represents
Speed (Max Passenger
Speed/Max Freight Speed)

- Class 1 (15/10 mph)
- Class 2 (30/25 mph)
- Class 3 (60/40 mph)
- Class 4 (80/60 mph)
- Class 5 (100/80 mph)



- Notes**
1. Coordinate System: NAD 1927, 1974 adjustment3° Modified Transverse Mercator (MTM), Zone 10
 2. Base features produced under license with the Ontario Ministry of Natural Resources and Forestry © Queen's Printer for Ontario, 2017.
 3. Orthoimagery © First Base Solutions, 2016. Imagery Date, 2016.
 4. Property Parcel Fabric and Green Space Contains information licensed under the Open Government Licence – Toronto



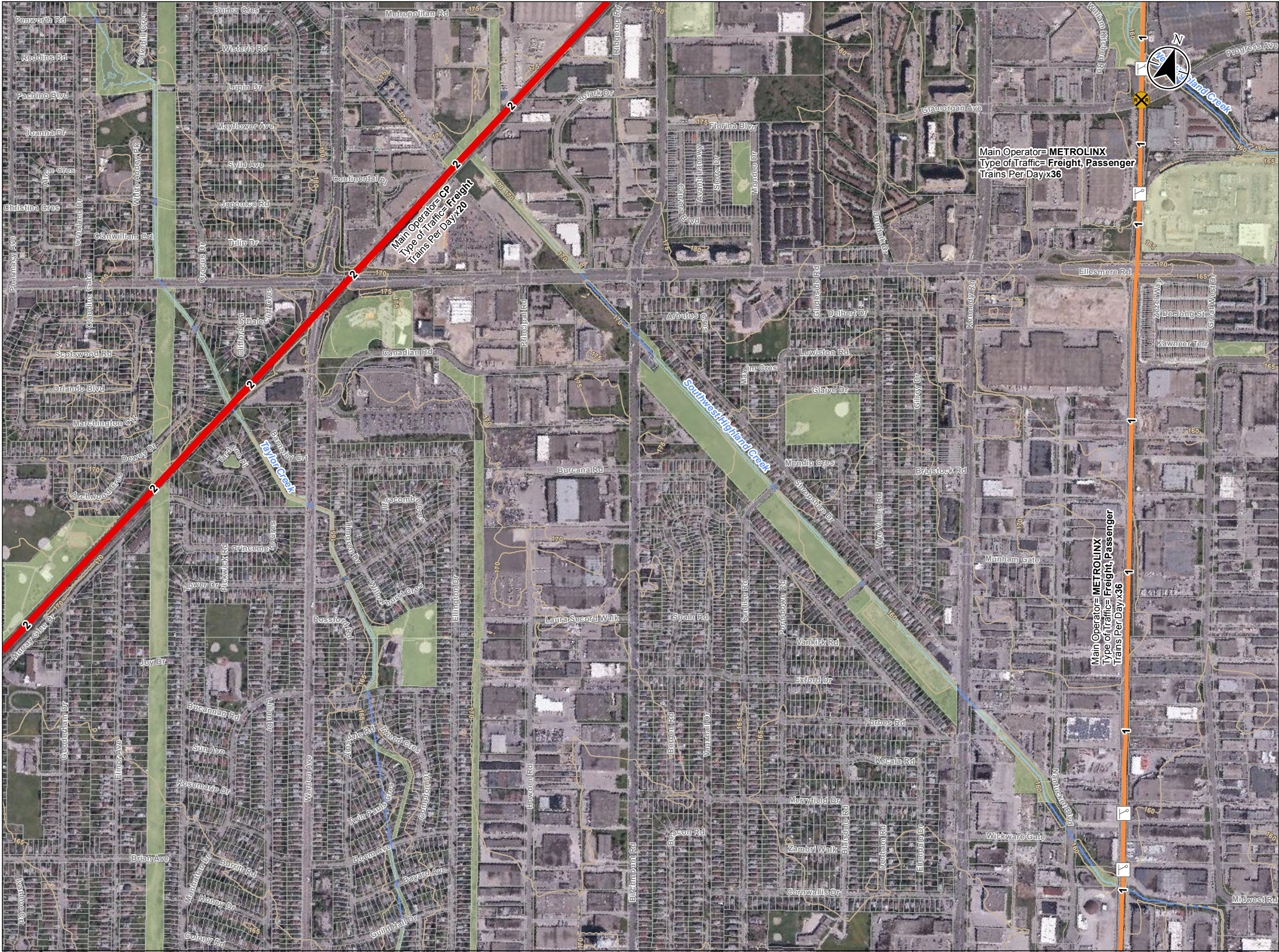
Project Location
City of Toronto

113520030 REV A
Prepared by DH on 2017-08-30
Technical Review by AW on 2017-06-29
Independent Review by SR on 2017-07-25

Client/Project
CITY OF TORONTO
CITY-WIDE LAND USE STUDY: DEVELOPMENT IN
PROXIMITY TO RAIL OPERATIONS

Title No.
D8

Title
City of Toronto Railways

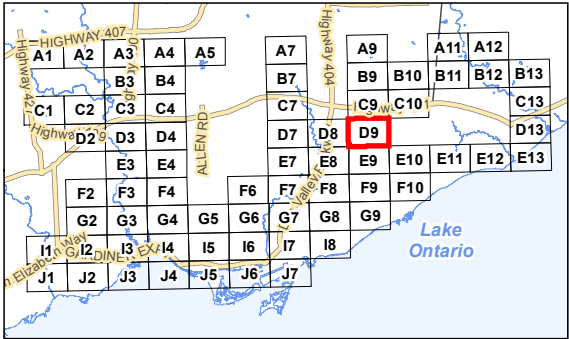


Legend

- Level Crossing
- Switch(es)
- Rail Yard
- Elevation Contour
masl (5 meter
Intervals)
- Watercourse
- Green Space/ Parks
- Parcel Fabric
- Waterbody
- Maximum Speed
Line Colour Represents
Speed (Max Passenger
Speed/Max Freight Speed)
 - Class 1 (15/10 mph)
 - Class 2 (30/25 mph)
 - Class 3 (60/40 mph)
 - Class 4 (80/60 mph)
 - Class 5 (100/80 mph)
- Number of Tracks
Line width represents
of tracks
 - 1
 - 2
 - 3
 - 4 or more
- Type of Railway
Line Pattern Represents
Railway Type
 - Principal Main Line
 - Secondary Line
 - Spur
 - Yard

0 200 400
metres
1:10,000 (At original document size of 11x17)

- Notes
- Coordinate System: NAD 1927, 1974 adjustment3° Modified Transverse Mercator (MTM), Zone 10
 - Base features produced under license with the Ontario Ministry of Natural Resources and Forestry © Queen's Printer for Ontario, 2017.
 - Orthimagery © First Base Solutions, 2016. Imagery Date, 2016.
 - Property Parcel Fabric and Green Space Contains information licensed under the Open Government Licence – Toronto



Project Location
City of Toronto

113520030 REVA
Prepared by DH on 2017-08-30
Technical Review by AW on 2017-06-29
Independent Review by SR on 2017-07-25


Client/Project
CITY OF TORONTO
CITY-WIDE LAND USE STUDY: DEVELOPMENT IN
PROXIMITY TO RAIL OPERATIONS


Title No.
D9


Title
City of Toronto Railways





Legend


Level Crossing

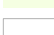
Switch(es)


Rail Yard

Elevation Contour
masl (5 meter
Intervals)

Watercourse

Green Space/ Parks

Parcel Fabric

Waterbody

Number of Tracks

Line width represents
of tracks

1

1

2

2

3

3

4

4 or more

Type of Railway

Line Pattern Represents
Railway Type

Principal Main Line

Secondary Line

Spur

Yard

Maximum Speed

Line Colour Represents
Speed (Max Passenger
Speed/Max Freight Speed)

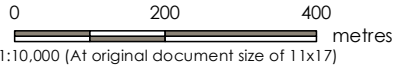
Class 1 (15/10 mph)

Class 2 (30/25 mph)

Class 3 (60/40 mph)

Class 4 (80/60 mph)

Class 5 (100/80 mph)

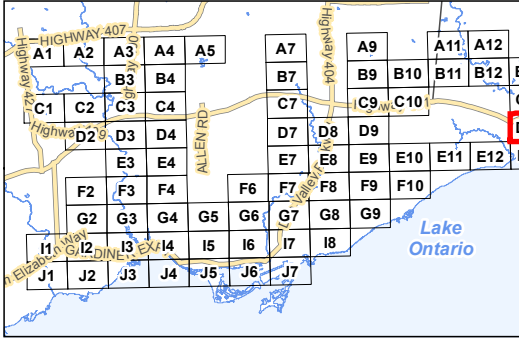


- Notes
1. Coordinate System: NAD 1927, 1974 adjustment3° Modified Transverse Mercator (MTM), Zone 10

2. Base features produced under license with the Ontario Ministry of Natural Resources and Forestry © Queen's Printer for Ontario, 2017.

3. Orthoimagery © First Base Solutions, 2016. Imagery Date, 2016.

4. Property Parcel Fabric and Green Space Contains information licensed under the Open Government Licence – Toronto



Project Location

City of Toronto

113520030 REVA

Prepared by DH on 2017-08-30

Technical Review by AW on 2017-06-29

Independent Review by SR on 2017-07-25

Client/Project

CITY OF TORONTO

CITY-WIDE LAND USE STUDY: DEVELOPMENT IN

PROXIMITY TO RAIL OPERATIONS

Title No.

D13

Title

City of Toronto Railways