

February 9, 2017

2016 Census: Population and Dwelling Counts

The 2016 Census Day was May 10, 2016. On February 8, 2017, Statistics Canada released its first set of data from this Census, on population and dwelling counts.

KEY POINTS

Population

- The 2016 population of Toronto is 2,731,571, or 7.8% of Canada's total population of 35,151,728. The data is not adjusted for undercoverage (see Glossary).
- Toronto's population grew by 116,511 residents between 2011 and 2016, an increase of 4.5%. This is more than the number of people added between 2006 and 2011 of 111,779 or 4.5%.
- Three cities in Canada saw their population grow by more than 100,000 people between 2011 and 2016: Calgary, up by 142,387; Edmonton, up by 120,345; and Toronto with 116,511 more people.
- 228,290 more people live in Toronto than were here a decade ago.
- The 2016 population of the Greater Toronto and Hamilton Area (GTHA) is 6,954,433, or 19.8% of Canada's population. The city of Toronto accounts for 39.3% of the GTHA's population. This is down slightly from 39.8% of the GTHA in 2011.
- Between 2011 and 2016, the GTHA's population increased by 5.8% or by 380,293 persons. Toronto accounts for about 30.6% of the GTHA's growth. This is compared to 21.8% of the GTHA growth between 2006 and 2011. The city's share of the GTHA growth has increased by 40.4%.
- The growth rates of the GTHA regions and single-tier municipalities ranged between 3.3% and 9.3%. Halton Region had the strongest growth rate at 9.3%, followed by York Region at 7.5%, Peel Region at 6.5%, Durham Region with 6.2% and Hamilton at 3.3%.
- Growth rates varied across the GTHA's 26 municipalities, ranging from 0.2% to 30.5%. This includes the single-tier municipalities of Toronto and Hamilton and the cities and towns in the GTHA.
- The five fastest-growing municipalities in the GTHA with a population growth rate of more than 10% include Milton at 30.5%, followed by King at 23.2%, Whitchurch-Stouffville at 21.8%, Brampton at 13.3% and Caledon at 11.8%.
- Although Statistics Canada makes a great effort to count every person, in each Census a notable number of people are left out for a variety of reasons. For

example, people may be travelling, some dwellings are hard to find, and some people simply refuse to participate. Statistics Canada takes this into account and for each Census estimates a net 'undercoverage' rate for the urban region, the Toronto Census Metropolitan Area (CMA), but not for the city. The 2011 rate for the Toronto CMA was 3.72% \pm 0.53%. The 2016 rate is not yet available. If the rate were the same for 2016, the city's actual population could be 2,853,000.

- The city's population is on track with the population forecast in the Provincial Growth Plan for the Greater Golden Horseshoe (GGH). The Growth Plan as amended in 2013 includes population forecasts to 2041 which are used for planning and growth management. The forecasts supporting the Growth Plan anticipated a 2016 population including undercoverage for the city of Toronto of 2,865,000. The city's estimated actual population in 2016 of 2,853,000 is very close to the level anticipated by the forecasts supporting the Growth Plan.
- The total population has changed unevenly across the city. About half of the population growth in the city of Toronto from 2011 to 2016 was south of Bloor Street, between Victoria Park Avenue in the east and the Humber River in the west.
- Toronto's highest growth neighbourhoods are located in Downtown, especially the Waterfront Communities-The Island, Bay Street Corridor, and Moss Park neighbourhoods. High growth was also seen west of Downtown in Niagara and Little Portugal, and further west in the Mimico and Islington-City Centre West neighbourhoods. Another cluster of neighbourhoods that experienced high population growth is along the north side of Highway 401, especially along the Sheppard West corridor. Further west along Highway 401, Pelmo Park-Humberlea also saw very high growth.
- The Weston-Pelham Park neighbourhood experienced the greatest drop in population as a percentage, but the largest total population declines were in the neighbourhoods of Malvern and Agincourt North. Other neighbourhoods with population declines are on the edges of Downtown e.g. Kensington-Chinatown and Cabbagetown-South St. James Town and various other neighbourhoods across the city such as Glenfield-Jane Heights and West Humber-Clairville.
- Map 1 shows population counts by Census Tract for the city of Toronto.
- Maps 2 and 3 show population change across the GTHA and the city of Toronto.
- Maps 4 and 5 show population and population change by city of Toronto neighbourhoods.

Dwellings

- The number of occupied private dwellings in Toronto grew from 1,047,877 in 2011 to 1,112,929 in 2016.
- Occupied private dwellings in the city of Toronto increased by 65,052 between 2011 and 2016. This represents 6.2% growth since 2011. This compares with an increase of 68,547 occupied dwellings or 7.0% growth between 2006 and 2011, and an added 36,250 occupied dwellings or 3.8% between 2001 and 2006.

- According to the Canada Mortgage and Housing Corporation (CMHC), there were 84,748 dwelling completions in the city during a similar period as the 2016 Census, May 1, 2011 to April 30, 2016. CMHC also reports that 96.2% of units completed between 2011 and 2016 inclusive were absorbed, meaning that they were bought or rented. This indicates that there is a strong market for the units that are being built in the city, even if all of them have not yet become occupied.
- Between 2011 and 2016, occupied dwellings in the GTHA increased by 6.8% from 2,370,924 to 2,532,672. In 2016, the city of Toronto was home to 43.9% of all GTHA dwellings.
- Toronto accounted for 40.2% of the GTHA's increase in occupied dwelling units between 2011 and 2016. This compares to a 32.5% share of the increase between 2006 and 2011.
- In the GTHA, York Region showed the largest growth in occupied dwelling units, an increase of 10.4%, followed by Halton Region at 7.8%, Peel Region at 6.8%, Durham Region at 6.6% and Hamilton at 3.8%. The city of Toronto's growth rate was 6.2%. At 65,052 occupied dwellings, the city's growth in occupied units is much higher than that of any other municipality in the GTHA.
- The growth in occupied units in the GTHA was lower over the 2011-2016 period than the previous five years. The greatest declines were York Region at 10.4%, down from 17.4% and Halton Region at 7.8%, down from 14.1% five years earlier.
- The average number of persons per occupied dwelling in the city of Toronto has declined slightly from 2.50 in 2011 to 2.45 in 2016. This average has also declined in many other GTHA municipalities.
- There are strong prospects for continued population growth in the city of Toronto. The City tracks all applications for proposed residential development. There were 321,200 residential units in active development projects between July 1, 2011 and June 30, 2016. Of these, approximately 127,200 proposed units were approved but not yet built. Most of these proposed units are apartments. If these proposed units were occupied at the same rate as apartments in buildings of 5 or more storeys built between 2006 and 2011, they would house about 213,500 persons. These units represent some of the potential for additional population in the near future.

GLOSSARY

Statistics Canada maintains a [Census Dictionary](http://www12.statcan.gc.ca/census-recensement/2016/ref/dict/index-eng.cfm) for the Census of Population, 2016, available online at: <http://www12.statcan.gc.ca/census-recensement/2016/ref/dict/index-eng.cfm>. Many more terms associated with the Census can be found there.

Census Metropolitan Area (CMA): one or more adjacent municipalities centred on a core population centre. To be included in a CMA, the adjacent municipalities must have a high degree of integration with the core. Integration is measured by commuting flows.

Census Tract (CT): a small, geographic area, typically with a population smaller than 10,000 persons. Their geography is relatively stable over time to allow for comparison of changes from Census to Census.

Centre: as seen in Maps 1 and 2, Centres are defined in the City of Toronto Official Plan. They play an important role in how the City manages growth. The Scarborough, North York, Etobicoke and Yonge-Eglinton Centres are places with excellent transit accessibility where jobs, housing and services will be concentrated in dynamic mixed use settings with different levels of activity and intensity. More information can be found in the [Toronto Official Plan](#).

GTHA refers to the Greater Toronto and Hamilton Area. This area is comprised of the single-tier municipalities of Toronto and Hamilton, the regional municipalities of York, Durham, Peel, and Halton, and the cities and towns within the GTHA regional municipalities. This is not the same geography as the Toronto Census Metropolitan Area as defined by Statistics Canada.

Neighbourhood: The City of Toronto identifies 140 social planning neighbourhoods to help government and community agencies with their local planning. These neighbourhoods allow the provision of socio-economic data at a meaningful geographic area. Not all people define neighbourhoods the same way, but for the purposes of statistical reporting these neighbourhoods were defined based on Statistics Canada census tracts. More information about [City of Toronto neighbourhoods](#) can be found on the City's website.

Undercoverage: is the number of persons excluded by the Census who should have been counted, as determined by Statistics Canada. Although Statistics Canada makes a great effort to count every person, in each Census a notable number of people are left out for a variety of reasons. For example, people may be traveling, some dwellings are hard to find, and some people simply refuse to participate. Overcoverage can also occur, when people are counted more than once or should not have been counted in a given population. Undercoverage is generally more common than overcoverage. The total impact of the coverage errors is the net undercoverage.

NOTES

All data in this backgrounder are based on geographic boundaries available at time of writing. In the event of any future boundary revisions, some data totals may change. This is especially the case for small area units such as Census Tracts.

The information previously collected by the long-form Census questionnaire was collected in 2011 as part of the voluntary National Household Survey. In 2016, Statistics Canada restored the mandatory long-form Census questionnaire in an effort to improve data collection. The numbers reported in this backgrounder are based on the mandatory short-form component of the Census for both 2011 and 2016, and therefore can be compared. In future backgrounders timed with later releases from the 2016 Census, the numbers will reflect the long-form Census and are anticipated to be more comprehensive than those of the 2011 National Household Survey.

FUTURE CENSUS RELEASES

The City of Toronto will be releasing more backgrounders coinciding with each Census release, except for the Census of Agriculture. The Census release schedule is available from Statistics Canada, online at: <https://www12.statcan.gc.ca/census-recensement/index-eng.cfm>. The City of Toronto will be preparing backgrounders for the following releases:

May 3, 2017	Age and sex Type of dwelling
August 2, 2017	Families, households and marital status Language
September 13, 2017	Income
October 25, 2017	Immigration and ethnocultural diversity Housing Aboriginal peoples
November 29, 2017	Education Labour Journey to work Language of work Mobility and migration

REFERENCES

Prepared by staff from:

- Children's Services, Service System Planning and Policy Development
- City Manager's Office, Human Resources
- City Planning, Research and Information
- Economic Development, Research and Information Systems
- Social Development, Finance and Administration, Social Policy Analysis and Research
- Toronto Police Service, Business Intelligence & Analytics Unit
- Toronto Public Health
- Toronto Water
- Transportation Services, Big Data Innovation Team

Media contact: Bruce Hawkins, Strategic Communications, 416-392-3496, bruce.hawkins@toronto.ca

Staff contact: Michael Wright, City Planning, Research and Information
Tel: 416-392-7558; Fax: 416-392-3821; TTY: 416-392-8764
michael.wright@toronto.ca

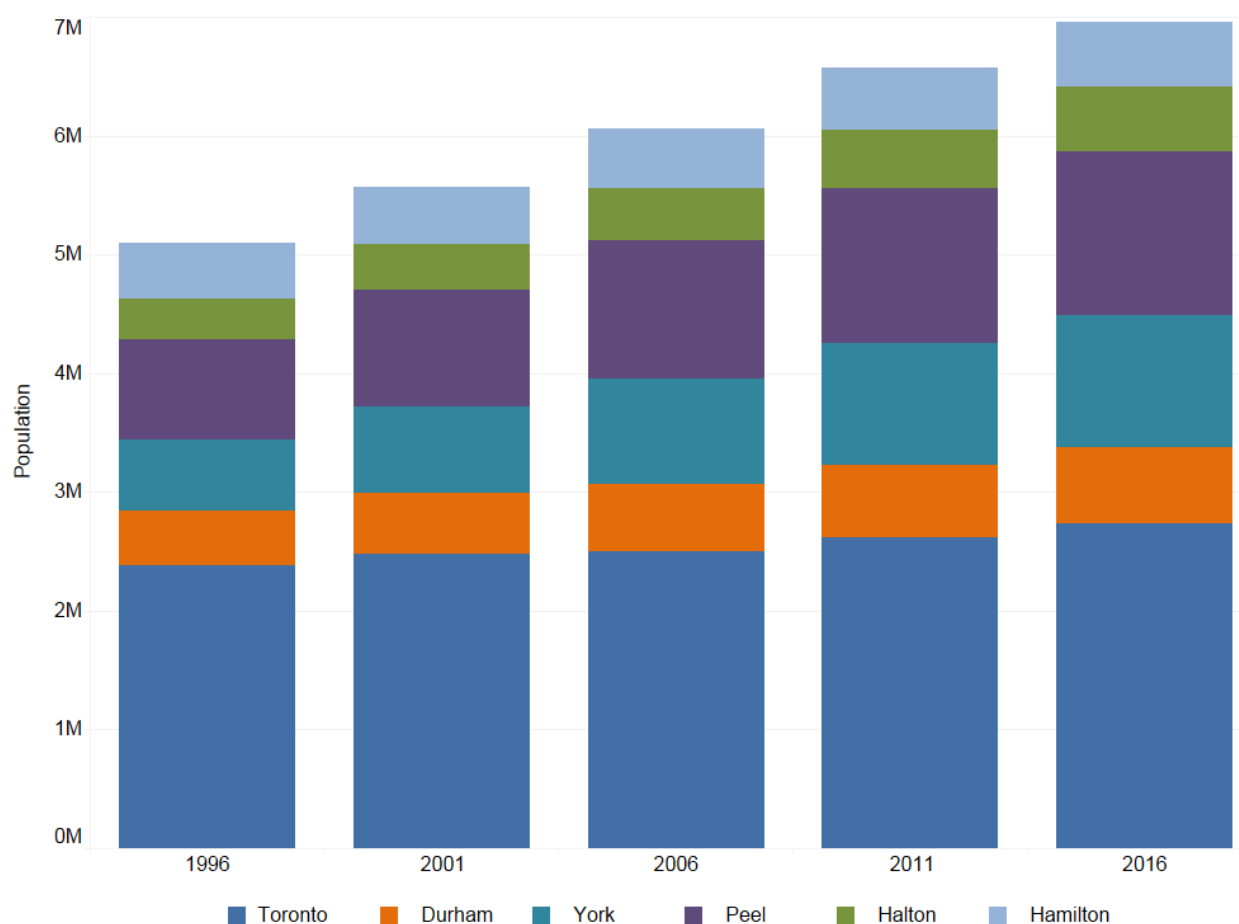
TABLES, CHARTS AND MAPS

Population, 1996-2016, Greater Toronto and Hamilton Area

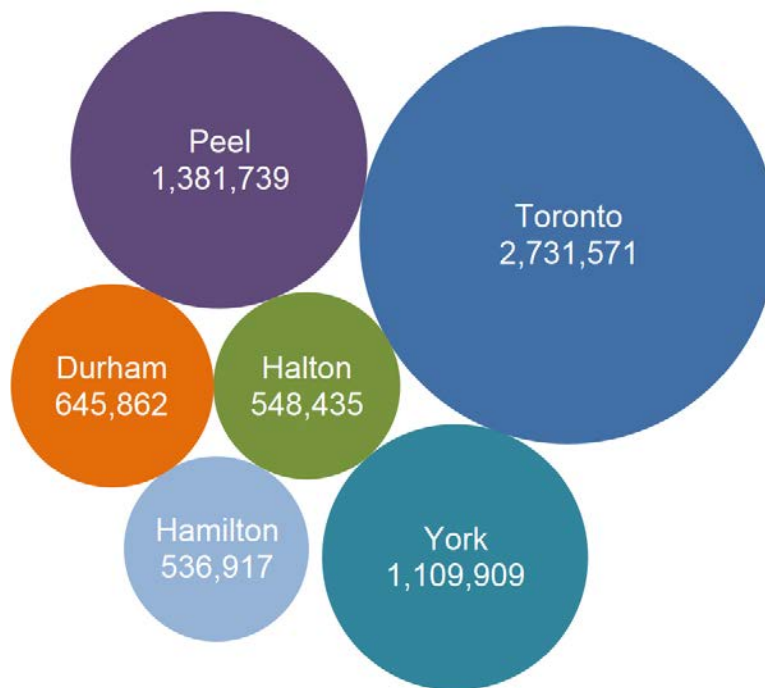
	1996	2001	2006	2011	2016	Change			
						1996-2001	2001-2006	2006-2011	2011-2016
GTHA	5,096,682	5,572,094	6,060,471	6,574,140	6,954,433	475,412	488,377	513,669	380,293
Toronto	2,385,421	2,481,494	2,503,281	2,615,060	2,731,571	96,073	21,787	111,779	116,511
Rest of the GTHA	2,711,261	3,090,600	3,557,190	3,959,080	4,222,862	379,339	466,590	401,890	263,782
Durham	458,616	506,901	561,258	608,124	645,862	48,285	54,357	46,866	37,738
York	592,445	729,254	892,712	1,032,524	1,109,909	136,809	163,458	139,812	77,385
Peel	852,526	988,948	1,159,405	1,296,814	1,381,739	136,422	170,457	137,409	84,925
Halton	339,875	375,229	439,256	501,669	548,435	35,354	64,027	62,413	46,766
Hamilton	467,799	490,268	504,559	519,949	536,917	22,469	14,291	15,390	16,968
Toronto % of GTHA	46.8	44.5	41.3	39.8	39.3	20.2	4.5	21.8	30.6

Source: Statistics Canada, Censuses 1996 - 2016

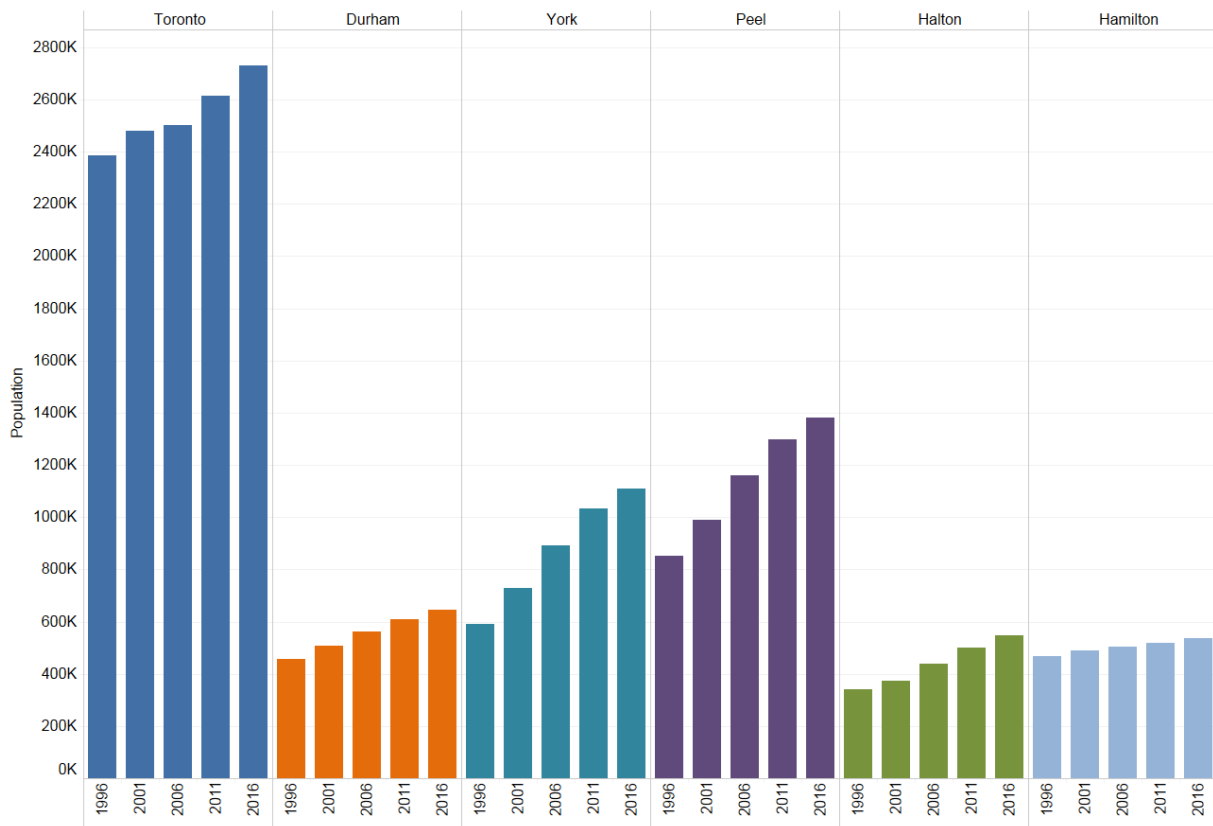
Population, 1996-2016, Greater Toronto and Hamilton Area

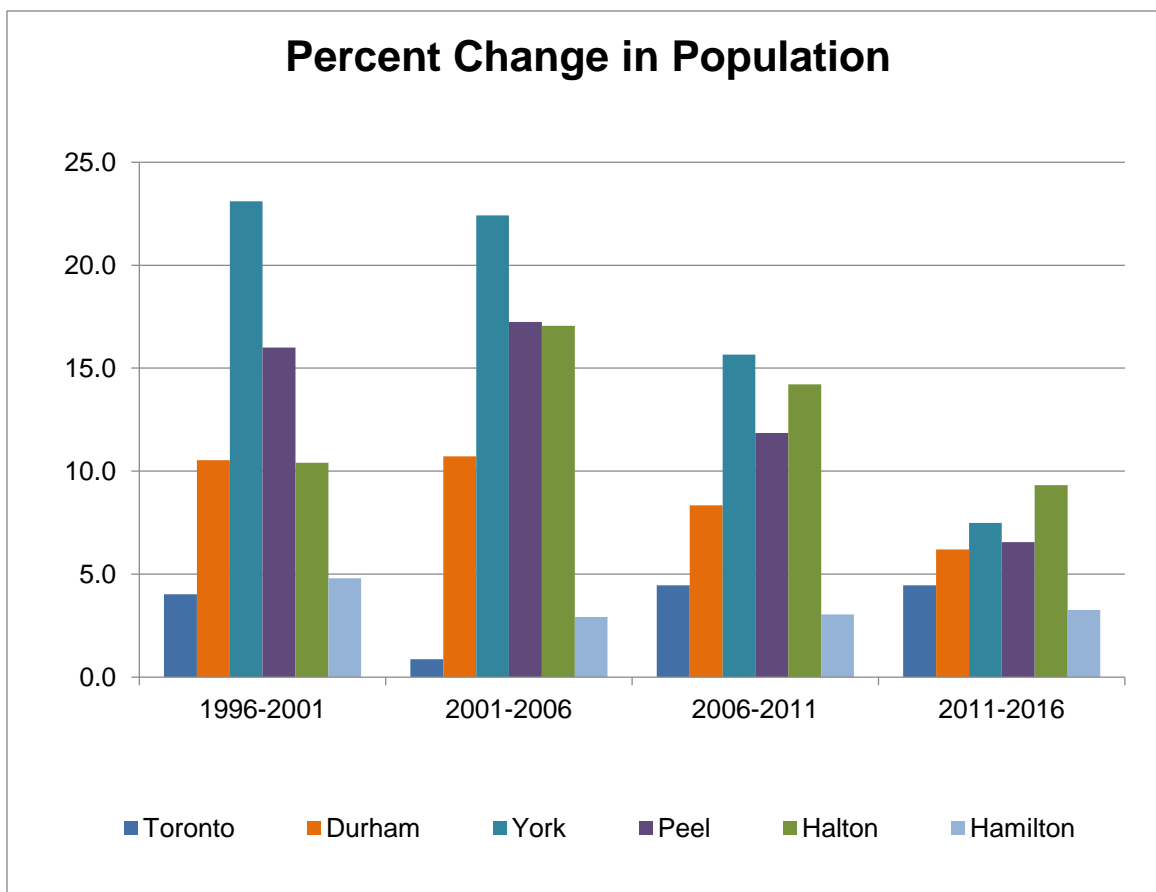


2016 Population by Municipality, Greater Toronto and Hamilton Area



Population Change by Municipality, 1996-2016, Greater Toronto and Hamilton Area

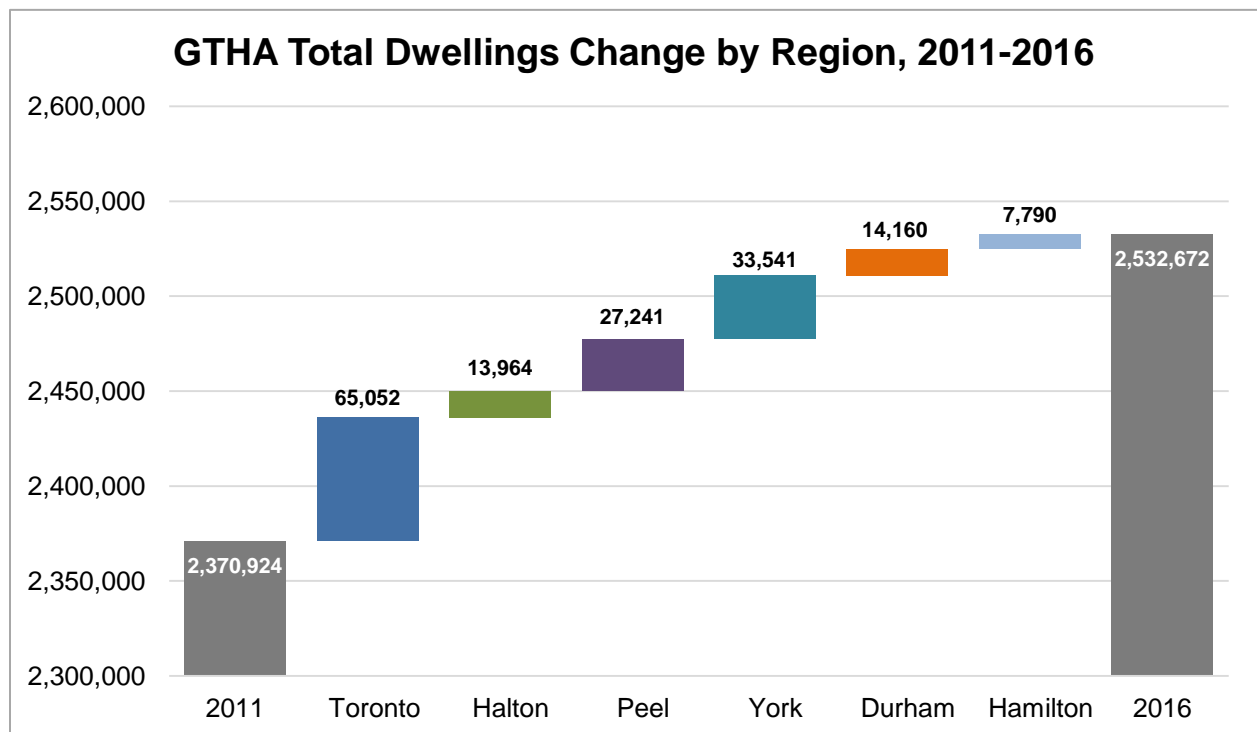
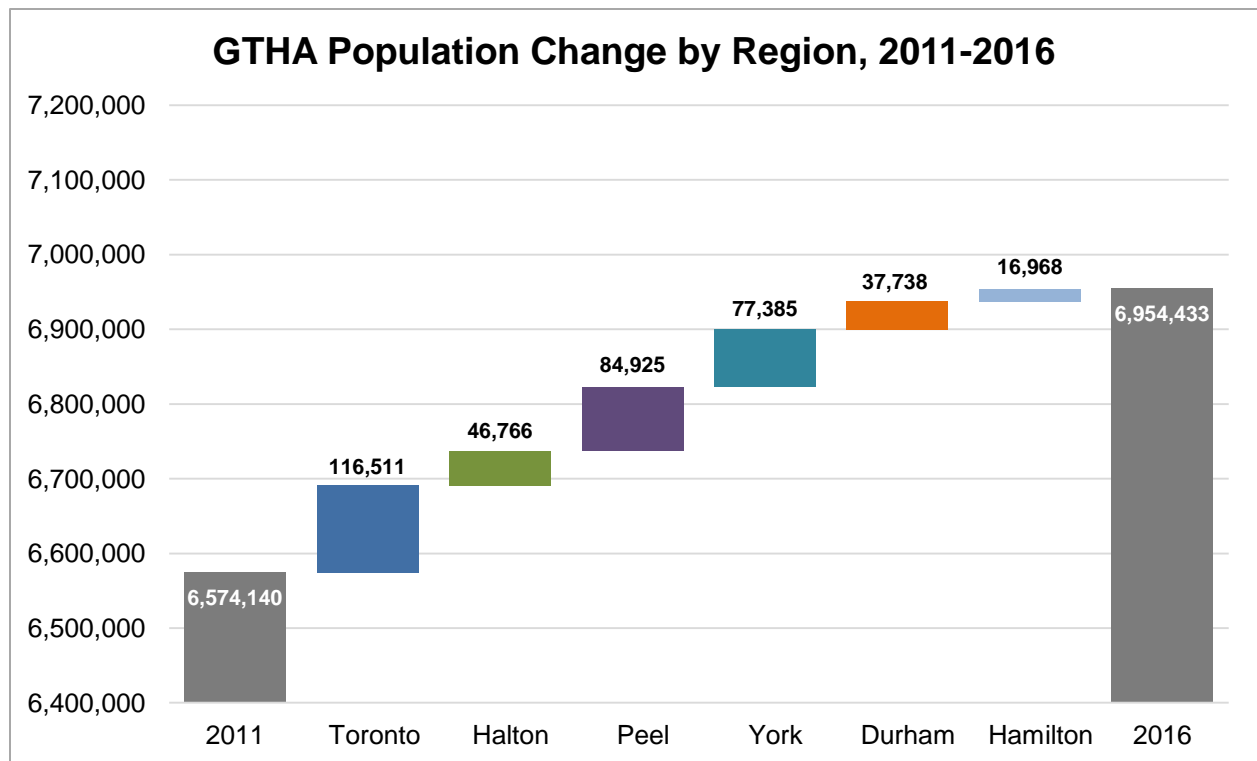




Population Growth Rates, 1996-2016, Greater Toronto and Hamilton Area

	Percent Change				Annualized Compound Growth Rate	
	1996-2001	2001-2006	2006-2011	2011-2016	2011-2016	2006-2016
GTHA	9.3	8.8	8.5	5.8	1.13	1.39
Toronto	4.0	0.9	4.5	4.5	0.88	0.88
Rest of the GTHA	14.0	15.1	11.3	6.7	1.30	1.73
Durham	10.5	10.7	8.4	6.2	1.21	1.41
York	23.1	22.4	15.7	7.5	1.46	2.20
Peel	16.0	17.2	11.9	6.5	1.28	1.77
Halton	10.4	17.1	14.2	9.3	1.80	2.24
Hamilton	4.8	2.9	3.1	3.3	0.64	0.62

Source: Statistics Canada, Censuses, 1996-2016



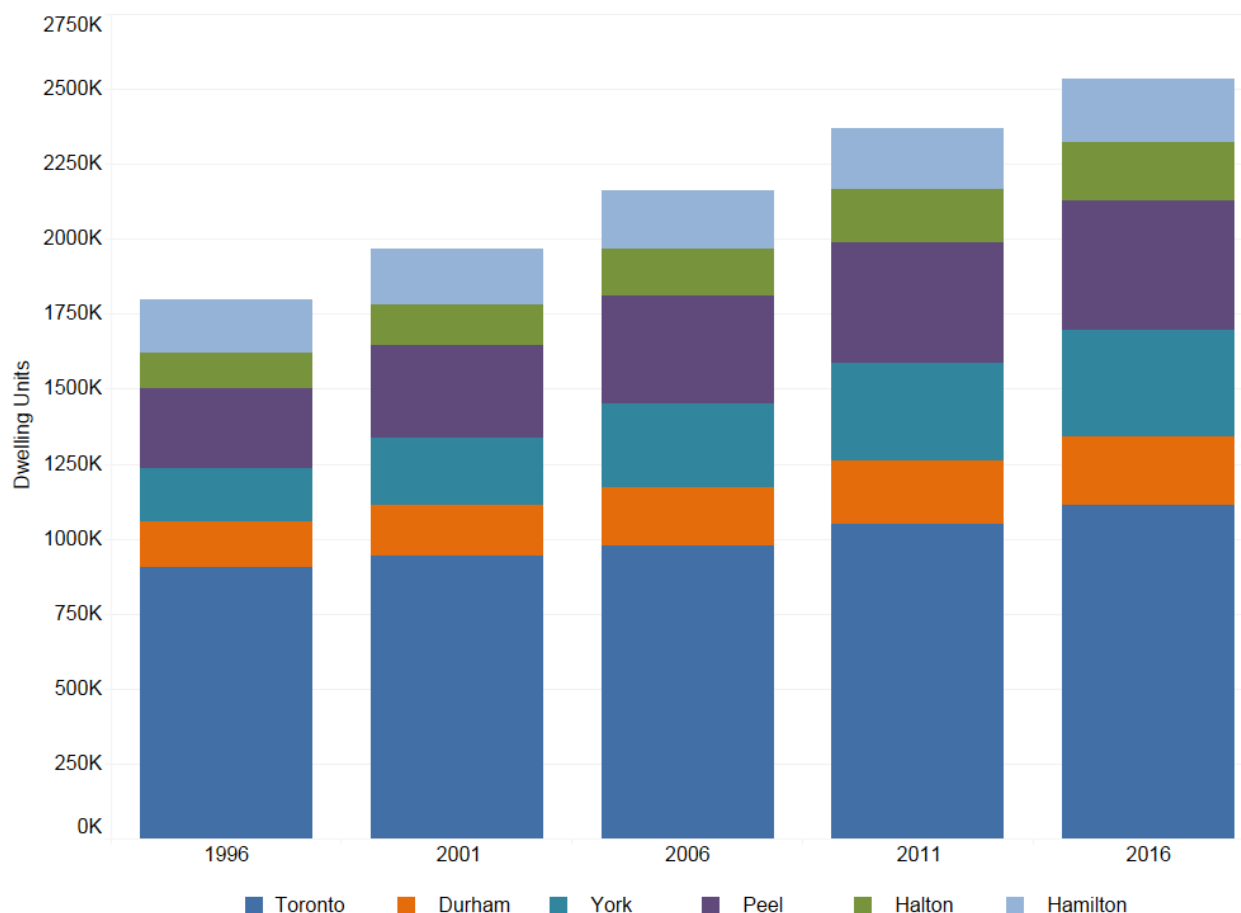
Dwelling Units, 1996-2016, Greater Toronto and Hamilton Area

	1996	2001	2006	2011	2016	Change			
						1996-2001	2001-2006	2006-2011	2011-2016
GTHA	1,796,620	1,967,360	2,160,109	2,370,924	2,532,672	170,740	192,749	210,815	161,748
Toronto	903,580	943,080	979,330	1,047,877	1,112,929	39,500	36,250	68,547	65,052
Rest of the GTHA	893,040	1,024,280	1,180,779	1,323,047	1,419,743	131,240	156,499	142,268	96,696
Durham	154,100	171,715	194,672	213,746	227,906	17,615	22,957	19,074	14,160
York	177,575	223,170	275,673	323,543	357,084	45,595	52,503	47,870	33,541
Peel	265,935	308,845	359,042	402,939	430,180	42,910	50,197	43,897	27,241
Halton	118,155	133,665	156,947	179,013	192,977	15,510	23,282	22,066	13,964
Hamilton	177,275	186,885	194,445	203,806	211,596	9,610	7,560	9,361	7,790
Toronto % of GTHA	50.3	47.9	45.3	44.2	43.9	23.1	18.8	32.5	40.2

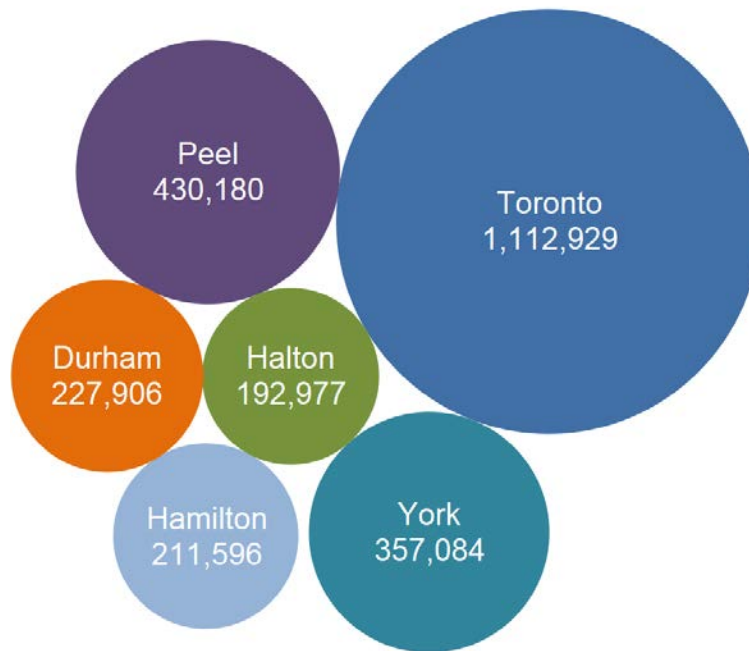
Source: Statistics Canada, 1996-2016 Censuses

Dwelling unit counts refer to units occupied by usual residents.

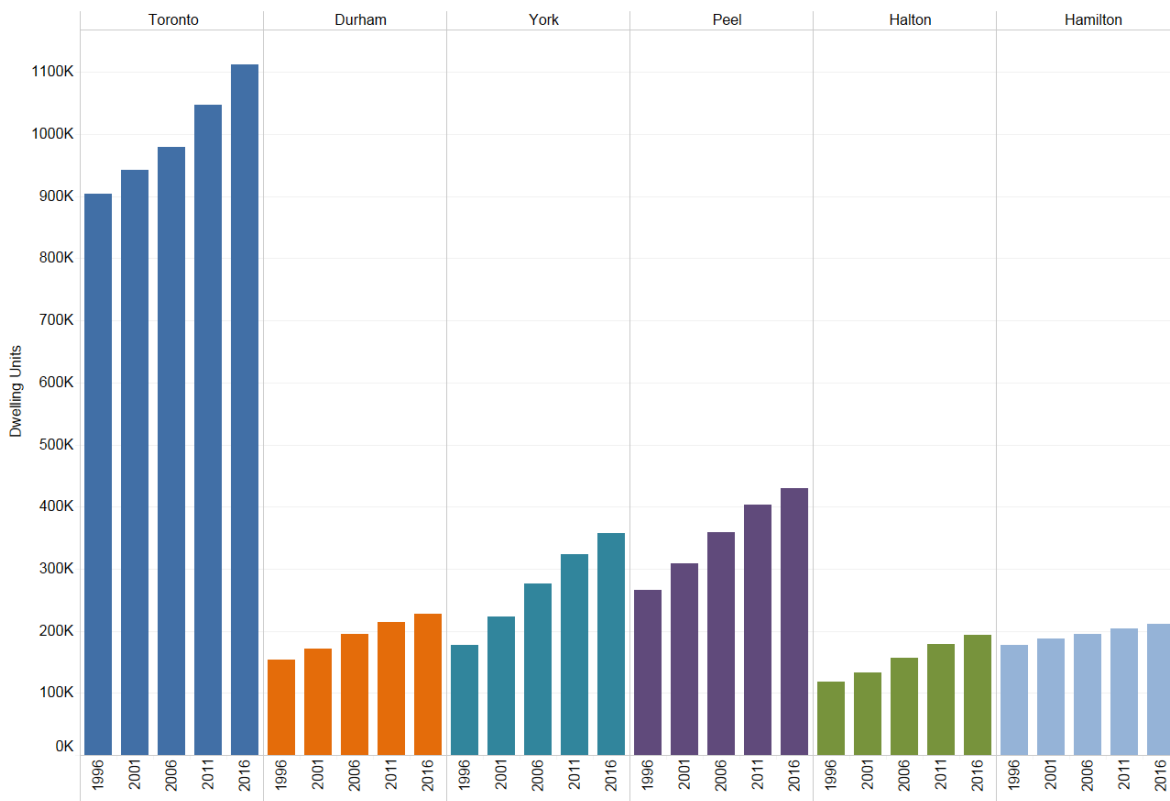
Dwelling Units, 1996-2016, Greater Toronto and Hamilton Area



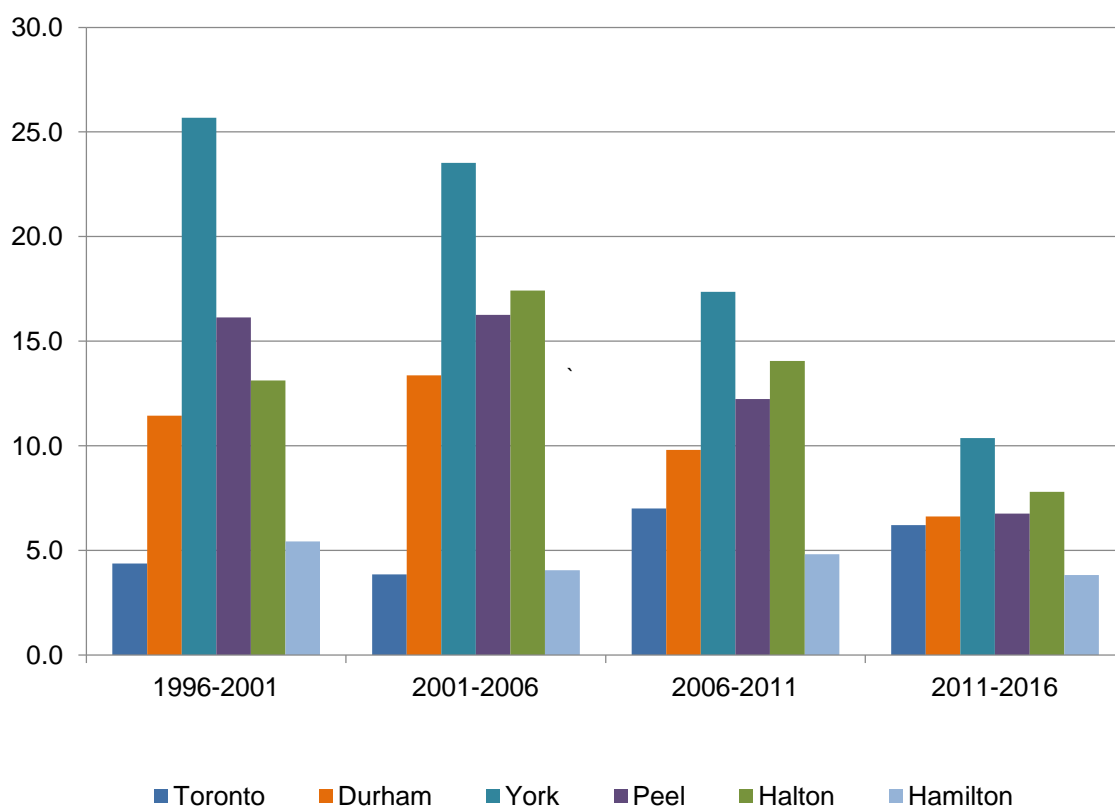
2016 Dwelling Units by Municipality, Greater Toronto and Hamilton Area



Dwelling Unit Change by Municipality, 1996-2016, Greater Toronto and Hamilton Area



Percent Change in Occupied Dwelling Units



Percent Change in Dwelling Units, 1996-2016, Greater Toronto and Hamilton Area

	1996-2001	2001-2006	2006-2011	2011-2016
GTHA	9.5	9.8	9.8	6.8
Toronto	4.4	3.8	7.0	6.2
Rest of the GTHA	14.7	15.3	12.0	7.3
Durham	11.4	13.4	9.8	6.6
York	25.7	23.5	17.4	10.4
Peel	16.1	16.3	12.2	6.8
Halton	13.1	17.4	14.1	7.8
Hamilton	5.4	4.0	4.8	3.8

Source: Statistics Canada, 1996-2016 Censuses

Dwelling unit counts refer to units occupied by usual residents.

Greater Toronto and Hamilton Area (GTHA) Population and Percent Change by Municipality, 1996-2016

Municipality	1996	2001	2006*	2011*	2016*	Percent Change				
						1996-2001	2001-2006	2006-2011	2011-2016	1996-2016
Toronto	2,385,421	2,481,494	2,503,281	2,615,060	2,731,571	4.0	0.9	4.5	4.5	14.5
Durham	458,616	506,901	561,186	608,031	645,731	10.5	10.7	8.3	6.2	40.8
Ajax	64,430	73,753	90,167	109,600	119,677	14.5	22.3	21.6	9.2	85.7
Brock	11,705	12,110	11,979	11,341	11,642	3.5	-1.1	-5.3	2.7	-0.5
Clarington	60,615	69,834	77,820	84,548	92,013	15.2	11.4	8.6	8.8	51.8
Oshawa	134,364	139,051	141,590	149,607	159,458	3.5	1.8	5.7	6.6	18.7
Pickering	78,989	87,139	87,838	88,721	91,771	10.3	0.8	1.0	3.4	16.2
Scugog	18,837	20,224	21,439	21,569	21,617	7.4	6.0	0.6	0.2	14.8
Uxbridge	15,882	17,377	19,169	20,623	21,176	9.4	10.3	7.6	2.7	33.3
Whitby	73,794	87,413	111,184	122,022	128,377	18.5	27.2	9.7	5.2	74.0
York	592,445	729,254	892,359	1,032,249	1,109,648	23.1	22.4	15.7	7.5	87.3
Aurora	34,857	40,167	47,629	53,203	55,445	15.2	18.6	11.7	4.2	59.1
East Gwillimbury	19,770	20,555	21,069	22,473	23,991	4.0	2.5	6.7	6.8	21.4
Georgina	34,978	39,536	42,346	43,517	45,418	13.0	7.1	2.8	4.4	29.8
King	18,223	18,533	19,487	19,899	24,512	1.7	5.1	2.1	23.2	34.5
Markham	173,383	208,615	261,573	301,709	328,966	20.3	25.4	15.3	9.0	89.7
Newmarket	57,125	65,788	74,295	79,978	84,224	15.2	12.9	7.6	5.3	47.4
Richmond Hill	101,725	132,030	162,704	185,541	195,022	29.8	23.2	14.0	5.1	91.7
Vaughan	132,549	182,022	238,866	288,301	306,233	37.3	31.2	20.7	6.2	131.0
Whitchurch-Stouffville	19,835	22,008	24,390	37,628	45,837	11.0	10.8	54.3	21.8	131.1
Peel	852,526	988,948	1,159,405	1,296,814	1,381,739	16.0	17.2	11.9	6.5	62.1
Brampton	268,251	325,428	433,806	523,911	593,638	21.3	33.3	20.8	13.3	121.3
Caledon	39,893	50,595	57,050	59,460	66,502	26.8	12.8	4.2	11.8	66.7
Mississauga	544,382	612,925	668,549	713,443	721,599	12.6	9.1	6.7	1.1	32.6
Halton	339,875	375,229	439,256	501,669	548,435	10.4	17.1	14.2	9.3	61.4
Burlington	136,976	150,836	164,415	175,779	183,314	10.1	9.0	6.9	4.3	33.8
Halton Hills	42,390	48,184	55,289	59,008	61,161	13.7	14.7	6.7	3.6	44.3
Milton	32,104	31,471	53,939	84,362	110,128	-2.0	71.4	56.4	30.5	243.0
Oakville	128,405	144,738	165,613	182,520	193,832	12.7	14.4	10.2	6.2	51.0
Hamilton	467,799	490,268	504,559	519,949	536,917	4.8	2.9	3.1	3.3	14.8
GTHA	5,096,682	5,572,094	6,060,046	6,573,772	6,954,041	9.3	8.8	8.5	5.8	36.4

Notes:

The numbers in this table may differ slightly due to rounding.

For some municipalities large percentage increases are due to small population counts.

* 2016, 2011 and 2006 counts do not include First Nations Reserves:

Durham Region: Mississaugas of Scugog Island (Pop 2016 = 131, Pop 2011 = 93, Pop 2006 = 72)

York Region: Chippewas of Georgina Island First Nation (Pop 2016 = 261, Pop 2011 = 275, Pop 2006 = 353)

Source: Statistics Canada, Censuses 1996, 2001, 2006, 2011, 2016

Greater Toronto and Hamilton Area (GTHA) Occupied Private Dwellings and Percent Change by Municipality, 2006-2016

Municipality	2006*	2011*	2016*	Percent Change			Average Number of Persons in all Occupied Dwellings	
				2006-2011	2011-2016	2006-2016	2011	2016
Toronto	979,330	1,047,877	1,112,929	7.0	6.2	13.6	2.50	2.45
Durham	194,639	213,706	227,854	9.8	6.6	17.1	2.85	2.83
Ajax	28,616	35,038	37,549	22.4	7.2	31.2	3.13	3.19
Brock	4,422	4,336	4,543	-1.9	4.8	2.7	2.62	2.56
Clarington	26,865	29,880	32,838	11.2	9.9	22.2	2.83	2.80
Oshawa	54,923	58,797	62,595	7.1	6.5	14.0	2.54	2.55
Pickering	28,210	29,330	30,919	4.0	5.4	9.6	3.02	2.97
Scugog	7,705	7,959	8,218	3.3	3.3	6.7	2.71	2.63
Uxbridge	6,658	7,345	7,663	10.3	4.3	15.1	2.81	2.76
Whitby	37,240	41,021	43,529	10.2	6.1	16.9	2.97	2.95
York	275,544	323,429	356,966	17.4	10.4	29.5	3.19	3.11
Aurora	15,656	17,691	18,851	13.0	6.6	20.4	3.01	2.94
East Gwillimbury	6,887	7,540	8,077	9.5	7.1	17.3	2.98	2.97
Georgina	15,263	15,851	16,821	3.9	6.1	10.2	2.75	2.70
King	6,398	6,645	8,144	3.9	22.6	27.3	2.99	3.01
Markham	77,191	90,534	102,676	17.3	13.4	33.0	3.33	3.20
Newmarket	25,087	27,409	28,673	9.3	4.6	14.3	2.92	2.94
Richmond Hill	51,000	58,651	64,116	15.0	9.3	25.7	3.16	3.04
Vaughan	69,536	86,063	94,253	23.8	9.5	35.5	3.35	3.25
Whitchurch-Stouffville	8,526	13,045	15,355	53.0	17.7	80.1	2.88	2.99
Peel	359,042	402,939	430,180	12.2	6.8	19.8	3.22	3.21
Brampton	125,934	149,271	168,011	18.5	12.6	33.4	3.51	3.53
Caledon	18,214	19,086	21,256	4.8	11.4	16.7	3.12	3.13
Mississauga	214,894	234,582	240,913	9.2	2.7	12.1	3.04	3.00
Halton	156,947	179,013	192,977	14.1	7.8	23.0	2.80	2.84
Burlington	63,159	68,779	71,373	8.9	3.8	13.0	2.56	2.57
Halton Hills	18,812	20,261	21,078	7.7	4.0	12.0	2.91	2.90
Milton	18,448	27,561	34,257	49.4	24.3	85.7	3.06	3.21
Oakville	56,528	62,412	66,269	10.4	6.2	17.2	2.92	2.92
Hamilton	194,445	203,806	211,596	4.8	3.8	8.8	2.55	2.54
GTHA	2,159,947	2,370,770	2,532,502	9.8	6.8	17.2	2.77	2.75

Notes:

Dwelling unit counts refer to units occupied by usual residents.

The numbers in this table may differ slightly due to rounding.

For some municipalities, large percentage increases are due to small dwelling counts.

* 2016, 2011 and 2006 counts do not include First Nations Reserves:

Durham Region: Mississaugas of Scugog Island: Dwellings Occupied by Usual Residents 2016 = 52, 2011 = 40, 2006 = 33
York Region: Chippewas of Georgina Island First Nation: Dwellings Occupied by Usual Residents 2016 = 118, 2011 = 114, 2006 = 129

Source: Statistics Canada, Censuses 2006, 2011, 2016

City of Toronto Neighbourhoods
Total Population and Population Change, 2011-2016
Top 10 and Bottom 10 by Percent Change

Neighbourhood	Number	Population		Change 2011-2016	
		2011	2016	Absolute	Percent
Waterfront Communities-The Island	77	43,361	65,913	22,552	52.0%
Niagara	82	21,274	31,180	9,906	46.6%
Henry Farm	53	11,333	15,723	4,390	38.7%
Bay Street Corridor	76	19,348	25,797	6,449	33.3%
Little Portugal	84	12,050	15,559	3,509	29.1%
Mimico (includes Humber Bay Shores)	17	26,541	33,964	7,423	28.0%
Moss Park	73	16,306	20,506	4,200	25.8%
Pelmo Park-Humberlea	23	8,710	10,722	2,012	23.1%
Bayview Village	52	17,671	21,396	3,725	21.1%
Islington-City Centre West	14	38,084	43,965	5,881	15.4%
West Humber-Clairville	1	34,100	33,312	-788	-2.3%
Bayview Woods-Steeles	49	13,530	13,154	-376	-2.8%
Glenfield-Jane Heights	25	31,390	30,491	-899	-2.9%
Malvern	132	45,086	43,794	-1,292	-2.9%
Kensington-Chinatown	78	18,495	17,945	-550	-3.0%
Cabbagetown-South St. James Town	71	12,053	11,669	-384	-3.2%
Agincourt North	129	30,279	29,113	-1,166	-3.9%
Hillcrest Village	48	17,656	16,934	-722	-4.1%
Highland Creek	134	13,097	12,494	-603	-4.6%
Weston-Pelham Park	91	12,010	11,098	-912	-7.6%

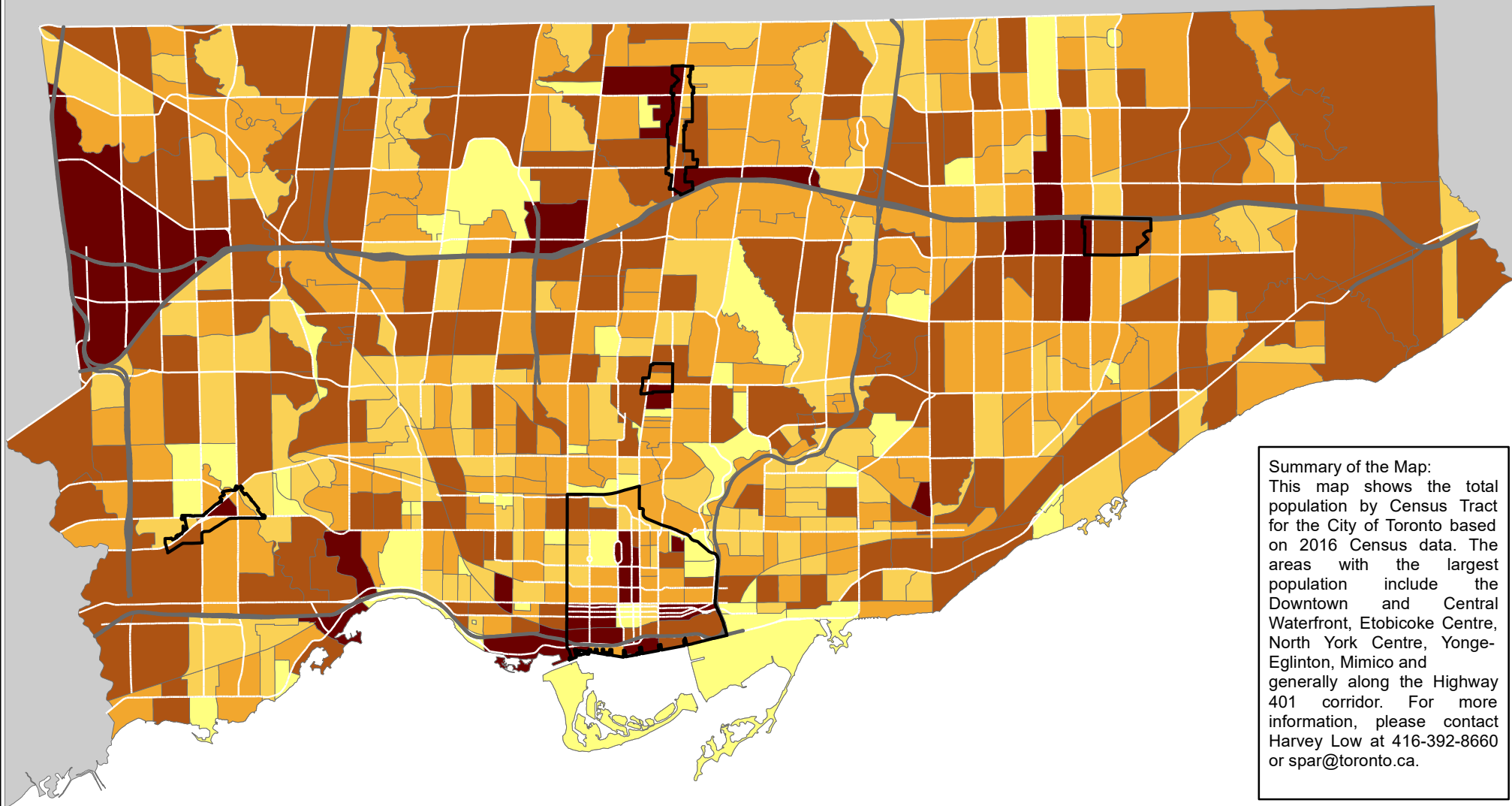
Notes:

Neighbourhood level data in this backgrounder is compiled from Census Tract-level totals. Final neighbourhood population totals may be slightly different. This data will be available for all 140 neighbourhoods on the City of Toronto's Wellbeing mapping application and the City's Open Data site.

www.toronto.ca/wellbeing

www.toronto.ca/open

Map 1: Total Population by Census Tract, 2016



Summary of the Map:
This map shows the total population by Census Tract for the City of Toronto based on 2016 Census data. The areas with the largest population include the Downtown and Central Waterfront, Etobicoke Centre, North York Centre, Yonge-Eglinton, Mimico and generally along the Highway 401 corridor. For more information, please contact Harvey Low at 416-392-8660 or spar@toronto.ca.

Legend

Total Population

- 0 - 2,500
- 2,501 - 4,000
- 4,001 - 5,500
- 5,501 - 8,000
- 8,001 - 17,550

- Downtown/Centres
- Expressway
- Major Arterial



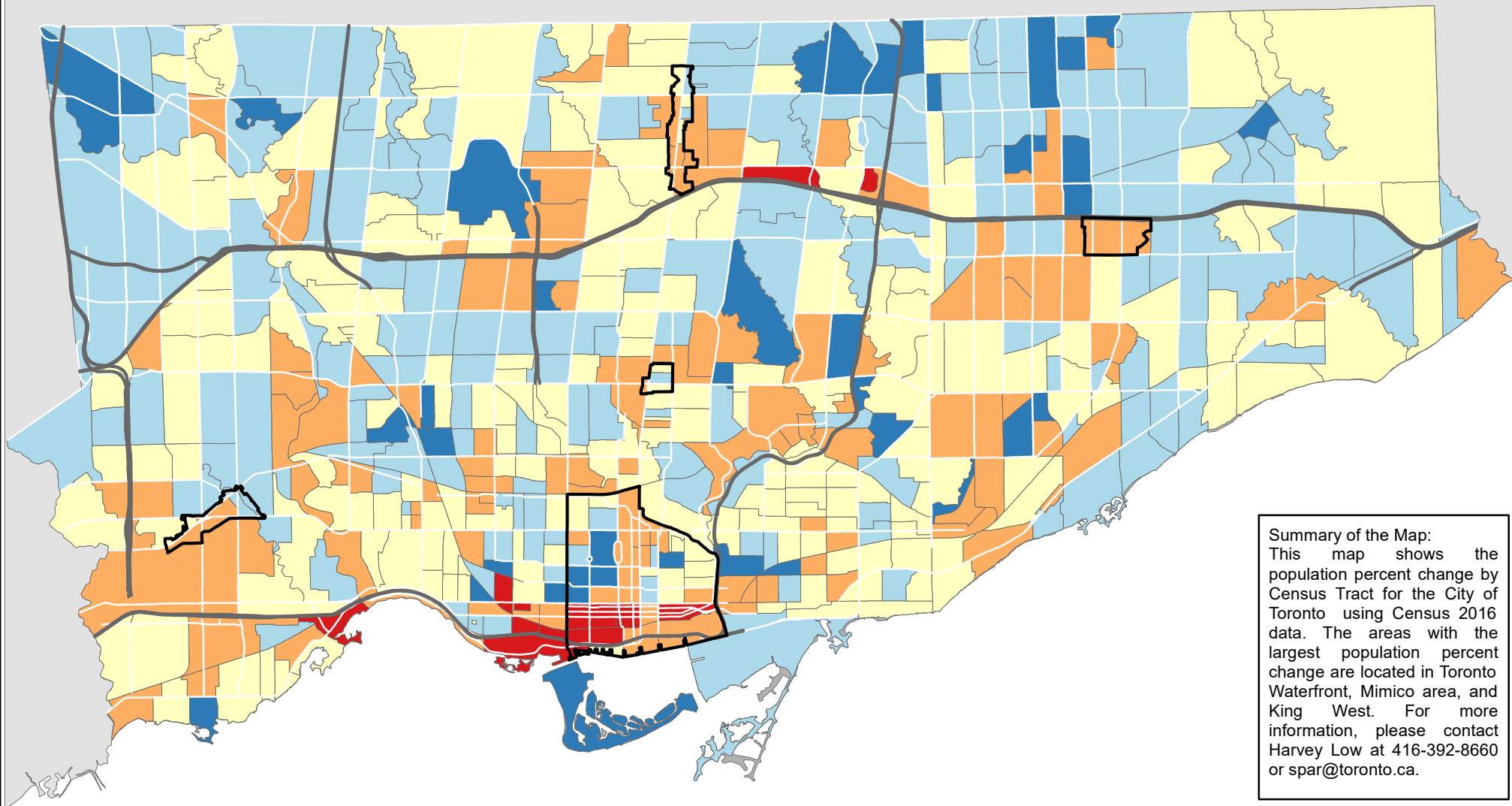
Scale: 0 2 4 Km

Source: City of Toronto;
Statistics Canada 2016 Census.

Copyright © 2017 City of Toronto. All Rights Reserved.
Published: February 2017.

Prepared by: Social Research and Analysis Unit.
Contact: spar@toronto.ca.

Map 2a: Population Percent Change for the City of Toronto by Census Tract, 2006 to 2016



Summary of the Map:
This map shows the population percent change by Census Tract for the City of Toronto using Census 2016 data. The areas with the largest population percent change are located in Toronto Waterfront, Mimico area, and King West. For more information, please contact Harvey Low at 416-392-8660 or spar@toronto.ca.

Legend

Population Percent Change

- 51.1% to -5.1%
- 5.0% to -0.1%
- 0.0% to +4.9%
- +5.0% to +49.9%
- +50.0% to +175.0%

- Downtown/Centres
- Non-residential area
- Expressway
- Major Arterial



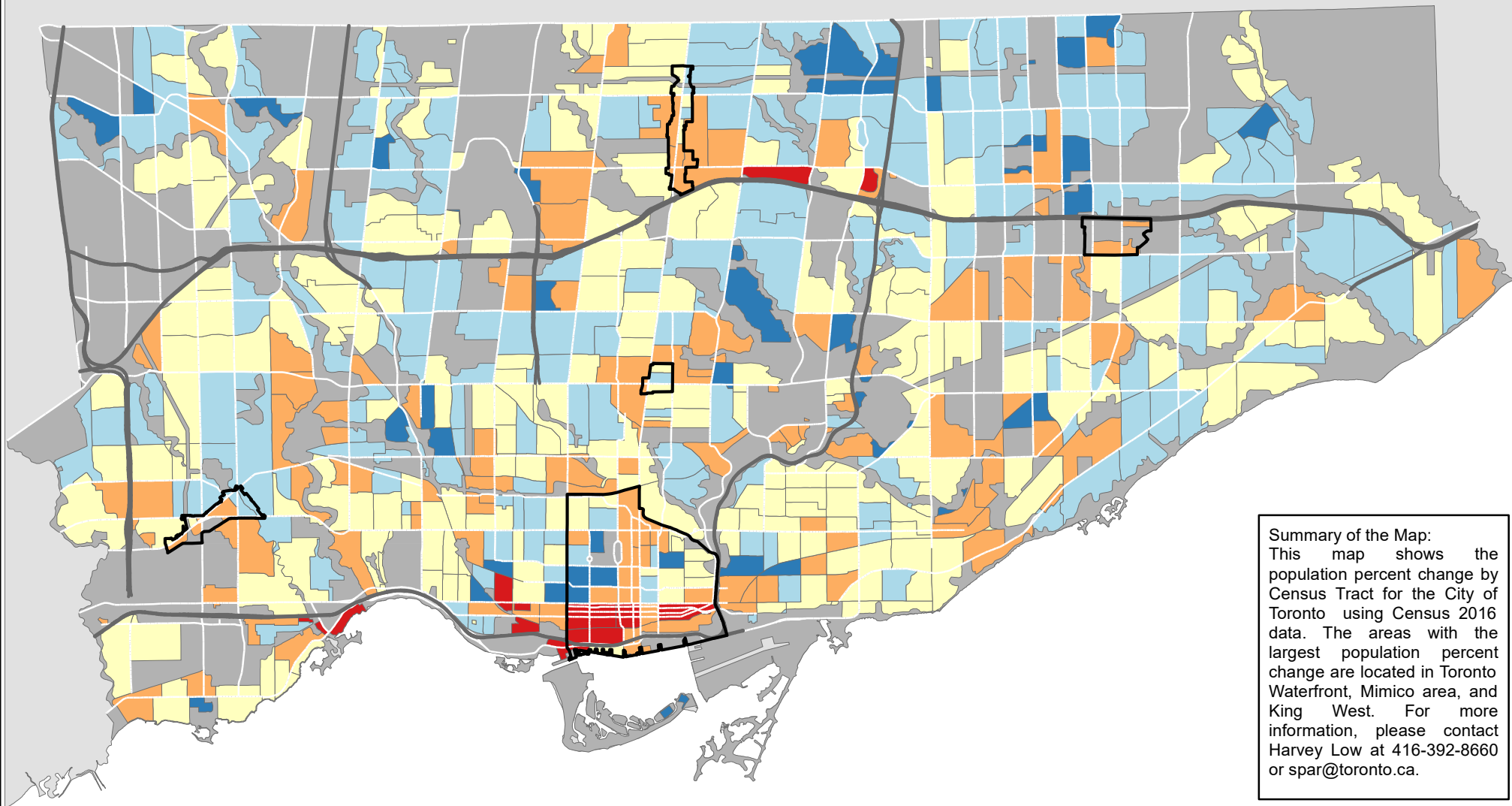
Scale: 0 2 4 Km

Source: City of Toronto;
Statistics Canada 2016 Census.

Copyright © 2017 City of Toronto. All Rights Reserved.
Published: February 2017.

Prepared by: Social Research and Analysis Unit.
Contact: spar@toronto.ca.

Map 2b: Population Percent Change for the City of Toronto by Census Tract, 2006 to 2016, Residential Areas



Summary of the Map:
This map shows the population percent change by Census Tract for the City of Toronto using Census 2016 data. The areas with the largest population percent change are located in Toronto Waterfront, Mimico area, and King West. For more information, please contact Harvey Low at 416-392-8660 or spar@toronto.ca.

Legend

Population Percent Change

- 51.1% to -5.0%
- 4.9% to -0.1%
- 0.0% to +4.9%
- +5.0% to +49.9%
- +50.0% to +175.0%

- Downtown/Centres
- Non-residential area
- Expressway
- Major Arterial



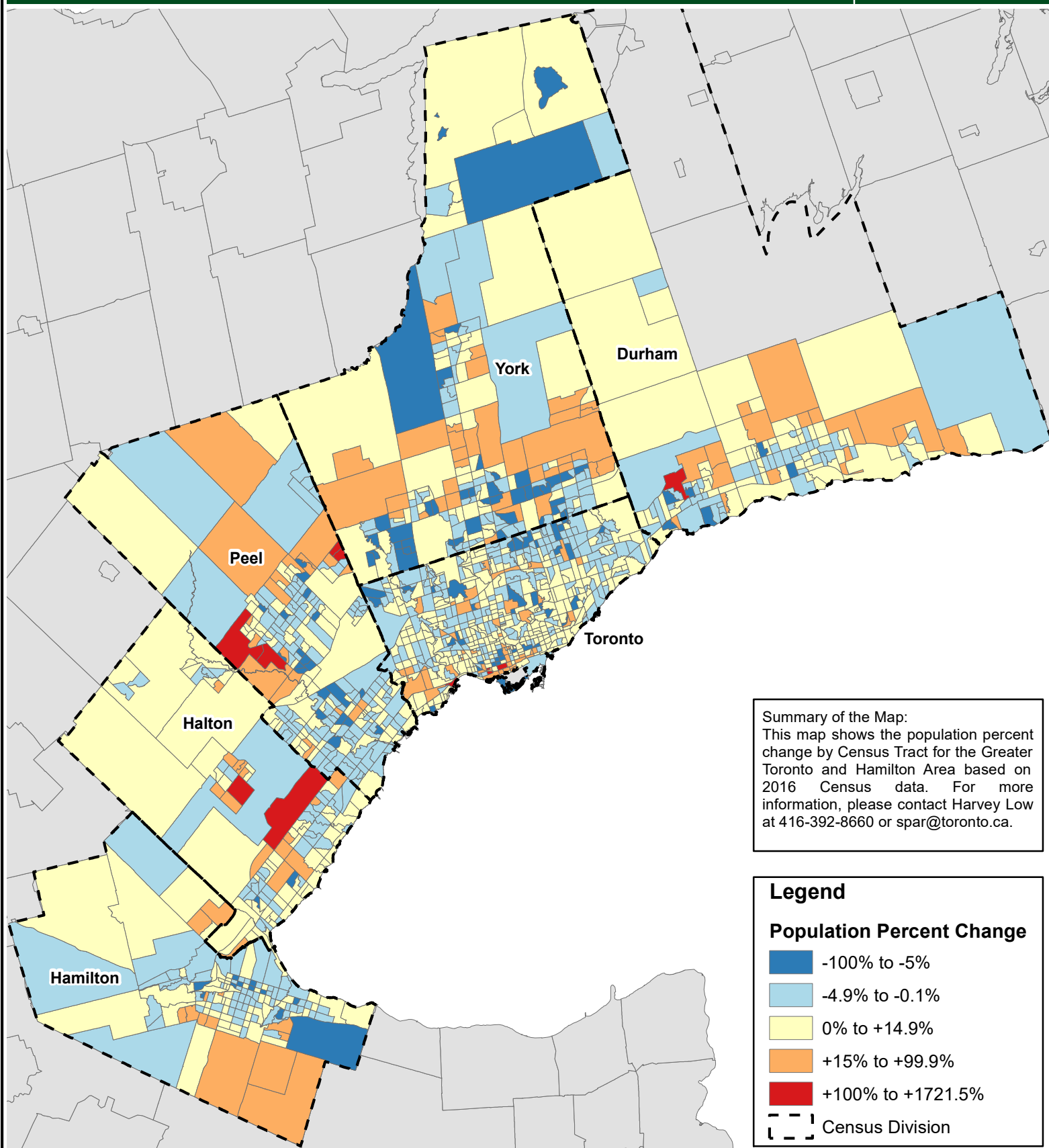
Scale: 0 2 4 Km

Source: City of Toronto;
Statistics Canada 2016 Census.

Copyright © 2017 City of Toronto. All Rights Reserved.
Published: February 2017.

Prepared by: Social Research and Analysis Unit.
Contact: spar@toronto.ca.

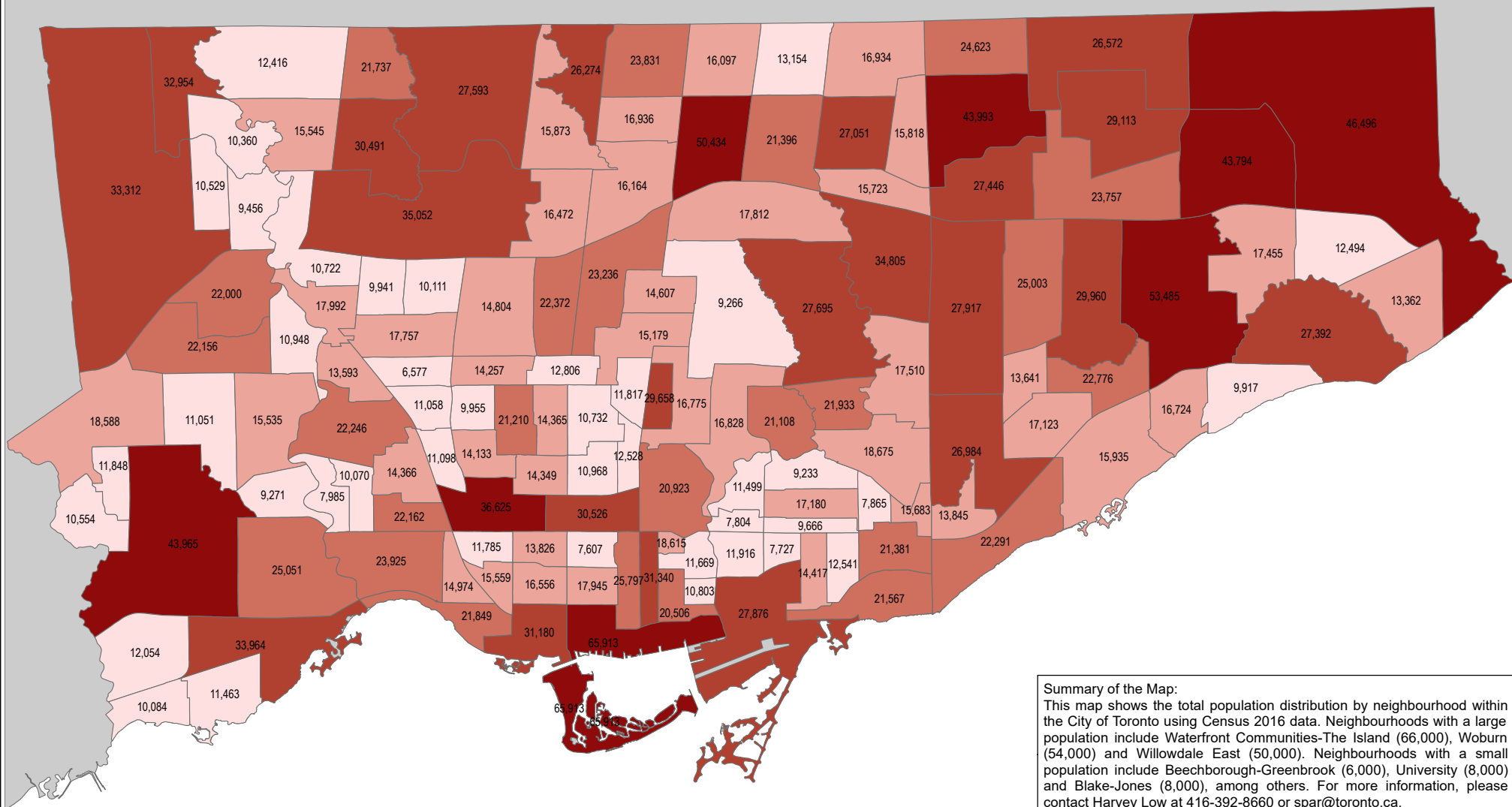
Map 3: Population Percent Change for Greater Toronto and Hamilton Area by Census Tract, 2006 to 2016



Scale: 0 10 20 Km

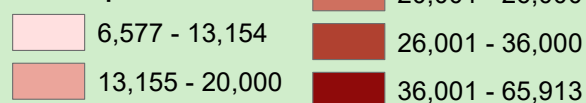
Source: City of Toronto;
Statistics Canada 2016 Census. Copyright© 2016 City of Toronto. All Rights Reserved.
Published: February 2017.
Prepared by: Social Research and Analysis Unit.
Contact: spar@toronto.ca

Map 4: Toronto Population by Neighbourhoods, 2016



Legend

Total Population 2016



Mean = 19,511



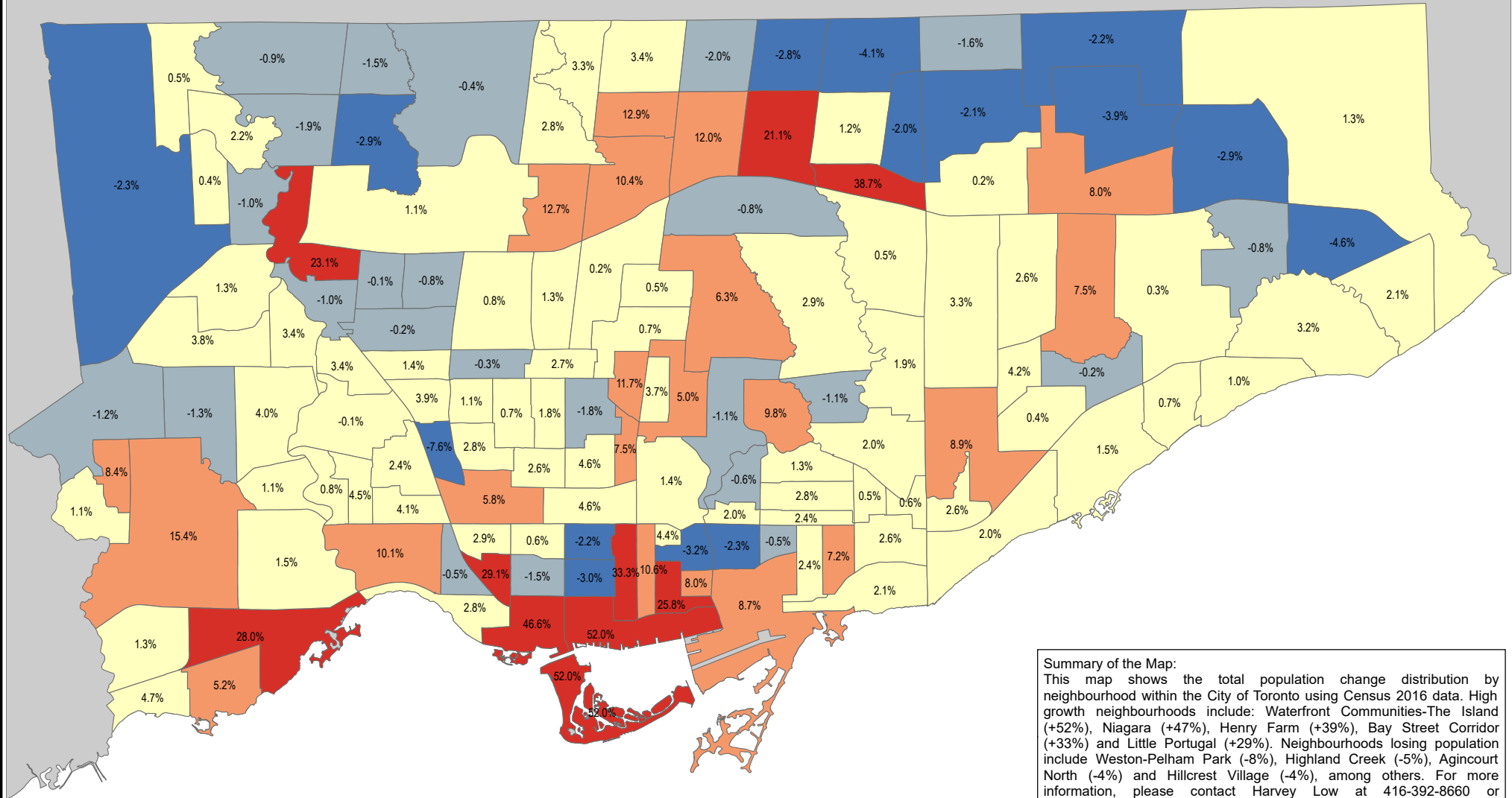
Scale: 0 2 4 Km

Source: City of Toronto;
Statistics Canada 2016 Census.

Copyright © 2017 City of Toronto. All Rights Reserved.
Published: February 2017.

Prepared by: Social Policy Analysis & Research Unit.
Contact: spar@toronto.ca.

Map 5: Toronto Population Change by Neighbourhoods, 2011 to 2016



Legend

Population Change 2011 to 2016

	-7.6% to -2%		0% to +4.9%
	-1.9% to -0.1%		+5% to +19.9%
	+20% to +52%		



Scale: 0 2 4 Km

Source: City of Toronto;
Statistics Canada 2016 Census.

Copyright © 2017 City of Toronto. All Rights Reserved.
Published: February 2017.

Prepared by: Social Policy Analysis & Research Unit.
Contact: spar@toronto.ca.