

May 29, 2012

2011 Census: Age and Sex Counts

The 2011 Census Day was May 9, 2011. Today, Statistics Canada released its second set of data from this Census, on age and sex.

Key Points:

- In 2011 Toronto's population stood at 2,615,060, a 4.5% increase over the 2006 Census. This figure, as well as the age and sex figures in this Backgrounder, are not adjusted for undercoverage which is discussed below in the Frequently Asked Questions.
- Toronto's population is 48.0% male and 52.0% female (1,255,585 men and 1,359,475 women).
- There are 92 men for every 100 women. This is down from 93 men in 2006.
- Women continue to outlive men, but the difference in longevity is decreasing. Since 2006, women age 65+ have decreased in their share of the population 65+, from 57.7% to 57.3%. Women age 75+ have decreased in their share of the population 75+, from 60.6% to 59.9%.
- The ratio of males under twenty (10.8% of the population) to females under twenty (10.3% of the population) remains stable.

Age

- In 2011, Toronto's median age was 39.2 years, slightly higher than the 2006 median age of 38.4, but 1.4 years below the national median of 40.6 years. (Median age is the point in the age distribution where exactly one-half of the population is older, and the other half is younger.)
- The age structure of Toronto's population is continuing to shift. In the five years since the 2006 Census, Toronto has continued to gain older adults; the share of adults 75+ has increased from 7.0% to 7.2%. At the same time, the number of children 0-4 has also increased, by 5,530 or 4.1%.
- The two fastest growing age groups between 2006 and 2011 were aged 60-64 years and 85+ years. Those aged 60-64 grew by 28.8% (from 109,465 to 140,965) while the 85+ grew by 27.5% (from 43,100 to 54,965).
- Despite the fact that the population grew between 2006 and 2011, those aged 5-14 and 35-44 declined.

- The first wave of Baby Boomers (the population born between 1946 and 1961) turned 65 in 2011 and represent 18.9% of Toronto's population, down from 20.4% in 2006. The cohort decreased by 15,750 in the past five years.
- Seniors (65 years of age and older) grew by 57,595 persons, 13.4% to 14.4% of Toronto's total population between 1996 and 2011.
- Did the population of seniors grow as projected? According to projections prepared by City Planning, between 1996 and 2011, the number of seniors was expected to grow by 39,315 persons or by 12.3%. Census data show that the population change among Toronto seniors 65+, is 18.0% and above our estimates. The senior cohort is expected to increase strongly in the coming years. Between 2011 and 2031, our projections indicate that the senior population will increase by one-third.
- As a percentage of the total population:
 - Pre-school children (0-4 years) remained at 5.4% between 2006 and 2011;
 - School age children (5-14 years) decreased from 11.0% in 2006 to 10% in 2011;
 - Youth (15-24 years) increased slightly from 12.7% in 2006 to 12.8% in 2011;
 - The young working-age population (25-44 years) fell from 32.0% in 2006 to 30.6% in 2011;
 - The older working-age population (45-64 years) increased from 24.8% in 2006 to 26.9% in 2011;
 - People of retirement age (65 years and up) slightly increased from 14.1% in 2006 to 14.4% in 2011.

Toronto in the Greater Toronto Area

- In 2011, Toronto accounted for 43% of the GTA population, a decrease from 45% in 2006. Toronto has 38% of all GTA children 0-14, 41% of GTA youth 15-24, 44% of GTA working age population 25-64 and 49% of GTA seniors 65+.
- Toronto has a higher proportion of seniors 65+ (14.4%) than the GTA Regions (11.5%), and a lower proportion of younger children 0-14 (15.3%) than the GTA Regions (19.1%). In 2011, the City was home to 400,860 children, while 658,540 resided in the rest of the GTA.
- Population aged 45-64 years account for 26.9% of the population in Toronto versus 28.1% in the rest of the GTA.

- Toronto has the highest proportion of the population in the 25-44 age group in the GTA at 30.6%, down from 32.0% in 2006. This demonstrates that Toronto continues to attract people throughout the GTA and the world by providing a range of employment, economic and educational opportunities. This age group also contributes significantly to subsequent population growth by bearing and raising children.
- 12.8% of Toronto's population is between 15-24 years – a lower share compared to the rest of the GTA at 14.0%.

Maps of Age Groups in Toronto

- Maps are attached which show the distribution of children, youth, working age adults and seniors across the city and the GTA.

FREQUENTLY ASKED QUESTIONS:

Why is meant by the term “undercoverage”?

Statistics Canada's numbers upon release and as reported above do not account for undercoverage. Although Statistics Canada makes a great effort to count every person, in each Census a notable number of people are left out for a variety of reasons. For example, people may be traveling, some dwellings are hard to find, and some people simply refuse to participate. Statistics Canada takes this into account and estimates an 'undercoverage' rate for the urban region (CMA) every Census, but not for the City. Based on the *Annual Demographic Estimates*, Cat. No. 91-214-XWE released March 7, 2012, the implied net undercoverage rate for the City of Toronto in 2011 is estimated to be 4.69%.

Net undercoverage also varies by age and sex and is highest for those between 15 and 44 years of age. In 2006, net undercoverage peaked at 9.91% for males and 6.08% for females 24-34 years of age, per the *2006 Census Technical Report: Coverage*, Cat. No. 92-567-X, released March 2010.

How do the changes in the 2011 Census methodology affect this release?

There have been changes in the way information has been collected for portions of the 2011 Census. This will impact the extent to which comparisons can be made with previous Census periods on some Census variables. The information previously collected by the long-form Census questionnaire was collected in 2011 as part of the new voluntary National Household Survey (NHS). The numbers in this particular release are from questions that are part of both the 2006 and 2011 Censuses and can be compared.

Where are other data such as income, education, and ethnicity?

The City of Toronto will be preparing Backgrounders coinciding with each release of data from the 2011 Census and the National Household Survey.

The 2011 Census release schedule is as follows:

- Population and Dwellings – February 8, 2012 (Backgrounder: <http://www.toronto.ca/demographics/pdf/2011-census-backgrounder.pdf>)
- Families, Households and Marital Status – September 19, 2012
- Structural Type of Dwelling and Collectives – September 19, 2012
- Language – October 24, 2012

The results of the National Household Survey will be released in 2013:

- Immigration, Citizenship, Language, Ethnic Origin, Visible Minorities, Religion, Aboriginal Peoples – May 8, 2013
- Labour, Education, Place of Work, Commuting, Mobility, Migration, Language of Work – June 26, 2013
- Income, Earnings, Housing and Shelter Costs – August 14, 2013

When are the City's Ward Profiles and Neighbourhood Profiles being released?

The Ward Profiles are based on a series of custom tabulations from what are now the Census and the NHS. City Planning staff will update the Ward Profiles when they can obtain the necessary custom tabulations from Statistics Canada based on 2011 data from both Surveys, beginning in late 2013. The current Ward Profiles can be found at:

<http://app.toronto.ca/wards/jsp/wards.jsp>

The Neighbourhood Profiles will be released through the Social Development Finance & Administration Division a few weeks after each Census and NHS release. These profiles are released sooner than the Ward Profiles because the data are not based on custom tabulations.

The current Neighbourhood Profiles can be found at:

<http://www.toronto.ca/demographics/neighbourhoods.htm>

Prepared by:

- Children's Services, Service System Planning and Policy Development
- City Planning, Policy and Research Section
- Parks Forestry & Recreation, Policy & Strategic Planning
- Policy, Planning, Finance and Administration, Communications
- Social Development, Finance and Administration, Social Policy Analysis and Research
- Toronto Public Health, Performance & Standards, Surveillance and Epidemiology

Contacts:

Harvey Low, Social Development Finance & Administration

Tel. No. 416-392-8660, Fax No. 416-392-4976

Email: hlow@toronto.ca

Michael Wright, City Planning, Policy and Research

Tel. No. 416-392-7558, Fax No. 416-392-3821

Email: mwright@toronto.ca

Table 1 Population by Age and Sex, Toronto, 1991-2011

	1991			1996			2001			2006			2011		
	Total	Males	Females	Total	Males	Females	Total	Males	Females	Total	Males	Females	Total	Males	Females
0-4	137,680	67,000	70,680	156,285	80,350	75,935	143,510	73,450	70,060	134,980	69,095	65,885	140,510	72,085	68,425
5-9	122,360	59,470	62,890	138,055	70,940	67,115	149,635	77,080	72,555	133,595	68,655	64,940	128,060	65,400	62,660
10-14	117,080	56,795	60,285	131,135	67,410	63,725	140,675	72,460	68,215	141,045	72,755	68,290	132,295	67,765	64,525
15-19	132,050	64,285	67,765	133,720	68,720	65,000	143,275	73,515	69,760	146,205	74,975	71,230	150,045	76,845	73,200
20-24	186,980	95,270	91,710	162,855	79,090	83,765	165,140	80,760	84,380	172,450	84,465	87,985	183,470	90,730	92,735
25-29	243,120	120,935	122,185	211,725	102,150	109,575	196,470	94,180	102,290	190,255	90,355	99,900	211,855	101,290	110,565
30-34	219,285	109,710	109,575	234,615	116,975	117,640	216,550	105,550	111,000	195,670	94,030	101,640	201,165	95,735	105,435
35-39	184,650	94,775	89,875	209,515	103,090	106,425	226,040	113,140	112,900	203,020	99,440	103,580	190,405	91,290	99,120
40-44	167,610	86,725	80,885	179,930	86,040	93,890	203,820	99,940	103,880	212,595	105,745	106,850	197,405	95,550	101,850
45-49	130,620	67,805	62,815	164,195	78,100	86,095	178,360	85,220	93,140	193,985	94,525	99,460	207,625	101,820	105,810
50-54	116,015	60,815	55,200	125,555	59,585	65,970	159,110	75,620	83,490	168,440	80,170	88,270	191,295	92,850	98,440
55-59	114,500	59,100	55,400	110,775	51,725	59,050	117,975	55,795	62,180	148,120	70,215	77,905	162,535	76,955	85,585
60-64	112,730	58,870	53,860	107,205	50,760	56,445	103,105	47,580	55,525	109,465	51,385	58,080	140,965	66,220	74,745
65-69	101,685	56,110	45,575	102,145	47,170	54,975	96,435	44,635	51,800	93,830	42,515	51,315	102,450	47,275	55,175
70-74	72,020	40,870	31,150	88,265	38,065	50,200	88,745	39,645	49,100	85,165	38,300	46,865	86,190	38,055	48,130
75-79	55,170	33,155	22,015	58,340	23,900	34,440	72,980	29,990	42,990	74,900	32,210	42,690	74,210	32,455	41,755
80-84	35,245	22,795	12,450	39,675	14,640	25,035	43,420	16,850	26,570	56,450	22,070	34,380	59,630	24,515	35,115
85+	26,970	19,615	7,355	31,425	8,985	22,440	36,265	11,165	25,100	43,100	14,465	28,635	54,965	18,755	36,210
All Ages	2,275,770	1,174,100	1,101,670	2,385,415	1,147,695	1,237,720	2,481,510	1,196,575	1,284,935	2,503,270	1,205,370	1,297,900	2,615,060	1,255,585	1,359,475

Note: Table totals may vary slightly due to rounding.

Source: Statistics Canada, Censuses 1991 - 2011

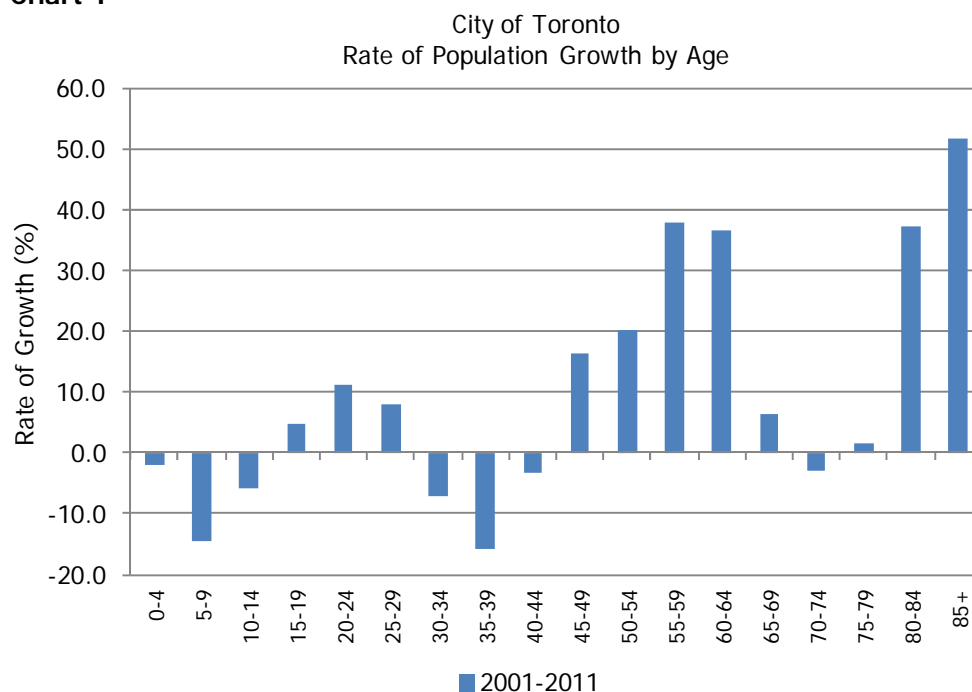
Note: Table totals may vary due to rounding.

Table 2
Growth Rates by Age, Toronto, 1991-2011

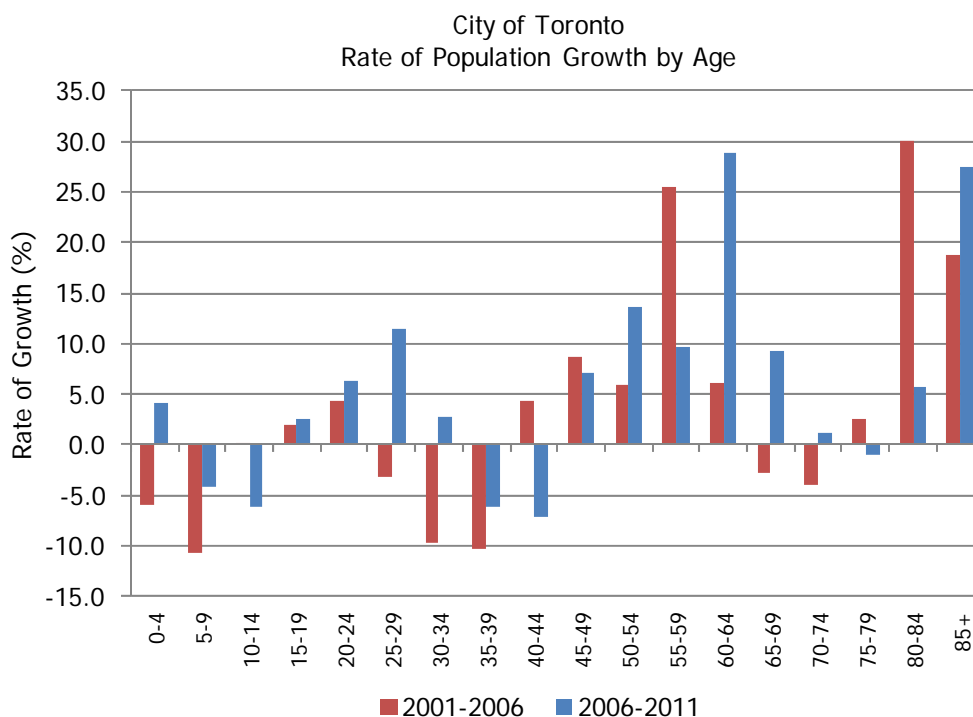
	1991-1996	1996-2001	2001-2006	2006-2011	2001-2011
0-4	13.5	-8.2	-5.9	4.1	-2.1
5-9	12.8	8.4	-10.7	-4.1	-14.4
10-14	12.0	7.3	0.3	-6.2	-6.0
15-19	1.3	7.1	2.0	2.6	4.7
20-24	-12.9	1.4	4.4	6.4	11.1
25-29	-12.9	-7.2	-3.2	11.4	7.8
30-34	7.0	-7.7	-9.6	2.8	-7.1
35-39	13.5	7.9	-10.2	-6.2	-15.8
40-44	7.4	13.3	4.3	-7.1	-3.1
45-49	25.7	8.6	8.8	7.0	16.4
50-54	8.2	26.7	5.9	13.6	20.2
55-59	-3.3	6.5	25.6	9.7	37.8
60-64	-4.9	-3.8	6.2	28.8	36.7
65-69	0.5	-5.6	-2.7	9.2	6.2
70-74	22.6	0.5	-4.0	1.2	-2.9
75-79	5.7	25.1	2.6	-0.9	1.7
80-84	12.6	9.4	30.0	5.6	37.3
85+	16.5	15.4	18.8	27.5	51.6
All Ages	4.8	4.0	0.9	4.5	5.4

Source: Statistics Canada, Censuses 1991 - 2011

Chart 1



Source: Statistics Canada, Censuses 2001 and 2011

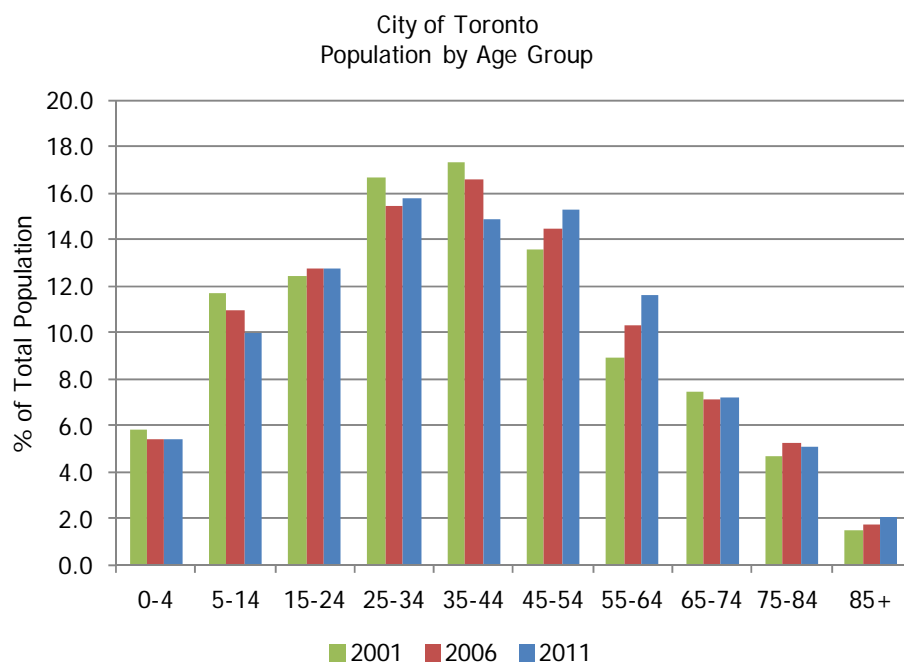
Chart 2


Source: Statistics Canada, Censuses 2001 - 2011

Table 4
Population by Age Group, Toronto, 2011

	2001		2006		2011	
	Number	Percent	Number	Percent	Number	Percent
0-4	143,510	5.8	134,980	5.4	140,510	5.4
5-14	290,310	11.7	274,640	11.0	260,350	10.0
15-24	308,415	12.4	318,655	12.7	333,515	12.8
25-34	413,020	16.6	385,925	15.4	413,015	15.8
35-44	429,860	17.3	415,615	16.6	387,805	14.8
45-54	337,470	13.6	362,425	14.5	398,915	15.3
55-64	221,080	8.9	257,585	10.3	303,495	11.6
65-74	185,180	7.5	178,995	7.2	188,630	7.2
75-84	116,400	4.7	131,350	5.2	133,845	5.1
85+	36,265	1.5	43,100	1.7	54,965	2.1
Total	2,481,510	100.0	2,503,270	100.0	2,615,045	100.0

Source: Statistics Canada, Censuses 2001 - 2011

Chart 3


Source: Statistics Canada, Censuses 2001 - 2011

Table 5
Population by Age and Sex, Toronto, 2011

	Total Population		Male		Female	
	Number	Percent	Number	Percent	Number	Percent
0-4	140,510	5.4	72,085	5.7	68,425	5.0
5-9	128,060	4.9	65,400	5.2	62,665	4.6
10-14	132,290	5.1	67,765	5.4	64,525	4.7
15-19	150,045	5.7	76,850	6.1	73,195	5.4
20-24	183,470	7.0	90,730	7.2	92,735	6.8
25-29	211,850	8.1	101,285	8.1	110,565	8.1
30-34	201,165	7.7	95,730	7.6	105,435	7.8
35-39	190,405	7.3	91,285	7.3	99,120	7.3
40-44	197,400	7.5	95,550	7.6	101,855	7.5
45-49	207,625	7.9	101,815	8.1	105,810	7.8
50-54	191,290	7.3	92,855	7.4	98,440	7.2
55-59	162,535	6.2	76,950	6.1	85,585	6.3
60-64	140,960	5.4	66,220	5.3	74,740	5.5
65-69	102,445	3.9	47,275	3.8	55,175	4.1
70-74	86,185	3.3	38,060	3.0	48,130	3.5
75+	188,810	7.2	75,725	6.0	113,080	8.3
Total	2,615,045	100.0	1,255,580	100.0	1,359,480	100.0

Source: Statistics Canada, Census 2011

Table 6
Population by Age Group, Greater Toronto Area / Hamilton, 2011

Number of People by Age Group

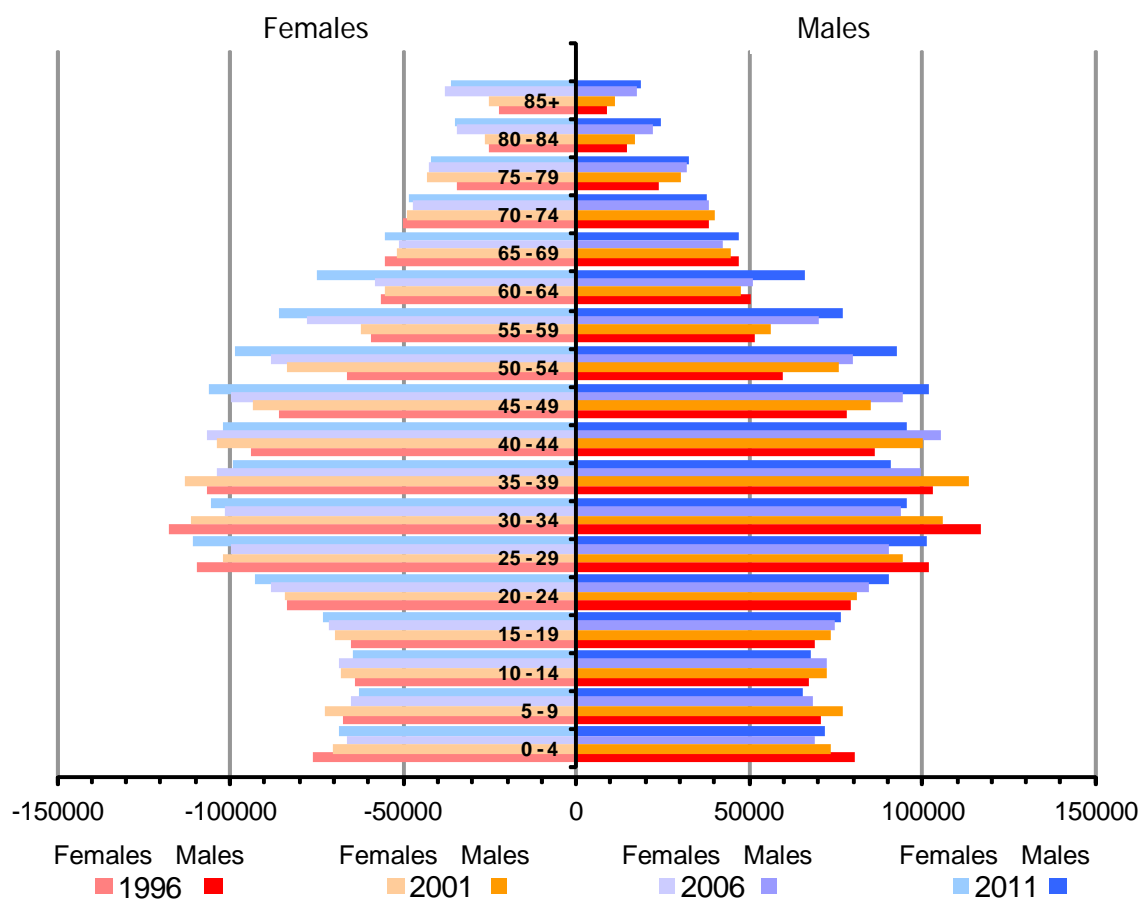
	GTA / H	Toronto	Rest of the GTA	Durham	Peel	York	Halton	Hamilton	GTA
0-14	1,145,120	400,860	658,540	113,030	254,915	192,170	98,425	85,720	1,059,400
15-24	886,735	333,515	480,645	86,840	187,055	143,720	63,030	72,575	814,160
25-44	1,868,080	800,820	936,185	156,265	366,975	276,795	136,150	131,075	1,737,005
45-64	1,818,110	702,410	966,700	178,390	352,020	298,895	137,395	149,000	1,669,110
65 +	856,085	377,440	397,070	73,610	135,860	120,935	66,665	81,575	774,510
Total	6,574,130	2,615,045	3,439,140	608,135	1,296,825	1,032,515	501,665	519,945	6,054,185
Median Age		39.2		39.2	36.9	39.3	39.3	40.9	
75+		188,810		33,345	55,165	52,405	30,770	40,190	360,495

Percent of People by Age Group

	GTA / H	Toronto	Rest of the GTA	Durham	Peel	York	Halton	Hamilton	GTA
0-14	17.4	15.3	19.1	18.6	19.7	18.6	19.6	16.5	17.5
15-24	13.5	12.8	14.0	14.3	14.4	13.9	12.6	14.0	13.4
25-44	28.4	30.6	27.2	25.7	28.3	26.8	27.1	25.2	28.7
45-64	27.7	26.9	28.1	29.3	27.1	28.9	27.4	28.7	27.6
65 +	13.0	14.4	11.5	12.1	10.5	11.7	13.3	15.7	12.8
Total	100.0	100.0	100.0	100.0	100.0	100.0	100.0	100.0	100.0

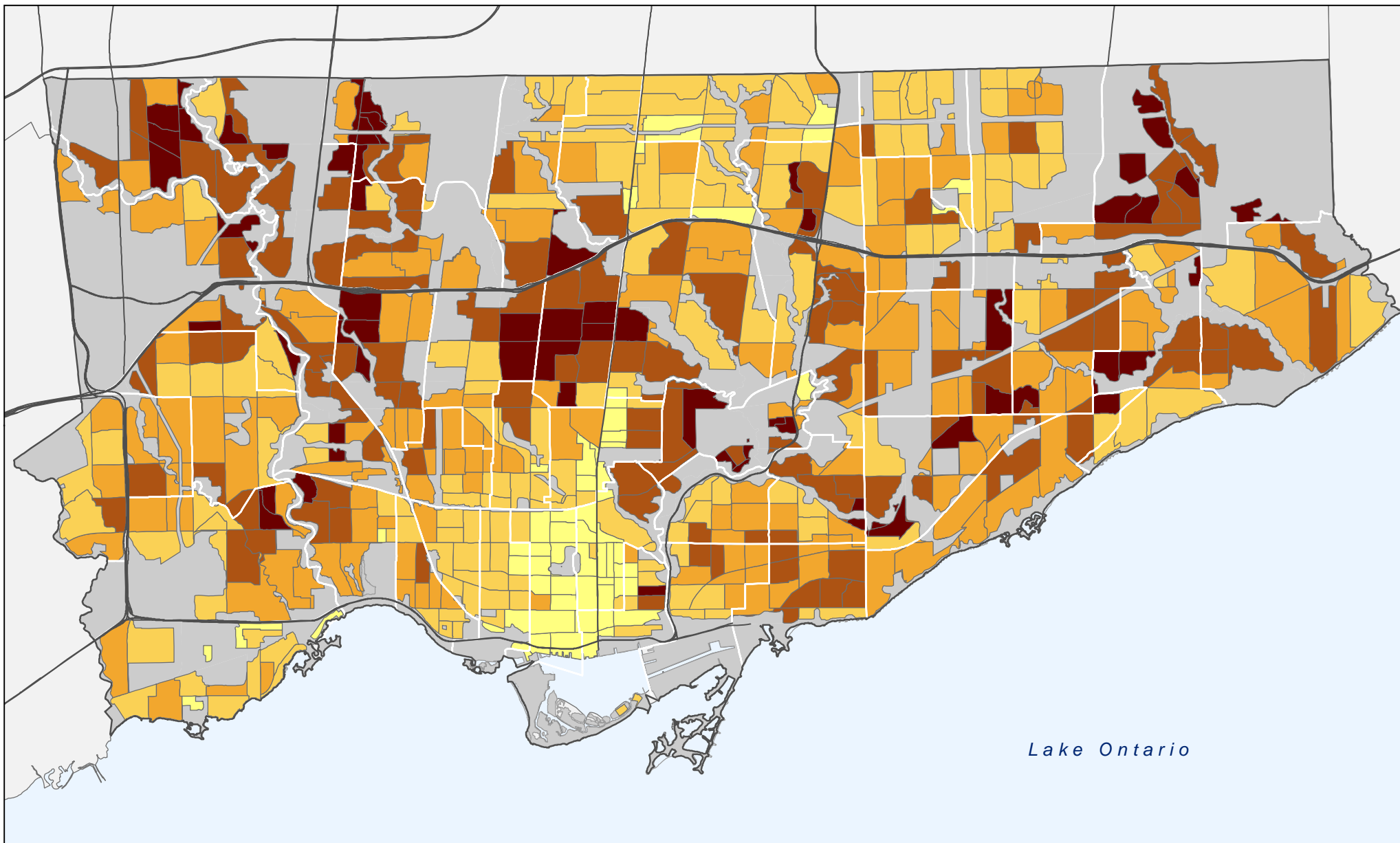
Source: Statistics Canada, Census 2011

Population Pyramid, Toronto, 1996-2011



Source: Statistics Canada, Censuses 1996 - 2011

City of Toronto Concentration of Children 0-14 years



Legend

% Children Population

0.0% - 9.0%

9.1% - 14.0%

14.1% - 17.0%

17.1% - 21.0%

21.1% - 34.0%

Expressways

Ward boundary

Non-residential area



0 1 2 3 4
Km



Source: Statistics Canada Census 2011; City of Toronto.

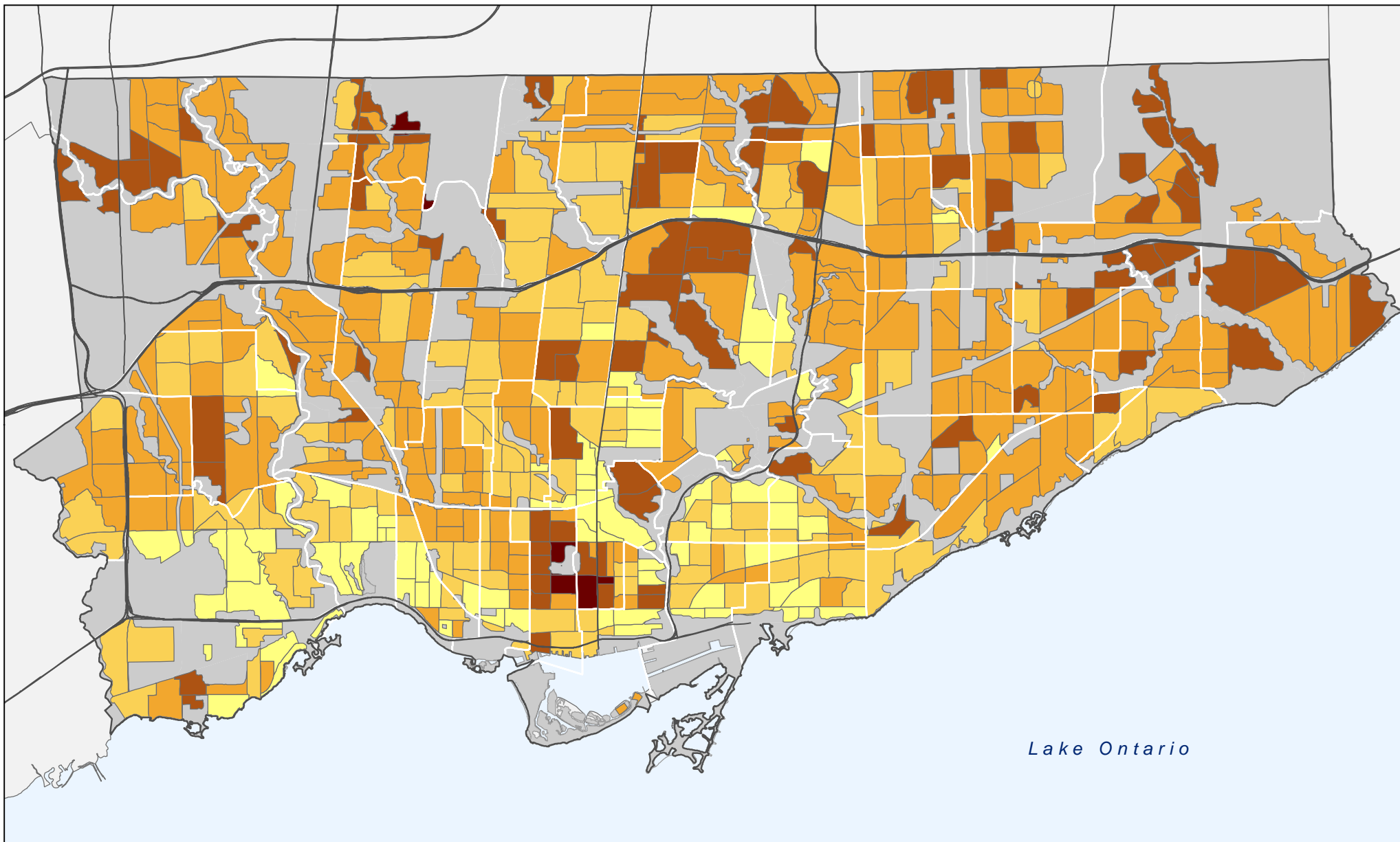
Copyright (c) 2012 City of Toronto. All Rights Reserved.

Published: May 29, 2012

Prepared by: City of Toronto, City Planning, Social
Policy Analysis & Research.

Contact: spar@toronto.ca

City of Toronto Concentration of Youth 15-24 years



Lake Ontario

Legend

% Youth Population

5.9% - 10.0%

10.1% - 12.0%

12.1% - 15.0%

15.1% - 22.0%

22.1% - 33.0%

Expressways

Ward boundary

Non-residential area



0 1 2 3 4
Km



Source: Statistics Canada Census 2011; City of Toronto.

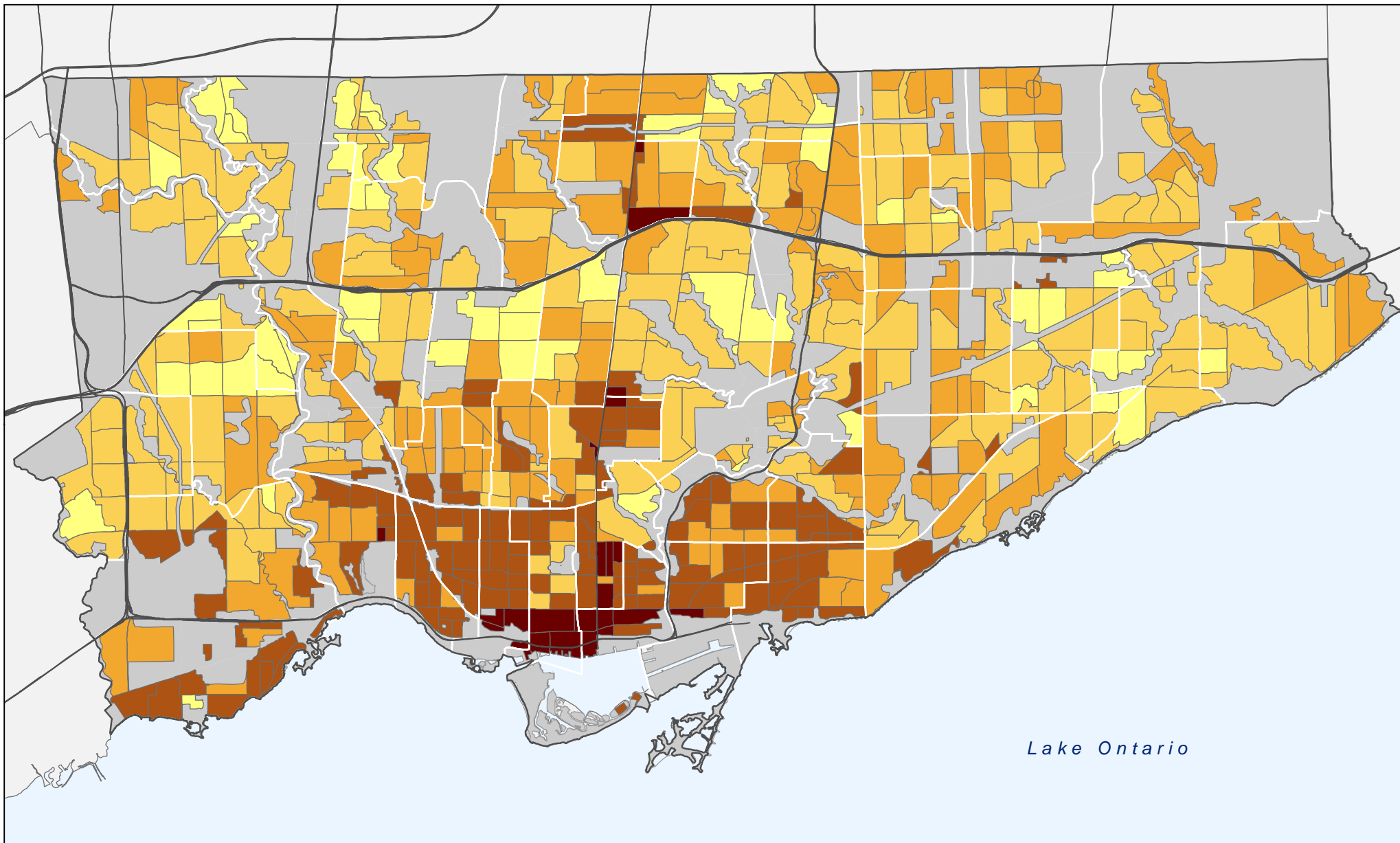
Copyright (c) 2012 City of Toronto. All Rights Reserved.

Published: May 29, 2012

Prepared by: City of Toronto, City Planning, Social
Policy Analysis & Research.

Contact: spar@toronto.ca

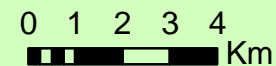
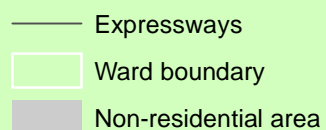
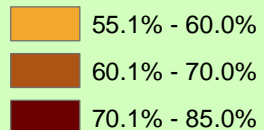
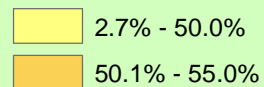
City of Toronto Concentration of Working Age 25-64 years



Lake Ontario

Legend

% Working Age Population



Source: Statistics Canada Census 2011; City of Toronto.

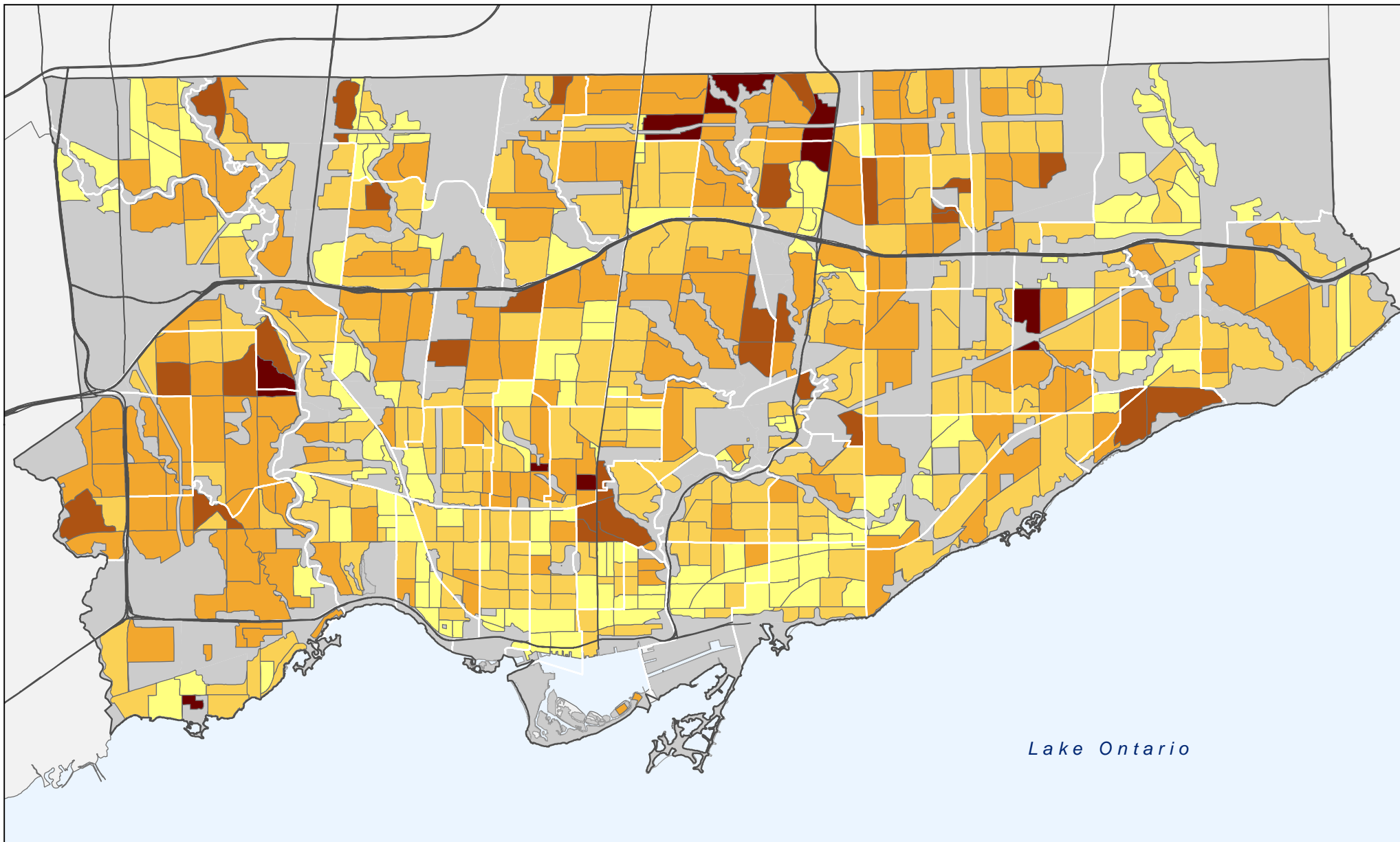
Copyright (c) 2012 City of Toronto. All Rights Reserved.

Published: May 29, 2012

Prepared by: City of Toronto, City Planning, Social Policy Analysis & Research.

Contact: spar@toronto.ca

City of Toronto Concentration of Seniors 65+ years



Lake Ontario

Legend

% Seniors Population

2.9% - 11.0%

11.1% - 16.0%

16.1% - 23.0%

23.1% - 30.0%

30.1% - 80.0%

Expressways

Ward boundary

Non-residential area



0 1 2 3 4
Km



Source: Statistics Canada Census 2011; City of Toronto.

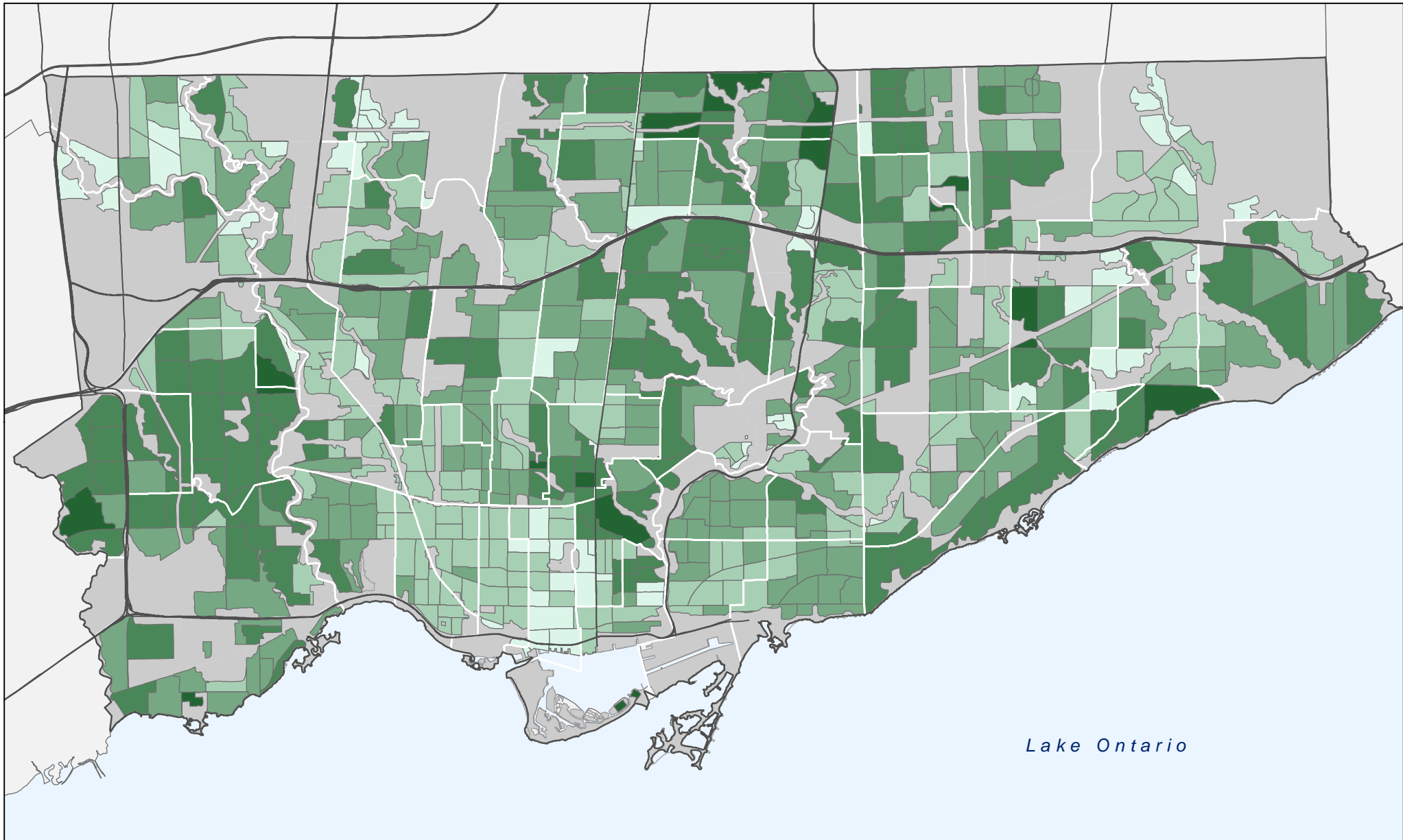
Copyright (c) 2012 City of Toronto. All Rights Reserved.

Published: May 29, 2012

Prepared by: City of Toronto, City Planning, Social
Policy Analysis & Research.

Contact: spar@toronto.ca

City of Toronto Median Age



Lake Ontario

Legend

Median Age in Years

27.1 - 34.0

34.1 - 39.0

39.1 - 43.0

43.1 - 50.0

50.1 - 85.0

Expressways

Ward boundary

Non-residential area



0 1 2 3 4
Km



Source: Statistics Canada Census 2011; City of Toronto.

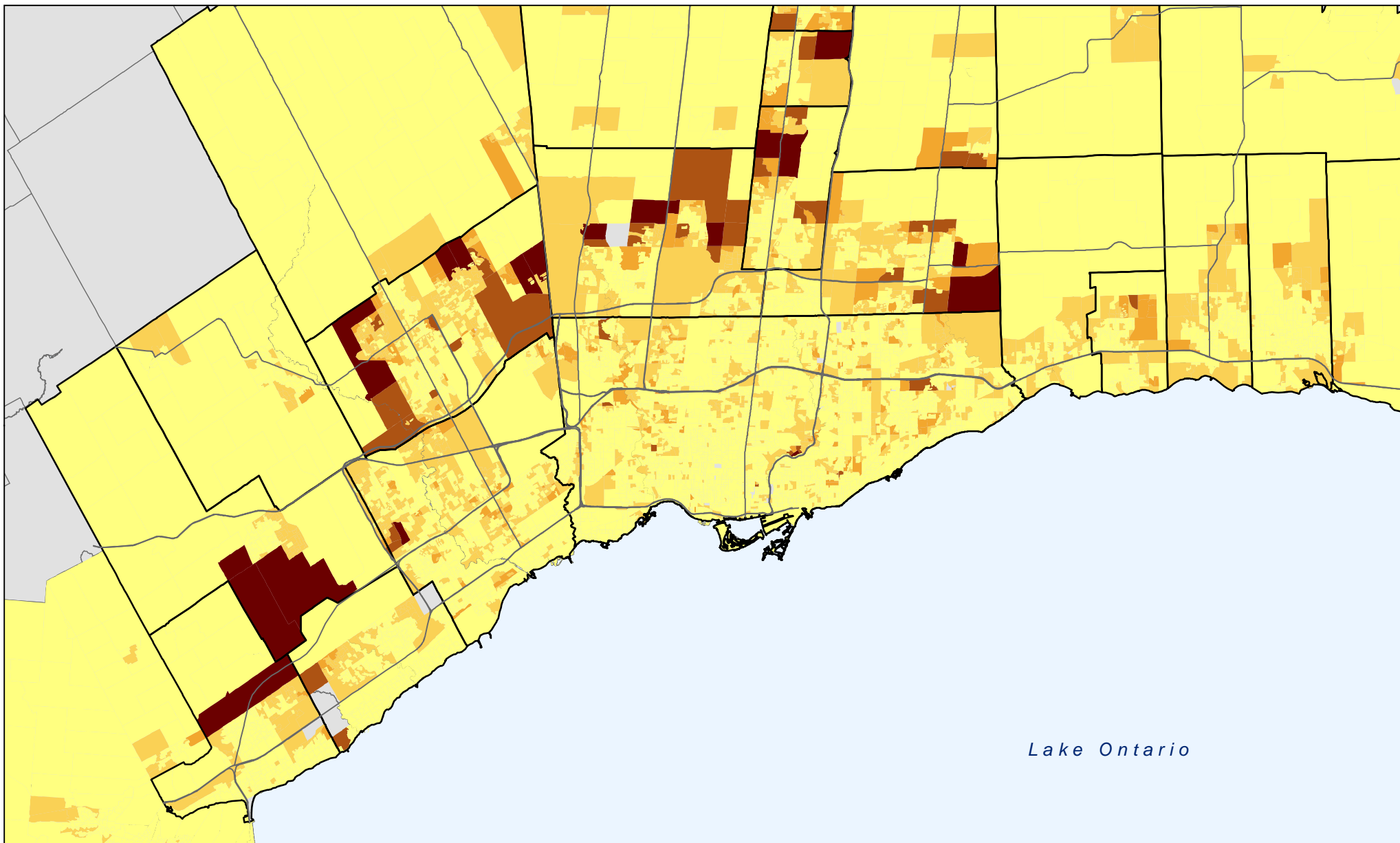
Copyright (c) 2012 City of Toronto. All Rights Reserved.

Published: May 29, 2012

Prepared by: City of Toronto, City Planning, Social
Policy Analysis & Research.

Contact: spar@toronto.ca

GTA Population of Children



Legend

Children 0-14 years

0 - 150

151 - 400

401 - 900

901 - 1,800

1,801 - 3,100

Ontario Census Subdivisions

Expressways



0 4 8 12 16 Km



Source: Statistics Canada Census 2011; City of Toronto.

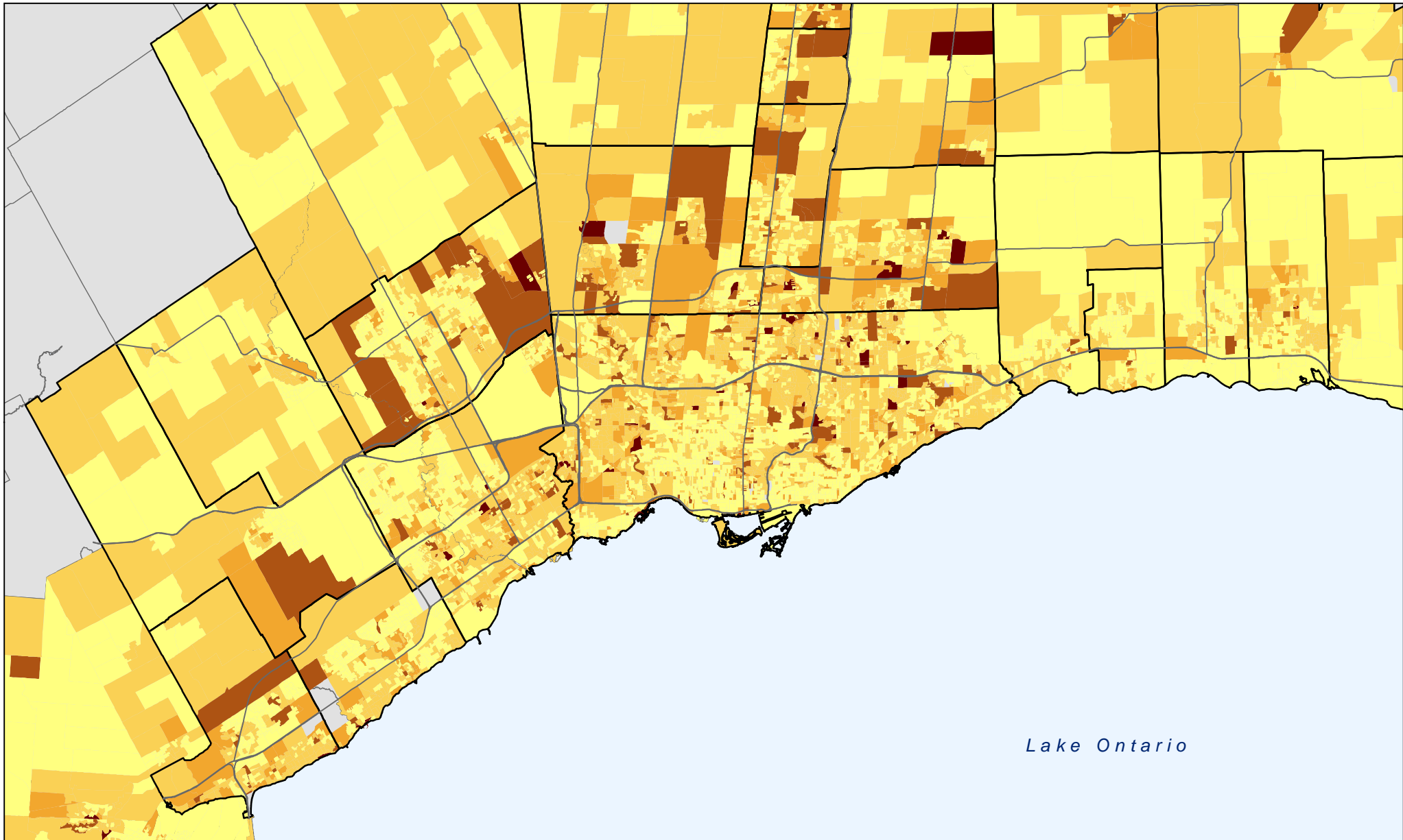
Copyright (c) 2012 City of Toronto. All Rights Reserved.

Published: May 29, 2012

Prepared by: City of Toronto, City Planning, Social Policy Analysis & Research.

Contact: spar@toronto.ca

GTA Population of Seniors



Legend

Persons 65+ years

0 - 80

81 - 170

171 - 325

326 - 600

601 - 1,500



Ontario Census Subdivisions



Expressways



0 4 8 12 16 Km



Source: Statistics Canada Census 2011; City of Toronto.

Copyright (c) 2012 City of Toronto. All Rights Reserved.

Published: May 29, 2012

Prepared by: City of Toronto, City Planning, Social Policy Analysis & Research.

Contact: spar@toronto.ca