



## Creating focal points in neighbourhoods where residents can play, learn, socialize and access services

A community facility assessment identified emerging priorities for each of the five community service sectors

### CHILD CARE



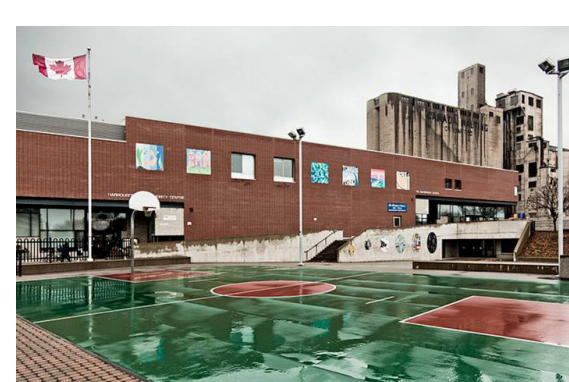
- Existing child care facilities are oversubscribed and new ones are required to support growth
- 7 new child care facilities are planned with 444 new spaces
- Co-location in schools, private development and with other community partners are being explored
- A City-wide Licensed Child Care Demand and Affordability Study is underway and will inform TOcore



### COMMUNITY & HUMAN SERVICES



- Large multi-service agencies (AOCCs, TNCs) operating in ageing facilities may require renewal or expansion to respond to growth
- Leverage public assets as community hubs for use by a range of human services agencies
- Secure new, innovative facilities that are affordable, accessible and include flexible multi-purpose spaces



### RECREATION

- “Block 31” Community Recreation Centre in development in the Railway Lands
- New 57,000 sq. ft. Community Recreation Centre opened in Regent Park and new aquatic facility to be built at Wellesley Community Centre
- Feasibility study underway in partnership with the 519 on the redevelopment of John Innes Community Centre, Moss Park Arena and surrounding park
- Need for programming and facilities to support growth, changing demographic and recreation trends
- Future facility needs to be identified through the 20 year city-wide Parks and Recreation Facility Master Plan currently underway

### SCHOOLS

- TDSB and TCDSB are prioritizing state of good repair for ageing facilities
- New urban school formats are required such as: satellites within community hubs, and co-location in private mixed use development and within City facilities
- Shared use of outdoor play areas by schools and the community
- Work is underway to assess the capacity of existing facilities and the need for new facilities to accommodate growth that will inform TOcore

### LIBRARIES

- Additional library facilities will be required in high-growth neighbourhoods
- Major capital improvements planned for Sanderson, Parliament and St. Lawrence libraries
- Minor capital improvements planned for existing neighbourhood branches





## Identifying community infrastructure priorities required to support future growth

### POLICY DIRECTIONS

#### FACILITIES

**Provide new affordable, accessible and appropriate facilities and/or space opportunities by:**

- Improving, expanding and reconfiguring existing facilities to address current and future space and program needs
- Identifying community facility priorities and securing these facilities in high growth and currently underserved areas in a timely manner through the use of planning and funding tools
- Making space accessible and affordable for non-profit agencies through a review of the Community Space Tenancy Policy (formerly the Below Market Rent Policy)
- Designing community facilities that are highly visible, have good access to public transit and are well-connected with the public realm
- Strategically locating and integrating new facilities within mixed use buildings and/or co-located facilities to maximize existing public assets and efficiency in service delivery
- Ensuring “no-net-loss” of existing community services and facilities

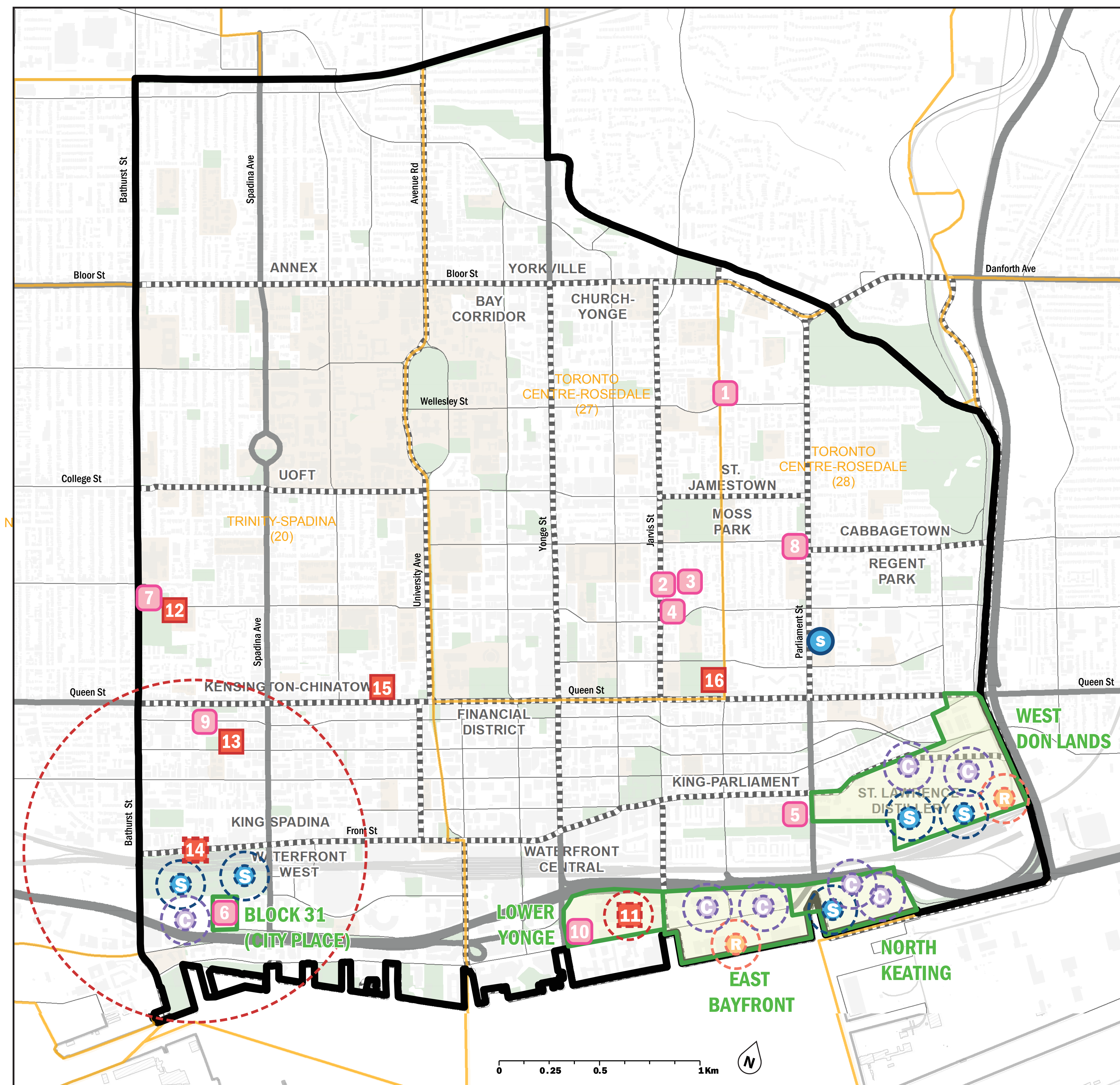


#### PARTNERSHIPS

**Build new and innovative partnerships and collaborations for community services and facilities (CS&F) throughout Downtown by:**

- Strengthening partnerships with school boards and Downtown institutions including hospitals, universities and colleges to collaborate on CS&F priorities
- Exploring innovative ways to deliver CS&F in the Downtown, such as through multi-service hubs
- Creating clusters and social gathering spaces by capitalizing on development opportunities and leveraging public assets
- Strengthening partnerships between community-based organizations and City divisions to address how to improve services and facilities for the growing and diverse needs of the various populations in the Downtown





## T0core CS+F Study: Opportunities

### Planned Future Facilities

- C Future Licensed Child Care Centres
- R City of Toronto Recreation Facilities
- S Schools

### Planned Capital Facilities

- |   |   |
|---|---|
| <span style="border: 1px solid black; border-radius: 50%; padding: 2px;">1</span> Wellesley Community Centre (New Pool)             | <span style="border: 1px solid black; border-radius: 50%; padding: 2px;">6</span> Block 31 (City Place) Community Recreation Centre |
| <span style="border: 1px solid black; border-radius: 50%; padding: 2px;">2</span> 261 Jarvis/ Centre for Sport Development          | <span style="border: 1px solid black; border-radius: 50%; padding: 2px;">7</span> Sanderson Library                                 |
| <span style="border: 1px solid black; border-radius: 50%; padding: 2px;">3</span> George St Revitalization                          | <span style="border: 1px solid black; border-radius: 50%; padding: 2px;">8</span> Parliament St Library                             |
| <span style="border: 1px solid black; border-radius: 50%; padding: 2px;">4</span> Dundas/Jarvis Redevelopment (New Community Space) | <span style="border: 1px solid black; border-radius: 50%; padding: 2px;">9</span> 505 Richmond St. W (Proposed YMCA Centre)         |
| <span style="border: 1px solid black; border-radius: 50%; padding: 2px;">5</span> St. Lawrence Library                              | <span style="border: 1px solid black; border-radius: 50%; padding: 2px;">10</span> Lower Yonge Precinct - New PF+R Facility         |

### Future Opportunity Sites to Explore

- |   |  |
|---|--|
| <span style="border: 1px solid black; border-radius: 50%; padding: 2px;">11</span> Lower Yonge Precinct - Potential New TDSB School | <span style="border: 1px solid black; border-radius: 50%; padding: 2px;">15</span> Harrison Pool/ University Settlement House        |
| <span style="border: 1px solid black; border-radius: 50%; padding: 2px;">12</span> Scadding Court Community Centre and Pool         | <span style="border: 1px solid black; border-radius: 50%; padding: 2px;">16</span> Moss Park Redevelopment Project (John Innes/ 519) |
| <span style="border: 1px solid black; border-radius: 50%; padding: 2px;">13</span> Potential Hub (Brant St School)                  |  |
| <span style="border: 1px solid black; border-radius: 50%; padding: 2px;">14</span> Potential New Pool Site (Waterfront West)        |  |

- Location of facilities and sites is approximate.
- Railway
- Road
- River
- Downtown Core
- Neighbourhoods
- Ward Boundaries

### Non-Residential Land Use

- Government and Institutional
- Parks and Open Space



See adjacent board for examples of opportunities





## Planned capital facilities and future opportunity sites



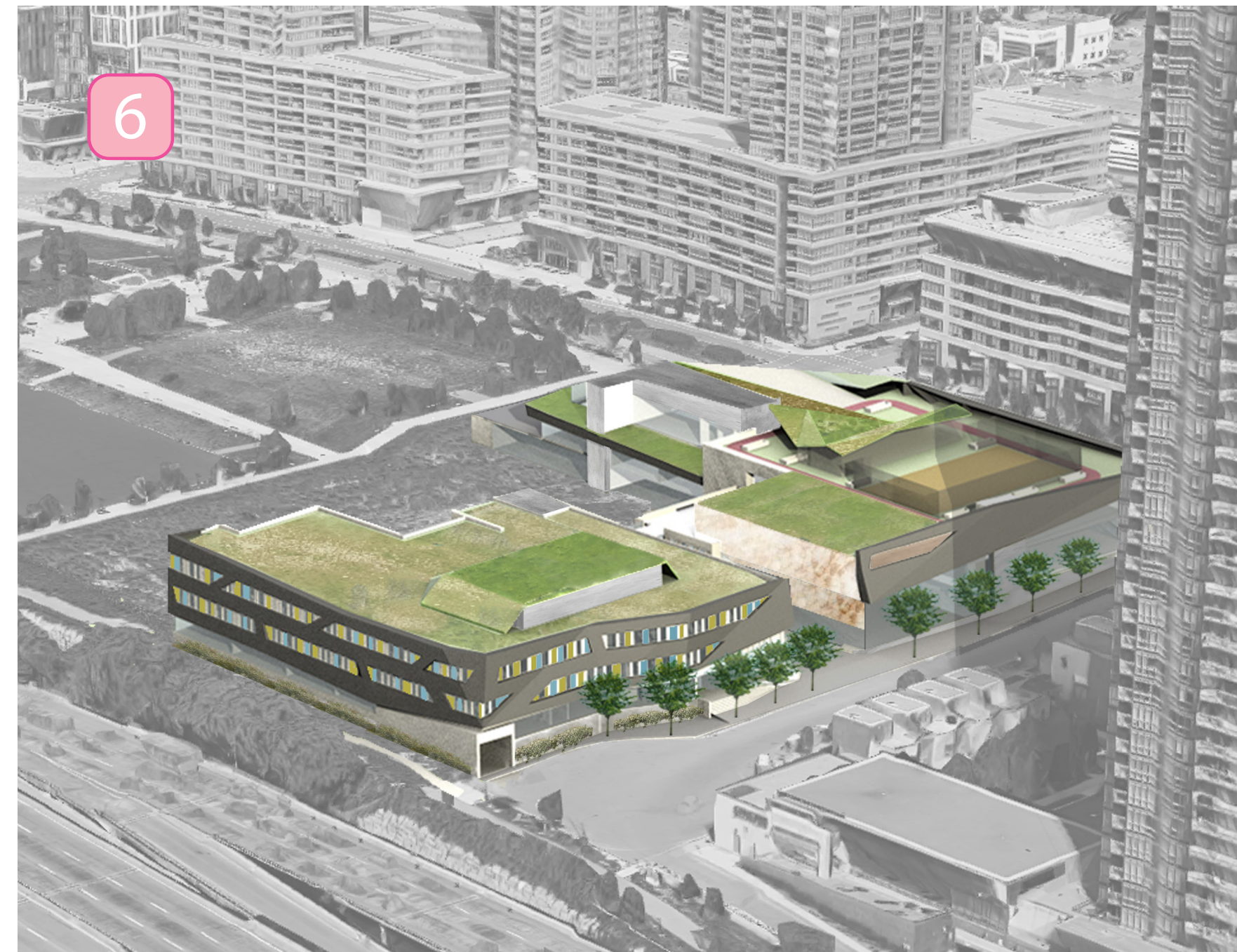
### WELLESLEY COMMUNITY CENTRE (POOL):

Wellesley Indoor Pool will feature a 5 lane pool, leisure pool, spa tub and steam room.



### GEORGE STREET REVITALIZATION:

The George Street Revitalization will transform the Seaton House men's shelter into a dynamic mix of housing and programs for homeless and vulnerable seniors.



### BLOCK 31 (RAILWAY LANDS):

An urban community hub model that will feature a community centre, child care centre and two schools.



### BRANT STREET SCHOOL:

A potential opportunity site to develop a hub model to make use of school space for community services.



### SANDERSON LIBRARY AND SCADDING COURT COMMUNITY CENTRE:

These two side-by-side facilities offer a strategic opportunity to revitalize existing facilities to respond to growth.



### MORE MOSS PARK:

A joint redevelopment project between the City of Toronto and the 519 Community Centre for new recreational facilities and improved public space.