

Trees to be removed



Tree No	Tree Species		Condition	Diameter (cm)
701	PICEA PUNGENS GLAUCA	Colorado Spruce	ModHigh	21
702	PICEA PUNGENS GLAUCA	Colorado Spruce	ModHigh	22

Trees to be preserved (if possible)

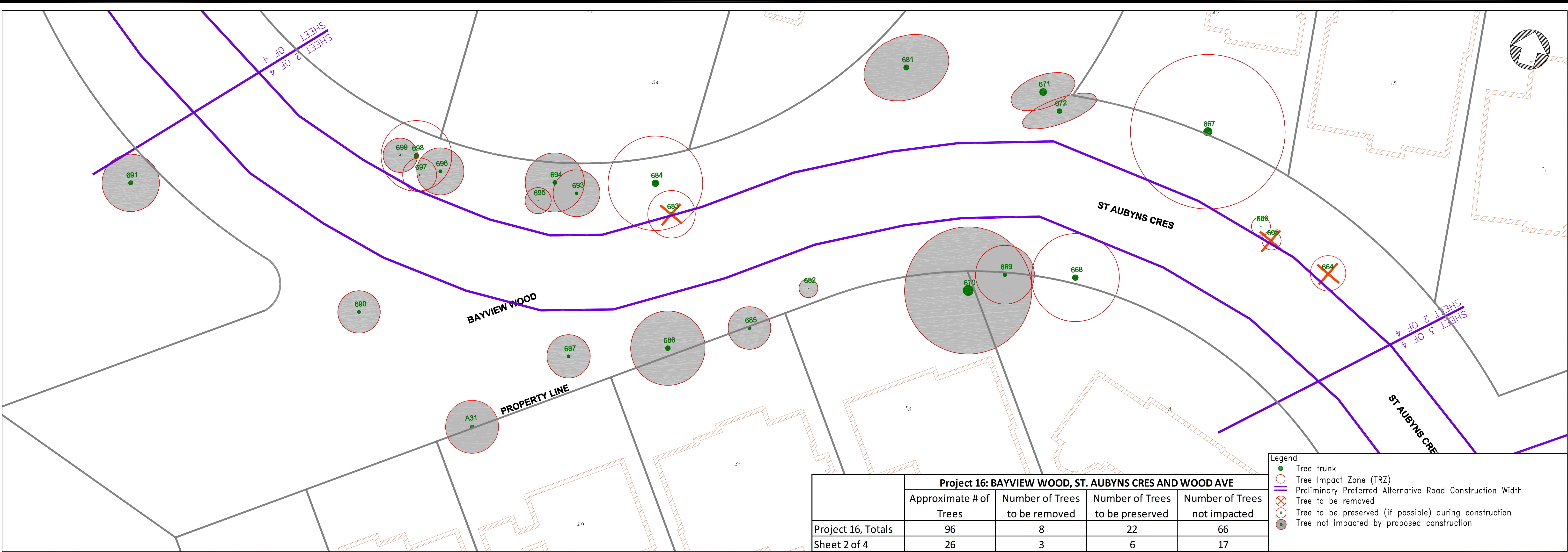


Tree No	Tree Species		Condition	Diameter (cm)
714	ACER PLATANOIDES	Norway Maple	ModHigh	71
723	TILIA CORDATA	Littleleaf Linden	ModHigh	68
700	PICEA PUNGENS GLAUCA	Colorado Spruce	ModHigh	19
704	PICEA PUNGENS GLAUCA	Colorado Spruce	ModHigh	17
705	PICEA GLAUCA	White Spruce	ModHigh	24

Trees not Impacted



Tree No	Tree Species		Conditions	Diameter (cm)
703	ACER PALMATUM	Japanese Maple	ModHigh	8
707	TSUGA CANADENSIS	Canadian Hemlock	ModHigh	25
708	TSUGA CANADENSIS	Canadian Hemlock	ModHigh	23
709	LIQUIDAMBAR STYRACIFLUA	American Sweetgum	ModHigh	8
710	PICEA OMORICA	Serbian Spruce	ModHigh	6
711	BETULA PAPYRIFERA	Paper Birch	ModHigh	27
712	BETULA PAPYRIFERA	Paper Birch	ModHigh	42
713	POPULUS NIGRA ITALICA	Black Poplar	ModHigh	20
715	PICEA ABIES	Norway Spruce	Moderate	52
716	MORUS ALBA	White Mulberry	Moderate	19
717	FAGUS SYLVATICA ATROPUNICEA	Copper Beech	ModHigh	5
718	BETULA PAPYRIFERA	Paper Birch	ModHigh	37
719	ACER PLATANOIDES	Norway Maple	ModHigh	83
720	GLEDITSIA TRIACANTHOS VAR INERMIS	Smooth Honeylocust	ModHigh	10
721	GLEDITSIA TRIACANTHOS VAR INERMIS	Smooth Honeylocust	ModHigh	29
722	FAGUS SYLVATICA ATROPUNICEA	Copper Beech	ModHigh	31
724	ACER PLATANOIDES	Norway Maple	ModHigh	65
725	ACER PLATANOIDES	Norway Maple	ModHigh	44
692	ACER PLATANOIDES	Norway Maple	High	61
6238	TSUGA CANADENSIS	Canadian Hemlock	ModHigh	30
6239	SYRINGA RETICULATA IVORY SILK	Japanese Tree Lilac	ModHigh	15
6240	GINKGO BILOBA	Ginkgo	ModHigh	22
6241	TSUGA CANADENSIS	Canadian Hemlock	ModHigh	34



Trees to be removed



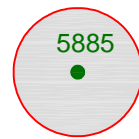
Tree No	Tree Species		Condition	Diameter (cm)
665	PICEA OMORIKA	Serbian Spruce	ModHigh	9
683	PICEA PUNGENS GLAUCA	Colorado Spruce	ModHigh	39
664	PSEUDOTSUGA MENZIESII	Douglas Fir	Moderate	28

Trees to be preserved (if possible)



Tree No	Tree Species		Condition	Diameter (cm)
697	PICEA GLAUCA	White Spruce	ModHigh	11
698	PINUS NIGRA	Black Pine	ModHigh	53
666	PICEA OMORIKA	Serbian Spruce	ModHigh	7
667	QUERCUS RUBRA	Red Oak	ModHigh	92
668	GLEDITSIA TRIACANTHOS VAR INERMIS	Smooth Honeylocust	High	63
684	QUERCUS RUBRA	Red Oak	ModHigh	75

Trees not Impacted



Tree No	Tree Species		Condition	Diameter (cm)
669	GLEDITSIA TRIACANTHOS VAR INERMIS	Smooth Honeylocust	ModHigh	44
670	ACER SACCHARINUM	Silver Maple	High	112
671	QUERCUS RUBRA	Red Oak	ModHigh	78
672	QUERCUS RUBRA	Red Oak	ModHigh	53
681	ACER PLATANOIDES	Norway Maple	ModHigh	59
682	ACER GINNALA	Amur Maple	ModHigh	6
685	PINUS NIGRA	Black Pine	ModHigh	36
686	QUERCUS RUBRA	Red Oak	High	54
687	PICEA GLAUCA	White Spruce	ModHigh	34
690	TAXUS CUSPIDATA	Japanese Yew	ModHigh	34
691	ACER PLATANOIDES	Norway Maple	Low	48
693	TAXUS CUSPIDATA	Japanese Yew	Moderate	32
694	PINUS NIGRA	Black Pine	ModHigh	45
695	ULMUS AMERICANA	White Elm	ModHigh	6
696	QUERCUS RUBRA	Red Oak	ModHigh	36
699	PICEA GLAUCA	White Spruce	ModHigh	16
A31	PICEA GLAUCA	White Sprue	Moderate	41



Engineering & Construction Services

MICHAEL D'ANDREA, P.ENG.
EXECUTIVE DIRECTOR
Engineering &
Construction Services

JOHN P. KELLY, P.ENG.
Director, Design & Construction
Linear Underground Infrastructure

Manager, Design & Construction
Linear Underground Infrastructure
Basement Flooding Protection Program

16 BAYVIEW WOOD, ST. AUBYNS CRES AND WOOD AVE

City of Toronto

Plan and Profile (Not for Construction)

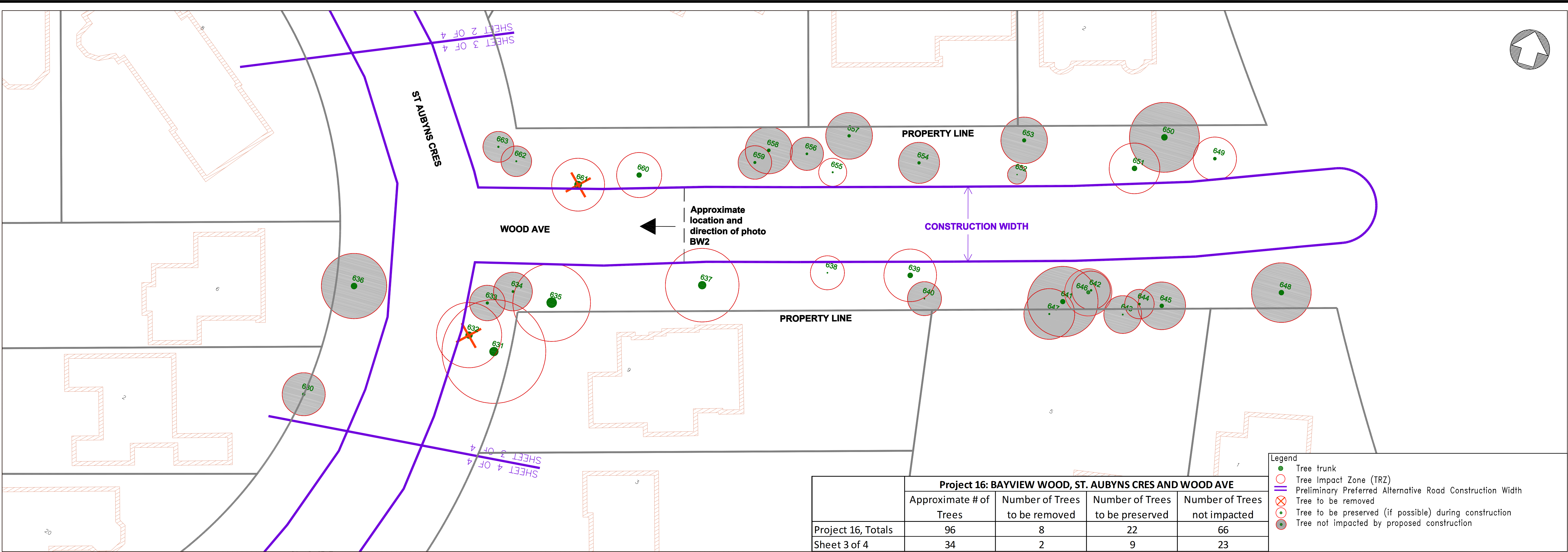
DESIGN: CR DRAFTING: CR CHECK: PT CONTRACT No.

SCALE: HOR 1:200 VER 1:100

DATE: 11/05/2015

DRAWING NUMBER:

SHEET No.
2 OF 4



Trees to be removed



Tree No	Tree Species		Condition	Diameter (cm)
632	QUERCUS RUBRA	Red Oak	ModHigh	74
661	QUERCUS RUBRA	Red Oak	ModHigh	78

Trees to be preserved (if possible)



Tree No	Tree Species		Condition	Diameter (cm)
649	ACER SACCHARUM SSP SACCHARUM	Sugar Maple	Moderate	33
651	ACER SACCHARUM SSP SACCHARUM	Sugar Maple	High	54
655	SORBUS AUCUPARIA	Mountain Ash	ModHigh	16
660	TILIA CORDATA	Littleleaf Linden	High	53
631	QUERCUS RUBRA	Red Oak	ModHigh	95
635	QUERCUS RUBRA	Red Oak	High	109
637	ACER SACCHARUM SSP SACCHARUM	Sugar Maple	ModHigh	85
638	THUJA OCCIDENTALIS	Eastern White Cedar	ModHigh	12
639	ACER SACCHARUM SSP SACCHARUM	Sugar Maple	ModHigh	55

Trees not Impacted



Tree No	Tree Species		Condition	Diameter (cm)
630	ACER PLATANOIDES	Norway Maple	ModHigh	31
636	ACER PLATANOIDES	Norway Maple	ModHigh	65
633	ACER PLATANOIDES	Norway Maple	ModHigh	29
634	ACER PLATANOIDES	Norway Maple	ModHigh	24
640	PICEA ABIES	Norway Spruce	ModHigh	12
641	ACER SACCHARUM SSP SACCHARUM	Sugar Maple	Moderate	51
642	ACER SACCHARUM SSP SACCHARUM	Sugar Maple	ModHigh	21
643	ACER SACCHARUM SSP SACCHARUM	Sugar Maple	ModHigh	14
644	ACER SACCHARUM SSP SACCHARUM	Sugar Maple	ModHigh	22
645	ACER SACCHARUM SSP SACCHARUM	Sugar Maple	Moderate	42
647	ACER SACCHARUM SSP SACCHARUM	Sugar Maple	ModHigh	16
648	ACER PLATANOIDES	Norway Maple	High	53
650	ACER SACCHARUM SSP SACCHARUM	Sugar Maple	ModHigh	65
652	AMELANCHIER LAEVIS	Smooth Serviceberry	ModHigh	9
653	ACER RUBRUM	Red Maple	Low	39
654	ACER PLATANOIDES	Norway Maple	Moderate	30
656	ACER PLATANOIDES	Norway Maple	ModHigh	23
657	BETULA PAPYRIFERA	Paper Birch	Moderate	31
658	BETULA PAPYRIFERA	Paper Birch	ModHigh	34
659	BETULA PAPYRIFERA	Paper Birch	ModHigh	27
662	PICEA OMORIKA	Serbian Spruce	ModHigh	15
663	PICEA OMORIKA	Serbian Spruce	ModHigh	18
646	ACER SACCHARUM SSP SACCHARUM	Sugar Maple	Moderate	38



Engineering & Construction Services

MICHAEL D'ANDREA, P.ENG.
EXECUTIVE DIRECTOR
Engineering &
Construction Services

JOHN P. KELLY, P.ENG.
Director, Design & Construction
Linear Underground Infrastructure

Manager, Design & Construction
Linear Underground Infrastructure
Basement Flooding Protection Program

16 BAYVIEW WOOD, ST. AUBYN'S CRES AND WOOD AVE

City of Toronto

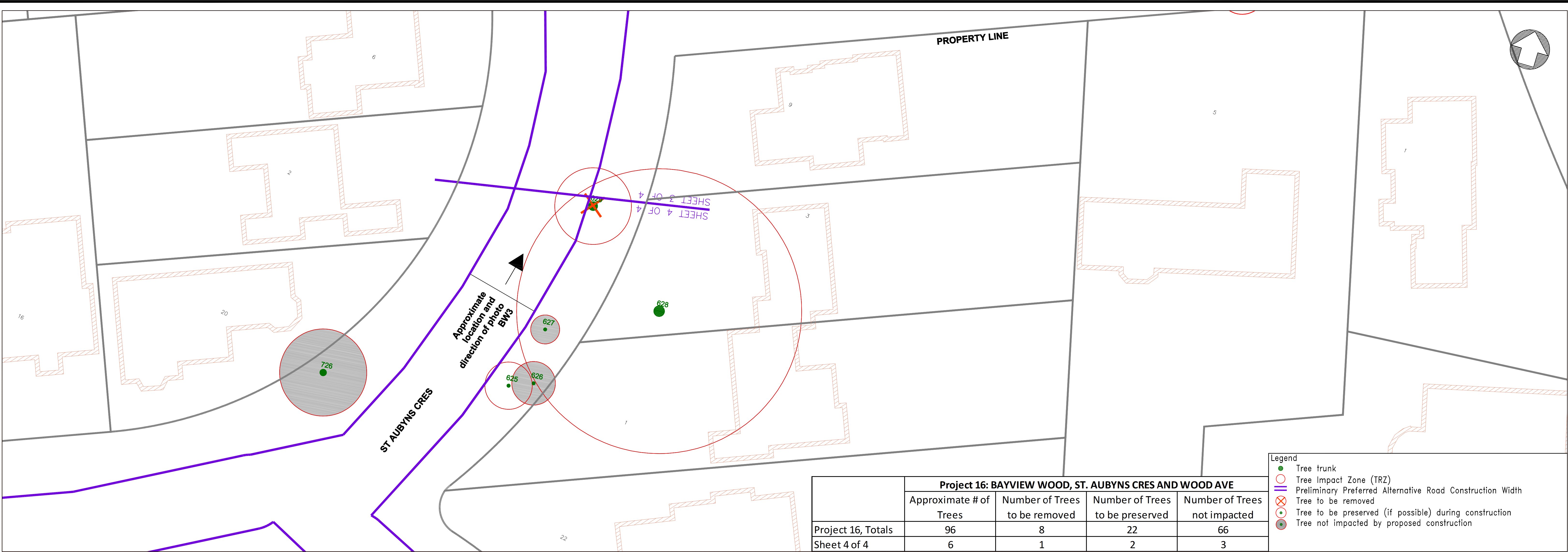
Plan and Profile (Not for Construction)

DESIGN: CR DRAFTING: CR CHECK: PT CONTRACT No.

SCALE: HOR 1:200 VER 1:100

DATE: 11/05/2015 DRAWING NUMBER:

SHEET No.
3 OF 4



Trees to be removed

Tree No	Tree Species		Condition	Diameter (cm)
629	QUERCUS RUBRA	Red Oak	ModHigh	99

Trees to be preserved (if possible)

Tree No	Tree Species		Condition	Diameter (cm)
625	GLEDITSIA TRIACANTHOS VAR INERMIS	Smooth Honeylocust	ModHigh	38
628	QUERCUS RUBRA	Red Oak	ModHigh	119

Trees not Impacted

Tree No	Tree Species		Conditions	Diameter (cm)
626	PSEUDOTSUGA MENZIESII	Douglas Fir	Moderate	37
726	ROBINIA PSEUDOACACIA	Black Locust	ModHigh	74
627	MALUS BACCATA	Siberian Crabapple	Moderate	37