

Trees to be removed

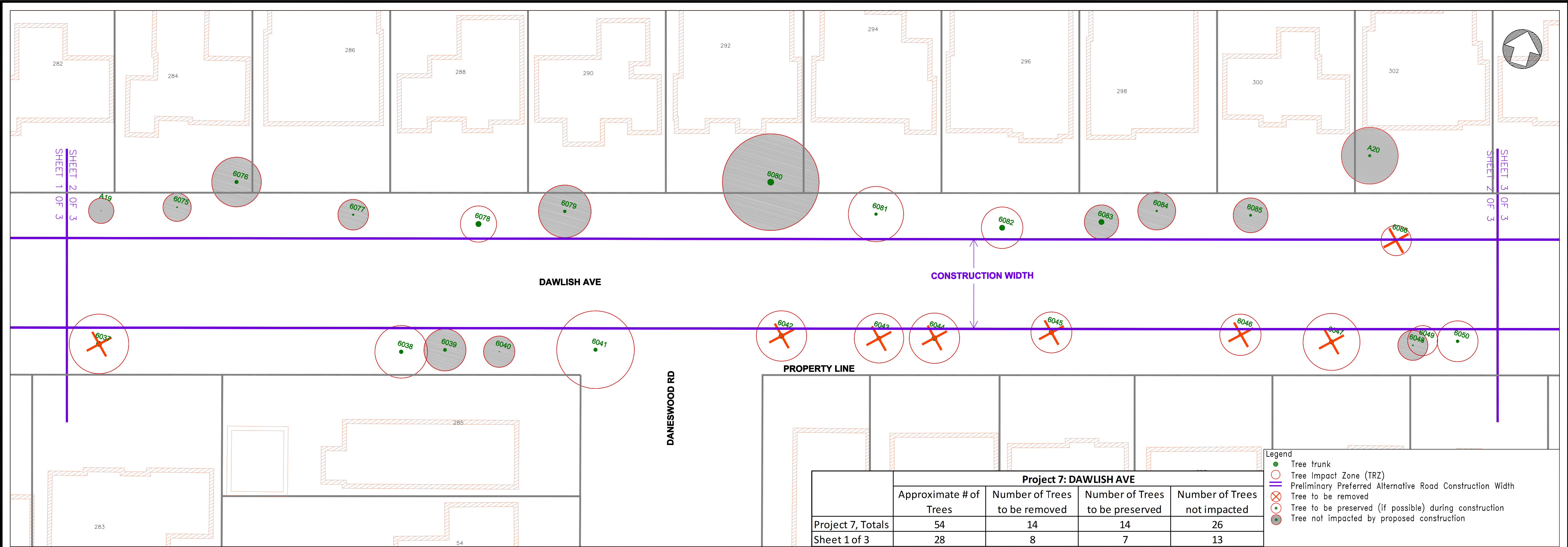
Tree No	Tree Species		Condition	Diameter (cm)
6025	ACER PLATANOIDES	Norway Maple	Moderate	70
6026	ULMUS AMERICANA	White Elm	High	125
6027	ACER PLATANOIDES	Norway Maple	ModHigh	59
6030	ACER PLATANOIDES	Norway Maple	Moderate	37
6036	ACER PLATANOIDES	Norway Maple	High	52

Trees to be preserved (if possible)

Tree No	Tree Species		Condition	Diameter (cm)
6031	PICEA PUNGENS GLAUCA	Colorado Spruce	ModHigh	28
6033	PICEA PUNGENS	Colorado Spruce	ModHigh	24
6067	TILIA CORDATA	Littleleaf Linden	ModHigh	48
6068	TILIA CORDATA	Littleleaf Linden	High	57

Trees not Impacted

Tree No	Tree Species		Condition	Diameter (cm)
6028	PICEA PUNGENS GLAUCA	Colorado Spruce	Moderate	59
6029	JUGLANS NIGRA	Black walnut	ModHigh	37
6032	PYRUS CALLERYANA GLENS FORM	Chanticlear Pear	Moderate	25
6034	PYRUS CALLERYANA GLENS FORM	Chanticlear Pear	ModHigh	16
6035	GLEDITSIA TRIACANTHOS VAR INERMIS	Smooth Honeylocust	High	53
6069	ACER PLATANOIDES	Norway Maple	High	52
6070	ROBINIA PSEUDOACACIA	Black Locust	High	84
6071	PYRUS CALLERYANA GLENS FORM	Chanticlear Pear	Moderate	5
6072	FRAXINUS PENNSYLVANICA	Green Ash	High	78
6073	PICEA PUNGENS KOSTERI	Blue Spruce	ModHigh	40
6074	PICEA PUNGENS KOSTERI	Blue Spruce	ModHigh	39
A18	SYRINGA VULGARIS	Lilac	Moderate	18



Trees to be removed

Tree No	Tree Species		Condition	Diameter (cm)
6037	ACER PLATANOIDES	Norway Maple	ModHigh	58
6042	ACER PLATANOIDES	Norway Maple	High	56
6043	ACER PLATANOIDES	Norway Maple	ModHigh	46
6044	TILIA CORDATA	Littleleaf Linden	High	56
6045	ACER PLATANOIDES	Norway Maple	ModHigh	52
6046	ACER PLATANOIDES	Norway Maple	Moderate	36
6047	ACER PLATANOIDES	Norway Maple	ModHigh	49
6086	VIBURNUM SP	Viburnum sp.	ModHigh	14

Trees to be preserved (if possible)

Tree No	Tree Species		Condition	Diameter (cm)
6038	THUJA OCCIDENTALIS	Eastern White Cedar	Moderate	41
6041	FRAXINUS PENNSYLVANICA	Green Ash	ModHigh	38
6049	FAGUS SYLVATICA PENDULA	Weeping European Beech	ModHigh	12
6050	ACER SACCHARUM SSP SACCHARUM	Sugar Maple	ModHigh	31
6078	ACER PLATANOIDES	Norway Maple	Moderate	59
6081	BETULA PAPYRIFERA	White Birch	Moderate	30
6082	ACER PLATANOIDES	Norway Maple	High	58

Trees not Impacted

Tree No	Tree Species		Condition	Diameter (cm)
6039	BETULA PAPYRIFERA	Paper Birch	Moderate	35
6040	LIRODENDRON TULIPIFERA	Tulip Tree	ModHigh	6
6048	FAGUS SYLVATICA PENDULA	Weeping Beech	ModHigh	12
6075	ACER GINNALA	Amur Maple	ModHigh	12
6076	MALUS BACCATA	Siberian Crabapple	ModHigh	38
6077	PYRUS CALLERYANA GLENS FORM	Chanticlear Pear	Moderate	18
6079	GLEDITSIA TRIACANTHOS VAR INERMIS	Smooth Honeylocust	ModHigh	31
6080	GLEDITSIA TRIACANTHOS VAR INERMIS	Smooth Honeylocust	High	68
6083	AMELANCHIER LAEVIS	Smooth Serviceberry	Moderate	58
6084	PICEA PUNGENS GLAUCA	Colorado Spruce	ModHigh	18
6085	PYRUS CALLERYANA GLENS FORM	Chanticlear Pear	Moderate	24
A19	AMELANCHIER SP.	Serviceberry sp.	Moderate	5
A20	BETULA PENDULA	European Birch	ModHigh	28

