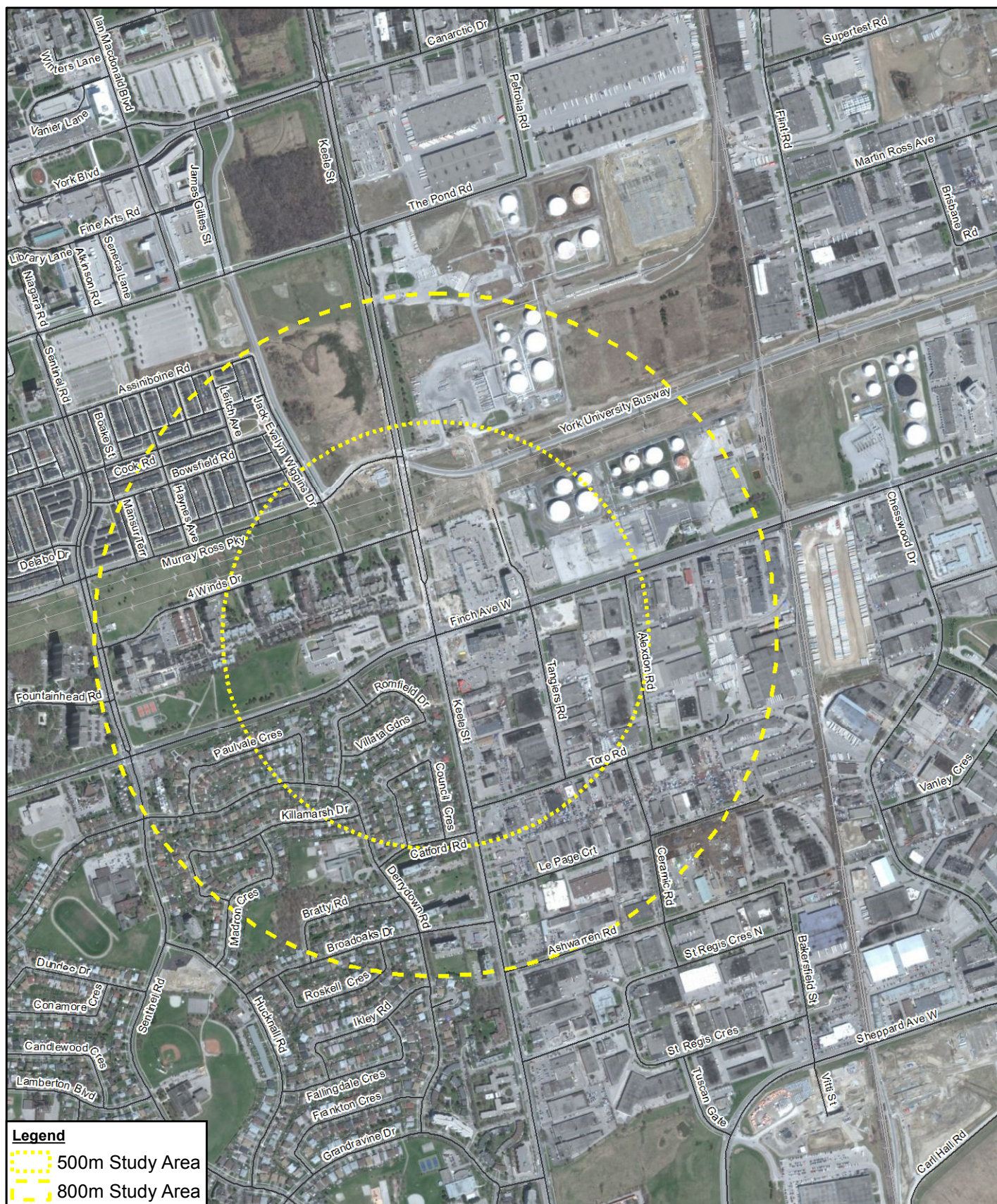


# Appendices

## APPENDIX A: STUDY FIGURES

## Appendix A-1: Figure 1 – Study Areas





0 120 240 360  
Meters  
Coordinate System:  
NAD 1983 UTM Zone 17N



CITY OF TORONTO  
FINCH AND KEELE PLANNING STUDY

11116202  
May 12, 2016

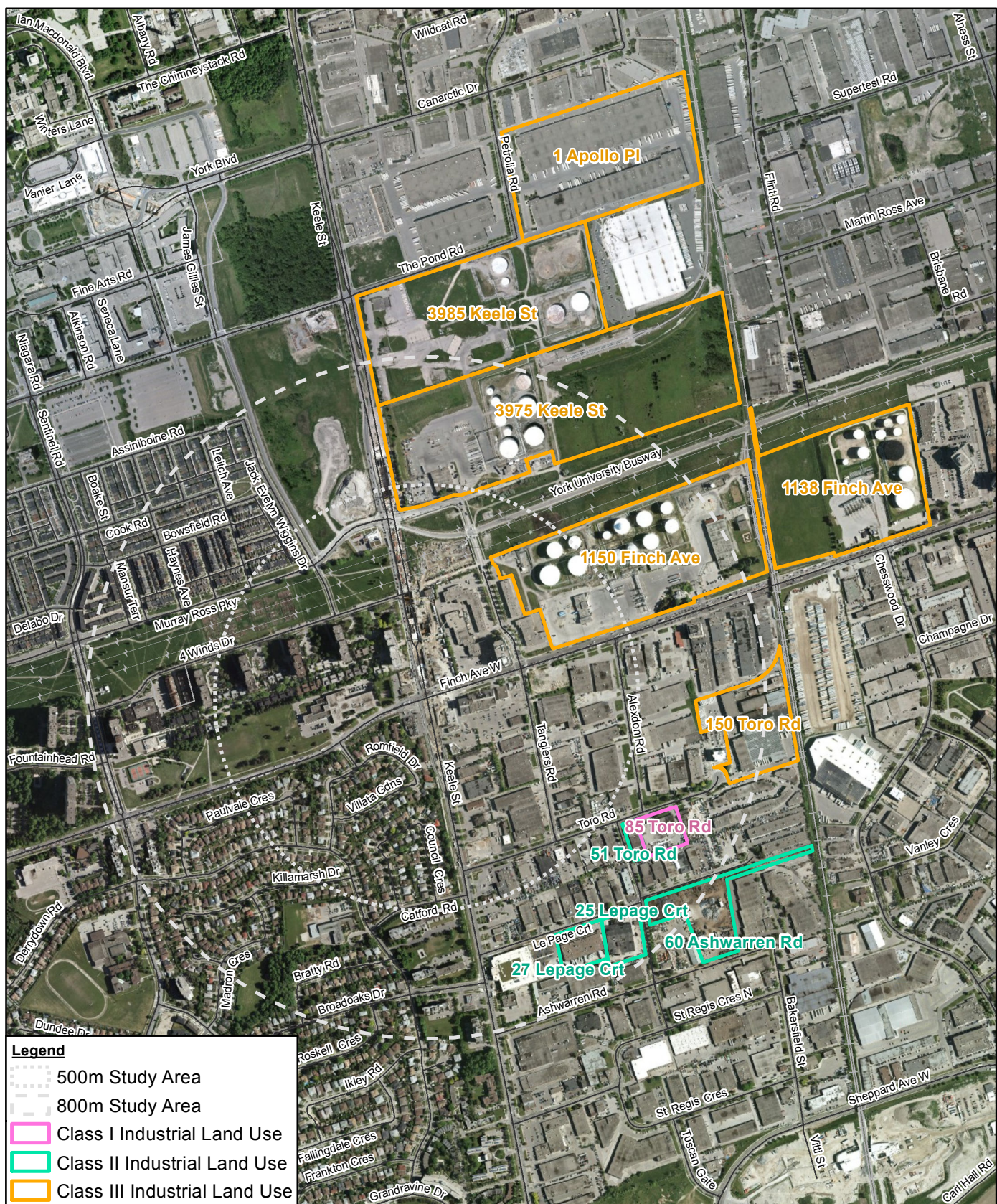
STUDY AREAS

FIGURE 1



## Appendix A-2: Figure 2 – Land Use





Source: MNR NRVIS, 2015. Produced by GHD under licence from Ontario Ministry of Natural Resources and Forestry, © Queen's Printer 2016;  
Image Source: Microsoft product screen shot(s) reprinted with permission from Microsoft Corporation

0 95 190 285  
Meters

Coordinate System:  
NAD 1983 UTM Zone 17N



CITY OF TORONTO  
KEELE AND FINCH PLANNING STUDY

11116202  
Jun 1, 2016

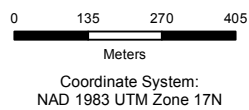
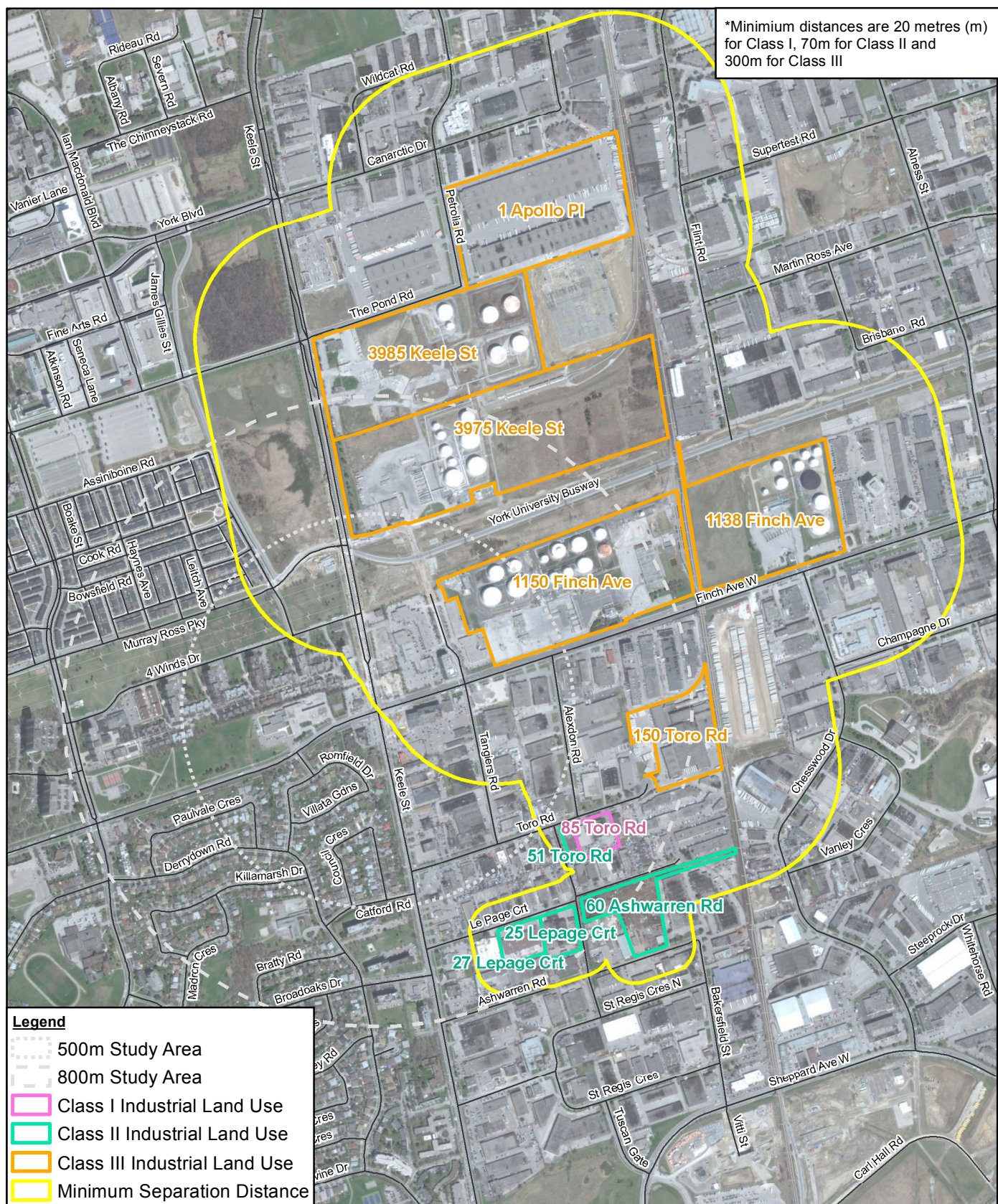
LAND USE

FIGURE 2



### Appendix A-3: Figure 3 – Minimum Separation Distance





CITY OF TORONTO  
KEELE AND FINCH PLANNING STUDY

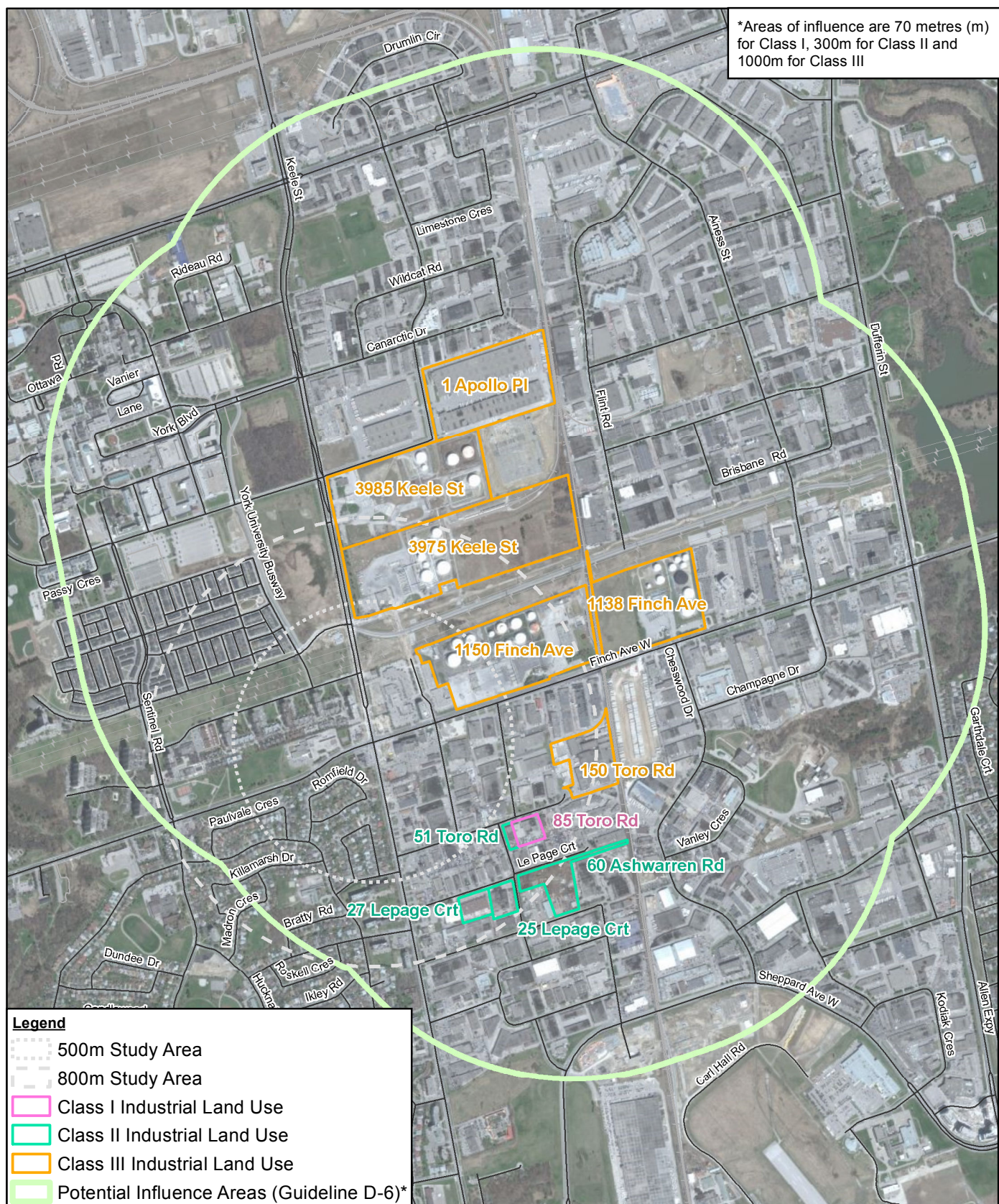
MINIMUM SEPARATION  
DISTANCE

11116202  
Jul 7, 2016

FIGURE 3

#### Appendix A-4: Figure 4 – Potential Influence Area





0 150 300 450  
Meters

Coordinate System:  
NAD 1983 UTM Zone 17N



CITY OF TORONTO  
KEELE AND FINCH PLANNING STUDY

11116202  
Jul 7, 2016

POTENTIAL INFLUENCE AREA FIGURE 4



## Appendix A-5: Figure 5 – Points of Interest







**Photo Log**  
Project: 11116202

1



2



3



4



5



6



7



8



9







10



11



12



13



14



15



16



17



18

