



EMPHASIS AREA 4: CYCLISTS

One cyclist is seriously injured or killed in a collision every 8 days on Toronto's roads.

Cyclist collisions involve a motor vehicle striking a person riding a bicycle.

16%

OF COLLISIONS INVOLVING A CYCLISTS IN THE LAST 5 YEARS HAPPENED BY A VEHICLE TURNING LEFT ACROSS A CYCLISTS PATH

15%

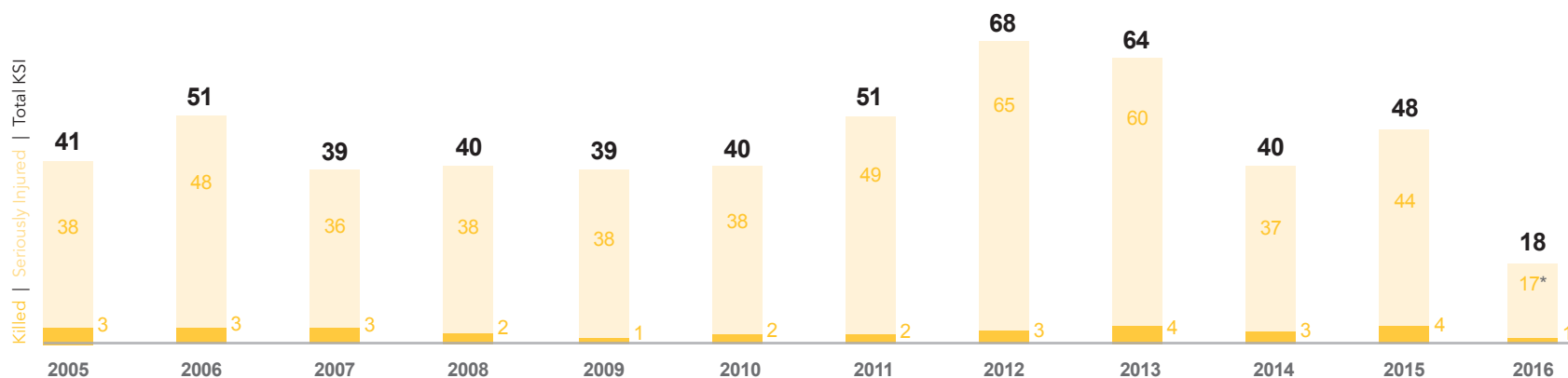
OF CYCLISTS IN THE LAST 5 YEARS WERE IN A COLLISION AT AN INTERSECTION, LANEWAY OR DRIVEWAY

12%

OF CYCLISTS IN THE LAST 5 YEARS WERE SIDESWEPT BY A VEHICLE

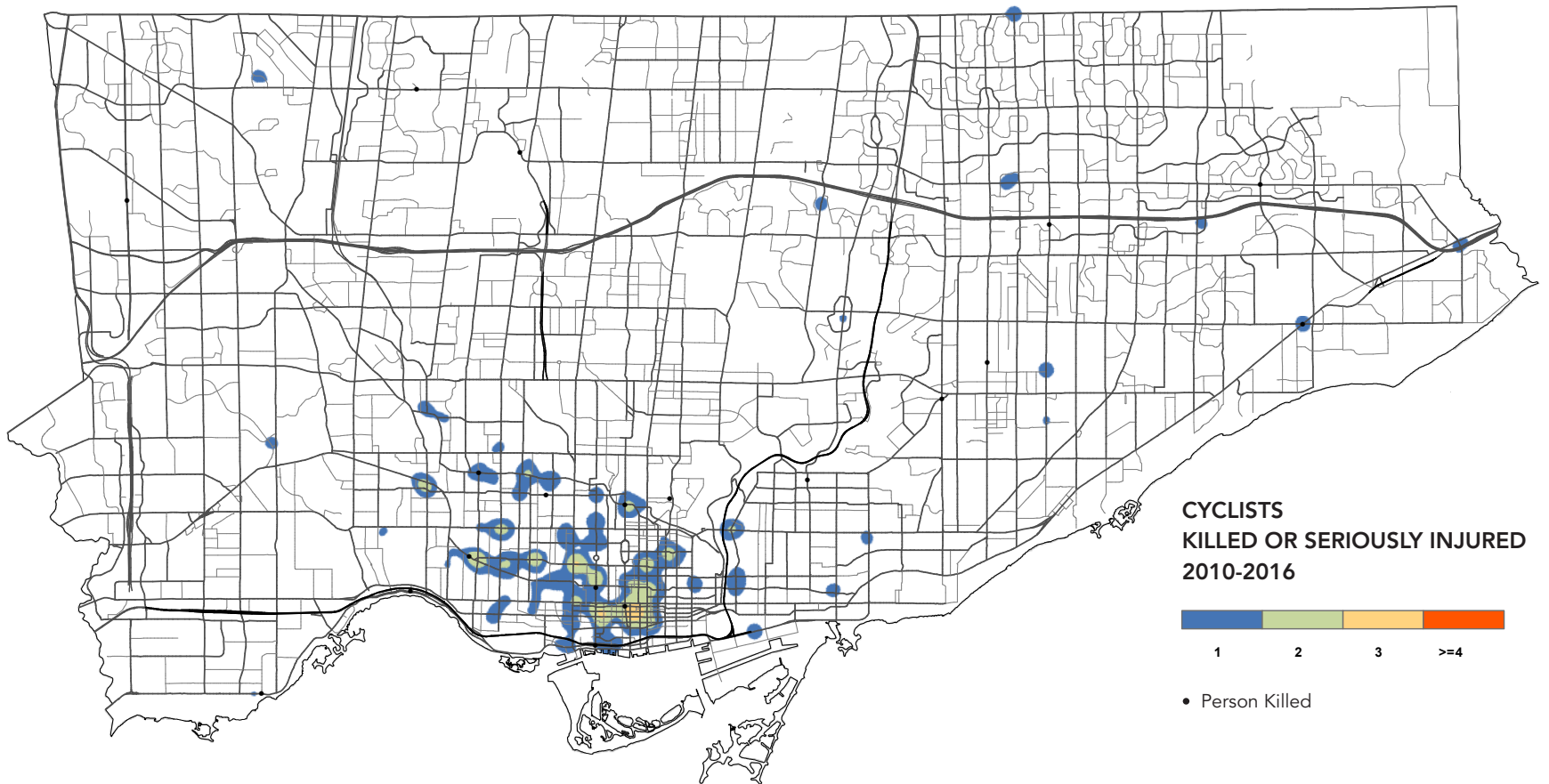
Between 2005 and 2016, there were 539 cyclists killed or seriously injured in a collision with a motor vehicle.

In depth reviews will be conducted at locations exhibiting high killed or serious injury collisions involving cyclists along existing cycle tracks to see if there are any opportunities to enhance the existing cycling facilitates to improve safety. Such initiatives include the implementation of cyclist signals, bike boxes, advance green for cyclists and police enforcement targeting behaviours that impact cyclist safety such as dooring and improper use of bicycle lanes.



Cyclists Killed in Toronto, January 1, 2005 - December 23, 2016

*Cyclists Seriously Injured in Toronto, January 1, 2005 - June 1, 2016



EXISTING SAFETY MEASURES

GREEN CYCLING AREAS

Green pavement markings installed at or near intersections highlight potential conflict areas between cyclists and motor vehicles.

TORONTO CYCLISTS HANDBOOK

Produced by Cycle Toronto, this handbook teaches inexperienced cyclists about traffic laws and safe cycling habits.

HELMET SAFETY EDUCATION VIDEOS

Videos provide information about the importance of wearing helmets in preventing head injuries in cyclists.

SPACE TO CYCLE CAMPAIGN

Led by the Toronto Police Service, this educational campaign targets motorist and cyclist behaviour that puts cyclists at risk.

"STAY SAFE, STAY BACK" CAMPAIGN

This campaign promotes safer interaction between cyclists and large trucks.

ENHANCED EXISTING SAFETY MEASURES

The following existing safety measures will be enhanced, and are described on the next few pages:

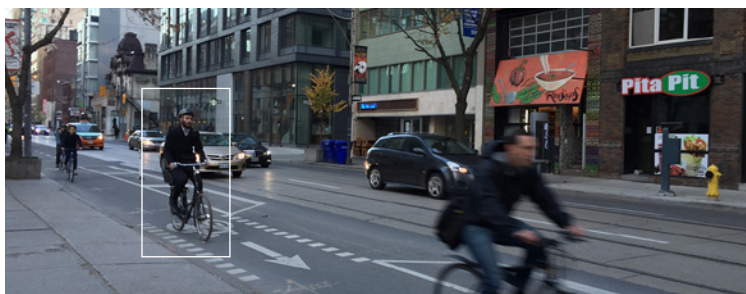
- Automated Cyclist Detection
- Bike Boxes
- Cycle Tracks
- Signalized Crossings for Cyclists

NEW/ENHANCED SAFETY MEASURES



CYCLE TRACKS

In June 2016, Council approved the Ten Year Cycling Network Plan that proposes a significant expansion in the Cycle Track network. Cycle tracks are lanes for bicycles that are adjacent to the roadway, but separated from vehicular traffic. Cycle tracks help improve cyclist safety by providing greater separation from cars than traditional bike lanes.



AUTOMATED CYCLIST DETECTION

These technologies can be used to optimize intersection operations and improve safety by reducing the risk of a cyclist being unable to clear an intersection before conflicting vehicular traffic proceeds.



ADVANCE GREEN FOR CYCLISTS

This feature will allow cyclists to proceed through an intersection a few seconds earlier than vehicles in order to increase drivers' visibility of cyclists and reduce the likelihood of bicycle collisions with left turning vehicles.

SIGNALIZED CROSSINGS FOR CYCLISTS

A program will be developed to expand the use of dedicated traffic signals to facilitate cyclist crossings at intersections and across roadways. Bicycle signals improve safety for cyclists and provide direct connections for off-street and on-street cycling infrastructure.

ENHANCED CYCLING FACILITIES

The Ten Year Cycling Network Plan proposes new dedicated and connected cycling facilities across the city. Additional enhancements such as pavement markings, signs and bollards will be made to existing cycling routes and facilities. Together, the improvements will provide greater guidance and protection for cyclists from vehicular traffic.

NEW/ENHANCED SAFETY MEASURES



BIKE BOXES

Bike boxes are used to designate space for cyclists to wait in front of cars at a red light and to provide the cyclist the opportunity to proceed first at a green light. Bike boxes make cyclists more visible and less likely to be stuck squeezing around a right turning vehicle.

ENHANCED ENFORCEMENT STRATEGIES

Police enforcement will focus on driver behaviours that impact cyclist safety such as dooring and improper use of bicycle lanes on major cycling corridors and intersections. Enforcement efforts will also focus on cyclist infractions to improve understanding and compliance with traffic laws.

EDUCATION AND AWARENESS INITIATIVES

A communications strategy including public education materials dedicated to promoting safe cycling and the safe interaction between cyclists and motorists will be developed.

