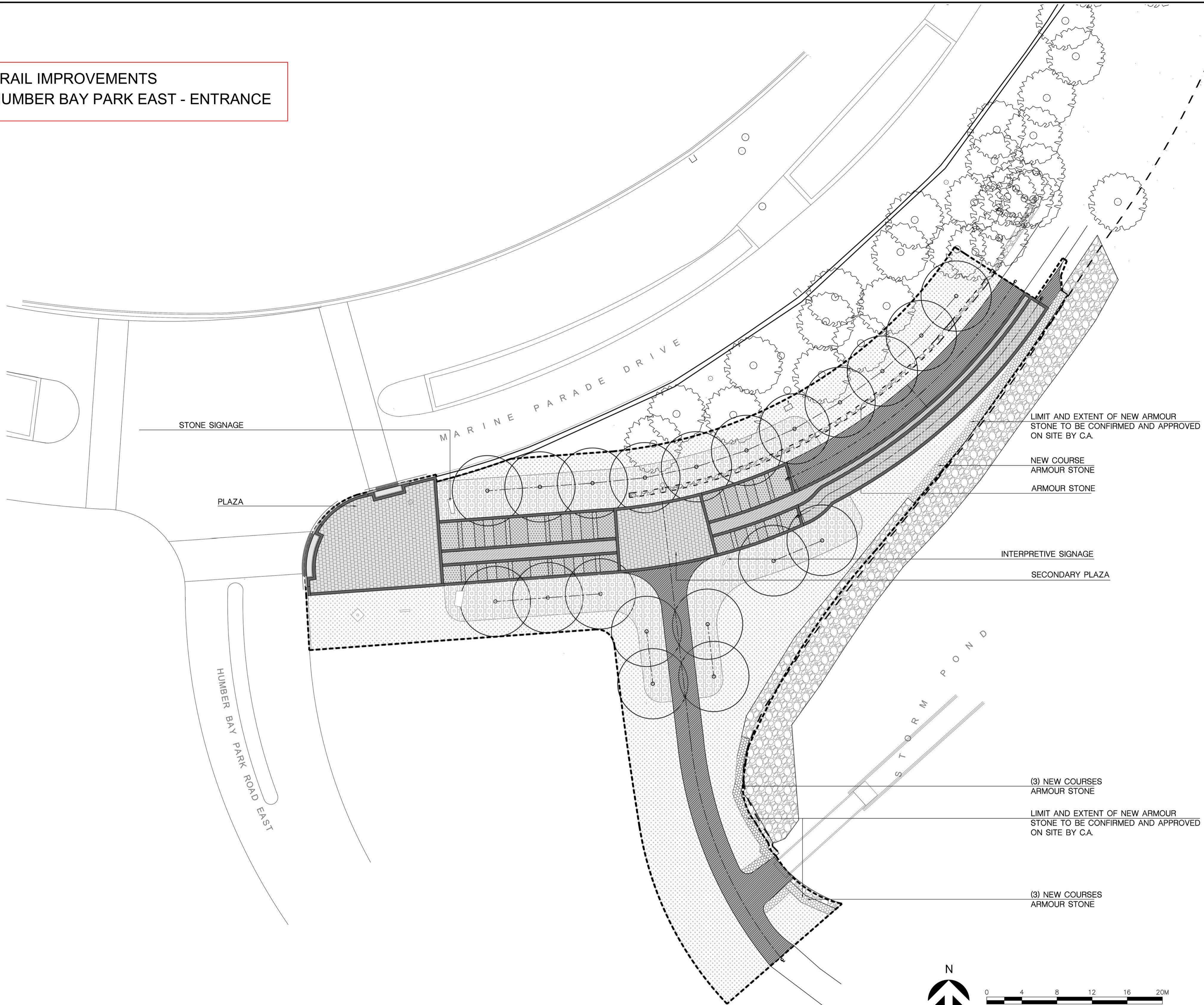


TRAIL IMPROVEMENTS  
HUMBER BAY PARK EAST - ENTRANCE



STONE SIGNAGE

PLAZA

MARINE PARADE DRIVE

HUMBER BAY PARK ROAD EAST

STORM POND

LIMIT AND EXTENT OF NEW ARMOUR STONE TO BE CONFIRMED AND APPROVED ON SITE BY C.A.

NEW COURSE ARMOUR STONE

ARMOUR STONE

INTERPRETIVE SIGNAGE

SECONDARY PLAZA

(3) NEW COURSES ARMOUR STONE

LIMIT AND EXTENT OF NEW ARMOUR STONE TO BE CONFIRMED AND APPROVED ON SITE BY C.A.

(3) NEW COURSES ARMOUR STONE

