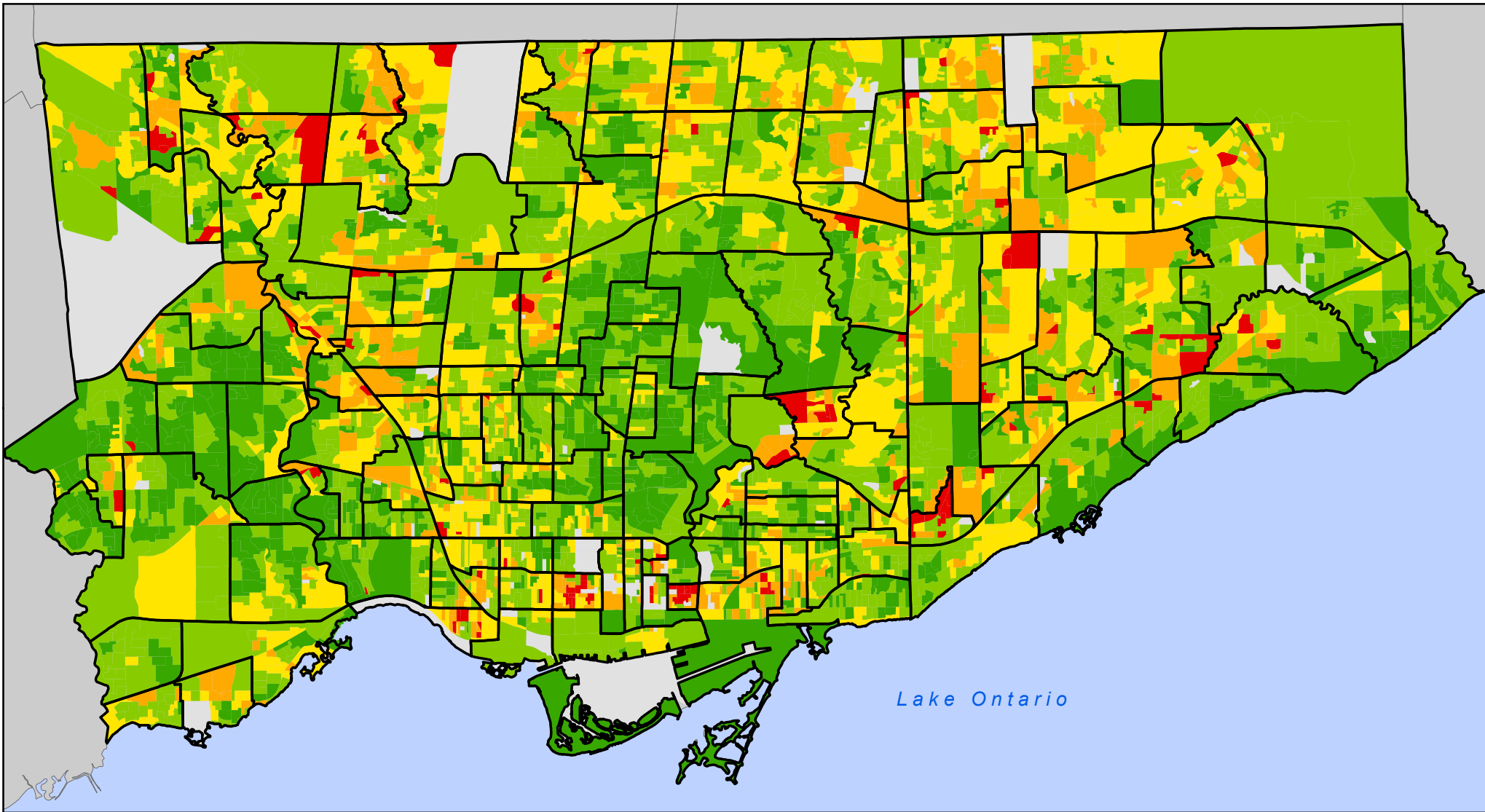


Economic Family Low-Income Cut-Off Rates, 2006

by Dissemination Area



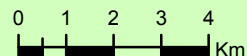
Legend

Economic Family LICO Rate

- 0% - 7%
- 8% - 18%
- 19% - 31%
- 32% - 49%
- 50% - 95%

Neighbourhood Boundary

No data or data suppression



Source: Statistics Canada, Census 2006; City of Toronto.

Copyright (c) 2008 City of Toronto. All Rights Reserved.

Published: June 2008

Prepared by: Social Policy Analysis & Research

Contact: spar@toronto.ca

Notes: Distribution is by natural breaks using LICO rates, excluding empty DAs. Rate is Before Tax.