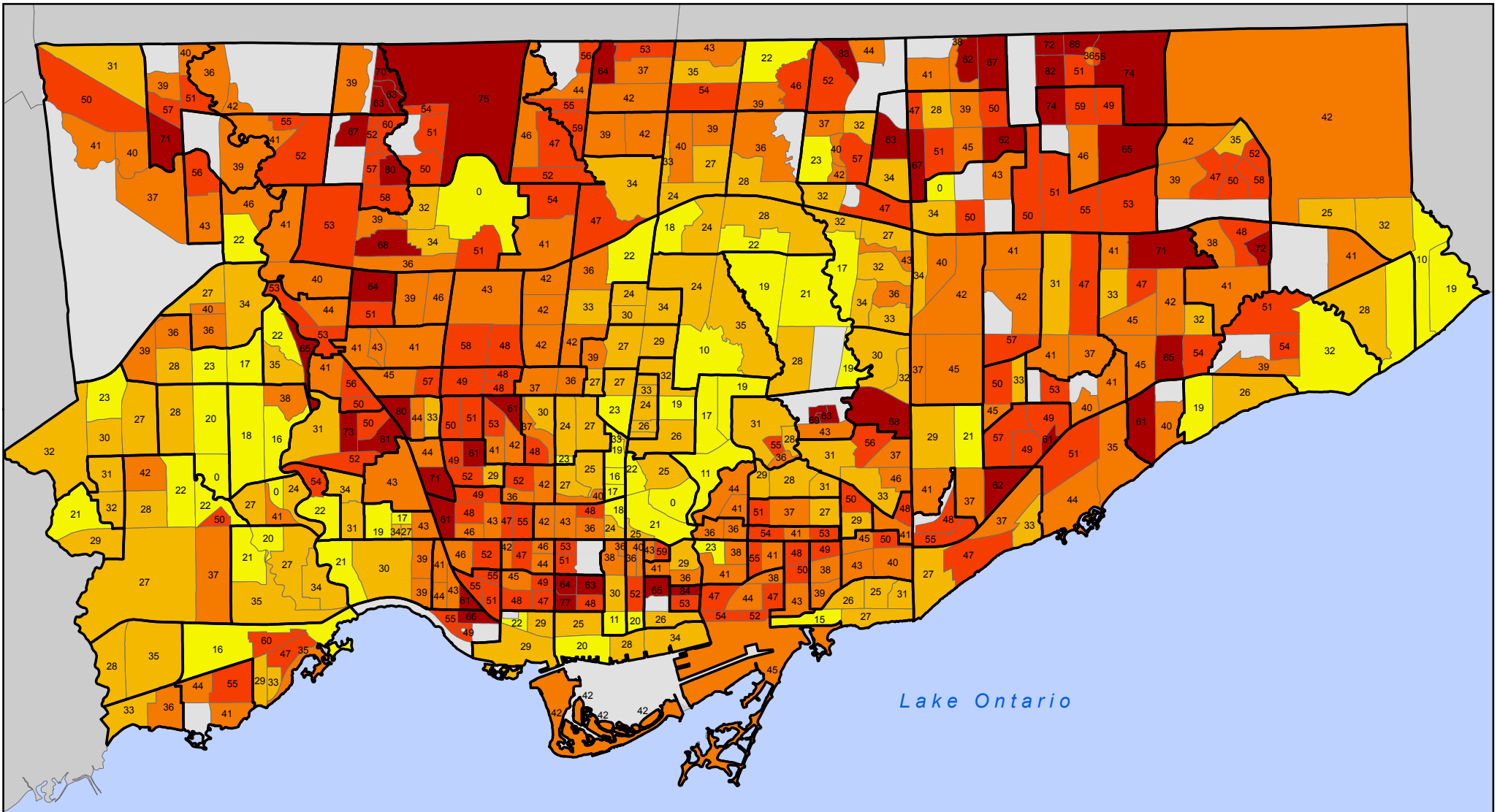


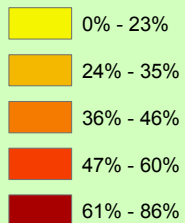
Low-Income Cut-Off Rate for Single Adults, 2006

by Census Tract



Legend

LICO rate (%)

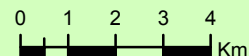


Neighbourhood Boundary

No data or data suppression

X LICO Rate

Notes: Rate is for Total Persons 15 Years and Over Not in Economic Families. Rate is Before Tax.



Source: Statistics Canada, Census 2006; City of Toronto.

Copyright (c) 2008 City of Toronto. All Rights Reserved.
 Published: May 2008
 Prepared by: Social Policy Analysis & Research
 Contact: spar@toronto.ca