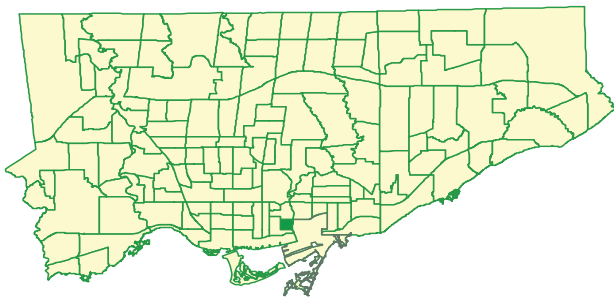
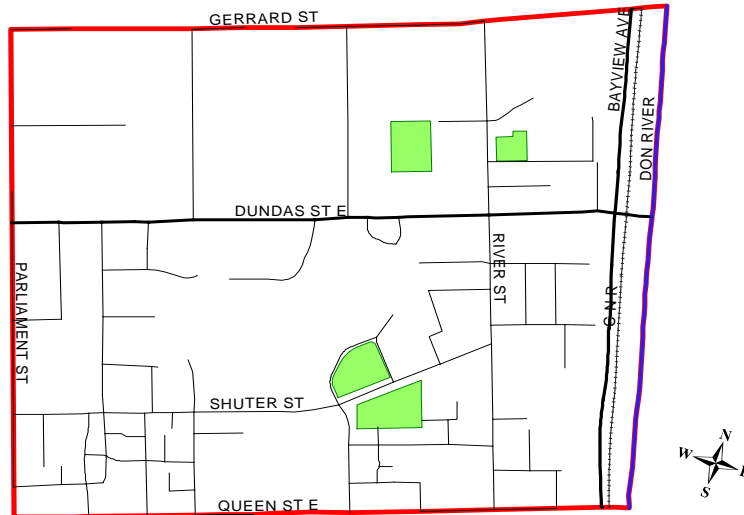


72. Regent Park

(Note: These are initial neighbourhood estimates and are subject to change.)



TSNS 2020 Snapshot

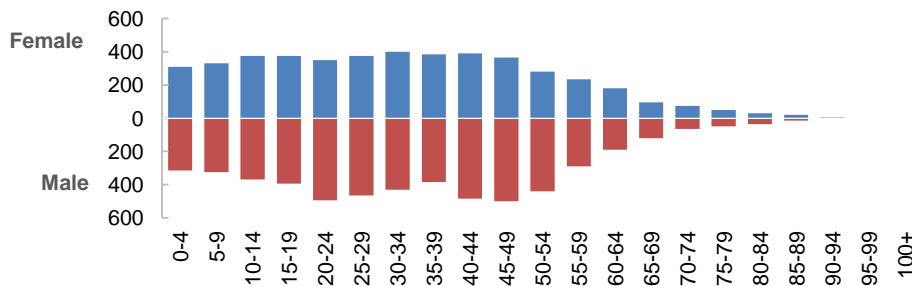
NEI Score 29.8

New NIA

Unemployment	15.8	Community Space	36.6
Low Income	49.8	Walk Score	88.0
Social Assistance	24.9	Healthier Food	9.7
HS Graduation	1	Green Space	34.4
Marginalization	3.0	Mortality	403.9
Post Secondary	61.1	Mental Health	58.0
Voting	52.9	Hospitalizations	496.5
		Diabetes	11.4

Population

Total Population
10,007



Female
46%
Male
54%

Children
0-14 years
2,035 (20%)
City Rate: 15%

Youth
15-24 years
1,615 (16%)
City Rate: 13%

Working Age
25-54 years
4,910 (49%)
City Rate: 46%

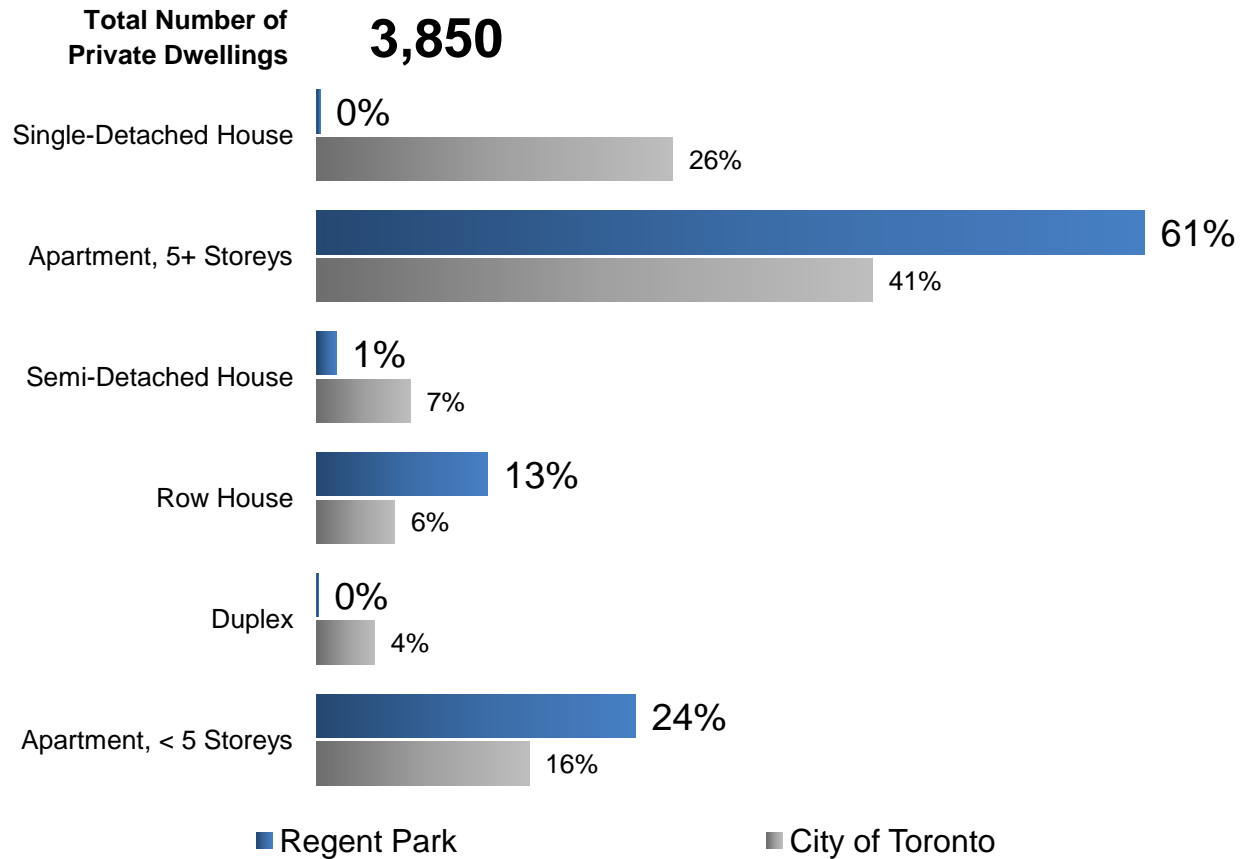
Pre-Retirement
55-64 years
885 (9%)
City Rate: 12%

Seniors
65+ years
565 (6%)
City Rate: 14%

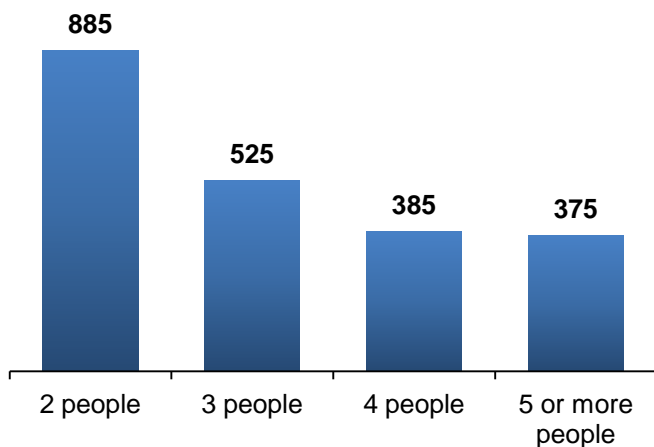
72. Regent Park

(Note: These are initial neighbourhood estimates and are subject to change.)

Private Dwellings by Structure Type



Number of Census Families by Size of Family



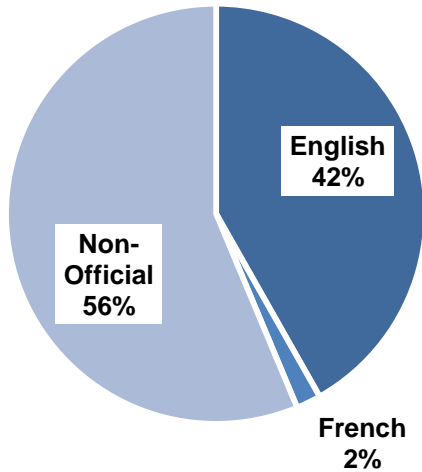
Number of People by Living Arrangements

Living with family	7,070	76% of population
Living with other relatives	240	3% of population
Living with non-relatives only	475	5% of population
Living alone	1,540	17% of population
Seniors 65+ living alone	235	43% of seniors 65+

72. Regent Park

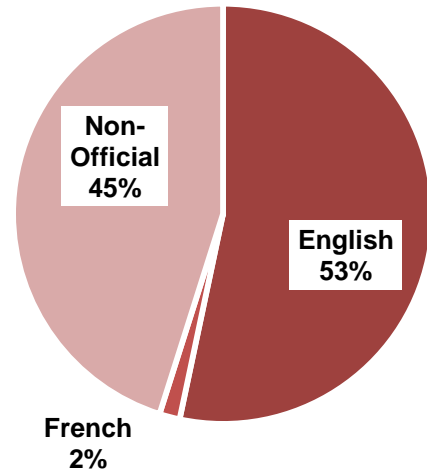
(Note: These are initial neighbourhood estimates and are subject to change.)

Mother Tongue (Single-Response)



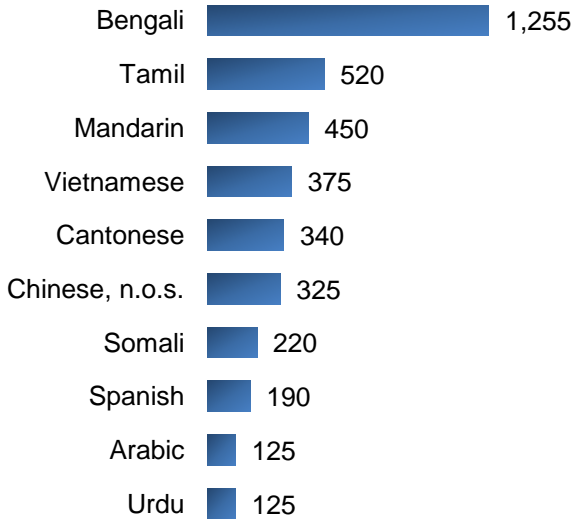
City rate for non-official mother tongue: **46%**

Home Language (Single-Response)

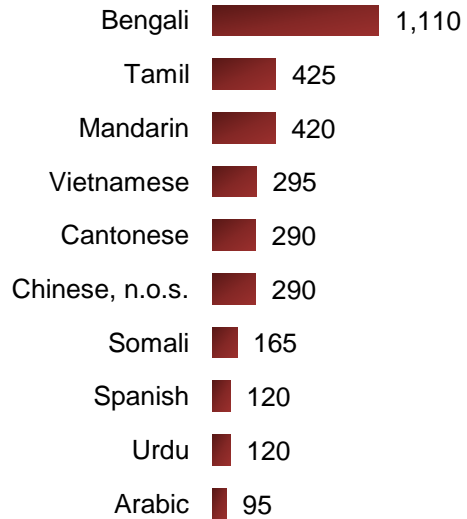


City rate for non-official home language: **30%**

Top-10 Non-Official Mother Tongue Languages



Top-10 Non-Official Home Languages



Note: "n.i.e." = not included elsewhere; "n.o.s." = not otherwise specified

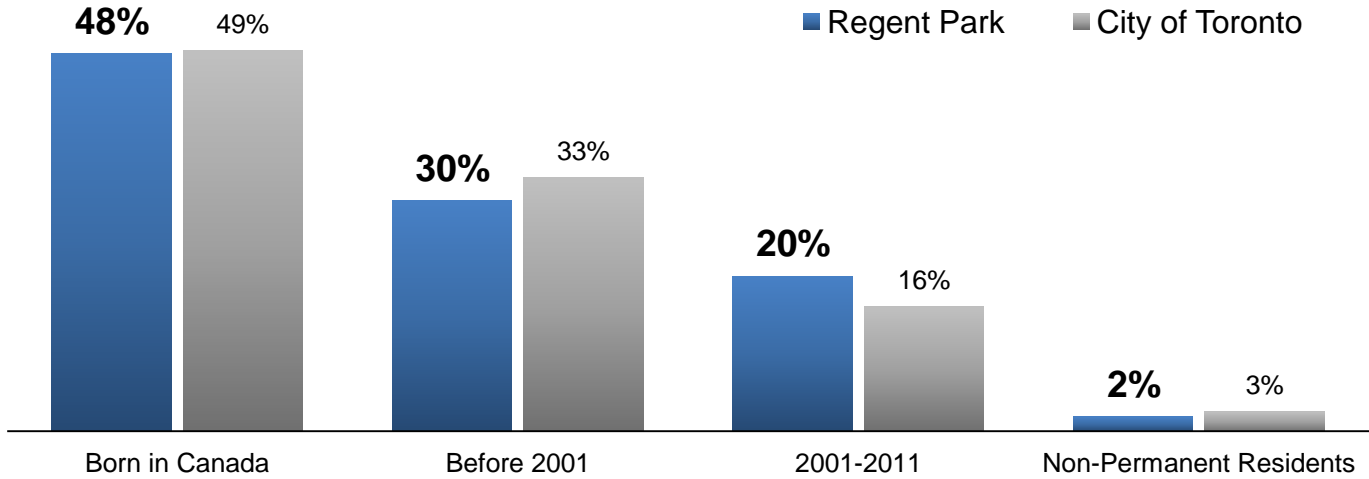
Knowledge of Official Languages



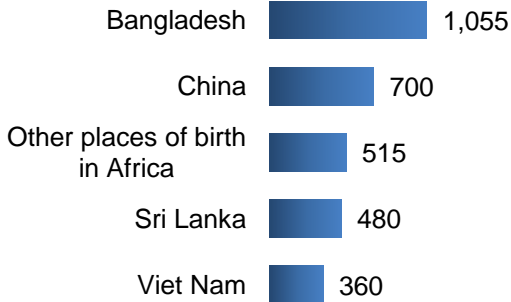
72. Regent Park

(Note: These are initial neighbourhood estimates and are subject to change.)

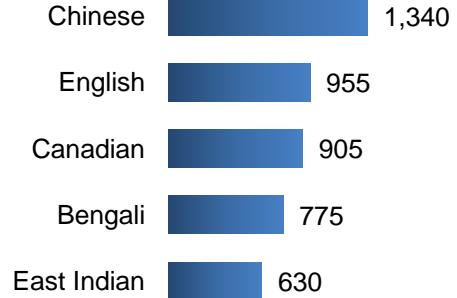
Period of Immigration



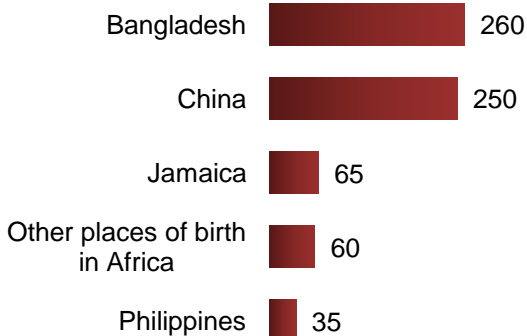
Top-5 Birth Country for All Immigrants



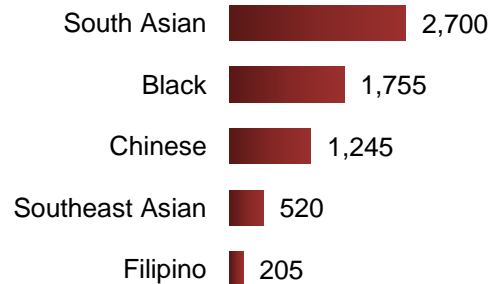
Top-5 Ethnic Origins



Top-5 Birth Country for Recent Immigrants (2006-2011)



Top-5 Visible Minority Group

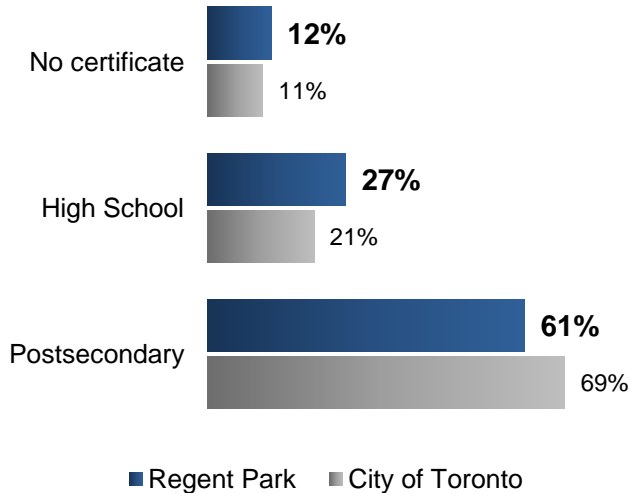


Visible Minority as Percentage of Pop. **75%** Overall City of Toronto Rate **49%**

72. Regent Park

(Note: These are initial neighbourhood estimates and are subject to change.)

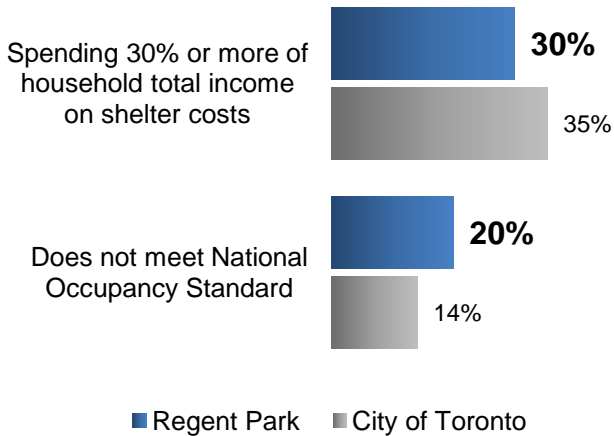
Highest Educational Attainment for Pop Age 25-64 Yrs



Labour Force Status

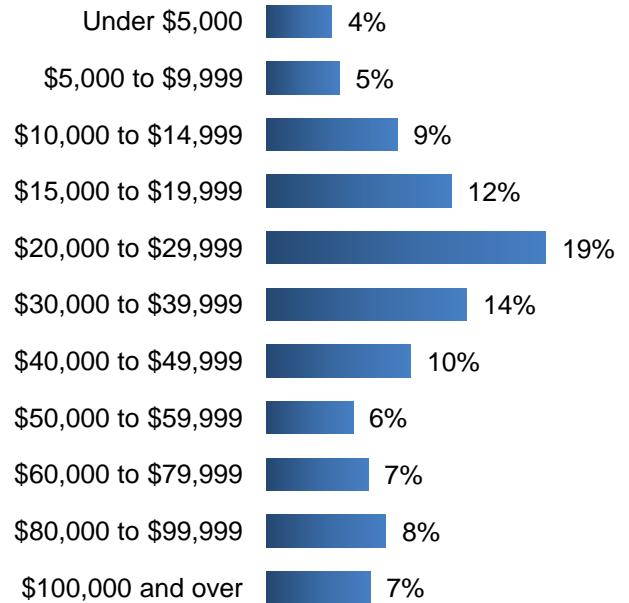
Total Population 15+ Years	7,280	
In Labour Force	4,090	
Participation Rate	56%	64% City Rate
Employment Rate	47%	58% City Rate
Unemployment Rate	16%	9% City Rate

Housing Affordability and Suitability



After-Tax Household Income

(Percentage of Households)



Notes on Data Quality:

Neighbourhood data are preliminary estimates and are subject to change. This profile does not compare 2011 NHS results with those from earlier Census releases. This is because NHS data was collected differently than data from the 2006 and are not directly comparable.

Percent of Population in Low-Income (LIM-AT) **46%**

City Rate: 19%