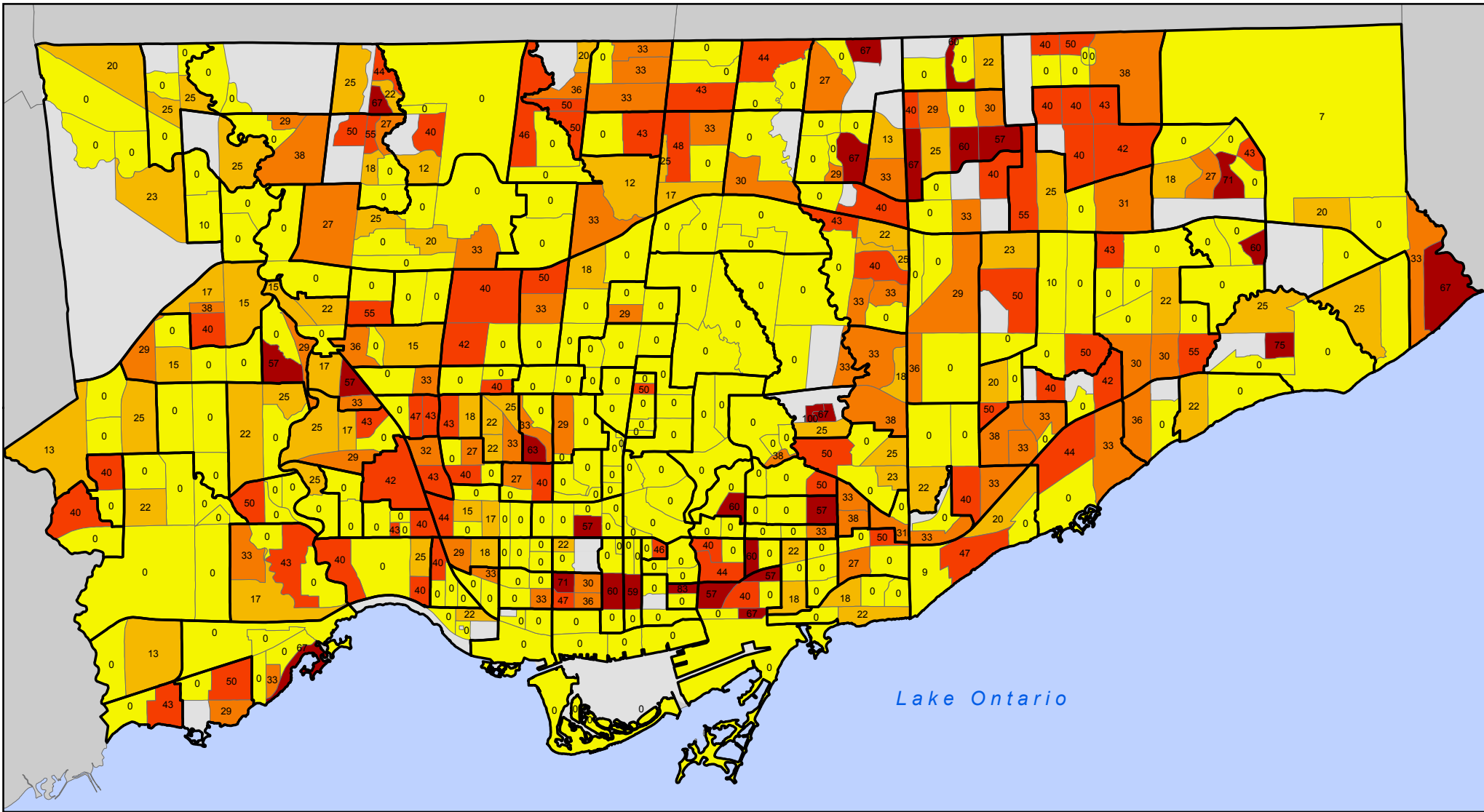


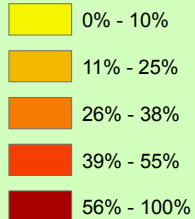
Low-Income Cut-Off Rate for Single Fathers, 2006

by Census Tract



Legend

LICO rate (%)



- Neighbourhood Boundary
- No data or data suppression
- X LICO Rate

Notes: Rate is for Male Lone-Parent Economic Families. Rate is Before Tax.



Source: Statistics Canada, Census 2006; City of Toronto.

Copyright (c) 2008 City of Toronto. All Rights Reserved.
 Published: May 2008
 Prepared by: Social Policy Analysis & Research
 Contact: spar@toronto.ca