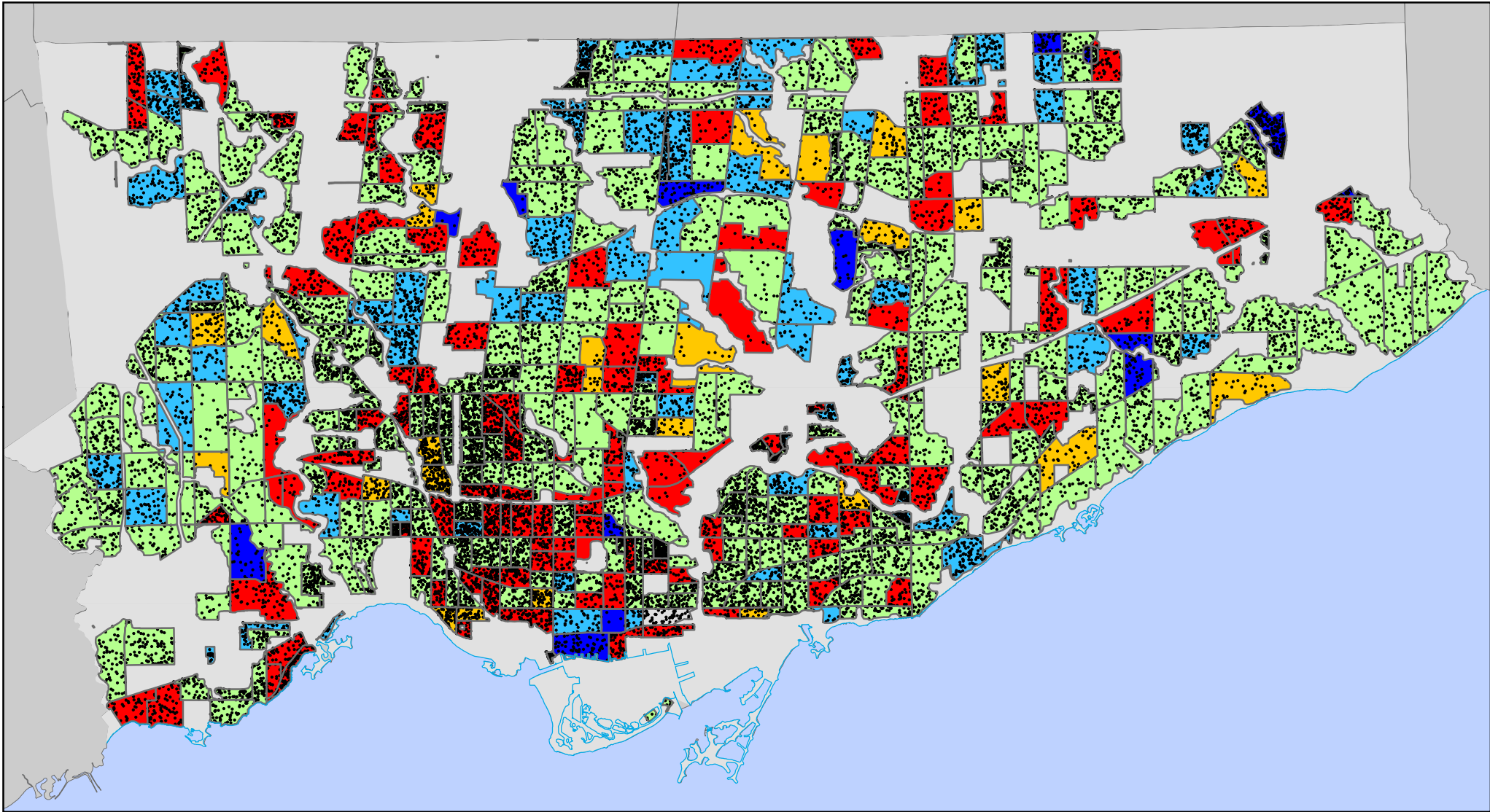


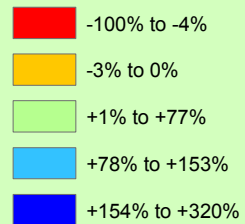
Persons Who Work at No Fixed Address

By Census Tract



Legend

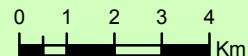
Change in Percentage 2001-2006



Light Grey Box: Primarily Non-residential Area

Dot Density of Workers with No Fixed Address (2006)

Black Dot: 1 dot = 5 persons



Source: Statistics Canada, Census 2006; City of Toronto.

Copyright (c) 2008 City of Toronto. All Rights Reserved.

Published: March 2008

Prepared by: Social Policy Analysis & Research

Contact: spar@toronto.ca

Notes: Classification by modified natural breaks