

porter



Other Downtown / Waterfront Airports

- ✓ Porter has reviewed operations at a number of downtown and/ or waterfront airports around the world
- ✓ All allow jets
- ✓ Most of these airports have some form of noise restriction
- ✓ NEF25 contour imposed at BBTCA is most restrictive compared to other airports which allow larger aircraft with higher total noise output

London City Airport, UK (LCY)

porter

- ✓ Opened 1987
- ✓ Jets permitted
- ✓ Max 94.5 average EPNdB for any aircraft, based on ICAO Annex 16 Vol I, ch. 3
- ✓ Runway has been extended in phases
- ✓ Served over 3m passengers in 2012
- ✓ Docklands Light Railway link since 2005
- ✓ Airports growth has accompanied plans to rejuvenate East-end London/ docklands area
- ✓ Hours of operation
 - ✓ 06:30 to 22:00 Mon-Fri
 - ✓ 06:30 to 12:30 Sat
 - ✓ 12:30 to 22:00 Sun



RWY	TORA	TODA	ASDA	LDA	RESA
09	3,933'	4,327'	4,327'	4,327'	394'
27	3,933'	4,533'	4,327'	4,327'	623'

	Movements	Passengers
2012	70,781	3,016,664

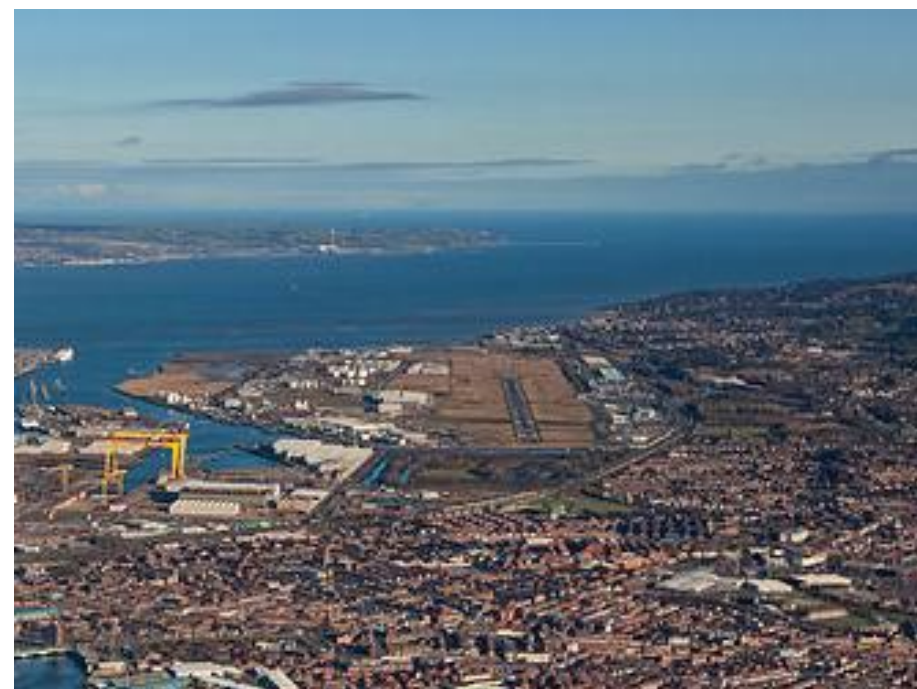
Note: GA accounted for 0.6% of all movements

Source: Airport

Belfast City Airport, UK (BHD)

porter

- ✓ Opened 1938, commercial ops began in 1983
- ✓ Jets permitted
- ✓ Aircraft restricted to ICAO Ch 3 (equivalent average EPNdB of 95.3)
- ✓ Served over 2.2m passengers in 2012,
 - ✓ Approx 40% of scheduled domestic air traffic to/from Northern Ireland
 - ✓ Core catchment: 54% of Northern Ireland pop.
 - ✓ Business users are 65% of market
- ✓ Signatory to UK Sustainable Aviation Strategy
- ✓ Noise abatement procedures for all flights
- ✓ Movement cap of 48,000 flights annually
- ✓ Hours of operation: 06:30-21:30



RWY	TORA	TODA	ASDA	LDA	RESA
04	6,000'	6,657'	6,000'	5,699'	-
22	5,797'	6,289'	5,797'	5,797'	-

	Movements	Passengers
2012	41,571	2,246,202

Note: GA accounted for 11% of all movements

Source: Airport

Congonhas Airport, São Paulo, Brazil (CGH)

porter

- ✓ Opened 1936
- ✓ Jets permitted
- ✓ Located in the most populated/ economically vibrant part of the country, providing a key competitive advantage to the region
- ✓ Hourly movements cap of 30
- ✓ Approach paths over residential neighborhoods curtailed if possible
- ✓ Noise abatement procedures in effect for all aircraft with a max takeoff weight of 24,000 lb
- ✓ Hours of operation: 06:00-22:30



RWY	TORA	TODA	ASDA	LDA	RESA
17R	6,365'	6,365'	6,365'	5,938'	-
35L	6,365'	6,365'	6,365'	6,168'	-

	Movements	Passengers
2012	213,164	16,775,785

Source: Airport

A Coruña Airport, La Coruña, Spain (LCG)

porter

- ✓ Opened 1963
- ✓ Jets permitted
- ✓ Aircraft restricted to ICAO Ch 3 (equivalent average EPNdB of 95.3)
- ✓ Served over 800,000 passengers in 2012
- ✓ Introduced an environmental management system which enabled ISO 14001 certification in 2001, the third Spanish airport to possess this certification
- ✓ Implementation of noise abatement procedures to alleviate noise impact
- ✓ Hours of Operation: 05:30-23:30



RWY	TORA	TODA	ASDA	LDA	RESA
03	6,358'	6,850'	6,358'	6,358'	295'
21	6,358'	6,850'	6,358'	6,358'	-

	Movements	Passengers
2012	16,693	845,452

Note: GA accounted for 11% of all movements

Source: Airport

Orange County Airport, Santa Ana, California (SNA) porter

- ✓ Opened post-WW2
- ✓ Served over 8m passengers in 2010
- ✓ Jets permitted
- ✓ Noise limits at each noise measuring station along approach and departure paths. Large aircraft (e.g. Boeing 757 with average EPNdB of 92.8) are permitted to operate
- ✓ Access Plan restricts movements by carrier and type
- ✓ Noise abatement procedures for all aircraft
- ✓ Overnight curfew in effect although delays caused by weather or air traffic control are exempt
- ✓ Hours of operation: 07:00-22:00



RWY	TORA	TODA	ASDA	LDA	RESA
01L	5,701		5,701	5,701	196'+
19R	5,701		5,701	5,701	984'

	Movements	Passengers
2012	225,688	8,857,944

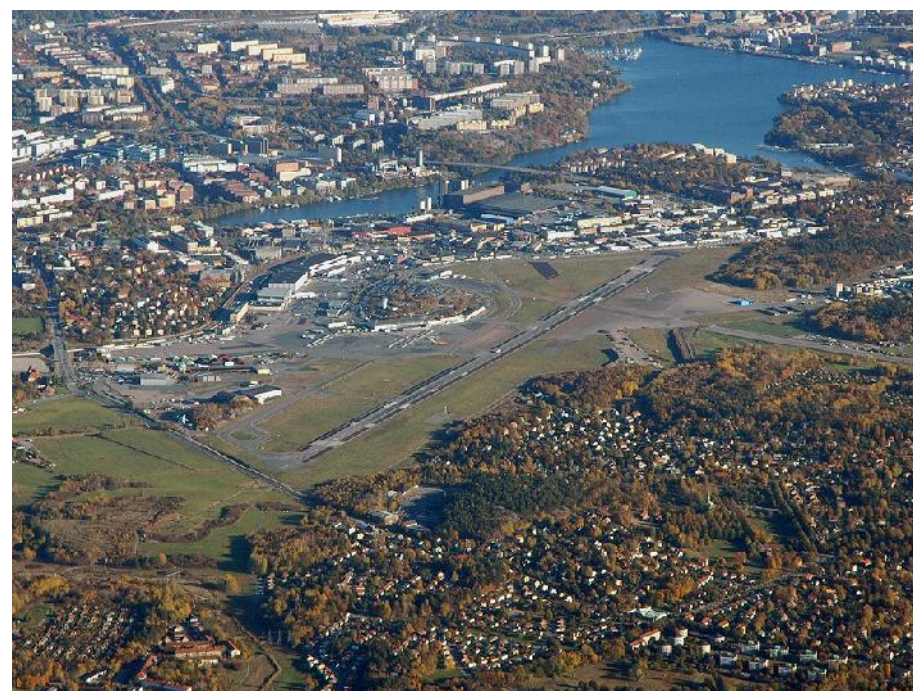
Note: GA accounted for 11% of all movements

Source: Airport

Stockholm Bromma Airport, Sweden (BMA)

porter

- ✓ Opened 1936
- ✓ Jets permitted
- ✓ Max 89 average EPNdB for any aircraft, based on ICAO Annex 16 Vol I, ch. 3
- ✓ Environmental standards are particularly stringent, with only the quietest, most environmentally friendly aircraft permitted to land at Bromma
- ✓ Airport among first in the world to be certified to the highest level of Airport Carbon Accreditation (which follows the international Greenhouse Gas Protocol)
- ✓ Hours of operation: 06:00-21:00



RWY	TORA	TODA	ASDA	LDA	RESA
12	5,800'	5,800'	5,800'	5,472'	-
30	5,738'	5,738'	5,738'	5,472'	-

	Movements	Passengers
2012	47,300	2,300,000

Note: GA accounted for 13% of all movements

Source: Airport

Santos Dumont Airport, Rio de Janeiro, Brazil (SDU)

porter

- ✓ First paved runway opened 1934
- ✓ Jets permitted
- ✓ New infrastructure in place for Pan Am games in 2007 features 8m pax / year capacity terminal building
- ✓ Stringent environmental restrictions in place since 2009 from the Instituto Estadual Environment (INEA), the county's environmental regulator
- ✓ Flight paths over residential neighborhoods curtailed in so far as possible
- ✓ Approaches over residential areas are permitted only when specific wind conditions that amount to 30% of total operations so require
- ✓ Hours operation: 06:00-22:59



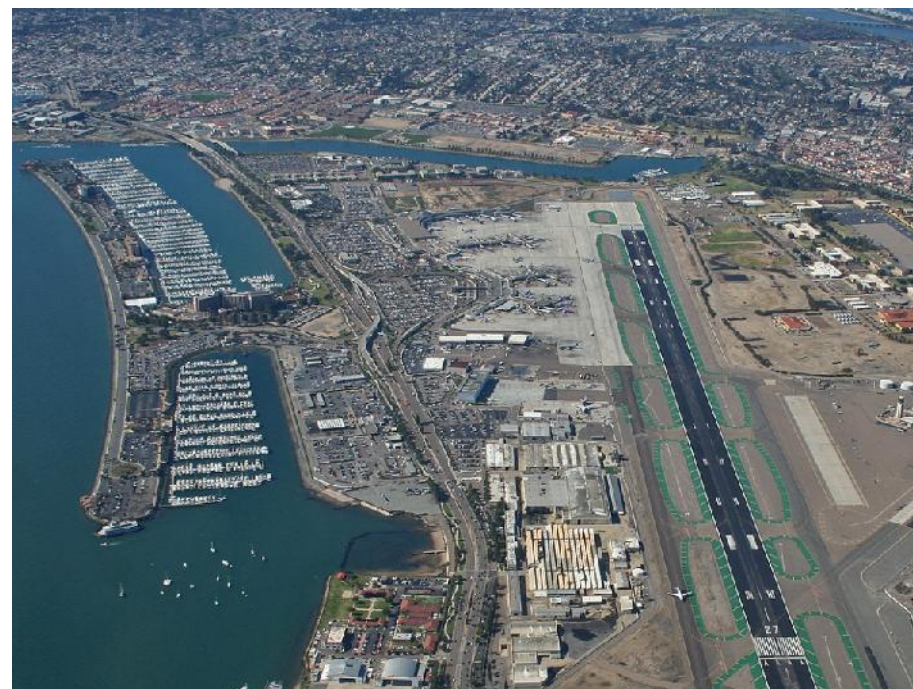
RWY	TORA	TODA	ASDA	LDA	RESA
02R	4,341	4,341	4,341	4,341	-
20L	4,341	4,341	4,341	4,341	-

	Movements	Passengers
2012	135,373	9,002,863

Source: Airport

San Diego International Airport, California (SAN) porter

- ✓ Opened 1928
- ✓ Jets permitted
- ✓ Max 104 average EPNdB for any aircraft, based on ICAO Annex 16 Vol I, ch. 3
- ✓ Airport integrated into downtown/ waterfront including multi-use recreational pathways and intermodal transportation network
- ✓ A series of measures being implemented to grow the airport within its current footprint with attention to surrounding environment
- ✓ No cap on hourly movements
- ✓ Hours of operation: 06:30-23:30



RWY	TORA	TODA	ASDA	LDA	RESA
09	9,401	9,401	8,280	7,580	984'
27	9,401	9,401	9,401	7,591	Aprox 375'
		Movements	Passengers		
2012		186,251	17,250,265		

Source: Airport/ FAA

Thank you
Merci

porter

Billy Bishop Toronto City Airport
Toronto, Ontario
Canada M5V 1A1
Tel: (416) 203.8100
Fax (416) 203.8150
www.flyporter.com
