

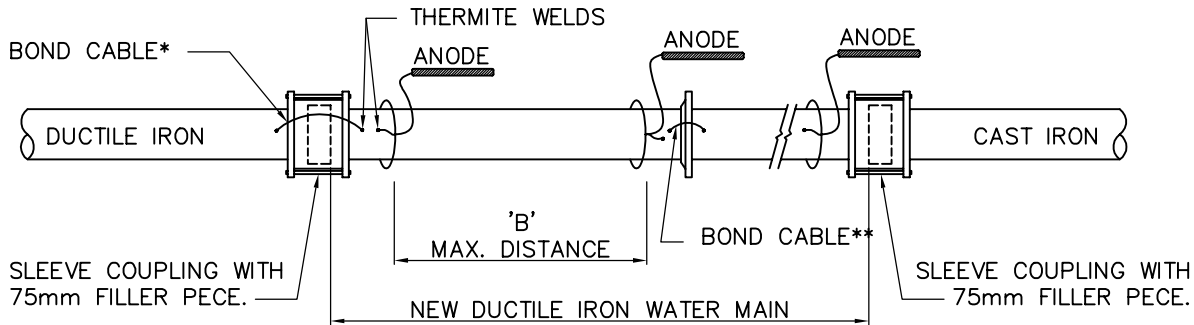
# A. WATER MAIN REPAIRS AND ADJUSTMENTS:

1. LENGTH OF NEW MAIN IS LESS THAN DISTANCE 'A'

INSTALL ONLY ONE MAGNESIUM ANODE TYPE 32 AT MID-POINT OF NEW MAIN.

2. LENGTH OF NEW MAIN IS MORE THAN DISTANCE 'A'

INSTALL ONE MAGNESIUM ANODE TYPE 32 AT EACH END OF NEW SECTION. IF THE LENGTH OF NEW PIPE IS MORE THAN DISTANCE 'B', INSTALL ADDITIONAL ANODES SPACED AT EQUAL INTERVALS NOT FURTHER THAN DISTANCE 'B' APART.



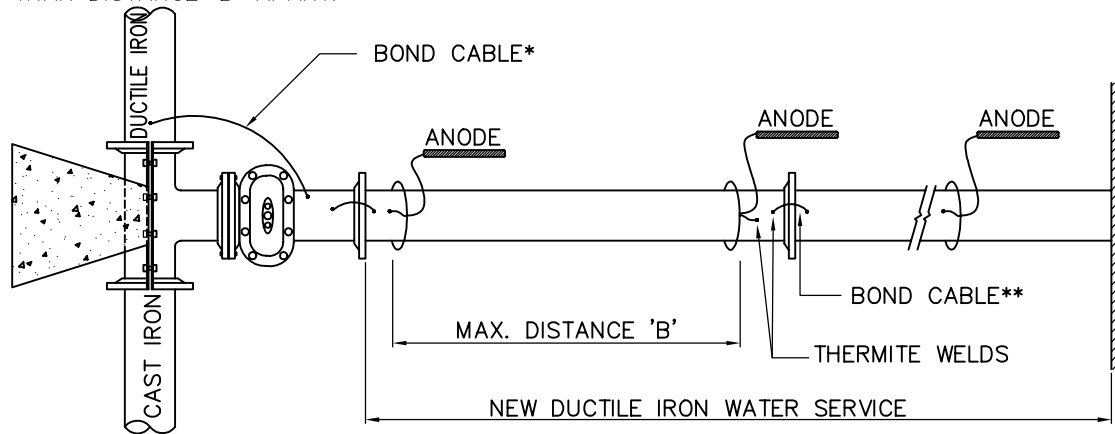
# B. DUCTILE IRON WATER SERVICES:

1. LENGTH OF NEW SERVICE IS LESS THAN DISTANCE 'A'

INSTALL ONLY ONE MAGNESIUM ANODE TYPE 32 ON THE NEW SERVICE CLOSE TO THE BRANCH.

2. LENGTH OF NEW SERVICE IS MORE THAN DISTANCE 'A'

INSTALL MAGNESIUM ANODE TYPE 32 AT BRANCH AND AT STREET LINE. IF THE LENGTH OF NEW SERVICE IS MORE THAN DISTANCE 'B', INSTALL ADDITIONAL ANODES SPACED AT EQUAL INTERVALS NOT FURTHER THAN DISTANCE 'B' APART.



SPACING SCHEDULE FOR INSTALLATION OF MAGNESIUM ANODES ON UNCOATED DUCTILE IRON PIPES		
NEW PIPE DIAMETER	DISTANCE 'A' ( 1 ANODE ONLY )	DISTANCE 'B' ANODE SPACING
100mm	9 METRES	23 METRES
150mm	6 METRES	15 METRES
200mm	4 METRES	11 METRES
300mm	3 METRES	8 METRES

NOTES:

- 1)\* BOND CABLES ONLY REQUIRED IF BOTH PIPES ARE DUCTILE IRON.
- 2)\*\*ALTERNATIVE ELECTRICAL CONDUCTIVITY COULD BE ACCOMPLISHED BY USING:
  - A) CONDUCTIVITY STRAPS
  - B) CONDUCTIVITY SCREWS
  - C) CONDUCTIVITY WEDGES
- 3) TESTING, SPACING AS PER TS 7.20.04

METRIC  
ALL DIMENSIONS SHOWN HERE ARE IN MILLIMETRES UNLESS OTHERWISE NOTED



**WORKS & EMERGENCY SERVICES**

**TECHNICAL SERVICES DIVISION**  
Engineering Services - Works Facilities & Structures

**CATHODIC PROTECTION ON**  
**SHORT SECTIONS OF DUCTILE IRON WATER MAINS**

SCALE: N.T.S.  
DATE: JANUARY, 2004  
DRAFTING: V. DIDIANO

DRAWING NUMBER:  
**T-1106.06**  
SHEET: 1