

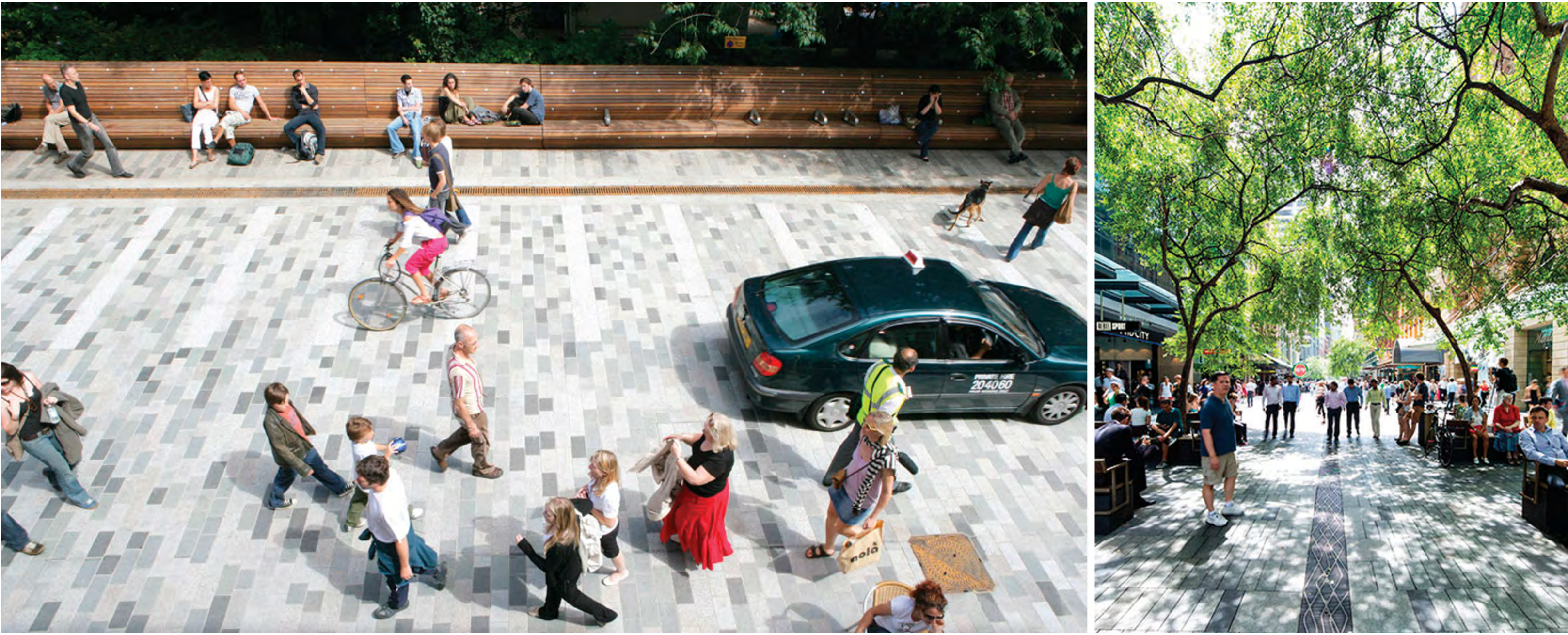


Generating Neighbourhood Transformation

- Integrated Continuum of Care for range of shelter & LTCHS residents
- Create a centre of excellence for aging, and aging in place
- Demonstrating Leadership in sustainable design
- Decanting Strategy for City of Toronto LTCHS Division

New Services in Support of the Entire Community

- Create a new Community Hub offering a wide range of services open throughout the day supporting the full cross-section of community residents, and providing the opportunity for community meetings in the evenings
- Community Hub and staffed areas at grade to provide "eyes on the street" and overlook of the laneways
- transparency of the lower floors to encourage views in and out of active programmed spaces, and engage local residents



Neighbourhood Improvements

- Rebuild lanes to eliminate existing ponding
- Remove deliveries and garbage pick-up from lane
- Provide on-site loading dock, on-site garbage pick-up
- Underground parking on site to remove parking congestion
- Improvements to the public realm



Preserving and Reusing Heritage Assets

- Restoration and preservation of significant heritage assets
- Restoring and reusing derelict buildings, in some cases to provide new community uses accessible to the public
- Embracing the rhythm of the Garden District Heritage Conservation District in the development of a compatible streetscape