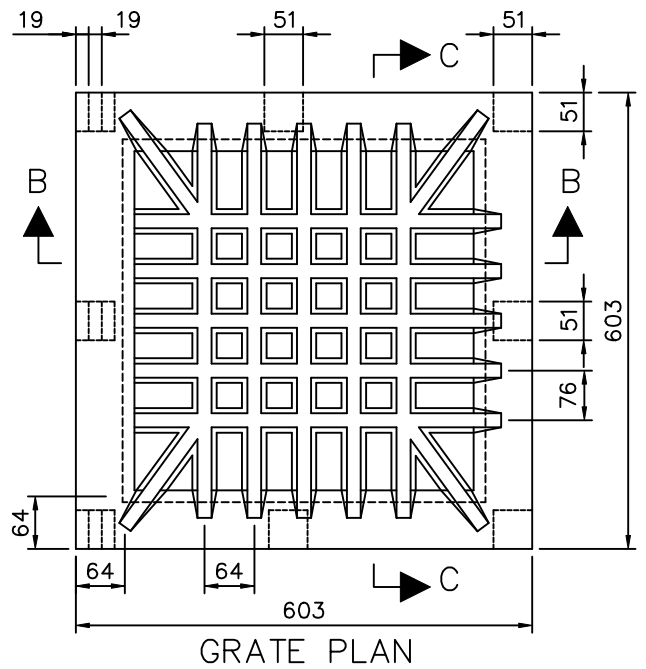
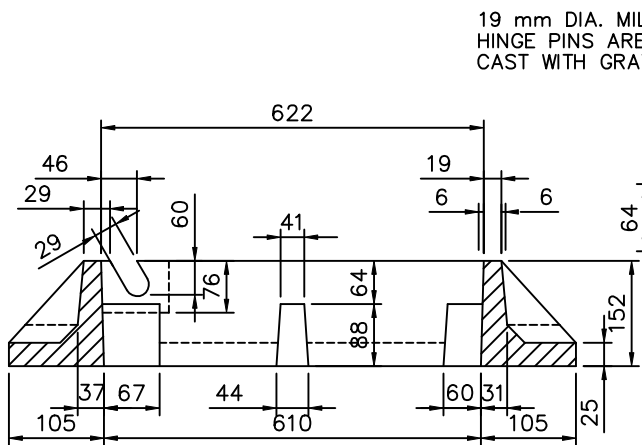


FRAME PLAN

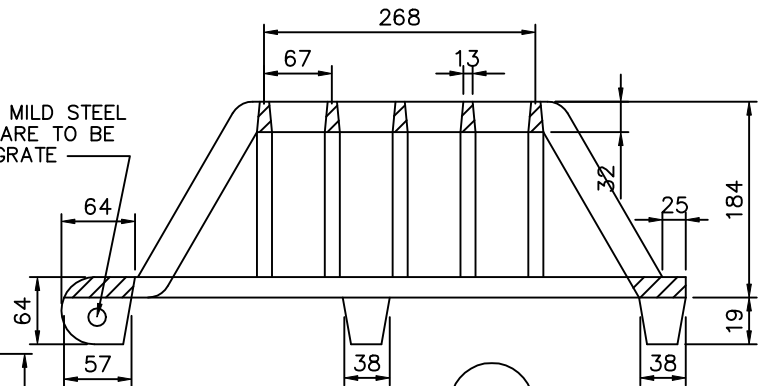


GRATE PLAN

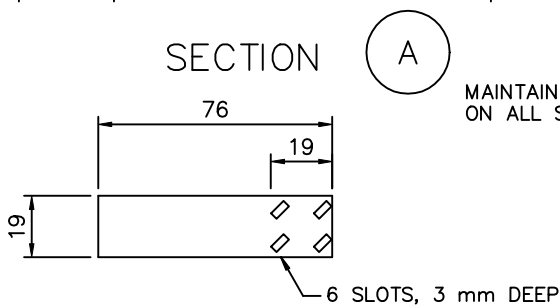


SECTION A

19 mm DIA. MILD STEEL HINGE PINS ARE TO BE CAST WITH GRATE

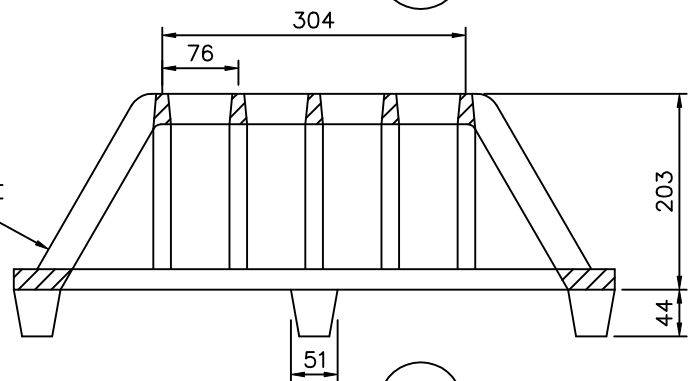


SECTION B



HINGE PINS

MAINTAIN THIS ANGLE ON ALL SIDES



SECTION C

NOTES:

1. CAST IRON TO CONFORM TO A.S.T.M. DESIGNATION A-48 CLASS 30.
2. ALLOWABLE TOLERANCES: DIMENSIONS 300 mm OR LESS ± 3 mm. DIMENSIONS OVER 300 mm UP TO AND INCLUDING 900 mm ± 6 mm.

METRIC
ALL DIMENSIONS SHOWN HERE ARE IN MILLIMETRES UNLESS OTHERWISE NOTED

APPROVED BY

Tom Denes
TOM DENES, P. ENG.
EXECUTIVE DIRECTOR TECHNICAL SERVICES

SCALE

N.T.S.

DATE: JUNE, 2001

REVISED:

STANDARD No.

T-400.03-1



SQUARE PYRAMIDAL CATCH BASIN
FRAME AND COVER