

NOTE:
ALL VOIDS BETWEEN SUPPORT BEAM AND MAIN ARE TO BE FILLED WITH EXCAVATED MATERIAL AND THOROUGHLY COMPACTED

SECTION A

RESTRICTIONS

THE SUPPORT METHODS OUTLINED HEREIN ARE DESIGNED FOR USE ONLY UNDER CITY OF TORONTO WATERMAINS. ANY PIPELINES OR GAS MAINS, ETC. UNDER THE JURISDICTION OF ANY AUTHORITY SHALL BE SUPPORTED AS DIRECTED BY THE APPROPRIATE AUTHORITY.

NOTES RE: BEAM

1. ALL HORIZONTAL SUPPORTING TIMBERS ARE TO BE CARRIED A MINIMUM OF 600 mm INTO SOLID UNDISTURBED GROUND ON EACH SIDE OF THE TRENCH. CARE SHOULD BE TAKEN TO ENSURE THAT THE TIMBERS HAVE FULL SEARING ON THE SILLS.
2. IF THE DISTANCE FROM THE VERTICAL POST TO SOLID UNDISTURBED GROUND EXCEEDS 2.0 m THE TIMBER SIZES SHALL BE CHECKED BY THE PROJECT ENGINEER AND INCREASED IF NECESSARY.

NOTES RE: VERTICAL SUPPORT POSTS

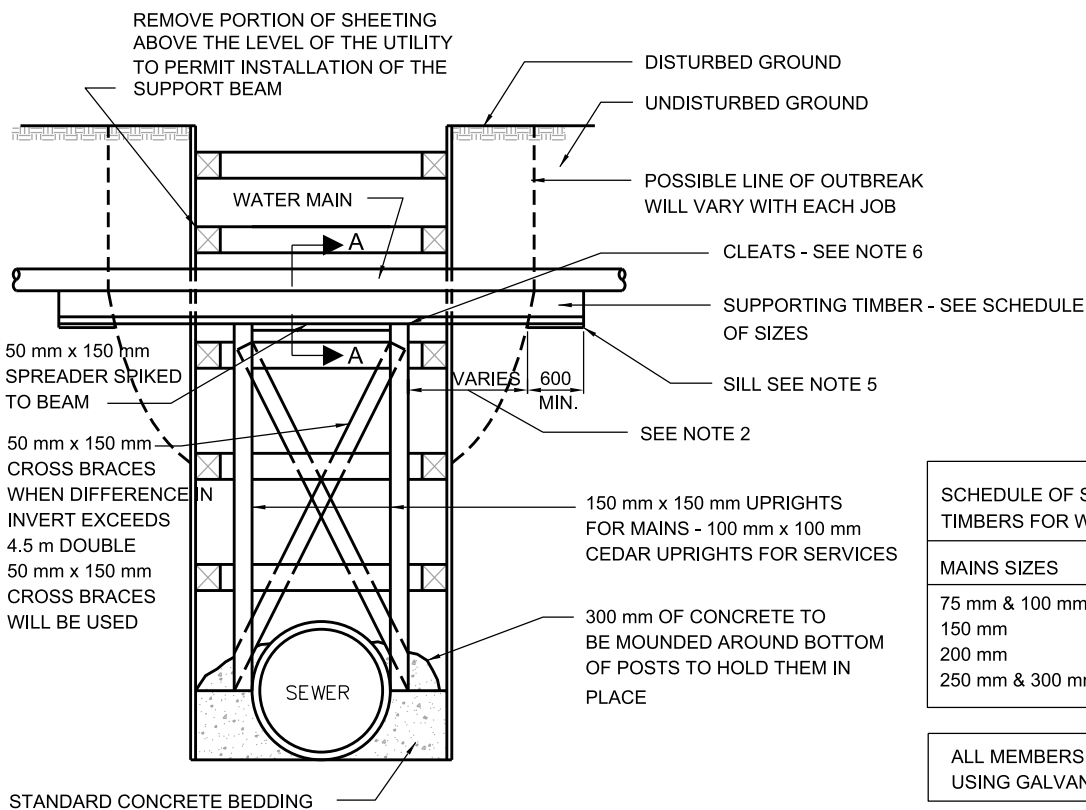
3. VERTICAL POSTS MUST BE INSTALLED UNDER ALL SUPPORTS, I.E. FOR MAINS AND SERVICES. THERE SHALL BE AT LEAST TWO VERTICAL POSTS AND THE SPACING SHALL NEVER EXCEED 2.0 m BETWEEN THEM, UNLESS THE BEAM TIMBER SIZES ARE CHECKED BY THE PROJECT ENGINEER AND INCREASED WHERE NECESSARY.
4. THE VERTICAL POSTS SHALL NEVER REST ON THE NORMAL CONCRETE BEDDING ABOVE THE SPRINGLINE OF THE PIPE.

NOTES RE: SILLS

5. EACH BEARING SILL SHALL BE MADE OF 2 PIECES OF 50 x 300 mm CEDAR - 600 mm LONG OR 15 MPa CONCRETE IF REQUIRED TO ENSURE FULL BEARING.

NOTES RE: CLEATS

6. ALL VERTICAL POSTS SHALL BE SECURELY CLEATED TO THE MAJOR SUPPORT TIMBER.



SCHEDULE OF SIZES OF SUPPORTING TIMBERS FOR WATERMAINS

MAINS SIZES	TIMBER SIZES
75 mm & 100 mm	250 mm x 250 mm
150 mm	250 mm x 250 mm
200 mm	300 mm x 300 mm
250 mm & 300 mm	300 mm x 300 mm

ALL MEMBERS TO BE SPIKED TOGETHER USING GALVANIZED SPIKES

ALL WOOD SHALL BE UNTREATED

IF THE PIPE BEDDING IS NOT CONCRETE THEN A 20 MPa CONCRETE PAD SHALL BE PLACED ON SOLID GROUND AS DIRECTED BY THE ENGINEER TO PROVIDE BEARING FOR THE VERTICAL POSTS.

All dimensions are in millimetres unless otherwise shown.



ENGINEERING AND CONSTRUCTION SERVICES STANDARD DRAWING

GUIDLINE METHOD OF SUPPORT
FOR 75 mm TO 300 mm WATER MAINS
FOR USE WHEN SHEETING AND SHORING LEFT IN PLACE

REV 1

APR 2013

T-1007.01-8

NTS

SHEET 1