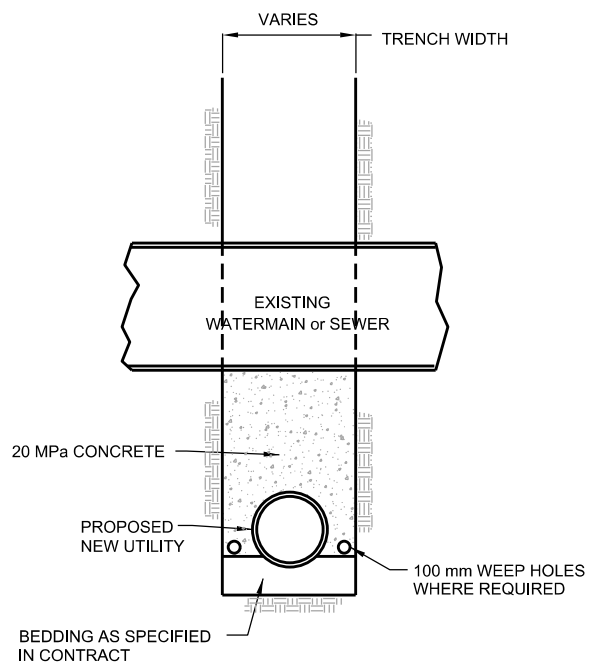
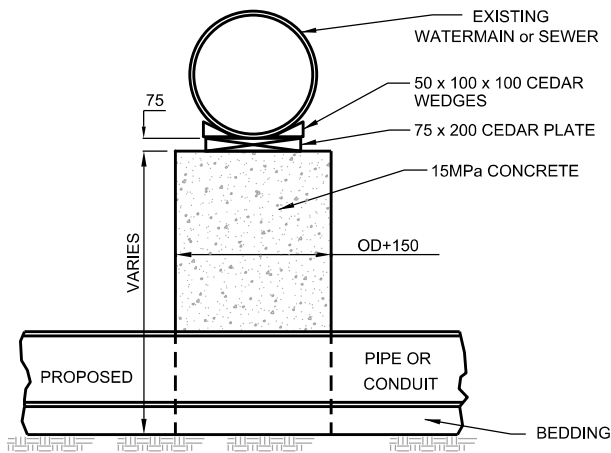


PLAN



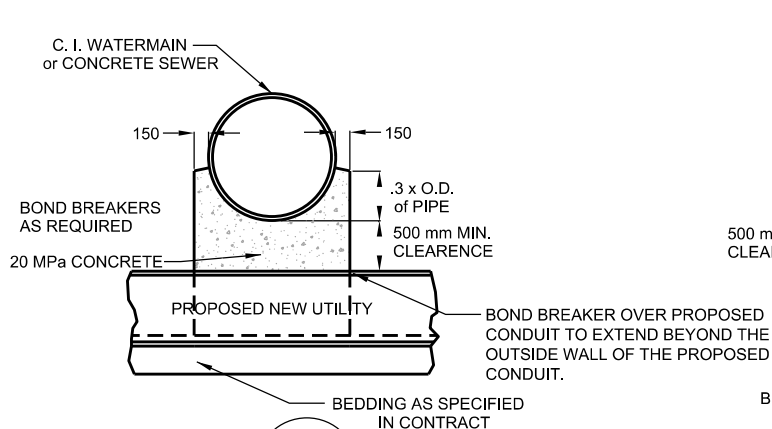
SECTION B



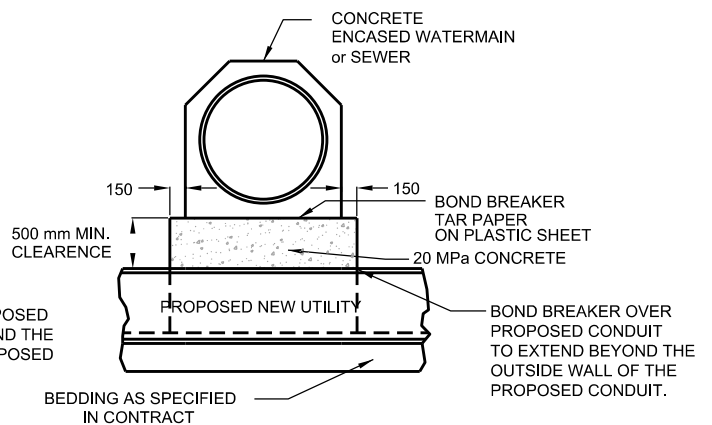
SECTION A

NOTES:

1. CONCRETE ENCASED STEEL MAINS SHALL BE SUPPORTED WITH CONCRETE TO THE UNDERSIDE OF MAIN. TAR PAPER IS TO BE USED BETWEEN THE TWO CONCRETE SURFACES.
2. WATERMAINS SHALL HAVE A BEARING BLOCK OR PLATE OF MIN. DIMENSION OF 75 mm x 200 mm WEDGES BETWEEN THE PIPE OR CONDUIT AND THE CONCRETE SUPPORT.
3. WHERE THE PROPOSED NEW UTILITY IS A PVC OR HDPE PIPE, AN ADDITIONAL RIGID BOARD COMPRESSIBLE BOND BREAKER OF SUFFICIENT STRENGTH AND THICKNESS SHALL BE PLACED OVER THE NEW CONDUIT AND SURROUNDING BEDDING TO ENSURE NO LOAD TRANSFER TO THE PROPOSED NEW CONDUIT.



SECTION A



SECTION A

All dimensions are in millimetres unless otherwise shown.



ENGINEERING & CONSTRUCTION SERVICES STANDARD DRAWING

TYPICAL DETAIL FOR SUPPORTING WATER AND SEWER PIPE OVER NEW WATERMAIN OR SEWER

REV 3

JAN 2015

T-1007.01-4

NTS

SHEET 1