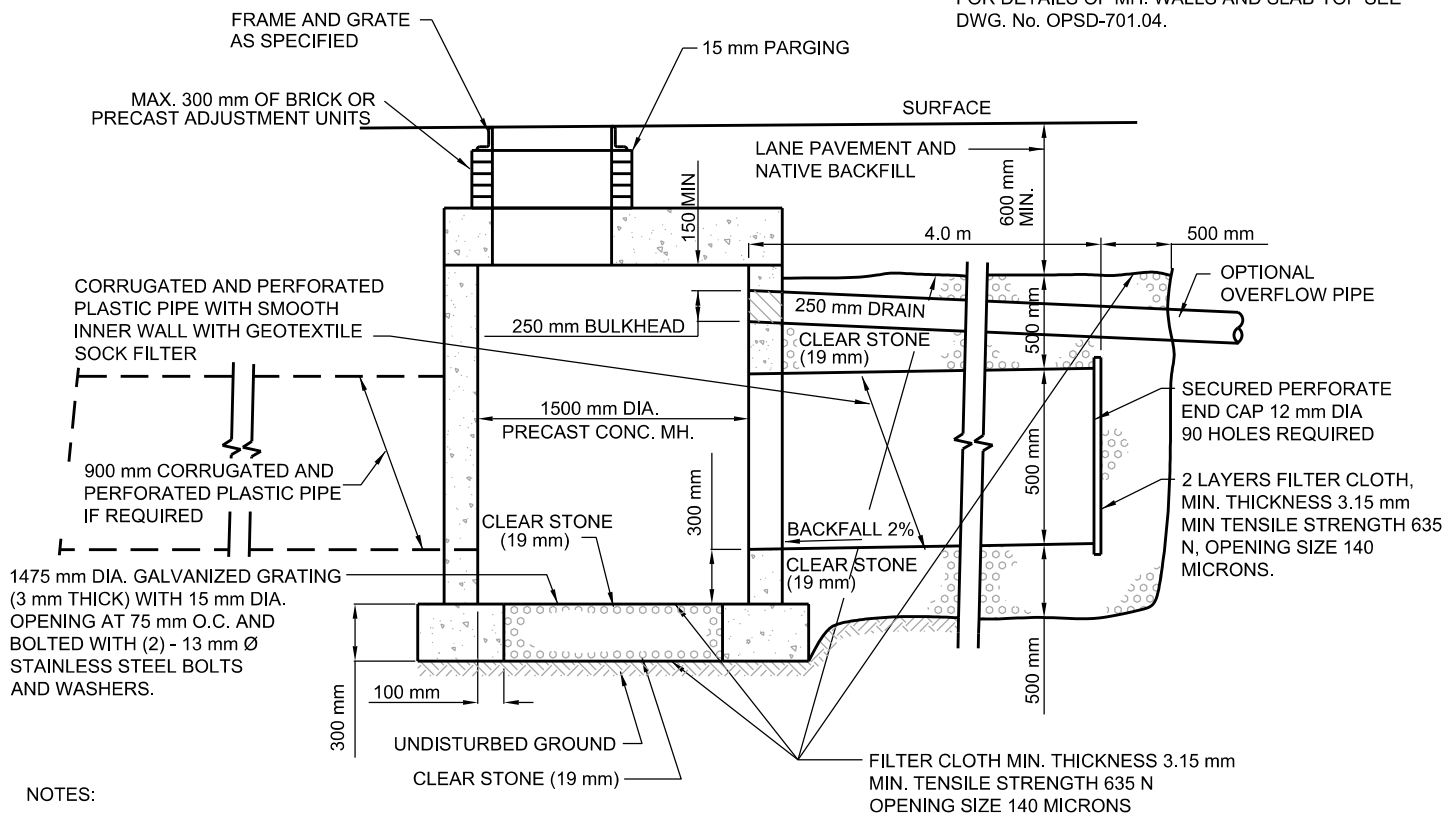


DETAIL OF BASE

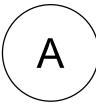
NOTE:
FOR DETAILS OF MH. WALLS AND SLAB TOP SEE
DWG. No. OPSD-701.04.



NOTES:

1. RE-PERFORATED PIPE PERFORATIONS TO BE 12.7 mm DIA., YIELDING 120 PERFORATIONS PER METER OF PIPE LENGTH.
2. PARGING MIX ON ALL BRICKWORK SHALL BE 1:3 MORTAR MIX AND APPLIED 15 mm THICK.

SECTION



All dimensions are in millimetres unless otherwise shown.



ENGINEERING AND CONSTRUCTION SERVICES STANDARD DRAWING

REV 1

APR 2013

**INFILTRATION TRENCH WITH CATCH BASIN
TO DRAIN LANEWAYS**

T-705.010-5

NTS

SHEET 1