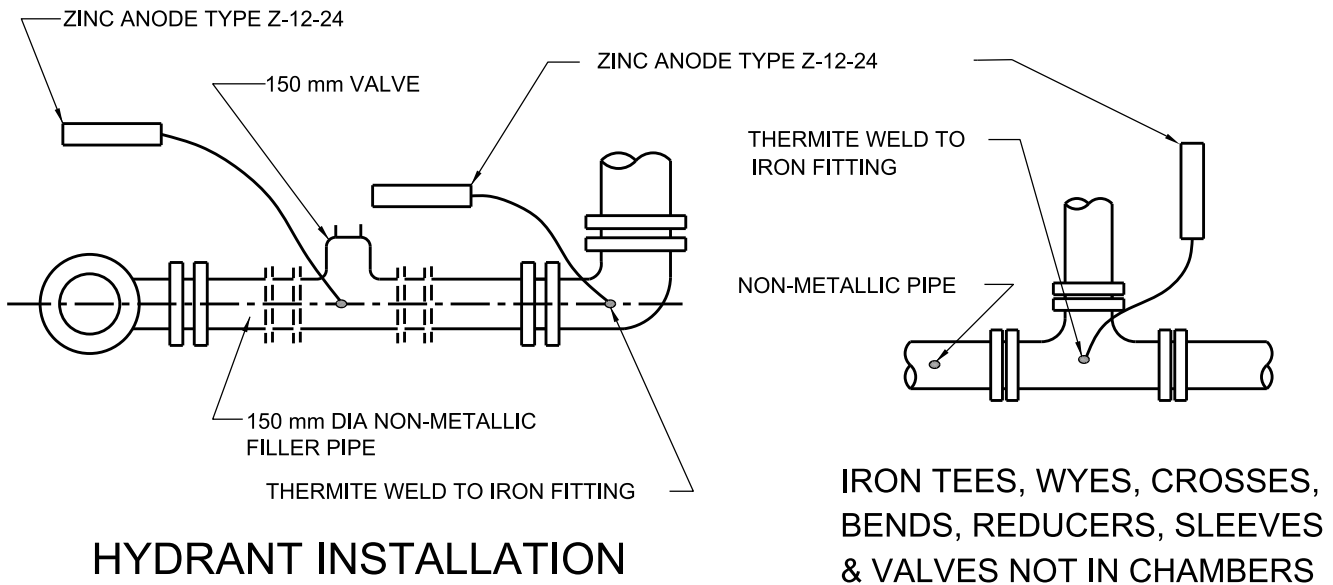


SERVICE CONNECTIONS



HYDRANT INSTALLATION

NOTES:

1. CATHODIC PROTECTION NOT REQUIRED ON FITTINGS CONNECTED TO METALLIC MAIN.
2. ALL EXPOSED THERMITE WELDS MUST BE PROTECTED WITH A THICK COAT OF MASTIC.

All dimensions are in millimetres unless otherwise shown.



ENGINEERING AND CONSTRUCTION SERVICES STANDARD DRAWING

REV 2

APR 2013

CATHODIC PROTECTION FOR VALVES NOT IN CHAMBER
IRON FITTINGS, HYDRANT AND SERVICE CONNECTION
ON NON-METALLIC MAINS

T-1106.04

NTS

SHEET 1