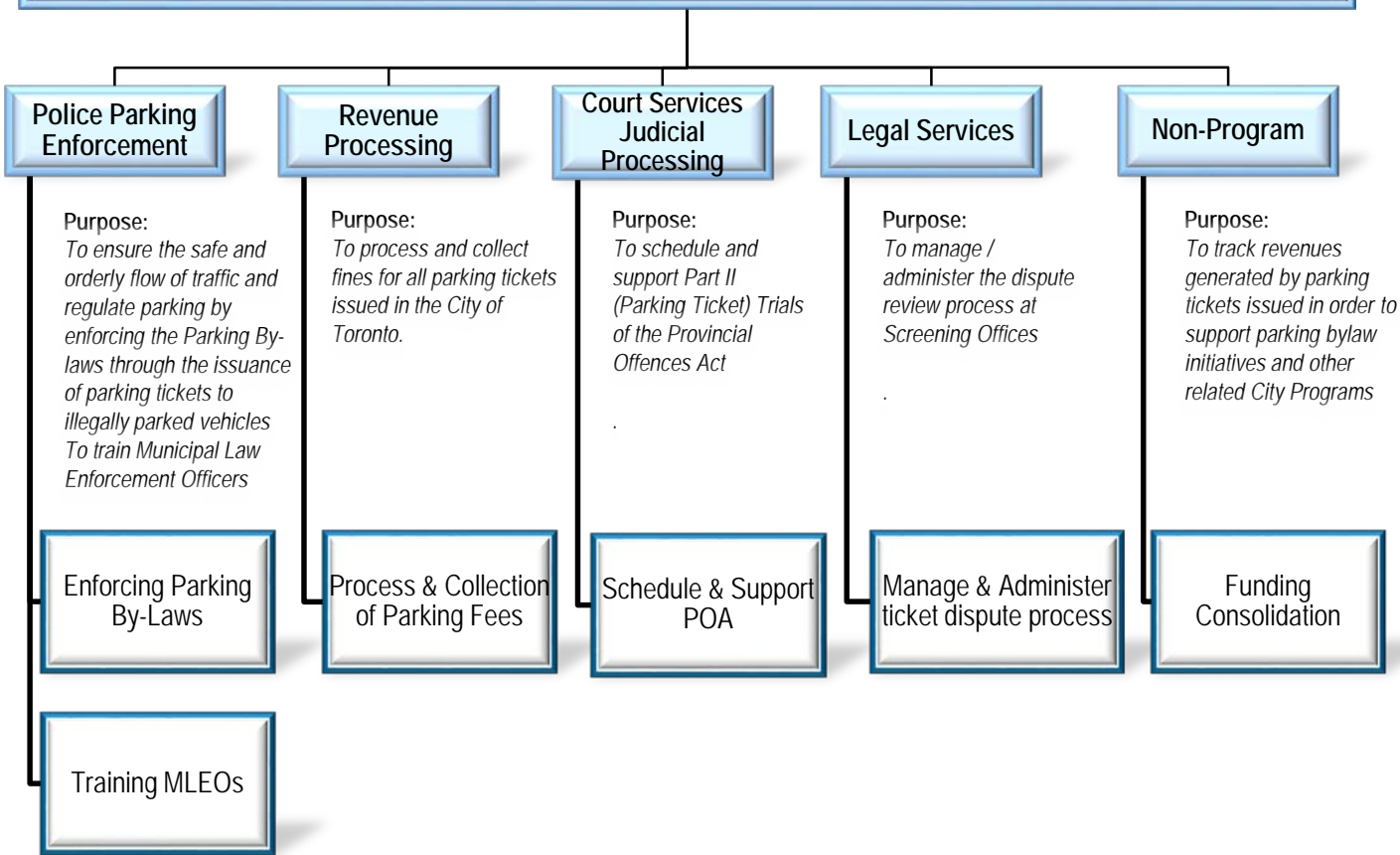


Parking Tags Enforcement & Operations

Ensure the safe and orderly flow of traffic and regulate parking by enforcing the Parking Bylaw through the issuance of parking tickets to illegally parked vehicles. In addition, provide training to Municipal Law Enforcement Officers (MLEO), who are empowered to issue parking tickets on private and municipal properties.



Service Customer

Revenue Processing

- Illegally Parked Vehicle Owners
- Vehicle Drivers
- Private Property Owners
- Other Municipal Properties

Indirect (Beneficiary)

- Residents
- Staff – City Divisions
- City-owned and operated Facilities

Police Parking Enforcement

- Illegally Parked Vehicle Owners
- Vehicle Drivers
- Private Property Owners
- Other Municipal Properties

Indirect (Beneficiary)

- Residents
- Staff – City Divisions
- Staff – Agencies & Boards
- City-owned and operated Facilities

Courts Services Judicial Processing

- Illegally Parked Vehicle Owners
- Vehicle Drivers

Indirect (Beneficiary)

- Residents
- Staff – City Divisions
- Staff – Agencies & Boards
- City-owned and operated Facilities
- Provincial & Federal Governments

Legal Services

- Illegally Parked Vehicle Owners
- Vehicle Drivers

Indirect (Beneficiary)

- Residents
- Staff – City Divisions
- Staff – Agencies & Boards
- City-owned and operated Facilities
- Provincial & Federal Governments

Non Program Revenues

- Illegally Parked Vehicle Owners
- Vehicle Drivers
- Private Property Owners
- Other Municipal Properties

Indirect (Beneficiary)

- Residents
- Staff – City Divisions
- Staff – Agencies & Boards
- City-owned and operated Facilities