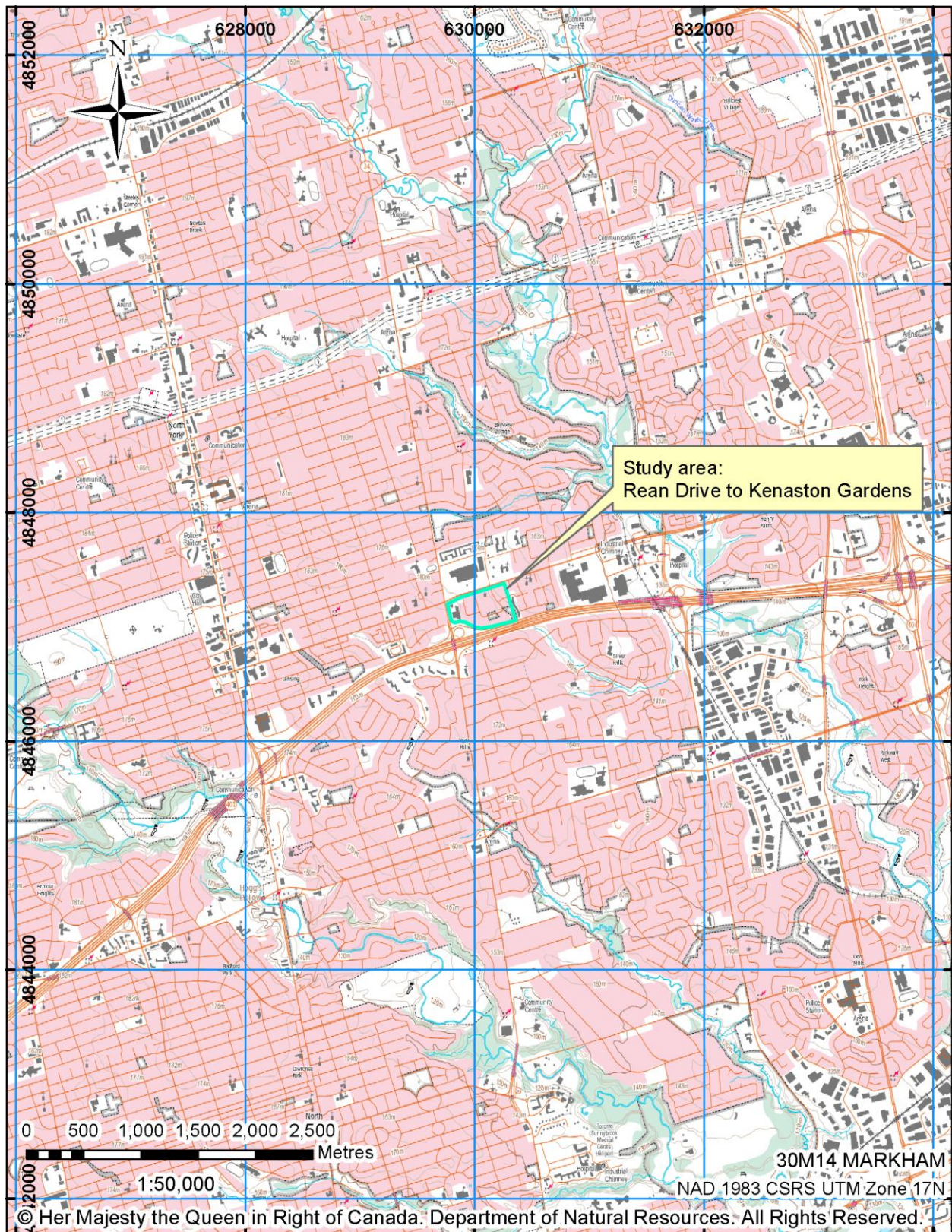
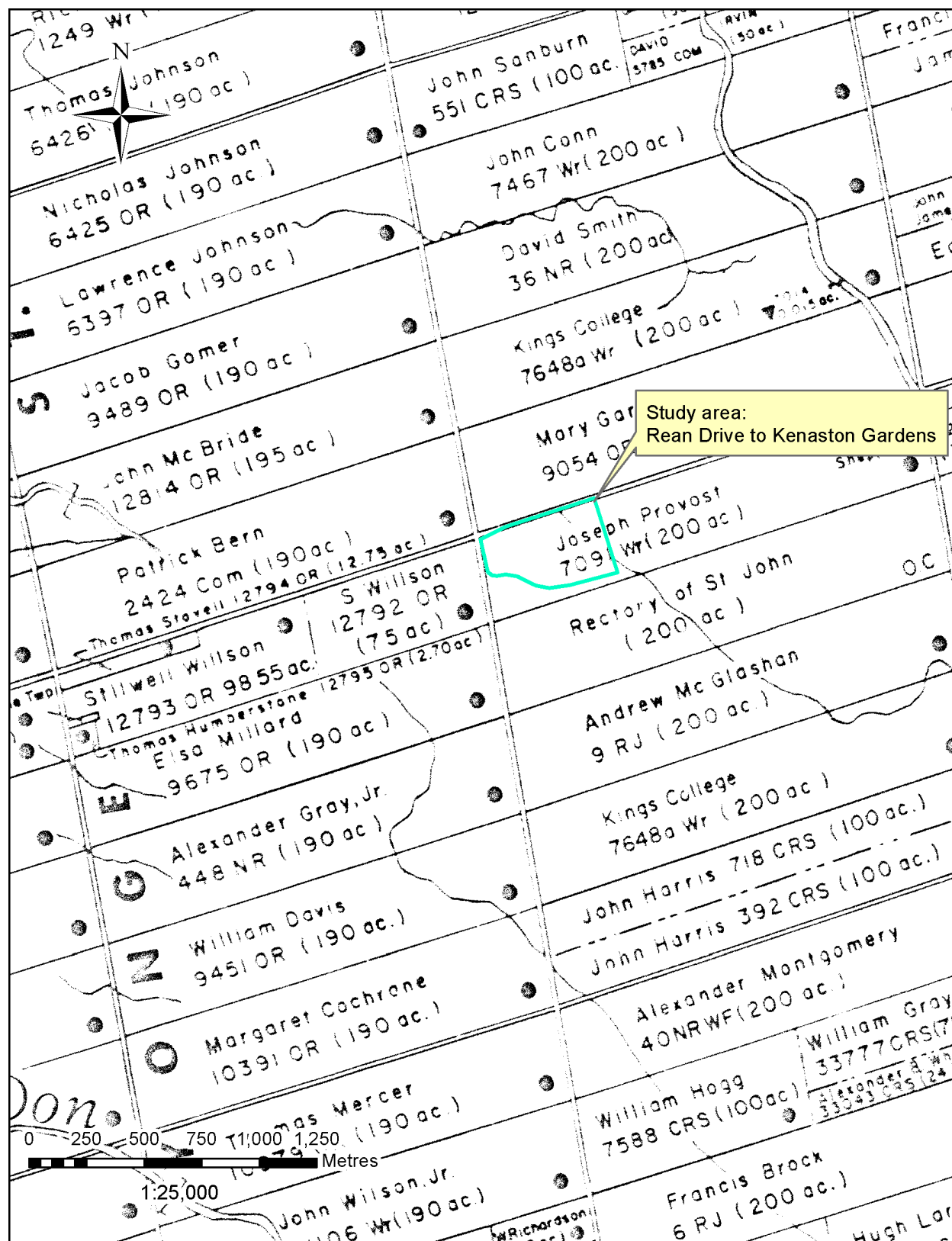


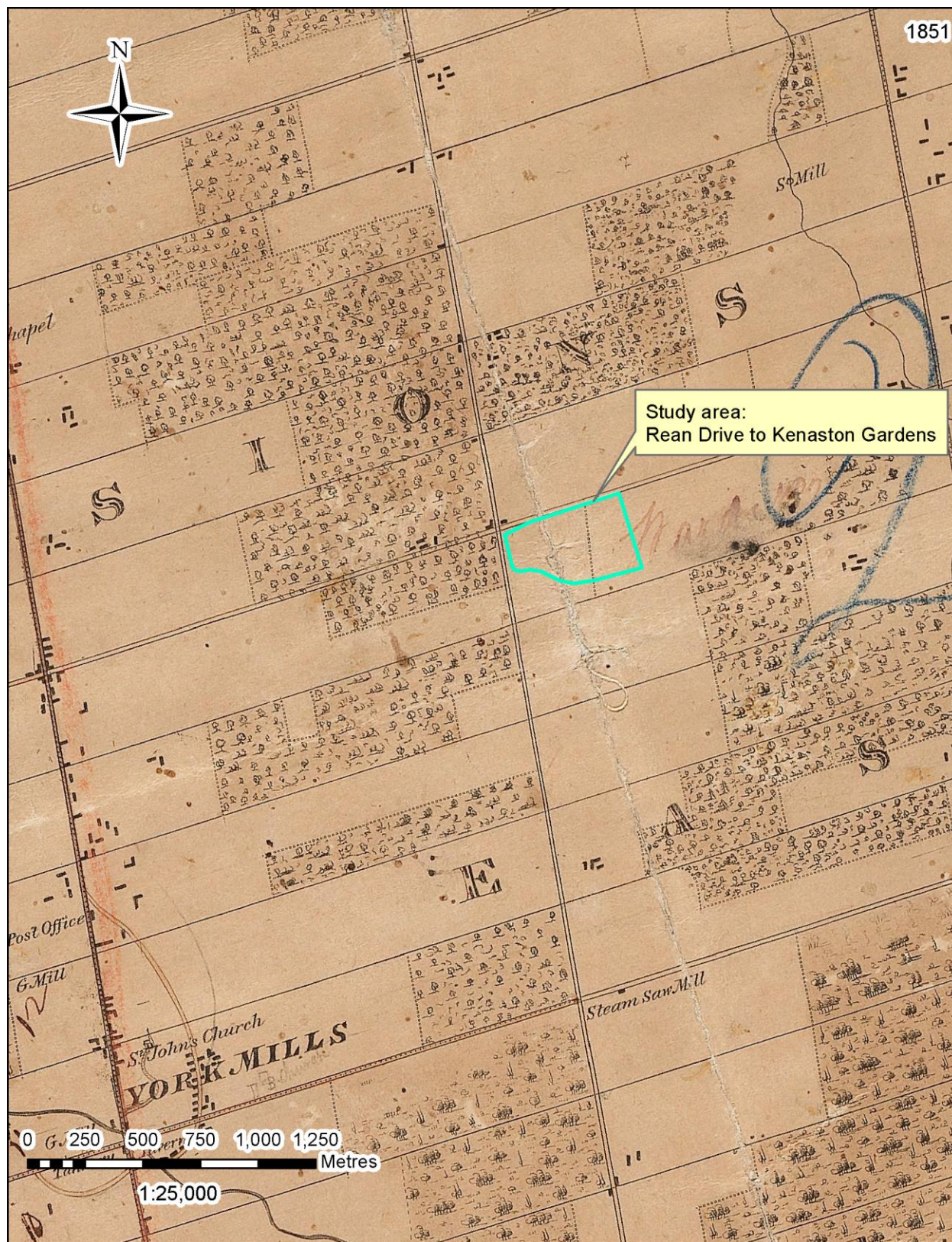
## 8.0 MAPS



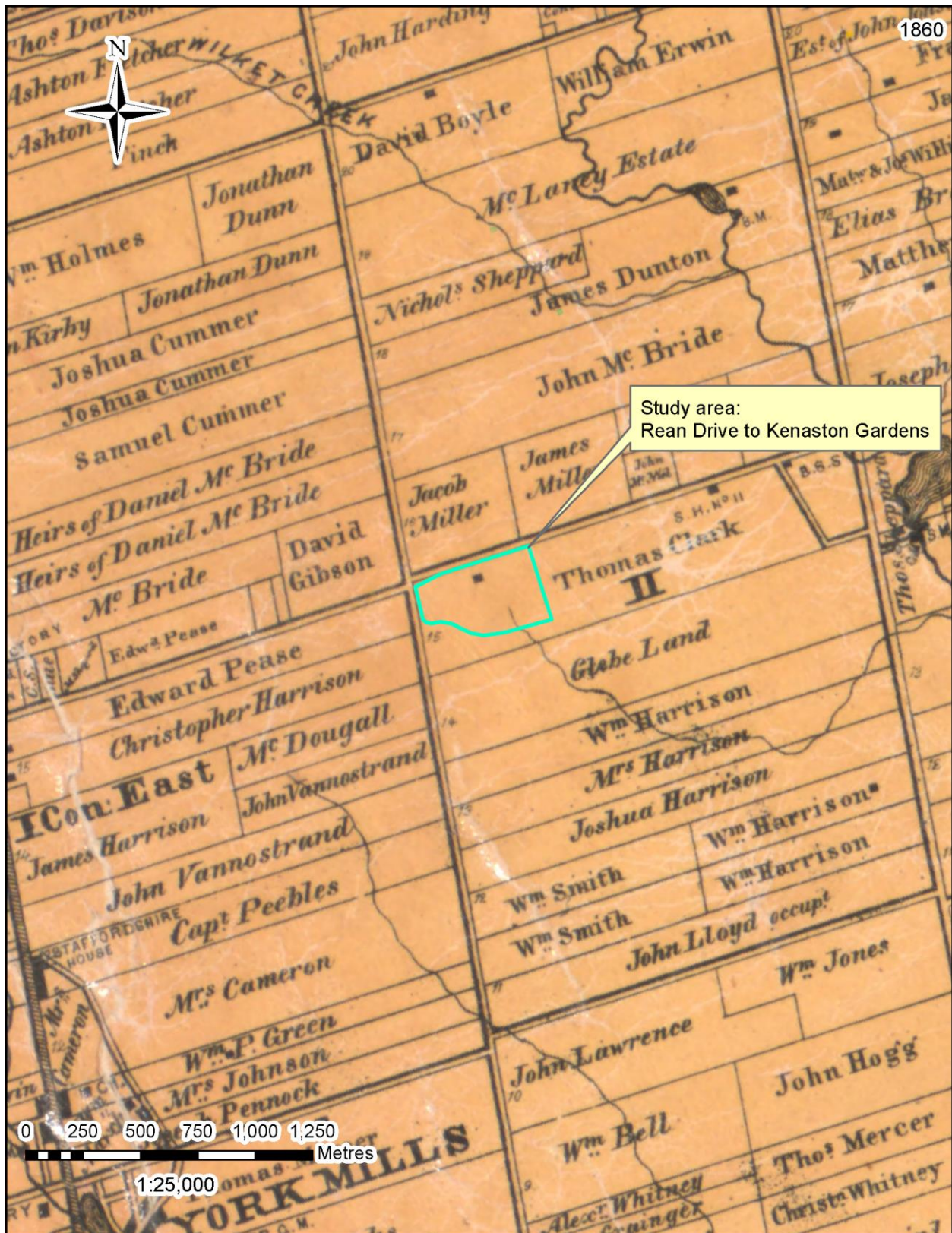
Map 1: Location of the Rean Drive to Kenaston Gardens east-west extension study area (NRC 2010).



Map 2: Disposition of Crown lands showing Joseph Provost (MNR 1976).



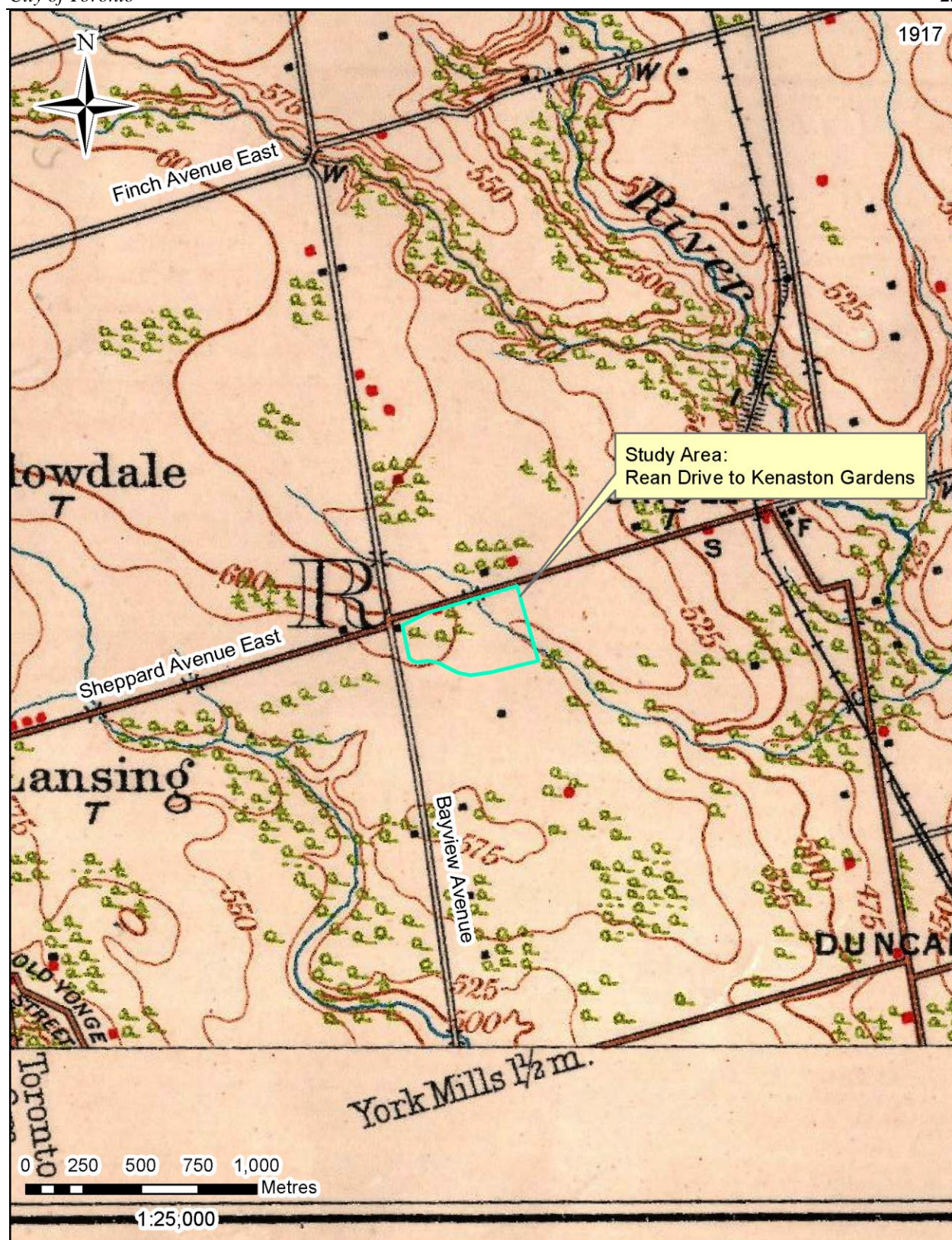
Map 3: Location of the study area on historic 1851 map showing lack of development around study area (Browne 1851).



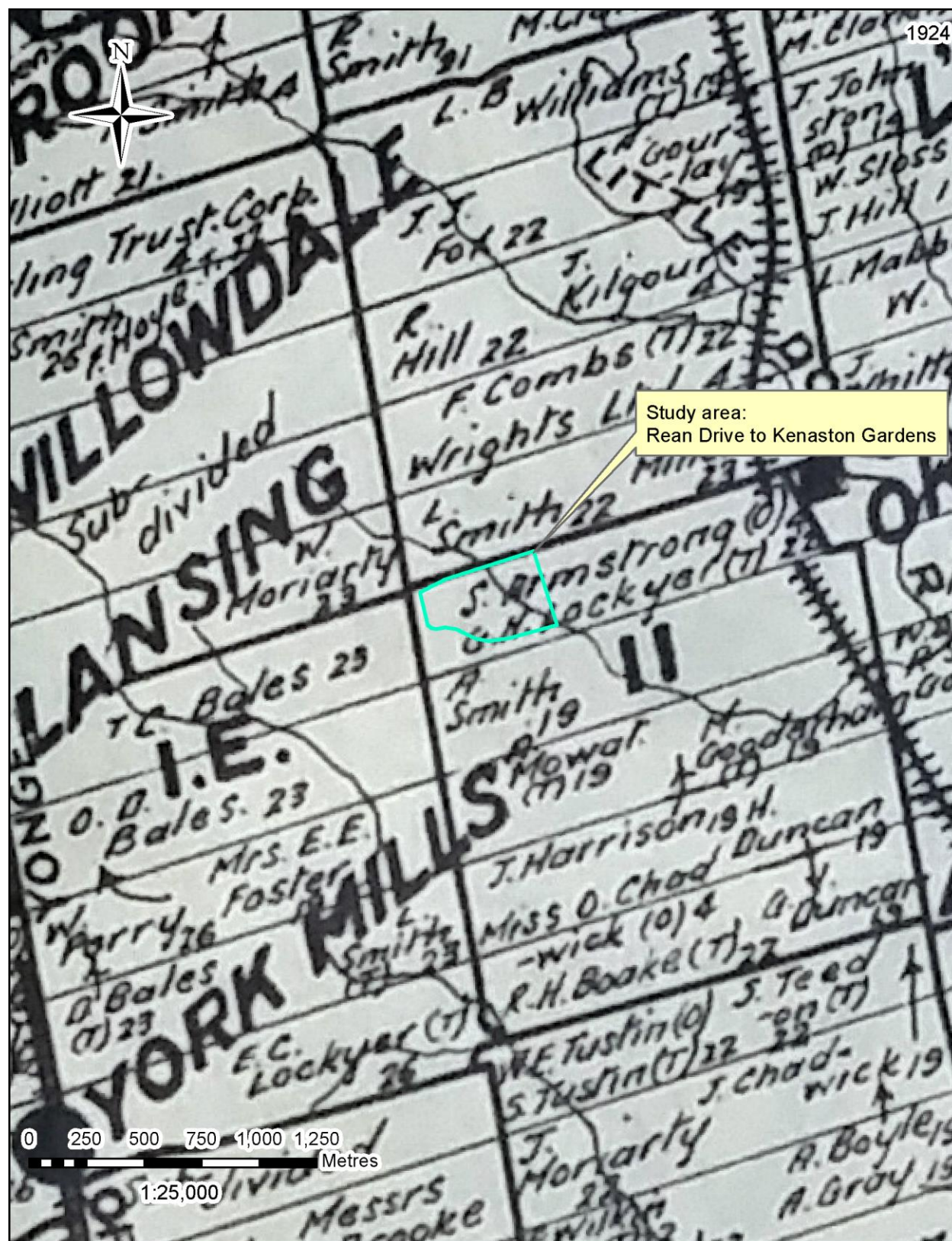
Map 4: Location of the study area on 1860 map of York County showing ownership and house of Thomas Clark (Tremaine 1860).



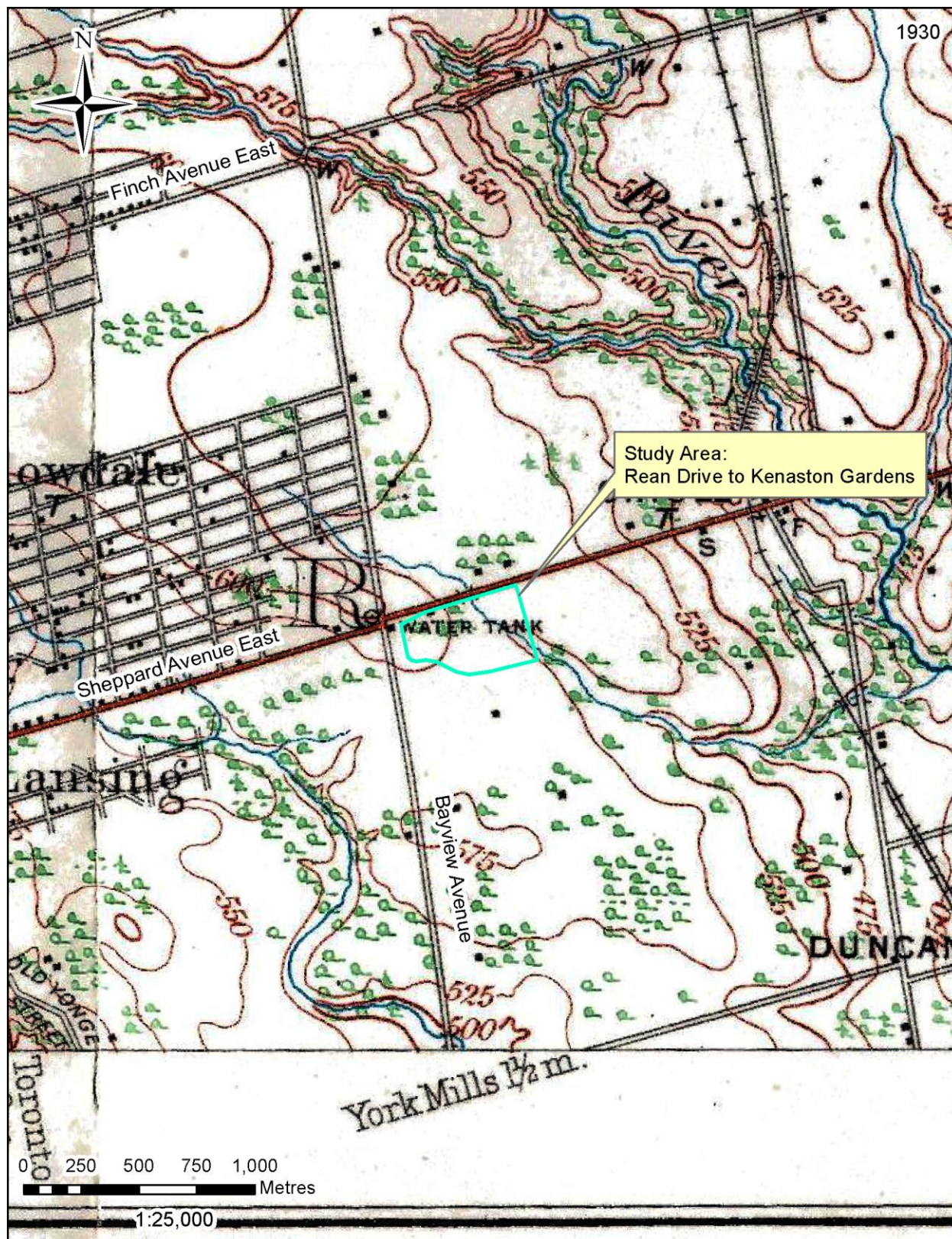




Map 6: Topographic mapping of study area showing streams in northeast corner and house adjacent to the northwest corner (DMD 1917).



Map 7: 1924 Map showing ownership of S. Armstrong and tenancy of G. H. Lockyer (Cummins 1924).



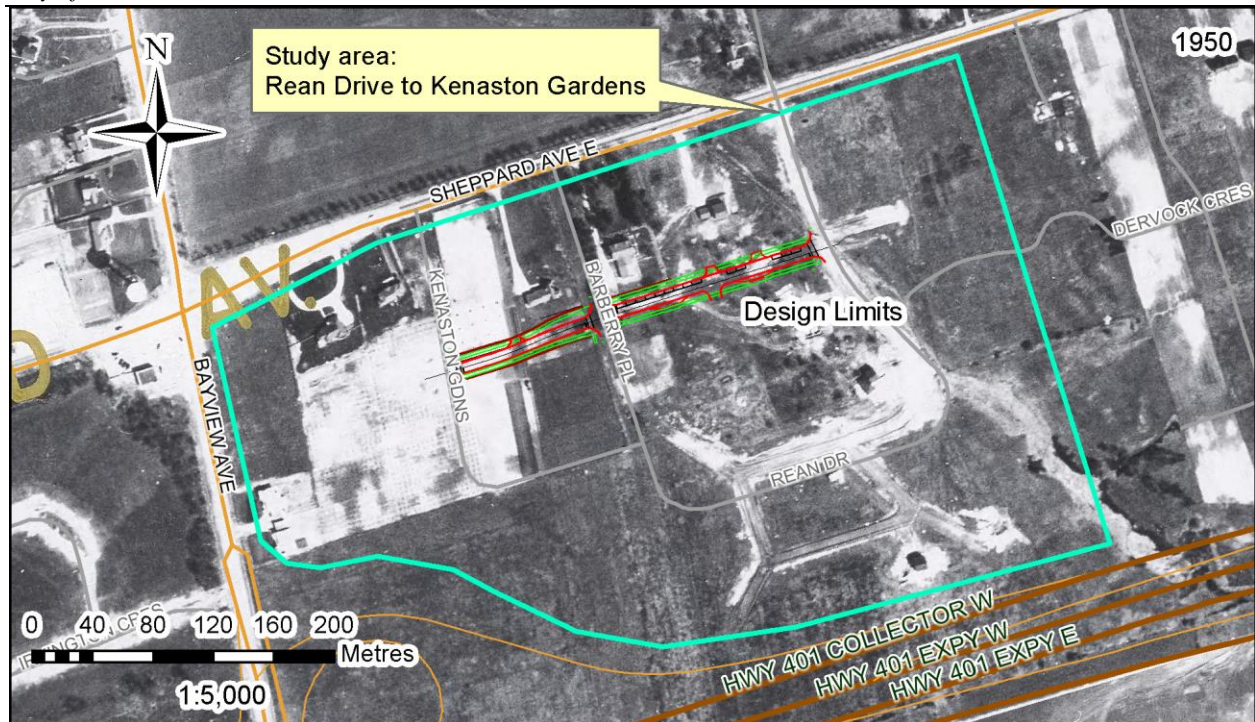
Map 8: Topographic mapping from 1930 of study area showing houses along Sheppard Avenue East (DND 1930).



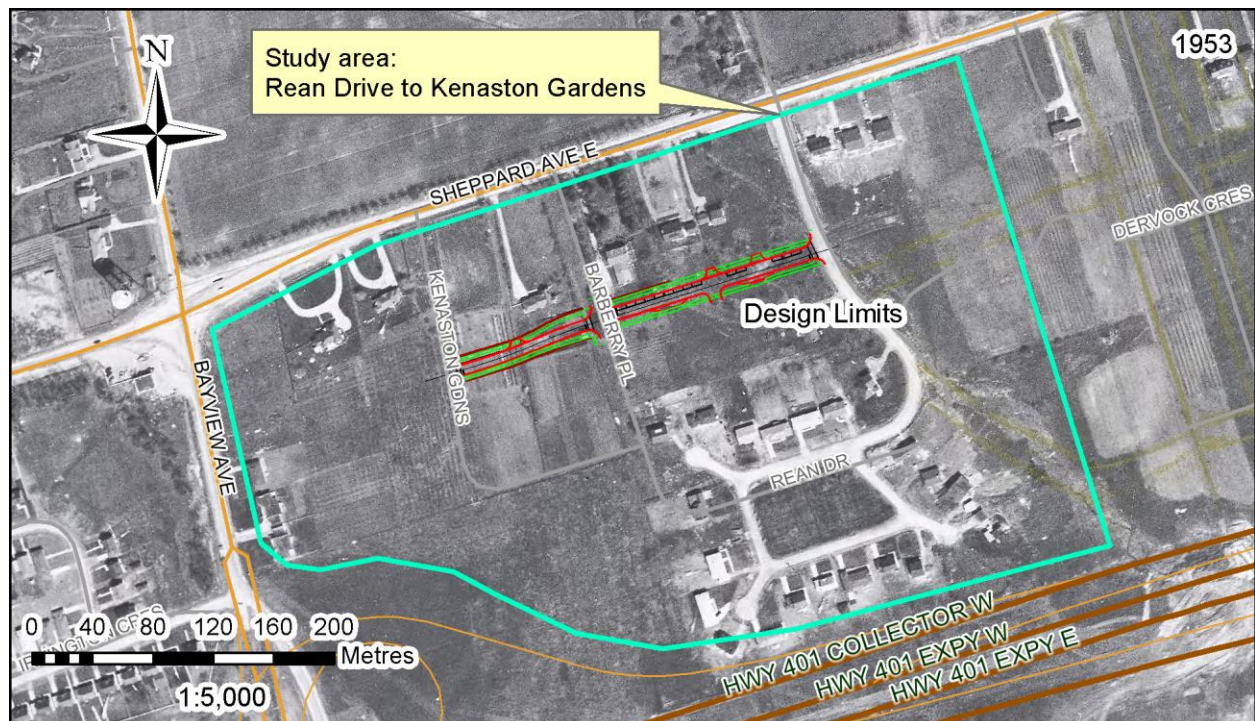
Map 9: Topographic mapping of study area showing house along Sheppard Avenue East (DND 1951).



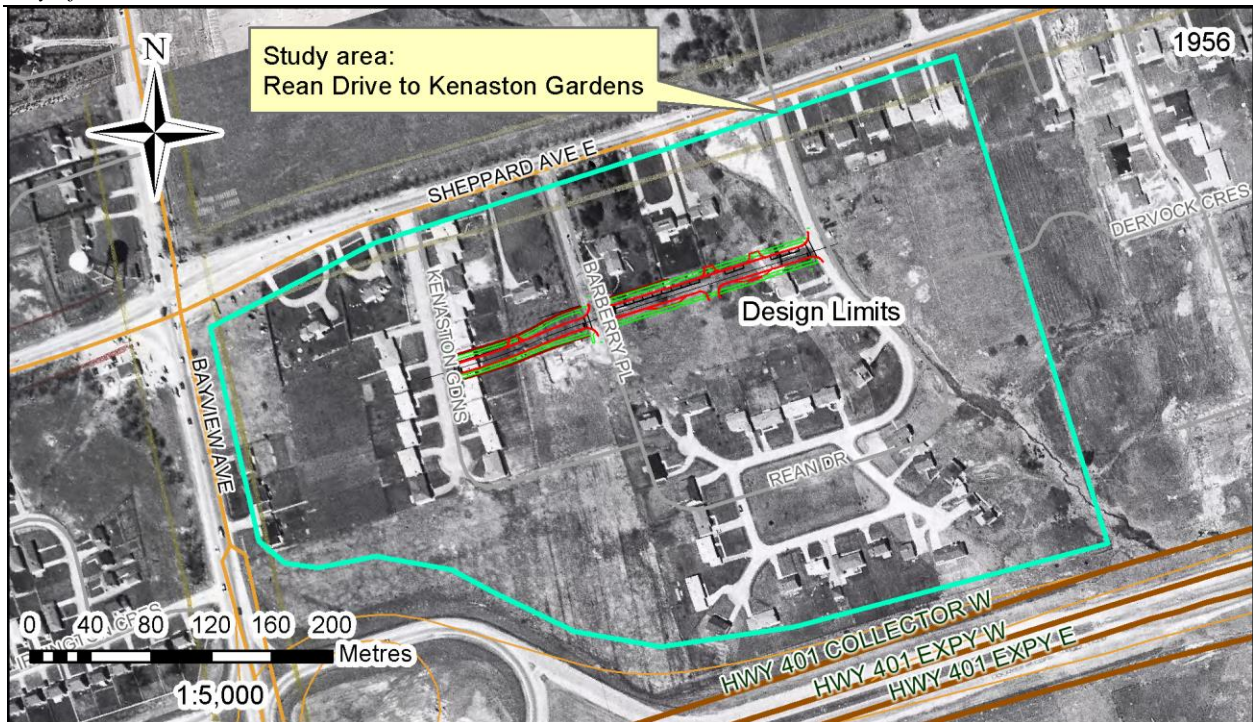
Map 10: 1947 aerial view of the study area showing pre-development landscape (Toronto Archives 1947).



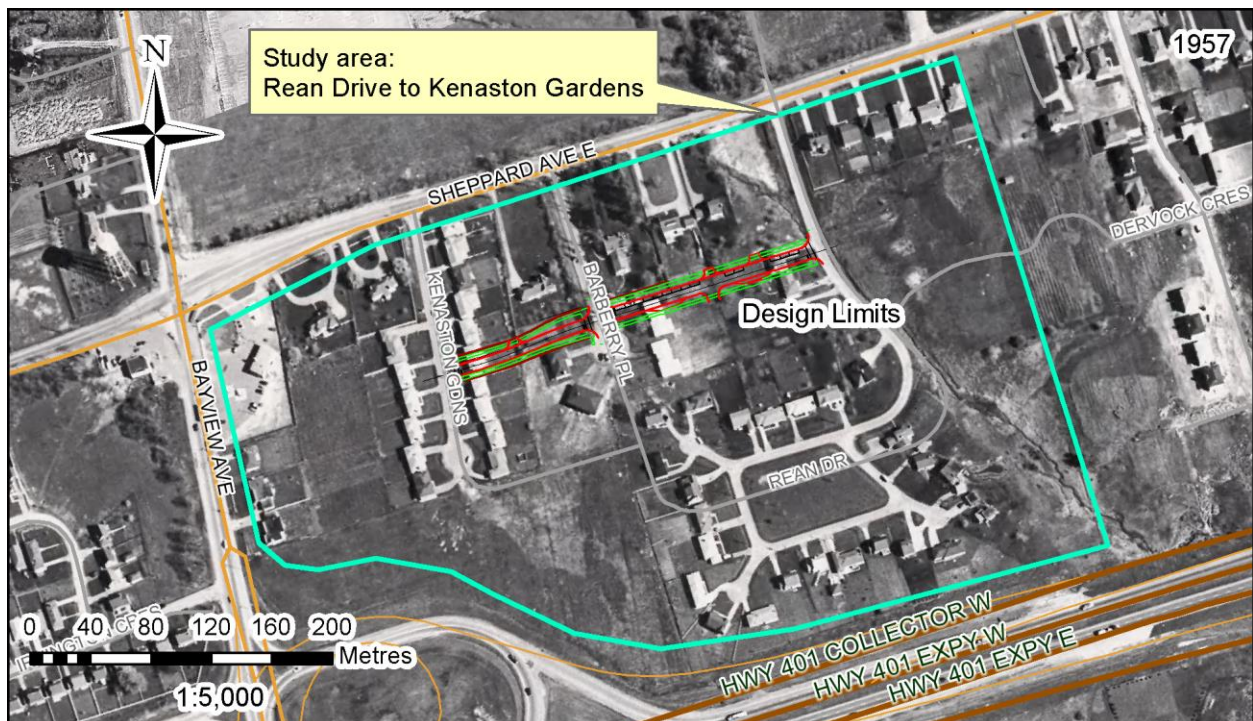
Map 11: 1950 aerial view of the study area showing early roadways corner (City of Toronto Archives 1950).



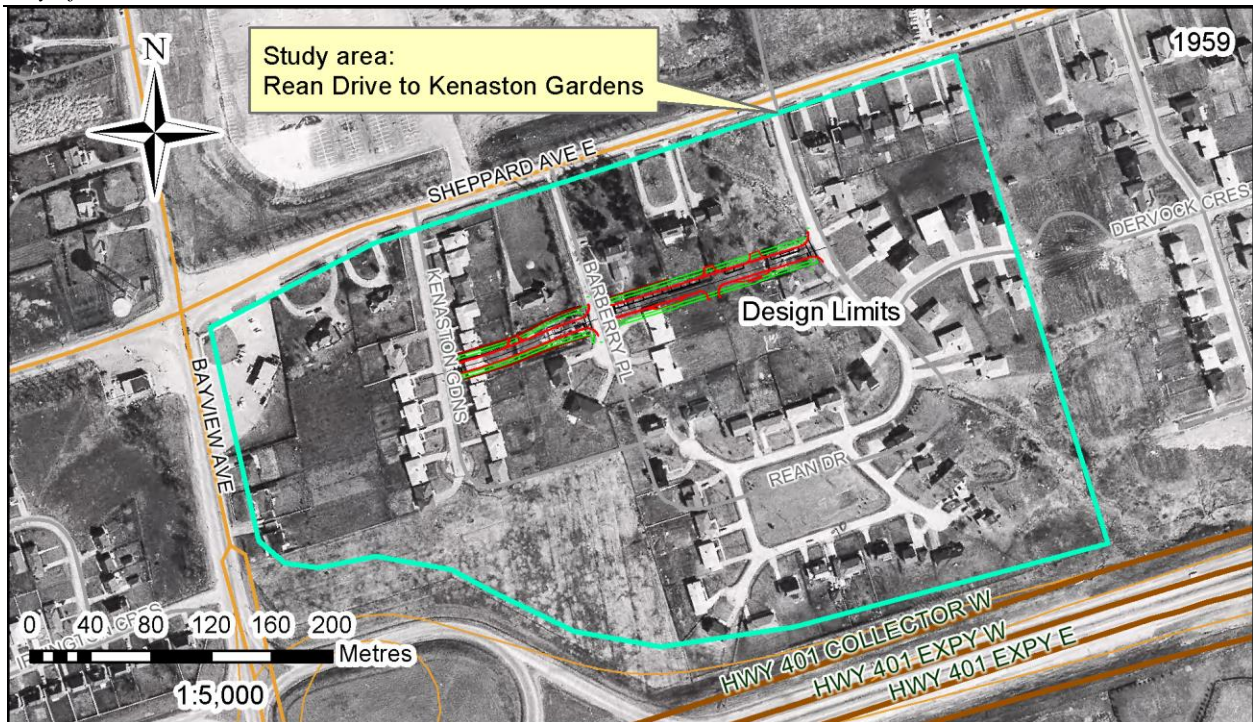
Map 12: 1953 aerial view of the study area showing initial development of Rean Drive (City of Toronto Archives 1953).



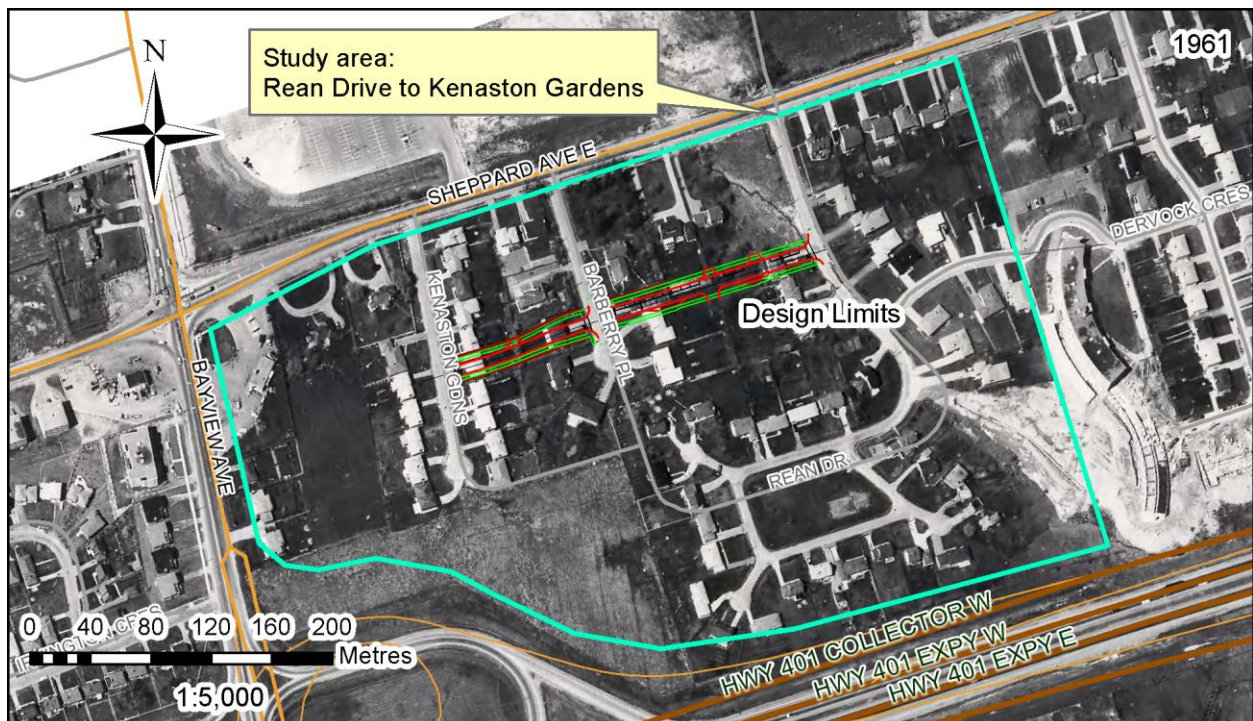
Map 13: 1956 aerial view of the study area showing new development of Kenaston Gardens (City of Toronto Archives 1956).



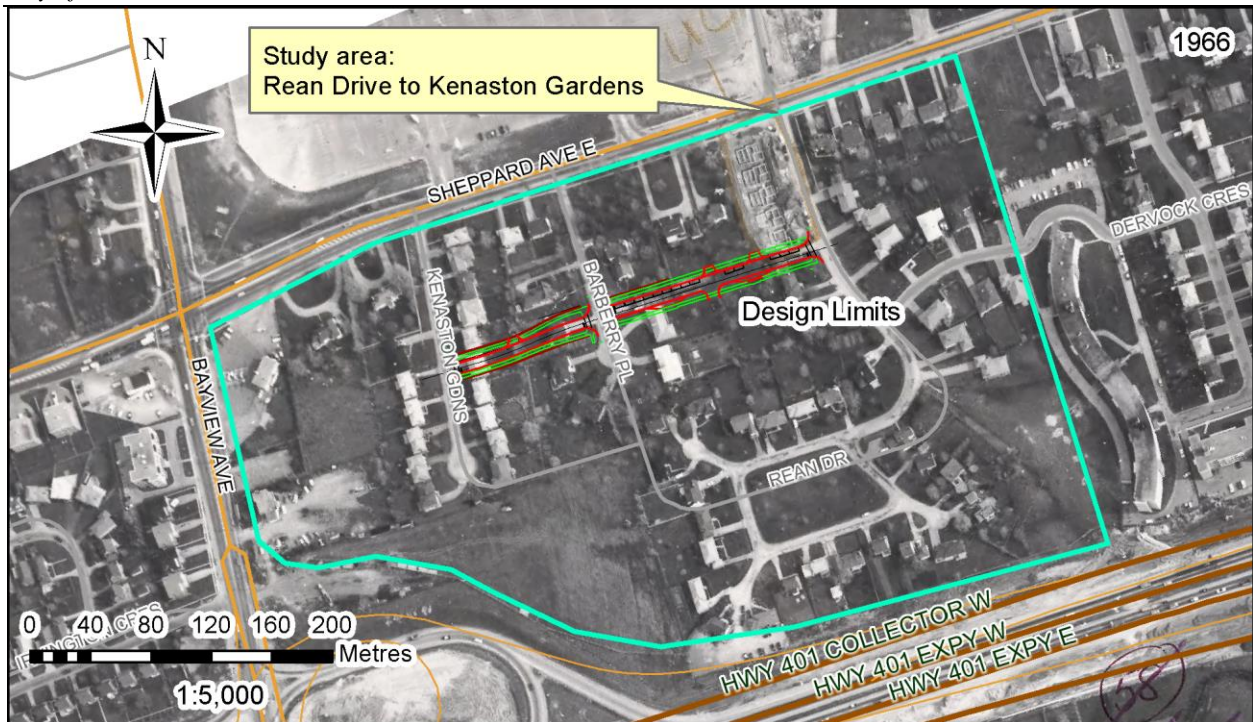
Map 14: 1957 aerial view of the study area showing development at southeast corner of Sheppard Avenue East and Bayview Avenue (City of Toronto Archives 1957).



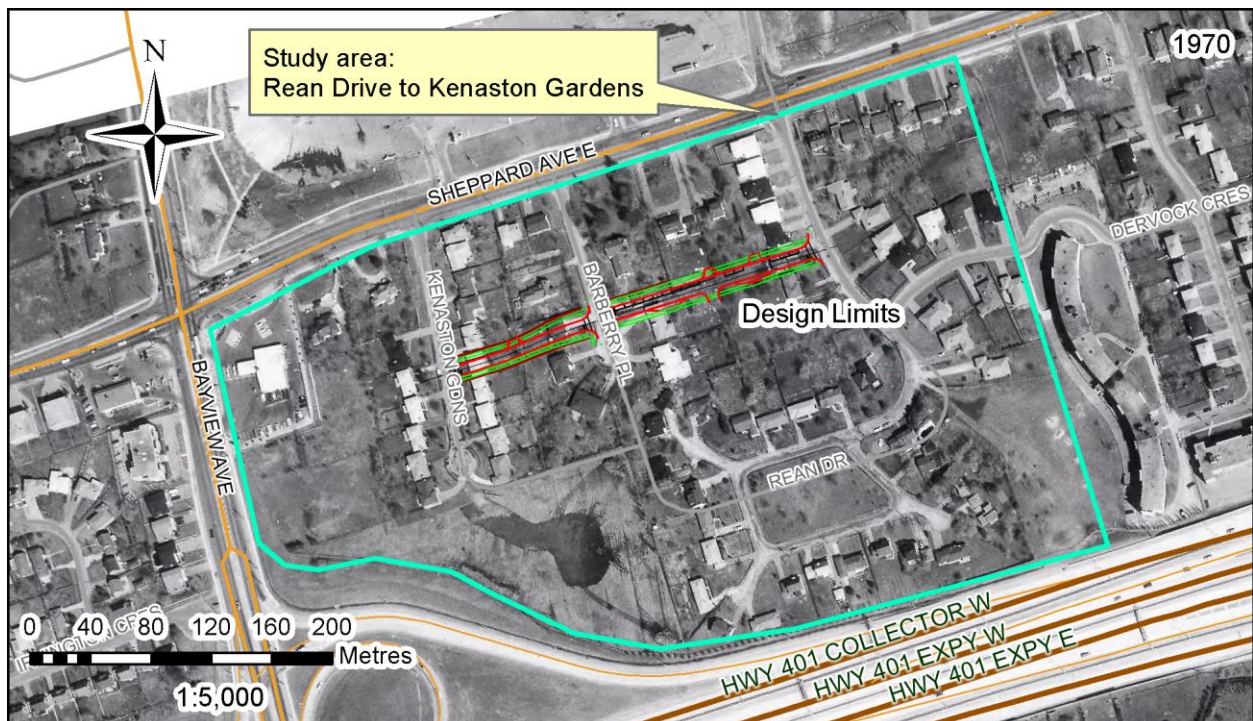
Map 15: 1959 aerial view of the study area showing development along eastern limit (City of Toronto Archives 1959).



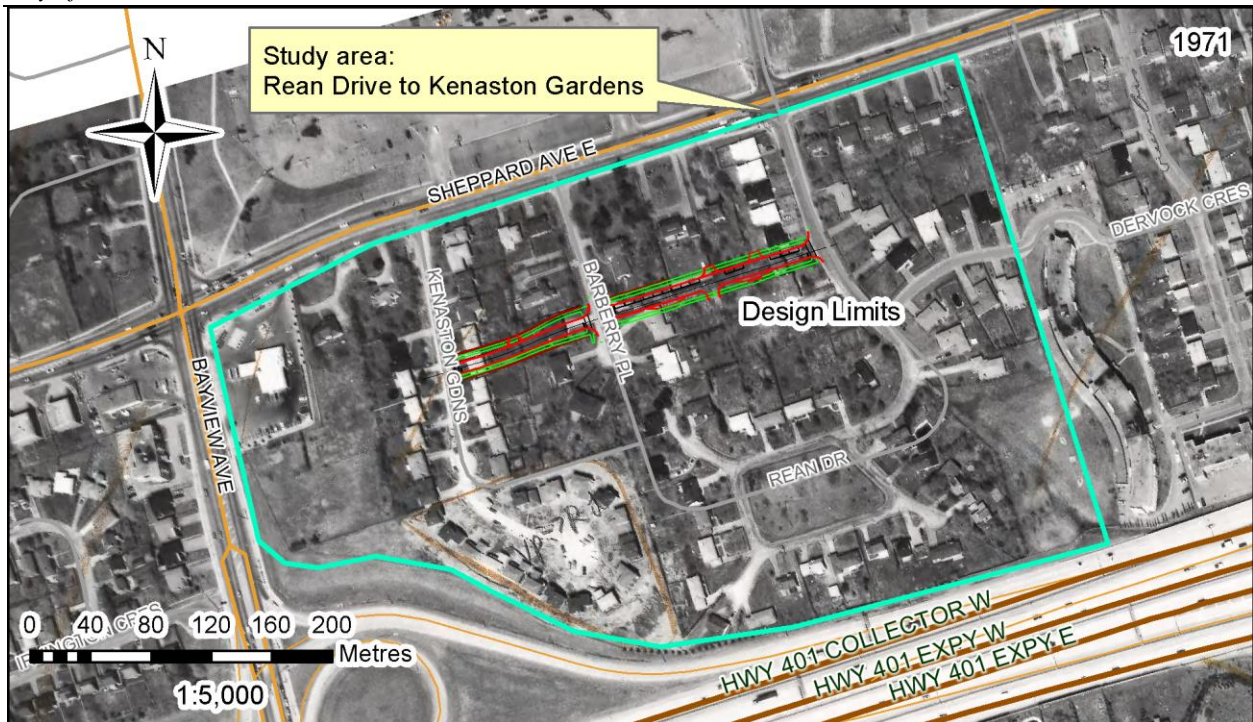
Map 16: 1961 aerial view of the study area showing extensive disturbance around the Wilket Creek channel in the southeast corner (City of Toronto Archives 1961).



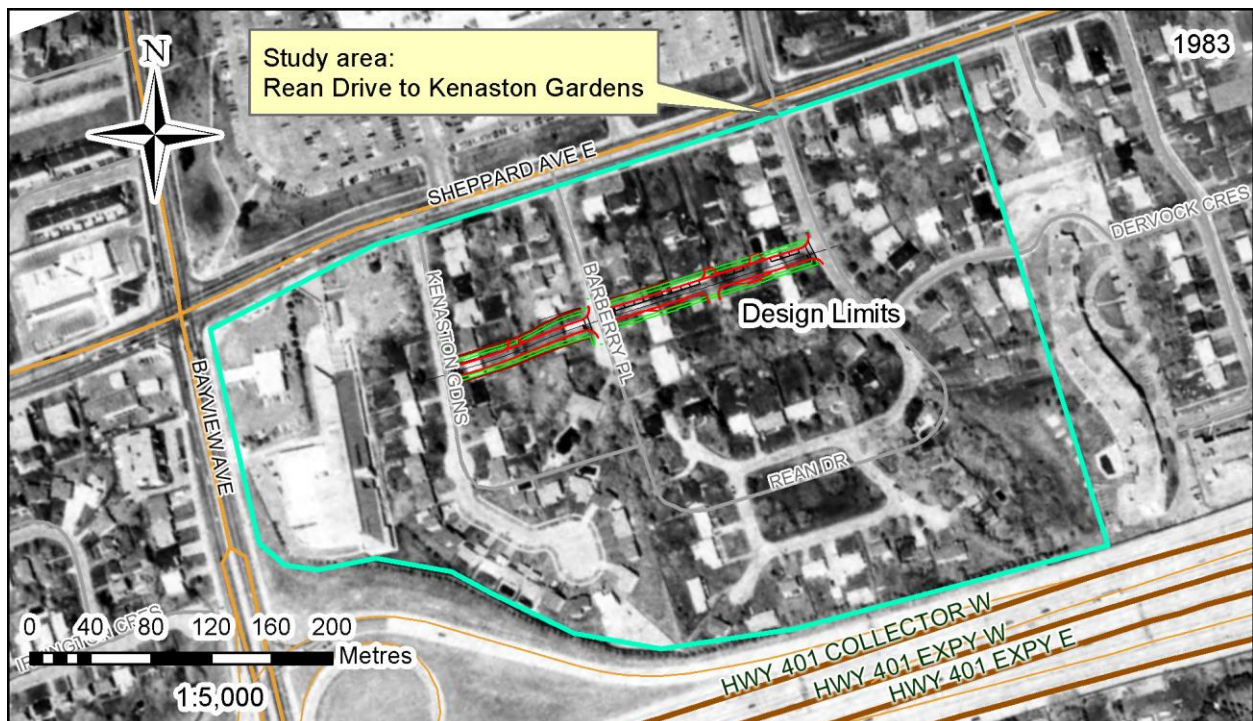
Map 17: 1966 aerial view of the study area showing new house construction north of the design limit in the area of the former Wilket Creek channel (City of Toronto Archives 1971).



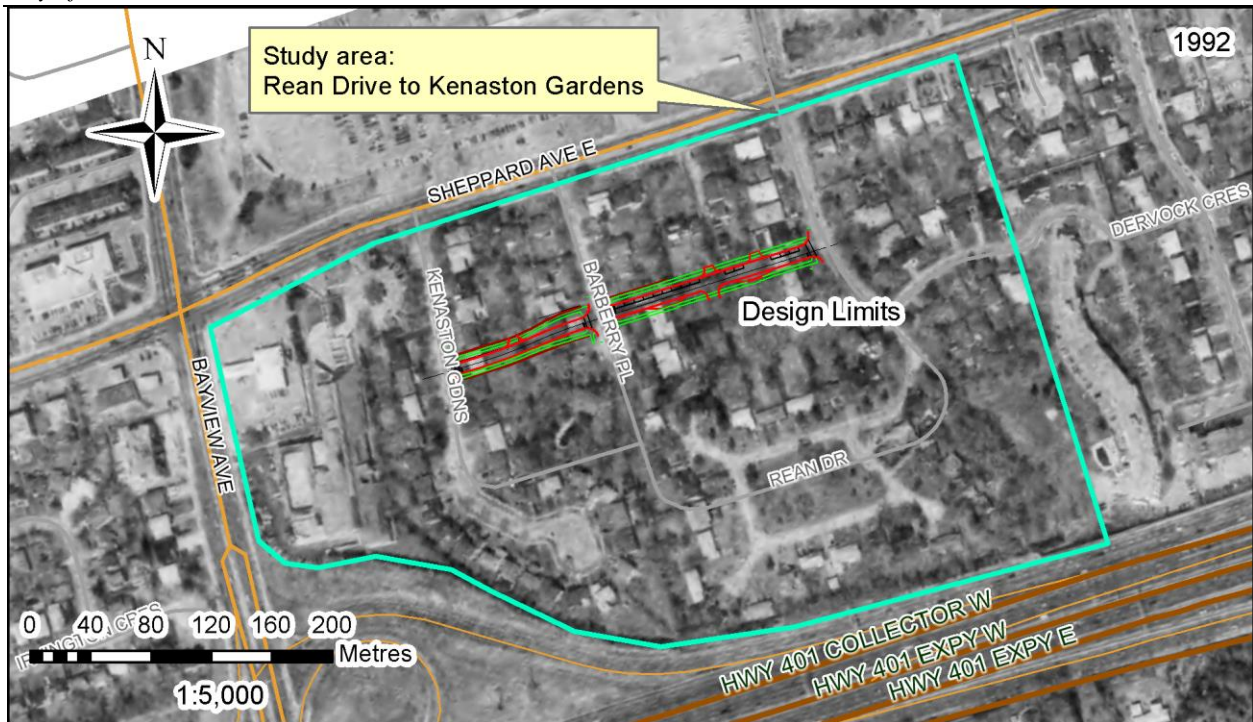
Map 18: 1970 aerial view of the study area showing southward extension of Kenaston Gardens into southwest corner (City of Toronto Archives 1970).



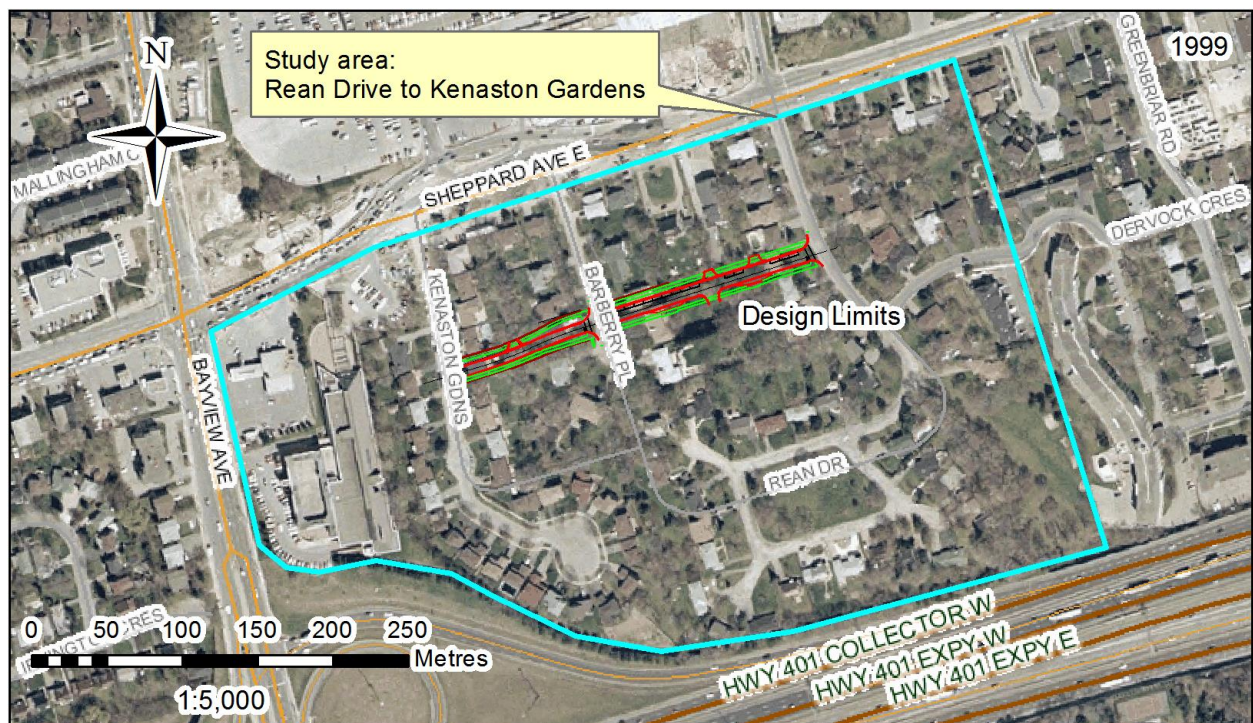
Map 19: 1971 aerial view of the study area showing new houses on Kenaston Gardens in southwest corner (City of Toronto Archives 1971).



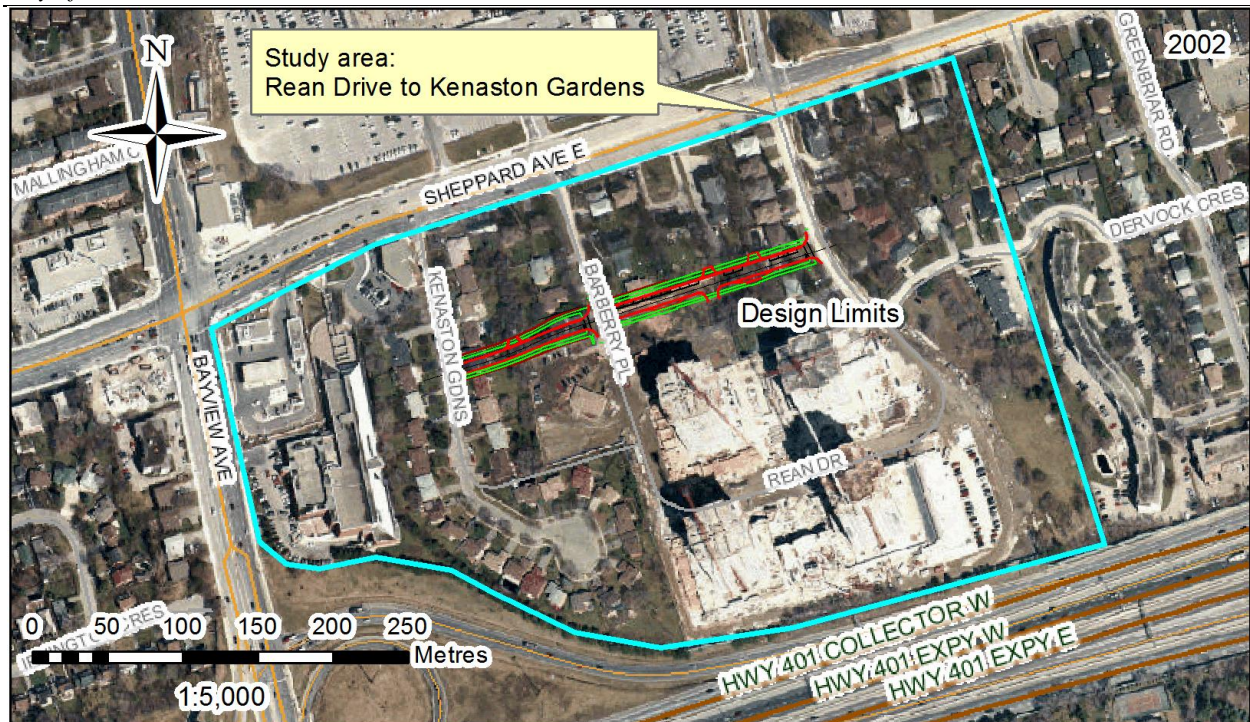
Map 20: 1983 aerial view of the study area showing increased development along Bayview Avenue (City of Toronto Archives 1983).



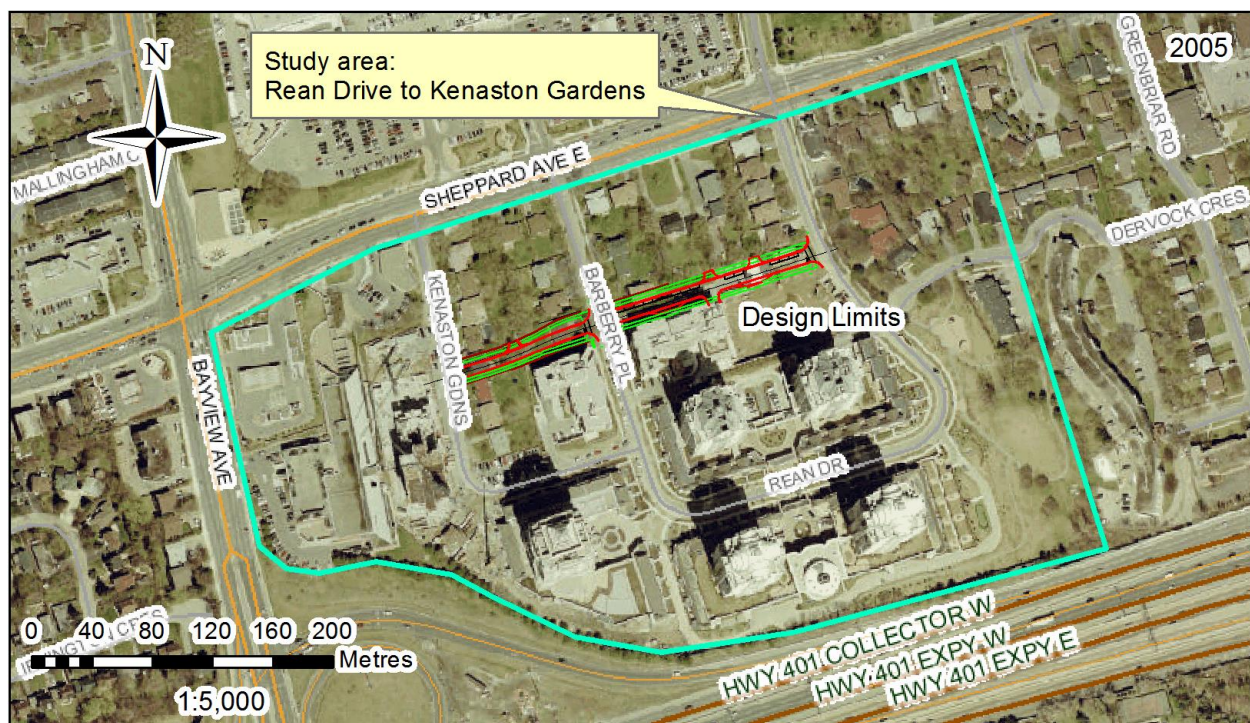
Map 21: 1992 aerial view of the study area showing southward extension of Kenaston Gardens into southwest corner (City of Toronto Archives 1992).



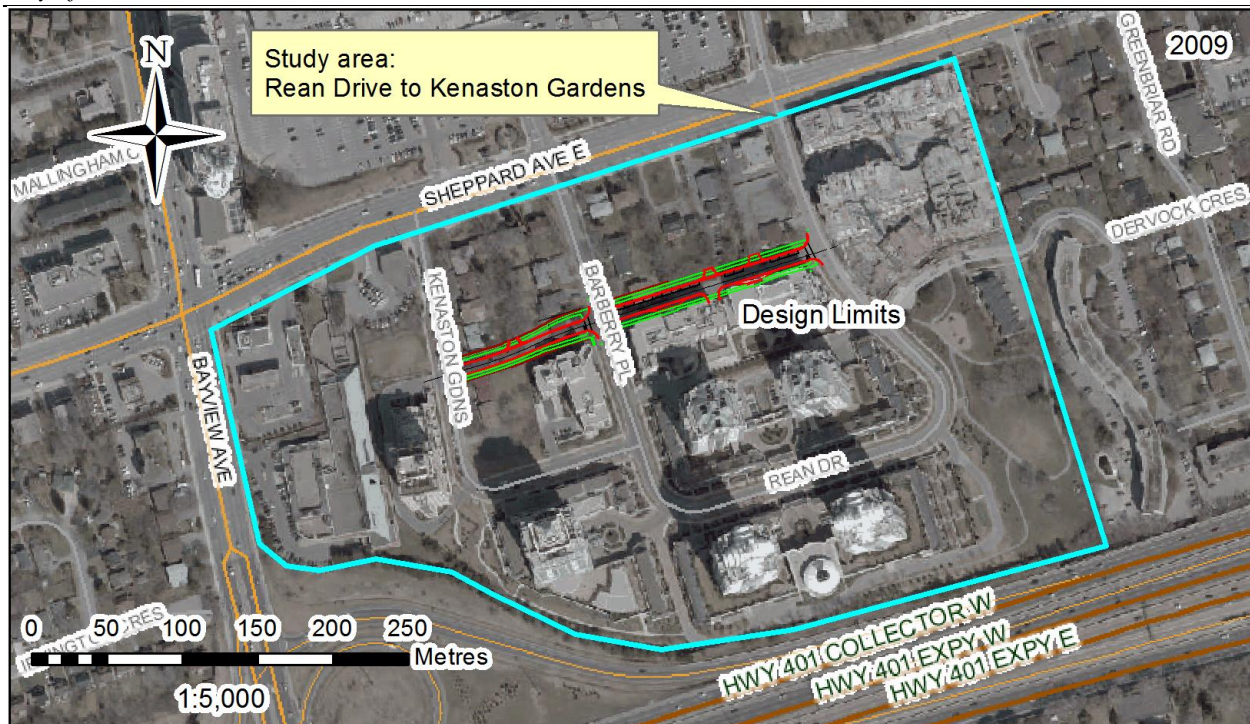
Map 22: 1999 aerial view of the study area showing southward extension of Kenaston Gardens into southwest corner (City of Toronto 2014).



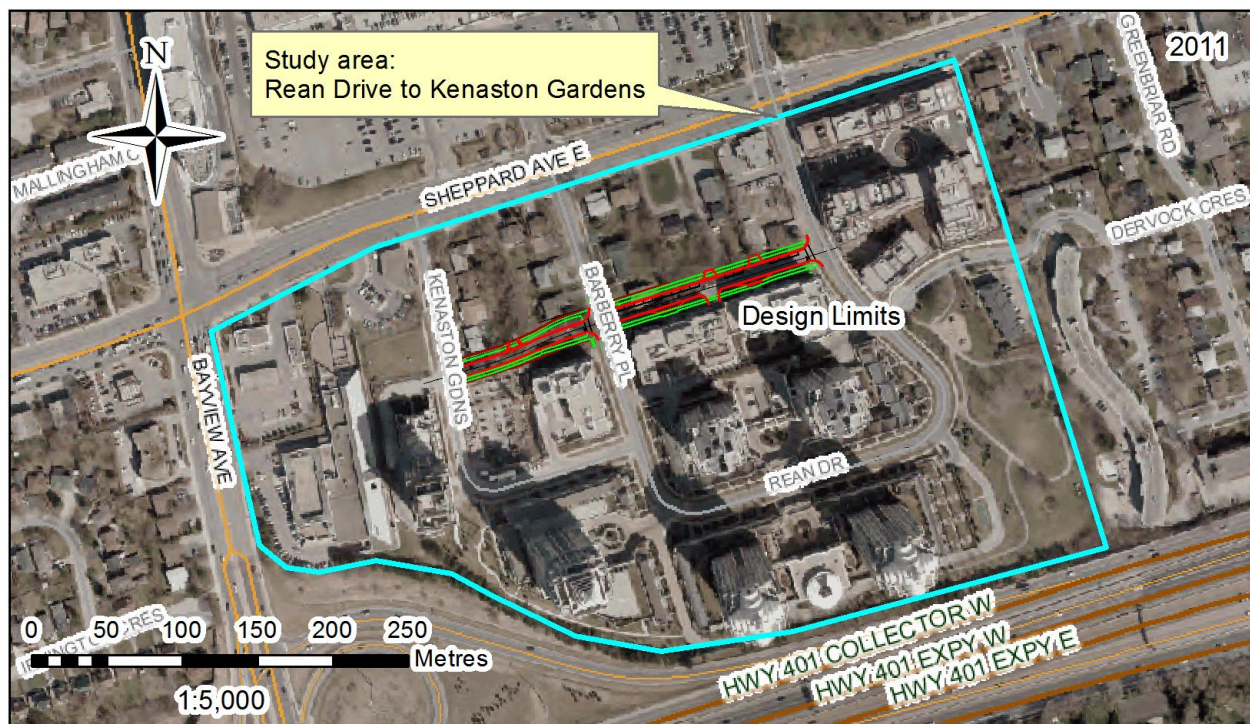
Map 23: 2002 aerial view of the study area showing southward extension of Kenaston Gardens into southwest corner (City of Toronto 2014).



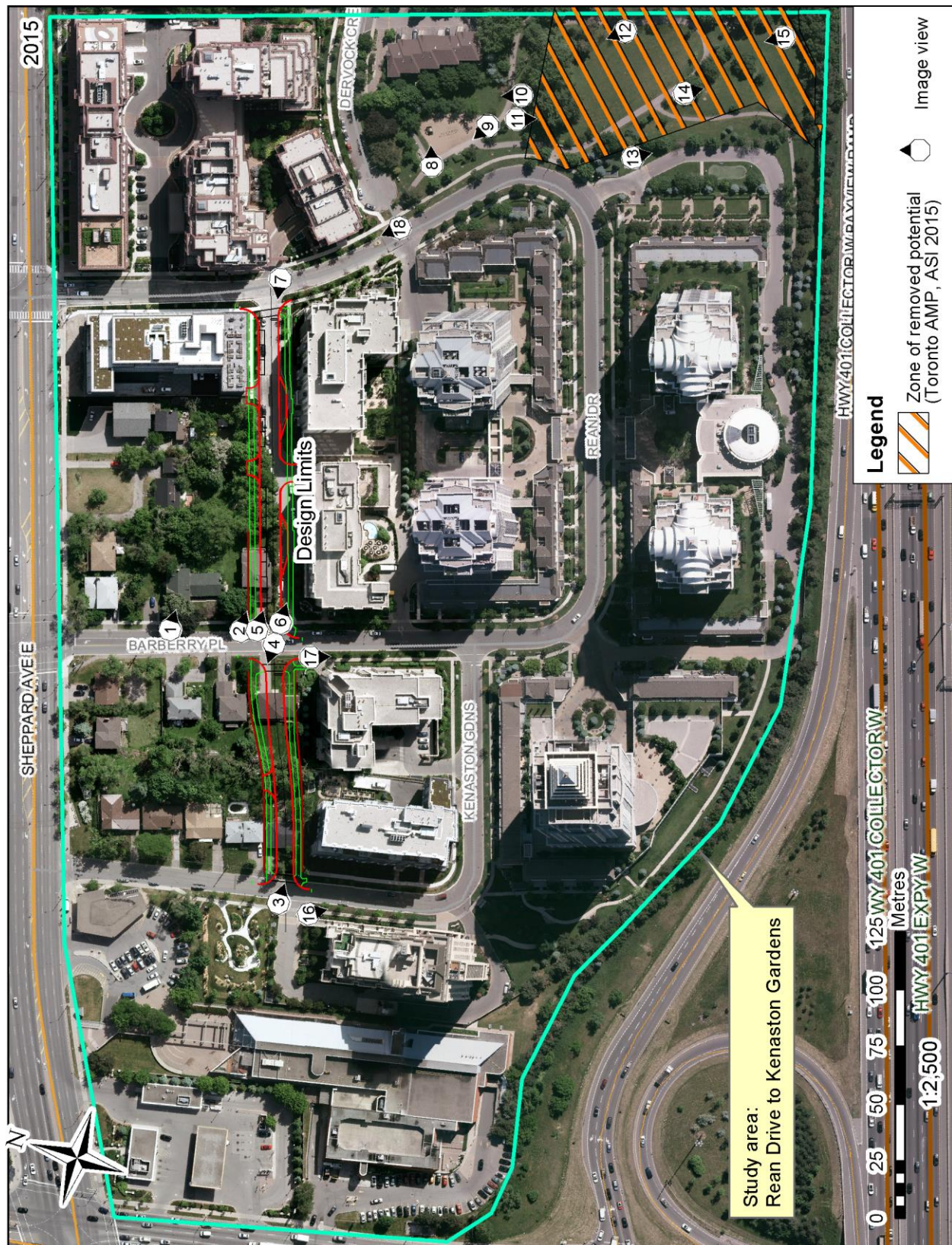
Map 24: 2005 aerial view of the study area showing redesigned Rean Drive, Barberrry Place and Kenaston Gardens along with hi-rise multi-unit residential development (City of Toronto 2014).



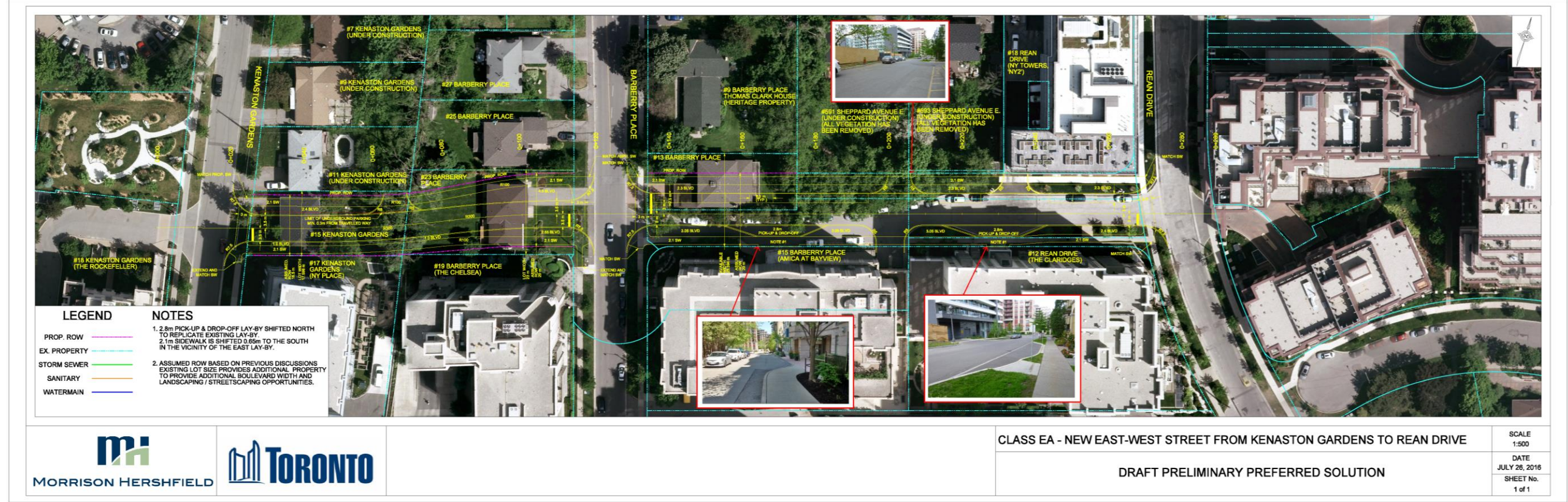
Map 25: 2009 aerial view of the study area showing new development in the northeast corner (City of Toronto 2014).



Map 26: 2011 aerial view of the study area showing new development in the northeast corner (City of Toronto 2014).



Map 27: Zone of removed archaeological potential within study area due to disturbance with Toronto Archaeological Master Plan overlay and photo locations (ASI 2015).



Map 28: Draft preliminary design plan for the Class EA – New East-West Street from Kenaston Gardens to Rean Drive (at 20% scale provided by client).