



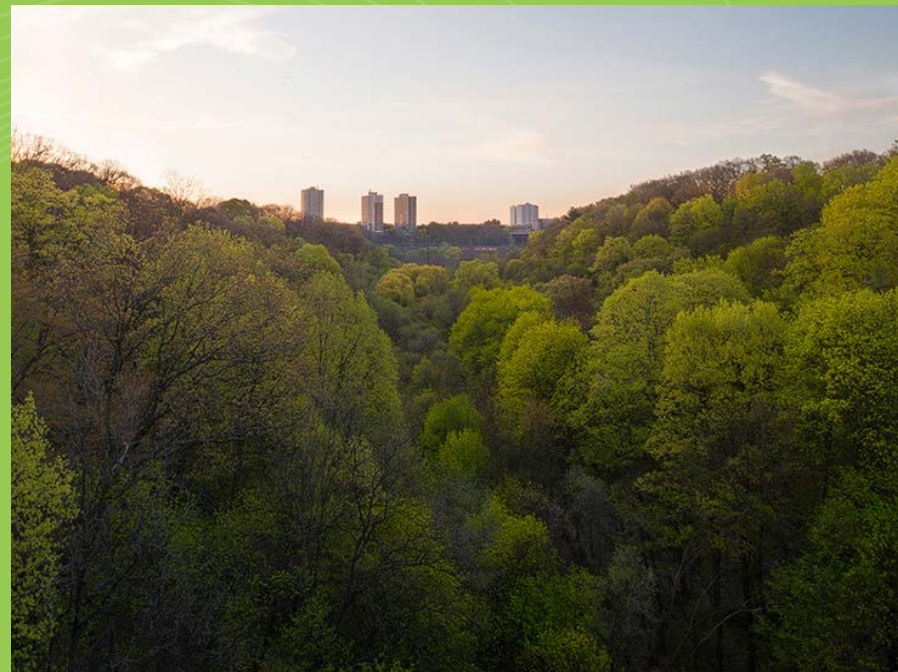
WELCOME

Ravine Strategy Open House

Photograph: Robert Burley

Agenda

- 6:30 Open House**
- 7:00 Welcome
& Introductions**
- 7:10 Overview Presentation**
- 7:25 Facilitated Discussion**
- 8:20 Wrap Up & Next Steps**
- 8:30 Adjourn**



Ravines



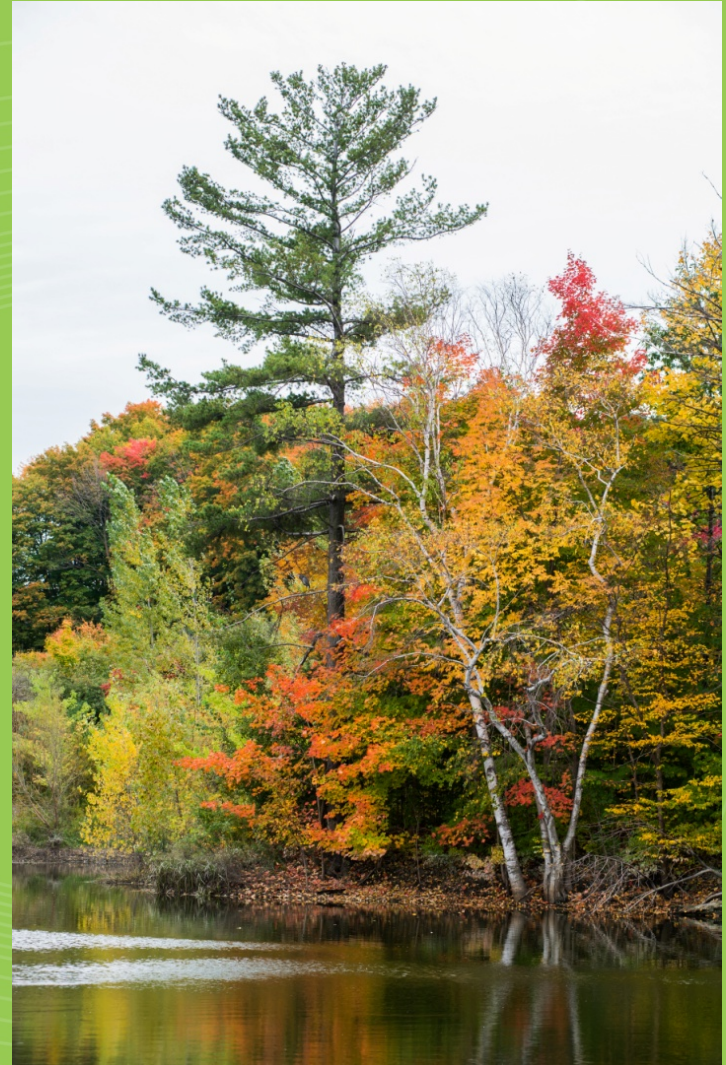
Ravines

17% of Toronto's total area is ravine
(11,000 ha of Toronto's total area of
63,200 ha)

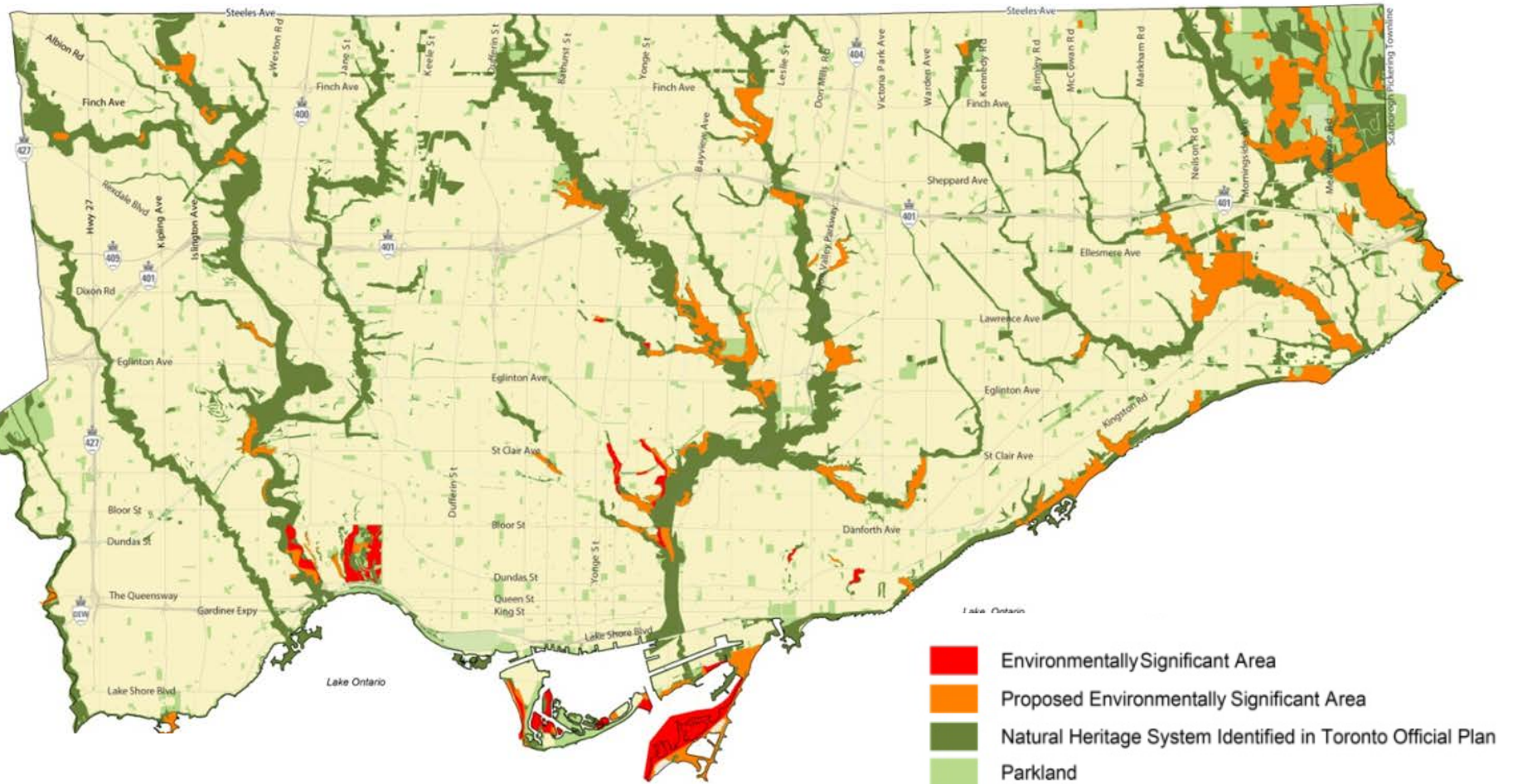
Ravine land ownership is 60% public
and 40% private with 30,000 private
addresses

Ravines cut through residential,
commercial and industrial neighbourhoods

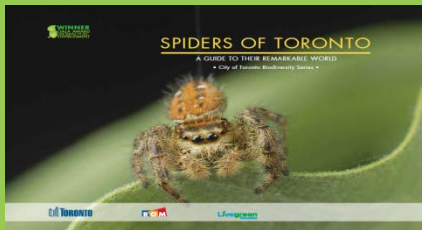
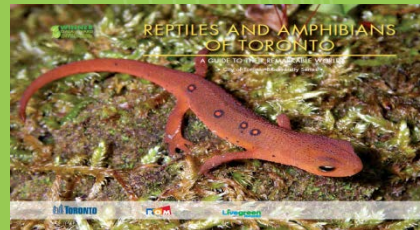
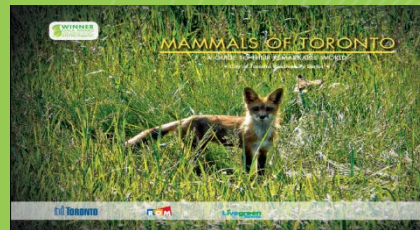
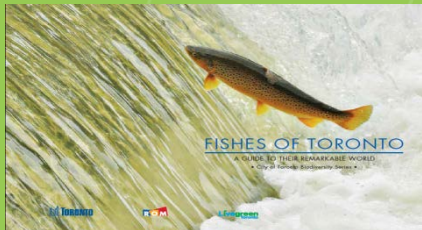
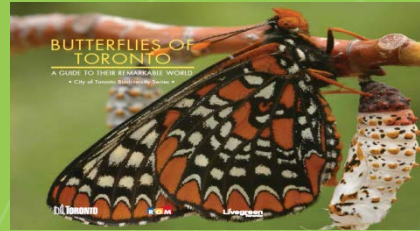
They include watercourses, parks & trails,
roads, railways, golf courses,
institutions (hospitals, schools),
cemeteries, hydro corridors,
former landfills and much more



Environmentally Significant Areas



Biodiversity



Ravines are home to most of Toronto's biodiversity.

Did you know in the Toronto area there are:

404 species of birds

110 species of butterflies

92 species of fish

38 species of mammals

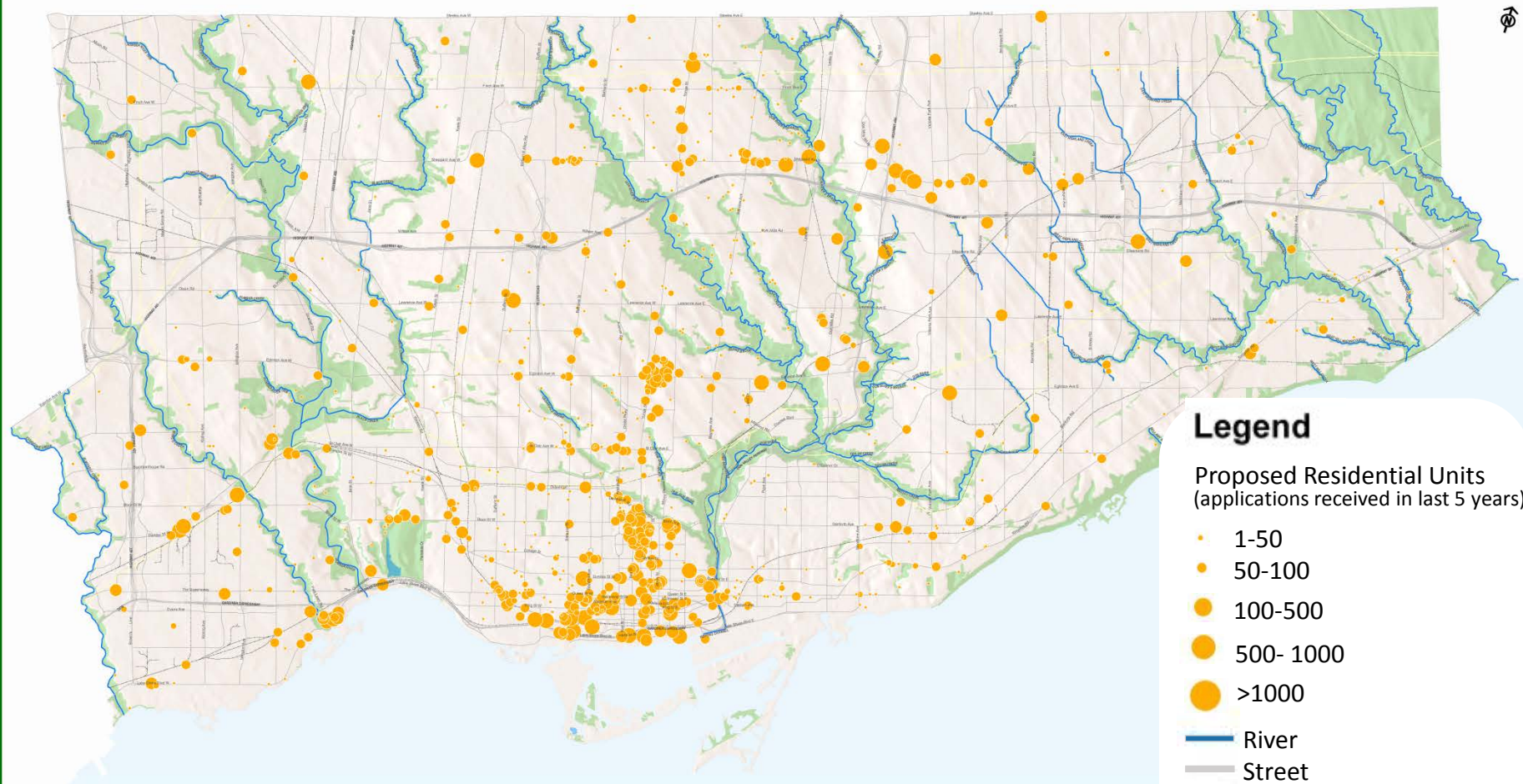
364 species of bees

200 species of spiders; and

24 species of reptiles and amphibians



Intensification



This map is for planning purposes only.
Prepared by Graphics & Visualization Section, City Planning.

Ravine Strategy – Place Making

Interface

- Access • Wayfinding • Integration into City Structure • Park Users • Nature

Experience & Quality

- Stewardship • Design Quality • Art
- Beauty • Education • Interpretation • Culture

Parks & Green Spaces

- Spaces + Facilities for Human Use and Enjoyment
- Managed by PFR

Infrastructure

- Rail + Hydro • Trails • Bridges • Roads
- Water, Sewer, Oil + Gas Pipelines

Foundation

- Natural Environment Terrestrial + Aquatic Habitat
- Stable • Resilient • Ecologically Diverse

Ravine Stakeholders

- Public
- Organizations
 - Community, NGO's, Recreation, Nature, Culture, Educational
- Institutions
 - Schools, Colleges, Universities, Hospitals
- Landowners
 - Private, Residential, Commercial, Industrial
- Utilities
- Government

Ravine Strategy



The strategy will:
guide the future use, management,
enhancement and protection of
Toronto's ravines
include a common vision and set of
principles to guide Toronto's
policies, investments and
stewardship for ravines

Discussion



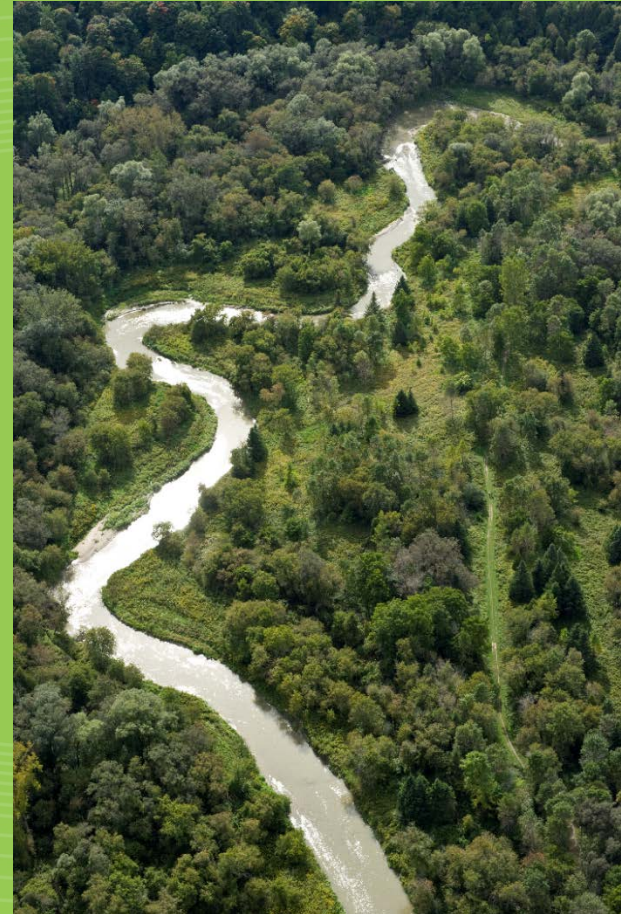
Discussion Questions

A: What are the key issues in realizing your vision for ravines in Toronto?

B: What are the key opportunities in realizing your vision for ravines in Toronto?

C: What should the guiding principles be for the Ravine Strategy?

D: What should the priorities be for the Ravine Strategy?



Next Steps

- A. The online survey will remain open until July 24 at <http://bit.ly/1HKumNO>.
- B. Information and updates, including a high-level summary of the feedback received from this consultation and the survey, will be posted on the Ravine Strategy Web Page at <http://bit.ly/RavineStrategy> on an ongoing basis.
- C. A Ravine Strategy Advisory Group made up of internal and external stakeholders will be developed with representation from the following sectors:
 - Natural heritage / environment
 - Culture
 - Parks
 - Recreation
 - Landscape architecture
 - Research
 - Private landowners
- D. A presentation is scheduled to be provided to the Parks and Environment Committee on November 23, 2015.
- E. A report to City Council with the strategy is targeted for early 2016.

Thank you!

