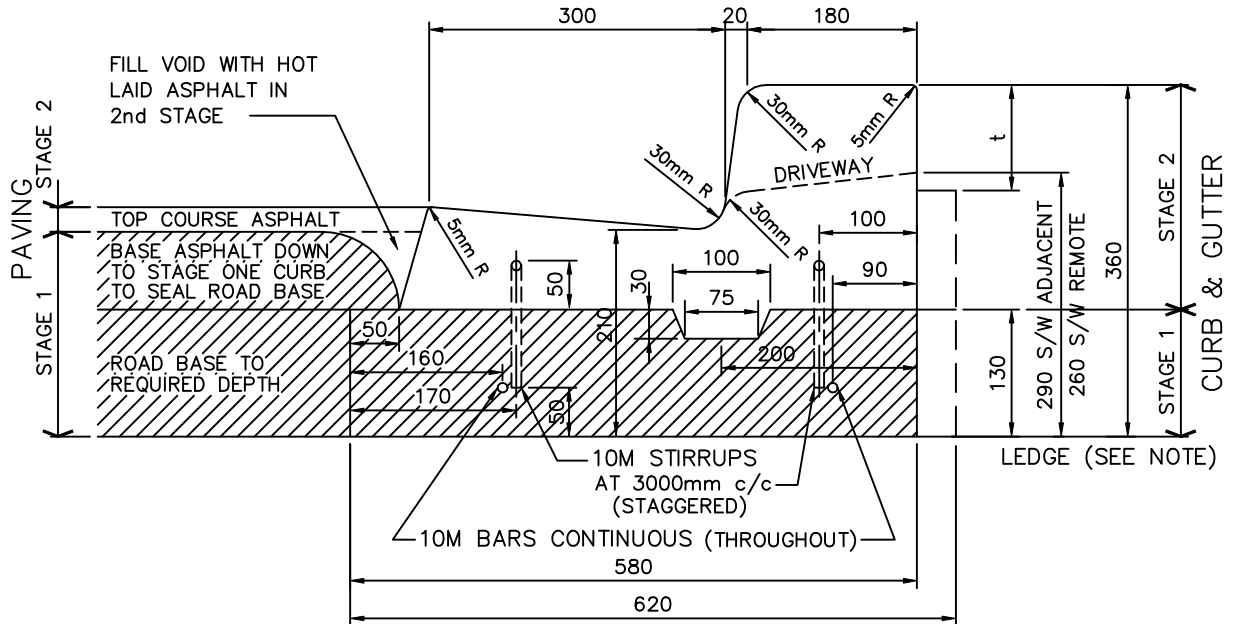
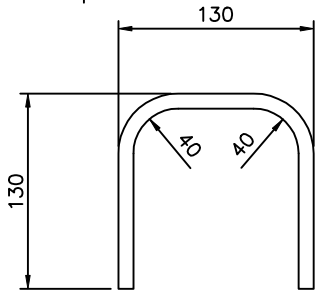


STAGE TWO
 REMOVE ASPHALT FILLER AND PLACE SECOND STAGE OF CURB AND GUTTER.

PLAN



SECTION A



STIRRUPS DETAIL
 10M DEFORMED BAR

NOTES:

1. t = THICKNESS OF ADJACENT SIDEWALK OR PAVER STRIP
2. CURB CUT END SLOPES 4:1.
3. CATCH BASIN GRATE TO BE SET AT FINISHED GRADE IN FIRST STAGE.
4. STAGE ONE TO BE THOROUGHLY CLEANED BY USE OF COMPRESSED AIR AND WATER, OR OTHER APPROVED METHOD TO THE SATISFACTION OF THE COMMISSIONER, PRIOR TO STAGE TWO INSTALLATION (CURB & GUTTER).
5. USE OF CURING COMPOUNDS OR BONDING AGENTS ARE NOT PERMITTED BETWEEN STAGES.
6. AFTER INSTALLATION OF STAGE TWO, CURING COMPOUND IS TO BE APPLIED.
7. LEDGE - TO BE USED AT CURB RADIUS ONLY.

METRIC
 ALL DIMENSIONS SHOWN HERE ARE IN MILLIMETRES UNLESS OTHERWISE NOTED

APPROVED BY *[Signature]*
 TOM DENES, P. ENG.
 EXECUTIVE DIRECTOR TECHNICAL SERVICES

SCALE N.T.S.



TWO - STAGE
 CURB AND GUTTER

DATE: JUNE, 2001
 REVISED:
 STANDARD No.
 T-600.07-1